

# *A Parents Guide to* *SCHOOL SAFETY:* **A.L.I.C.E.**

*Common Sense, Not Common Knowledge*



Sgt. Justin Music

City of Sylvania  
Police Division



# A.L.B.C.E.

- In Sylvania Schools, safety is a priority
- Increase the safety of our children
- Case studies help us prepare for critical events such as active shooter events
- If we know what we are going to do when we are faced with a threat, we dramatically reduce our decision making time and take action
- Moments can make a difference



# Response Options

We cannot make a violent encounter perfect, but we can make it better than it could have been



# A.L.□.C.E.

- **Alert!**, Get the word out!
- **Lockdown**, Good starting point, allows aggressive use of current technology and procedures to:
- **□nform**, communication keeps the shooter off balance, and knowledge empowers occupants to increase survivability.
- **Counter**, apply skills to distract, confuse, and gain control
- **Evacuate**, to reduce the number of potential targets for the shooter, and reduce the chances of victims resulting from friendly fire when help arrives



# Response Options

- How school safety has evolved:  
**Traditional Police Response:**
  - Contain and wait
  - SWAT/SRT  
(Hostage/Barricade)



# Response Options

- Columbine – April 20th, 1999
  - 14 students and 1 teacher killed
  - 23 others wounded
  - Two (2) students went on hour long rampage planning to kill 500 students and blow up the school
  - Police provided a “traditional” response



# Response Options

- Post Columbine Response

## **Police Response**

- Active Shooter/Quad Training
- Push to contact
- Neutralize the threat

## **School Response**

- Lockdown Procedures



# Response Options

## ■ Current Best Practices

### **Police Response**

- Solo Engagement Training
- Push to contact
- Neutralize the threat

### **School Response**

- ALICE Training to empower or staff and students





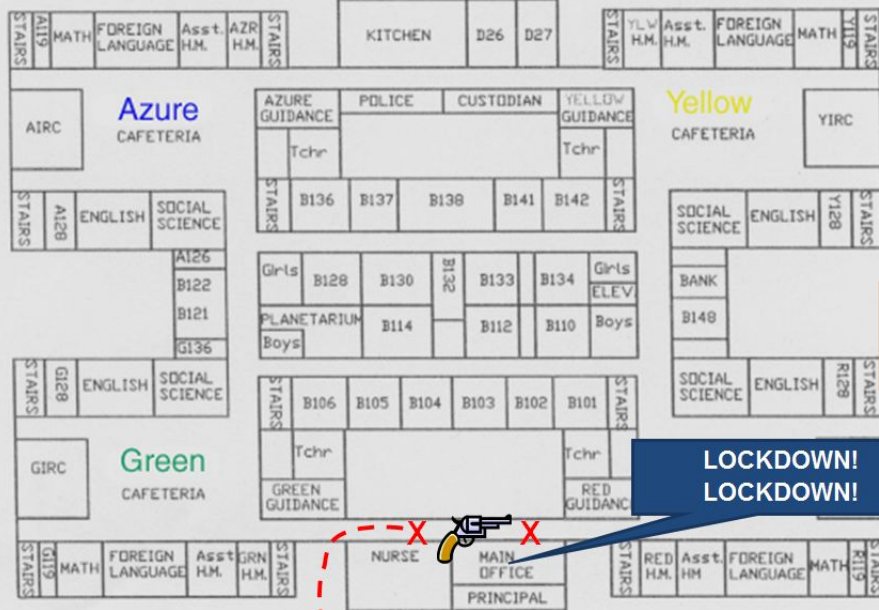
# SYLVANIA SOUTHVIEW HIGH SCHOOL

Southview High School

Cougar Ln



## Any School, USA

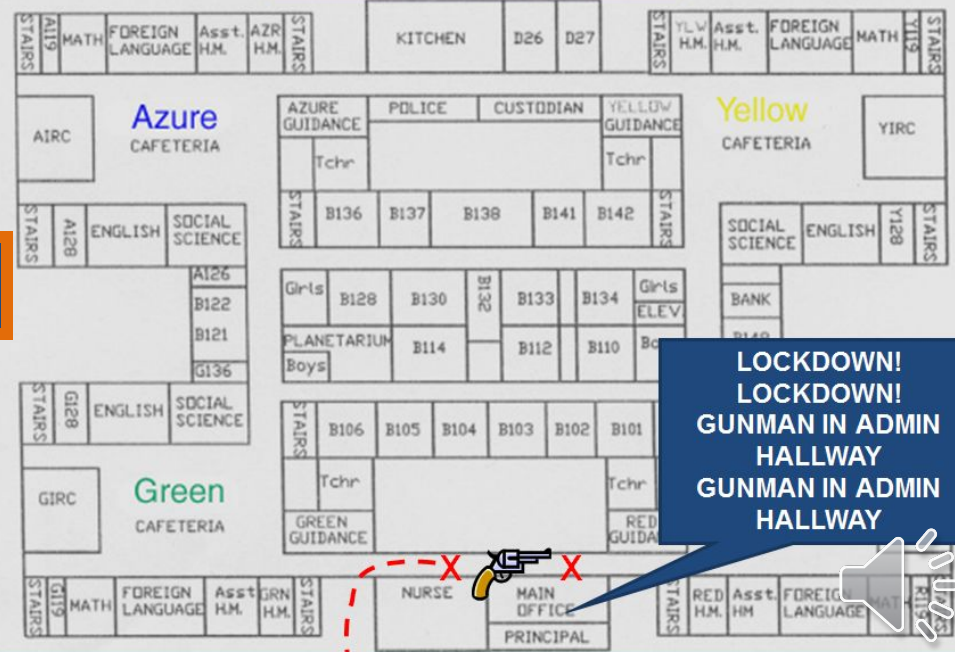


**CHANGE THIS**

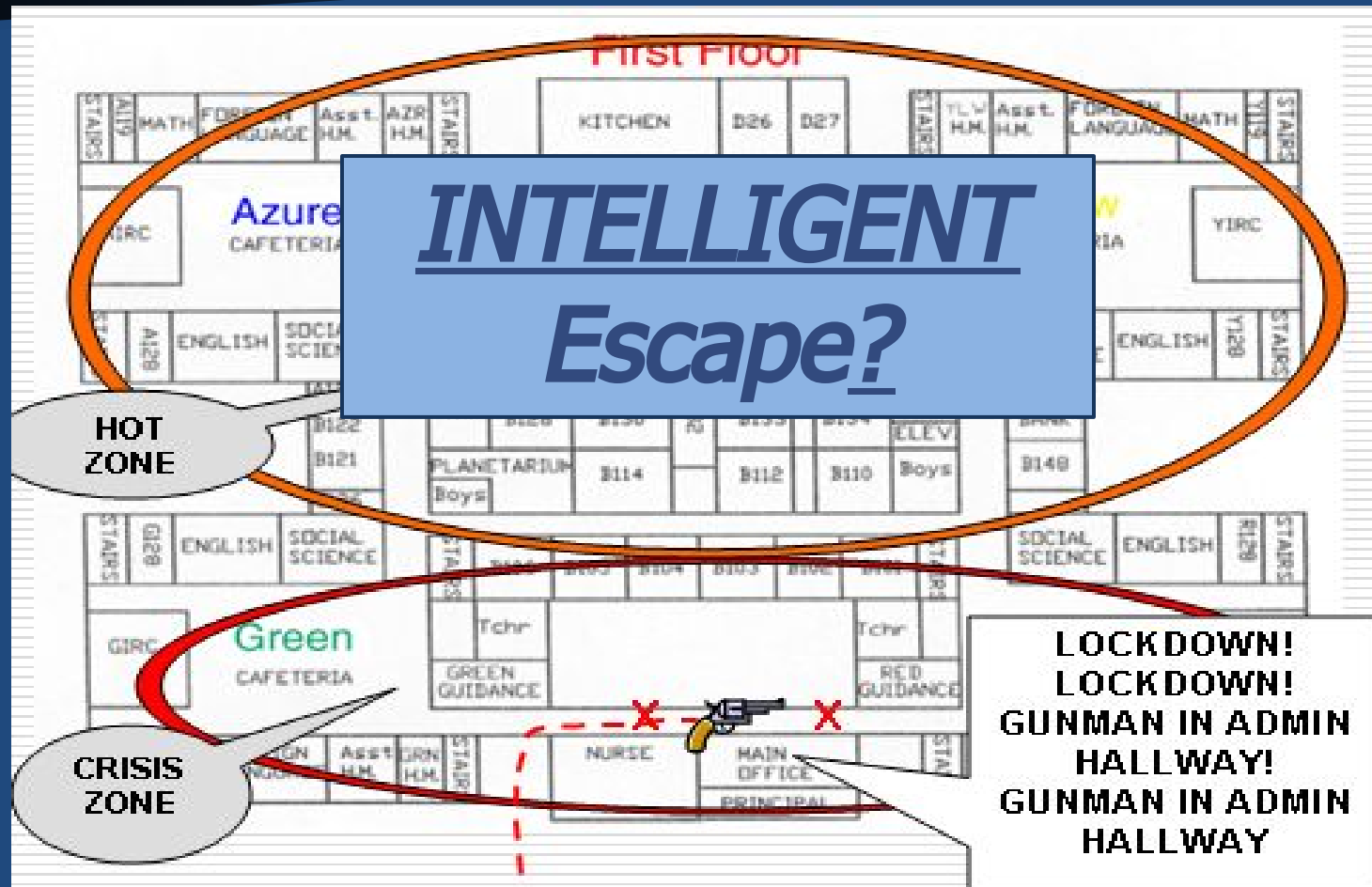
**LOCKDOWN!  
LOCKDOWN!**

**TO THIS**

## Any School, USA



# Creates Zones of Varying Degrees of Danger



# CASE STUDY

## Columbine H.S. Library

- Wounded Teacher tells students to hide
- Bad guys enter library at 1129 hrs, 56 people inside
- They stay in the library for 7½ minutes
- Both gunmen stop during the shooting to reload and to shoot at police outside
- In all they shoot 22 students in the library, 10 are killed
- **All the fatalities are static**, all but one are hiding under tables



# *KEY LESSONS*

- What other options were available in the Columbine Library Incident?





DIAGRAM 40



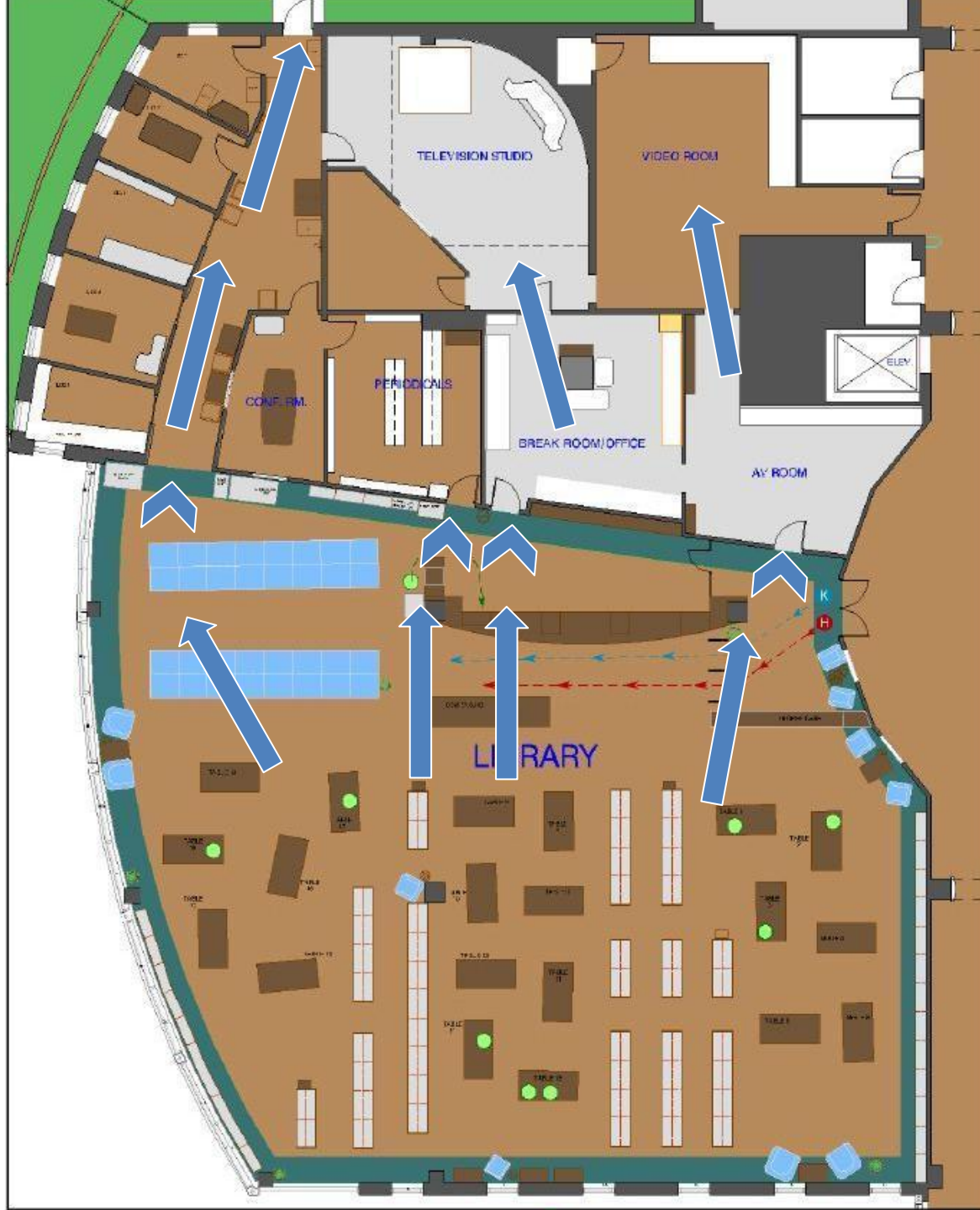












# Why Evacuate?

- Why is it okay to leave after the crisis, but not before the threat arrives?
- We want to empower our staff and students to make choices to increase their safety.

# Response Options

- “Intelligent” Escape may be our best choice?
- If Escape is not an option...
  - *Enhanced Lockdown* may be our best option?



# Lockdown Basics

- Trust your instincts
- You may hear an announcement
- You may hear gunfire/explosion
- You may see someone walking into the building or through the building
- A witness/student may alert you
- Do not wait for confirmation to take action

# Enhanced Lockdown

- Layers of Security
  - The first layer is locking the door
  - Secondary Door Restraint Device
  - The goal is to make ourselves a hard target



# Secondary Door Restraint Device





# Secondary Door Restraint Device





# Secondary Door Restraint Device





# Enhanced Lockdown

- Staff and Students will Stand inside room.
- Lock the door – 1<sup>st</sup> layer of security
- Barricade/Fortify Your Door:
  - SDRS/Rope/Cords - Door opens out
  - SDRS/Door Wedges - Door opens in
  - Desks
  - Chairs
  - Anyway you can make the door more difficult to breach







# *KEY LESSONS*

- *MUST BE CAREFUL NOT TO CREATE A "CHECK IN THE BOX" RESPONSE!*
- *We have options – No one right answer!*



# Response Options

- Having a plan will dramatically enhance our safety
- If we know what we are going to do when faced with a threat, we shorten our response time



# Response Options

## Remember:

- *Intelligent Escape* can be our best option, if possible?
- Enhanced Lockdown
  - Barricade/Fortify
- Counter – SWARM (Grades 7-12)







# Guide for Preventing and Responding to School Violence

2<sup>nd</sup> Edition





# SECTION 5

## DURING A MAJOR CRISIS

Sections 5 and 6 provide suggestions for responses during and after school crises in which one or more individuals have been victimized by violence.

### The Role of School Administrators, Teachers, and Staff

#### Immediate Response

1. At the onset of a situation, the following things need to happen as close together as possible. Responding personnel will have to use individual judgment as to what they can and should do first, keeping in mind that their primary role is taking care of children at risk.
2. **Get students out of harm's way.** When possible, get in touch with the appropriate school authority or person on the crisis management team to determine whether evacuation or lockdown is the appropriate response. Teachers should make decisions about lockdown or evacuation on their own only in life-threatening situations, as specified in the school crisis management plan.
3. **Use doors that lock from the inside only in cases where lockdown is the safest option.** In an active shooter situation, only evacuate if the location of the shooter is known and an exit is easily accessible to students, such as a window that can be opened or broken.

#### Active Resistance

Active resistance is fighting back with any objects of opportunity, such as chairs, desk, and books. **Active resistance is a last resort and should only be used if potential victims are trapped in a room with an active shooter, there are already victims, and all other personal survival recommendations are no longer an option.** There have been cases where active resistance has been successfully used, such as a shooting in Springfield, Oregon.

#### Implementing the Crisis Management Plan

Depending on the nature of the emergency, either law enforcement or the fire department will be in charge of the incident.

1. Secure all areas for student and staff safety until the police arrive.
2. Be aware that the site may be a potential crime scene. Avoid unnecessarily tampering with or disturbing evidence. To the extent possible, leave all objects exactly as they are to protect evidence for law enforcement investigations. Discourage others from disturbing potential evidence.
3. Tell emergency responders where the school staff command post is located.
4. Direct arriving families to the designated place where they can receive information.
5. Do not dismiss students to unknown care.
6. In the case of a lockdown, have a sign-out sheet to





# ACTIVE SHOOTER HOW TO RESPOND





# HOW TO RESPOND WHEN AN ACTIVE SHOOTER IS IN YOUR VICINITY

Quickly determine the most reasonable way to protect your own life. Remember that customers and clients are likely to follow the lead of employees and managers during an active shooter situation.

## 1. Evacuate

If there is an accessible escape path, attempt to evacuate the premises. Be sure to:

- Have an escape route and plan in mind
- Evacuate regardless of whether others agree to follow
- Leave your belongings behind
- Help others escape, if possible
- Prevent individuals from entering an area where the active shooter may be
- Keep your hands visible
- Follow the instructions of any police officers
- Do not attempt to move wounded people
- Call 911 when you are safe



## 2. Hide out

If evacuation is not possible, find a place to hide where the active shooter is less likely to find you.

Your hiding place should:

- Be out of the active shooter's view
- Provide protection if shots are fired in your direction (i.e., an office with a closed and locked door)
- Not trap you or restrict your options for movement

To prevent an active shooter from entering your hiding place:

- Lock the door
- Blockade the door with heavy furniture



### 3. Take action against the active shooter

As a last resort, and only when your life is in imminent danger, attempt to disrupt and/or incapacitate the active shooter by:

- Acting as aggressively as possible against him/her
- Throwing items and improvising weapons
- Yelling
- Committing to your actions



# Overall Goal

- **To provide a range of options and communications in order for occupants to make the best decision for their safety**



# Questions

**Sgt. Justin Music**  
**City of Sylvania Police Division**  
**(567)455-0794**  
**851@sylvaniapolice.com**

