



Clay High School Dress Guidelines

*for Homecoming, Winter Formal,
and Prom*

(All other dances will follow
CHS dress code as specified
in the agenda book)



Clay High School Dress Guidelines

Why do we have a dress code?

CHS staff and administration
want you to make good choices.

We are not trying to inhibit your style.

Prom should be fun, but we want everyone
to be comfortable and safe.



Clay High School Dress Guidelines

With modesty in mind, the
following dress code
guidelines
will be enforced at all
Clay High School dances.



Clay High School Dress Guidelines

#1

Dresses may not be cut below the bust line.

The bust continues around your sides directly under the armpit. **With arms down at your side, if flesh touches flesh below the bust line, the dress is inappropriate.**

This dress meets
dress code.

Bust Line



Bust Line
(on the side)



Clay High School Dress Guidelines

Unacceptable Dresses





Clay High School Dress Guidelines

#2

Dresses may be backless as long as they are not cut below the naval.



These dresses meet the dress code.

Please note how the bust is covered on the sides.



Clay High School Dress Guidelines

Unacceptable Dresses





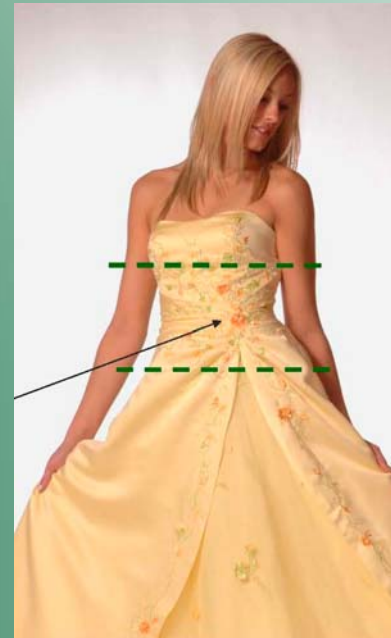
Clay High School Dress Guidelines

#3

Midriffs will not be exposed.

This includes both front and side.
With arms down at your side, if flesh touches flesh in the midriff section, the dress is inappropriate.

Midriff Section



This dress meets dress code.



Clay High School Dress Guidelines

Unacceptable Dresses





Clay High School Dress Guidelines

#4

Dresses may not be shorter than, nor have a slit that exceeds mid thigh as determined by the standard fingertip rule.

This dress meets dress code.





Clay High School Dress Guidelines

Unacceptable Dresses





Clay High School Prom Dress Guidelines

Unacceptable Dresses





Clay High School Prom Dress Guidelines

Unacceptable Dresses





Clay High School Prom Dress Guidelines

Unacceptable Dresses





Clay High School Dress Guidelines

Pinning and Fabric Inserts

- No pinning will be allowed as an alteration for a dress if without the pins the dress does not meet dress code.
- Fabric inserts must be sewn not pinned on the dress if without the inserts the dress does not meet dress code.
- No cover-ups (coats, shawls, sweaters) will be allowed over dresses that do not meet dress code.



Clay High School Dress Guidelines

Prom Pictures

Dress for pictures taken at the dance must also meet dress code. You may not wear an inappropriate dress to take pictures and then change into one that does meet code for the dance.



Clay High School Dress Guidelines

While we will be reasonable in our interpretation of these guidelines, we want you to know that you will not be allowed into the dance if you are dressed inappropriately.

Most importantly, this dress code does not limit your ability to show your style and uniqueness...



Clay High School Dress Guidelines

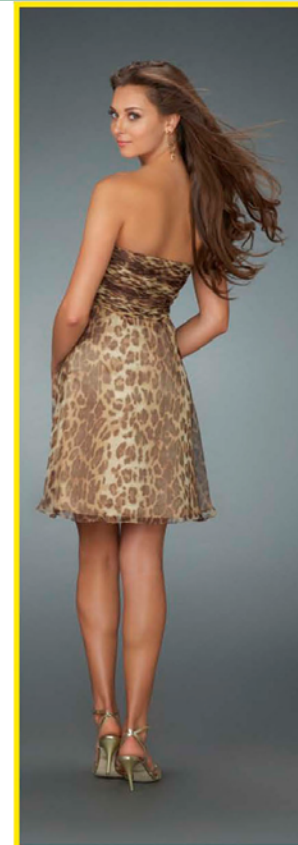
There are many beautiful and stylish dresses that DO meet the dress code.





Clay High School Dress Guidelines

There are many beautiful and stylish dresses that DO meet the dress code.





Clay High School Dress Guidelines

There are many beautiful and stylish dresses that DO meet the dress code.





Clay High School Dress Guidelines

Clay High School Prom

- Make good decisions.
- Be safe.
- Have fun

Questions about a specific dress?

Please see one of the following people:

- Ms. Kollarik (room 202)
- Mr. Wamer, Dean of Students
- Mr. Jurski, Principal
- Mr. Quigg, Assistant Principal