



# THE COLLABORATIVE

Rossford Middle School

Design Meeting

02-25-2025

Architecture, Planning & Design

# PROJECT VISION

Agenda

- 1 Site Planning
- 2 Building Planning
- 3 Schedule
- 4 Next Steps

Agenda

- 1 Site Planning
- 2 Building Planning
- 3 Budget/Schedule
- 4 Next Steps



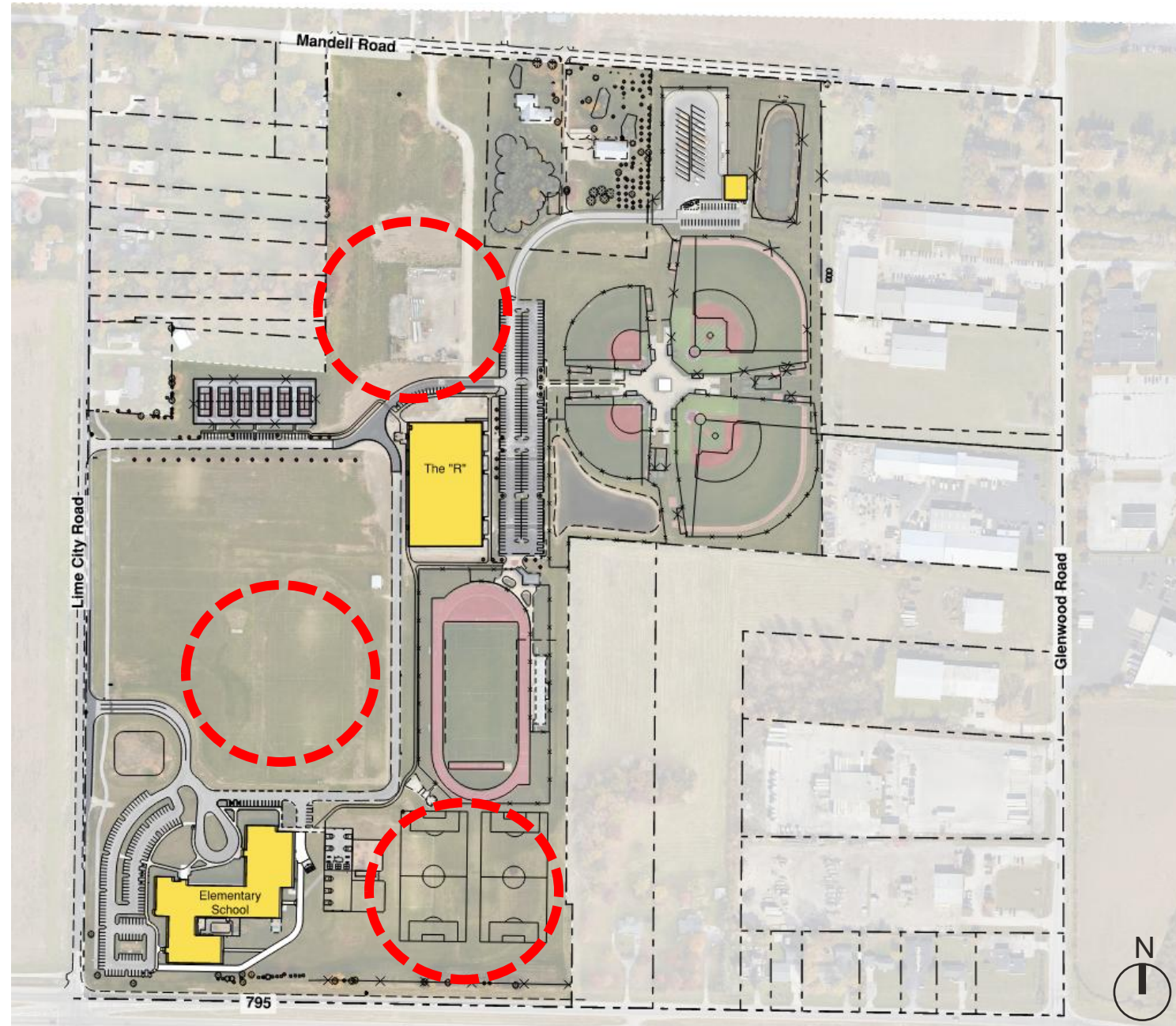
# THE COLLABORATIVE

## Opportunities

- Connection to the "R"
- Connection to the Elementary
  - Shared Playground
  - Dining Area Connection
- Creating a "Campus"
  - Discussion: Education | Athletics
- Street Presence / Clear Entrance

## Challenges

- Storm Water
- Site Circulation & Wayfinding
  - (Bus & Car Zones)
  - Updated Traffic Study
- Dedicated 3<sup>rd</sup> Path Out of Site
- Land Acquisitions / Timing

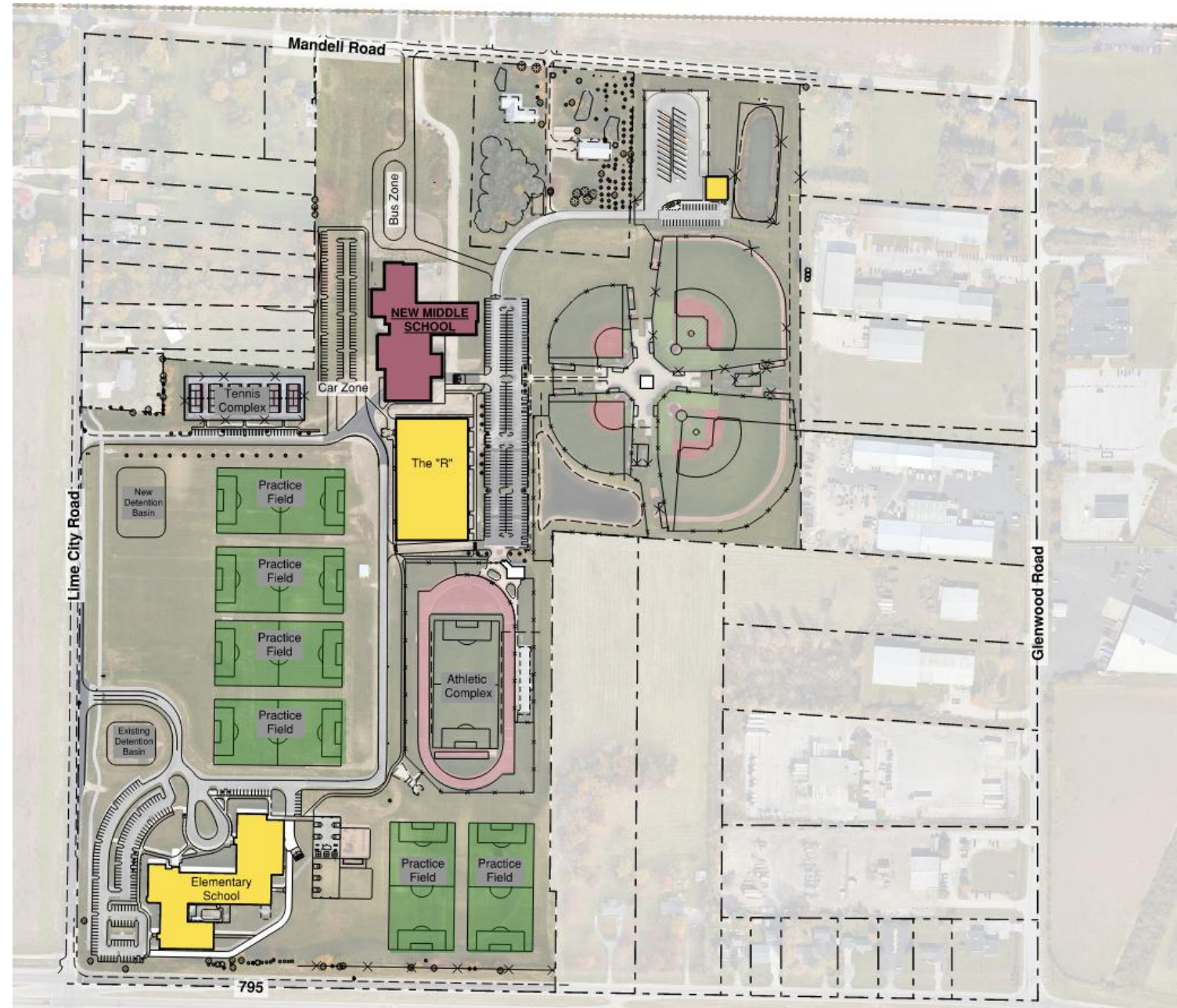




# Site Planning - North Site Location

## THE COLLABORATIVE

- New Site Entry From Mandell Road
- Bus Zone:
  - MS Access Route from Mandell Road
  - ES Access Route thru Ex. Parking Lot
- Car Zone:
  - Access MS via Bulldog Way
  - Access ES from Lime City Road
- Shortest Access between MS & The "R"
- Limited Room for building Expansion
- Limited Street Frontage / Presence on Site
- New Playground Facilities
- New Drive around 'R' for ES Bus Access
- New Vehicle Circulation to Athletics P

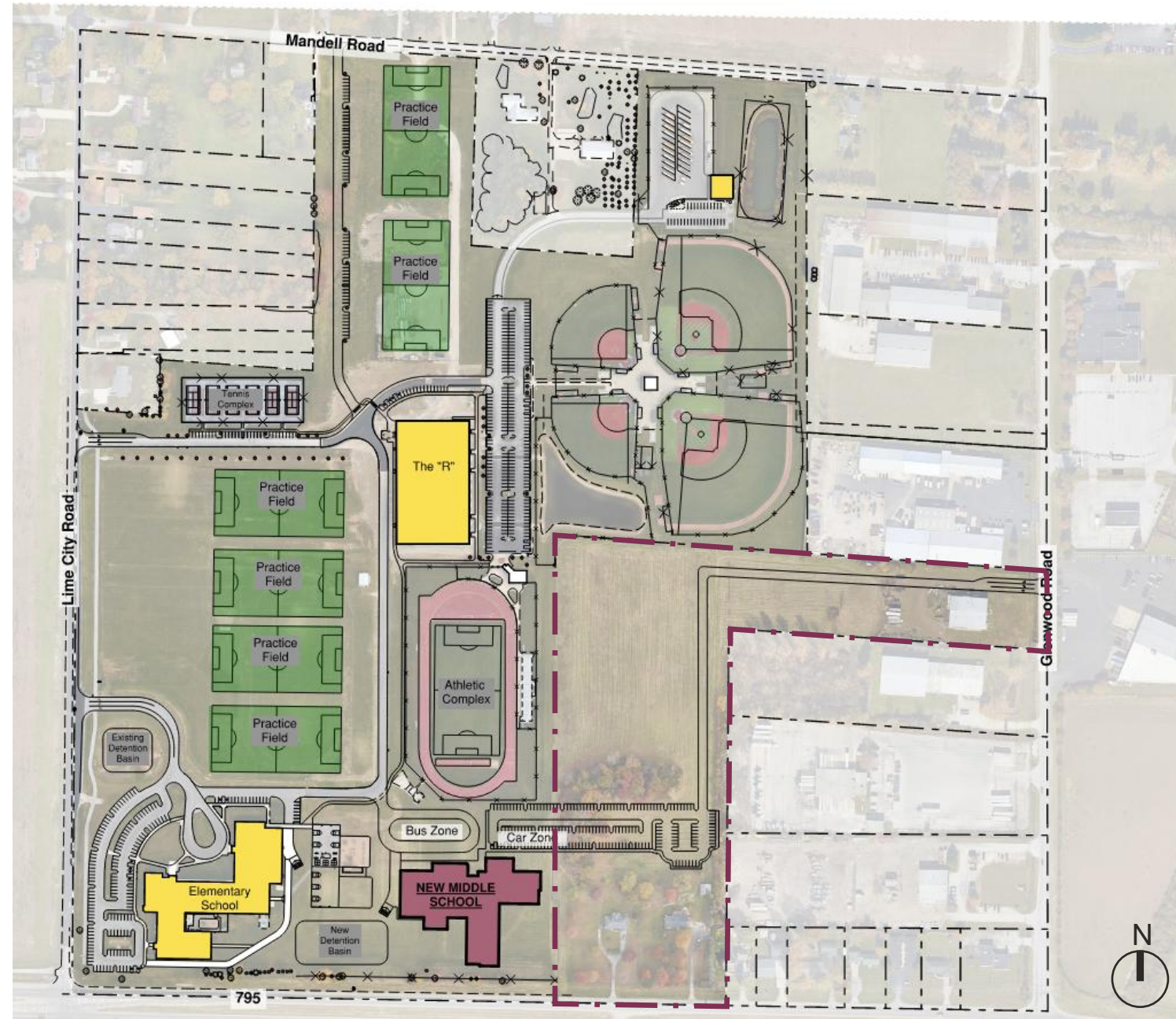




# Site Planning - Southeast Site Location

## THE COLLABORATIVE

- New Site Entry From Glenwood Road
- Bus Zone:
  - MS from Mandell Rd / On-site Bus Garage
  - ES Access Route thru Ex. Parking Lot
- Car Zone:
  - Access MS via Glenwood Road
  - Access ES from Lime City Road
- Pedestrian Access between MS & ES
- Shared Playground
- Limited Room for building Expansion
- Limited Street Frontage / Presence on Site
- Furthest Access between MS & The "R"
- Land Acquisition Required





# Site Planning - Central Site Location

## THE COLLABORATIVE

- Maintain Existing Site Access Points
  - *Optional New Site Entry From Mandell Road*
- Bus Zone:
  - MS from Mandell Rd / On-site Bus Garage
  - ES Access Route thru Ex. Parking Lot
- Car Zone:
  - Access ES from Lime City Road
  - Access MS from Bulldog Way
- Direct Pedestrian Access between ES & MS
- Shared Playground
- Most Flexibility for Building Expansion
- Presence on Site and clear entrance visibility from Street Frontage





## Agenda

- 1 Site Planning
- 2 Building Planning**
- 3 Budget/Schedule
- 4 Next Steps

# PLANNING



THE COLLABORATIVE

Previous Floor Plan - First Floor



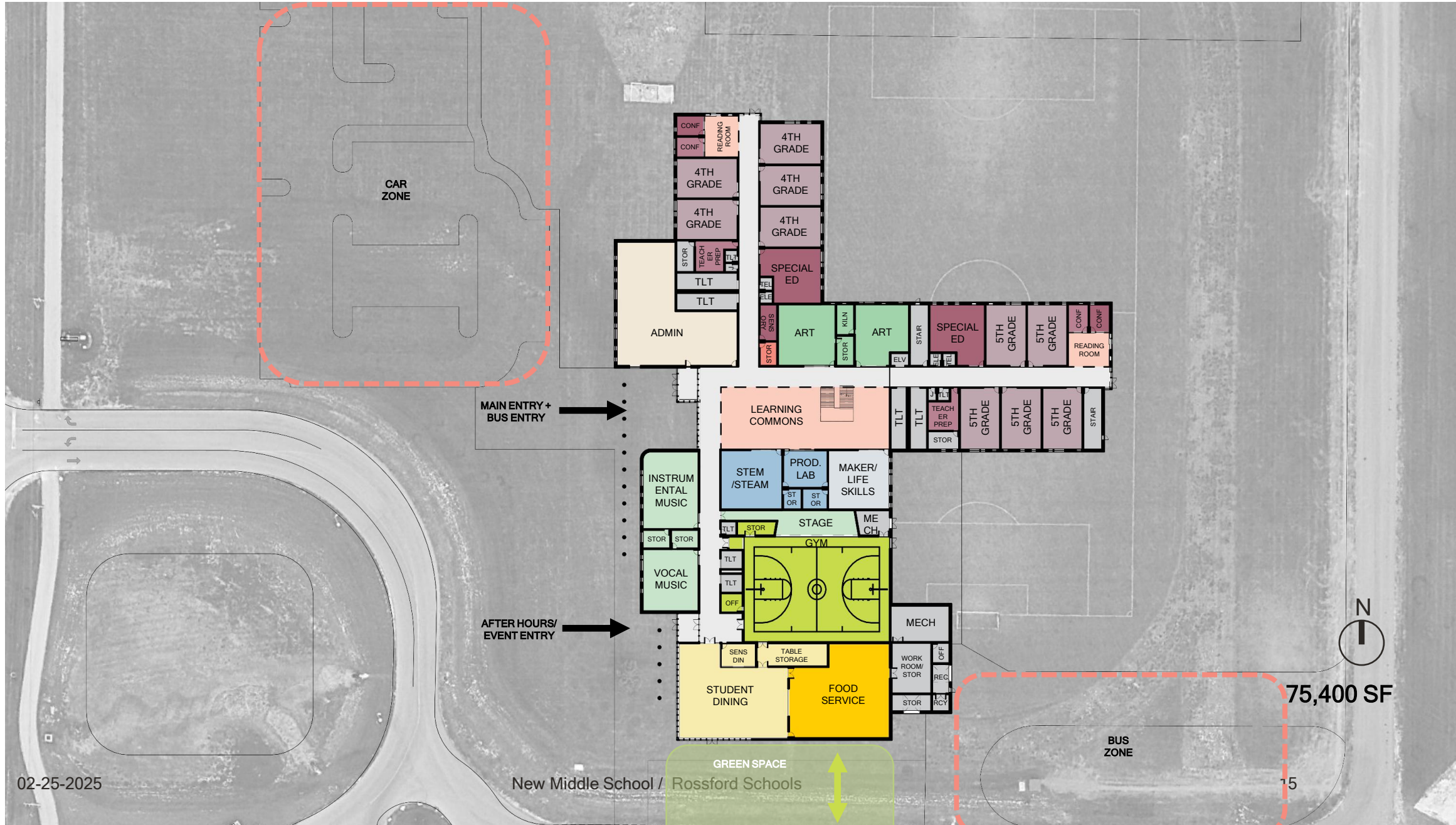
Previous Floor Plan - Second Floor





THE COLLABORATIVE

Conceptual Floor Plan - First Floor



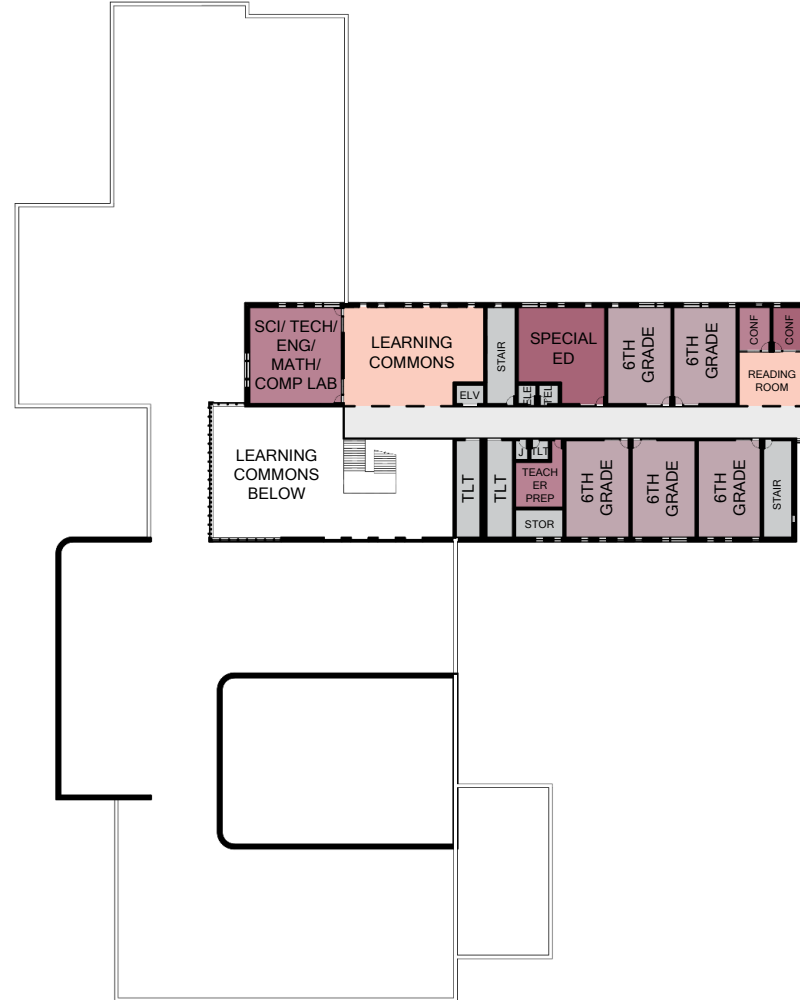
02-25-2025

New Middle School / Rossford Schools

75,400 SF

15

Conceptual Floor Plan - Second Floor





Academic Core + Special Education:

- 15 Classrooms *(900 sq ft per classroom; 5 classrooms per grade)*
  - (3 classrooms reduction)
- 3 Special Education / Resource Rooms *(1 per grade)*
- 4 Labs
  - (2 lab reduction)
- 2 Art & 2 Music Rooms *(+ kiln & storage rms)*
- 3 Teacher Prep / Work Rooms *(1 per grade)*
- 3 Small Group Rooms *(1 per grade)*
- 3 Conference Rooms *(1 per grade)*
- 3 Flex Space Reading Rooms *(1 per grade)*
- 2 Learning Commons *(1 per floor; L1 3,600 sf & L2 1,800)*

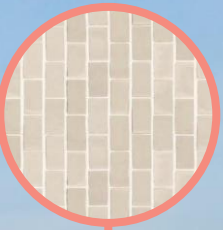
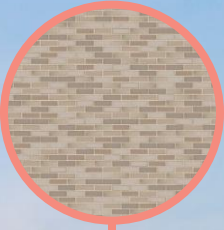
*\*Note Square Footage numbers are conceptual approximations*

Education Support Space:

- Administration Suite *(3,800 sq ft)*
- 3 Teacher Prep Rooms
- Gymnasium + Stage *(7,450 sf)*
- Dining & Food Service *(7,440 sf)*
- Storage, Restrooms, Mech, etc.

# EXTERIOR

THE COLLABORATIVE







# MODEL FLY- THROUGH

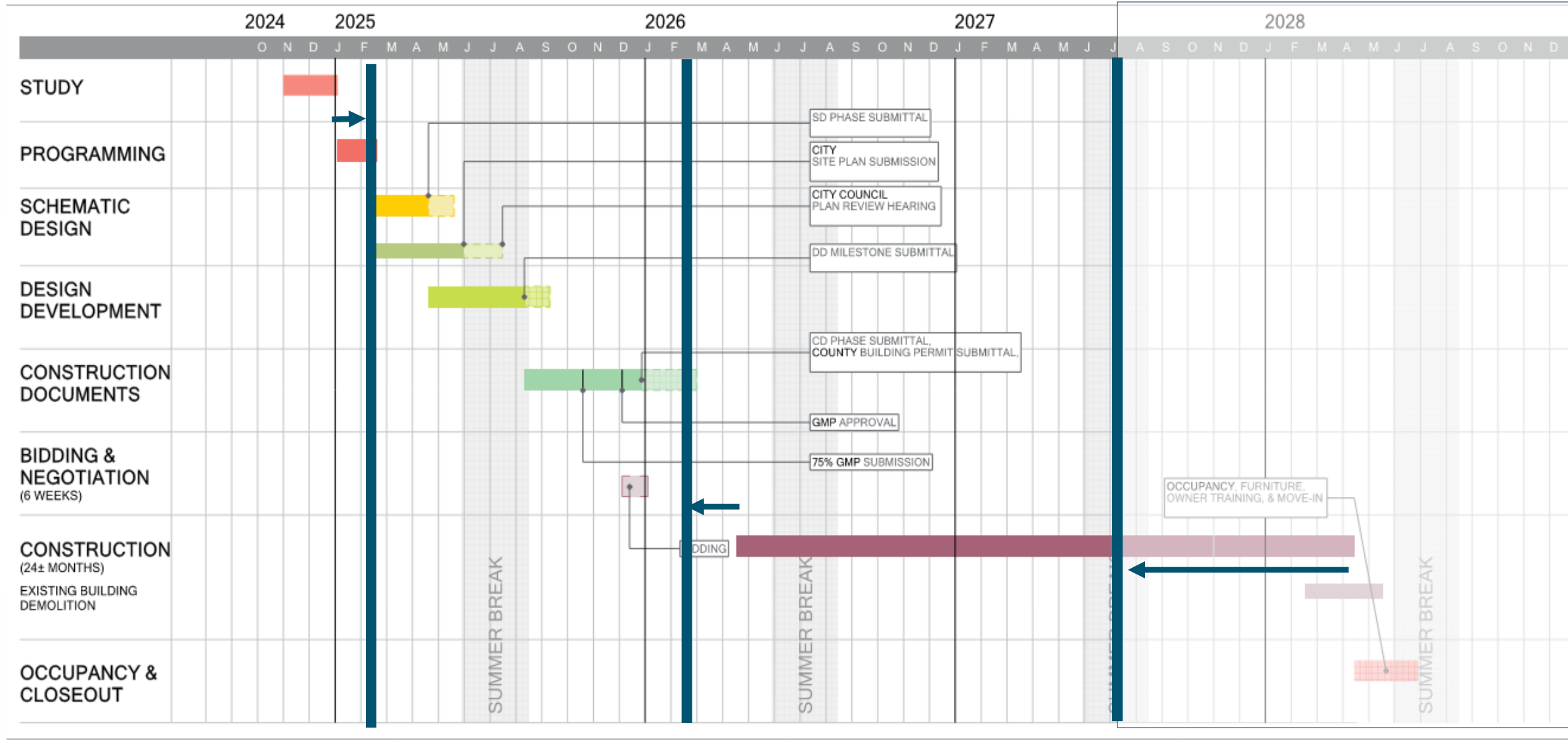
## Agenda

- 1 Site Planning
- 2 Building Planning
- 3 Budget/Schedule**
- 4 Next Steps



# THE COLLABORATIVE

## Proposed Schedule / Full Project





Agenda

- 1 Site Planning
- 2 Building Planning
- 3 Budget/Schedule
- 4 Next Steps**



# Next Steps:

## -User Group Meetings

- Teacher Group Committee
- Student Group Committee
- Building Facilities Committee
- Athletic Group Committee
- Admin / Resource Staff Committee
- Community Group Committee

## -Board Update Cadence & Expectations

## -CM RFP & Owner's Rep. Coordination

## -Upcoming Consultant Work & Release

- Traffic Study
- Site Topographical Survey
- Geotechnical Survey

## -AHJ Preliminary Meetings

- Courtesy Zoning Review
- Fire Department Review
- Wood County SWP3 Review

# Thank

# You



THE  
COLLAB  
ORATIVE

Architecture  
Planning &  
Design

TC.design