



WOOLPERT

ROSSFORD EXEMPTED VILLAGE SCHOOLS
DEMOGRAPHICS STUDIES

DECEMBER 2024

A photograph of a classroom. A female teacher in a white shirt stands at the front near a chalkboard. Several students in the foreground have their hands raised. The text 'ENROLLMENT PROJECTIONS' is overlaid in the center.

ENROLLMENT PROJECTIONS

ENROLLMENT PROJECTIONS

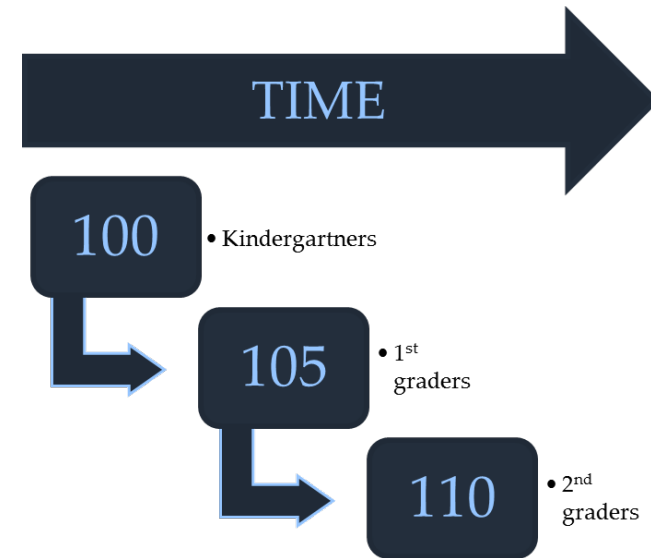
INTRODUCTION

10-year enrollment projections by grade, district-wide

- Developed using the cohort survival method
 - 10 years of historical enrollment by grade, by year
 - Historical resident live birth counts
- Housing
 - Building permits & housing development information
- Census datasets

Projections EXCLUDE students who open-enroll into REVSD

We also completed projections that INCLUDE students who open-enroll into REVSD

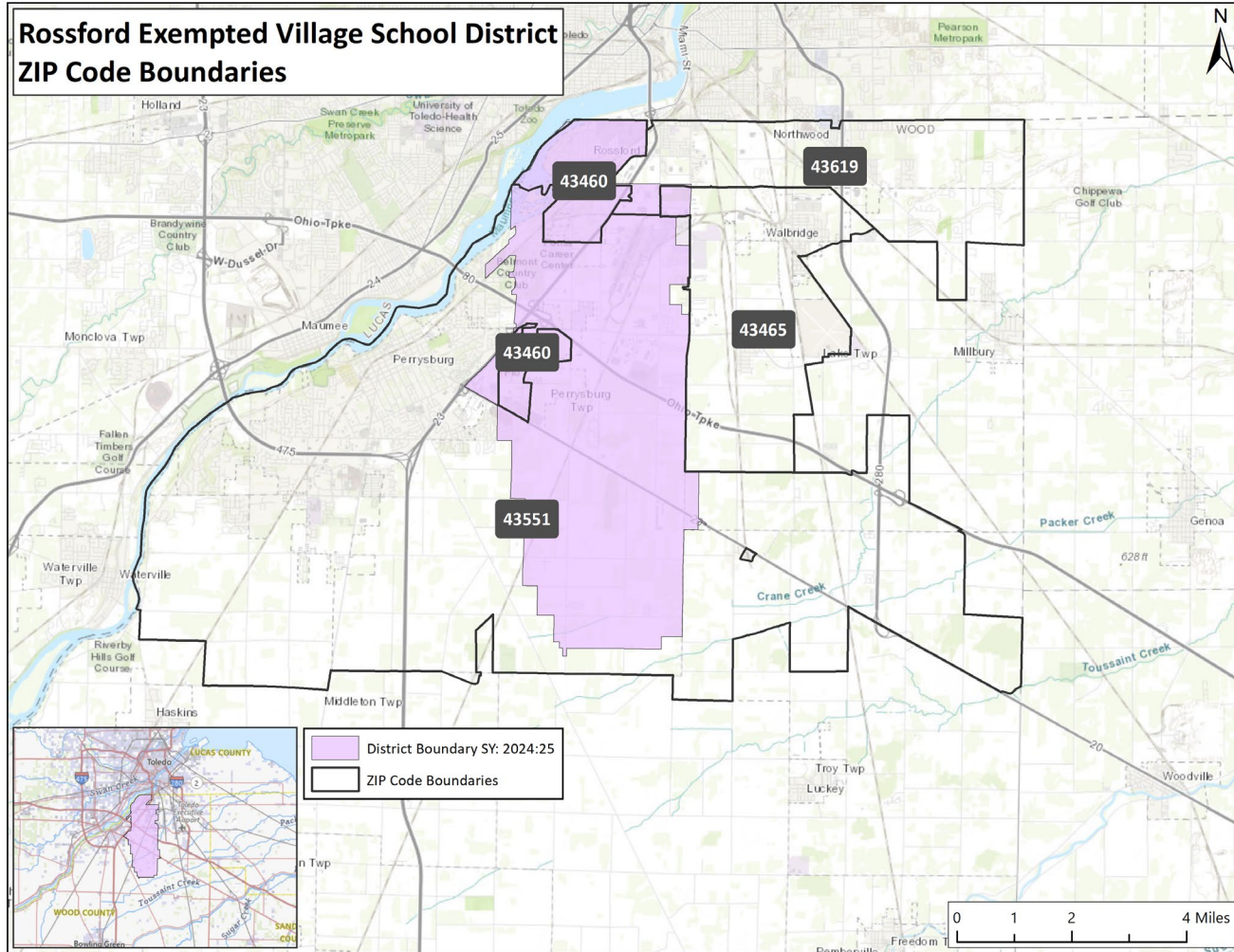


Cohort Survival Method

- Uses **historical** live birth data and **historical** student enrollment to “age” (or progress) a known population (cohort) throughout the school grades
- Survival ratios analyzed
- Projection ratios developed

ENROLLMENT PROJECTIONS

BIRTH DATA



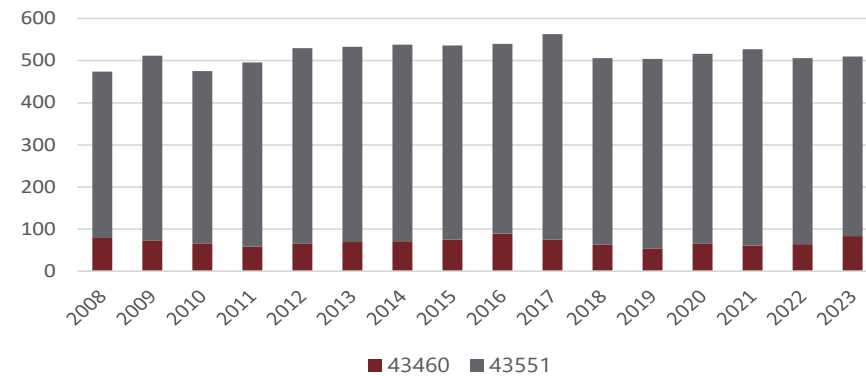
ROSSFORD EXEMPTED VILLAGE SCHOOL DISTRICT ZIP CODES

RESIDENT LIVE BIRTH COUNTS

Year	43460	43465	43551	43619
2008	79	62	395	81
2009	73	46	439	80
2010	66	53	409	73
2011	58	56	438	79
2012	66	52	464	63
2013	69	65	464	78
2014	71	58	467	75
2015	75	56	461	98
2016	89	63	451	88
2017	75	43	488	82
2018	63	57	443	82
2019	53	65	451	63
2020	66	48	450	69
2021	61	41	466	93
2022	64	52	442	63
2023	83	58	427	74

Source: Ohio Department of Health

ROSSFORD EXEMPTED VILLAGE SCHOOL DISTRICT ZIP CODES RESIDENT LIVE BIRTH COUNTS



ENROLLMENT PROJECTIONS

SURVIVAL RATIOS

Survival Ratios - District-wide

from	to	Birth to K	K to 1	Birth to 1	1 to 2	2 to 3	3 to 4	4 to 5	5 to 6	6 to 7	7 to 8	8 to 9	9 to 10	10 to 11	11 to 12
2015-16	2016-17	20.16%	92.13%	24.63%	97.48%	94.23%	89.52%	99.17%	96.52%	105.93%	100.00%	97.66%	93.94%	95.80%	98.68%
2016-17	2017-18	20.00%	97.00%	19.56%	95.73%	95.69%	88.78%	105.41%	96.64%	99.10%	89.60%	98.33%	100.80%	105.38%	97.08%
2017-18	2018-19	16.89%	92.45%	18.49%	101.03%	100.89%	99.10%	95.40%	98.29%	92.17%	100.00%	99.11%	102.54%	95.24%	94.90%
2018-19	2019-20	21.38%	108.89%	18.39%	109.18%	100.00%	96.46%	105.45%	102.41%	95.65%	104.72%	103.64%	96.40%	99.17%	99.17%
2019-20	2020-21	16.98%	93.91%	20.07%	92.86%	93.46%	103.06%	86.24%	95.69%	95.29%	99.09%	100.90%	106.14%	102.80%	100.00%
2020-21	2021-22	23.89%	107.69%	18.28%	104.63%	94.51%	104.00%	97.03%	105.32%	95.50%	97.53%	105.50%	102.68%	97.52%	93.64%
2021-22	2022-23	18.12%	99.22%	23.70%	105.10%	106.19%	111.63%	99.04%	105.10%	96.97%	89.62%	101.27%	92.17%	96.52%	87.29%
2022-23	2023-24	24.31%	109.80%	19.89%	100.00%	111.65%	119.17%	100.00%	104.85%	105.83%	105.21%	108.42%	101.25%	100.94%	106.31%
2023-24	2024-25	23.41%	104.07%	25.30%	103.57%	102.34%	106.96%	90.91%	100.00%	100.93%	94.50%	103.96%	89.32%	104.94%	105.61%
mean simple all years		20.57%	100.57%	20.92%	101.06%	99.89%	102.07%	97.63%	100.54%	98.60%	97.81%	102.09%	98.36%	99.81%	98.07%
std. dev. simple all years		2.89%	7.19%	2.82%	5.14%	6.18%	9.92%	6.24%	3.97%	4.81%	5.69%	3.58%	5.64%	3.89%	5.88%
mean simple 5 years		21.34%	102.94%	21.45%	101.23%	101.63%	108.96%	94.64%	102.19%	98.90%	97.19%	104.01%	98.31%	100.55%	98.57%
std. dev. simple 5 years		3.50%	6.45%	2.92%	5.09%	7.73%	6.61%	5.88%	4.26%	4.48%	5.76%	3.12%	7.20%	3.53%	8.11%
mean simple 3 years		21.95%	104.36%	22.96%	102.89%	106.73%	112.58%	96.65%	103.32%	101.24%	96.44%	104.55%	94.25%	100.80%	99.73%
std. dev. simple 3 years		3.35%	5.30%	2.78%	2.62%	4.68%	6.16%	4.99%	2.88%	4.44%	7.97%	3.61%	6.23%	4.21%	10.78%
mean simple 2 years		23.86%	106.93%	22.59%	101.79%	107.00%	113.06%	95.45%	102.43%	103.38%	99.85%	106.19%	95.29%	102.94%	105.96%
std. dev. simple 2 years		0.63%	4.06%	3.82%	2.53%	6.58%	8.63%	6.43%	3.43%	3.46%	7.58%	3.15%	8.44%	2.82%	0.49%
mean weighted all years		21.93%	103.73%	22.01%	102.26%	103.08%	108.29%	95.83%	102.03%	99.91%	97.46%	104.07%	96.18%	101.07%	100.30%
std. dev. weighted all years		2.88%	5.70%	3.00%	3.93%	6.33%	8.01%	5.51%	3.40%	4.32%	5.83%	3.12%	6.45%	3.64%	7.43%
mean weighted 5 years		22.86%	104.88%	23.18%	102.62%	104.50%	110.36%	94.43%	102.04%	101.24%	96.94%	104.78%	93.93%	102.42%	102.74%
std. dev. weighted 5 years		2.35%	4.20%	2.92%	2.69%	5.58%	6.12%	4.92%	2.98%	3.62%	5.84%	2.66%	6.51%	3.46%	7.20%
mean weighted 3 years		23.36%	104.88%	24.29%	103.00%	104.13%	109.28%	92.82%	101.05%	101.63%	96.18%	104.64%	91.53%	103.91%	105.01%
std. dev. weighted 3 years		1.36%	3.01%	2.51%	1.74%	4.35%	5.69%	4.49%	2.47%	2.55%	5.23%	2.23%	5.54%	2.60%	4.40%
mean weighted 2 years		23.46%	104.34%	25.04%	103.40%	102.79%	107.54%	91.34%	100.23%	101.16%	95.01%	104.17%	89.89%	104.75%	105.64%
std. dev. weighted 2 years		0.27%	1.73%	1.63%	1.08%	2.80%	3.68%	2.74%	1.46%	1.48%	3.23%	1.34%	3.59%	1.20%	0.21%

HISTORICAL ENROLLMENT

Historical Enrollment - District-wide

Grade	2015-16	2016-17	2017-18	2018-19	2019-20	2020-21	2021-22	2022-23	2023-24	2024-25
PK3	0	0	32	32	32	32	32	32	32	32
PK4	0	0	32	32	32	32	32	32	32	32
K	127	100	106	90	115	91	129	102	123	118
1	119	117	97	98	98	108	98	128	112	128
2	104	116	112	98	107	91	113	103	128	116
3	124	98	111	113	98	100	86	120	115	131
4	120	111	87	110	109	101	104	96	143	123
5	115	119	117	83	116	94	98	103	96	130
6	118	111	115	115	85	111	99	103	108	96
7	120	125	110	106	110	81	106	96	109	109
8	128	120	112	110	111	109	79	95	101	103
9	99	125	118	111	114	112	115	80	103	105
10	143	93	126	121	107	121	115	106	81	92
11	152	137	98	120	120	110	118	111	107	85
12	118	150	133	93	119	120	103	103	118	113
K - 12 Total	1,587	1,522	1,442	1,368	1,409	1,349	1,363	1,346	1,444	1,449
Grand Total	1,587	1,522	1,506	1,432	1,473	1,413	1,427	1,410	1,508	1,513

Source: Rossford Exempted Village School District Enrollment Data, Oct. 22, 2024 Count

Note:
Historical enrollment **EXCLUDES**
students who open-enroll into REVSD

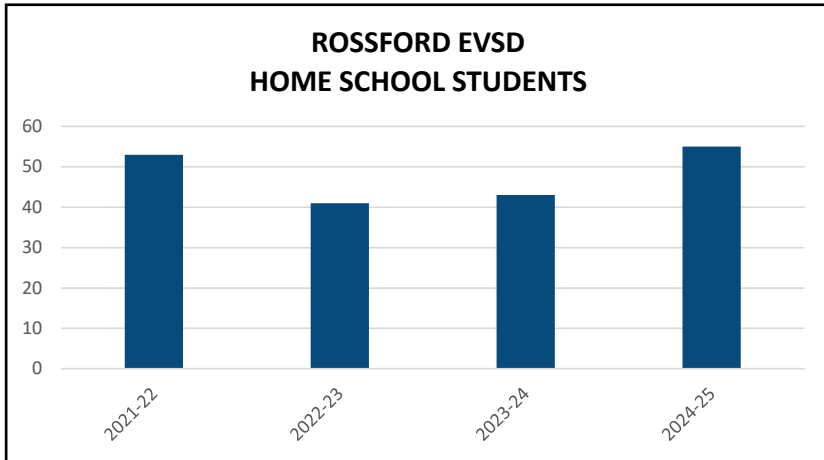
Historical Enrollment - District-wide

Grade	2015-16	2016-17	2017-18	2018-19	2019-20	2020-21	2021-22	2022-23	2023-24	2024-25
PK	0	0	64	64	64	64	64	64	64	64
K - 5	709	661	630	592	643	585	628	652	717	746
6 - 12	878	861	812	776	766	764	735	694	727	703
K - 12 Total	1,587	1,522	1,442	1,368	1,409	1,349	1,363	1,346	1,444	1,449
Grand Total	1,587	1,522	1,506	1,432	1,473	1,413	1,427	1,410	1,508	1,513

Source: Rossford Exempted Village School District Enrollment Data, Oct. 22, 2024 Count

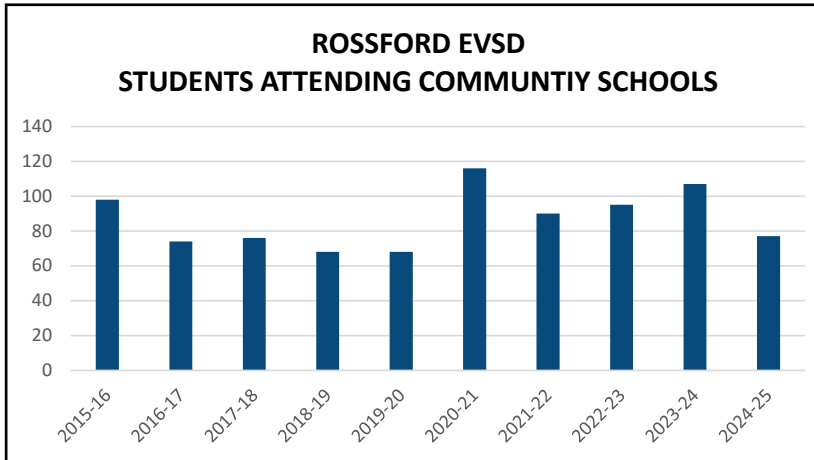
OTHER ENROLLMENT

**ROSSFORD EVSD
HOME SCHOOL STUDENTS**



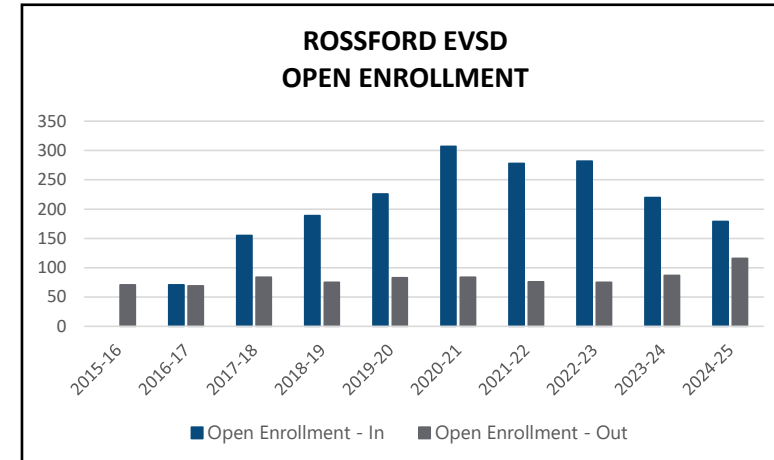
2024-25: 55

**ROSSFORD EVSD
STUDENTS ATTENDING COMMUNITY SCHOOLS**



2024-25: 77

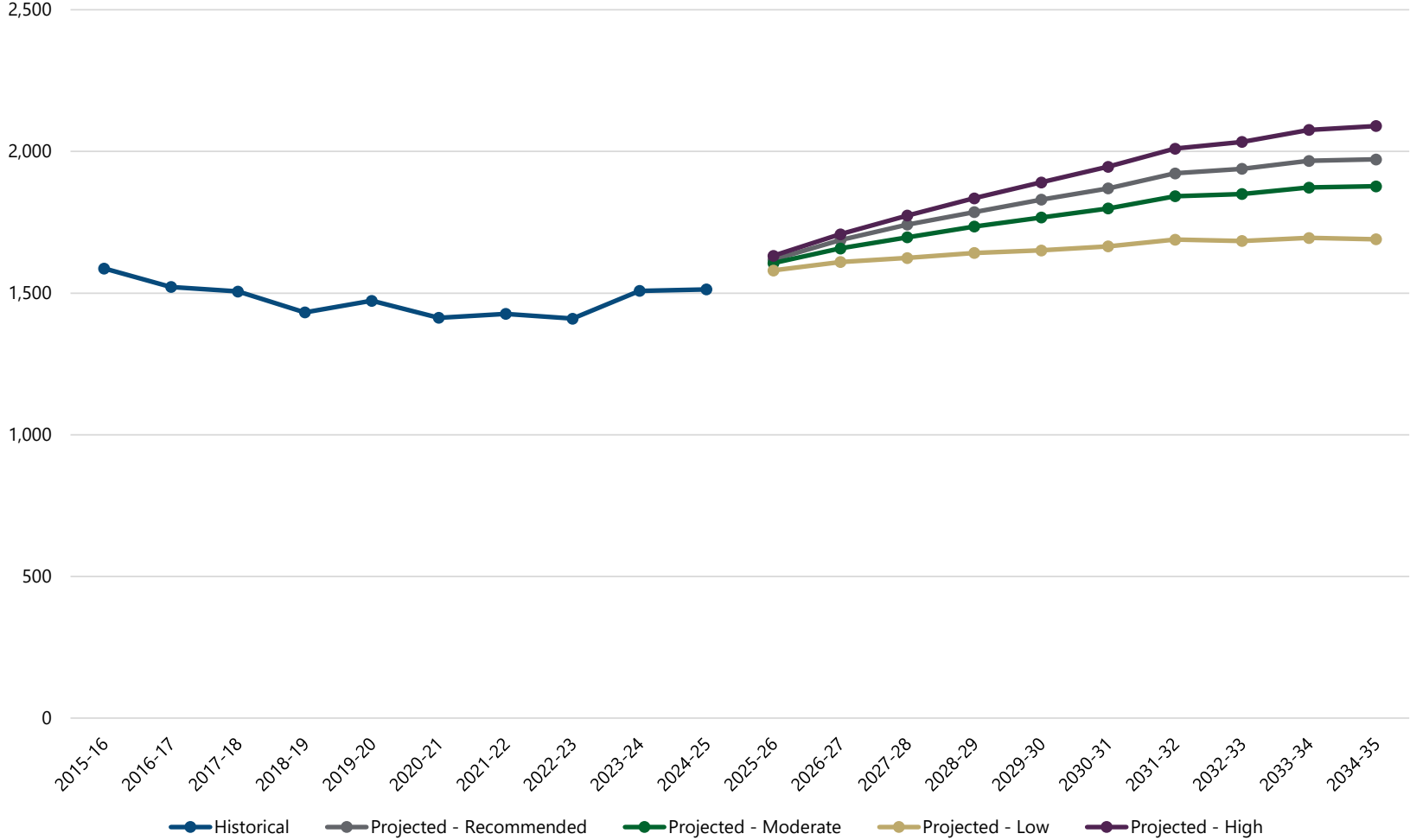
**ROSSFORD EVSD
OPEN ENROLLMENT**



2024-25: +179, -116

HISTORICAL AND PROJECTED

HISTORICAL & PROJECTED ENROLLMENT - ROSSFORD EXEMPTED VILLAGE SCHOOL DISTRICT



ENROLLMENT PROJECTIONS

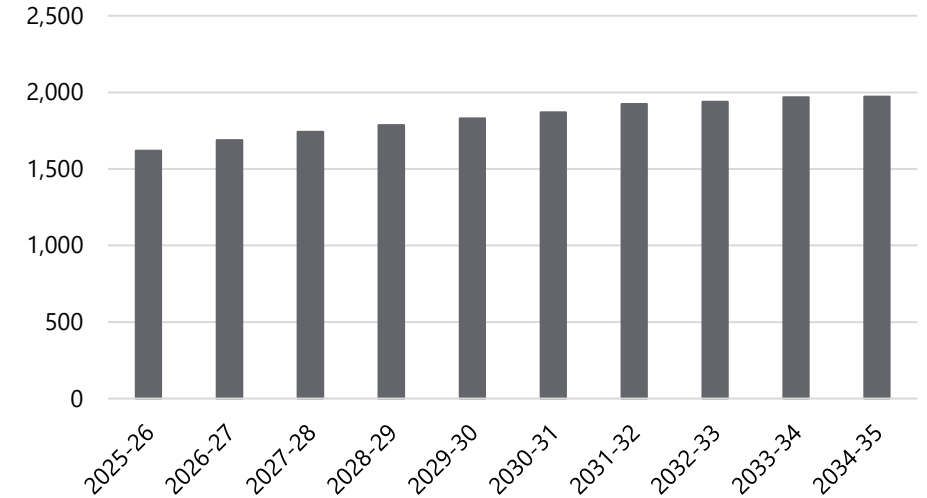
PROJECTED ENROLLMENT

Projected Enrollment - Recommended - District-wide

Grade	2025-26	2026-27	2027-28	2028-29	2029-30	2030-31	2031-32	2032-33	2033-34	2034-35
PK3	64	64	64	64	64	64	64	64	64	64
PK4	64	64	64	64	64	64	64	64	64	64
K	121	123	119	121	121	121	121	121	121	121
1	124	126	129	124	127	127	127	127	127	127
2	132	128	131	134	129	131	131	131	131	131
3	121	138	133	136	139	134	136	136	136	136
4	143	132	151	146	149	152	146	149	149	149
5	120	140	129	147	142	145	148	143	146	146
6	133	123	143	132	150	145	148	151	146	148
7	96	133	123	143	132	151	146	149	152	147
8	106	94	129	119	139	128	146	141	144	147
9	108	111	98	135	125	145	134	153	148	151
10	103	106	109	96	133	123	143	132	150	145
11	94	106	109	111	99	136	126	146	135	154
12	89	99	111	114	117	104	143	132	154	142
K - 12 Total	1,490	1,559	1,614	1,658	1,702	1,742	1,795	1,811	1,839	1,844
Grand Total	1,618	1,687	1,742	1,786	1,830	1,870	1,923	1,939	1,967	1,972

Source: Woolpert

PROJECTED ENROLLMENT - RECOMMENDED - DISTRICT-WIDE



Projected Enrollment - Recommended - District-wide

Grade	2025-26	2026-27	2027-28	2028-29	2029-30	2030-31	2031-32	2032-33	2033-34	2034-35
PK	128	128	128	128	128	128	128	128	128	128
K - 5	761	787	792	808	807	810	809	807	810	810
6 - 12	729	772	822	850	895	932	986	1,004	1,029	1,034
K - 12 Total	1,490	1,559	1,614	1,658	1,702	1,742	1,795	1,811	1,839	1,844
Grand Total	1,618	1,687	1,742	1,786	1,830	1,870	1,923	1,939	1,967	1,972

Source: Woolpert

ENROLLMENT PROJECTIONS

FACTORS TO CONSIDER

- It is important to continue to monitor enrollment trends and live birth trends as these factors impact future enrollment
- The following factors can also cause significant change in projected student enrollment
 - Boundary adjustments
 - New school openings
 - School closures
 - Changes / additions in program offerings
 - Preschool programs
 - Change in grade configuration
 - Interest rates / unemployment shifts
 - Magnet / charter / private school opening or closure
 - Zoning changes
 - Annexations
 - Unplanned new housing activity
 - Planned, but not built, housing
 - School voucher programs

A row of yellow school buses is parked in a grassy field. The buses are yellow with black stripes and have "SCHOOL BUS" written on the front. The field is green with small yellow flowers. The sky is blue with white clouds. The text "STUDENT POTENTIAL ANALYSIS" is overlaid in the center of the image.

STUDENT POTENTIAL ANALYSIS

STUDENT POTENTIAL ANALYSIS

INTRODUCTION

Measures the impact that future housing has on student enrollment

- Different methodology from enrollment projections



Study is based on student yields

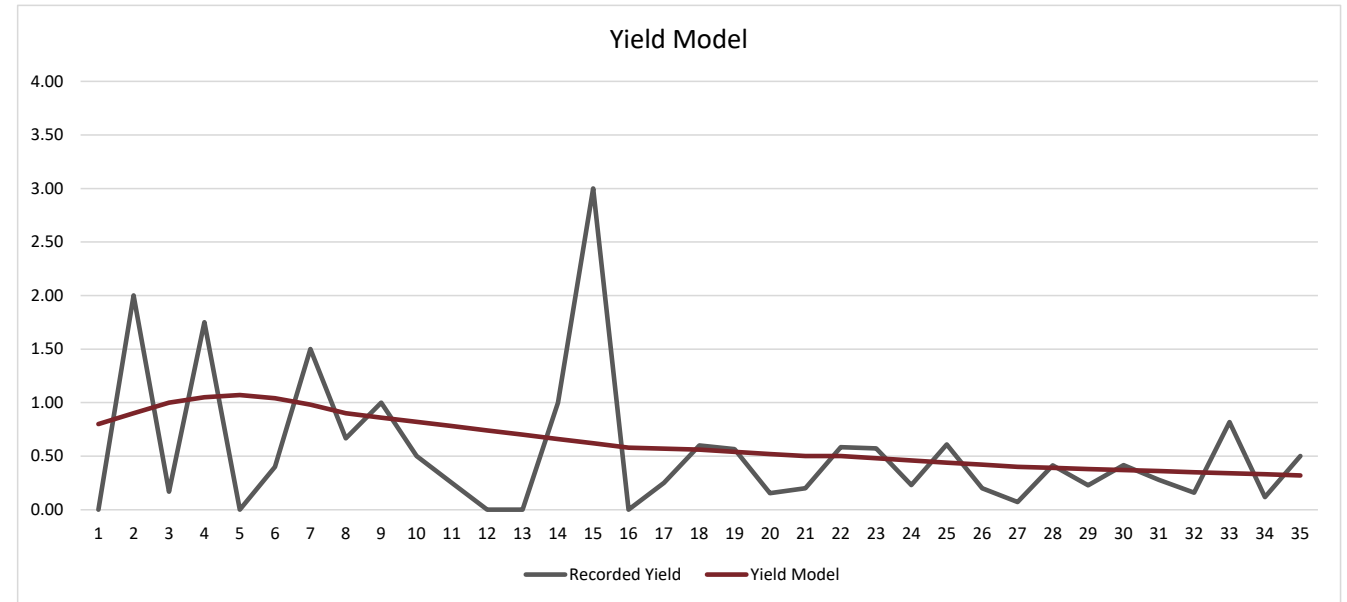
- Ratio of students divided by housing units
- 5 students / 10 homes = 0.5 students/unit

STUDENT POTENTIAL ANALYSIS

YIELD MODEL

K-12 Student Yields	Assessed Value of Home															TOTAL
	No Data	< 50K	50K - 100K	100K - 150K	150K - 200K	200K - 250K	250K - 300K	300K - 350K	350K - 400K	400K - 450K	450K - 500K	500K - 550K	550K - 600K	600K - 650K	> 650K	
>35	-	0.08	0.32	0.38	0.33	0.26	0.20	0.14	0.00	0.50	0.20	0.00	0.00	0.75	0.00	0.29
35	-	-	-	-	1.00	1.00	0.00	-	-	0.00	-	-	-	-	0.00	0.50
34	-	-	-	0.00	0.67	0.00	0.00	0.00	0.00	-	-	-	-	-	-	0.12
33	-	-	-	-	0.40	1.11	1.25	0.00	1.00	-	-	0.00	-	-	-	0.82
32	-	-	-	-	0.00	0.13	0.25	0.33	0.00	0.00	0.00	-	-	0.00	-	0.16
31	-	-	0.00	0.00	0.00	0.43	0.25	0.00	-	-	0.00	-	-	-	0.00	0.28
30	-	-	-	-	1.00	0.33	0.44	1.00	0.00	-	0.00	-	-	-	-	0.42
29	-	-	-	0.00	0.00	0.24	0.29	0.20	-	-	-	-	-	0.00	-	0.23
28	-	-	-	-	2.00	0.50	0.32	0.00	0.25	-	-	-	-	-	0.00	0.41
27	-	1.00	-	-	0.00	0.00	0.00	0.00	0.00	0.00	-	-	-	-	0.00	0.07
26	-	-	-	-	-	0.50	0.00	-	-	-	-	0.00	-	-	-	0.20
25	-	-	-	0.00	0.00	1.20	0.55	0.50	-	-	-	0.00	-	-	-	0.61
24	-	-	-	-	-	0.00	0.38	0.00	-	-	-	-	-	-	-	0.23
23	-	-	-	-	-	0.00	1.33	0.00	0.00	-	-	-	-	-	-	0.57
22	-	-	-	-	-	0.00	1.33	0.25	0.00	0.00	0.00	-	-	-	2.00	0.58
21	-	-	-	-	0.00	0.00	0.25	-	0.00	-	-	-	-	-	-	0.20
20	-	-	-	-	-	0.05	0.28	0.00	-	-	-	-	-	-	0.00	0.15
19	-	-	-	-	-	0.57	0.70	0.67	0.00	-	0.00	-	-	-	0.00	0.57
18	-	-	-	0.00	-	0.00	0.00	1.25	-	1.00	-	-	-	-	-	0.60
17	-	-	-	-	-	-	0.00	-	-	-	-	-	0.00	-	0.00	0.25
16	-	-	-	-	-	-	0.00	-	-	-	-	-	-	-	-	0.00
15	-	-	-	-	-	-	6.00	-	3.00	-	-	-	-	-	0.00	3.00
14	-	-	-	-	-	-	-	1.00	-	-	-	-	-	-	-	1.00
13	-	-	-	-	-	0.00	-	-	-	-	-	-	-	-	0.00	0.00
12	-	-	-	0.00	-	-	-	-	-	-	-	-	-	-	-	0.00
11	-	-	-	-	-	-	0.00	-	0.50	-	-	-	-	-	-	0.25
10	-	-	-	1.00	-	0.00	-	-	-	-	-	-	-	-	-	0.50
9	-	-	-	-	-	-	-	-	1.00	-	-	-	-	-	-	1.00
8	-	-	-	0.50	-	-	1.00	0.00	1.00	-	-	-	-	-	-	0.67
7	-	-	-	-	-	-	-	-	1.50	-	-	-	-	-	-	1.50
6	-	-	-	-	-	-	0.50	-	-	-	-	-	-	-	0.00	0.40
5	-	-	-	-	-	-	-	-	-	-	-	-	-	-	-	-
4	-	-	-	-	-	-	1.75	-	-	-	-	-	-	-	-	1.75
3	-	-	-	-	-	-	0.17	-	-	-	-	-	-	-	-	0.17
2	-	-	-	-	-	-	-	0.00	-	-	-	-	-	1.67	-	2.00
1	-	-	-	-	-	-	-	0.00	-	-	-	-	-	-	-	0.00
0	-	-	-	-	-	-	-	-	-	-	-	-	-	-	-	-
TOTAL	-	0.09	0.32	0.38	0.34	0.29	0.37	0.20	0.24	0.48	0.17	0.00	0.00	0.89	0.06	0.31

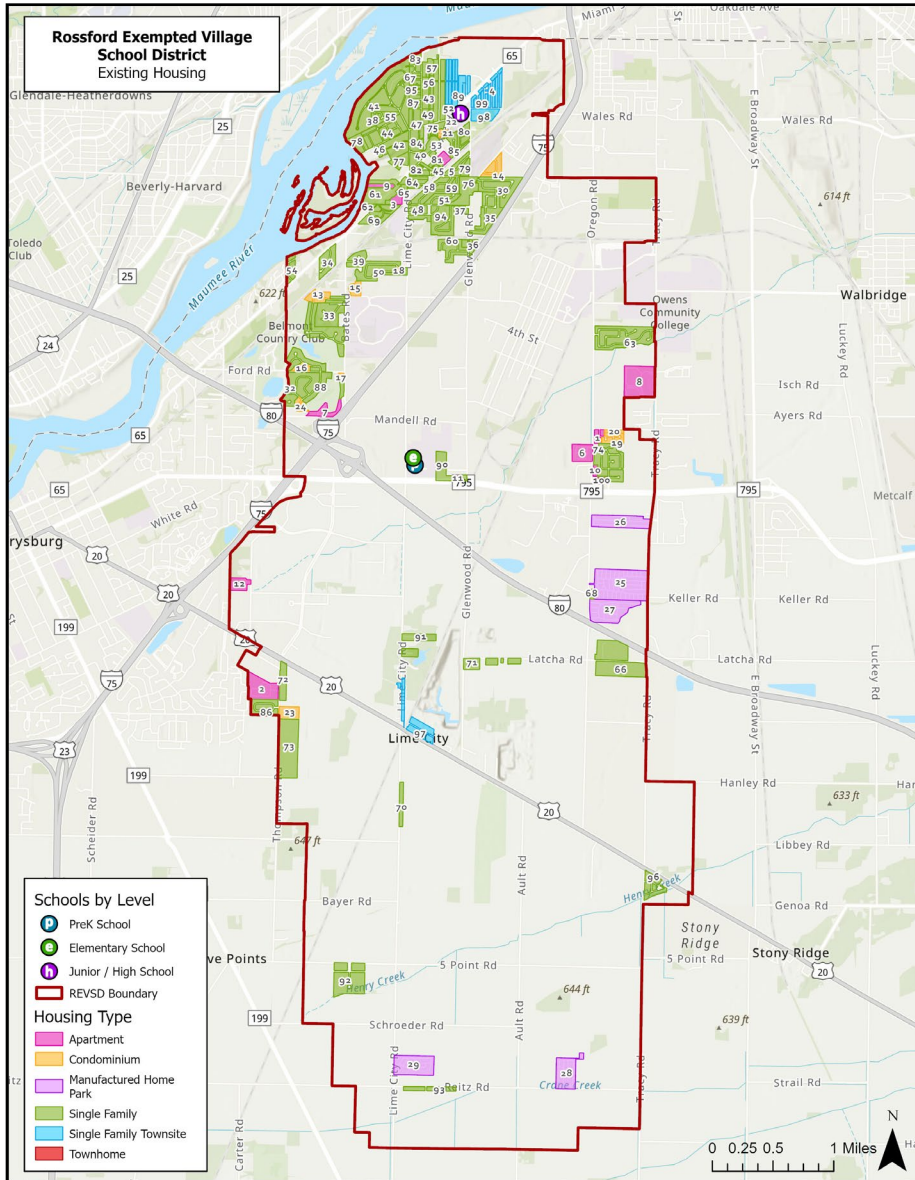
Source: Wood County, Rossford Exempted Village Schools



Mature Yield = 0.29 students per unit

STUDENT POTENTIAL ANALYSIS

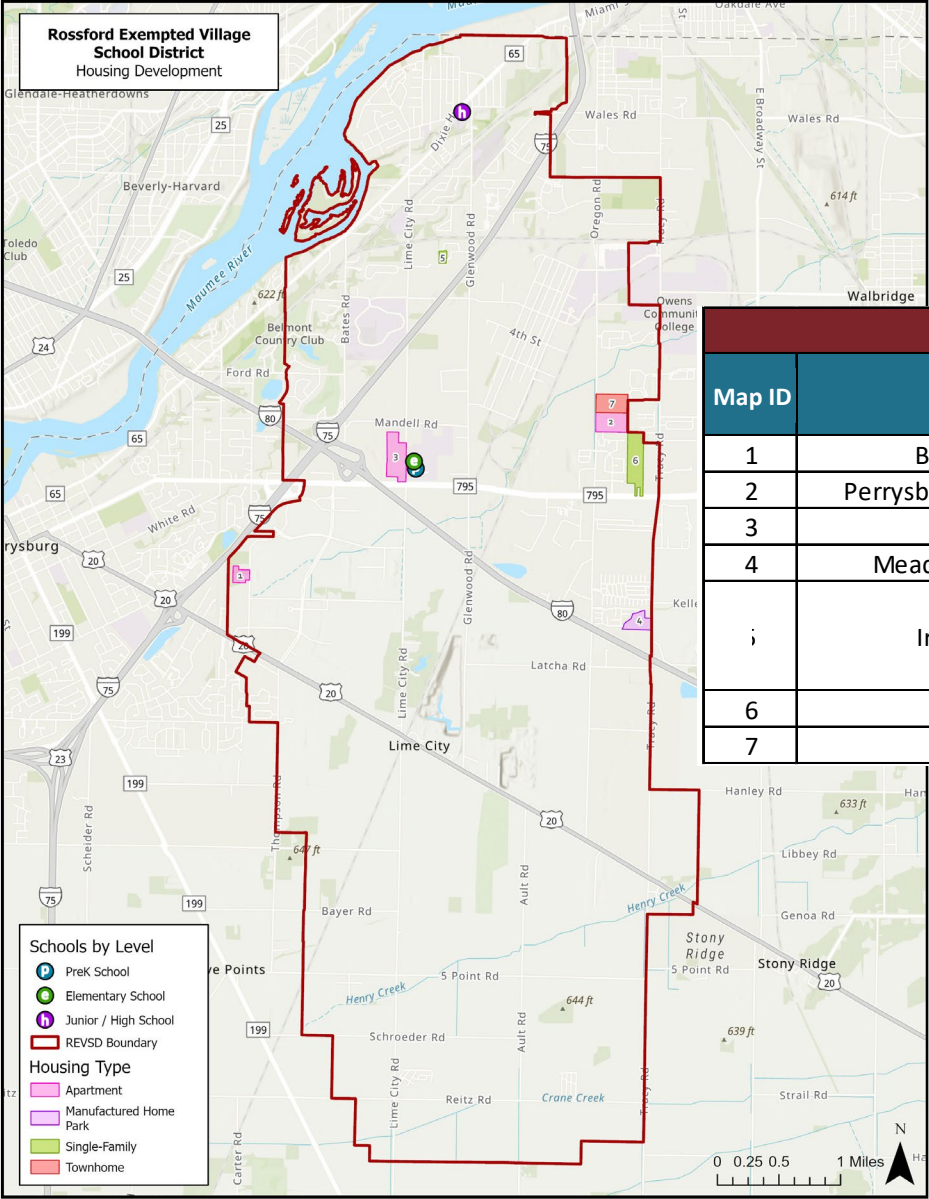
HOUSING



Housing Type	Units	Students	Yield
Apartment	1,533	81	0.05
Condominium	285	24	0.08
Townhome	28	4	0.14
Multi-Family Subtotal	1,846	109	0.06
Subdivided Single-Family	2,386	714	0.30
Single-Family Townsite	449	165	0.37
Single-Family Subtotal	2,835	879	0.31
Mobile Home Park	1,068	287	0.27
TOTAL	5,749	1,275	0.22

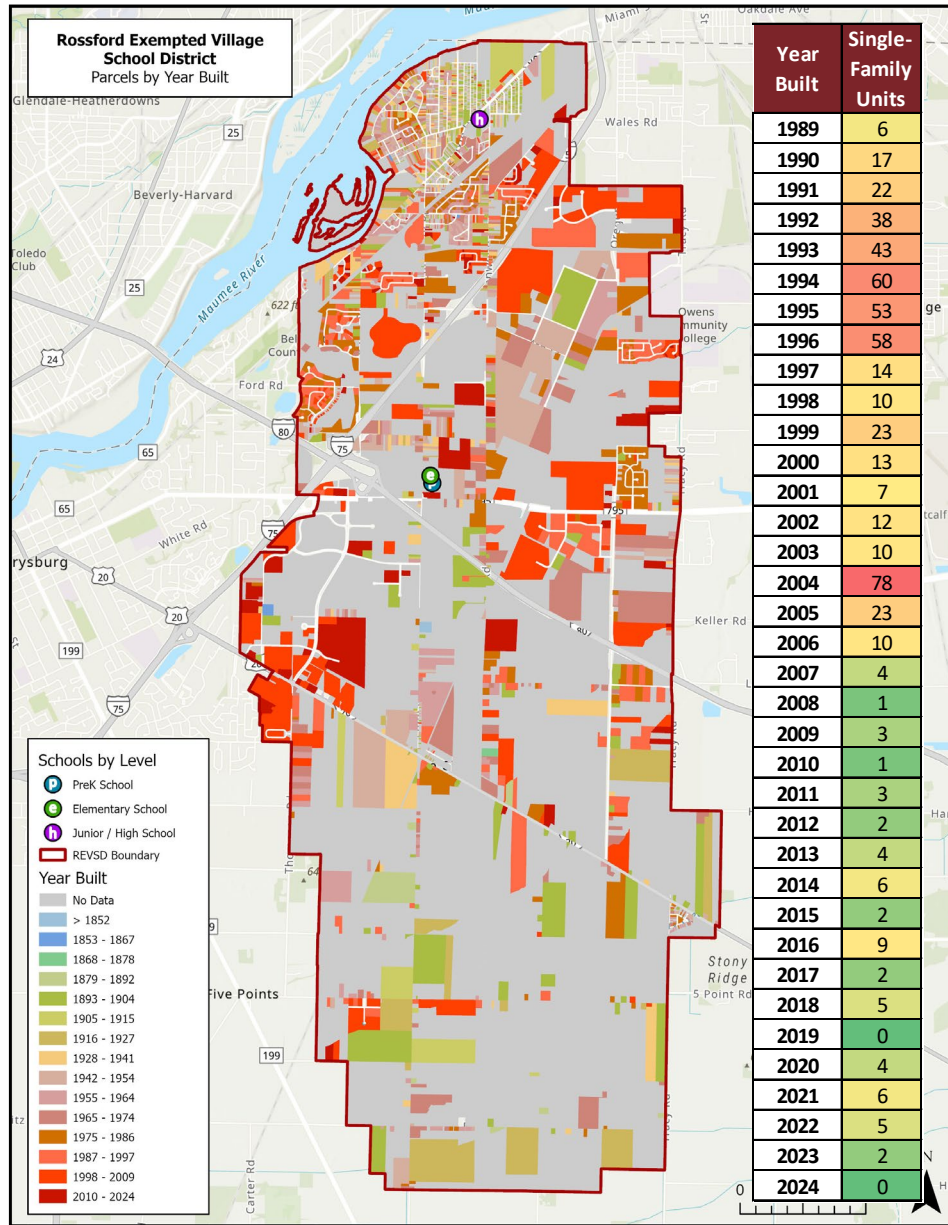
STUDENT POTENTIAL ANALYSIS

HOUSING DEVELOPMENT



Development Information					Units at Build Out	Maximum Enrollment	Mature Enrollment
Map ID	Name	Housing Type	Project Status	Source			
1	Brookfield Place	Apartment	Approved/Under Construction	Perrysburg Twp	82	4	4
2	Perrysburg Place Apartments	Apartment	Approved/Under Construction	Perrysburg Twp	576	30	30
3	Redwood	Apartment	Planned/Pending Approval	Perrysburg Twp	136	7	7
4	Meadows of Perrysburg	Mobile Home Park	Approved/Under Construction	Perrysburg Twp	82	22	22
5	Ironwood Plat 5	Single-Family	Final Plat approval has been submitted and should have approval by end of 2024.	City of Rossford	12	13	4
6	Latty LLC	Single-Family	Planned/Pending Approval	Perrysburg Twp	130	139	38
7	Bonita Farms	Townhome	Approved/Under Construction	Perrysburg Twp	180	26	26

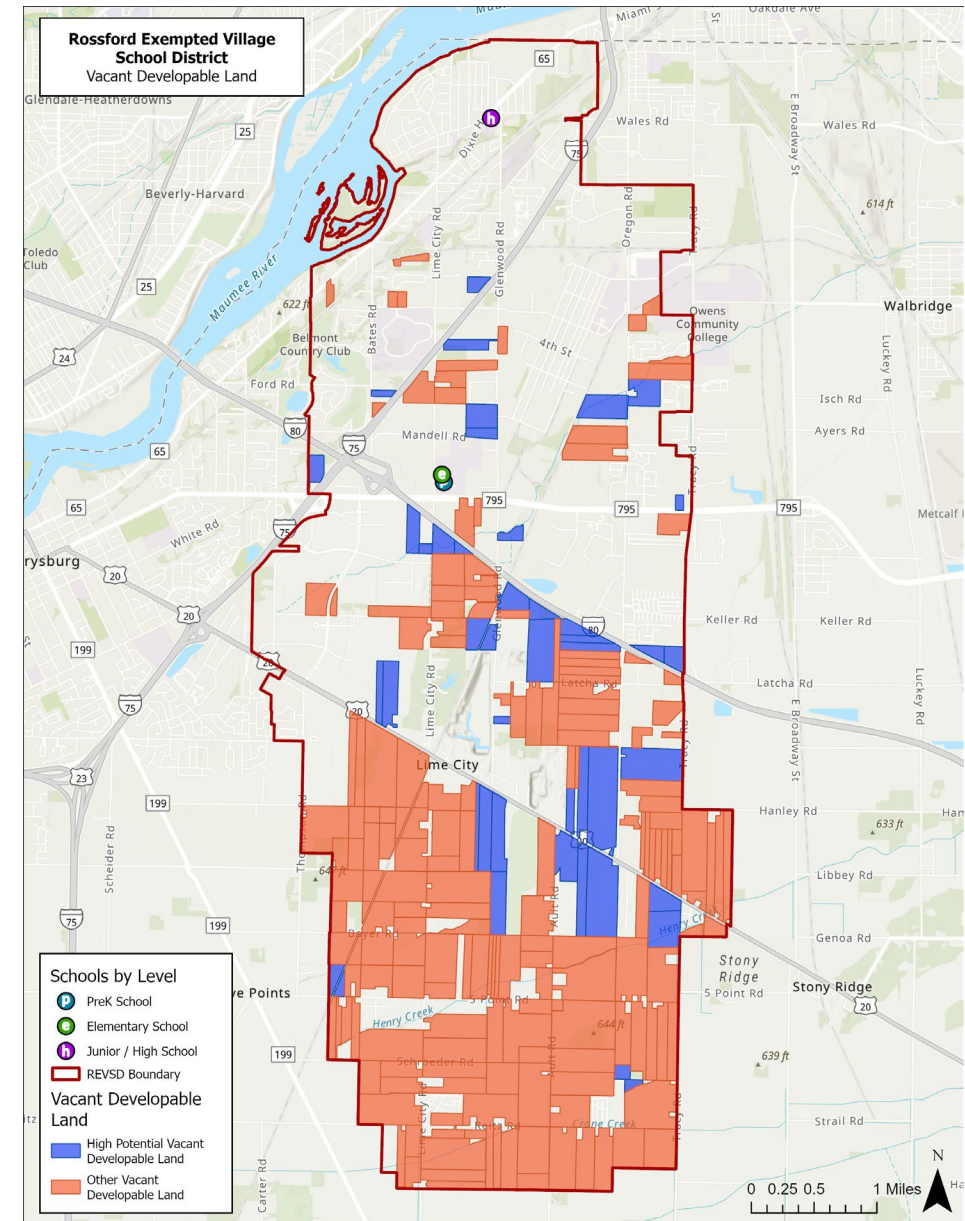
STUDENT POTENTIAL ANALYSIS



BUILD OUT

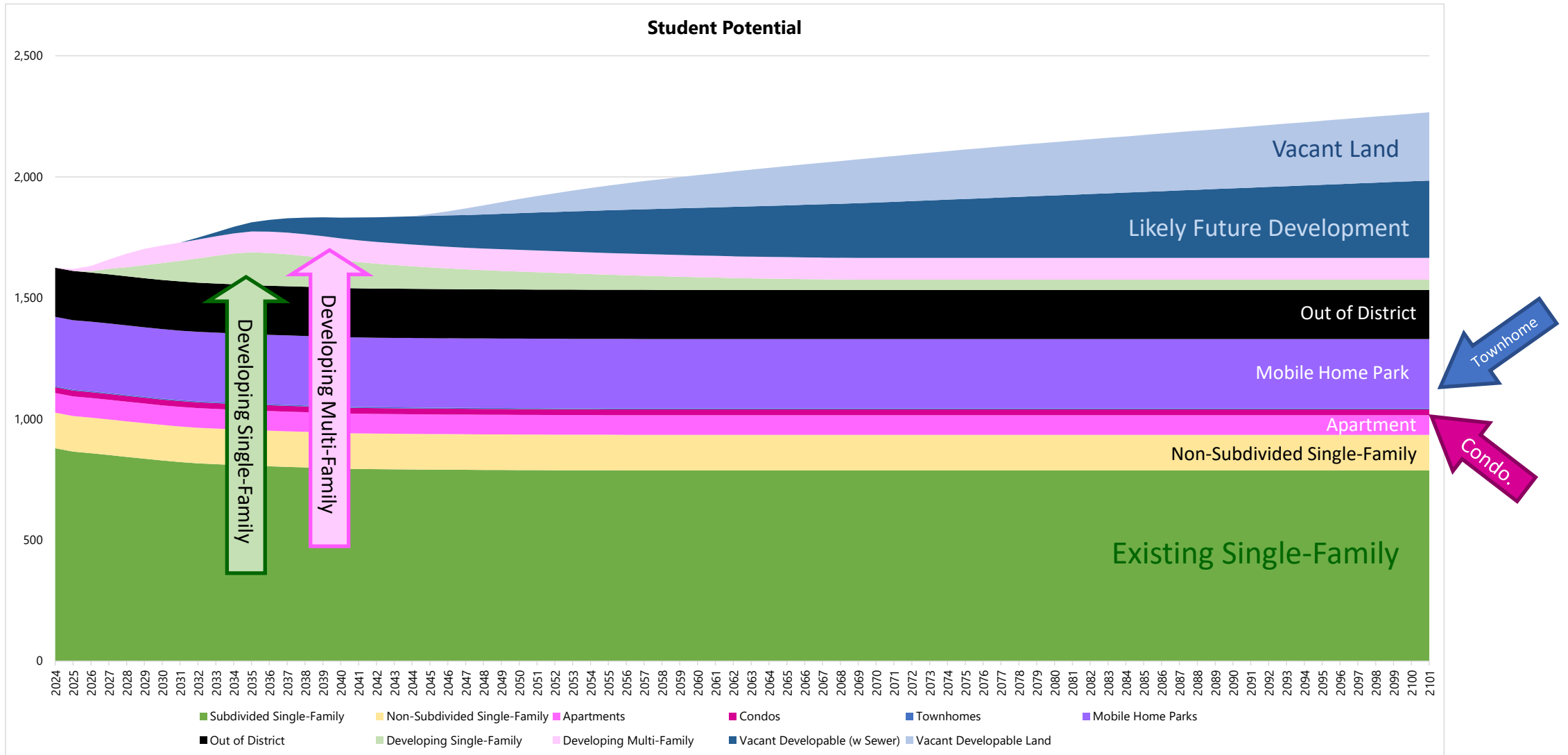
Acreage by Land Use	Acreage	Percentage
	Wood County	
Agriculture	7,330	45.0%
Industrial	2,668	16.4%
Commercial	2,632	16.2%
Residential	2,414	14.8%
Exempt	929	5.7%
Utilities	299	1.8%
TOTAL	16,272	-

Source: Wood County



STUDENT POTENTIAL ANALYSIS

10 UNITS/YEAR: BUILD-OUT



I M P A C T T O F A C I L I T I E S

School	Capacity	Enrollment Projections: Excludes students who transfer in to REVSD										
		2024-25	2025-26	2026-27	2027-28	2028-29	2029-30	2030-31	2031-32	2032-33	2033-34	2034-35
Elementary	900	83%	85%	87%	88%	90%	90%	90%	90%	90%	90%	90%
Junior High/High School	1,050	67%	69%	74%	78%	81%	85%	89%	94%	96%	98%	98%

School	Capacity	Student Potential Analysis: Leaves students who transfer into REVSD consistent										
		2024-25	2025-26	2026-27	2027-28	2028-29	2029-30	2035-36	2040-41	2045-46	2050-51	2055-56
Elementary	900	84%	83%	84%	85%	86%	87%	93%	94%	95%	98%	101%
Junior High/High School	1,050	83%	83%	84%	85%	86%	87%	93%	94%	95%	98%	101%



WOOLPERT



THANK YOU
WE APPRECIATE YOUR TIME