

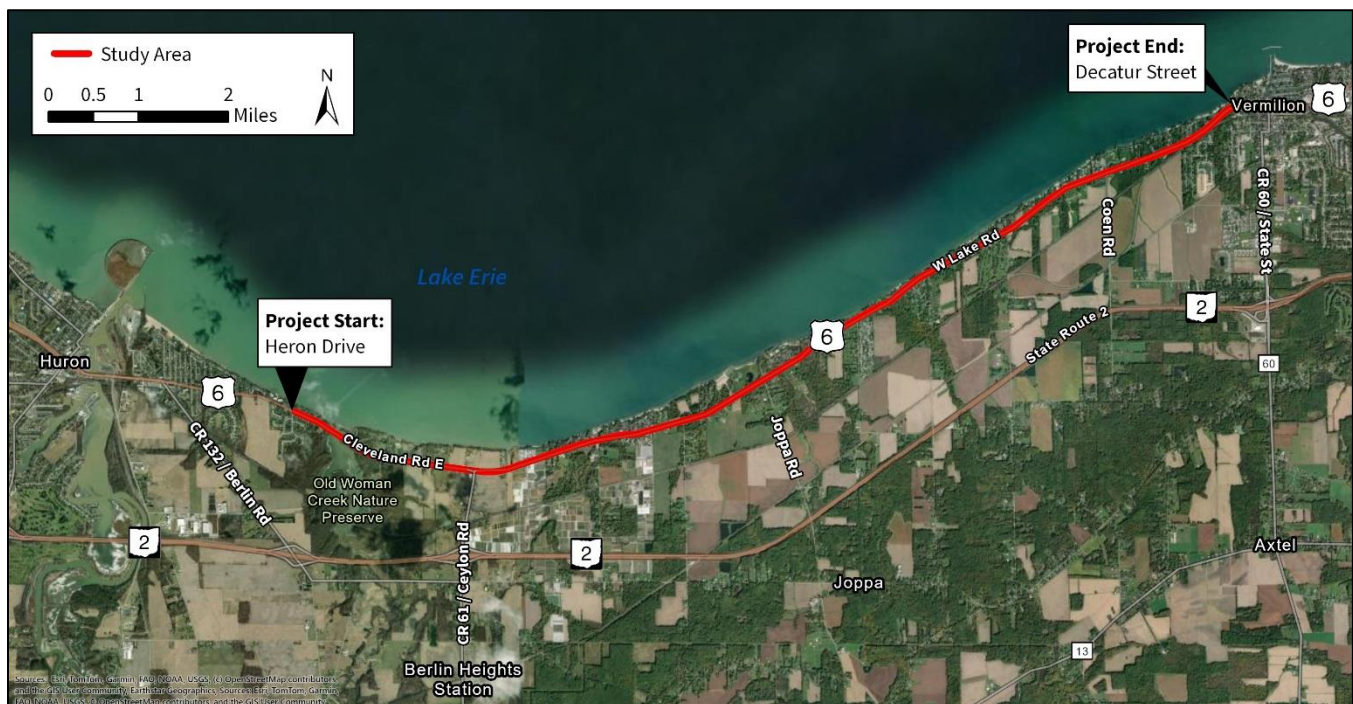
Project Overview

The Erie Regional Planning Commission (ERPC) is performing a planning study to look at improvements along US 6 between the cities of Huron and Vermilion to improve multimodal transportation on this segment of US-6 and throughout Erie County.

ERPC completed a previous study (Phase 1) in 2019 that studied US 6 between the cities of Sandusky and Huron. This project, Phase 2, covers US 6 from Heron Drive in Huron to Decatur Street in Vermilion. ERPC evaluated alternatives to add multimodal connections along US 6 that will tie-in with the recommendations from the Phase 1 project, which are currently under design, as well as with larger lakefront trail connectivity efforts in northern Ohio.

Project Area

A map showing the planning study area for the project is shown below.



Project Schedule

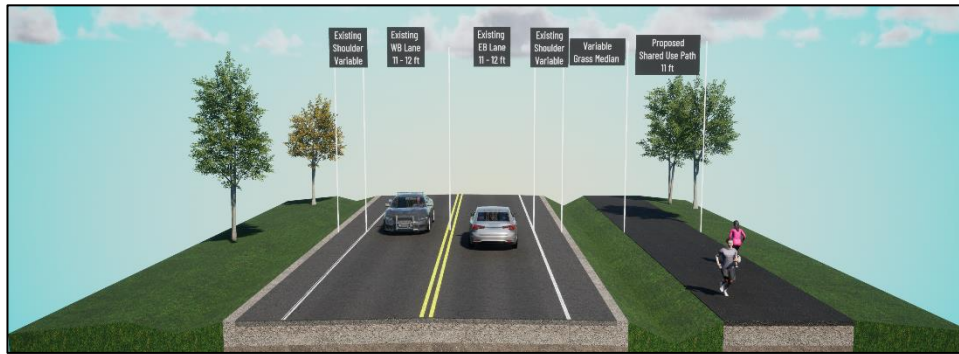
- Spring 2025 – Project Kick-off and Initial Data Gathering
- Summer 2025 – Finalize Data Gathering
- Summer/Fall 2025 – Analysis and Alternatives Evaluation Completed
- **Fall/Winter 2025 – Stakeholder and Public Involvement**
 - Share Study Recommendations
- Spring 2026 – Complete Final Planning Study

Project Alternatives

Two multimodal alternatives for the project were studied and evaluated:

- The **North Alternative** would add a shared-use path on the north side of US 6, separated from the road by a grass median, and with crossings to the south provided at key locations. Additionally, a road diet would be implemented along the 4-lane section of US 6, reducing it to 3 lanes (1 through lane in each direction with a center two-way left turn lane).
- The **South Alternative** would add a shared-use path on the south side of US 6, separated from the road by a grass median, and with crossings to the north provided at key locations. Additionally, a road diet would be implemented along the 4-lane section of US 6, reducing it to 3 lanes (1 through lane in each direction with a center turn lane).

Based on several factors considered in the evaluation process, including pedestrian safety, topography challenges and space constraints, existing utilities and drainage structures, and vehicular conflict points, the **South Alternative** is the recommended alternative for the project.



2-lane Typical Section with Proposed Shared-use Path on South Side



Proposed Road Diet Typical Section with Shared-use Path on South Side

Share your comments with us by Friday, January 9, 2026, via mail, email, or phone.

Kevin Cannon
ERPC Project Manager
Erie County Regional Planning
2900 Columbus Avenue
Sandusky, OH 44870

Email: KCannon@eriecounty.oh.gov
Phone: 419-627-7652

