

Little Wound School Reopening Framework

2021–2022 School Year



Creating a sacred environment
for students to achieve
academic and Lakota language
and cultural excellence.

Approved by School Board: July 12, 2021

Date of Last Review: July 12, 2021

Safe Return to In-Person Instruction & Continuity of Services Plan

Background

This plan serves as a transparent guide for stakeholders about how Little Wound School will work to mitigate the spread of COVID-19 and ensure that students have access to needed services for academic success.

Community Input

Little Wound School invites members of our community to provide ongoing feedback about this plan and its content. Our school will consider feedback when making revisions to this plan. You may share your thoughts on this plan by clicking on this link to a Google Forms survey.

Little Wound School Communication

We invite all members of our community to stay up-to-date with what is happening at Little Wound School. Here's how you can stay in touch:



Visit our website; [click here](#).



Follow us on Facebook; [click here](#).

Superintendent's Message

After more than a year, the staff of Little Wound School is excited to welcome back all our students to campus beginning with the fall 2021 semester. While COVID-19 has impacted all our lives, we are thrilled that falling infection rates and rising vaccination rates make a full return to campus safe and possible at this time.

This is also a time for us to renew our commitment to Little Wound School's life-changing mission: to create a sacred environment for students to achieve academic and Lakota language and cultural excellence.

This plan is carefully crafted to ensure that when students return to campus, not only are they safe, but they have the resources and supports needed to thrive academically and socially in a way that is grounded in Lakota culture and values.

Our Little Wound school board, teachers, administrators, and support staff are strong. Working together, we can ensure that Little Wound School's transition back to on-campus, in-person instruction is safe, successful, and sustained.

Sincerely,

Charles Cuny, Jr.
Superintendent



**Little Wound School
returns to in-person
learning for fall 2021.**

**Student safety, wellness,
& academic supports
remain our priorities.**

Table of Contents

Superintendent's Message	Page 03
Part 1: COVID-19 and Little Wound School	Page 06
Part 2: Recovery Framework	Page 07
A: Safe Reentry	Page 08
B: Supportive Environment	Page 09
C: Accelerating Academic Success	Page 10
Part 3: School-Specific Information	Page 11
Little Wound Elementary School	Page 12
Little Wound Middle School	Page 13
Little Wound High School	Page 14
Part 4: Exceptional Children's Program (ECP)	Page 15
Part 5: Sports and Activities	Page 16
Part 6: Transportation and Contact Tracing	Page 17
Part 7: Food Service	Page 18
Part 8: Remote Learning	Page 19
Part 9: Phased Prevention and Flexibility	Page 20
Resources and References	Page 22

Little Wound School remains committed to ensuring the health, safety, and academic wellbeing of our students and community.

Since the national pandemic began in early 2020, Little Wound's school board and leadership teams have always kept student and community interests front-of-mind as decisions are made. Throughout this period, Little Wound has consistently relied on the most up-to-date science and data about COVID-19; guidance from local, tribal, state, and national health agencies; and school- and community-specific needs.

The Little Wound School Board will continue providing this necessary leadership for our district and make well-informed decisions about a proper and safe response to COVID-19.

At this time, **a return to on-campus, in-person instruction for the fall 2021 semester has been approved by the school's board.**

The current low rate of COVID-19 transmission, high rates of vaccine availability, and expanding categories of vaccine eligibility are positive indicators that, with proper health protocols in place, our school can safely reopen. While future changes to this plan may be required, the reopening framework here is our guide for how this will be done and what you can expect.

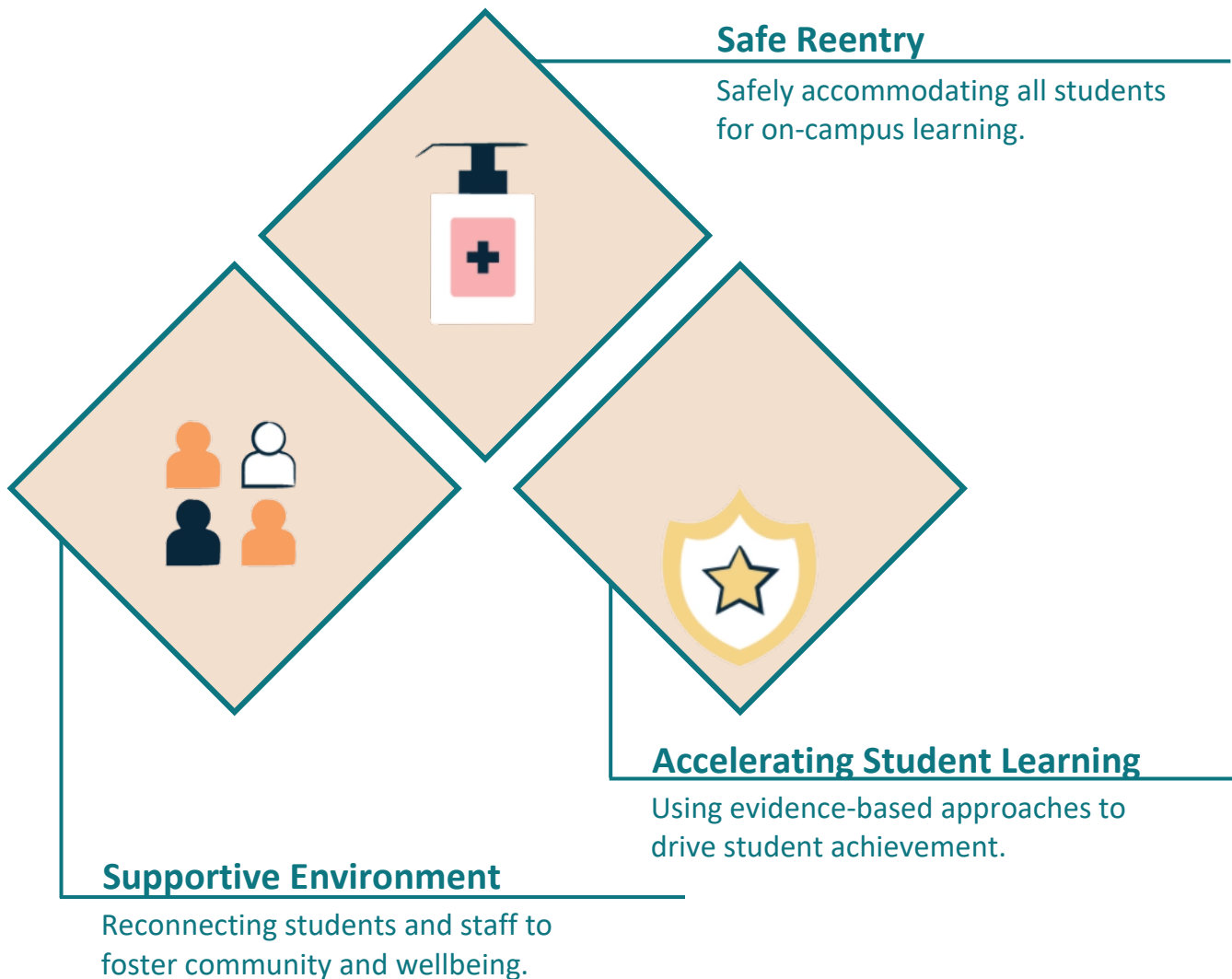
COVID-19 Timeline

- **January 2020**
First confirmed case of COVID-19 detected in U.S.
- **March 2020**
First COVID-19 cases and deaths in South Dakota.
- **March 19, 2020**
Little Wound School closes campus.
- **September 2020**
All Little Wound students transitioned to remote learning.
- **October 2020**
OST introduces lockdown to prevent community spread.
- **November 2020**
Winter sports cancelled.
- **December 2020**
South Dakota has highest COVID-19 mortality rate in U.S.
- **January 2021**
Little Wound maintains remote learning for spring 2021.
- **March 2021**
FDA-approved vaccinations start becoming widely available to communities, including on Pine Ridge. Majority of LWS staff are vaccinated.
- **September 2021**
Little Wound resumes in-person, on-campus instruction.

2

Recovery Framework

As we prepare to welcome our students and staff back to Little Wound School's campus, we have identified three critical focus points. These include ensuring that our campus is safe, that students have the supports they need to reintegrate into school and thrive, and accelerate student learning.



A Safe Reentry

Little Wound School is prepared to serve 100% of students in person beginning with the fall 2021 semester, while maintaining remote options for students who cannot attend in-person for approved medical or other circumstances. We have invested heavily in safe facilities and learned from existing programming how we can best function in our schools safely together.

Our school will follow all tribal, state, and federal guidelines and best practices as we return to on-campus learning. The CDC's K-12 operational strategy presents a pathway for schools to provide in-person instruction safely through consistent use of prevention strategies, including universal and correct use of masks and physical distancing.

Little Wound School's reopening framework and health and safety plans are not only based on this CDC guide, but also consider indicators of community transmission and reflect levels of community risk. For this reason, our school and leadership understands that **changing COVID-19 circumstances may result in this plan's adjustment**. For this reason, Little Wound School has adopted a continuum of phased prevention strategies and responses.

New evidence suggests that many K-12 schools that have strictly implemented prevention strategies have been able to safely open for in-person instruction and remain open.

Little Wound School mitigate opportunities for community spread of COVID-19 by:

- ✓ Requiring all students, staff, and visitors to properly **wear a mask** that covers the nose and mouth.
- ✓ Structuring our classrooms and common areas to ensure **physical distancing** of at least three feet.
- ✓ **Incentivizing vaccination** of staff and students by offering financial compensation for doing so.
- ✓ Implementing **enhanced cleaning** of our classrooms, common areas, and high-touch surfaces and installing hand sanitizing stations throughout our campus.
- ✓ **Monitoring the temperature** of incoming students and staff.
- ✓ Ensuring that staff can **identify** potential symptoms of COVID-19.
- ✓ Expanding access to COVID-19 **testing** by working with tribal and state partners.

B Supportive Environment

Recognizing that students will experience our campus and our community differently after a year apart, Little Wound School will focus on reestablishing connections between our students, staff, families, and spaces.

As our students and staff transition back to campus for instruction and activities, our school is ensuring that everyone has the resources and supports necessary for this change.

Children and youth react to stressful events, like the COVID-19 pandemic, in part on what they see from adults around them. When parents, teachers, and caregivers deal with COVID-19 calmly and confidently, they can help promote the best health of children. Little Wound is committed to creating a stable and supportive environment for everyone.

While students spend part of their day at school, the role of parents and families is central to monitoring and maintaining student mental health. While all people react to stress in different ways, parents and guardians should look for common signs of stress, including excessive irritation; increased worry or sadness; returning to behaviors they have outgrown; use of alcohol, tobacco, or other drugs; avoidance of activities enjoyed in the past; and unexplained headaches or body pain.

Parents should communicate observances of these behaviors to school staff.

Little Wound School will help ensure a joyous return to a supportive environment for everyone by:

- ✓ Ensuring that all students have access to **mental health and counseling** services, provided by school-based counselors as well as Project AWARE therapeutic and cultural counseling staff members.
- ✓ Giving staff members access to counseling and other supports through the employment of a full-time **employee assistance program** director.
- ✓ **Communicating** with parents and families about ways to engage and how parents and families play an active role in supporting the mental health of students.
- ✓ Reinstating cherished school **traditions**, including meet-the-teacher night and circle-up.
- ✓ Continuing our work to become a **trauma-informed school**.

C

Accelerating Academic Growth

Schools play a critical role in promoting equity in education, and Little Wound will accelerate academic growth for students through data-driven analysis, after-school and summer programming, and other investments.

As Little Wound School transitions back to on-campus and in-person instruction, we are reevaluating the way that we provide instruction to students. These focuses will help us accelerate student learning and prevent learning loss.

While Little Wound has heavily invested in technology and other supports for students, we understand that ongoing remote learning may disadvantage some students. Further, continued remote learning may limit student access to key school-supported resources such as school meals programs, special education and related services, counseling, and after-school programs.

The United States Department of Education has released two handbooks for reopening schools, including strategies for accelerating learning. Our school's leadership has referenced these volumes and will use their recommendations as we plan and implement academic programs for students this year.

Our school has closely monitored student performance throughout the pandemic and will use these metrics as benchmarks to ensure equitable access to learning.

Strategies for accelerated learning at Little Wound School will include:

- ✓ High quality **tutoring** aligned to core curriculums offered by certified teachers after school.
- ✓ Offering **summer school** to students during 2021 and 2022 for remedial and enrichment classes.
- ✓ Placing a stronger emphasis on **data analysis at the classroom level** to identify and respond to academic gaps.
- ✓ Continue supporting at-home **technology** by maintaining a one-to-one device program.
- ✓ Providing students with consistent access to **grade-level content** while using data to identify where academic gaps exist and respond as appropriate.
- ✓ Helping **parents and caregivers** understand their students' progress by sharing information on grades, assessment scores, and opportunities for further support.

Little Wound's elementary, middle, and high school will welcome back all students beginning in the fall semester of 2021. We cannot wait to see our students learning on campus in the company of our teachers and other students once again.

Parents and caregivers of Little Wound School students should continue to monitor the school's communication channels for updates about on-campus instruction.

All official updates from Little Wound School about this reopening framework and on-campus learning will be posted the district's website and Facebook page.

Additional questions may be addressed to our school principals, who will work to direct your questions to the proper individual for answers.

Little Wound Elementary School

Principal: Theresa Mendoza

Phone Number: 605-455-6200

Email: theresamendoza@littlewound.us

Little Wound Middle School

Principal: Alvon Little Whiteman

Phone Number: 605-455-6184

Email: alvonlwm@littlewound.us

Little Wound High School

Principal: Sharei Ricketts

Phone Number: 605-455-6233

Email: shareiricketts@littlewound.us

Classes, programs, activities, and other events will take place on campus five days per week. At this time, Little Wound School's schedule for students appears here by school:

Elementary School

Days with on-campus instruction:



Elementary school students will attend classes from 8:25 a.m. to 3:30 p.m.

Middle School

Days with on-campus instruction:



Middle school students will attend classes from 8:25 a.m. to 3:30 p.m.

High School

Days with on-campus instruction:



High school students will attend classes from 8:25 a.m. to 3:30 p.m.

Little Wound Elementary School

Days with On-Campus Instruction:

Monday, Tuesday, Wednesday, Thursday, and Friday

Instructional Hours:

8:25 a.m. to 3:30 p.m. every day.

On-Campus Instruction is Available to:

All elementary school students are invited to resume on-campus, in-person classes.¹ Limited opportunities for remote learning will be available; review page 19 for details.

First Day of School:

August 30, 2021

Point of Contact:

Theresa Mendoza, Principal (605-455-6200)

Lynn Hernandez, FACE Director (605-455-6192)

Registration

Parents and caregivers may register their students either online or in-person for the 2021–2022 school year. Registration dates will be announced on the school’s website and by social media.

Arrivals and Dismissals

Student temperatures will be taken upon building entry. Students will be dismissed in a staggered manner to increase physical distancing.

Recess

When weather permits, recess will take place outdoors and students will be required to wear masks. When there is inclement weather, recesses and breaks will be structured into the school day.

Specials

Specials classes will still be available to students, including Lakota language and culture. Specials teachers may deliver their courses in general education classrooms this year to reduce time spent in common areas.

FACE Program

The FACE program will operate under the same health and safety protocols as the elementary school. Activities with parents and caregivers will be subject to health and safety guidelines as outlined in this report.

504 Plans

The elementary school will administer all Section 504 plans as appropriate.

¹ Students who have COVID-19 symptoms, tested positive for COVID-19 in the past 14 days, or been in extended contact with a symptomatic individual should contact the school nurse, Lindsee Harris (605-455-6213), and not attend school in-person.

Little Wound Middle School

Days with On-Campus Instruction:	<div>M T W Th F</div> Monday, Tuesday, Wednesday, Thursday, and Friday
Instructional Hours:	8:25 a.m. to 3:30 p.m. every day.
On-Campus Instruction is Available to:	All middle school students are invited to resume on-campus, in-person classes. ¹ Limited opportunities for remote learning will be available; review page 19 for details.
First Day of School:	August 30, 2021
Point of Contact:	Alvon Little Whiteman, Principal (605-455-6184)

Registration

Parents and caregivers may register their students either online or in-person for the 2021–2022 school year. Registration dates will be announced on the school’s website and by social media.

Arrivals and Dismissals

Student temperatures will be taken upon building entry. Students will be dismissed in a staggered manner to increase physical distancing.

Class Schedules

Student schedules will include a full suite of classes per day, including math, science, language arts, Lakota language and culture, and other electives.

Classroom Transitions

Student transitions between classrooms will be minimized and staggered to reduce time spent in common areas. Depending on the circumstances, for example, elective teachers may come to students in their classrooms as compared to having students transition to another classroom.

Student Cohorts

To the greatest extent possible, students will attend classes with the same cohort of students. This will reduce student exposure to one another and make contact tracing more accurate in the event of COVID-19 exposure.

504 Plans

The middle school will administer all Section 504 plans as appropriate.

¹ Students who have COVID-19 symptoms, tested positive for COVID-19 in the past 14 days, or been in extended contact with a symptomatic individual should contact the school nurse, Lindsee Harris (605-455-6213), and not attend school in-person.

Little Wound High School

Days with On-Campus Instruction:

Monday, Tuesday, Wednesday, Thursday, and Friday

Instructional Hours:

8:25 a.m. to 3:30 p.m. every day.

On-Campus Instruction is Available to:

All high school students are invited to resume on-campus, in-person classes.¹ Limited opportunities for remote learning will be available; review page 19 for details.

First Day of School:

August 30, 2021

Point of Contact:

Sharei Ricketts, Principal (605-455-6233)

Registration

Parents and caregivers may register their students either online or in-person for the 2021–2022 school year. Registration dates will be announced on the school’s website and by social media.

Arrivals and Dismissals

Student temperatures will be taken upon building entry. Students will be dismissed in a staggered manner to increase physical distancing.

Class Schedules

Student schedules will include a full suite of classes per day, including math, science, language arts, Lakota language and culture, and other electives.

Classroom Transitions

Student transitions between classrooms will be minimized and staggered to reduce time spent in common areas. This may include having some elective teachers travel to other classrooms instead of student transitions in common areas.

Student Cohorts

To the greatest extent possible, students will attend classes with the same cohort of students. This will reduce student exposure to one another and make contact tracing more accurate in the event of COVID-19 exposure.

504 Plans

The high school will administer all Section 504 plans as appropriate.

¹ Students who have COVID-19 symptoms, tested positive for COVID-19 in the past 14 days, or been in extended contact with a symptomatic individual should contact the school nurse, Lindsee Harris (605-455-6213), and not attend school in-person.

COVID-19 has not altered Little Wound School's legal responsibility to serve well our students with exceptional needs. We remain committed to ensuring that 100% of our students have access to the resources and supports that are necessary to thrive in each student's least restrictive environment and in the world outside our school's grounds

The ECP program will operate in a way that follows all CDC best-practices for ensuring health and safety as outlined in this reopening framework, but this will not impact the program's ability to meet the unique needs of each student, and provide the services that students need to access high quality instructional content.

During this time of transition, it is essential that parents and caregivers participate as members of students' IEP teams and attend all relevant meetings. Little Wound School will continue accommodating the needs of parents, including by permitting remote parent attendance at IEP meetings. It is essential that all parents maintain consistent communication with the ECP department.

Additional questions may be directed to Little Wound's director of special education.

Name: Norma Brown Bull

Phone Number: 605-455-6150

Email: normabrownbull@littlewound.us

Little Wound's commitment to an equitable education environment for all students includes:

- ✓ Uninterrupted work to ensure that all IDEA-eligible students have up-to-date **individual education plans** crafted by a knowledgeable team of staff in cooperation with the student and the student's parent or legal guardian.
- ✓ Equal access to opportunities that **accelerate student learning**, including access to technology and after-school tutoring programs.
- ✓ Staff use of **student-level data** to guide instruction, and communication of student performance to parents and caregivers.
- ✓ **Consistent progress monitoring** to ensure that all students with an IEP maintain the skills necessary to continue receiving a free and appropriate public education (FAPE).
- ✓ Continued investment in **extended school year** (ESY) and other programs designed to ensure supplemental supports for all students that drive student learning and development.

Fall sports and extracurricular activities resume in fall 2021.

Little Wound School will resume athletics and extracurricular activities beginning in fall 2021. These include:

- ✓ Cross Country (MS & HS)
- ✓ Football (MS & HS)
- ✓ Volleyball (MS & HS)
- ✓ Oral Interpretation (HS only)
- ✓ Handgames (MS & HS)
- ✓ Boy's Golf (HS + 7/8)

Little Wound School is currently planning to resume all sports and extracurricular activities for the 2021–2022 school year, but may adjust its plan based on COVID-19 case rates in the community.

Little Wound School will follow guidance and requirements published by the SDHSAA, [accessible online here](#).

How to contact the LWS athletic director:

Name: Keith Ferguson

Phone Number: 605-455-6226

Email: keithferguson@littlewound.us

Little Wound School will implement a number of protocols to enhance the safety of all participants. These may include, but are not limited to:

- ✓ **Taking attendance** at all practices, games, meets, events, or other gatherings so that **contact tracing** may take place in the event that an individual present was infected with, or exposed to, COVID-19.
- ✓ Taking **student temperatures** at the time that athletic or extracurricular activities begin.
- ✓ To the greatest extent possible, enforcing **physical distancing**.
- ✓ For indoor events and activities, requiring the **proper use of masks**.
- ✓ **Limiting the occupancy** of the gymnasium and football field bleachers to ensure that any spectators are able to maintain proper physical distancing.
- ✓ **Requiring spectators to follow all health and safety guidelines** established by Little Wound School and in accordance with CDC recommendations.

Transportation

The CDC has published guidance for schools about maintaining student safety on school busses in a way to minimize the potential for community spread of COVID-19. Little Wound School seeks to follow these guidelines, which include:

- ✓ **Adjusting seating patterns** on busses to maintain appropriate physical distancing.
- ✓ Requiring that all students and adults on the bus are properly wearing **face masks**.
- ✓ Performing a **temperature check** for all individuals entering the bus at the time of boarding.
- ✓ Enhancing bus **sanitation** by performing an interior cleaning after each trip.
- ✓ Having an **adult bus monitor** on each school bus to enforce compliance with COVID-19 health and safety standards among students.
- ✓ When weather permits, ensuring that some vehicle windows are rolled down to **increase airflow**.

Contact Tracing

Little Wound School will make all reasonable efforts to collaborate with tribal health authorities, to the extent allowable by applicable law, to confidentially provide information about people diagnosed with or exposed to COVID-19. Students, teachers, and staff with positive test results will be asked to isolate, and close contacts to quarantine.

At different times throughout the day, lists of students and adults in the physical presence of one another will be recorded and maintained for two weeks. This includes on busses or other school vehicles, in classrooms, at athletic or extracurricular events, and other instances where close contact occurs.

Should a positive case of COVID-19 be recorded within the Little Wound School community, parents will be notified as appropriate and be advised that the individual should follow CDC guidance for isolation and quarantine.

Prompt identification, quarantine, and monitoring of those contacts exposed to COVID-19 can effectively break the chain of transmission and prevent further spread of the virus.

Off-campus food deliveries to end with resumption of on-campus instruction. On-campus food service will be modified to ensure safety.

On-campus food service operations will resume for all students attending classes in person. Consequently, there will not be any home deliveries of prepared meals for students learning remotely.

At this time, the CDC has published additional guidance to limit the potential spread of COVID-19 during meal service at schools. Little Wound School intends to follow this guidance to help ensure that our students remain safe throughout the school day. As a result, food service operations at Little Wound will look different than it did before campus closed for the 2020–2021 school year. Regardless of delivery method, Little Wound’s food service operation will:

- ✓ Continue serving meals that meet all state and federal health and nutrition guidelines.
- ✓ Serve meals in a way that meets COVID-19 safety precautions, including the cessation of any self-serve food or drink options like food bars, salad or condiment bars, or drink or coffee stations.

Breakfast

Pre-packaged breakfasts will be placed at the entrance of the elementary school, middle school, and high school. Students may pick up a prepared at the time they enter the school building. Students will then proceed to their classroom to eat their meal and await the start of the school day.

Lunch

Little Wound School is currently preparing two plans to manage lunchtime food service, which may change based on the rate of infection, rate of vaccination, and cafeteria limitations. Both plans are designed to maintain appropriate student physical distancing. Lunch service will likely either be:

- 1 **Classroom Delivery**
To ensure adequate physical distancing, school staff may deliver prepared meals to students at each classroom. This minimizes time spent in common areas and reduces the number of unmasked individuals eating in the cafeteria.
- 2 **Staggered Lunches**
Little Wound School may resume in-cafeteria meal service, but the number of individuals in the cafeteria at any time will be reduced. Additional cleaning will take place between lunches.

Opportunities for remote learning will continue being offered under limited circumstances.

Despite careful planning and consistent implementation of prevention strategies, some situations may lead school officials to consider temporarily closing our campus or parts of our school (e.g., a class, cohort, or grade level) to in-person instruction. Furthermore, Little Wound School may offer opportunities for students to complete all or some of their coursework remotely under separate, approved circumstances.

Regardless of the mode of instruction, Little Wound School remains committed to ensuring that all students have access to a high-quality education that is grounded in Lakota culture. Our school will support students who continue receiving full-time or part-time instruction remotely. Supports for remote students may include:

- ✓ Providing students with **technology** to access and complete coursework from home.
- ✓ Holding all students to the same **standards of academic excellence**.
- ✓ Ensuring that all students retain access to mental and behavioral health services, including **counseling**.

At this time, Little Wound School is determining the specific circumstances under which students may continue or be required to complete coursework remotely. These may include:

- ✓ **Quarantine and Isolation**
A student who has been exposed to COVID-19, is showing symptoms associated with COVID-19, or has tested positive for COVID-19 will not be permitted on campus, but may temporarily receive course content to complete at home.
- ✓ **Medical Exemptions**
A certified medical need to learn remotely due to the COVID-19 pandemic will be equipped to work from home and receive relevant supports and services. Any student meeting this requirement will have a Section 504 plan developed that includes reasonable accommodations and outlines performance and academic expectations.
- ✓ **Alternative and Extension Schools**
Before COVID-19, middle and high school students could complete their coursework in a flexible manner, including—in some cases—online. Little Wound will continue operating these programs for students who may benefit from participation.

9

Phased Prevention and Flexibility

Little Wound School is consistently monitoring local COVID-19 community transmission rates for Oglala Lakota County. Our school's reopening includes four phases of prevention strategies considering, in part, this information.

Indicator:	Low Transmission: Blue	Moderate Transmission: Yellow	Substantial Transmission: Orange	High Transmission: Red
Total new cases per 100,000 persons in the past 7 days.	0–9	10–49	50–99	100+

On a weekly basis, Little Wound School will determine its phase of reopening based in part on this data and at the discretion of the school's elected leadership. The rate of community transmission is published by the CDC on its website.

At the time of this reopening framework's publication, **Oglala Lakota County's community transmission is less than 10 new cases per 100,000 residents**, meaning that we are operating in:

Low Transmission:
Blue

In collaboration with local health authorities, decisions about on-campus and in-person activities will combine information about community levels of transmission with school-specific factors, such as implementation of prevention strategies and the number of cases among students, teachers, and staff.

Little Wound School is committed to ensuring that our students and staff remain safe and healthy. **Our school's leadership team, including the school board, retain ultimate decision-making authority about the proper response.**

Multiple COVID-19 variants are circulating globally, including several that have been detected in the United States. Some variants spread more easily and quickly than other variants, which could lead to more cases of COVID-19. As more information becomes available, prevention strategies and school guidance may be adjusted in response to changing circumstances. Any changes will be communicated to parents and guardians.

Little Wound School's phased prevention strategies are currently based on practices recommended by the CDC. Based on the phase of prevention,

Low Transmission: Blue	Moderate Transmission: Yellow	Substantial Transmission: Orange	High Transmission: Red
Consistent Prevention Strategies: <ul style="list-style-type: none">• Universal and correct use of masks• Physical distancing• Handwashing and respiratory etiquette• Cleaning and maintaining healthy facilities• Contact tracing in combination with isolation and quarantine			
Maintain physical distancing of at least three feet between students in classrooms.		Maintain physical distancing of at least three feet between students in classrooms and six feet when possible. Student cohorts may be utilized to maximize on-campus instruction and programming.	
Indoor and outdoor sports to continue with physical distancing of six feet to the greatest extent possible.		Little Wound School Board to consider additional health and safety protocols and precautions pertaining to sports and activities.	
On-campus student movement to be limited to ensure physical distancing in common areas, and student transitions will be staggered.		Student transitions between classrooms and spaces to be limited to ensure appropriate distancing.	Student transitions between classrooms and spaces to be curtailed to the greatest extent possible.
On-campus instruction and extracurricular activities will take place on campus.		Little Wound School will consider specific details about COVID-19 to determine whether full on-campus instruction will take place, whether a cohort model will be used, or if instruction will be conducted remotely and online.	

This chart is designed to give a sense of what phased precautions look like within a school environment and is based on CDC guidance. However, Little Wound School will implement precautions based on local data and school- and community-needs and these phased prevention strategies may shift as appropriate.

Note: The contents of this reopening framework, including information about phased prevention strategies, are subject to change at any time without notice. Little Wound School will consistently monitor the changing status of COVID-19 in our community and make decisions in the best interest of the district, its staff, and its students.

References & Resources

The following links and resources may be valuable sources for information about COVID-19 and other related health and safety protocols.

1. The U.S. Centers for Disease Control and Prevention's (CDC) "Operational Strategy for K–12 Schools through Phased Prevention." [Click here](#).
2. The U.S. Department of Education's "COVID-19 Handbook." [Click here](#) for volume one and [click here](#) for volume two.
3. The U.S. Centers for Disease Control and Prevention's (CDC) "COVID Data Tracker," including by county-level view. [Click here](#).
4. The South Dakota Department of Health's "COVID-19 Vaccination Information" website. [Click here](#). To find a vaccination site, [click here](#).
5. The Oglala Lakota Nation's official website. [Click here](#).