

1. SCHOOL SCENARIOS

How to handle exposure to COVID-19

Scenario 1a. A healthy student or staff member has been **EXPOSED** to a person with confirmed COVID-19 **WITHIN THEIR HOUSEHOLD**

SCHOOL

EXPOSED STUDENT

EXPOSED STAFF MEMBER

HOUSEHOLD MEMBERS

Including siblings if the ill person is a student

Send student home if not already

Record the date school became aware and excluded the student

Quarantine at home for **14 days after date of last exposure** to the COVID-19 positive contact. If additional household members become ill with COVID-19, or if the exposed person cannot avoid continued close contact, the length of quarantine may be >14 days.

If exposed student becomes ill, see **Scenario 2b.**

If asymptomatic, teacher may work with face mask on at all times. Teacher should quarantine when not at work

If exposed teacher becomes ill, see **Scenario 2b.**

Siblings should also quarantine at home for **14 days after date of last exposure** to the COVID-19 positive contact. If additional household members become ill with COVID-19, or if the exposed person cannot avoid continued close contact, the length of quarantine may be >14 days.

If exposed student becomes ill, see **Scenario 2b.**

Scenario 1b. A healthy student or staff member has been **EXPOSED** to a person with confirmed COVID-19 **OUTSIDE OF THEIR HOUSEHOLD**

SCHOOL

EXPOSED STUDENT

EXPOSED STAFF MEMBER

HOUSEHOLD MEMBERS

Including siblings if the ill person is a student

Send student home if not already home

Record the date school became aware and excluded the student

School will monitor the teacher daily for symptoms

Quarantine at home for **14 days after date of last exposure** to the COVID-19 positive contact.

If exposed student becomes ill, see **Scenario 2b.**

If asymptomatic, teacher may work with face mask on at all times. Teacher should quarantine when not at work

If exposed teacher becomes ill, see **Scenario 2b.**

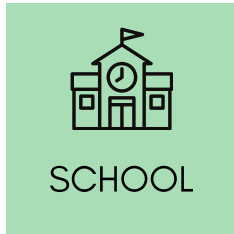
If siblings were **not exposed** to the person with confirmed COVID-19: they may continue school attendance as long as exposed sibling remains healthy

2. SCHOOL SCENARIOS



How to handle COVID-19 illness

Scenario 2a. A student or staff member **BECOMES ILL** with COVID-19 symptoms*. Ill person has **NO KNOWN COVID-19 CONTACTS** in past 14 days.



Including siblings if the ill person is a student



Isolate student or staff member and send them home as soon as possible

Seek testing/consultation from health care provider via phone, virtual, or in person visit per healthcare provider's discretion

All household members may continue school attendance while ill student is evaluated for COVID-19 infection.

Record the date school became aware and excluded the individual

If the ill person has a **negative** COVID-19 test, see Scenario 3b

If the ill person **does not get tested** COVID-19 test, see Scenario 4b

If the ill person has a **positive** COVID-19 test, see Scenario 5

Note is required from a healthcare provider before returning to school

Scenario 2b. A student or staff member **BECOMES ILL** with COVID-19 symptoms* and **WAS IN CLOSE CONTACT** with someone with COVID-19 in the past 14 days.



Including siblings if the ill person is a student



Isolate ill person and send them home. The ill person is a "probable case" due to recent contact with a COVID-19 case

Seek testing/consultation from health care provider via phone, virtual, or in person visit per health care provider's discretion

Any household members should be sent home while ill student is evaluated for COVID-19

Record the symptoms reported or observed and the date school became aware and excluded the individual

If the ill person has a **negative** COVID-19 test, see Scenario 3b

If the ill person **does not get tested** COVID-19 test, see Scenario 4b

If the ill person has a **positive** COVID-19 test, see Scenario 5

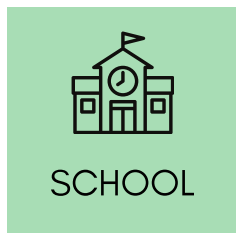
Note is required from a health care provider before returning to school

** Primary symptoms: cough, fever (greater than 100.4 F) or chills, shortness of breath, difficulty breathing, loss of taste or smell*

3. SCHOOL SCENARIOS

How to handle a **NEGATIVE COVID-19** viral test

Scenario 3a. An ill symptomatic student or staff member has a **NEGATIVE** COVID-19 test and has **NO KNOWN COVID-19 CONTACTS** in past 14 days.



Including siblings if the ill person is a student



Send individual home (if not home already)

Isolate at home until 24 hours after fever is resolved, without use of fever-reducing medicine **AND** symptoms are improving

Healthy, asymptomatic household members may continue school attendance.

Note is required from a health care provider before returning to school

3. SCHOOL SCENARIOS



How to handle a **NEGATIVE COVID-19** viral test

Scenario 3b. An ill student or staff member has a **NEGATIVE** COVID-19 test. Ill person **HAS HAD CLOSE CONTACT** with someone who had COVID-19 in the past 14 days



4. SCHOOL SCENARIOS

How to handle when a person does not get tested

Scenario 4a. An ill student or staff member **DOES NOT GET TESTED** with a COVID-19 viral test. Ill person has **NO KNOWN COVID-19 CONTACTS** in the past 14 days



*Including
siblings if the ill
person is a
student*



Send individual home (if not home already).

Note is required from a health care provider before returning to school

If the ill person has respiratory symptoms and does not see consultation with a health care provider, isolate at home for 10 days after symptoms first appeared **AND** until 24 hours after fever is resolved without using medication **AND** symptoms are improving

If no alternative diagnosis is identified as the cause of the person's illness, the ill person should isolate at home for 10 days after symptoms first appeared **AND** until 24 hours after fever is resolved, without the used of medication, **AND** symptoms are improving

If a clear alternative non-respiratory diagnosis is identified by a health care provider as the cause of the person's illness, then usual disease-specific return-to-school guidance should be followed **AND** person should be fever-free for 24 hours without using medication

A health care provider note is required for return to school prior to completing 10 days of isolation, ensuring that the person is no longer contagious. Consultation with the provider can be via phone, virtual or in person, per the provider's discretion

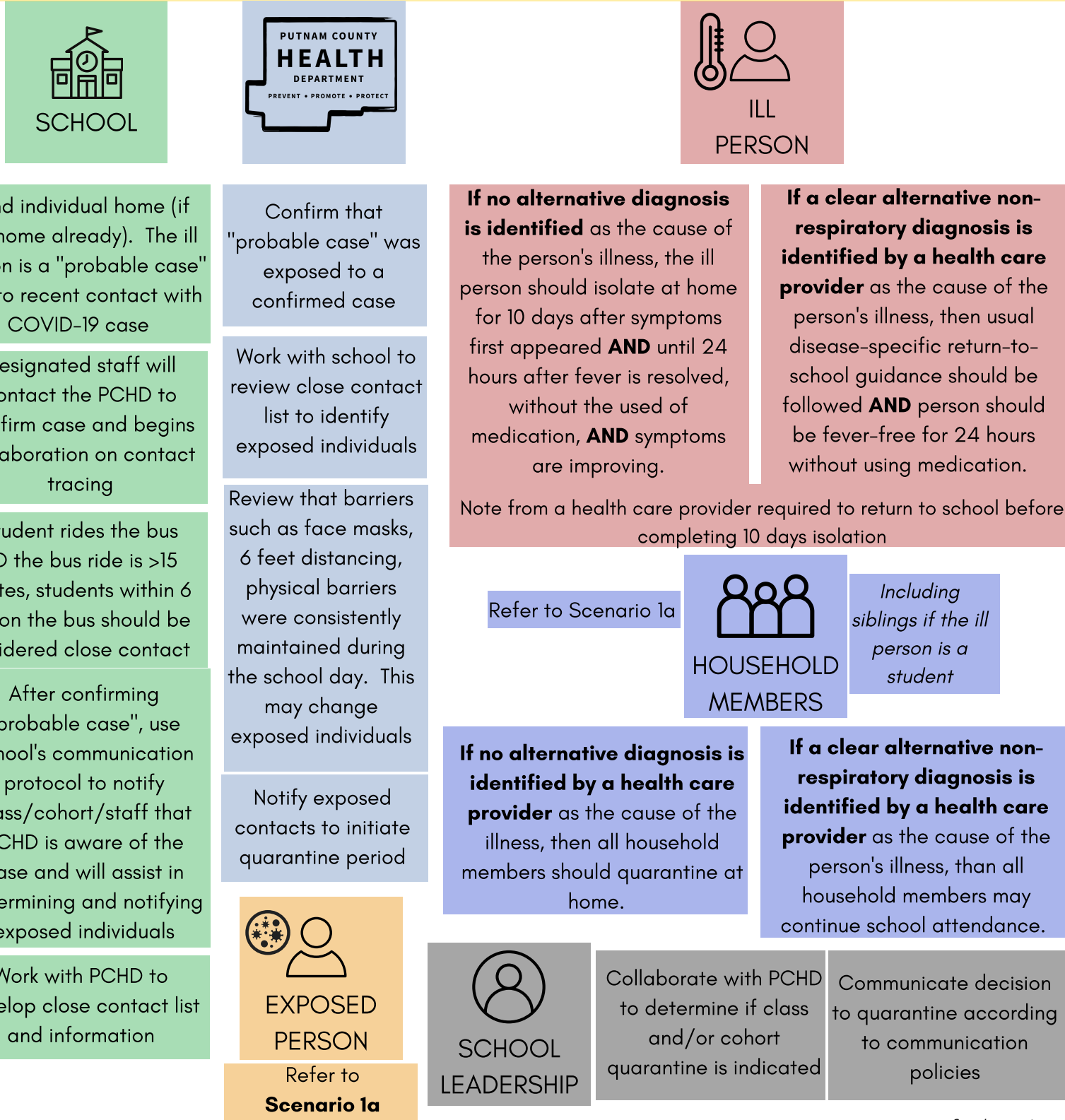
If no alternative diagnosis is identified by a health care provider as the cause of the illness, then all household members should quarantine at home. Refer to **Scenario 1a**.

If a clear alternative non-respiratory diagnosis is identified by a health care provider as the cause of the person's illness, then all household members may continue school attendance.

4. SCHOOL SCENARIOS

How to handle when a person does not get tested

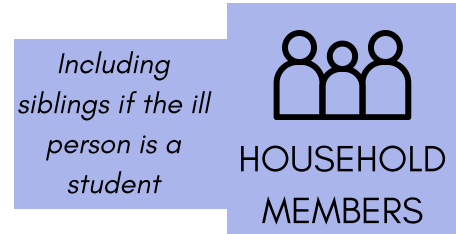
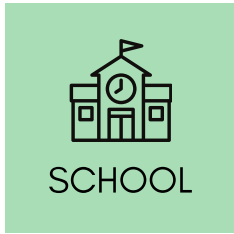
Scenario 4b. An ill student or staff member **DOES NOT GET TESTED** with a COVID-19 viral test and a clear alternative non-respiratory diagnosis **IS NOT** identified. Ill person **WAS IN CLOSE CONTACT** with someone who had COVID-19 in the past 14 days.



4. SCHOOL SCENARIOS

How to handle when a person does not get tested

Scenario 4c. An ill student or staff member **DOES NOT GET TESTED** with a COVID-19 viral test and a clear non-respiratory diagnosis **IS IDENTIFIED** as a cause of illness. Ill person **WAS IN CLOSE CONTACT** with someone who had COVID-19 in the past 14 days.



Send individual home (if not home already). The ill person is not considered "probable case" due to alternative diagnosis

If a clear alternative non-respiratory diagnosis is identified by a health care provider as the cause of the person's illness, then usual disease-specific return-to-school guidance should be followed. However, this student also requires quarantine *at home for 14 days after date of last exposure* to the COVID-19 positive contact (refer to **Scenario 1a**) **AND** meet usual return-to-school guidance for diagnosis.

If a clear alternative non-respiratory diagnosis is identified by a health care provider as the cause of the person's illness, then all household members may continue school attendance, as long as the family member develops NO COVID-19 symptoms during quarantine.

If person develops new COVID-19 symptoms during quarantine, refer to **Scenario 2b**

5. SCHOOL SCENARIOS

How to handle a positive COVID-19 viral test



Scenario 5. One student or staff member has a **POSITIVE** COVID-19 viral test



Send individual home (if not home already).

Designated staff will contact the PCHD to confirm case and begins collaboration on contact tracing

If student rides the bus AND the bus ride is >15 minutes, students within 6 feet on the bus should be considered close contact

After confirming positive case, use school's communication protocol to notify class/cohort/staff that PCHD is aware of the case and will assist in determining and notifying exposed individuals

Work with PCHD to develop close contact list and information

Work with school to review close contact list to identify exposed individuals

Review that barriers such as face masks, 6 feet distancing, physical barriers were consistently maintained during the school day. This may change exposed individuals

Notify exposed contacts to initiate quarantine period

Isolate at home for 10 days after symptoms first appeared **AND** until 24 hours after fever is resolved, without using medication **AND** symptoms are improving

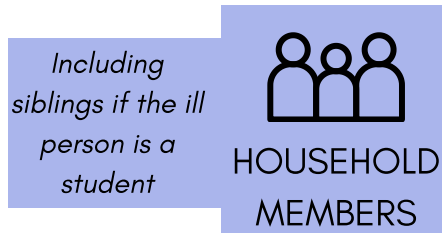
A negative viral COVID-19 test is **NOT** needed for return to school

Refer to **Scenario 1a**



Communicate decision to quarantine according to communication policies

Collaborate with PCHD to determine if class and/or cohort quarantine is indicated

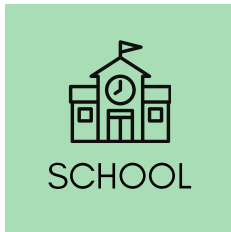


All household members must quarantine for 14 days after their last exposure to the ill person. See **Scenario 1a**

6. SCHOOL SCENARIOS

How to handle multiple positive COVID-19 viral tests

Scenario 6. Two or more people **within the same class** have a **POSITIVE** COVID-19 viral test **within 14 days of each other**



Send students/staff home, in not already isolated

Designated staff will contact the PCHD to confirm case and begins collaboration on contact tracing

If student rides the bus **AND** the bus ride is >15 minutes, students within 6 feet on the bus should be considered close contact

After confirming positive case, use school's communication protocol to notify class/cohort/staff that PCHD is aware of the case and will assist in determining and notifying exposed individuals

Work with PCHD to develop close contact list and information

If PCHD determines an entire class requires quarantine, school will follow their communication protocol

Work with school to review close contact list to identify exposed individuals

Review that barriers such as face masks, 6 feet distancing, physical barriers were consistently maintained during the school day. This may change exposed individuals

Notify exposed contacts to initiate quarantine period

Isolate at home for 10 days after symptoms first appeared **AND** until 24 hours after fever is resolved, without using medication **AND** symptoms are improving

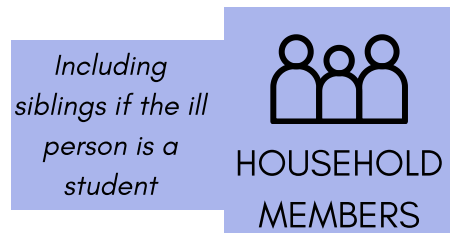
A negative viral COVID-19 test is **NOT** needed for return to school

Refer to **Scenario 1a**



Communicate decision to quarantine according to communication policies

Collaborate with PCHD to determine if class and/or cohort quarantine is indicated



All household members must quarantine *for 14 days after their last exposure to the ill person.* See **Scenario 1a**

7. SCHOOL SCENARIOS

How to handle multiple positive COVID-19 viral tests

Scenario 7. Two or more people in **different classes** have a **POSITIVE** COVID-19 viral test **within 14 days of each other**



Send students/staff home, in not already isolated

Designated staff will contact the PCHD to confirm case and begins collaboration on contact tracing

If student rides the bus **AND** the bus ride is >15 minutes, students within 6 feet on the bus should be considered close contact

After confirming positive case, use school's communication protocol to notify class/cohort/staff that PCHD is aware of the case and will assist in determining and notifying exposed individuals

Work with PCHD to develop close contact list and information

If PCHD determines an entire class requires quarantine, school will follow their communication protocol

Work with school to review close contact list to identify exposed individuals

Review that barriers such as face masks, 6 feet distancing, physical barriers were consistently maintained during the school day. This may change exposed individuals

Notify exposed contacts to initiate quarantine period

If cases are unrelated, these may be sporadic cases. Refer to **Scenario 5**

If cases are unrelated but have definite exposure to each other during the school day, this may be due to transmission during groups outside of class

Recommend to quarantine if specific groups can be identified. If specific overlapping groups cannot be identified, recommend quarantine of all affected cohorts

Isolate at home for 10 days after symptoms first appeared **AND** until 24 hours after fever is resolved, without using medication **AND** symptoms are improving

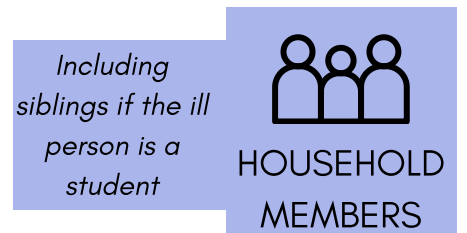
A negative viral COVID-19 test is **NOT** needed for return to school

Refer to **Scenario 1a**



Communicate decision to quarantine according to communication policies

Collaborate with PCHD to determine if class and/or cohort quarantine is indicated



Including siblings if the ill person is a student

All household members must quarantine *for 14 days after their last exposure to the ill person.* See **Scenario 1a**