

Maryland Elementary School

Options

Perkins&Will



Moody Nolan



Programmatic Need: Maryland Elementary School

- Some classroom sizes are too small for current educational modalities
- Some classroom proportions are challenging and yield less daylight
- **Some special education spaces located in lower level**
- Lower-level classrooms have limited daylight and views
- No intentionally designed collaborative spaces
- Some student support spaces are not ADA compliant
- Some student support spaces have no daylight
- Many restrooms are not ADA compliant
- Recently renovated media center
- Many rooms have older, less flexible furniture
- **Many offices are non-contiguous and would benefit from consolidation and secure vestibule**
- Corridors are narrow and doors swing into them
- **Kitchen/servery undersized**



Existing

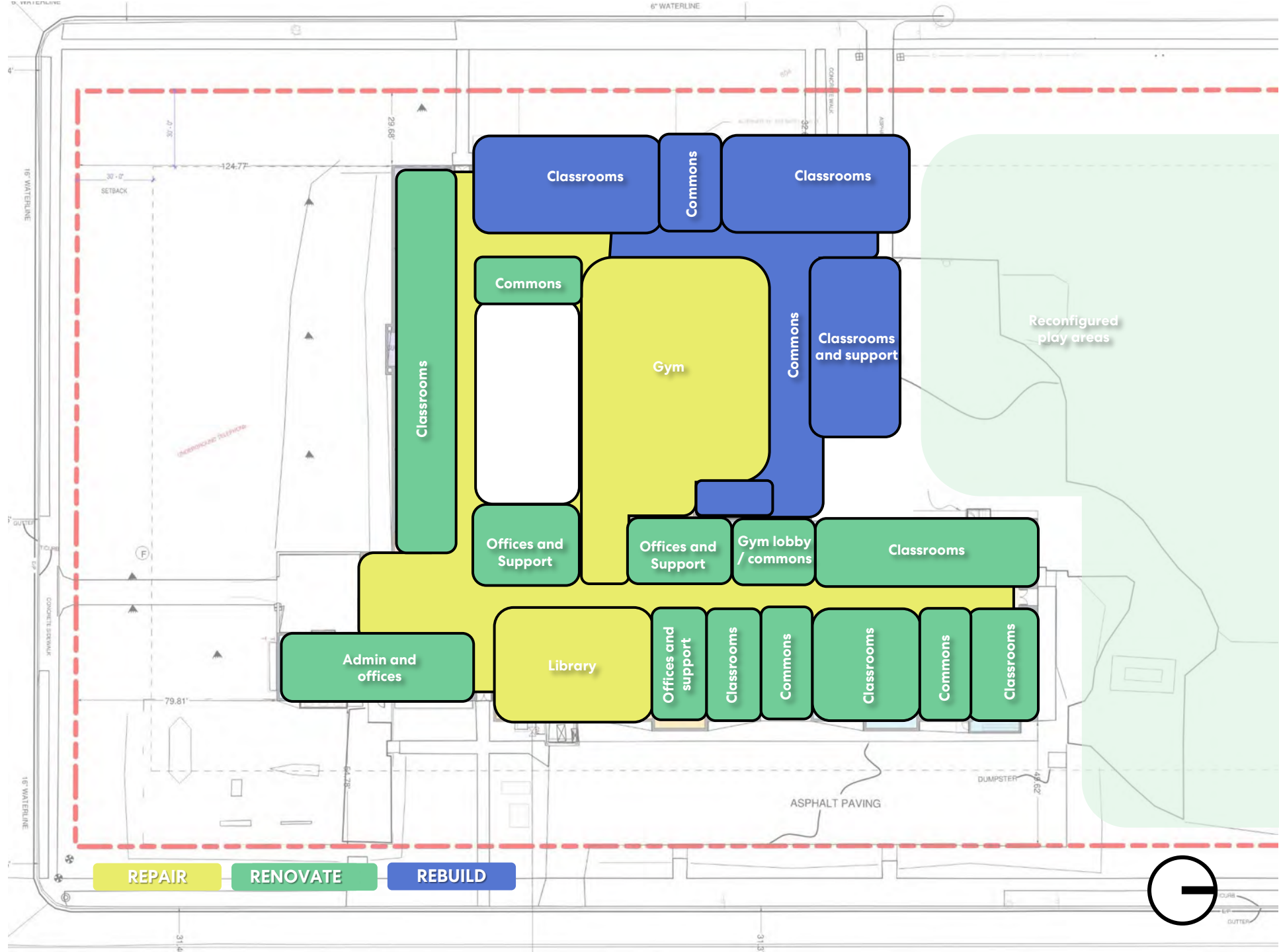


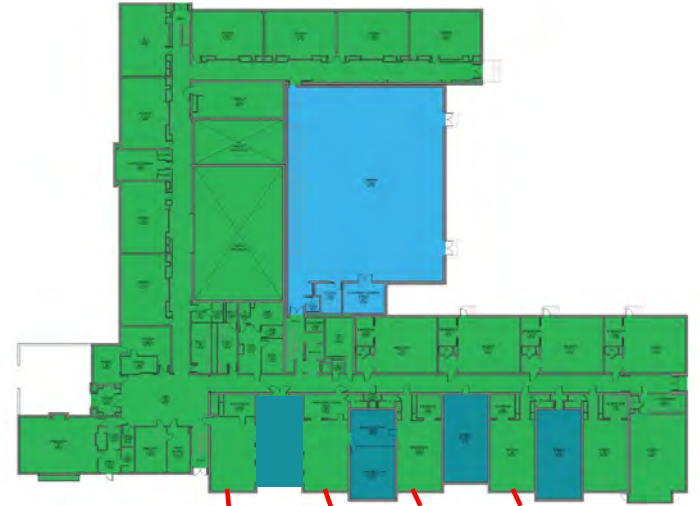
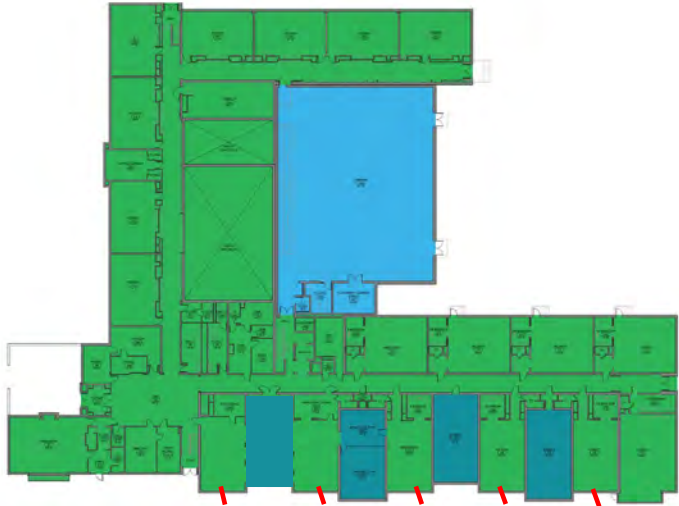
Option A Demolition



Option A \$

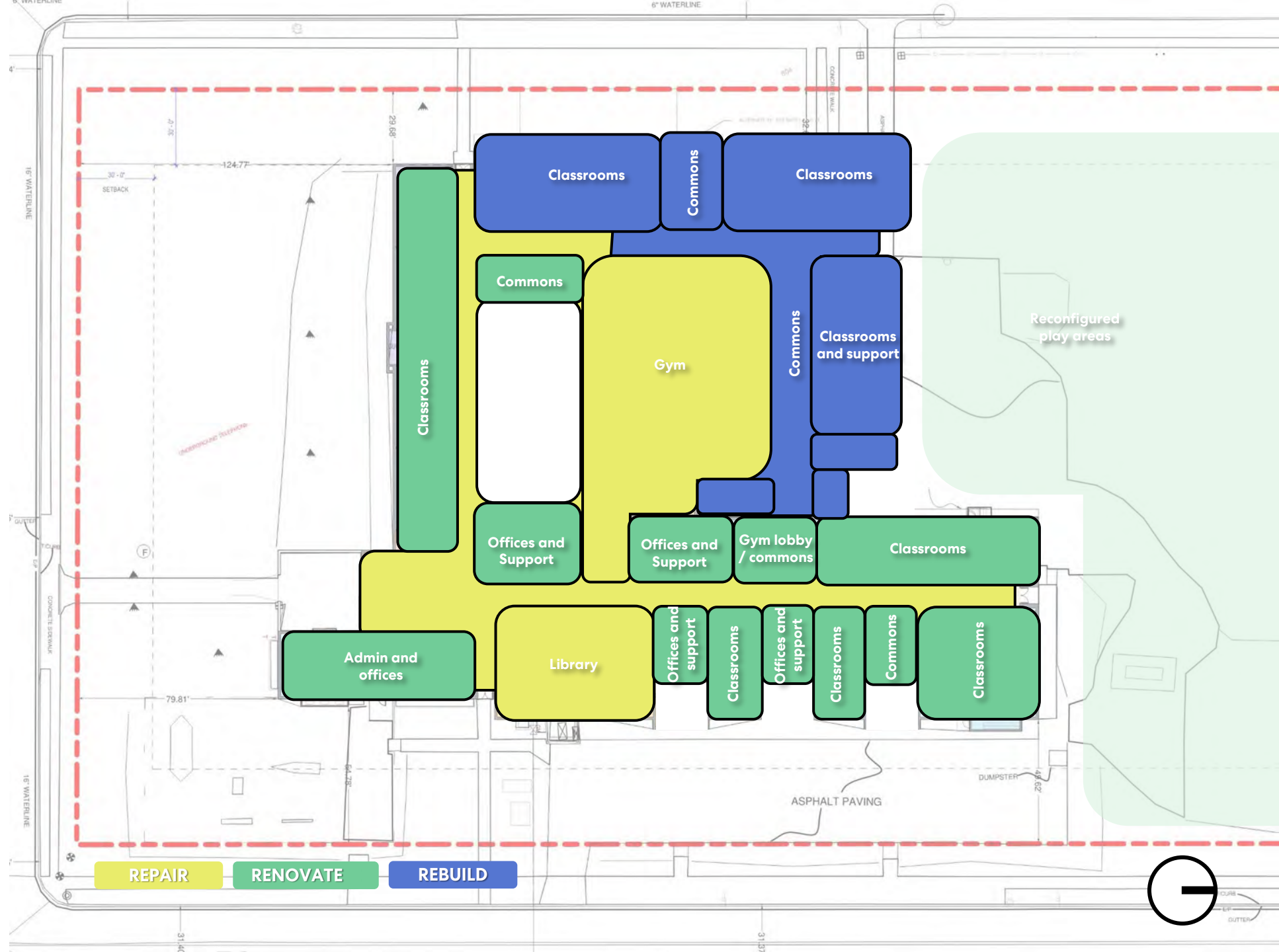
- Rebuild: 1 story ES addition
- Right sized classrooms grouped by grade level
- Right sized support spaces (admin, offices, specials, arts, athletics)
- Improved accessibility, circulation and adjacencies (admin, offices, intervention (cross cat on main level), gym lobby, grade levels, restrooms)
- Natural light for all classrooms
- Additional space for improved kitchen/servery





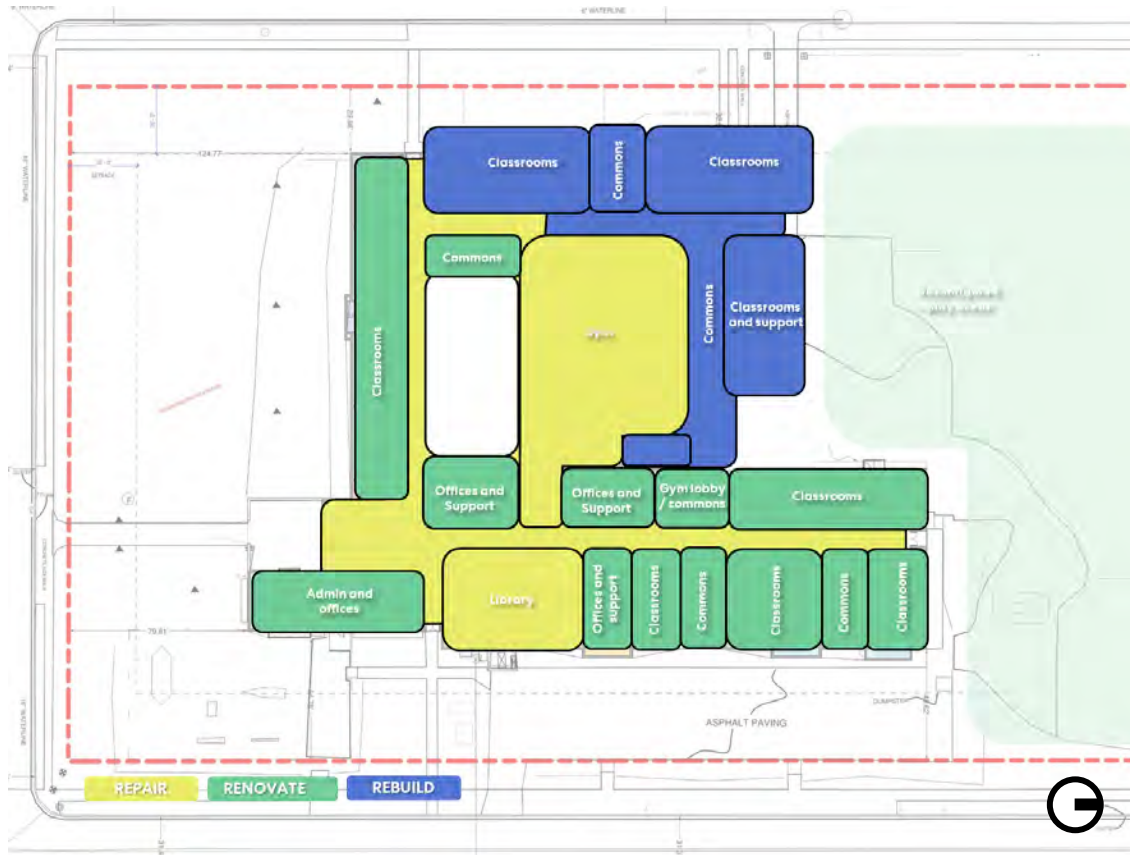
Option B \$\$

- Rebuild: 1 story ES addition
- Right sized classrooms grouped by grade level
- Right sized support spaces (admin, offices, specials, arts, athletics)
- Improved accessibility, circulation and adjacencies (admin, offices, intervention (all on main level), gym lobby, grade levels, restrooms)
- Improved natural light for all classrooms
- Additional space for improved kitchen/servery

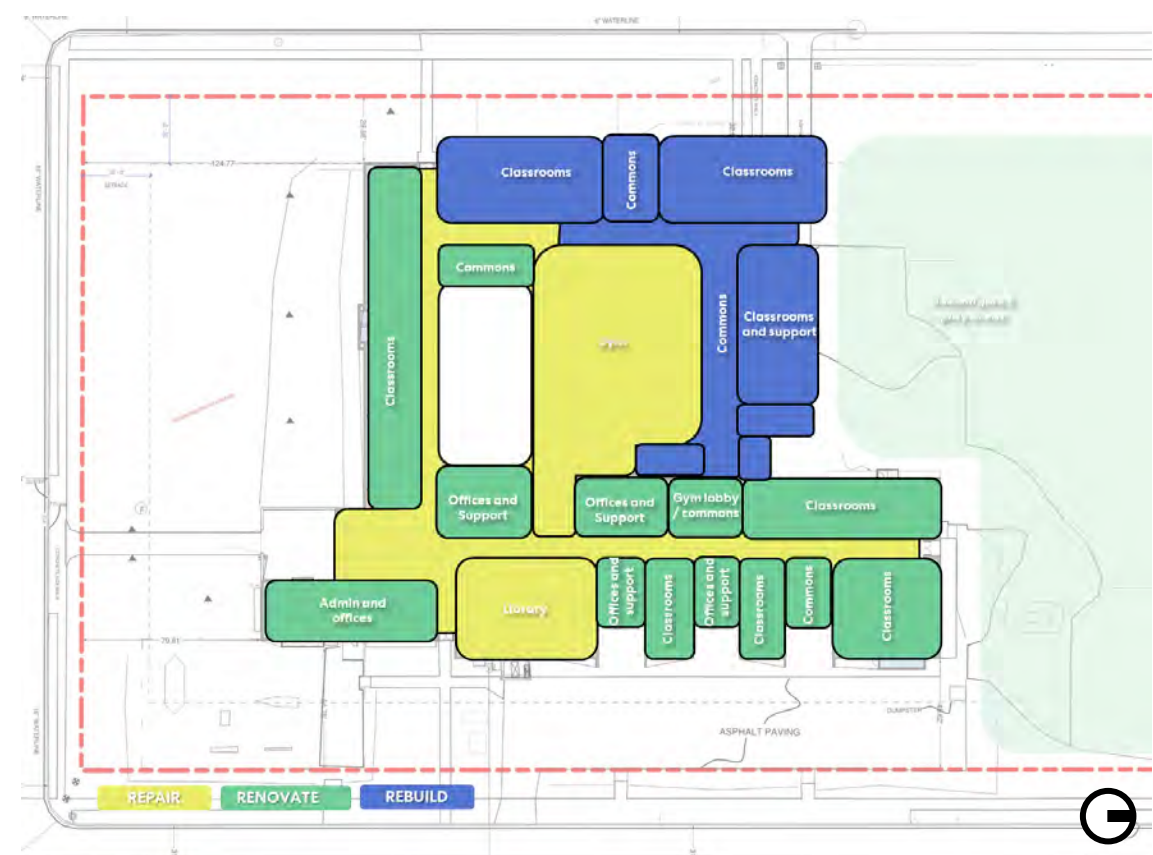


Option Comparison

Option A



Option B



Building Team Summary Comments – Maryland Elementary School

- Like the circulation around the gym for ease of flow and wider entry to the gym
 - Like the larger classrooms, grade level groupings and commons areas
 - Like IS and Gen Ed classrooms on main level
 - Like secure vestibule and administrative offices at main entry
 - Like that the addition doesn't take away much outdoor space
 - Option A: Like how it is practical and functional
-
- Explore adding along the front of the building along Maryland
 - Explore how playgrounds and new classrooms interface (possibly distracting if too close)
 - Explore more daylight to lower-level spaces and internal spaces
 - Explore improved space for band/strings – make the stage flexible space
 - Explore parking improvements / one way circulation options / drop off loop in front
 - Explore zoning the community use components for flexibility
 - Explore spreading out the support spaces so not just on one side
 - Option B: Explore adding space (pushing out) not demolishing to get the sawtooth windows