

Montrose Elementary School

Options

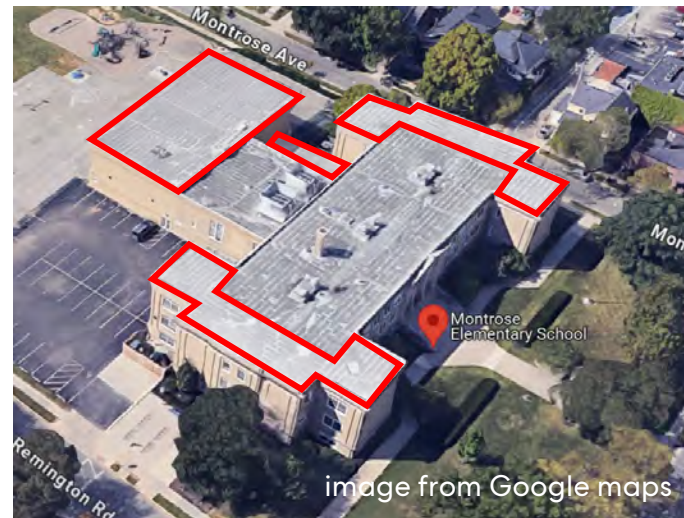
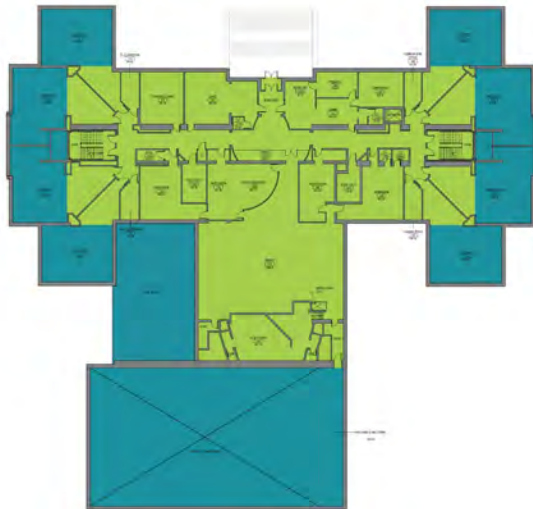
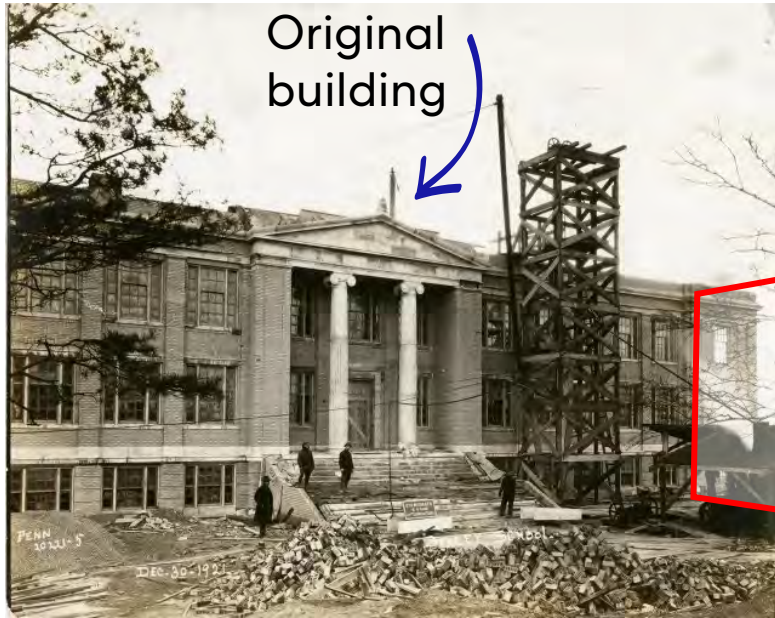


Programmatic Need: Montrose Elementary School

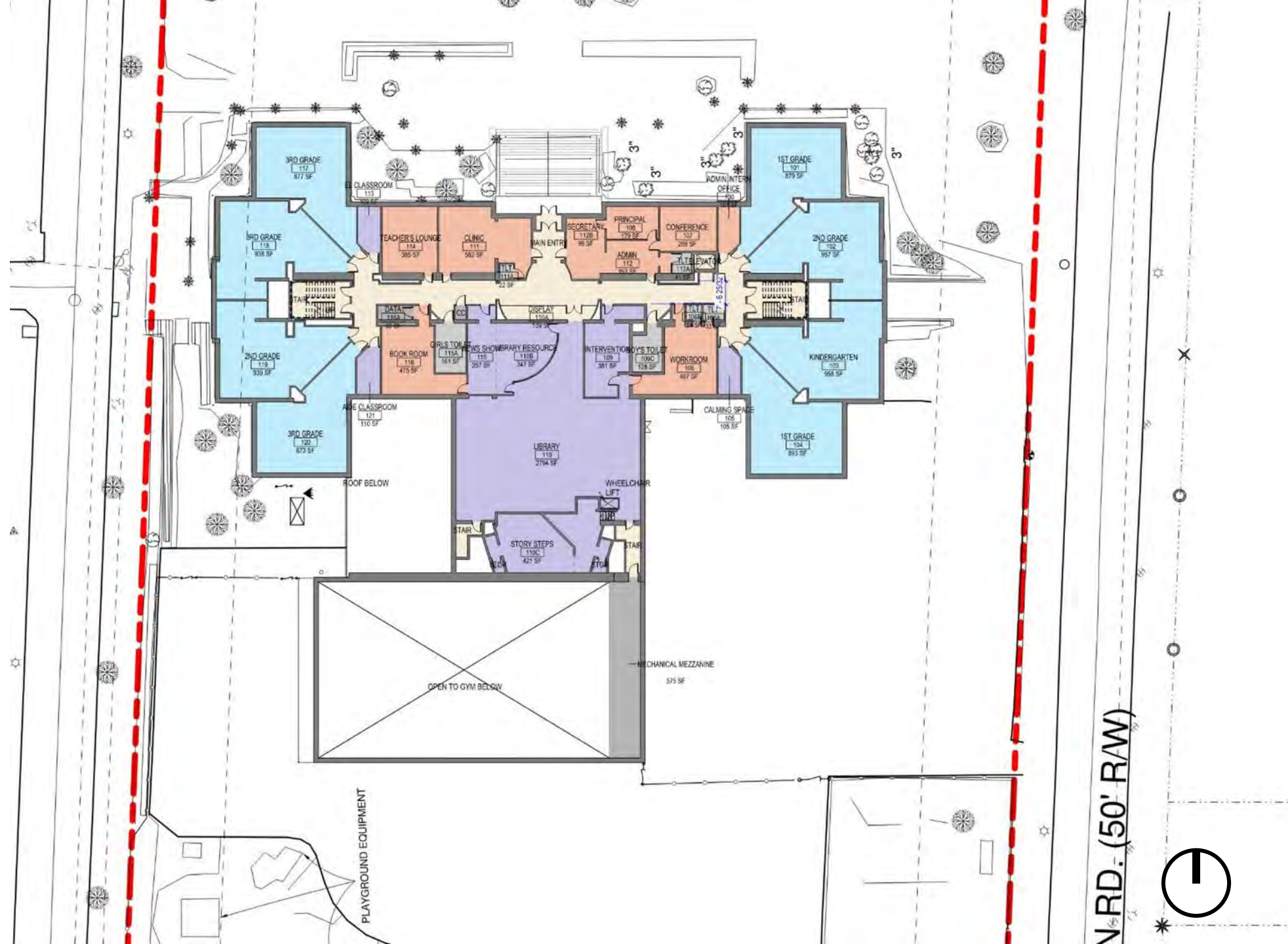
- Most classrooms are triangular shaped making some of the room less usable, therefore usable space is small for current educational modalities
- Most classrooms, have small windows, limiting daylight opportunities
- Cafeteria is undersized and uses adjacent circulation space to meet capacity
- Music room has no natural light
- No large group space for performance / presentations (i.e. - stage)
- No intentionally designed collaborative spaces
- Some student support spaces have no daylight
- Many restrooms are not ADA compliant
- Many rooms have older, less flexible furniture
- Main entry is not ADA compliant – mobility challenged people need to use a side door
- Many offices are non-contiguous and would benefit from consolidation
- Stair circulation is cramped



Chronology



Existing

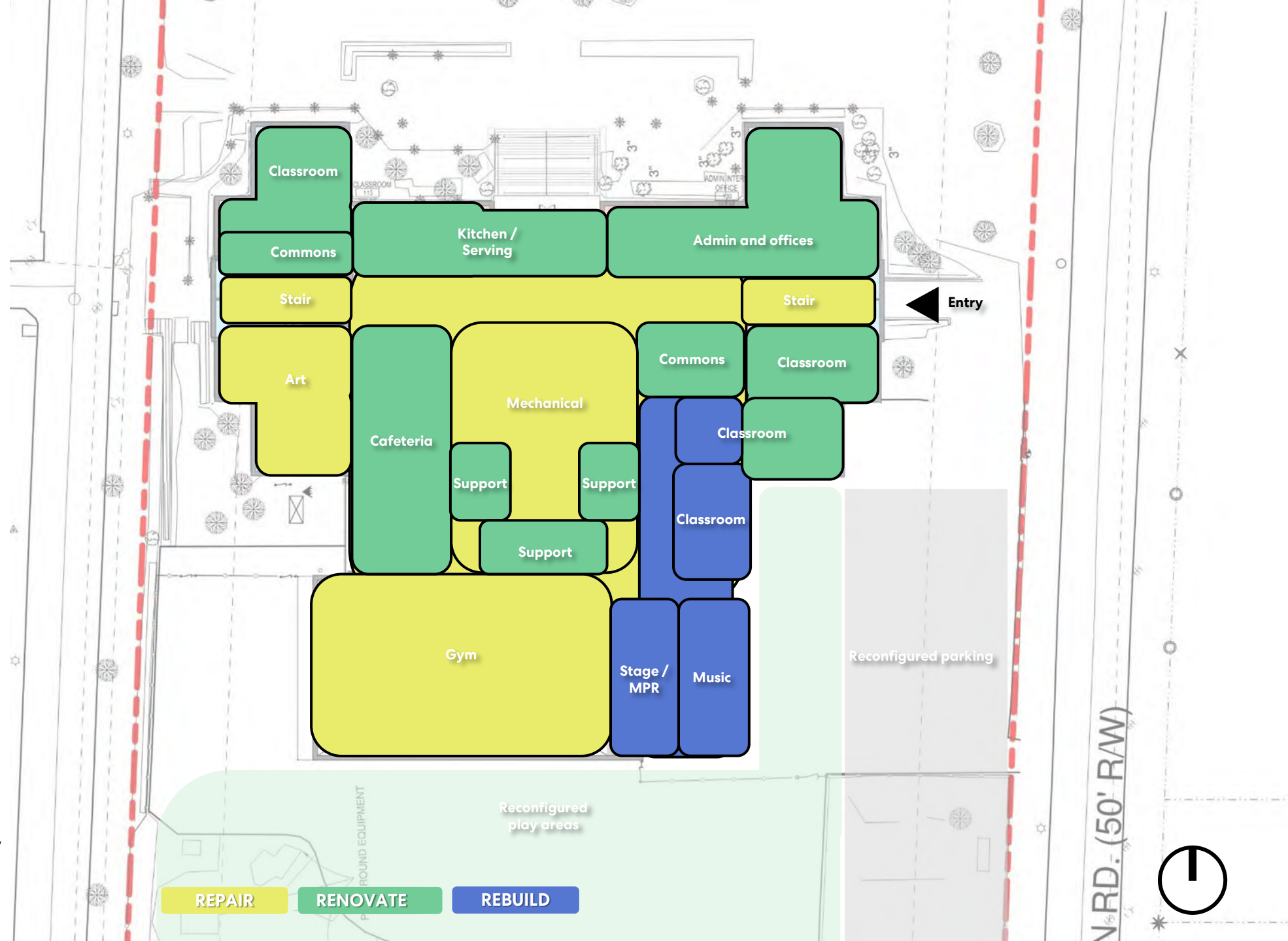


NRD. (50' RAW)

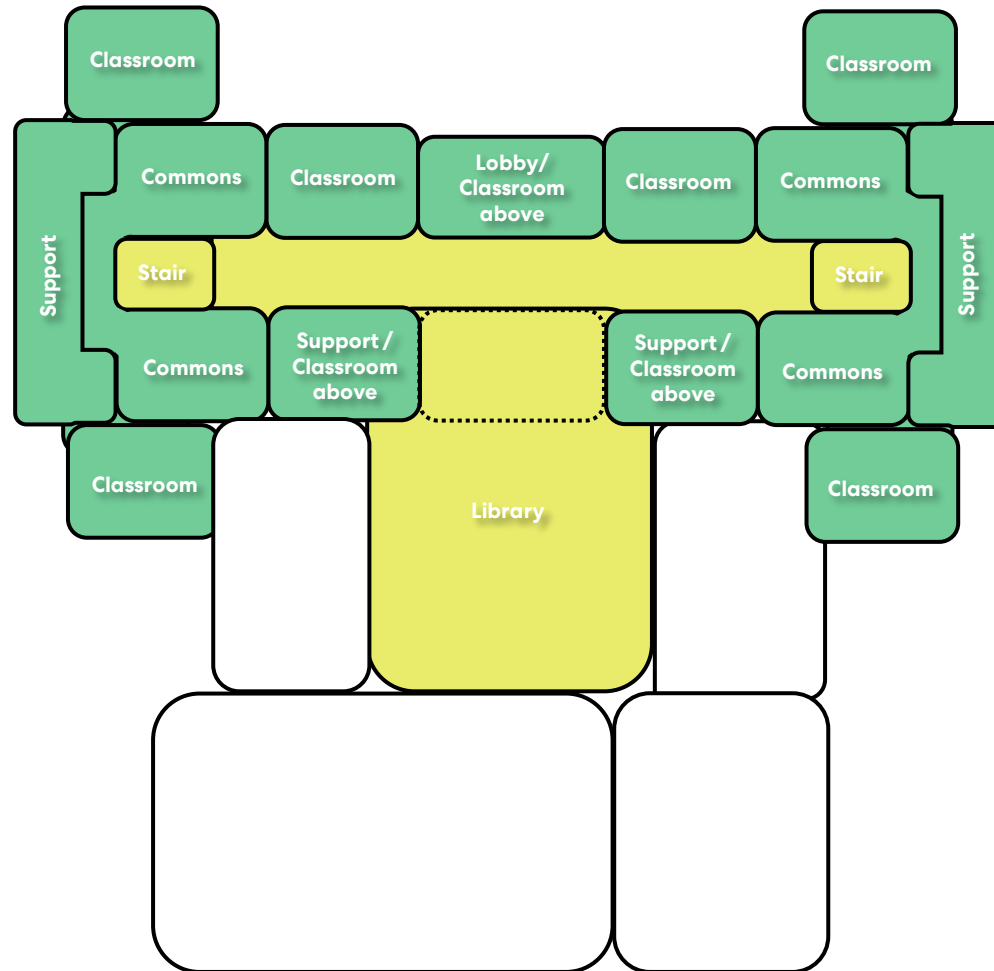


Option A: Level 1 \$

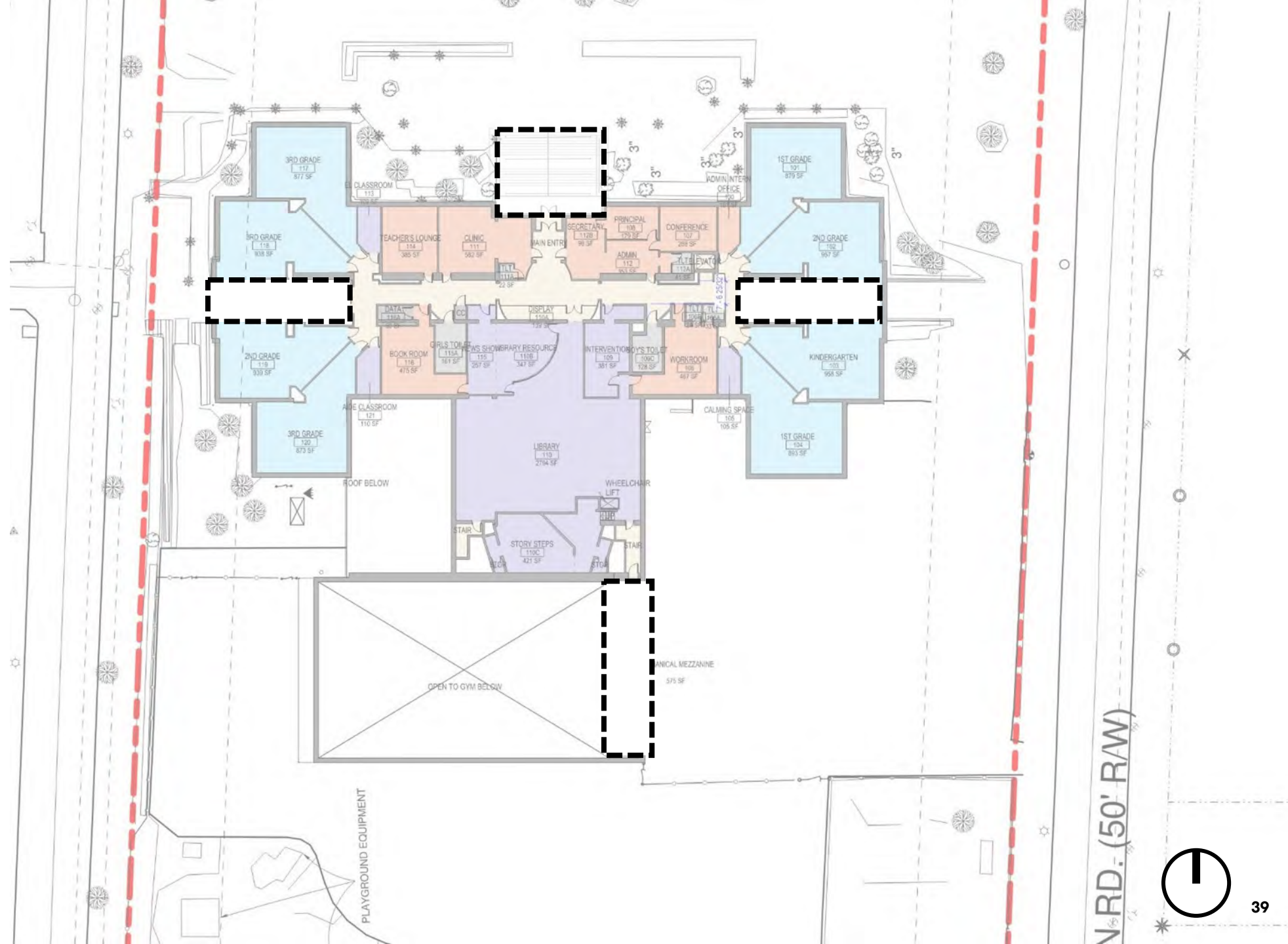
- Rebuild: 1 story ES addition
- Right sized and rectangular classrooms grouped by grade level
- Right sized cafeteria
- Added stage/multi-purpose room
- Right sized support spaces (admin, offices, specials, arts, athletics)
- Improved accessibility, circulation and adjacencies (entry, admin, offices, intervention, gym lobby, grade levels, restrooms)
- Improved natural light for all classrooms
- Additional space for improved kitchen/servery



Option A: Level 2

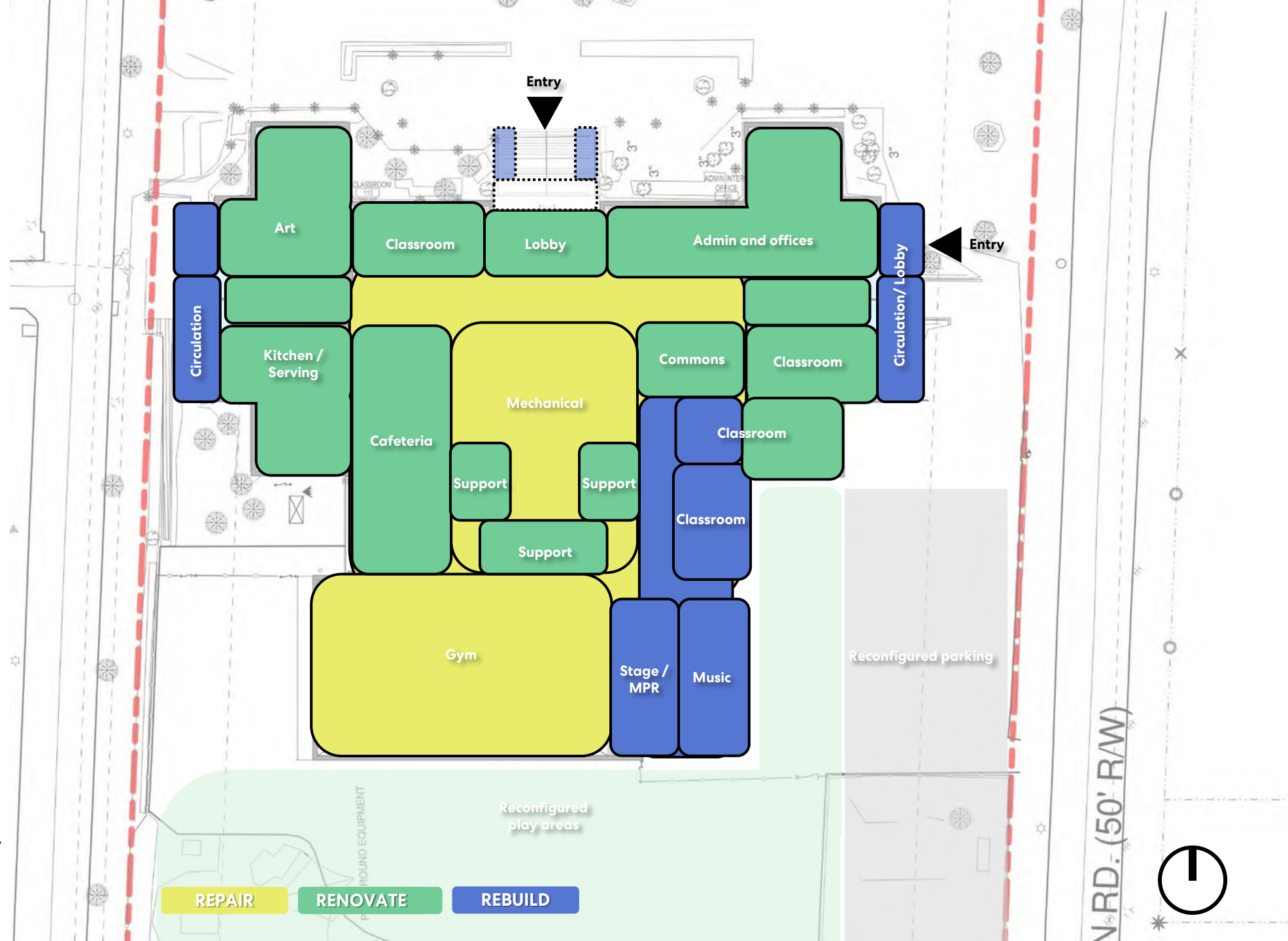


Option B Demolition



Option B: Level 1 \$\$

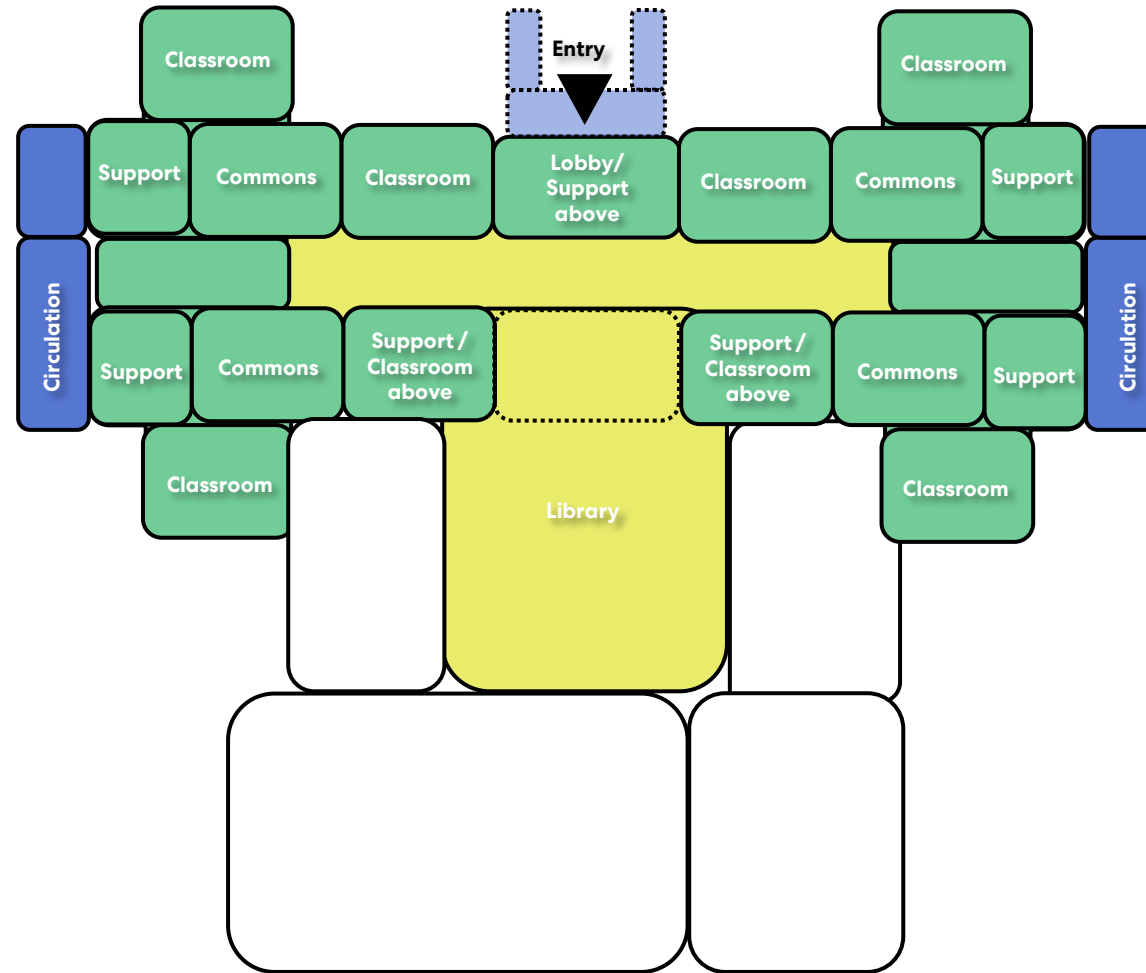
- Rebuild: 1 story ES addition
- Right sized and rectangular classrooms grouped by grade level
- Right sized cafeteria
- Added stage/multi-purpose room
- Right sized support spaces (admin, offices, specials, arts, athletics)
- Improved accessibility, circulation and adjacencies (entry, admin, offices, intervention, gym lobby, grade levels, restrooms)
- Improved natural light for all classrooms
- Additional space for improved kitchen/servery



REPAIR RENOVATE REBUILD

R/W: (50' R/W)

Option B: Level 2

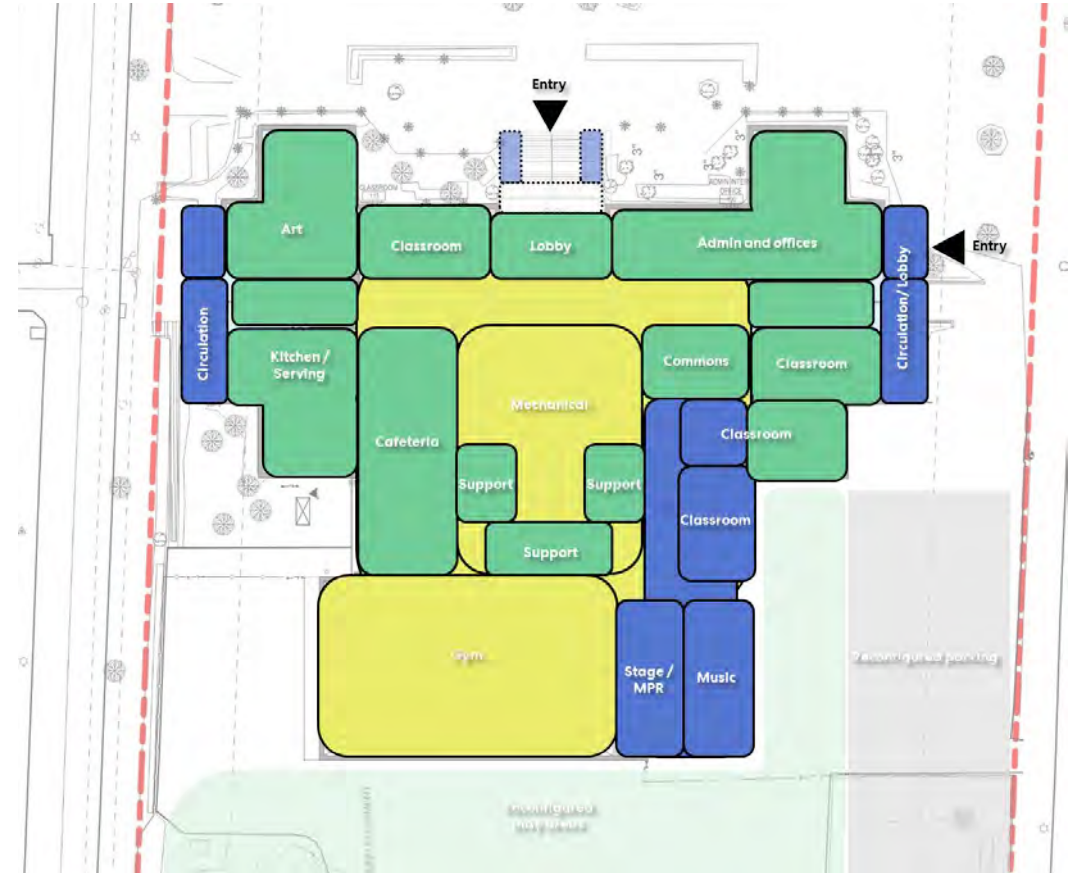


Option Comparison

Option A



Option B



Building Team Summary Comments – Montrose Elementary School

- Like splitting the front stair for main entry accessibility
- Like main administration on main level, with Remington and Main Street entries (like enhancing side entries)
- Like the addition of the stage / multi-purpose room
- Like larger cafeteria / kitchen
- Like improvements to classrooms / support spaces

- Explore the split front stair (accessible Main Street entry) in all options
- Explore structuring the new addition for space to be added on top
- Explore adding more parking if reconfiguring