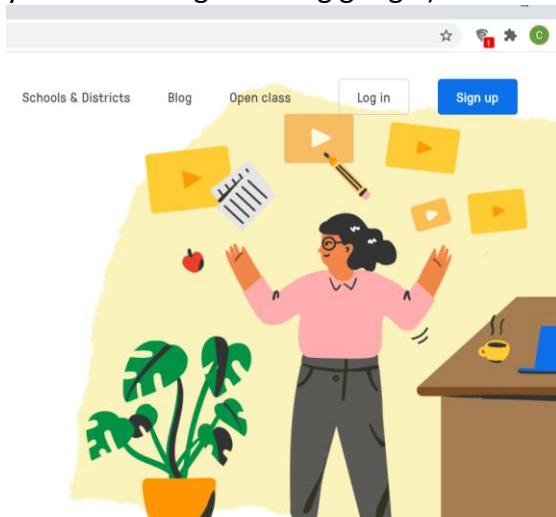
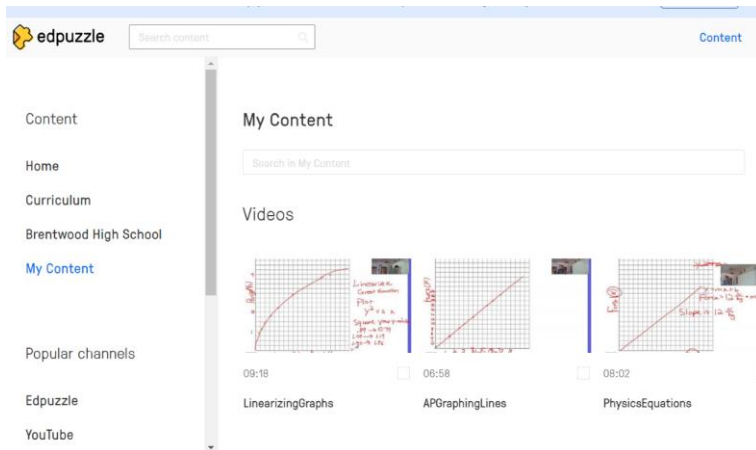


What is EdPuzzle? It's an online platform that allows you to track student progress on any videos that you assign to them and also allows you to pause the video at certain points and either ask questions that they have to answer or you can just add notes that you want the students to be aware of. Once you have any video identified on youtube, it's just a few steps to get that loaded in to EdPuzzle.

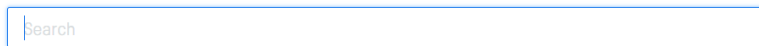
Sign up for a teacher account on EdPuzzle (I used my school e-mail to create my account, but you can also sign in using google)



Go to the content tab and click on the youtube link in the lower left corner

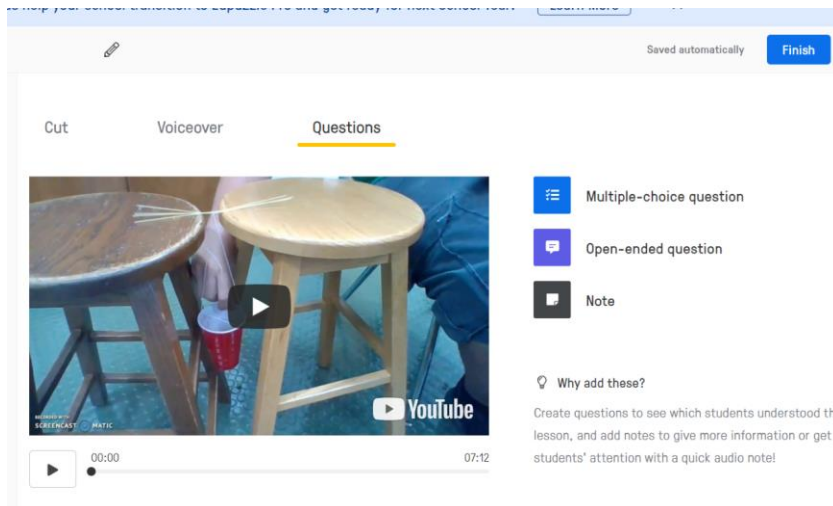


Paste the Youtube link in the search bar

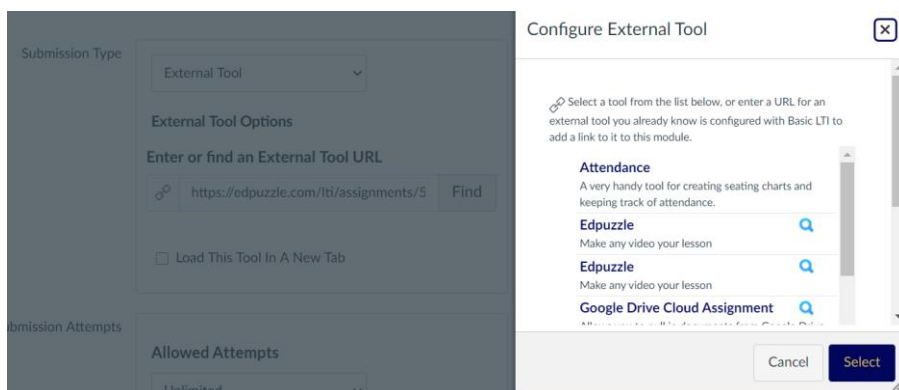


developed with **YouTube**

Your video will load into EdPuzzle. You can snip out portions of the video if you like or add any questions or notes to your video. To add a question, move the cursor to the portion of the video you want the question to appear and then choose the type of question you'd like to insert and create your question. When your done adding all of your questions, click the finish button in the upper right corner and this will save your video in your My Content section.



EdPuzzle works great with Canvas. If you create an assignment and choose External Tool, then choose EdPuzzle



After logging in the first time, you will see all of the videos that you have saved to the My Content area in EdPuzzle. You can choose whichever video you want to assign by clicking on the eyeball.

My Content

Videos



07:12

Marble Lab



07:12

Marble Lab

When students click on the assignment for the first time, a class will automatically be generated in EdPuzzle and the students will automatically be added to your class, based on their class name and student name in Canvas. I know this seems like a lot of steps and might be a bit too advanced for some, but it is a great tool that will let you track whether your students are actually watching the videos at home or not.

If you assign points to the assignment in Canvas, their grade from EdPuzzle will automatically be transferred when they complete the video. For example, if you make it a 10 point assignment and they get 3/5 questions correct on the EdPuzzle video, they will score 6/10 points in Canvas. If you set it as complete/incomplete, they must get all the questions correct in order to automatically receive credit. You can manually override those that you still want to give credit to. (This is the only drawback I've encountered, I wish that you could set a threshold, e.g. anything over 50% gets full credit automatically, but I've had to manually change grades by hand). If you don't assign any questions in the video, it will give them full credit when they've completed the video (watch more than 90%).