

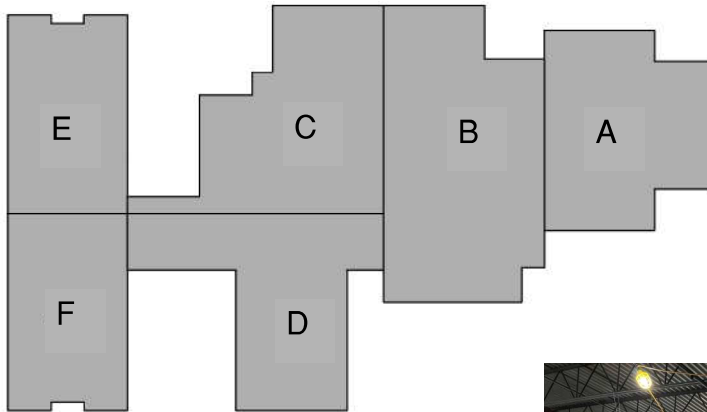


Gilbane Building Company

Sidewalk Superintendent

Issue 4

3.3.2022



**Legend**  
 Area A - Auditorium and Band/Vocal Rooms.  
 Area B - Cafeteria, Kitchen and Mechanical Areas.  
 Area C - Gymnasiums, Locker Rooms and Mechanical Areas.  
 Area D - Kindergarten and Media Center.  
 Area E/F - Classroom Wing.

### Happening This Month

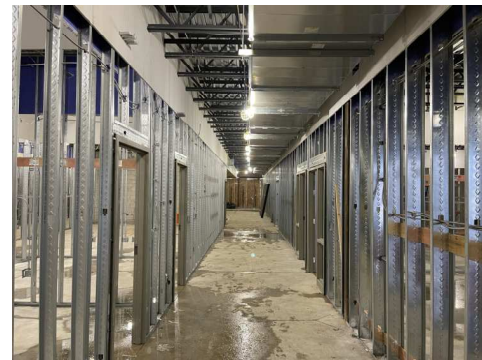
- Masonry Bearing Complete on Area B.
- Structural Steel complete on Area E and F.
- Masonry Bearing on going in Area D.
- Roofing Starting on Area E and F.
- Masonry Veneer starting on Area C (east side of gyms) and Area A (north side of auditorium).
- Metal Studs will be complete in classroom wing.
- MEP overhead rough-in continues in Area E and F 1st and 2nd floor



Area E 1st Floor



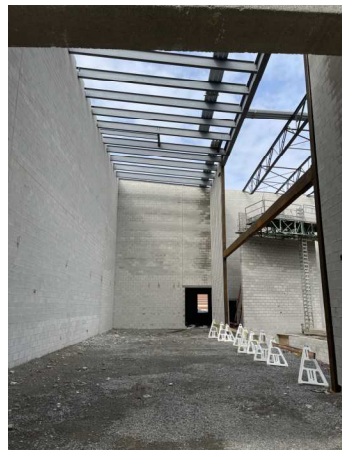
Area F 2nd Floor



Area A (Stage, looking South to North)



Area D (Looking West to East)



### Coming Next Month

- Masonry Veneer Starting.
- Interior Metal Studs.
- Overhead Sprinkler Roughin continuing.
- Overhead HVAC Roughin continuing.
- Overhead Electrical Roughin continuing.
- Masonry Bearing Area A complete.
- Masonry Bearing Area D complete.
- Roof Dry-in complete on Area E, F, High Roof of C and High Roof of A.