

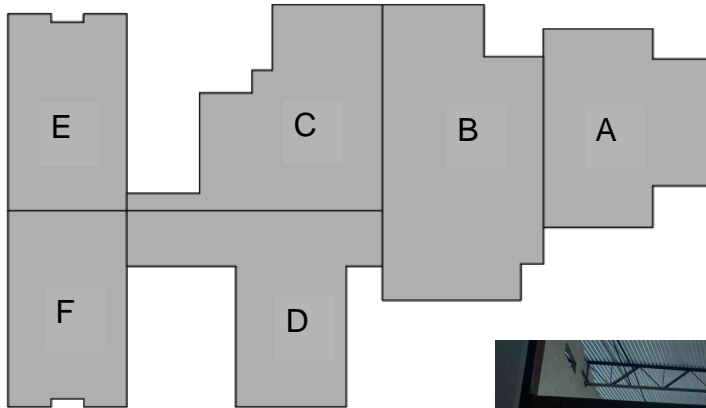


Gilbane Building Company

Sidewalk Superintendent

Issue 5

4.12.2022

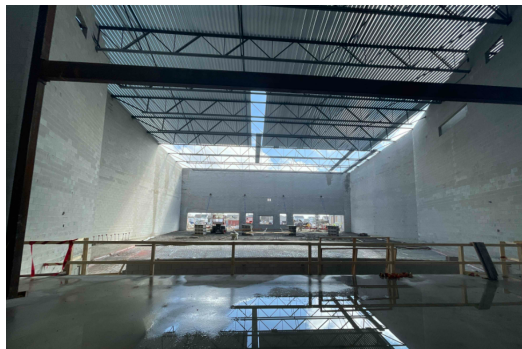


Legend

Area A - Auditorium and Band/Vocal Rooms.
Area B - Cafeteria, Kitchen and Mechanical Areas.
Area C - Gymnasiums, Locker Rooms and Mechanical Areas.
Area D - Kindergarten and Media Center.
Area E/F - Classroom Wing.

Happening This Month

- Masonry Bearing Complete on Area D.
- Structural Steel complete on Area B.
- Masonry Bearing complete in Area D.
- Roofing Starting on Area A.
- Masonry Veneer starting on Area F and will be finishing on Area A around the music rooms.
- Drywall will be complete in Area E and moving to Area F on the 1st floor.
- Plumbing rough-in on going 1st floor.
- Electrical and Duct overhead complete on 1st and 2nd floor.



Area A (Stage looking east to seating area)

Area E 1st Floor



Area B (Looking from main entrance south at the cafeteria)



Area D (Looking North to South)

Coming Next Month

- Masonry Veneer complete in Area A and Area F.
- Interior Metal Studs in Area D and Area B.
- Membrane roof starting in low slope areas.
- Structural Steel complete.
- Masonry Bearing Area D complete.
- Concrete slab on grade will be completed throughout the building.
- MEP's will continue overhead and in-wall.
- Standing seam metal roof will start.

