



## Facility Improvement and Expansion Project

**BACKGROUND:** Cumberland Perry Area CTC is owned and operated by a 13-district consortium and provides regional Career and Technical Education to students effectively and efficiently. The CTC has completed extensive evaluation and planning to ensure that the facility is able to successfully continue our mission to prepare students for employment and post-secondary education in areas that are essential to our community. The planning process has included input from school and regional stakeholders, advisory committees, and other organizations as well as workforce data and projections.

### WHY?

- Enrollment has increased over 40% from September 2011 to September 2022;
- 300+ students remained on the waiting list for 2022-2023
- Employment projections for technical programs are extremely high; CPACTC currently reaches about 13% of eligible students but does not have capacity for a significant increase, much less the 17% or more seen in other CTCs and necessary to meet community needs.
- CPACTC is a 50-year-old facility and is dated in different aspects, with several operational deficiencies within our programs.

## IMPROVEMENTS

- Modernize the Logistics and Warehouse Management program.
- Provide Culinary Arts appropriate classroom space
- Relocate Electrical Construction/Maintenance program to construction cluster proximity
- Enhance school security through an update to building entrance/façade
- Provide Criminal Justice increased activity space
- Provide more efficient facility/program storage areas.

## EXPANSION/Growth

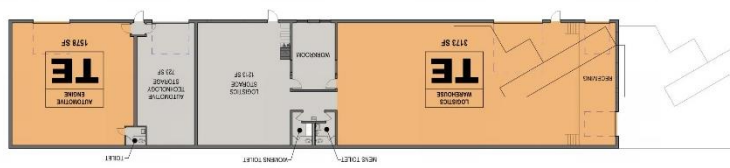
Additional capacity of 278 STUDENTS through:

- Increased capacity of Welding program
- Increased capacity of Automotive Technology program
- Increased capacity of Automotive Collision program
- Increased capacity of Advanced Manufacturing Technology Program
- Addition of Pre-Engineering Program
- Addition of Building/Property Maintenance Program
- Addition of Emergency Management/Homeland Security program
- Addition of Service Occupations program

# EXISTING FLOOR PLAN



- Arts & Technology
- Transportation
- Advanced Manufacturing
- Construction & Maintenance
- Human Services & Hospitality
- Health Sciences



# PROPOSED FLOOR PLAN



- Arts & Technology
- Transportation
- Advanced Manufacturing
- Construction & Maintenance
- Human Services & Hospitality
- Health Sciences