



WEST SHORE S.D.

Student Success

A LOOK AT GROWTH &
ACHIEVEMENT IN 2022-2023

March 21, 2024

#WestShoreProud





STUDENT SUCCESS: A LOOK AT GROWTH AND ACHIEVEMENT

Indicators of Success

- **State Growth and Achievement Data**
- **District/Building Growth and Achievement Data**
- **Growth and Achievement Plan**





STUDENT SUCCESS: A LOOK AT GROWTH AND ACHIEVEMENT

Elementary PSSA Data

ENGLISH LANGUAGE ARTS

ELEMENTARY SCHOOLS	Third Grade ELA				Fourth Grade ELA				Fifth Grade ELA			
	2019	2021	2022	2023	2019	2021	2022	2023	2019	2021	2022	2023
Fairview	77	75	75	73	86	66	85	84	71	70	71	70
Fishing Creek	69	66	61	51	82	63	60	68	64	67	64	71
Highland	63	58	52	61	71	69	55	55	60	48	72	61
Hillside	63	53	56	56	62	48	48	58	60	45	58	45
Newberry	62	41	41	56	72	34	41	25	42	23	58	52
Red Mill	78	64	58	56	79	67	75	67	78	68	59	72
Rossmoyne	68	53	69	57	77	48	49	63	55	53	54	52
Washington Heights	48	38	38	36	65	43	43	50	46	32	50	48
DISTRICT	66	57	55	55	73	58	56	60	60	55	62	59
STATE AVG	62	58	52	54	64	57	52	52	59	55	54	54



STUDENT SUCCESS: A LOOK AT GROWTH AND ACHIEVEMENT

Elementary PSSA Data

MATH & SCIENCE

ELEMENTARY SCHOOLS	Third Grade Math				Fourth Grade Math				Fifth Grade Math				Fourth Grade Science			
	2019	2021	2022	2023	2019	2021	2022	2023	2019	2021	2022	2023	2019	2021	2022	2023
Fairview	80	68	86	75	59	42	78	74	57	54	41	66	86	85	97	91
Fishing Creek	78	61	63	60	64	44	49	53	52	44	38	53	91	81	83	78
Highland	61	50	56	71	50	55	47	48	41	30	42	46	82	88	78	80
Hillside	56	46	54	48	41	31	44	55	31	27	37	44	82	69	74	81
Newberry	60	49	49	51	48	53	27	25	42	41	41	52	88	73	73	69
Red Mill	77	66	58	65	59	53	77	72	65	48	38	70	93	91	93	91
Rossmoyne	69	45	68	58	60	30	36	55	37	42	41	39	84	74	71	84
Washington Heights	55	30	32	29	33	16	36	46	36	32	17	53	82	84	72	84
DISTRICT	66	51	57	58	51	39	50	56	45	38	37	51	86	80	81	82
STATE	56	47	48	52	46	36	42	46	43	36	35	43	78	76	74	74



STUDENT SUCCESS: A LOOK AT GROWTH AND ACHIEVEMENT

Elementary Growth Data

ELEMENTARY SCHOOLS	ELA Academic Growth Score	Math Academic Growth Score	Science Academic Growth Score
Fairview	79	50	57
Fishing Creek	100	75	94
Highland	73	78	96
Hillside	71	75	70
Newberry	86	94	64
Red Mill	100	77	100
Rossmoyne	69	67	56
Washington Heights	100	100	100
Meeting Growth Standard	70	70	70
STATE AVERAGE	75.4	74.9	74.7



STUDENT SUCCESS: A LOOK AT GROWTH AND ACHIEVEMENT

Middle School PSSA Data

ENGLISH LANGUAGE ARTS

MIDDLE SCHOOLS	Sixth Grade ELA				Seventh Grade ELA				Eighth Grade ELA			
	2019	2021	2022	2023	2019	2021	2022	2023	2019	2021	2022	2023
Allen	76	65	65	65	68	59	64	62	70	55	65	62
Crossroads	65	58	58	59	65	58	60	59	53	58	62	51
New Cumberland	59	56	52	59	60	40	67	49	70	49	50	49
DISTRICT	66	60	58	61	64	53	64	56	64	55	59	55
STATE	63	57	56	56	60	53	57	54	58	53	56	53



STUDENT SUCCESS: A LOOK AT GROWTH AND ACHIEVEMENT

Middle School PSSA Data

MATH & SCIENCE

MIDDLE SCHOOLS	Sixth Grade Math				Seventh Grade Math				Eighth Grade Math				Eighth Grade Science			
	2019	2021	2022	2023	2019	2021	2022	2023	2019	2021	2022	2023	2019	2021	2022	2023
Allen	51	35	51	46	38	27	30	45	41	27	27	32	68	50	59	63
Crossroads	44	30	40	41	45	22	30	39	30	24	20	31	58	49	57	65
New Cumberland	37	22	23	31	32	15	22	16	34	17	12	17	65	45	48	54
DISTRICT	45	29	37	39	40	21	28	36	35	24	20	27	64	48	55	61
STATE	39	28	32	36	38	27	27	33	32	22	23	26	58	51	51	57



STUDENT SUCCESS: A LOOK AT GROWTH AND ACHIEVEMENT

Keystone Scores

HIGH SCHOOLS	Algebra				Biology				ELA/Literature			
	2019	2021	2022	2023	2019	2021	2022	2023	2019	2021	2022	2023
Cedar Cliff	62.7	56.4	68.7	30.7	66	63.7	54.4	43.2	74	41.7	68.1	57
Red Land	67.2	55.8	71.1	55.7	74.7	75	41	61.8	81.3	*	64.8	75.8
State Average	63.3	37.3	63.9	34.2	63.2	67.6	41.9	50.7	71.5	49.6	64.9	65.3

* PDE reported insufficient data for Red Land in English in 2021



STUDENT SUCCESS: A LOOK AT GROWTH AND ACHIEVEMENT

Secondary Growth Data

	ELA Academic Growth Score	Math/Algebra Academic Growth Score	Science/Biology Academic Growth Score
MIDDLE & HIGH SCHOOLS			
Allen	77	79	71
Crossroads	65	76.8	69
New Cumberland	50	70.8	54
Meeting Growth Standard	70	70	70
STATE AVERAGE	75.4	74.9	74.7
Cedar Cliff	72	63	76
Red Land	100	84	80
Meeting Growth Standard	70	70	70
STATE AVERAGE	75.4	74.9	74.7



STUDENT SUCCESS: A LOOK AT GROWTH AND ACHIEVEMENT

ELA Proficiency Targets

SUBGROUPS	BASELINE DATA	2018	2019	2020	2021	2022	2023	2024	2025	2026	2027	2028	2029	2030
All Students	61.6	63.1	64.6	66.1	67.6	69.1	70.6	72.1	73.6	75.1	76.6	78.1	79.6	81.1
White	69.4	70.6	71.8	73	74.2	75.4	76.6	77.8	79	80.2	81.4	82.6	83.8	85
African-American/Black	35.9	38.4	40.9	43.4	45.9	48.4	50.9	53.4	55.9	58.4	60.9	63.4	65.9	68.4
Hispanic	40	42.3	44.6	46.9	49.2	51.5	53.8	56.1	58.4	60.7	63	65.3	67.6	69.9
Asian (not Hispanic)	77.9	78.8	79.7	80.6	81.5	82.4	83.3	84.2	85.1	86	86.9	87.8	88.7	89.6
American Indian or Alaskan Native	55.3	57	58.7	60.4	62.1	63.8	65.5	67.2	68.9	70.6	72.3	74	75.7	77.4
Multi-Racial (not Hispanic)	55	56.7	58.4	60.1	61.8	63.5	65.2	66.9	68.6	70.3	72	73.7	75.4	77.1
Hawaiian Native/Pacific Islander	70	71.2	72.4	73.6	74.8	76	77.2	78.4	79.6	80.8	82	83.2	84.4	85.6
Students with Disabilities	25.3	28.2	31.1	34	36.9	39.8	42.7	45.6	48.5	51.4	54.3	57.2	60.1	63
English Learners	11.7	15.1	18.5	21.9	25.3	28.7	32.1	35.5	38.9	42.3	45.7	49.1	52.5	55.9
Economically Disadvantaged	43.9	46.1	48.3	50.5	52.7	54.9	57.1	59.3	61.5	63.7	65.9	68.1	70.3	72.5



STUDENT SUCCESS: A LOOK AT GROWTH AND ACHIEVEMENT

Math Proficiency Targets

SUBGROUPS	BASELINE DATA	2018	2019	2020	2021	2022	2023	2024	2025	2026	2027	2028	2029	2030
All Students	43.2	45.4	47.6	49.8	52	54.2	56.4	58.6	60.8	63	65.2	67.4	69.6	71.8
White	50.5	52.4	54.3	56.2	58.1	60	61.9	63.8	65.7	67.6	69.5	71.4	73.3	75.2
African-American/Black	17.1	20.3	23.5	26.7	29.9	33.1	36.3	39.5	42.7	45.9	49.1	52.3	55.5	58.7
Hispanic	22.7	25.7	28.7	31.7	34.7	37.7	40.7	43.7	46.7	49.7	52.7	55.7	58.7	61.7
Asian (not Hispanic)	68.4	69.6	70.8	72	73.2	74.4	75.6	76.8	78	79.2	80.4	81.6	82.8	84
American Indian or Alaskan Native	35	37.5	40	42.5	45	47.5	50	52.5	55	57.5	60	62.5	65	67.5
Multi-Racial (not Hispanic)	35.2	37.7	40.2	42.7	45.2	47.7	50.2	52.7	55.2	57.7	60.2	62.7	65.2	67.7
Hawaiian Native/Pacific Islander	50.2	52.1	54	55.9	57.8	59.7	61.6	63.5	65.4	67.3	69.2	71.1	73	74.9
Students with Disabilities	17.2	20.4	23.6	26.8	30	33.2	36.4	39.6	42.8	46	49.2	52.4	55.6	58.8
English Learners	9.3	12.8	16.3	19.8	23.3	26.8	30.3	33.8	37.3	40.8	44.3	47.8	51.3	54.8
Economically Disadvantaged	25.7	28.6	31.5	34.4	37.3	40.2	43.1	46	48.9	51.8	54.7	57.6	60.5	63.4

SOURCE: <https://www.education.pa.gov/K-12/ESSA/ESSAReportCard/Goals/Pages/default.aspx>



STUDENT SUCCESS: A LOOK AT GROWTH AND ACHIEVEMENT

Keystones & CDTs

The Pennsylvania Classroom Diagnostic Tools (CDT) is a set of online assessments, divided by content area, designed to provide diagnostic information in order to guide instruction and remediation.

The CDT reporting system is fully integrated in the Standards Aligned System (SAS). It assists educators in identifying student academic strengths, and areas in need of improvement, by providing links to classroom resources. The diagnostic reports feature easy-to-follow links to targeted curricular resources and materials, including units and lesson plans found within the SAS system.



STUDENT SUCCESS: A LOOK AT GROWTH AND ACHIEVEMENT

Targeted Support and Improvement (TSI) Designation

Cedar Cliff High School has been placed on a list of schools that demonstrate a need for targeted support & improvement due to unsatisfactory performance in specific areas for specific populations.

Areas for Improvement	Populations
Achievement: Math & ELA Combined	Student w Disabilities, English Learners, Black Students
Growth: Math & ELA Combined	Student w Disabilities, English Learners, Black Students
Regular Attendance	English Learners
Graduation Rate: 4 & 5-year Cohort Combined	Students w Disabilities, Black Students
English Language Proficiency	English Learners



STUDENT SUCCESS: A LOOK AT GROWTH AND ACHIEVEMENT

Building Level Scores • 2023

Elementary Schools

	2022	2023
Fairview	82.0	75.5
Fishing Creek	68.8	82.4
Highland	75.2	78.3
Hillside	72.4	73.6
Newberry	73.1	74.5
Red Mill	81.3	86.4
Rossmoyne	69.6	71.2
Washington Heights	69.1	82

Middle Schools

	2022	2023
Allen	77.0	73.5
Crossroads	64.4	68.4
New Cumberland	66.8	61.3

High Schools

	2022	2023
Cedar Cliff	77.8	65.6
Red Land	81.9	81.6



Building Level Scores were formerly referred to by PDE as School Performance Profile (SPP) Scores.



STUDENT SUCCESS: A LOOK AT GROWTH AND ACHIEVEMENT

Responses to Data

2024-2025

- High School Reading Intervention
- Middle School Intensive Scheduling
- Implementation of new K-8 ELA program
- Implementation of new 5-8 science program
- Structured Literacy Training for all elementary teachers

2024

- Increased support for special education case managers at Cedar Cliff High School



STUDENT SUCCESS: A LOOK AT GROWTH AND ACHIEVEMENT

Maslow's Hierarchy of Needs

Maslow's hierarchy of needs is a motivational theory in psychology comprising a five-tier model of human needs, often depicted as hierarchical levels within a pyramid.

Needs lower down in the hierarchy must be satisfied before individuals can attend to needs higher up.





STUDENT SUCCESS: A LOOK AT GROWTH AND ACHIEVEMENT

Disaggregating Data

2023 MATH ACHIEVEMENT DATA

	Red Mill	Washington Heights	Crossroads Middle School	Cedar Cliff High School
All Students	70.6%	44.2%	35.8%	30.7%
Economically Disadvantaged	56%	31.7%	25.2%	17.3%
Students with Disabilities	35.9%	16.7%	4.9%	4.8%
STATE	38.3%	37.3%	38.3%	38.3%



STUDENT SUCCESS: A LOOK AT GROWTH AND ACHIEVEMENT

Five Pathways to Graduation

ACT 158

- **Keystone Proficiency**
- **Keystone Composite Score**
- **Career & Technical Education**
- **Alternative Assessment**
- **Evidence-Based**



SOURCE: <https://www.wssd.k12.pa.us/GraduationPathways1.aspx>



STUDENT SUCCESS: A LOOK AT GROWTH AND ACHIEVEMENT

Career & Workplace Readiness



	Cedar Cliff	Red Land	District
Advanced Placement (AP) Courses	261	326	587
College in the High School/Dual Enrollment	499	160	659
Pathway Internships	66	38	104
Cooperative Education Placements	58	41	99
Industry Credentials Earned			40 CTC 300 Other



STUDENT SUCCESS: A LOOK AT GROWTH AND ACHIEVEMENT

Career & Workplace Readiness

Cumberland Perry Area Career & Technical Center Enrollment

School Year	High School Enrollment	Number of Students Attending CFACTC		
		CEDAR CLIFF	RED LAND	DISTRICT
2018-2019	2,419	102	105	207
2019-2020	2,405	111	129	240
2020-2021	2,480	141	135	276
2021-2022	2,444	136	159	295
2022-2023	2,465	130	156	286





STUDENT SUCCESS: A LOOK AT GROWTH AND ACHIEVEMENT

Future Plans • Class of 2023

Cedar Cliff

Four Year College 60%

Two Year College 14%

Vocational 1%

Armed Services 1%

Employment 23%

Undecided/Other 0%



Red Land

Four Year College 45%

Two Year College 18%

Vocational 2%

Armed Services 4%

Employment 27%

Undecided/Other 4%

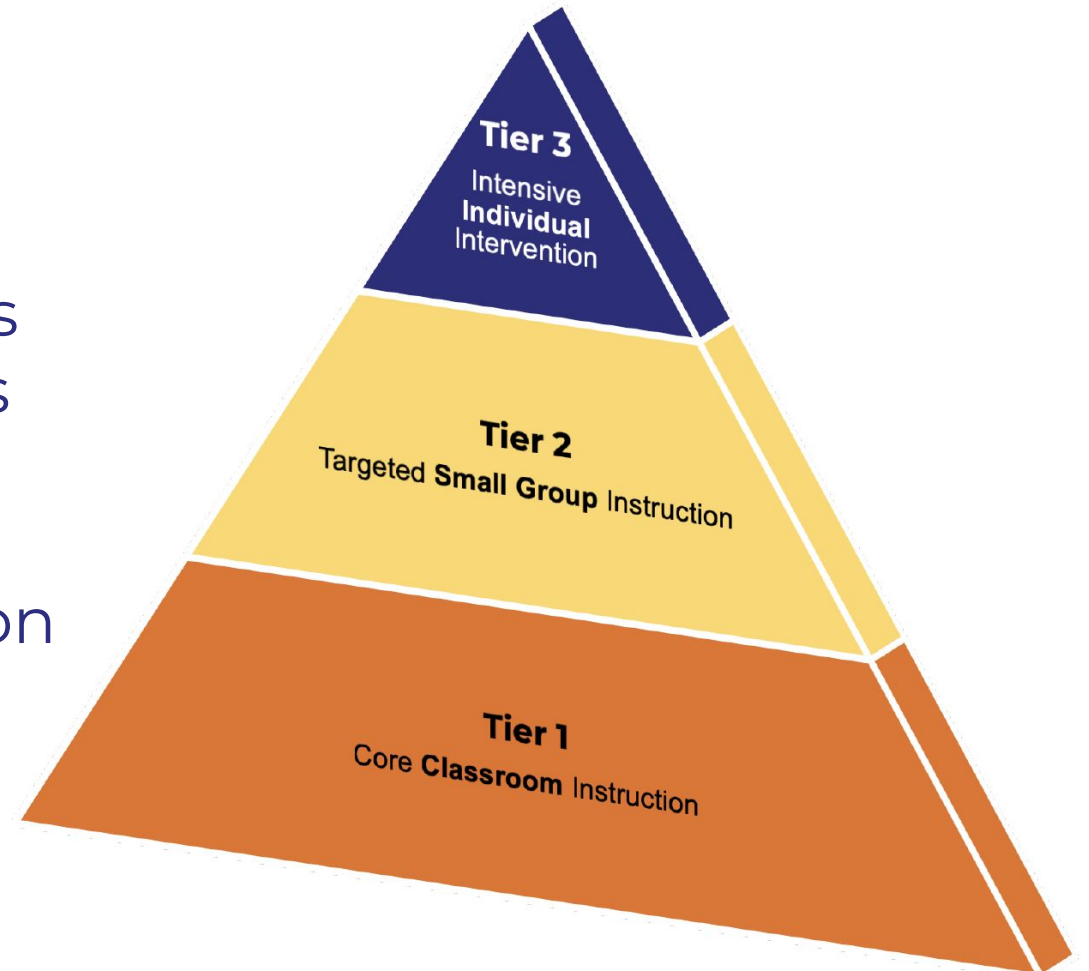


STUDENT SUCCESS: A LOOK AT GROWTH AND ACHIEVEMENT

Meeting Student Needs

Multi-Tiered Systems of Support

Multi-Tiered Systems of Support (MTSS) is an instructional framework that includes universal screening of all students, multiple tiers of instruction and support services, and an integrated data collection and assessment system to inform decisions at each tier of instruction.





STUDENT SUCCESS: A LOOK AT GROWTH AND ACHIEVEMENT

Elementary Summer Programs

- Cool School
- Mission Transition
- Extended School Year (ESY)
- English Learners
- Camp Kindergarten

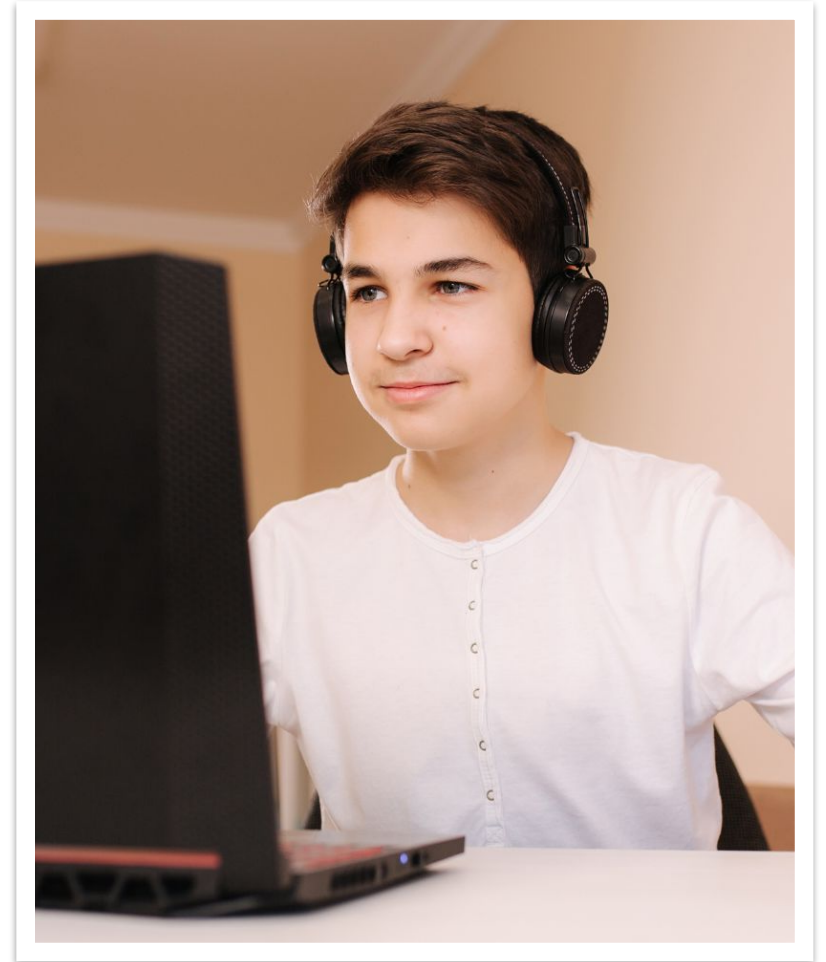




STUDENT SUCCESS: A LOOK AT GROWTH AND ACHIEVEMENT

Middle School Summer Programs

- **Project Phoenix**
- **CAOLA Credit Recovery**





STUDENT SUCCESS: A LOOK AT GROWTH AND ACHIEVEMENT

High School Summer Programs

- CAOLA Acceleration
- CAOLA Credit Recovery
- Schoology Acceleration
- Cooperative Education





Our Why

We are committed to providing students with inspiring and relevant experiences so they may live meaningful, purposeful, and impactful lives.

#WestShoreProud