



COMMUNICATIONS GUIDANCE

FOR COVID-19 POSITIVE CASES



POSSIBLE CAUSES FOR SOMEONE TO QUARANTINE



Individuals may quarantine to monitor their health to ensure they are not at risk of infecting others.

Individuals may quarantine because they are caring for someone who is vulnerable.



Individuals may quarantine because they are someone who is vulnerable.

Individuals may quarantine because a member of their household has been named as a close contact to someone who has tested positive for COVID-19.



Individuals may quarantine because they are following directions from their state or local health department.

An individual's privacy is protected by law. FERPA and HIPPA prevent a district or school from sharing a person's medical information or status.



References:

CDC - When to Quarantine

NCDHHS - Reference Guide

WHAT IF...

A STUDENT TESTS POSITIVE?



SCENARIO

Student feels unwell in classroom



Teacher calls nurse to the classroom



Nurse takes student's temperature and discusses symptoms



Student has a fever over 100.4°F and/or symptoms



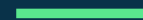
Nurse isolates student until parent can pick up student



Parent has the option to get the student tested



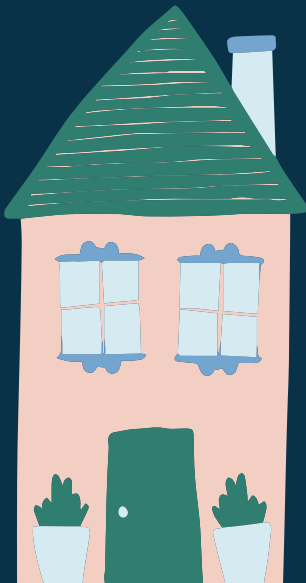
TEST IS POSITIVE
Student should remain out of school until 10 days have passed since date of first positive COVID-19 test, assuming they have not subsequently developed symptoms since their positive test.



TEST IS NEGATIVE
Student can return to school once there is no fever without the use of fever-reducing medication and they have felt well for 24 hours.

WHAT IF...

A FAMILY MEMBER TESTS POSITIVE?



SCENARIO

Student has someone at home who is positive for COVID-19



Student must quarantine at home for 14 days after the last day of exposure



Parent has the option to get student tested

Should one member of the household have a positive test OR be named a close contact to a positive case, children must be quarantined until 14 days from the last day of exposure. Should symptoms develop, the quarantine would be ten (10) additional days.



WHAT IF...

A STAFF MEMBER TESTS POSITIVE?



SCENARIO

Staff member tests positive for COVID-19



Staff member notifies school administration
who tells district administration



District notifies local county health department



Local health department interviews individual who has
tested positive for COVID-19 and begins contact tracing



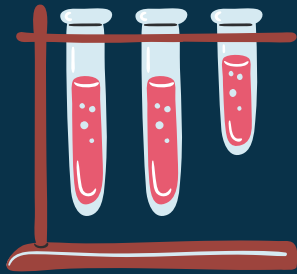
Health department alerts any person/family
who needs to self-isolate due to being a close contact



**District ONLY informs individuals deemed
“need to know” of the positive case for cleaning
and personnel purposes (may change)**

Substitute is arranged for learning to continue for students.

BENCHMARKS TO PREVENT COVID-19 CLUSTERS



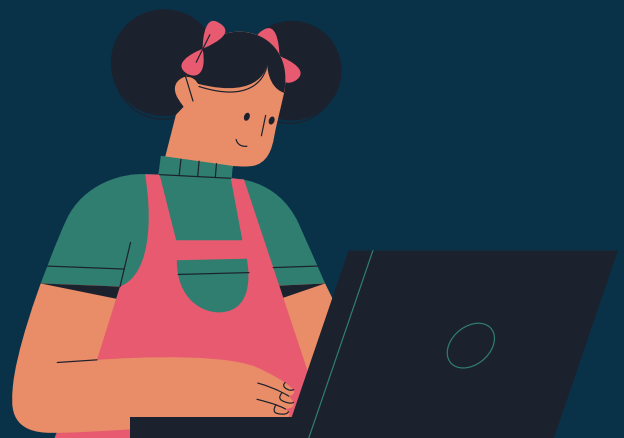
In a child care or school setting, a COVID-19 cluster is defined as a minimum of five laboratory-confirmed cases with illness onsets on initial positive results within a 14-day period and a relational link between the cases.



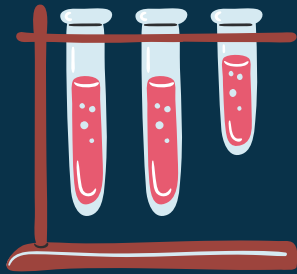
All Asheboro City elementary schools are keeping students to one cohort of students. Therefore, in an event there are three (3) confirmed cases within one face-to-face class for K-5th grade students that are related, the elementary school may move that group to remote learning for a designated period to avoid a cluster.



*Note: Each situation has its own set of circumstances and the district will take time to think through each event. Therefore, at any time, the elementary school may move a class or grade level to remote instruction out of an abundance of caution.



BENCHMARKS TO PREVENT COVID-19 CLUSTERS CONT.



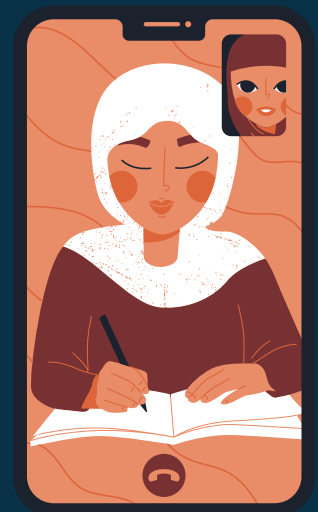
North and South Asheboro Middle School students are not interacting with students outside of their grade level.

Therefore, in an event there are three (3) confirmed cases within once face-to-face grade level for 6th-8th grade students that are related, the school may move that group to remote learning for a designated period of time to avoid a cluster.



Asheboro High School is tracking students by their schedule.

Therefore, in an a event that there are three (3) confirmed cases within one face-to-face class for 9th-12th grade school students, AHS may move that group to remote learning for a designated period to avoid a cluster.



FOR QUESTIONS REGARDING POSITIVE CASES/SCHOOL CLOSURES



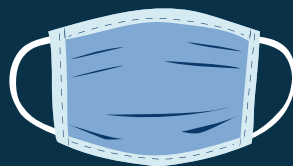
Positive Case: The local health department will alert families if a student had prolonged contact with a positive case. No notification will be sent by the school if there is a positive case. Any questions to the school regarding positive cases should be answered with:



"We realize students may exhibit symptoms of illness; however, this information is protected by law through FERPA and HIPAA. Should there be close contact or confirmed cases, our local health department will conduct contract tracing and advise parents/guardians by phone call.



We can assure families that all measures are being taken to prevent the spread of COVID-19 on our campuses. We have scheduled daily cleaning protocols, require masks for students and staff, and monitor that everyone remains six (6) feet apart at all times."



6 feet

