



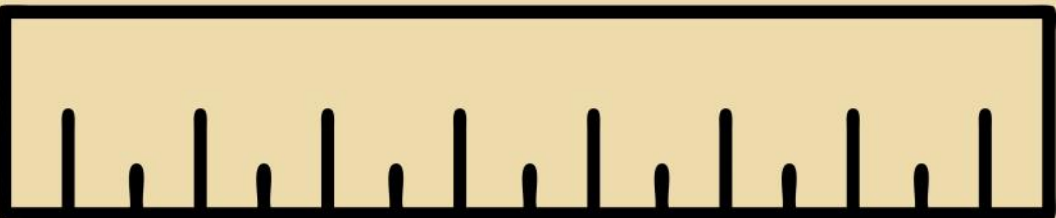
PD

CATALOG

2022.23

MEASURE WHAT MATTERS

USING DATA TO MEET STUDENT NEEDS



WHO WE ARE + WHO WE SERVE

The Northwest Ohio ESC is 1 of 51 educational service centers across Ohio. We exist to serve educators in the Northwest corner of the state -- **Defiance, Fulton, Henry and Williams** counties. Our focus, as always, is on supporting districts -- *supporting you*. We provide high quality, research-based, job-embedded PD designed to uplift educator experience and expertise.

Please do not hesitate to contact one of our consultants or our Professional Development Office with questions, ideas or concerns.

HOW TO REGISTER

Register online at nwoesc.org/ProfessionalDevelopment.aspx or -- if viewing electronically -- use the hyperlinks in this catalog. Registration is required to gain access to all training sessions and to receive a Certificate of Attendance. We continually add trainings, so check [our website](#) to keep most up to date.

HOW IT WORKS

NWOESC will make every effort to hold events as scheduled, however dates, times and methods of delivery are subject to change. Whenever possible, changes or cancellations will be posted to the NWOESC events calendar online and an email with the event status sent to registrants within at least one week of the event. All events in this brochure are scheduled to be held in-person at the Northwest Ohio ESC, unless otherwise indicated.

EARN COLLEGE CREDIT

College credit is available for \$185/credit through Ashland University. Participants must attend 12.5 hours per on-credit and receipt of a grade is required. Choose to register for 1-3 hours of credit. Registration runs Sept. 1 to June 30.



[check out our team! > > >](#)

OUR TEAM



ANDY HUNTER

Director of Curriculum,
Instruction & PD

ahunter@nwoesc.org



MIKE ALTMAN

Math Education
Consultant

mialtman@nwoesc.org



HEIDI BELL

Director of Student Services
Northeastern Local

hbelle@nwoesc.org



ASHLEY ENSIGN

Gifted & Gen Ed
Consultant

aensign@nwoesc.org



KALLIE GENSLER

Gifted & Gen Ed
Consultant

kgensler@nwoesc.org



DOROTHY LAMBERT

Literacy Instructional Coach

dlambert@nwoesc.org



SALLY KOVAR

Gifted & Gen Ed
Consultant

skovar@nwoesc.org



ALISON LUDERMAN

Director of Student Services
Patrick Henry Local

aluderman@nwoesc.org



JANE MYERS

Gifted & Gen Ed
Consultant

jmyers@nwoesc.org



STACEY PARRISH

Gifted & Gen Ed
Consultant

sparrish@nwoesc.org



BRENT SANEHOLTZ

Student Services Coordinator
North Central Local

bsaneholtz@nwoesc.org

Visit nwoesc.org/OurServices.aspx for a full list of our services. Contact us directly if you would like to discuss professional development for your school/district.

ADMINISTRATIVE SERIES

NwOESC Administrators' Conference
August 6

All County Superintendent Meetings
Second Tuesday of each month (Sept–June)

County-wide Principals' Meetings
As determined by county.

All County Principals' Meetings

October 4	Elementary High School	9:00 AM–11:00 AM 1:00 PM–3:00 PM
October 12	Middle School	9:00 AM–10:30 AM
February 21	Elementary High School	1:00 PM–3:00 PM 9:00 AM–11:00 AM
February 22	Middle School	9:00 AM–10:30 AM

[Administrators' Brunch & Learns with Joe Sanfelippo](#)

October 6	9:00 AM–11:00 AM
November 3	9:00 AM–11:00 AM
January 5	9:00 AM–11:00 AM
April 6	9:00 AM–11:00 AM



[Curriculum Directors' Meetings](#)

October 12	10:30 AM–12:00 PM
December 7	10:30 AM–12:00 PM
January 4	10:30 AM–12:00 PM

CAREER RESOURCES

[Dream Center: Uncover Your Purpose, Unleash Your Potential](#)

October 19 9:00 AM–3:00 PM

Participants will walk away with a sophisticated, yet simple tool that will further enable them to “Ignite for the ONE.”

Facilitated by Mike Remer, Career Coach, NwOESC/Swanton



DIGGING INTO DATA SERIES

For questions on the content of this series contact [Angela Osborne](#) or [Marty Schloegl](#), SSTR1 Consultants. Registration questions can be addressed to Lisa Jenkins at esclewlj@sstr1.org.

Interpreting and Applying EVAAS Data

December 8 8:30 AM–11:30 AM

Maximizing Instructional Capacity

January 26 1:00 PM–4:00 PM

Exploring Advanced Reports

March 2 1:00 PM–4:00 PM

ENGLISH LANGUAGE LEARNERS

Supporting English Language Learners

October 21 8:30 AM–3:30 PM

Learn how to support English language learners through various strategies that will improve student comprehension and literacy.

Facilitated by Jessica Burchett, ESL Coordinator/Teacher at Marion City Schools

Best Practices for Teaching ELA English Learners

November 4 8:30 AM–11:00 AM

In this session, we will discuss the advantages and challenges of teaching ELA to English learners (ELs) and other diverse populations. We will focus on addressing language acquisition and ELA content simultaneously. We will consider best practices in each area of reading, writing, listening, and speaking.

Facilitated by Sara Levitt, SJL Educational Consultants

Best Practices for Teaching Social Studies English Learners

November 4 1:00 PM–3:30 PM

In this session, we will discuss the advantages and challenges of teaching Social Studies to English learners (ELs) and other diverse populations. We will explore storytelling, authentic resources, and using simulations to create immersive learning experiences for students. We look through a variety of strategies and learning activities that are interactive and immersive.

Facilitated by Sara Levitt, SJL Educational Consultants

Best Practices for Teaching Math to English Learners

February 15 8:30 AM–11:00 AM

In this session, we will discuss the advantages and challenges of teaching Math to English learners (ELs) and other diverse populations. We will focus on linguistic, conceptual, and procedural knowledge as we explore a class structure that facilitates differentiation.

Facilitated by Sara Levitt, SJL Educational Consultants

Best Practices for Teaching Science to English Learners

February 15 1:00 PM–3:30 PM

In this session, we will discuss the advantages and challenges of teaching Science to English learners (ELs) and other diverse populations. We will walk through demonstrations, experiments, and how to differentiate lab reports. There will be time to explore content-specific resources. We will also consider ways to communicate with and engage the families of ELs.

Facilitated by Sara Levitt, SJL Educational Consultants

IEP TRAININGS

[New Teacher IEP Training](#)

August 10 8:30 AM—3:00 PM

[IEP Refresher Training K-12](#)

September 14 8:00 AM—11:00 AM


[IEP Refresher Training for Preschool Teachers](#)

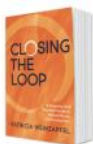
September 26 8:00 AM—11:00 AM

[IEP Refresher Training for Preschool Teachers](#)

September 26 12:00 PM—3:00 PM

ONLINE BOOK STUDIES

 Gain professional development through a convenient, online learning environment — from the comfort of your own space, in your own time, with no substitute plans to prepare. These studies qualify participants for both general education and gifted hours.



[Closing the Loop](#)

Begins October 4th

Online/Self-Paced

OTES, OPES, OSES

[OTES 2.0 New Evaluator Training](#)

Aug 31—Sept 2 8:30 AM—4:00 PM

[OPES New Evaluator Training](#)

Sept 8—Sept 9 8:30 AM—4:00 PM

[OPES Bridge Training](#)

September 16 8:30 AM—4:00 PM

[OSES Training](#)

October 5 8:30 AM—4:00 PM

REPORT CARD OVERVIEW

[Report Card Overview](#)

September 1 12:30 PM—3:00 PM

Facilitated by Marianne Mottley, Ohio Department of Education

[Understanding the New Report Card—Virtual Sessions](#)

Facilitated by Angela Osborne and Marty Schloegle, SSTRI Consultants

September 13 9:30 AM—12:00 PM

September 13 1:00 PM—4:00 PM

October 6 9:30 AM—12:00 PM

October 6 1:00 PM—4:00 PM

SCHOOL-HOME COMMUNICATIONS

The Words We Use: School to Home Communications

November 8 10:00 AM—12:00 PM

What we say matters. How we say it matters, too. This workshop will help school staff and administrators bridge the gap between schools and families and build stronger relationships with parents by improving school-home communication.

Facilitated by Patricia Weinzapfel, Evansville Vanderburgh School Corporation

**Fall 2022 online book study available covering Patricia Weinzapfel's latest book, 'Closing the Loop.' See pg. 6.*



SUCCESSFUL PROGRAM BUILDING

Join thriving area district leaders of co-curricular programs to hear how their successful programs operate. They will discuss organization, climate, culture, expectations and share how they run their team or program. Learn how to jumpstart your program from the ground-up; or enhance one that has already been running for years. These sessions will have relevancy and applicable overlap no matter what you teach.

Facilitated by:

Lucas Smith, Head Football Coach, Hicksville Schools

Corey Kreinbrink, Varsity Girls Basketball Coach, Napoleon Schools

Chris Lyons, Director of Bands, Evergreen Schools

Building & Design of a Successful Program

October 13 9:30 AM—2:30 PM

SCHOOL PSYCH COLLABORATION SERIES

Participants will collaborate, share resources and experiences with practicing School Psychologists; they will be able to implement and update daily practice with new ideas and procedures.

Dyslexia

October 12 1:00 PM—3:00 PM

Functional Behavior Assessments and Behavior Intervention Plans

December 7 1:00 PM—3:00 PM

How to Support Students Regardless of Acronyms

March 1 1:00 PM—3:00 PM

A Year in Review

May 31 1:00 PM—3:00 PM

SEL & SCHOOL CLIMATE



School Climate with Dr. Katie Peters

October 17 8:30 AM–11:30 AM

Dr. Peters will lead an interactive engagement, focused on improving overall staff wellness and building positive workplace culture.

Facilitated by Dr. Katie Peters, Teachers, Speaker, Author and Blogger

Introduction to Sources of Strength: An ODE (HB 123) Approved Evidence-Based Suicide Awareness & Prevention and Violence Prevention Program

November 10 9:00 AM–11:30 AM

Sources of Strength is a strength-based program focusing on suicide prevention but also impacts substance abuse and violence. The 5-12 grade program is based on a relational connections model that uses

teams of Peer Leaders mentored by Adult Advisors to change peer social norms about help seeking and encourages students to individually assess and develop strengths in their life. The K-6 program is a curriculum that incorporates SEL content, but includes a robust focus on mental health and proactive prevention for elementary students.

Laura Kamp, NWOESC School Climate Facilitator

Understanding & Managing Trauma in Children with Michelle Kannal

January 18 8:30 AM–3:30 PM

This comprehensive training can help school districts better understand how students experience traumatic events, how to help them through challenging times, and learn to manage self-care techniques while working with this difficult population.

Facilitated by Michelle Kannal, School Social Worker/Care Coordinator at Montpelier Exempted Village Schools

Living SEL Beyond Curriculum: Lesson Plans are Not Enough

February 22 9:00 AM–11:30 AM

The Collaborative for Academic, Social, and Emotional Learning, (CASEL) tells us that SEL is "the process through which all people acquire knowledge and apply the skills" to thrive and contribute to our world. Learn how PBIS and PAX can take any SEL curriculum, or lack thereof, beyond knowledge, or lack thereof, and make it the ether of the classroom and school. It is not something else we have to do, it is how we do things.

Laura Kamp, NWOESC School Climate Facilitator

SCHOOL CLIMATE FACILITATOR SERVICES

2022-2023

The NwOESC School Climate Facilitators support districts and schools in building a socially, emotionally, and behaviorally healthy school and a nurturing school community. These nurturing School Climates ultimately increase teacher perceived efficacy, prosocial behavior, school attendance and academic achievement.

Specific training and coaching offered by School Climate Facilitators:

- PBIS: Positive Behavior and Intervention Supports Tiers 1-3
- Other training to support or implement PBIS:
- SWIS: School-Wide Information Systems
- PAX: PAX Good Behavior Game
- SEL: Social Emotional Learning
- Sources of Strength
- TIRS: Trauma Informed and Resilient Schools
- School Climate Facilitators will also help schools assess and integrate other initiatives (e.g. 7 Mindsets and Second Steps) as part of their PBIS framework.

*Most School Climate Facilitator services offered **free of charge** to member school districts. We offer flexibility and customization, using virtual coaching and in-person training at the NwOESC facility or on-site in your building.*

For a full list of services provided, questions and additional support, contact:

Laura Kamp | lkamp@nwoesc.org

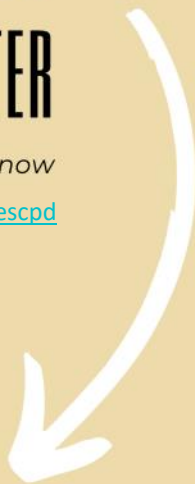
Julie Weber | jweber@nwoesc.org

LET'S GROW TOGETHER

SUBSCRIBE TO OUR PD NEWSLETTER

to be first in-the-know

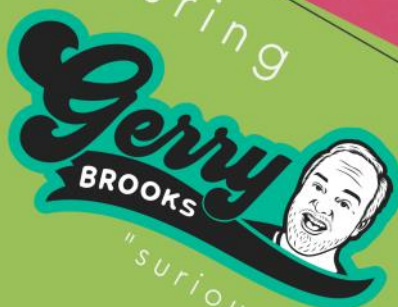
mailchi.mp/a9c4bff60261/nwoescpd





PD PALOOZA!

featuring



"suriously!"



SCAN ME

REGISTER NOW

AUG 2, '22

pdpalooza.mailchimpsites.com

Events by date

AUGUST

August 1
Bus & Van Driver In-Service Training

August 2
PD Palooza

August 5
NWOESC Administrators' Conference

August 31–September 2
OTES 2.0 New Evaluator Training

SEPTEMBER

September 1
Report Card Overview

September 7
OPES Bridge Training

September 8–September 9
OPES New Evaluator Training

September 13
Understanding the New Report Card

September 14
Resident Educator Orientation Make-up

OCTOBER

October 3
Fall Online Book Study Begins

October 4
All County Principals Meetings

October 5
OSES Training

October 6
Leadership Brunch & Learn

October 6
Understanding the New Report Card

October 12
Curriculum Directors' Meeting

October 13
Building+Design of a Successful Program

October 17
School Climate with Katie Peters

October 19
Uncover Your Purpose, Unleash Your Potential

October 21
Supporting English Language Learners

12 Northwest Ohio ESC

NOVEMBER

November 2
Curriculum Directors' Meeting

November 3
Leadership Brunch & Learn

November 4
Best Practices for Teaching ELA to ELL

November 4
Best Practices for Teaching Science to ELL

November 8
The Words We Use: School-Home Communications

November 10
Introduction to Sources of Strength

DECEMBER

December 8
Interpreting and Applying EVAAS Data

JANUARY

January 4
Curriculum Directors' Meeting

January 5
Leadership Brunch & Learn

January 18
SEL with Michelle Kannal

January 26
Maximizing Instructional Capacity

FEBRUARY

February 6
Spring Online Book Study Begins

February 15
Best Practices for Teaching SS to ELL

February 15
Best Practices for Teaching Math to ELL

February 21
All County Principals' Meetings

February 22
Living SEL Beyond Curriculum

MARCH

March 3
Exploring Advanced Reports

APRIL / MAY / JUNE

April 6
Leadership Brunch & Learn

The Fine Print

Event Registration Registration is required to attend NwOESC professional development and receive a Certificate of Attendance. Registration is completed online via our third-party registration site, Local Level Events. Events are not public searchable through the Local Level Events website, so a direct link is required to access registration. In most cases, the link to register will be listed in the NwOESC events calendar. If you have problems registering or to cancel your event registration, please email arepp@nwoesc.org or call (567) 444-4809.

Cost & Eligibility NwOESC professional development workshops are free (unless otherwise stated) to public school districts within Defiance, Fulton, Henry and Williams counties in Ohio. Attendance for staff from non-member districts may be arranged by contacting the Professional Development office directly. Workshops for ODE initiatives follow state guidelines for registration fees.

Parking & Check-in Parking is free. Look for the large clock! Please arrive 10-15 minutes prior to event start time to get settled and check-in

Inclement Weather NwOESC makes every effort to hold events as scheduled, despite the delay or closing of area schools due to weather. In the event of severe inclement weather (typically a Level 2 or Level 3 Snow Emergency in Fulton County) or other emergencies, NwOESC may cancel an event. Events sponsored by other organizations sometimes proceed despite inclement weather. Whenever possible, all cancellations will be posted to the NwOESC website and an email with the event status sent to registrants.

Low Enrollment The NwOESC reserves the right to cancel workshops based on low enrollment. Notification of cancellations will be sent via email to registrants and posted on the NwOESC website. A cancelled session may be replaced with a new session. It is the responsibility of the participants to register for the new session.

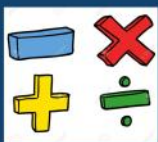
Certificates of Attendance Upon completion of an NwOESC workshop, registrants will be issued a Certificate of Attendance that lists the description and contact hours for that event. The Certificate of Attendance will be sent as a downloadable link with a SurveyMonkey event survey within 24-72 business hours of the event. The NwOESC is an approved CPE (Continuing Professional Education_ credit sponsor with the Accountancy Board of Ohio.

Event Updates Never miss another PD opportunity again by subscribing to our weekly professional development [email newsletter](#). Be sure to follow @NWOESC on Twitter and Facebook.

Math Consultant Services

Foster Sense-Making Spark Curiosity Build Problem Solvers

INSTRUCTION



- Coach Teachers (1-On-1)
- Facilitate Peer Observations
- Select Professional Development



DATA



- Facilitate Data Studies
- Analyze OST Data
- Organize OST Data



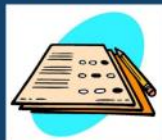
CURRICULUM



- Facilitate Curriculum Adoption
- Dive into the Math Standards
- Explore Vertical Alignment



ASSESSMENT



- Align Assessments
- Design Online Assessments
- Implement Formative Assessment



Contact: Mike Altman
mialtman@nwoesc.org
567.444.4800 ext. 4632

Literacy Consultant Services



- Providing guidance, support and resources to meet the challenges of new dyslexia and literacy legislation
- Improving literacy instruction for our four county area schools
- Helping educators understand and meet Ohio literacy standards

For questions, support or to request services in your district, contact:



Dorothy Lambert
dlambert@nwoesc.org
567.444.4800 ext. 4633



205 Nolan Pkwy.
Archbold, OH 43502
p 567.444.4800
f 567.444.4802

VISIT US ONLINE



nwoesc.org



@nwoesc



@nwoesc



Receive PD
updates to
your inbox

