

DESTINATION -1-1 PLAN

SECTION I

BOND REFERENDUM FUNDED PROJECTS
COMPLETION DATE: AUGUST 2022

SECTION II

SCHOOL/PRINCIPAL CAPITAL PROJECTS
CAPITAL FUNDED PROJECTS
TBD COMPLETION DATE*

SECTION III

2022 AND BEYOND BUILDING PROJECTS
CAPITAL FUNDED PROJECTS
TBD COMPLETION DATE*

***SEVERAL PROJECTS WILL BE COMPLETED USING COST SAVINGS THROUGH THE REFERENDUM BOND PROCEEDS.**

DESTINATION BUILDING PLAN

RENOVATED MIDDLE SCHOOL

PHASE 1: EXISTING
ROOF REPLACEMENT
\$1.1 MILLION

PHASE 2: RENOVATION
\$1 MILLION

- ☒ WALLS
 - FIXTURES, FURNITURE & EQUIPMENT
- ☒ GYM/CAFE HEAT & AIR
 - PAINT
 - FLOORING
 - SAFETY UPGRADES
 - 21ST CENTURY LEARNING ENVIRONMENTS

PHASE 3: NEW 14,500 SQ FT
CLASSROOM WING ADDITION
\$6.8 MILLION

- ☒ SITE WORK
- ☒ SAFETY UPGRADES
 - PARKING AND DRIVES

PHASE 4: NEW GYM/BAND
\$9.5 MILLION

ESTIMATED TOTAL:
\$18.4 MILLION

PROJECTED COMPLETION DATE:
AUGUST 2021

CANNONS ELEMENTARY

PHASE 1: EXISTING ROOF
RENOVATED
\$750,000

PHASE 2: RENOVATION
\$800,000

- FIXTURES, FURNITURE & EQUIPMENT
- GYM/CAFE/MEDIA CENTER HEAT & AIR
- PAINT
- FLOORING
- ☒ PLAYGROUND
 - SAFETY UPGRADES
 - 21ST CENTURY LEARNING ENVIRONMENTS

ESTIMATED TOTAL:
\$1.5 MILLION

PROJECTED COMPLETION DATE:
AUGUST 2022

COWPENS ELEMENTARY

PHASE 1: EXISTING ROOF
RENOVATION
\$1 MILLION

PHASE 2: RENOVATION
\$2 MILLION

- FIXTURES, FURNITURE & EQUIPMENT
- PAVING
- GYM/CAFE HEAT & AIR
- PAINT
- FLOORING
- SAFETY UPGRADES
- 21ST CENTURY LEARNING ENVIRONMENTS

ESTIMATED TOTAL:
\$3 MILLION

PROJECTED COMPLETION DATE:
AUGUST 2022

PACOLET ELEMENTARY

PHASE 1: EXISTING ROOF
RENOVATION
\$1 MILLION

PHASE 2: RENOVATION
\$2 MILLION

- FIXTURES, FURNITURE & EQUIPMENT
- GYM/CAFE HEAT & AIR
- PAINT
- FLOORING
- PAVING
- PLAYGROUND
- SAFETY UPGRADES
- 21ST CENTURY LEARNING ENVIRONMENTS

ESTIMATED TOTAL:
\$3 MILLION

PROJECTED COMPLETION DATE:
AUGUST 2022

BROOME HIGH SCHOOL

PHASE 1: EXISTING ROOF
RENOVATION
\$600,000

PHASE 2: RENOVATION
\$3 MILLION

- ROOF DRAINAGE
- FIXTURES, FURNITURE & EQUIPMENT
- SAFETY UPGRADES
- PAVING
- RESURFACE TRACK
- LOCKER ROOM UPGRADES
- DRAINAGE/GRADING
- COURTYARD RENOVATIONS
- LED LIGHTING
- 21ST CENTURY LEARNING ENVIRONMENTS

ESTIMATED TOTAL:
\$3.6 MILLION

PROJECTED COMPLETION DATE:
AUGUST 2022

ESTIMATED TOTAL= \$29.5 MILLION
TOTAL EXPENDITURES AS OF 1/19/2021: \$7,430,710.29

WANT TO SEE WHAT'S BEEN COMPLETED SO FAR?
LOOK FOR THE ☒

DESTINATION 3-1-1 WISHLISTS

CANNONS ELEMENTARY

- ELECTRONIC SIGN: SPRING 2021
- WALKIE TALKIES: DECEMBER 2020
- NEW GYM FLOOR: SUMMER 2021
- NEW & IMPROVED WALKING TRACK: SUMMER 2021
- OUTDOOR BASKETBALL COURT/PERMANENT GAME COURT (4 SQUARE, PICKLEBALL, ETC.): SUMMER 2021

COWPENS ELEMENTARY

- RECONFIGURE KINDERGARTEN SUITE: SUMMER 2021
- RENOVATE BASKETBALL COURT: SUMMER 2021
- NEW SIGNAGE: SUMMER 2022
- NEW ENTRANCE/EXIT: TBD

PACOLET ELEMENTARY

- EARLY CHILDHOOD LEARNING CENTER: TBD
- RESURFACED BASKETBALL COURT: TBD
- ADDITIONAL PARKING AREA: TBD

BROOME HIGH SCHOOL

- 21ST CENTURY LEARNING LABS: SUMMER 2022
- UPDATE AND REMODEL THE FRONT LOBBY, GYM LOBBY AND FRONT OFFICE: TBD
- ADD SIGNAGE FOR ALL ENTRANCES AND ATHLETIC FACILITIES: SUMMER 2022
- REPLACE AND UPDATE CAFETERIA FURNITURE AND GYM LOBBY FURNITURE: TBD
- REMOVE SECTIONS OF LOCKERS THROUGHOUT THE BUILDING TO CREATE FLEXIBLE LEARNING SPACES: SUMMER 2021

BROOME ATHLETICS

- LOCKER ROOM UPDATES: SUMMER 2022
- FIELDHOUSE UPDATES: TBD
- COVERED BATTING CAGES: SUMMER 2022
- WEIGHT ROOM UPDATES: TBD

DANIEL MORGAN TECHNOLOGY CENTER

- ADA COMPLAINT FRONT ENTRANCE RAMP AND ADA COMPLAINT RAMPS IN 3 ROOMS: TBD
- BARBERING CLASSROOM/LAB: SUMMER 2022
- OFFICE SPACE AND CONFERENCE ROOM: TBD
- MULTI-PURPOSE ROOM UPGRADES: SUMMER 2022
- UPDATED DMTC LOGO SIGNAGE/WORDING ON THE SIDE OF THE BUILDING: SUMMER 2022

DESTINATION -1-1 PLAN

2022 AND BEYOND PROJECTS

DISTRICT 3 FUTURE IMPROVEMENTS



1. Gettys D. Broome High School



2. Bus Lot & Bus Office at District Office



3. Cannons Elementary School



4. Cowpens Elementary School



5. Pacolet Elementary School

GETTYS D. BROOME HIGH SCHOOL EXISTING SITE PLAN



GETTYS D. BROOME HIGH SCHOOL – EXISTING MAIN & AUDITORIUM ENTRIES

PROJECT GOALS

- Create a Main Entrance that Unifies the Design with the D3 Community Auditorium
- Enhance the Sports Area Entrance for all Users and Visitors
- Improve and Update the Student Courtyard
- Add Campus Parking at Area next to Practice Field Including Retaining Wall
- Add Parking Between the Baseball and Softball Facilities for Various Uses



GETTYS D. BROOME HIGH SCHOOL – PROPOSED NEW MAIN ENTRY



PROJECT GOALS

- Create a Main Entrance that Unifies the Design with the D3 Community Auditorium
- Enhance the Sports Area Entrance for all Users and Visitors
- Improve and Update the Student Courtyard
- Add Campus Parking at Area next to Practice Field Including Retaining Wall
- Add Parking Between the Baseball and Softball Facilities for Various Uses

GETTYS D. BROOME HIGH SCHOOL – PROPOSED NEW MAIN ENTRY WITH AUDITORIUM





PROJECT GOALS

- Create a Main Entrance that Unifies the Design with the D3 Community Auditorium
- Enhance the Sports Area Entrance for all Users and Visitors
- Improve and Update the Student Courtyard
- Add Campus Parking at Area next to Practice Field Including Retaining Wall
- Add Parking Between the Baseball and Softball Facilities for Various Uses



PROJECT GOALS

- Create a Main Entrance that Unifies the Design with the D3 Community Auditorium
- Enhance the Sports Area Entrance for all Users and Visitors
- Improve and Update the Student Courtyard
- Add Campus Parking at Area next to Practice Field Including Retaining Wall
- Add Parking Between the Baseball and Softball Facilities for Various Uses

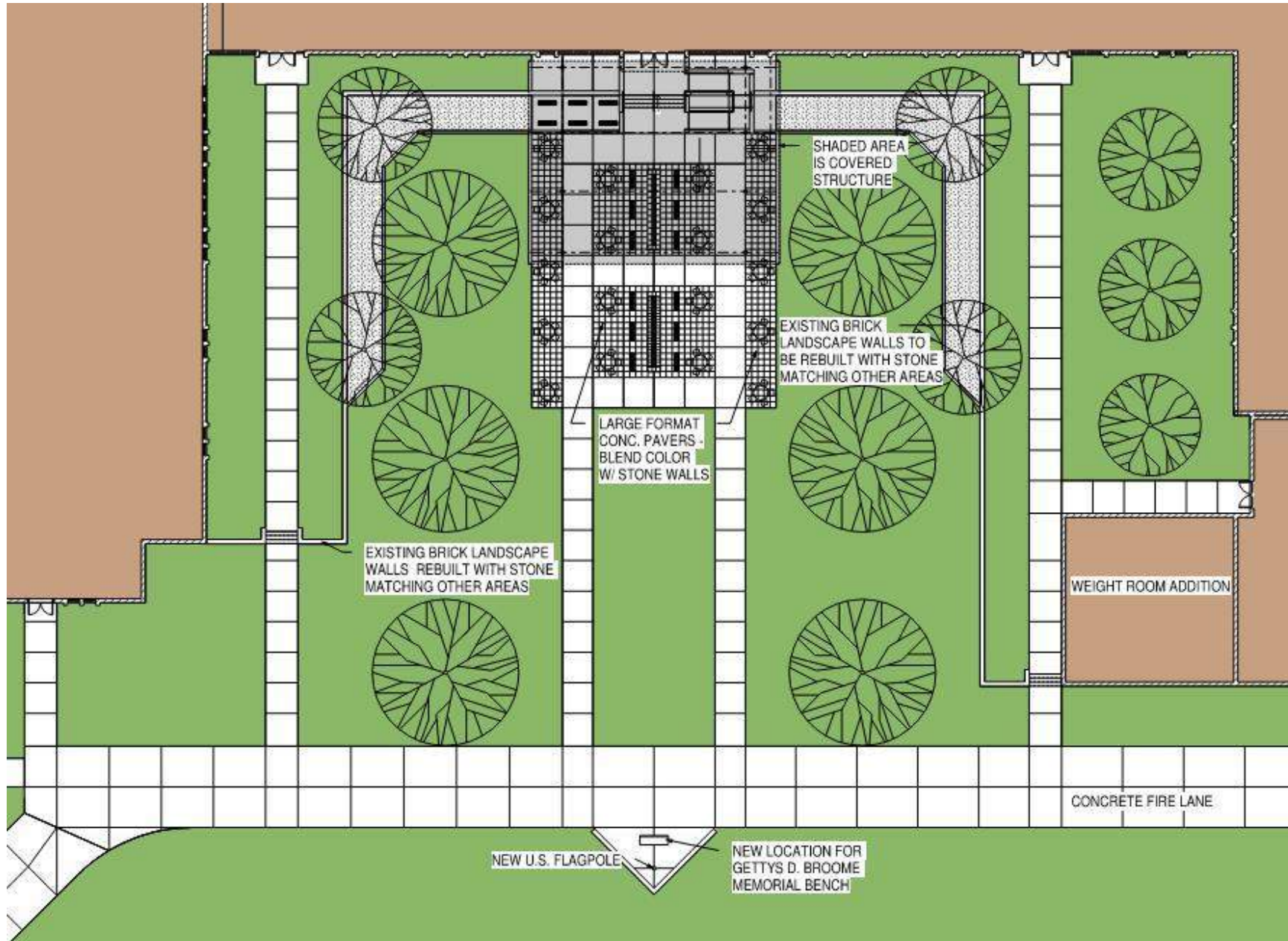
GETTYS D. BROOME HIGH SCHOOL – EXISTING STUDENT COURTYARD

PROJECT GOALS

- Create a Main Entrance that Unifies the Design with the D3 Community Auditorium
- Enhance the Sports Area Entrance for all Users and Visitors
- Improve and Update the Student Courtyard
- Add Campus Parking at Area next to Practice Field Including Retaining Wall
- Add Parking Between the Baseball and Softball Facilities for Various Uses



GETTYS D. BROOME HIGH SCHOOL – PROPOSED STUDENT COURTYARD PLAN



PROJECT GOALS

- Create a Main Entrance that Unifies the Design with the D3 Community Auditorium
- Enhance the Sports Area Entrance for all Users and Visitors
- Improve and Update the Student Courtyard
- Add Campus Parking at Area next to Practice Field Including Retaining Wall
- Add Parking Between the Baseball and Softball Facilities for Various Uses

GETTYS D. BROOME HIGH SCHOOL – PROPOSED STUDENT COURTYARD RENDERINGS

PROJECT GOALS

- Create a Main Entrance that Unifies the Design with the D3 Community Auditorium
- Enhance the Sports Area Entrance for all Users and Visitors
- Improve and Update the Student Courtyard
- Add Campus Parking at Area next to Practice Field Including Retaining Wall
- Add Parking Between the Baseball and Softball Facilities for Various Uses



GETTYS D. BROOME HIGH SCHOOL – EXISTING CAMPUS PLAN & PARKING

PROJECT GOALS

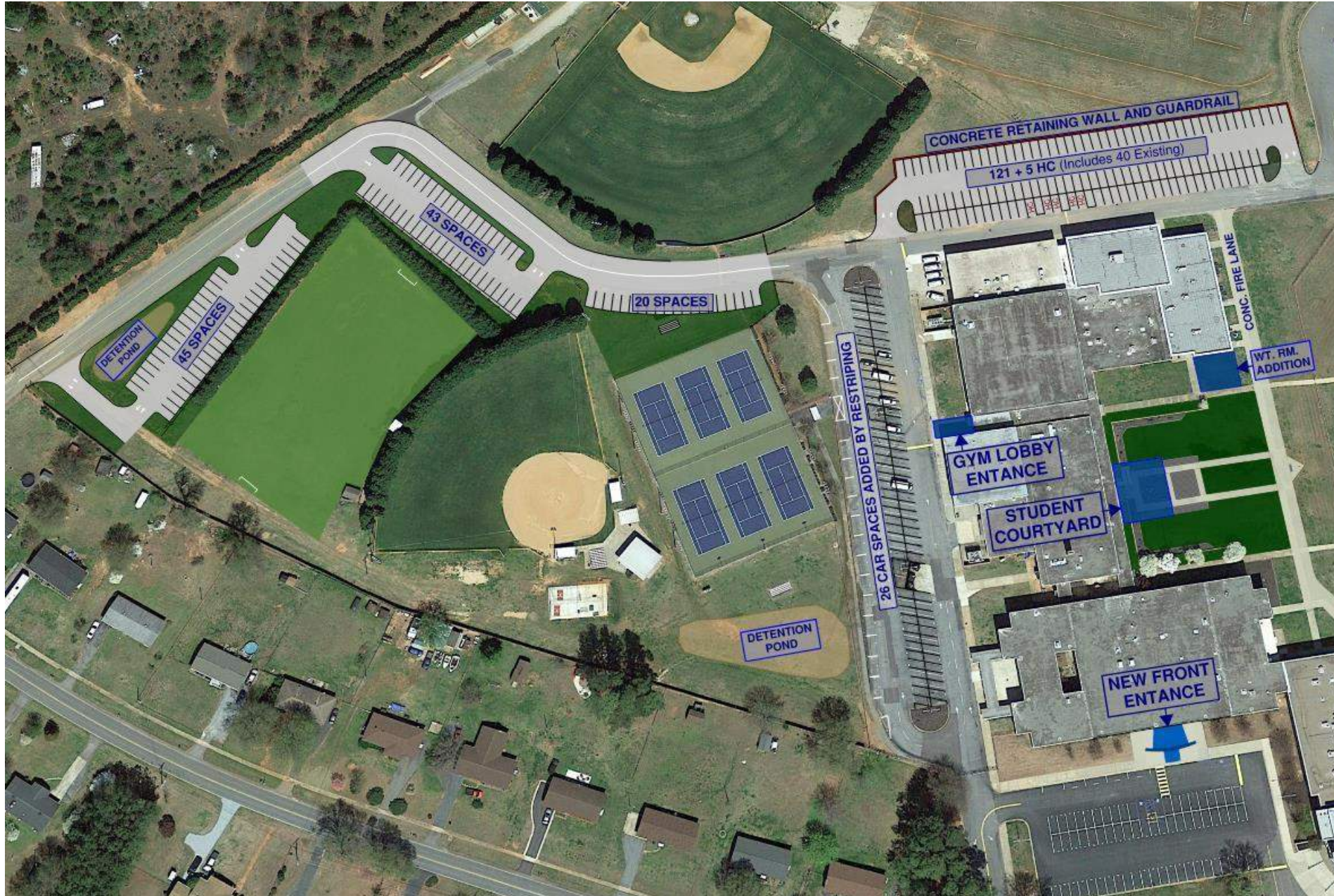
- Create a Main Entrance that Unifies the Design with the D3 Community Auditorium
- Enhance the Sports Area Entrance for all Users and Visitors
- Improve and Update the Student Courtyard
- Add Campus Parking at Area next to Practice Field Including Retaining Wall
- Add Parking Between the Baseball and Softball Facilities for Various Uses



GETTYS D. BROOME HIGH SCHOOL – PROPOSED CAMPUS PLAN & PARKING

PROJECT GOALS

- Create a Main Entrance that Unifies the Design with the D3 Community Auditorium
- Enhance the Sports Area Entrance for all Users and Visitors
- Improve and Update the Student Courtyard
- Add Campus Parking at Area next to Practice Field Including Retaining Wall
- Add Parking Between the Baseball and Softball Facilities for Various Uses
- This Plan Shows an Addition of 220 Parking Spaces



NEW BUS LOT & BUS OFFICE AT DISTRICT OFFICE



NEW BUS LOT & BUS OFFICE AT DISTRICT OFFICE – EXISTING SITE



PROJECT GOALS

- Build Bus Parking Lot Large Enough to Park all the District's School and Activity Vehicles
- To Allow More Space for the Buses, Build new Car Parking Lot in Front of the District Office, Connected to Both Driveways
- Build New Bus Office and Meeting Space Addition to the Existing District Office

NEW BUS LOT & BUS OFFICE AT DISTRICT OFFICE – PROPOSED SITE PLAN



PROJECT GOALS

- Build Bus Parking Lot Large Enough to Park all the District's School and Activity Vehicles
- To Allow More Space for the Buses, Build new Car Parking Lot in Front of the District Office, Connected to Both Driveways
- Build New Bus Office and Meeting Space Addition to the Existing District Office



PROJECT GOALS

- Add Eight Classrooms
- Avoid Existing School disruption during Construction, do as Much as Possible During the Summer

CANNONS ELEMENTARY SCHOOL – PROPOSED CLASSROOM ADDITION



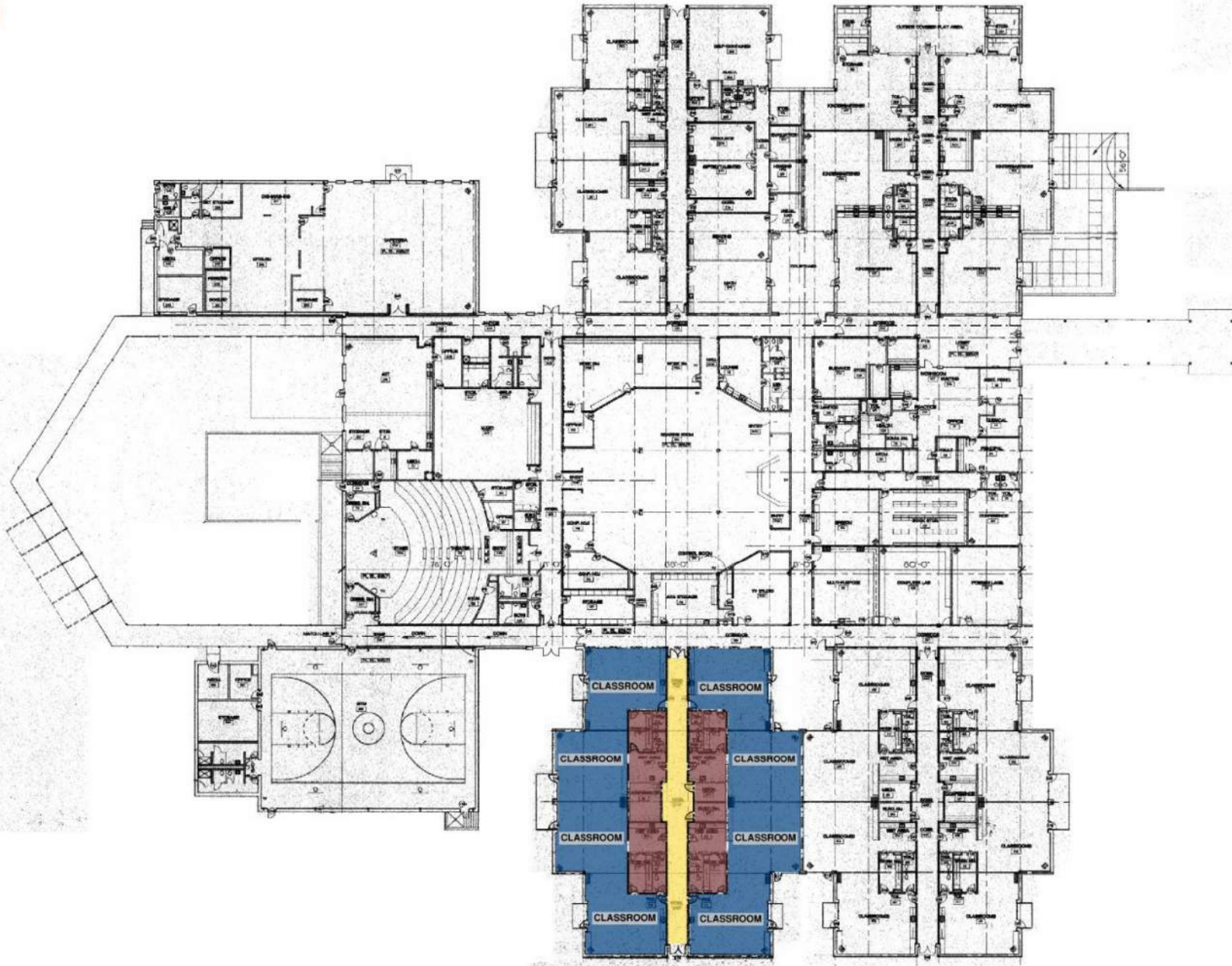
PROJECT GOALS

- Add Eight Classrooms
- Avoid Existing School disruption during Construction, do as Much as Possible During the Summer

CANNONS ELEMENTARY SCHOOL – FLOOR PLAN WITH ADDITION

PROJECT GOALS

- Add Eight Classrooms
- Avoid Existing School disruption during Construction, do as Much as Possible During the Summer



COWPENS ELEMENTARY SCHOOL – EXISTING SITE PLAN



PROJECT GOALS

- Provide Adequate Stack Space at Car Loop
- Increase Parking Spaces
- Additional Canopies for More Loading Areas
- Move Bus Loop Parking Spaces to Within Loop for Safety

COWPENS ELEMENTARY SCHOOL – PROPOSED SITE PLAN

PROJECT GOALS

- Provide Adequate Stack Space at Car Loop
- Increase Parking Spaces
- Additional Canopies for More Loading Areas
- Move Parking Spaces on Bus Loop to Within Loop for Safety



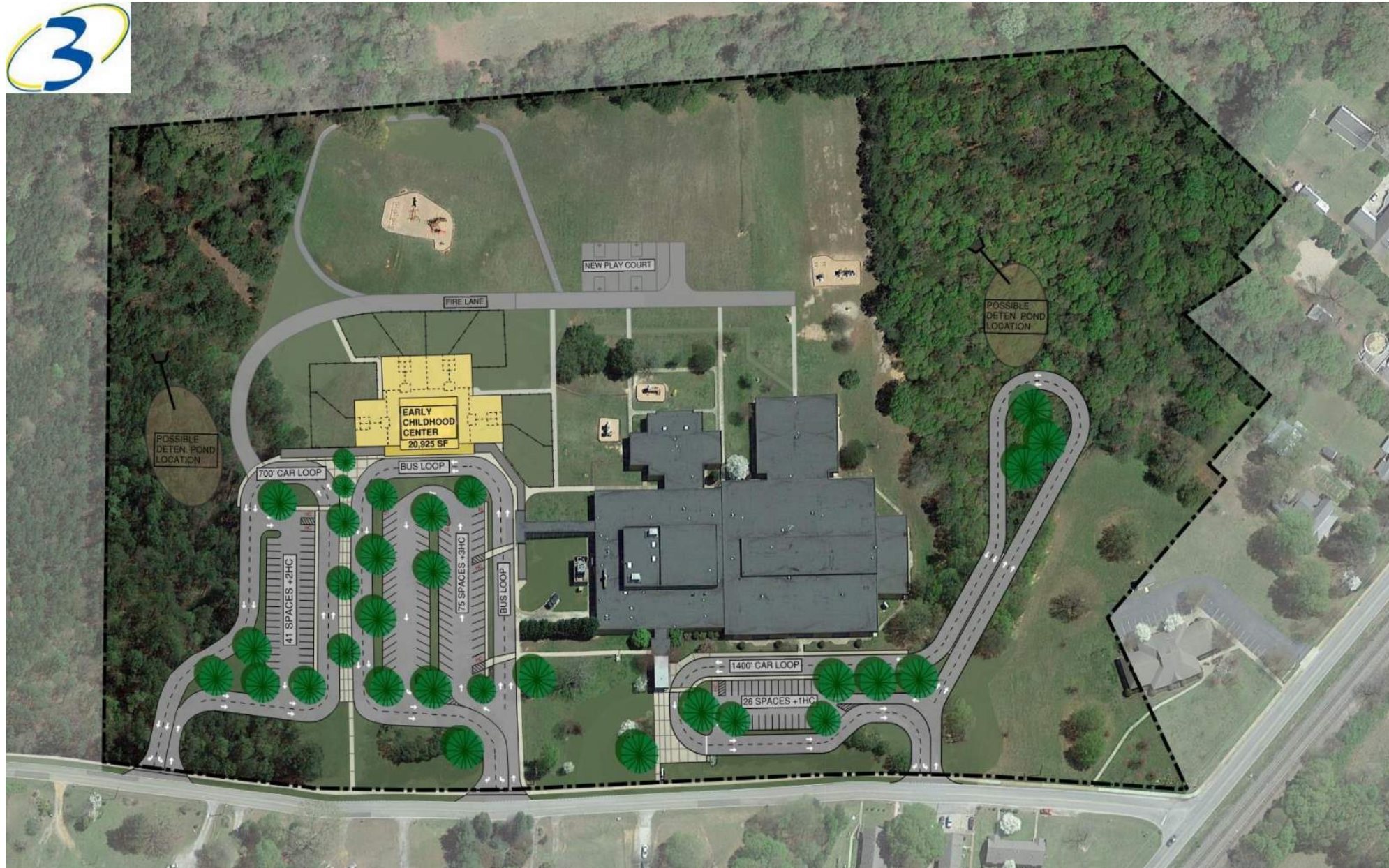
EARLY CHILDHOOD CENTER AT PACOLET ELEMENTARY SCHOOL – EXISTING SITE



PROJECT GOALS

- Construct Free Standing Early Childhood Center Close Enough to Existing School to Share the Food Prep, also Include Outdoor Play Space from Each Classroom
- Reconstruct the Current Car Loading Loop and Parking Spaces into a Shared Bus Loop for Both Schools.
- Build a new Car Loop and Parking Spaces for the new Early Childhood Center
- Demo the Current Bus Loop in Front of the Existing School and Build New Longer Car Loop to Serve the Elementary School

EARLY CHILDHOOD CENTER AT PACOLET ELEMENTARY SCHOOL – PROPOSED SITE



PROJECT GOALS

- Construct Free Standing Early Childhood Center Close Enough to Existing School to Share the Food Prep, also Include Outdoor Play Space from Each Classroom
- Reconstruct the Current Car Loading Loop and Parking Spaces into a Shared Bus Loop for Both Schools.
- Build a new Car Loop and Parking Spaces for the new Early Childhood Center
- Demo the Current Bus Loop in Front of the Existing School and Build New Longer Car Loop to Serve the Elementary School



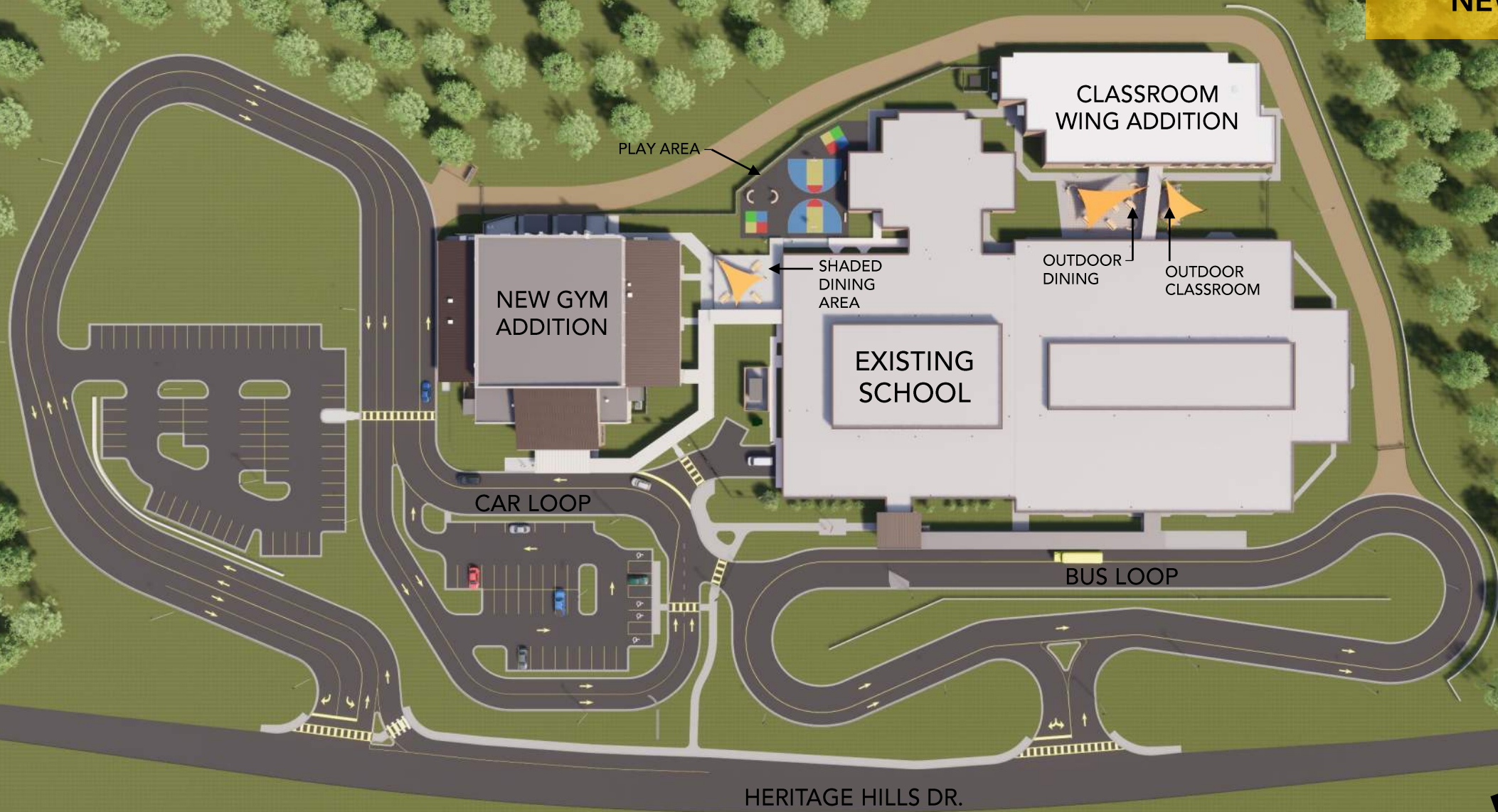
SPARTANBURG COUNTY SCHOOL DISTRICT THREE

ALL IN. EVERY CHILD, EVERY DAY, WHATEVER IT TAKES!



mcmillan | pazdan | smith
ARCHITECTURE

NEW SITE PLAN

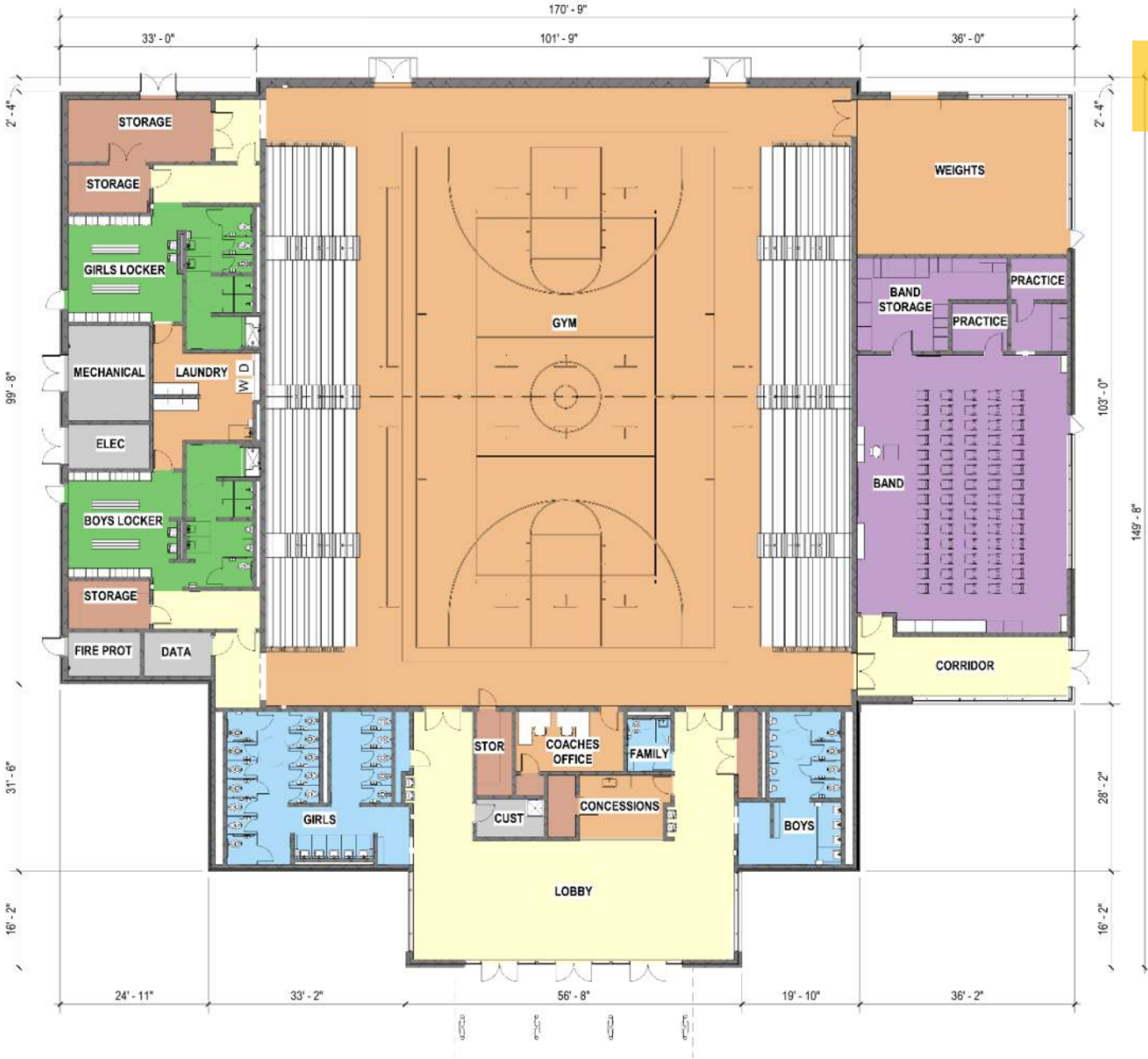


ROOM LIST		
DEPARTMENT	ROOM NAME	NET AREA
CIRCULATION	CORRIDOR	220 SF
CIRCULATION	CORRIDOR	220 SF
CIRCULATION	CORRIDOR	114 SF
CIRCULATION	CORRIDOR	114 SF
CIRCULATION	CORRIDOR	373 SF
CIRCULATION	LOBBY	1107 SF
CIRCULATION	VESTIBULE	78 SF
CIRCULATION	VESTIBULE	96 SF
GYM	COACHES OFFICE	180 SF
GYM	CONCESSIONS	152 SF
GYM	GYM	10235 SF
GYM	LAUNDRY	283 SF
GYM	WEIGHTS	919 SF
LOCKER ROOMS	BOYS LOCKER	344 SF
LOCKER ROOMS	GIRLS LOCKER	346 SF
LOCKER ROOMS	TOILETS/ SHOWERS	262 SF
LOCKER ROOMS	TOILETS/SHOWERS	263 SF
MUSIC	BAND	1627 SF
MUSIC	BAND STORAGE	310 SF
MUSIC	INST REPAIR	75 SF
MUSIC	PRACTICE	65 SF
MUSIC	PRACTICE	75 SF
RESTROOMS	BOYS	355 SF
RESTROOMS	CHASE	29 SF
RESTROOMS	FAMILY	65 SF
RESTROOMS	GIRLS	680 SF
STORAGE	CLOS	16 SF
STORAGE	STOR	84 SF
STORAGE	STOR	48 SF
STORAGE	STOR	48 SF
STORAGE	STORAGE	109 SF
STORAGE	STORAGE	109 SF
STORAGE	STORAGE	249 SF
UTILITY	CUST	72 SF
UTILITY	DATA	83 SF
UTILITY	ELEC	100 SF
UTILITY	FIRE PROT	89 SF
UTILITY	MECHANICAL	219 SF
Grand total: 38		19810 SF

GROSS BUILDING AREA: 20,900 GSF

DEPT LIST	
DEPARTMENT	NET AREA
CIRCULATION	2322 SF
GYM	11769 SF
LOCKER ROOMS	1214 SF
MUSIC	2152 SF
RESTROOMS	1128 SF
STORAGE	663 SF
UTILITY	562 SF
Grand total	19810 SF

DEPARTMENT LEGEND	
<div></div> CIRCULATION	<div></div> RESTROOMS
<div></div> GYM	<div></div> STORAGE
<div></div> LOCKER ROOMS	<div></div> UTILITY
<div></div> MUSIC	



GYM FLOOR PLAN



RENDERINGS
GYM ADDITION



SPARTANBURG COUNTY SCHOOL DISTRICT THREE
CLIFDALE MIDDLE ADDITIONS



RENDERINGS
GYM ADDITION



SPARTANBURG COUNTY SCHOOL DISTRICT THREE
CLIFDALE MIDDLE ADDITIONS



RENDERINGS
GYM ADDITION



SPARTANBURG COUNTY SCHOOL DISTRICT THREE
CLIFDALE MIDDLE ADDITIONS



RENDERINGS
GYM ADDITION



SPARTANBURG COUNTY SCHOOL DISTRICT THREE
CLIFDALE MIDDLE ADDITIONS



RENDERINGS
PLAY AREA



RENDERINGS
SHADED DINING AREA



RENDERINGS
SHADED DINING AREA



RENDERINGS
OUTDOOR CLASSROOM



RENDERINGS
OUTDOOR CLASSROOM



RENDERINGS
ENTRY RENOVATION

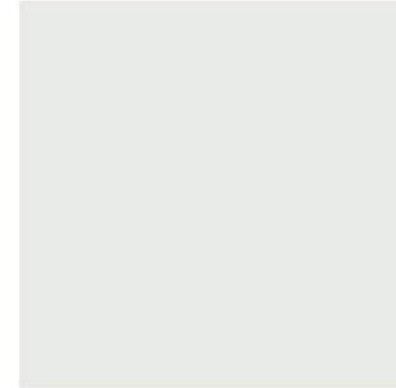


SPARTANBURG COUNTY SCHOOL DISTRICT THREE
CLIFDALE MIDDLE ADDITIONS



RENDERINGS

GYMNASIUM ADDITION



Sherwin Williams
Ceiling Bright White



Fabric Duct

blue PANTONE 7462
(~ RAL 5005)