

Spartanburg School District Three



Average SAT Score in Spartanburg County

2018 Report Card Ratings

- 2 – Excellent Schools
- 3 – Good Schools
- 2 – Average Schools





Spartanburg School District Three

Purpose

“Every student *Future Ready*. Prepared for college, career and personal success.”

Therefore, our schools should be *Future Ready*.



FUTURE READY SCHOOLS – FUTURE READY LEARNING



Spartanburg School District Three

Facility Goals

- Provide **safe and secure** environments for all facilities. Without a foundation in personal safety and security, learning cannot take place.
- Provide learning environments that are **flexible, adaptable and sized appropriately** to increase the longevity and the life of a building.
- Provide school environments that support teacher and student **comfort and choice**.



Spartanburg School District Three

Facility Goals

- Provide instructional spaces that support **student-centered instruction and personalized learning**.
- Provide **equitable** student learning environments across all achievement levels within an individual school and across all schools within the district.
- Develop **21st century learning environments** that encourage leadership and collaboration in students as well as staff.

It's not about what
it is, **it's about what
it can become ...**

– Dr. Seuss, *The Lorax*

”



Bond Referendum Package – **Improvements to Every School**

E L E M E N T A R Y



M I D D L E



H I G H



Future Ready Learning Environments



DAYLIGHTING

ON STANDARD TEST SCORES

+20% Math
+26% Reading



QUIET ACOUSTICS

ON WORD
RECOGNITION

+20% More Words



INDOOR AIR QUALITY

+ Concentration
+ Calculation
+ Memory



ERGONOMIC FURNITURE

DESIGNED FOR MOVEMENT

+ Short Term Memory
+ Learning

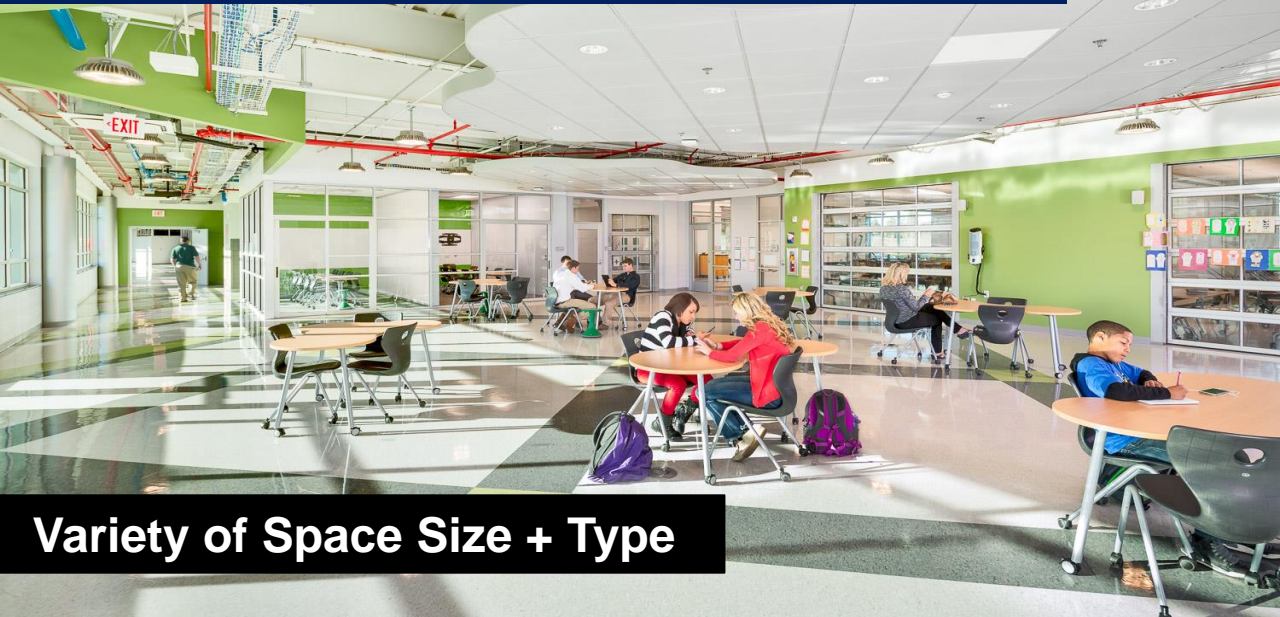


COLOR

FUNCTIONAL SCHEMES REDUCE

- Destructive behavior
- Aggressiveness

21st Century Learning Spaces



Variety of Space Size + Type



Flexibility of Space + Furniture



Outdoor Learning Spaces

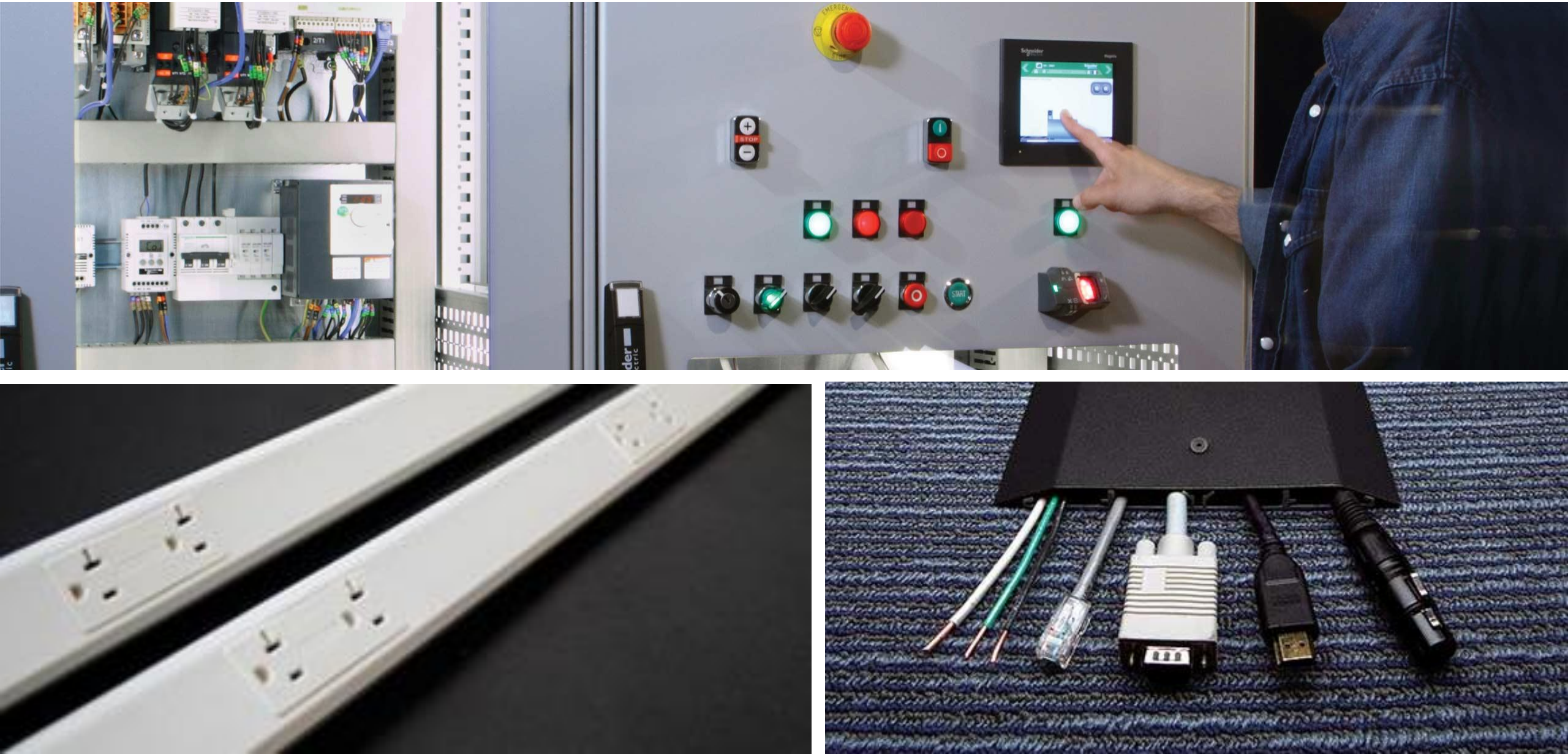
- ▶ Professional Space for Teachers
- ▶ Cross Curriculum Learning
- ▶ Communities of <100 Students
- ▶ 5 to 6 Teachers per Community
- ▶ Student Scheduling
- ▶ Higher Facility Utilization
- ▶ Middle School Concept



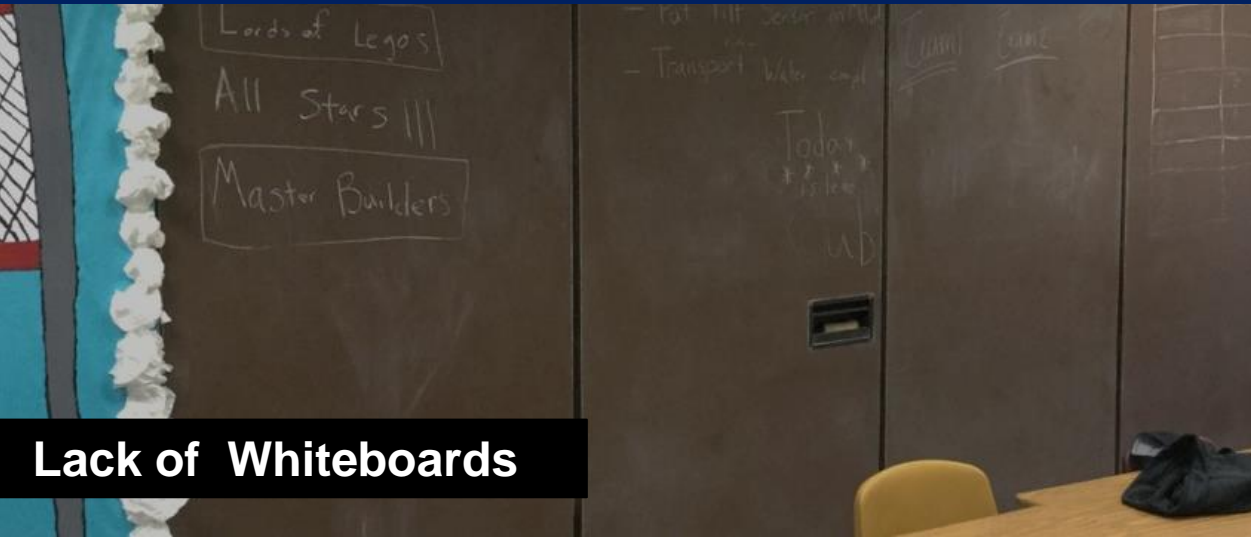
BEFORE: Problems with Wire Management and Access to Power



AFTER: New Wire Management Systems and Adequate and Convenient Outlets



BEFORE: Unsuitable Elementary School Teaching and Learning Conditions



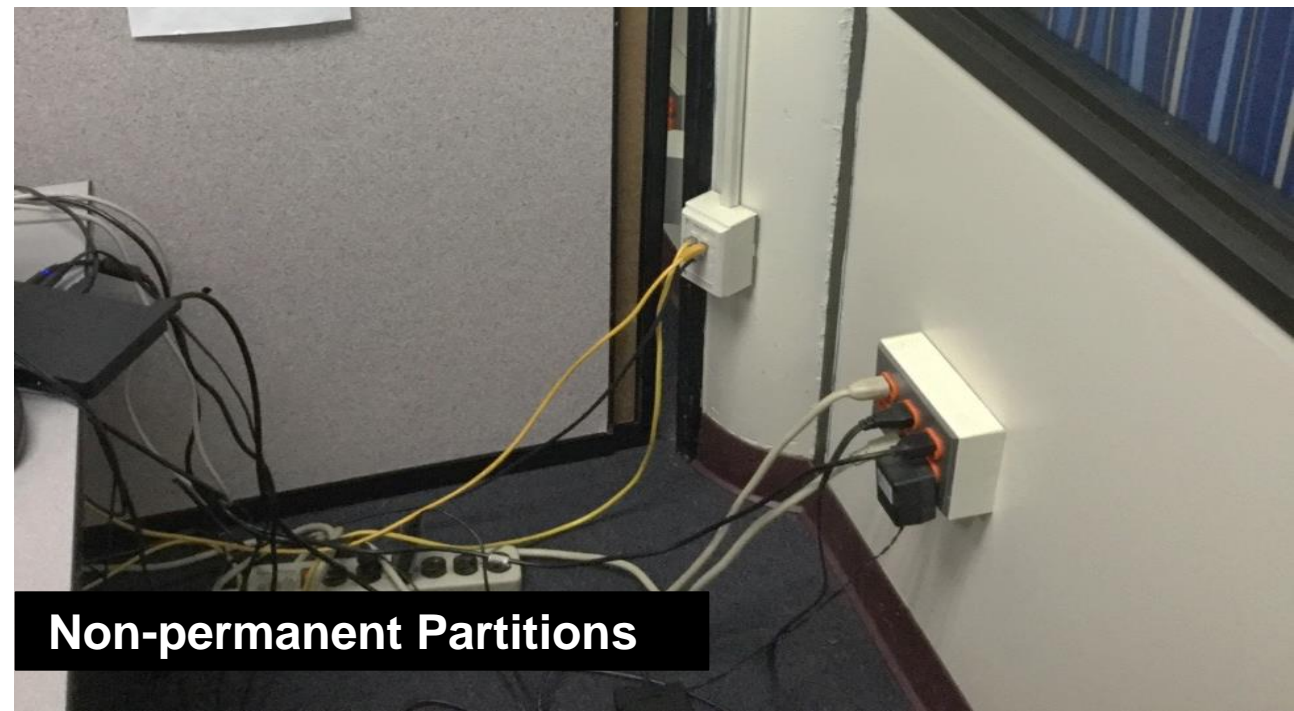
Lack of Whiteboards



Non-dimmable Lighting



Lack of Personal Storage

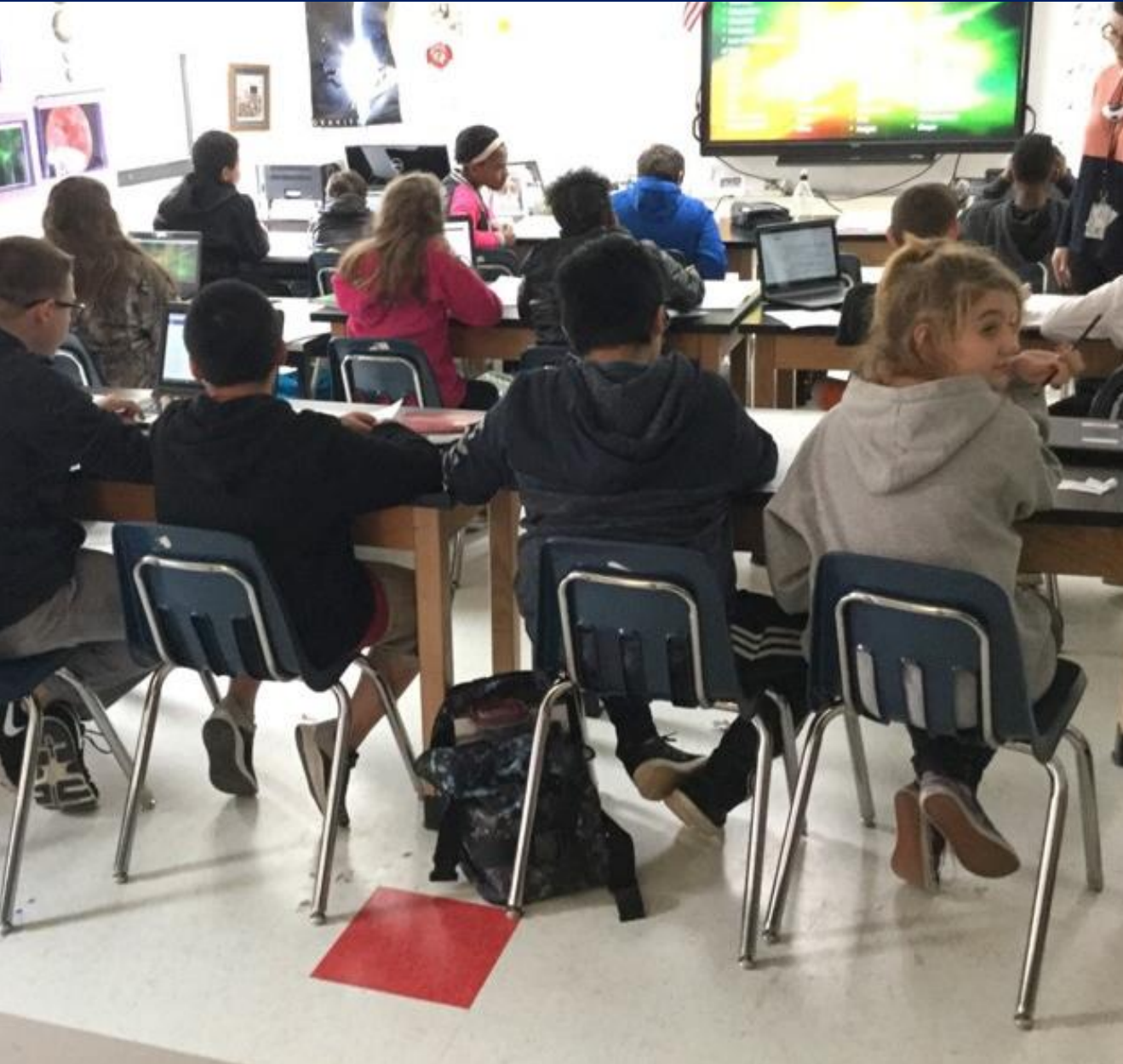


Non-permanent Partitions

AFTER: Abundance of Learning Tools and Appropriate Storage



BEFORE: Small Crowded Middle / High Classrooms with Heavy Furniture



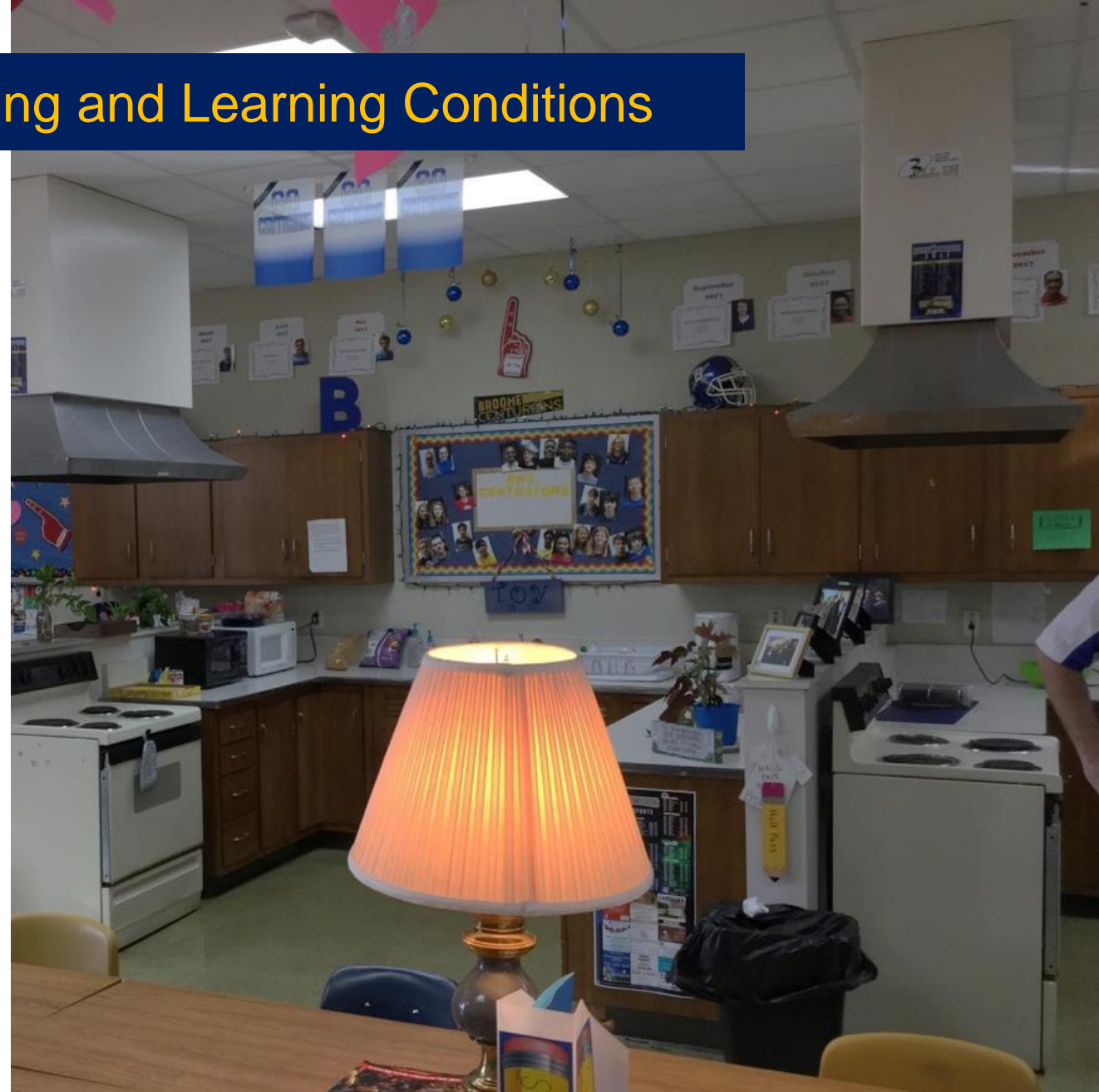
AFTER: Preliminary Concept Flexible Learning Spaces and Furniture



BEFORE: Unsuitable High School Teaching and Learning Conditions



Dated Computer Lab in Unsuitable Space



Exceptional Needs Classroom in Old Home Arts Lab

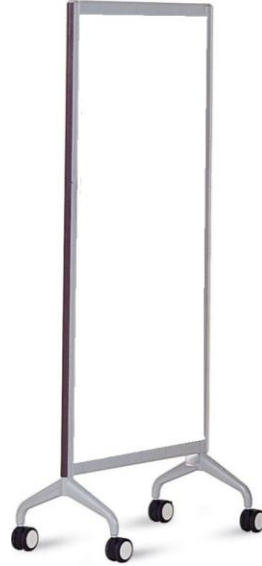
AFTER: Preliminary Concept New Makers Spaces



BEFORE: Age Inappropriate Furniture



AFTER: New Grade Level and Activity Specific Furniture



BEFORE: Worn and Damaged Floor Finishes



AFTER: Preliminary Concept New Age and Activity Appropriate Floor Finishes



BEFORE: Aged Exterior Canopy



AFTER: Preliminary Concept New Exterior Walkway Canopy



BEFORE: Lockers in Corridors Are Rarely Used



AFTER: Preliminary Concept New Tech Bars Replace Lockers



**We shape our
buildings;
thereafter they
shape us.**

– Winston Churchill

”



Existing Cowpens Middle School and Middle School of Pacolet



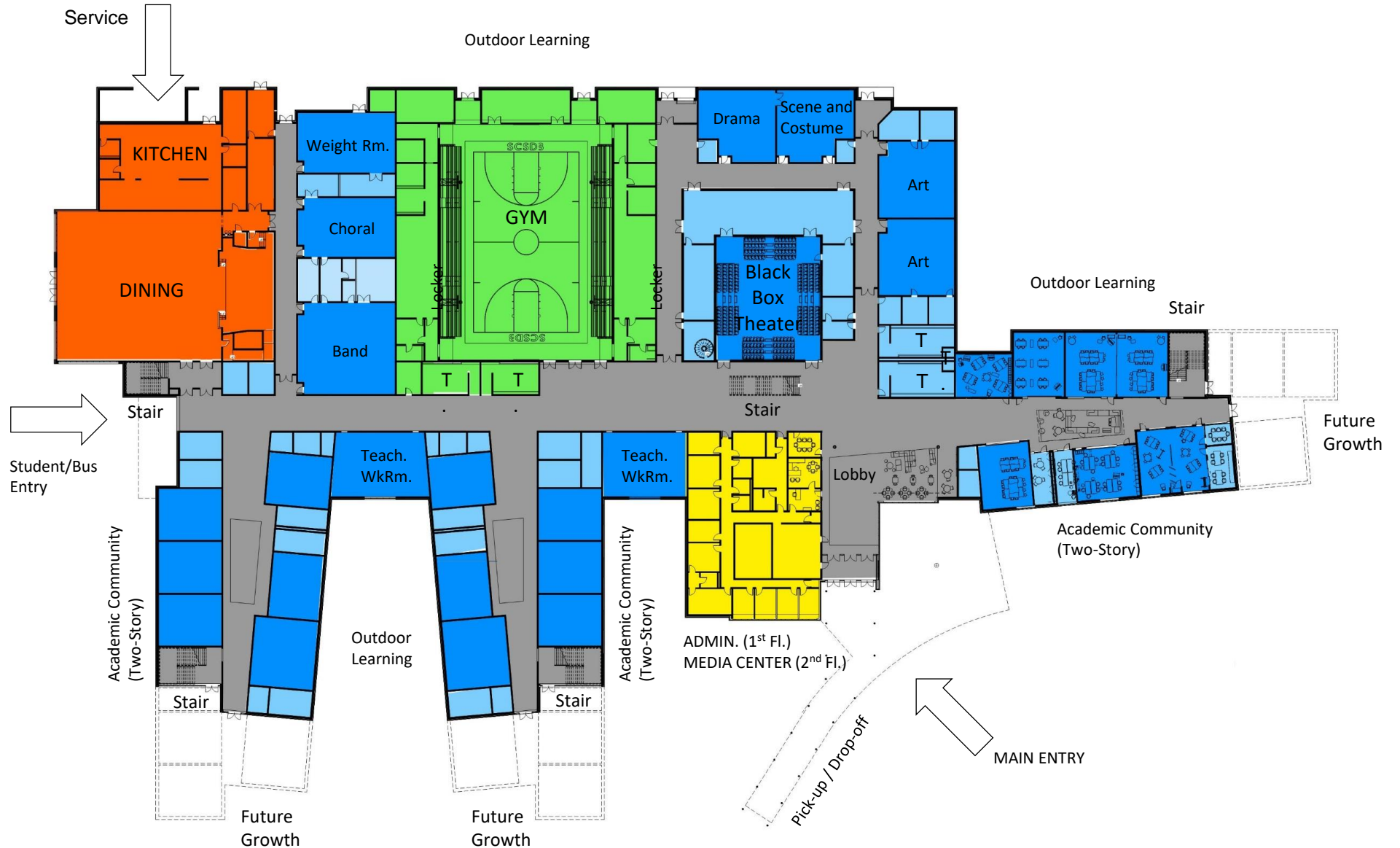
Preliminary Concept New Middle School



Preliminary Concept New Middle School First Floor Plan

BUILDING DESIGN CONSIDERATIONS

- STEM and STEAM Applications
- Educational Delivery Methods and Scheduling
- Areas for future expansion.
- Identifiable Front Entry, Safety and Security for the Campus
- After-hours Access and Use
- Personalized Learning Influences and Learning Styles
- Encouraging Cross Interaction between students and programs.
- Multi-Function Areas for Teaching style Diversity.
- Natural Lighting and Visual Interest
- Smaller Academic Communities within the Overall School



Preliminary Concept New Secure Entrance and Collaboration Lobby



Preliminary Concept New Media Center Casual Collaboration Space



Preliminary Concept New Media Center



BEFORE: Students of Multiple Grades Crowding into the Same Corridor



AFTER: Preliminary Concept New Grade Level Learning Communities



BEFORE: Small Crowded Classrooms with Heavy Furniture



AFTER: Preliminary Concept Flexible Learning Spaces and Furniture



BEFORE: Inadequate Science Lab



AFTER: Preliminary Concept New STEM Lab



BEFORE: Inadequate Arts Spaces



AFTER: Preliminary Concept New Black Box Theater



BEFORE: Aged and Dated Gymnasium



AFTER: Preliminary Concept New Gymnasium



FUTURE READY SCHOOLS – FUTURE READY LEARNING





SPARTANBURG COUNTY SCHOOL DISTRICT THREE
NEW MIDDLE SCHOOL CONCEPT

STUDENT TO TEACHER RATIO

CURRENT TWO MIDDLE SCHOOL MODEL



22 STUDENTS
PER TEACHER

NEW MIDDLE SCHOOL MODEL



18 STUDENTS
PER TEACHER

CLASS SIZE=
HOW MANY STUDENTS ARE IN A CLASS

CLASSROOM SIZE=
HOW BIG THE ROOM IS



CURRENT
AVERAGE
MIDDLE
SCHOOL
CLASSROOM
SIZE
600-700 SQ.
FEET



EXPECTED
AVERAGE
CLASSROOM
SIZE AT NEW
MIDDLE
SCHOOL
800-900 SQ.
FEET

**SPARTANBURG COUNTY SCHOOL DISTRICT THREE
NEW MIDDLE SCHOOL CONCEPT**

**IF THE CONCEPT IS APPROVED, WHAT'S
THE PLAN FOR THE OLD BUILDINGS?**



**NO FINAL DECISIONS
HAVE BEEN MADE
CONCERNING THE
FUTURE USE OF
COWPENS MIDDLE
SCHOOL AND THE
MIDDLE SCHOOL OF
PACOLET.**



**HOWEVER, THE
DISTRICT AND
TOWNSHIPS ARE
WORKING DILIGENTLY
TO BRING ALL
NECESSARY PARTNERS
TOGETHER TO ALLOW
THESE
CORNERSTONES OF
THE COMMUNITY TO
TRANSITION INTO
VIBRANT COMMUNITY
CENTERS.**



SPARTANBURG COUNTY SCHOOL DISTRICT THREE LOOKING INTO THE POSSIBILITIES



THE FUTURE READY SCHOOLS CONCEPT WILL ALLOW SPARTANBURG SCHOOL DISTRICT THREE TO BE THE CATALYST WHICH PROMOTES GROWTH AND POSITIVE ECONOMIC DEVELOPMENT THROUGH THE CONSTRUCTION OF A NEW VIBRANT STATE-OF-THE-ART MIDDLE SCHOOL FACILITY. WE BELIEVE A NEW SCHOOL WILL DRAW MORE FAMILIES INTO OUR DISTRICT.



HOW THE MONEY BREAKS DOWN

**NEW MIDDLE SCHOOL:
\$38-39 MILLION**

**HIGH SCHOOL & ALL FOUR
ELEMENTARY SCHOOLS
REVITALIZED: \$18-19 MILLION**

- NEW ROOFS
- NEW FURNITURE
- FLOOR COVERINGS
- SAFETY IMPROVEMENTS
- 21ST CENTURY LEARNING ENVIRONMENTS



ARTIST RENDERING

**TOTAL:
\$55-58 MILLION**

BOND REFERENDUM REQUIRED

HOW YOUR TAX DOLLARS BREAK DOWN

27¢ PER DAY
\$8.22 PER MONTH



**COST FOR A
\$50,000 HOUSE**

41¢ PER DAY
\$12.33 PER MONTH



**COST FOR A
\$75,000 HOUSE**

54¢ PER DAY
\$16.43 PER MONTH



**COST FOR A
\$100,000 HOUSE**

FUTURE
READY
SCHOOLS



PROJECTED NEW SCHOOL COSTS

ADVANTAGES

- NEW BUILDING STRUCTURE
- NEW BUILDING SYSTEMS
- REDUCING OPERATIONAL COST OF \$700,000 A YEAR
- 21ST CENTURY SCHOOL
- NEW LIFE EXPECTANCY
- MORE CURRICULUM OFFERINGS
- HIGH SCHOOL CREDIT CLASSES
- ENCOURAGING ECONOMIC GROWTH
- MAINTAINING SMALL CLASS SIZES
- INCREASING CLASSROOM SPACE FOR PROJECT-BASED LEARNING

DISADVANTAGES

- INITIAL COST



TOTAL: \$38-39 MILLION

**\$700,000 SAVED
PER YEAR**

**BUILDING INSTEAD OF RENOVATING
WOULD COST THE SAME, BUT SAVES
YOU MONEY EVERY YEAR.**

PROJECTED RENOVATION COSTS

COWPENS MIDDLE SCHOOL

SITE ISSUES:	\$1,072,000
BUILDING ISSUES:	
BUILDING SHELL:	\$880,000
INTERNAL FINISHES:	\$2,710,000
MECHANICAL/ELECTRICAL:	\$4,835,000

CLASSROOM SIZE ISSUES:

CLASSROOM WING MODIFICATIONS:	\$5,090,000
SCIENCE WING MODIFICATIONS:	\$2,480,000
ADDITIONAL PROJECT LABS:	\$1,740,000

TOTAL: \$16,807,000

MIDDLE SCHOOL OF PACOLET

SITE ISSUES:	
BUILDING ISSUES:	\$871,000
BUILDING SHELL:	\$1,434,000
INTERNAL FINISHES:	\$1,434,000
MECHANICAL/ELECTRICAL:	\$8,800,000

CLASSROOM SIZE ISSUES:

CLASSROOM WING MODIFICATIONS:	\$4,000,000
CAFETERIA EXPANSION:	\$950,000
NEW MUSIC/ATHLETIC BUILDING:	\$5,180,000

TOTAL: \$22,871,000

TOTAL: \$39,678,000

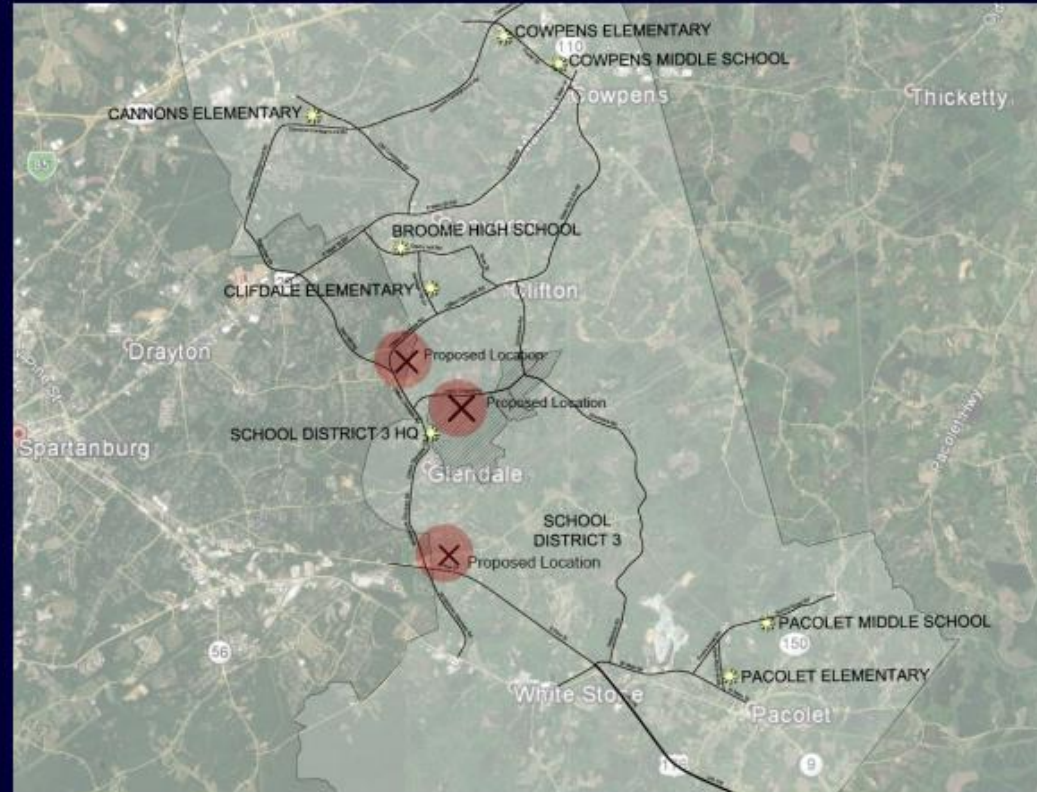
REASONS NOT TO RENOVATE

- 64 YEAR OLD BUILDINGS
- REPLACING BUILDING SYSTEM COMPONENTS ONLY
- BUILDINGS ARE PAST LIFE EXPECTANCY
- ADDITIONAL OPERATIONAL COSTS
- OUTDATED LEARNING ENVIRONMENTS
- INFRASTRUCTURES ISSUES
- NO NEW CURRICULUM OR CLASSES



2018 SPARTANBURG COUNTY SCHOOL DISTRICT THREE MIDDLE SCHOOL CONCEPT

POTENTIAL LOCATIONS



**WE ARE CURRENTLY REVIEWING THREE 25-30 ACRE SITES
CENTRALLY LOCATED IN OUR DISTRICT.**

THE POTENTIAL LOCATIONS ARE:

- THE PROPERTY BEHIND THE DISTRICT OFFICE
- NEAR THE INTERSECTION OF FERNWOOD-GLENDALE
AND CLIFTON-GLENDALE ROADS
- NEAR THE INTERSECTION OF WHITESTONE-GLENDALE
AND BETHESDA ROADS



QUESTIONS?