



Margaretta

Local School District

Community Meeting

November 5, 2018


FANNING
HOWEY

Thank you for coming!

Goals for today:

- Introductions
- Overview of the process
- Background information
- Identifying key issues
- Getting your feedback

A GUIDED PROCESS
TO GET YOU FROM
HERE TO **THERE**

HERE

Collect
information

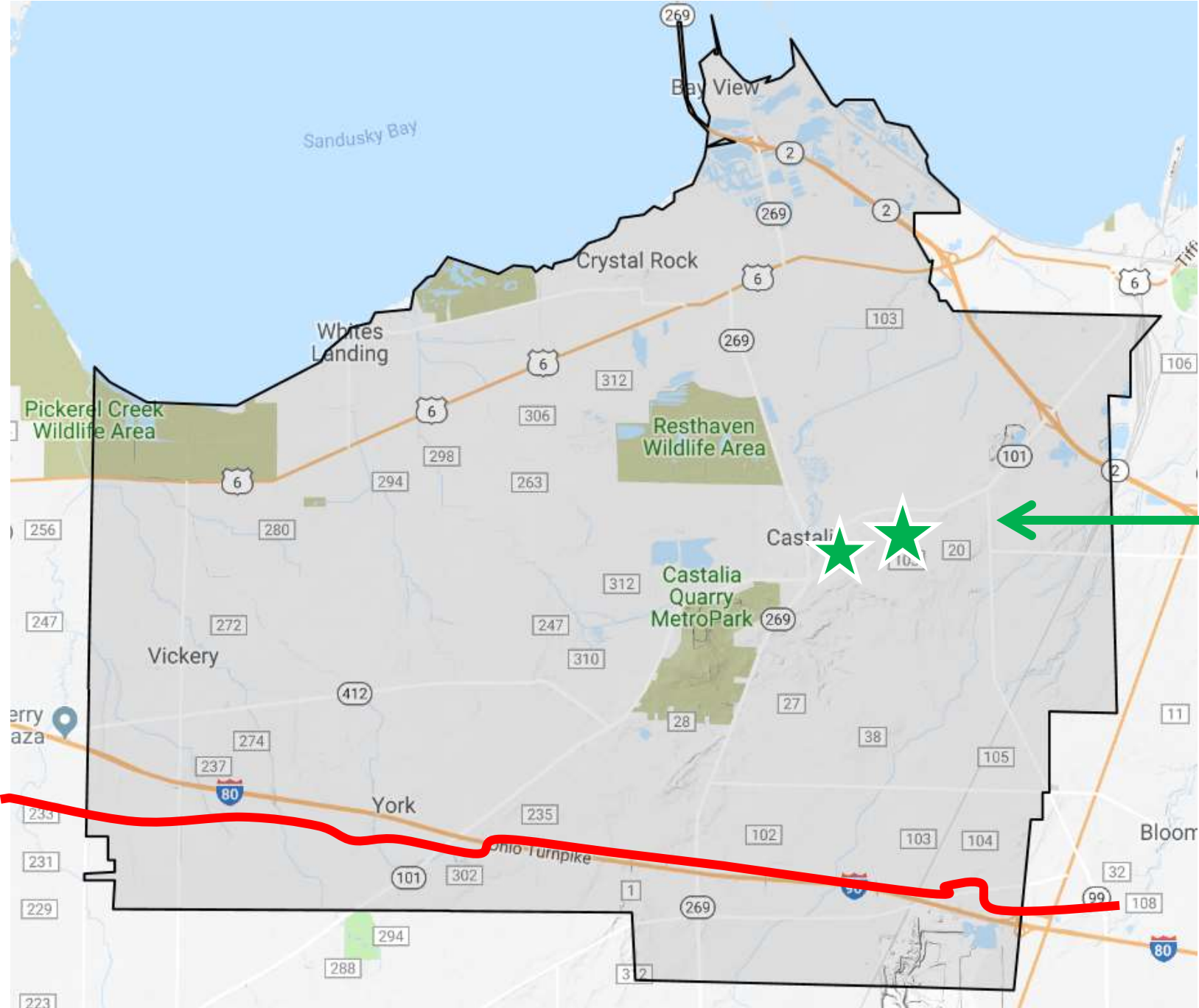
Connect
with Community

Create
Options

Complete
with Confidence

THERE

Pipeline Funding



School Locations

Approximate path of NEXUS pipeline

NEXUS- Natural Gas Supply Transmission

257 miles of 36" pipe and 4 compressor stations in Ohio/Erie County- 26.81 miles, 571 jobs/209.3 miles in Ohio.

Fortunately, 2 of the compressor stations are in our school district.

Partners: DTE Energy, Spectra Energy and Endridge Company, Midwest Pipeline- Ohio, Michigan, Chicago and Canada

Delivery of gas to Home, Business, Power generators and Industrial users and Operate 24 hours per day/7 days a week

Estimated Public Utility Property Tax Revenues- Counties, School Districts, Career Tech SD, Municipalities and Twps.

IF the pipeline is completed and placed in service during the 2018 calendar year, the property would go on the tax duplicate for the 2019 year with the first tax revenue paid in 2020. Revenue projected for the first 5 years/barring any appeals/Legislative interference is estimated for our school district to be \$6.2 million the first 5 years. However, a \$400,000 appeal has already been granted to NEXUS.

It is also estimated a 3.3% to 5.0% annual depreciation over 30 years. Our BOE passed a 'Resolution' in September for distribution of the projected revenue- 25% General Fund, 50% facilities and 25% set aside for Reserves.

4 Pipeline Projects- Rover (Mich./Chicago/Canada/), Leech (N and S to Ohio River), NEXUS (Ohio, Mich. and Canada) and Buckeye Xpress(replaces 20" line 64 miles in Canada)

On October 10, 2018- NEXUS started using part of the pipeline from Hanover Twp. to southern Michigan (Akron Journal article)



OFCC Background

- The State agency that provides school funding opportunities for Ohio school districts
- Established in 1997
- Participation with OFCC is a district choice
- OFCC is co-owner
- The State will co-fund a project based upon a districts relative wealth in comparison to every other district in Ohio
- The least wealthy districts are eligible for the highest % of State funding

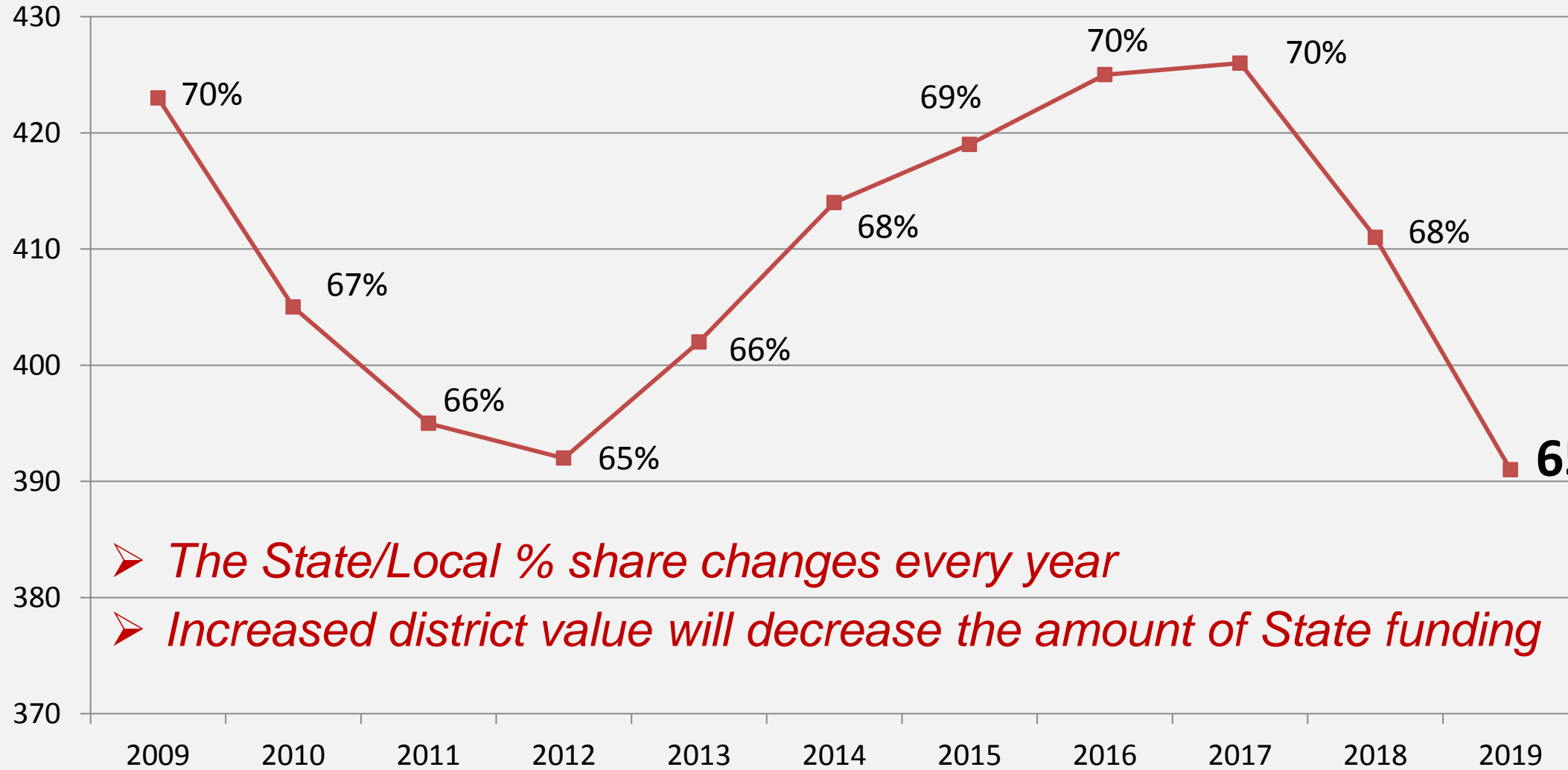
OFCC Guidelines

- **2/3rds rule**
 - Cost to Renovate vs. Replace
- **350 student rule**
 - Any new or renovated school must have 350 students
- **Adhere to the Ohio School Design Manual**
- **OFCC review process**
- **LEED**

OFCC Funding

- The State will co-fund a project based upon a yearly ranking of every school district in Ohio
- Margareta has an OFCC Equity Rank of **#391** out of **610** school districts
- $391 / 610 = \mathbf{65\%}$ Local funding / **35% State** funding for an OFCC project – if funded **today**

OFCC History



**FY-19
#391
65% local
share**

➤ *The State/Local % share changes every year*

➤ *Increased district value will decrease the amount of State funding*

???

Partner with OFCC

or

Pursue a Locally Funded project
utilizing pipeline funds

HERE: Margareta Local School District

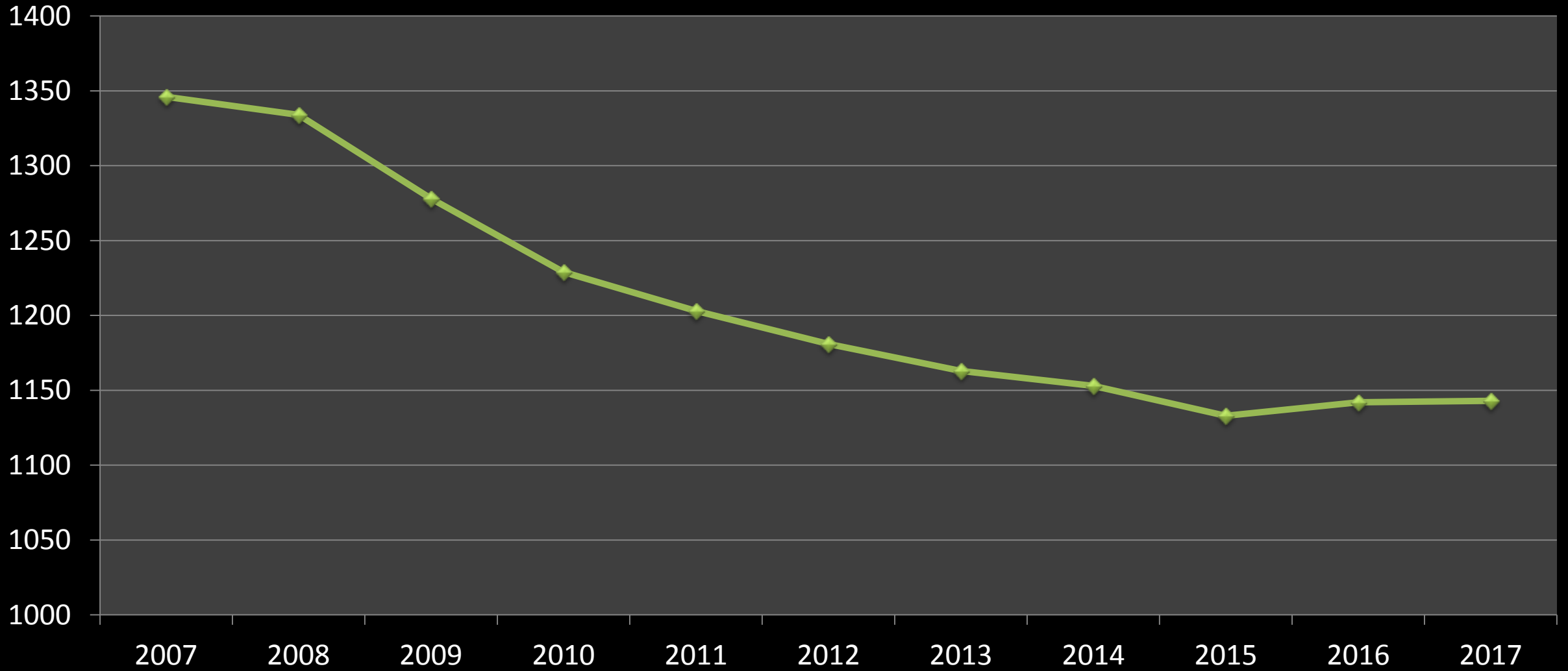
FANNING
HOWEY

- 2 schools (6-12, PK-5) on 2 sites;
built in 1913 and 1959
- 97 Acre site
- Townsend Community School
(on HS campus)
- Currently around 1,150 students
- Visited 20+ schools
- Pipeline Funding



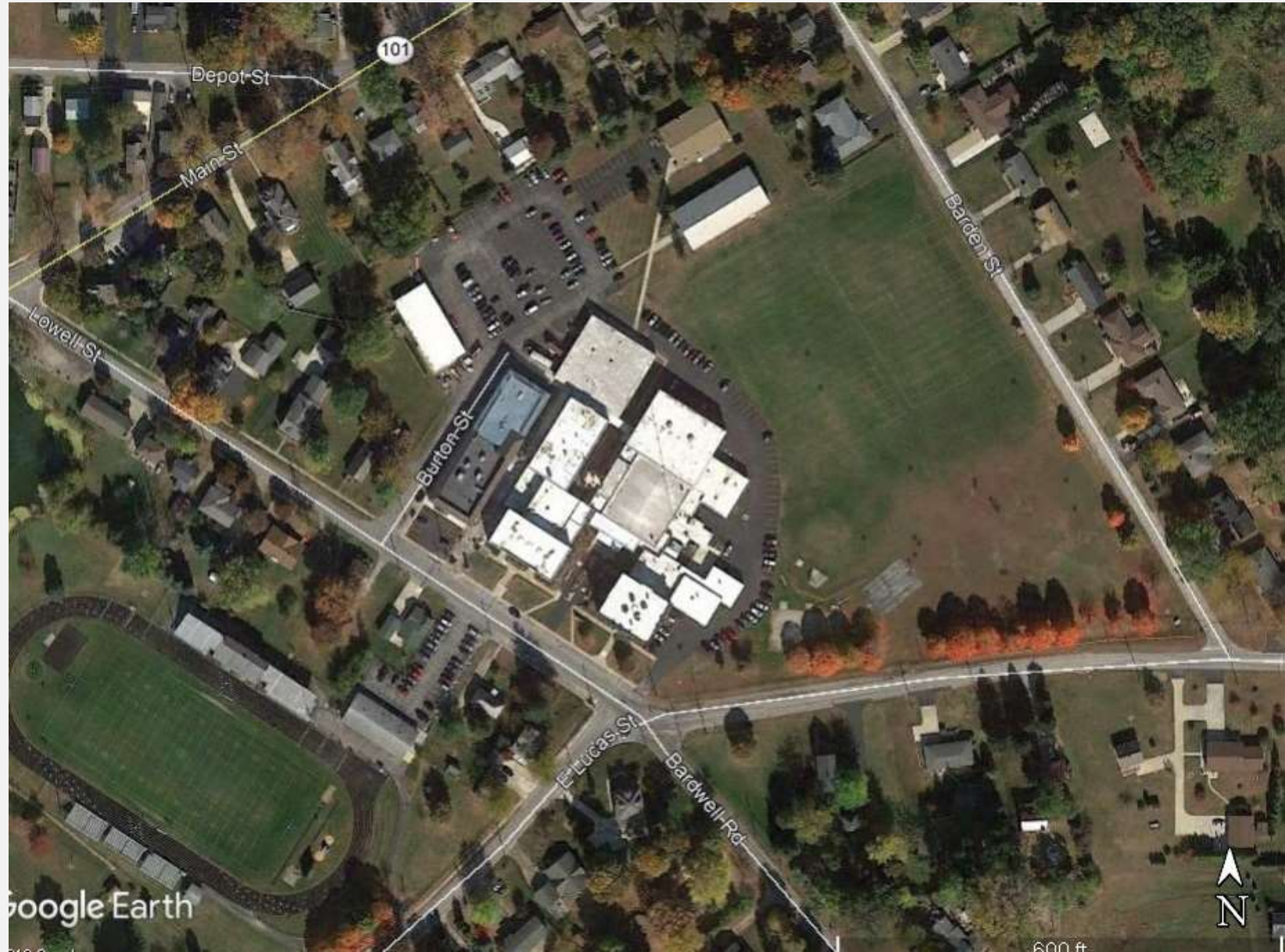
Enrollment History

10 year Enrollment projections will be updated



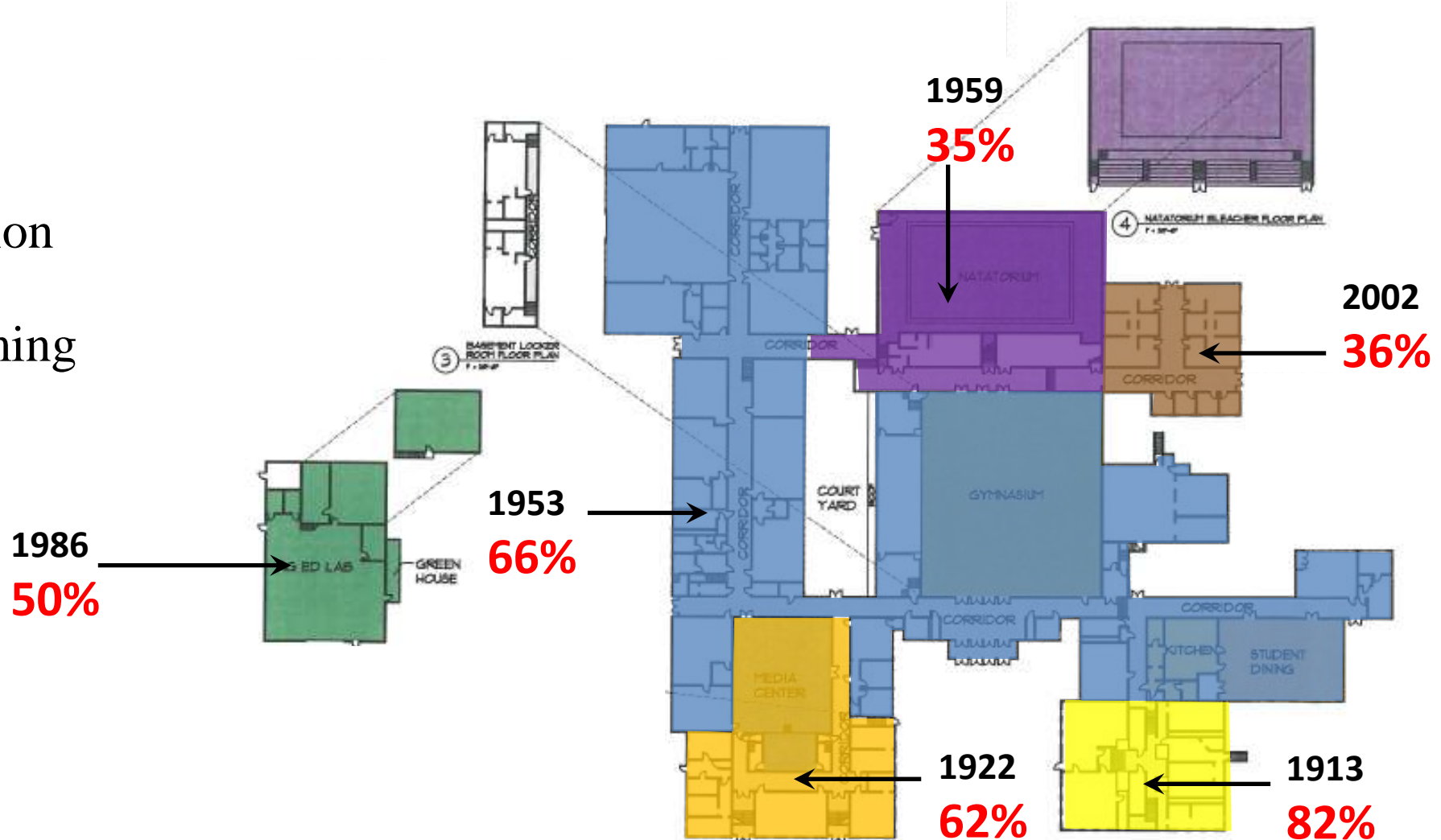
High School Site analysis

- Crowded site
- Limited access from roads
- Inadequate parking
- Lack of space for drop-off and pick up
- Poorly located public entrance
- Shared site
- Bedrock 2-4' below surface
- No storm water retention
- Limited area for construction



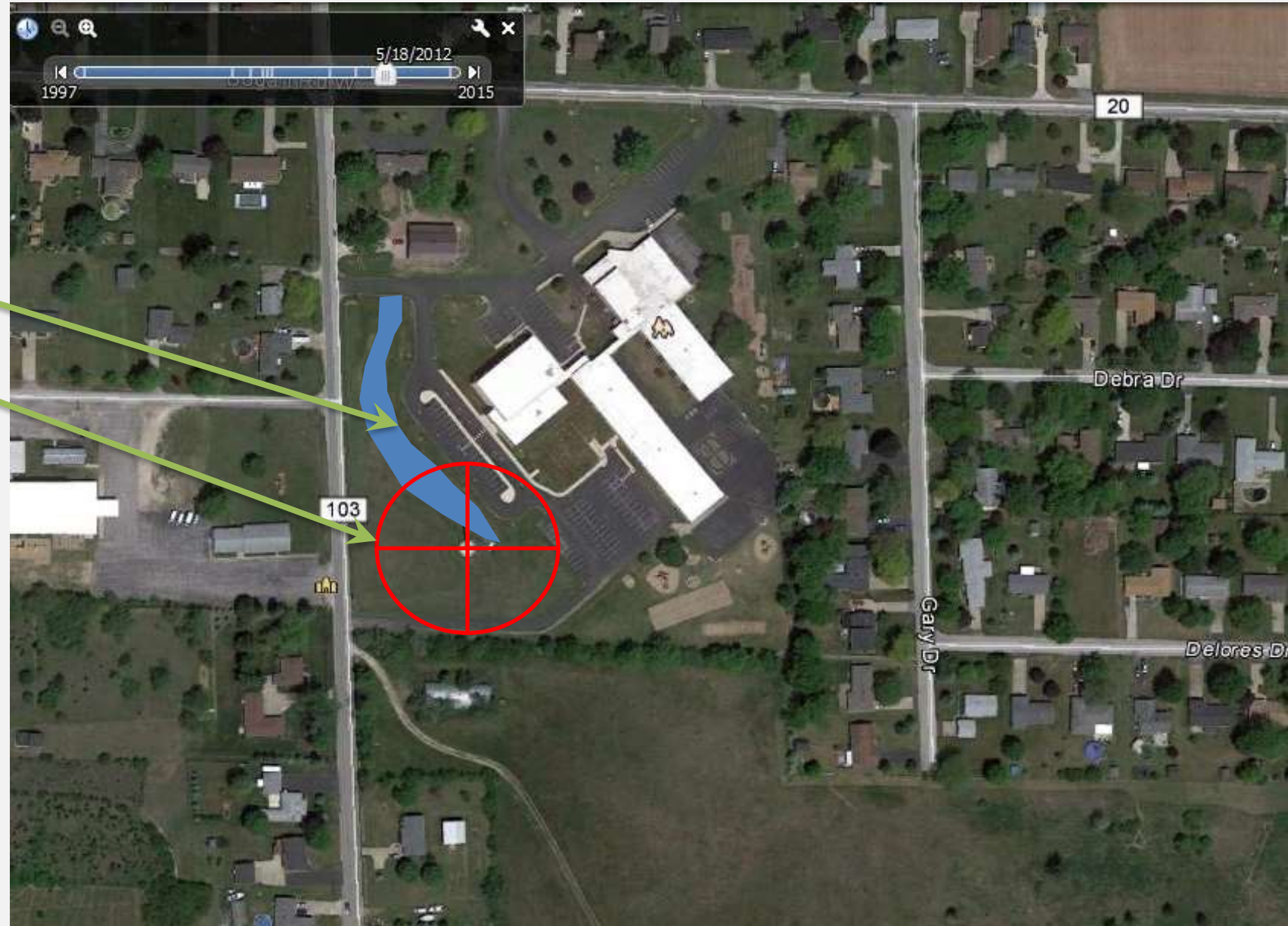
High School Assessment

- Review
- Verification
- Cost validation
- Reprogramming



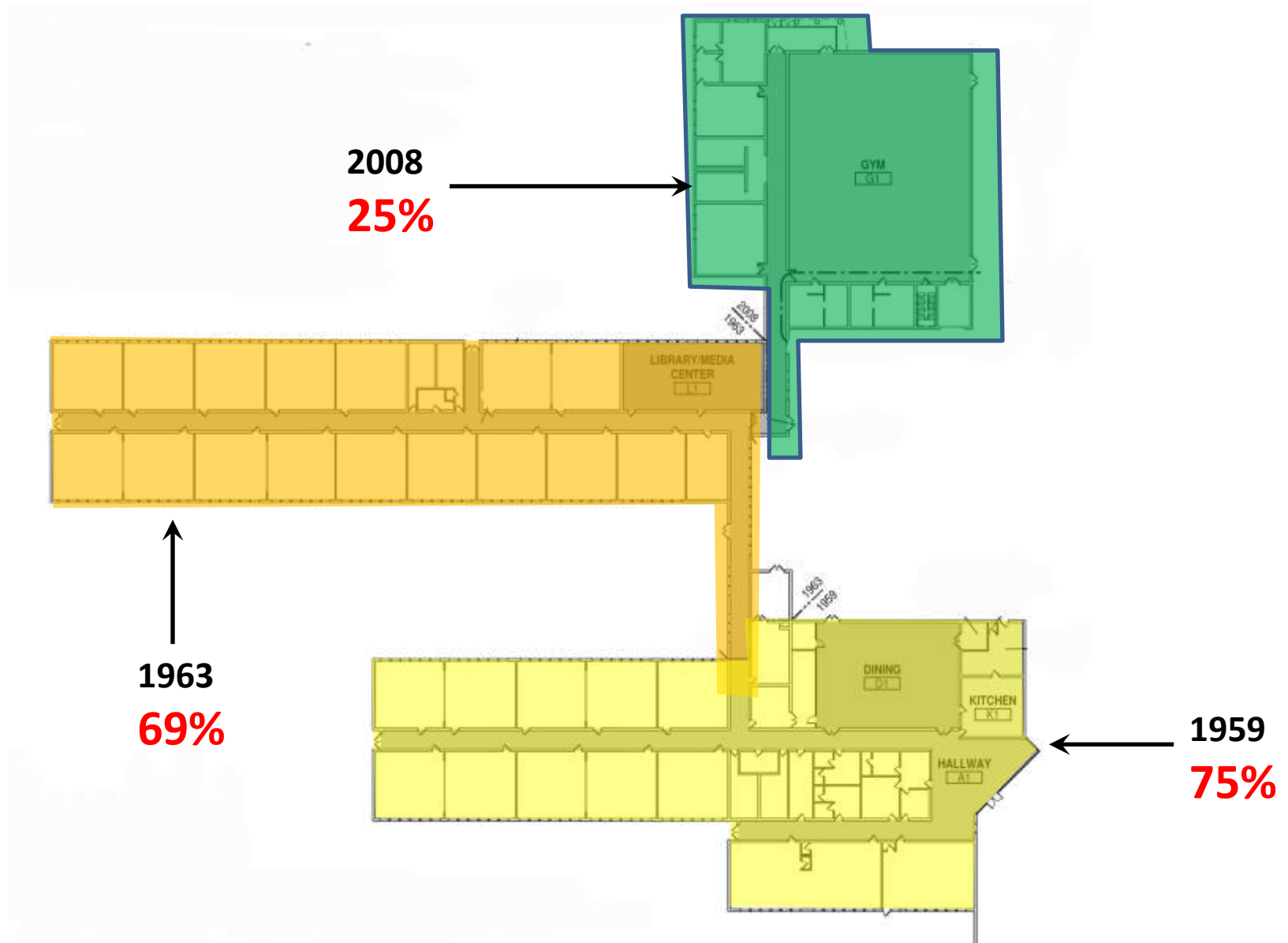
Elementary Site analysis

- Limited area for play
- Good separation of cars and Buses
- Storm water detention
- Wind Turbine fall zone
- Bedrock 2-4' below surface
- Limited area for construction



Elementary School Assessment

- Review
- Verification
- Cost validation
- Reprogramming

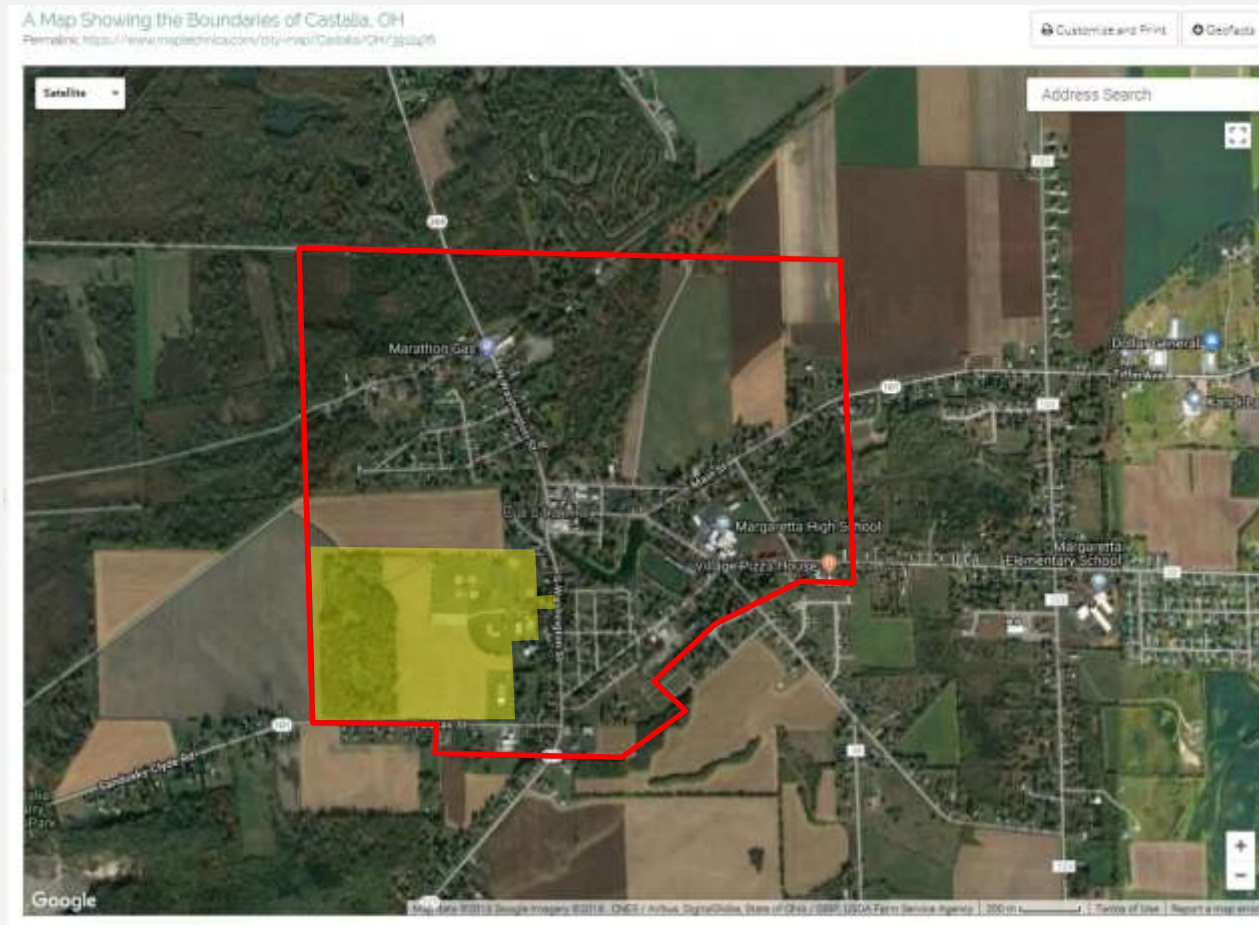
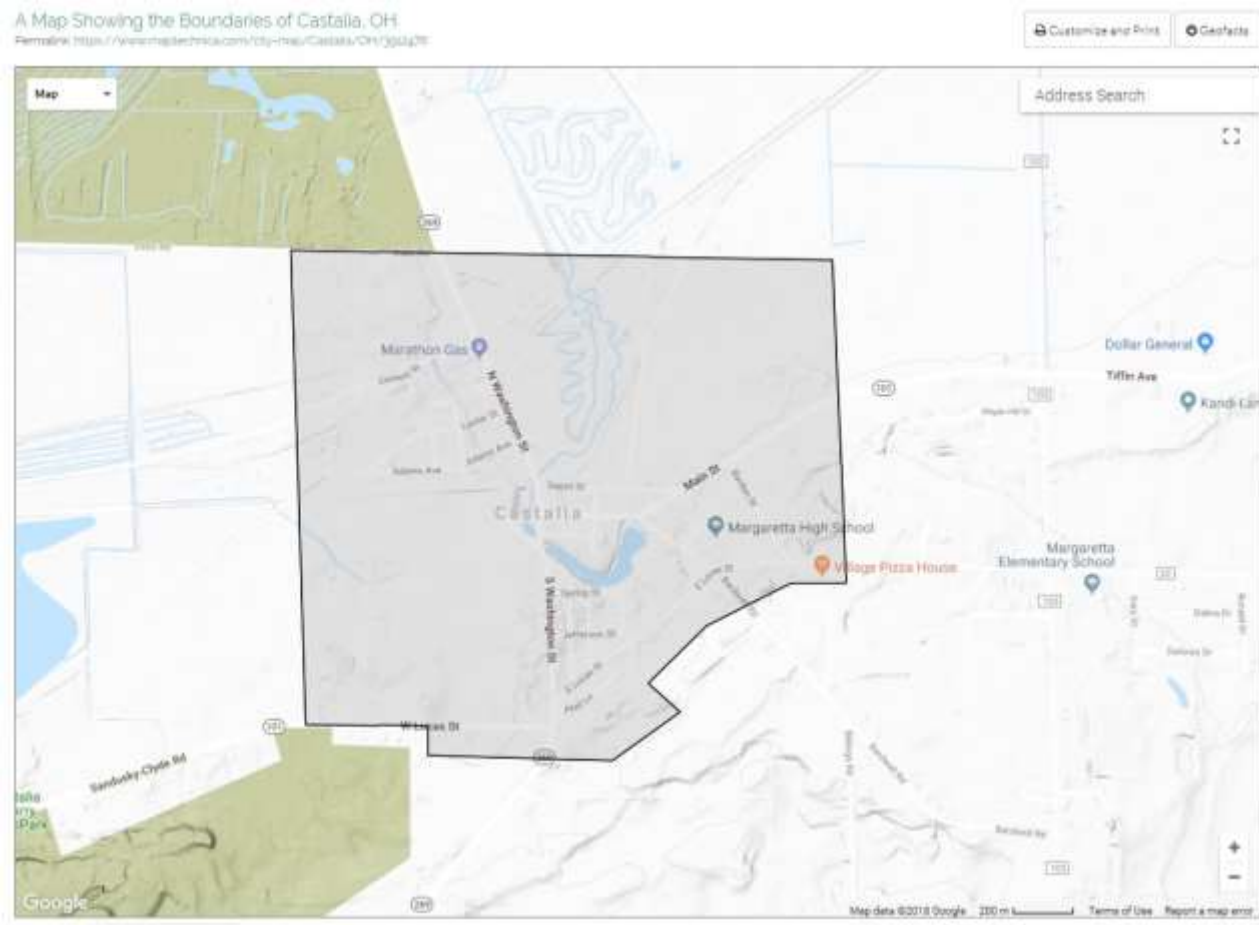


97 Acre Site analysis

- Adequate size – 97 acres
- Good access
- Ability to separate buses and cars
- Space for future growth
- Attractive natural area to support curriculum
- 50 mph speed limit
- Village/ODOT



Castalia Boundary



Building Configuration

Site Selection

OFCC considerations

Locally Funded Initiatives

Educational Delivery

Funding/Nexus Pipeline

Others?



Building Configuration options

Current Configuration

- Margareta Elementary : PK-5
- Margareta Middle/High : 6-12

Potential Configurations

- PK-12
- PK-4 + 5-12
- PK-5 + 6-12
- ???

High School Site Dialogues

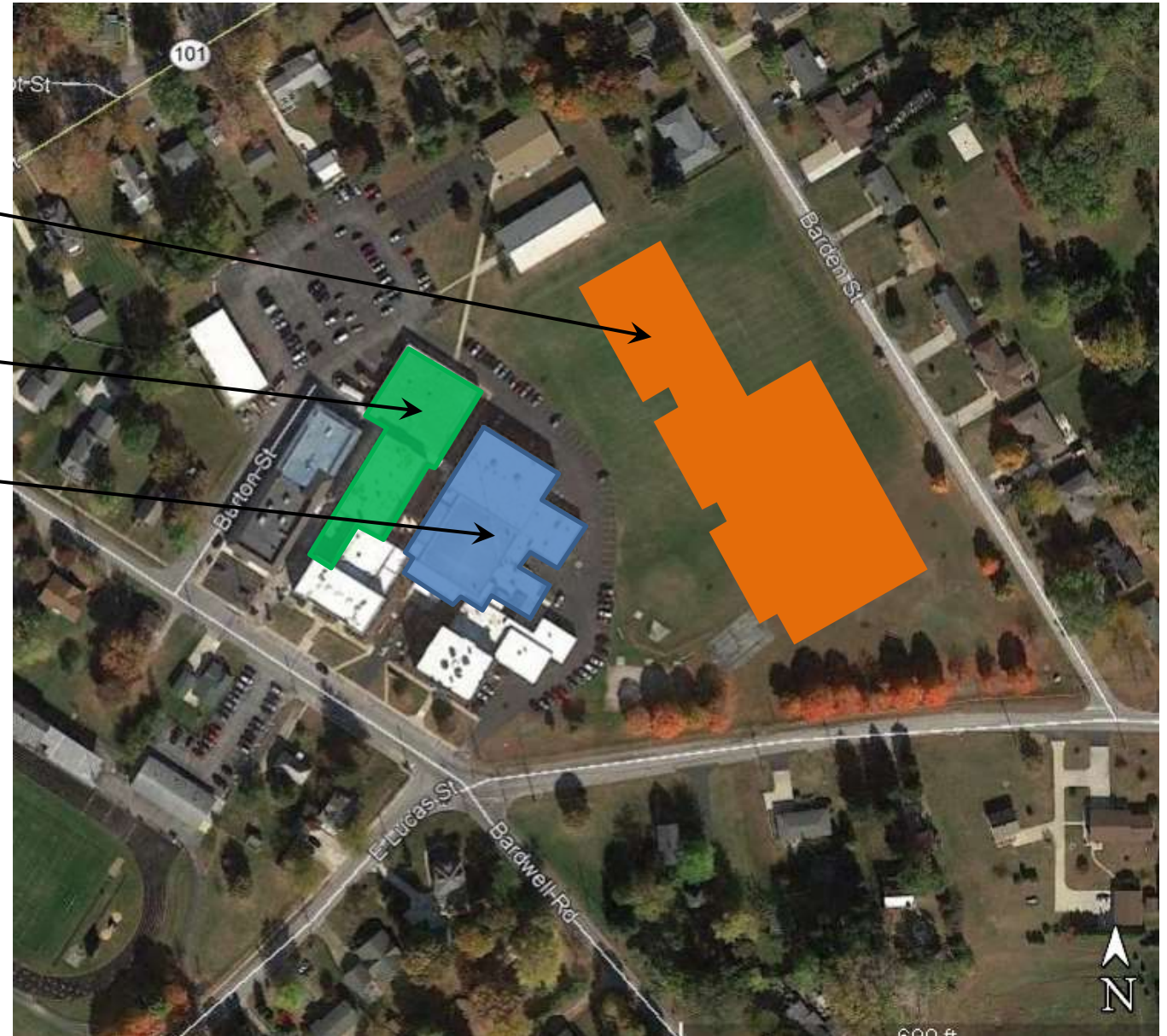
Conceptual footprint for
5-12 or 6-12 building

Space for Townsend?

Maintain gym and pool

Comments, pros and cons on:

- Location
- Site circulation
- Parking
- Access
- Grade configuration



Elementary School Site Dialogues

Conceptual Elementary footprint

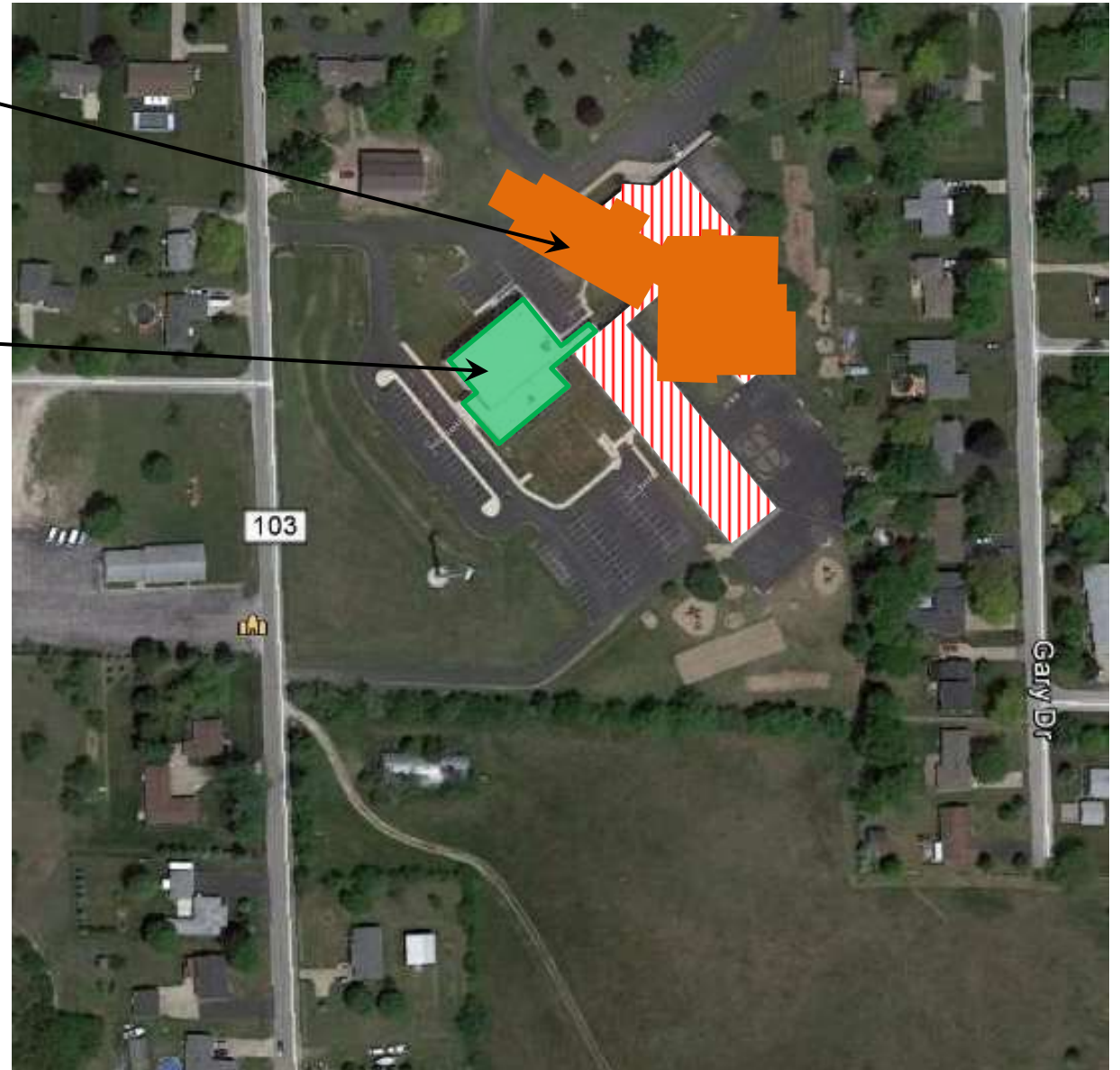
- Requires 2-phase construction to demolish Margareta Elementary first

Maintain 2008 Addition?

- Gym Space?
- Community use?
- Board office?

Comments, pros and cons on:

- Logistics
- Location
- Site circulation
- Parking
- Access
- Grade configuration



Elementary School Site Dialogues

Demolish

Maintain 2008 addition

2-story Elementary Addition
onto 2008 section

Comments, pros and cons on:

- Logistics
- Location
- Site circulation
- Parking
- Access
- Grade configuration

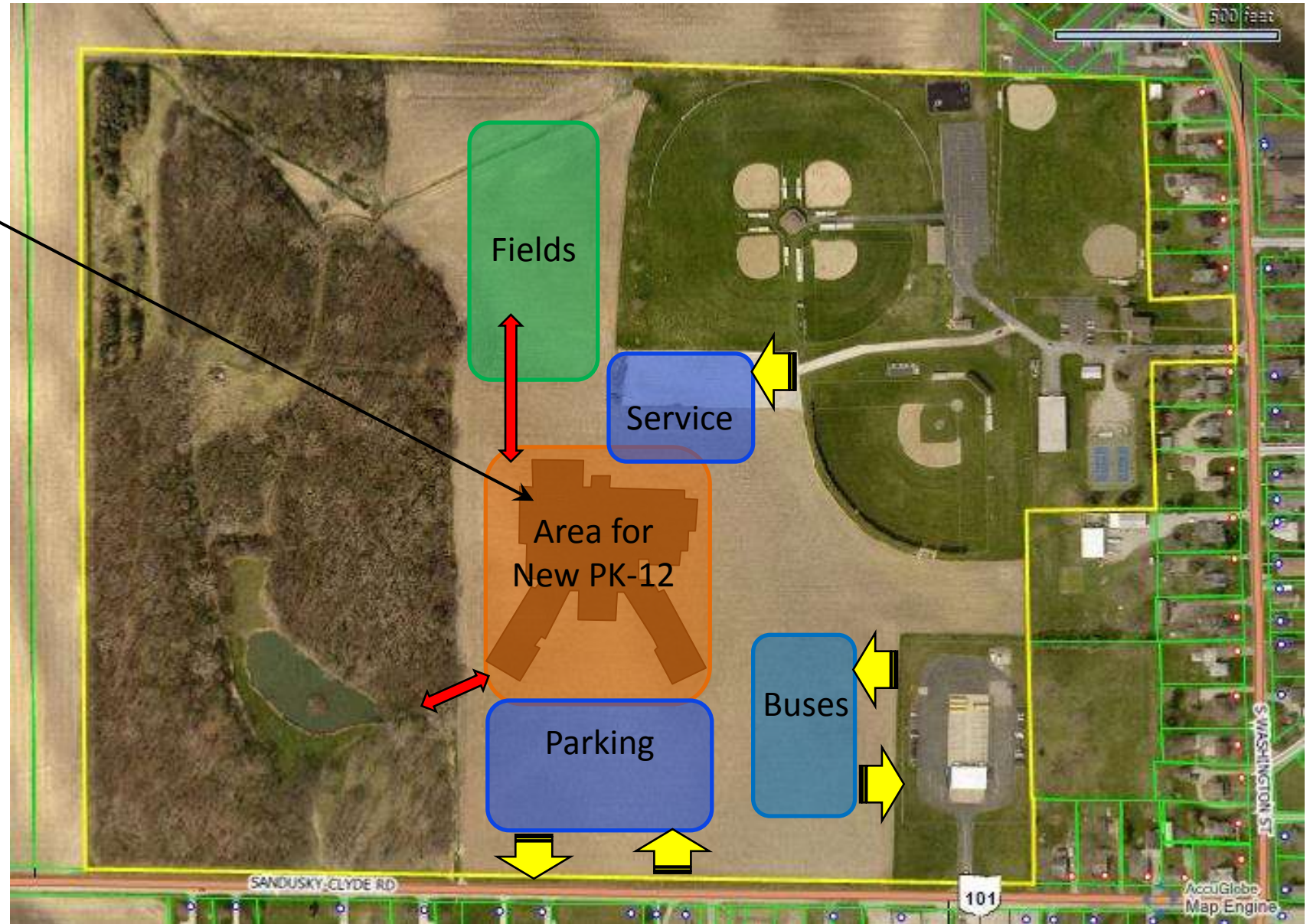


97-acres site Dialogues

Conceptual PK-12 footprint

Comments, pros and cons on:

- Location
- Site circulation
- Parking
- Access
- Grade configuration



Respecting the Past



Locally Funded Initiatives with OFCC

- Additional square footage
- Material or system upgrades
- Site Conditions
- Maintaining portions of existing buildings
 - High school gym
 - High school pool
 - Elementary school gym
- Additional seating in competition gymnasium
- Building artifacts
- Performing Arts



Educational Delivery

Bellevue



Eastwood



Northwood



TRADITIONAL SCHOOLS

21ST CENTURY SCHOOLS



Carey



Middletown



West Muskingum

Community Engagement

- October 17, 2018 : Facility Planning Committee kick-off
- November 5, 2018: 1st Community Meeting

PREBOND ASSISTANCE
MARGARETTA LOCAL SCHOOLS
CASTALIA, OH
PROJECT NO. 218061.00

October 17, 2018

FACILITIES PLANNING COMMITTEE
GROUP DISCUSSION

Thinking about the current Margaretta schools, what are the biggest facility needs?

List ideas below and then collectively identify the top 3 facility needs.

- **Facility Needs**
 - Has to be affordable
 - Air Conditioning
 - Safety - Security
 - Pre-K-12 Campus!!
 - New gym – or indoor athletic facility
 - Parking
 - 1 Level Campus
 - How many true acres are buildable?
 - Lease on Lion's Park – how long?
 - Air conditioning/climate control (in classrooms)
 - Size of classroom
 - Storage in classroom
 - Storage outside of classroom
 - ADA requirements
 - Resource rooms
 - Sensory rooms (students w/more special needs)
 - Improved sewer
 - Placement of student bathrooms in relation to classrooms
 - Additional staff only restrooms
 - Phones/communication to all rooms in building
 - Outlets on more than 1 wall
 - Common areas w/moveable walls
 - Better natural lighting (skylights)
 - Outdoor educational spaces
 - Designated recess areas away from educational spaces (classrooms/windows)
 - Upgraded security/cameras/classroom door locks
 - Inside recess area – separate for music productions
 - Media center
 - Accessibility
 - Separate buses & delivery from parents & kids
 - Handicap Ready (STEM) – 21st century ready
 - Separation of HS/Middle/Elementary
 - Storage
 - New VoAg Building on location
 - New weight room on site w/practice fields
 - Security/Safety
 - Wide Hallways

Community Engagement

- October 17, 2018 : Facility Planning Committee kick-off
- November 5, 2018: 1st Community Meeting

Next Steps

- **January 2019 : Facility Planning Committee will meet**
- **February 2019 : Community meeting to share options and get input**

Questions?

Thank you for coming!
