



Margaretta

Local School District

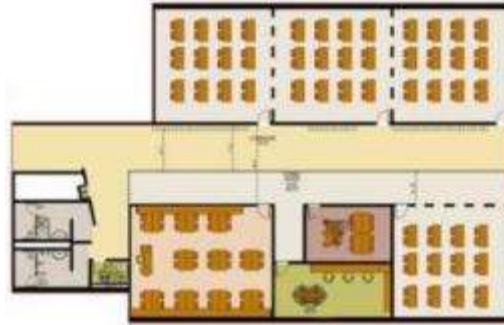
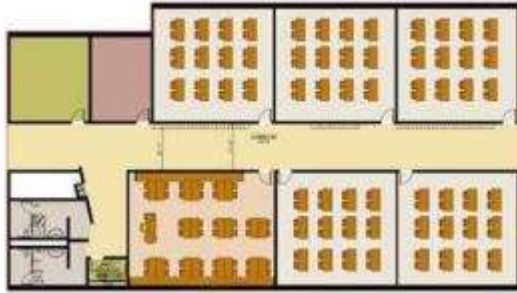
Staff Visioning – Middle & High School Staff – 50+ participants

**FANNING
HOWEY**

January 11, 2021

Design Considerations

Educational Visioning



Traditional

Transitional

Transformational

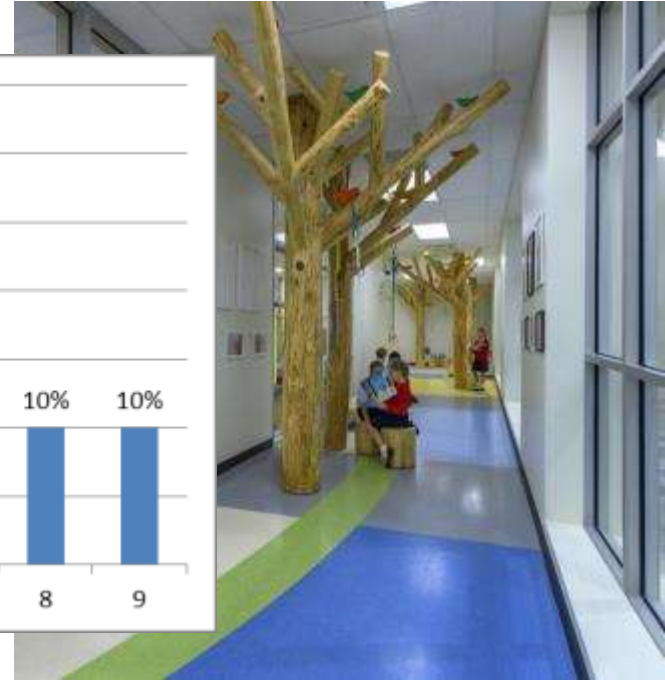
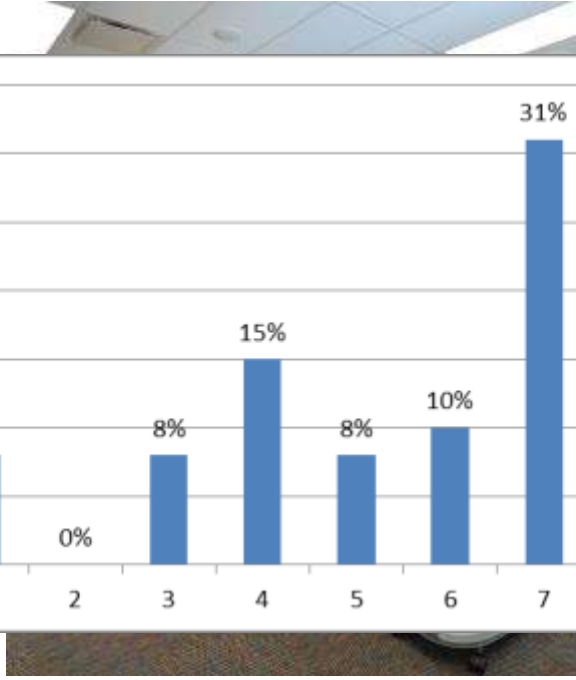
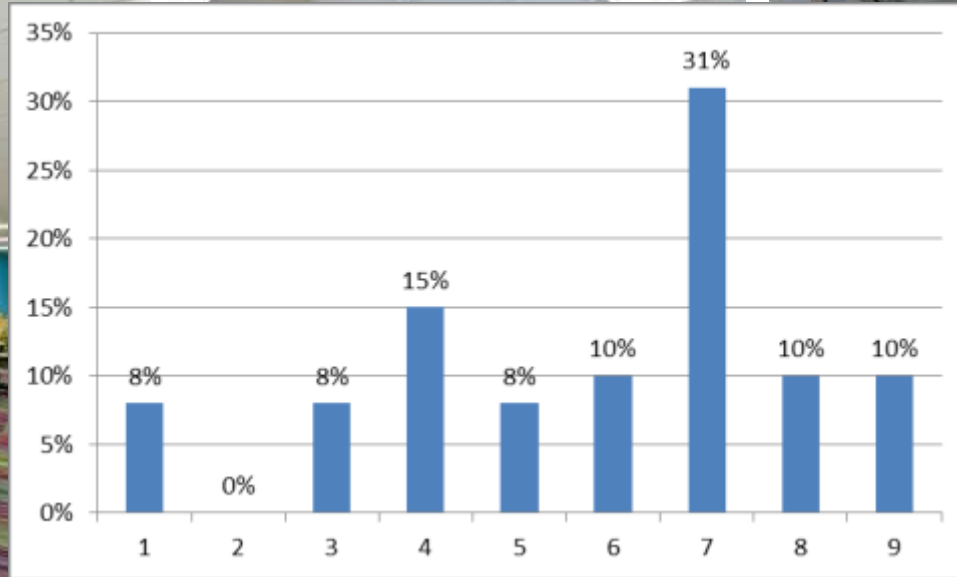
Connectivity/Transparency between spaces







Connectivity/Transparency between spaces



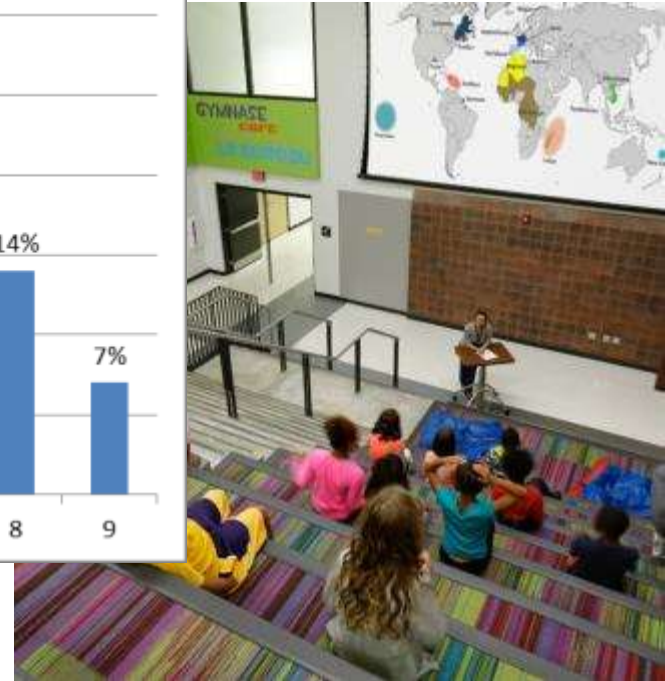
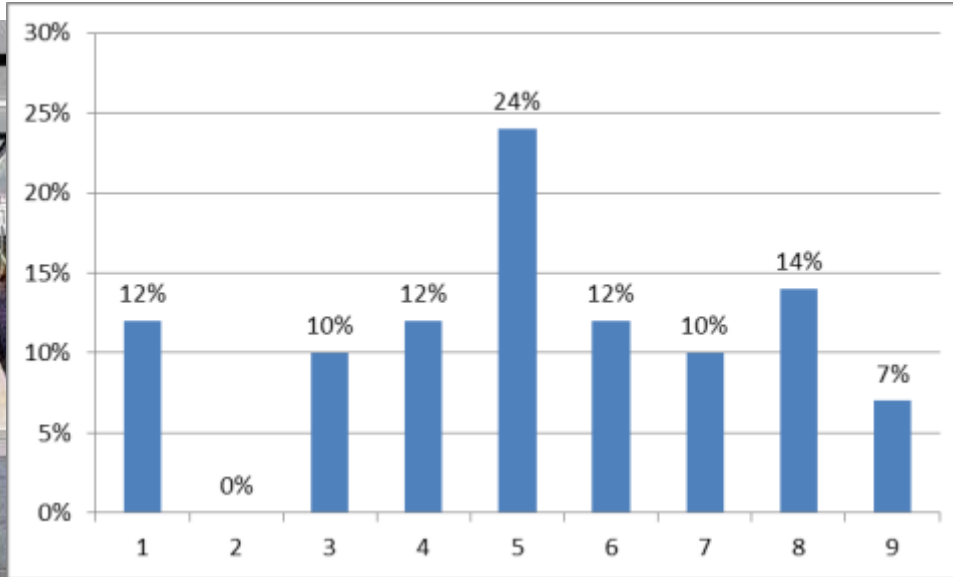
Stairs as a learning space







Stairs as a learning space



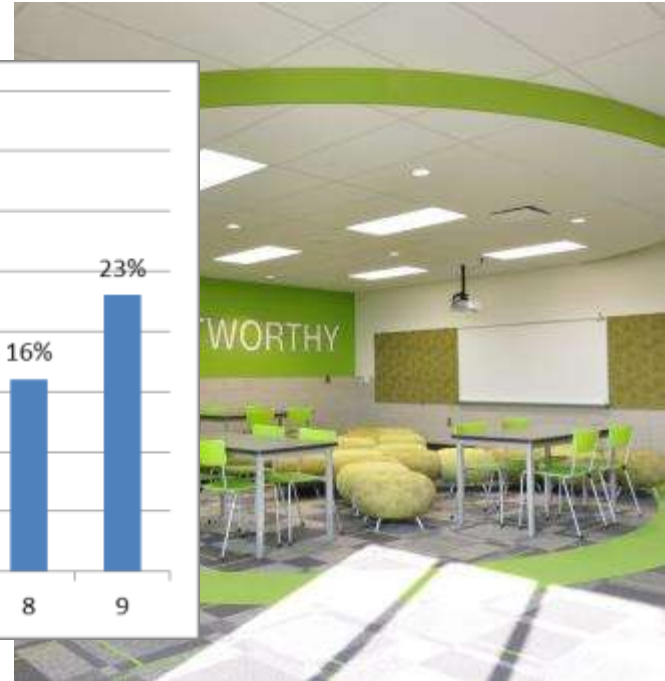
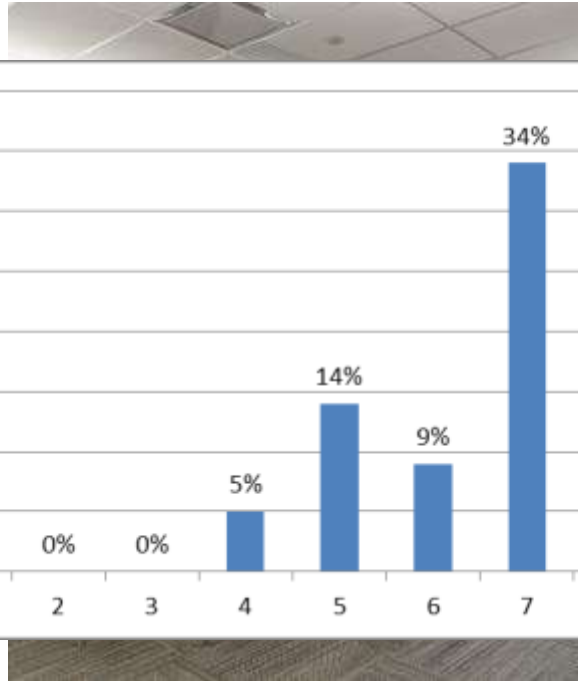
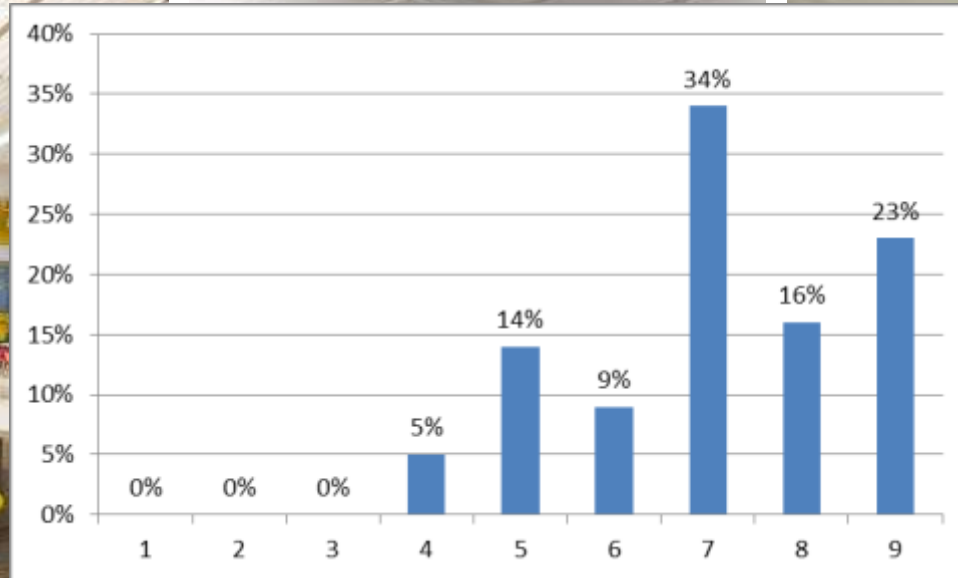
Extended Learning Areas







Extended Learning Areas



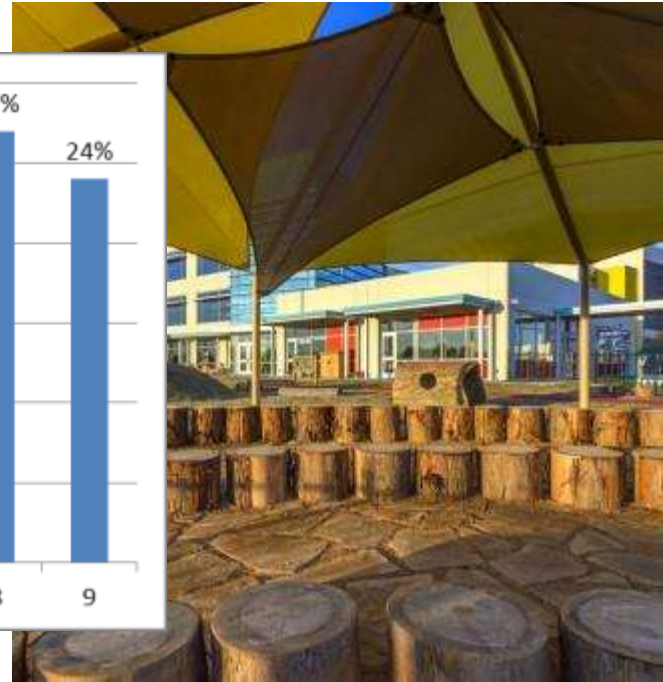
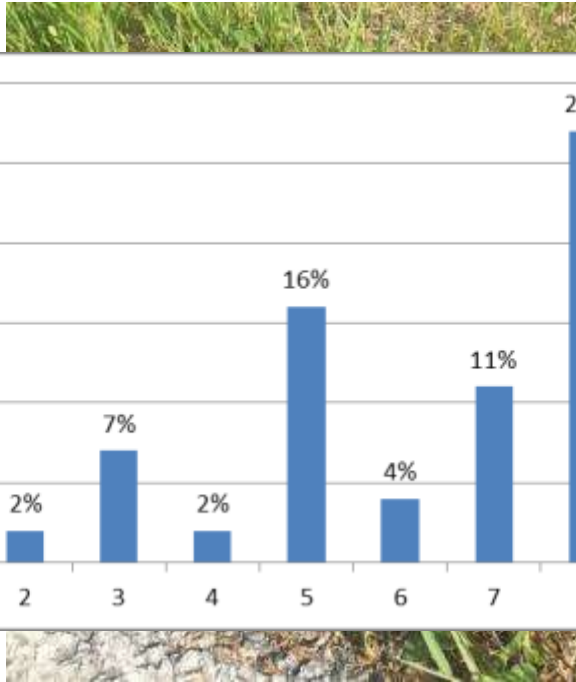
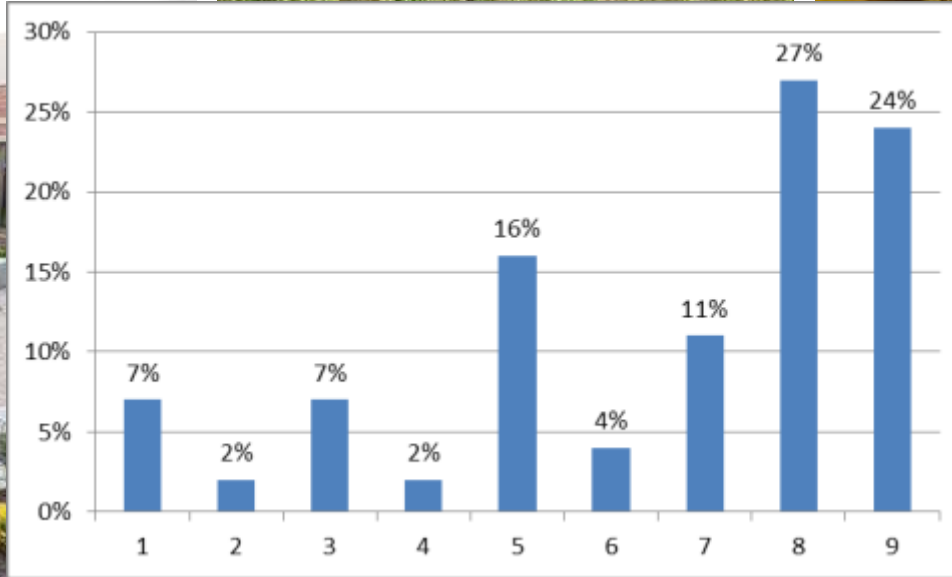
Outdoor Learning







Outdoor Learning



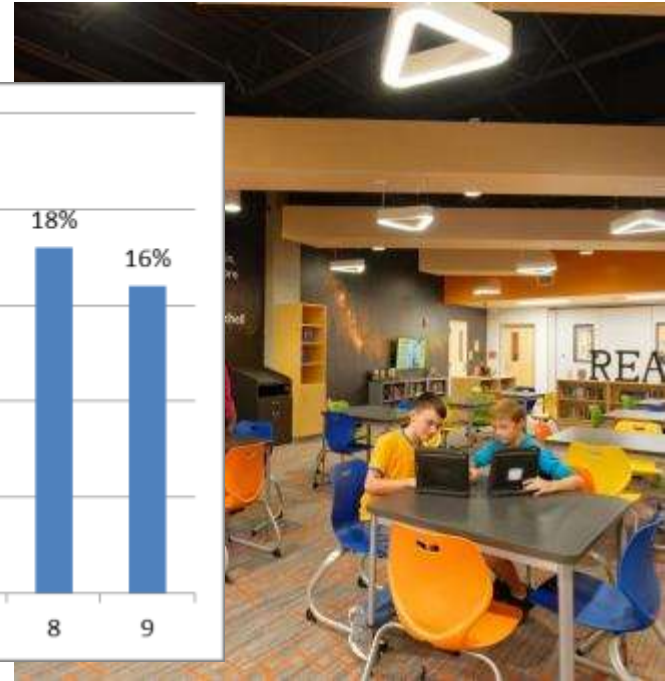
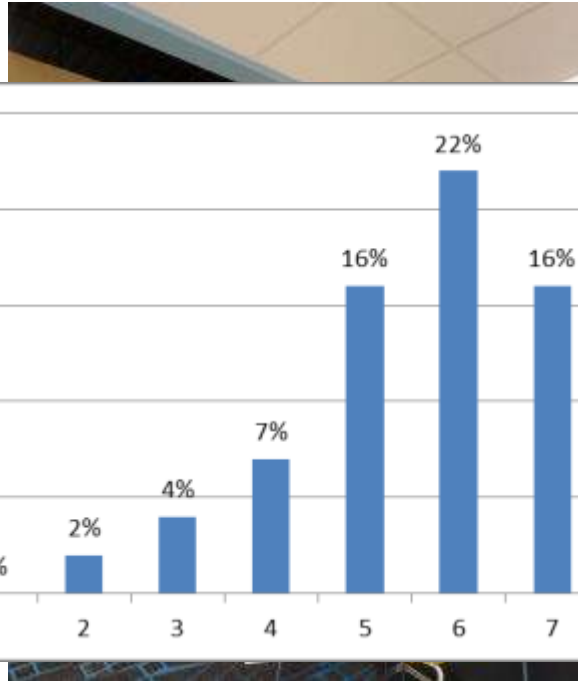
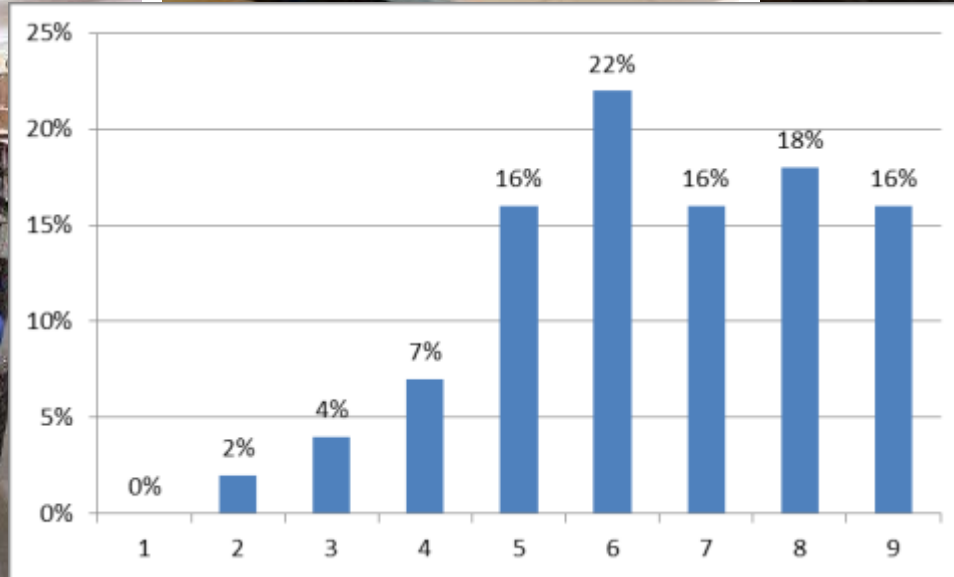
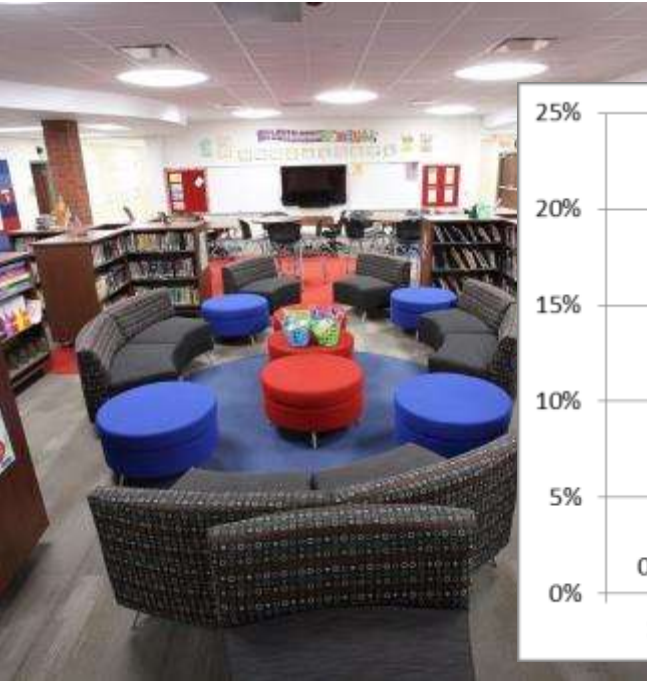
Distributed Media Center Space







Distributed media center space



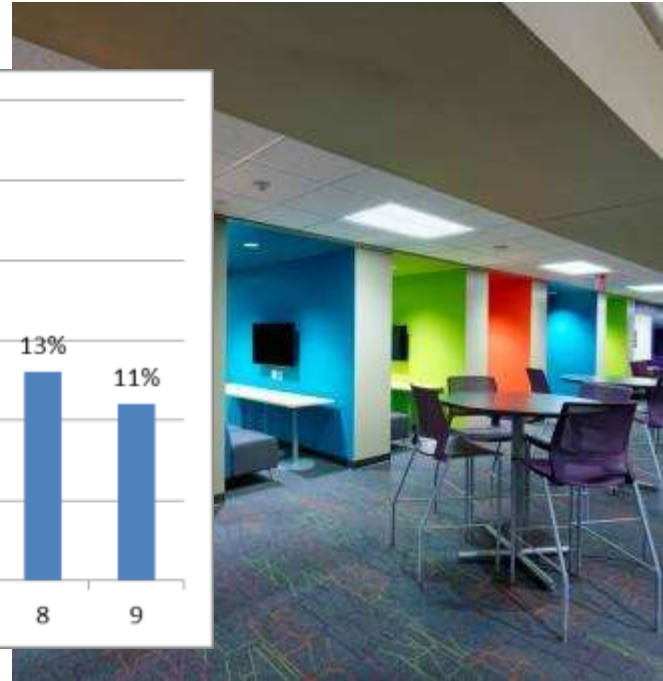
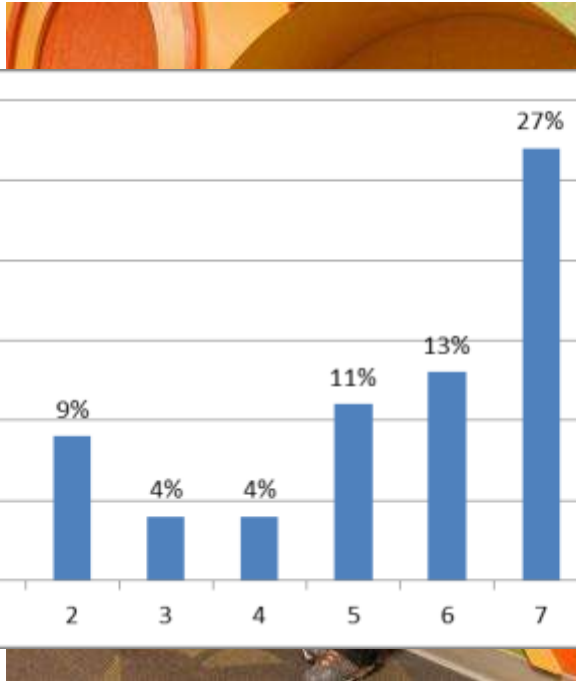
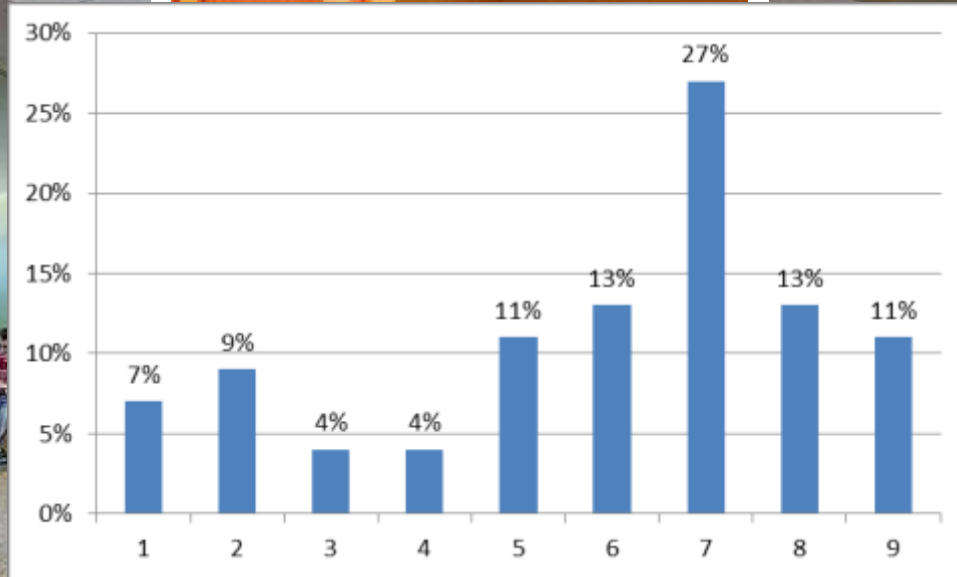
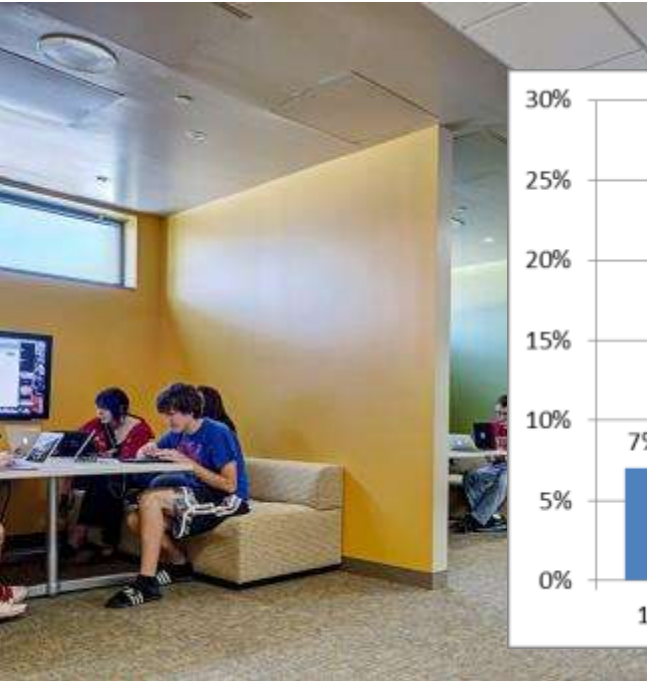
Huddle Space







Huddle Space



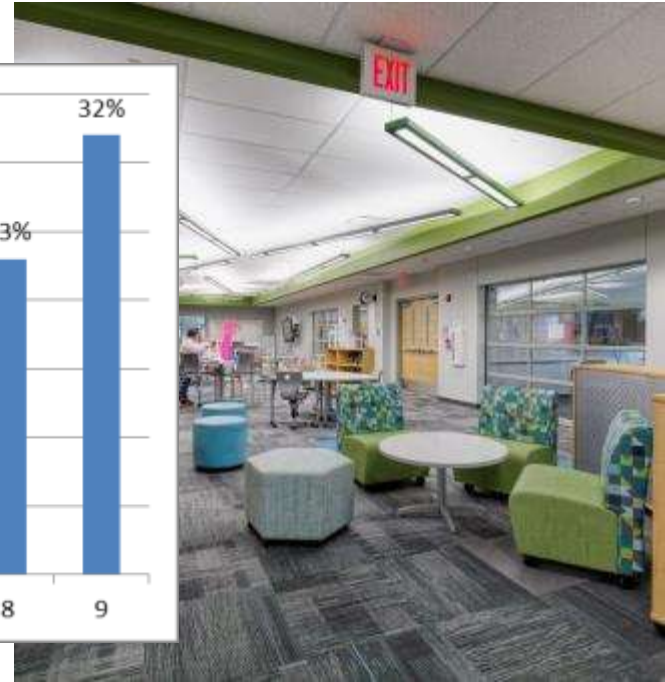
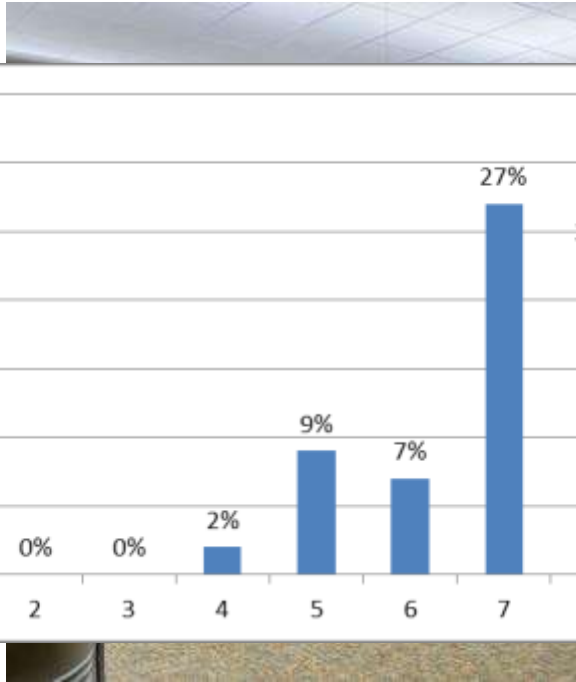
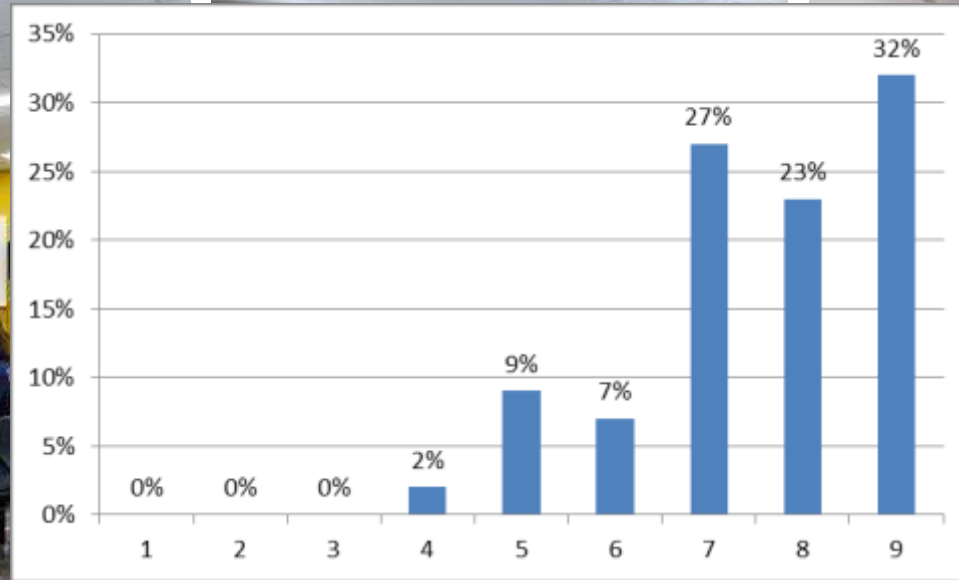
Mobile furniture for seating







Mobile furniture for seating



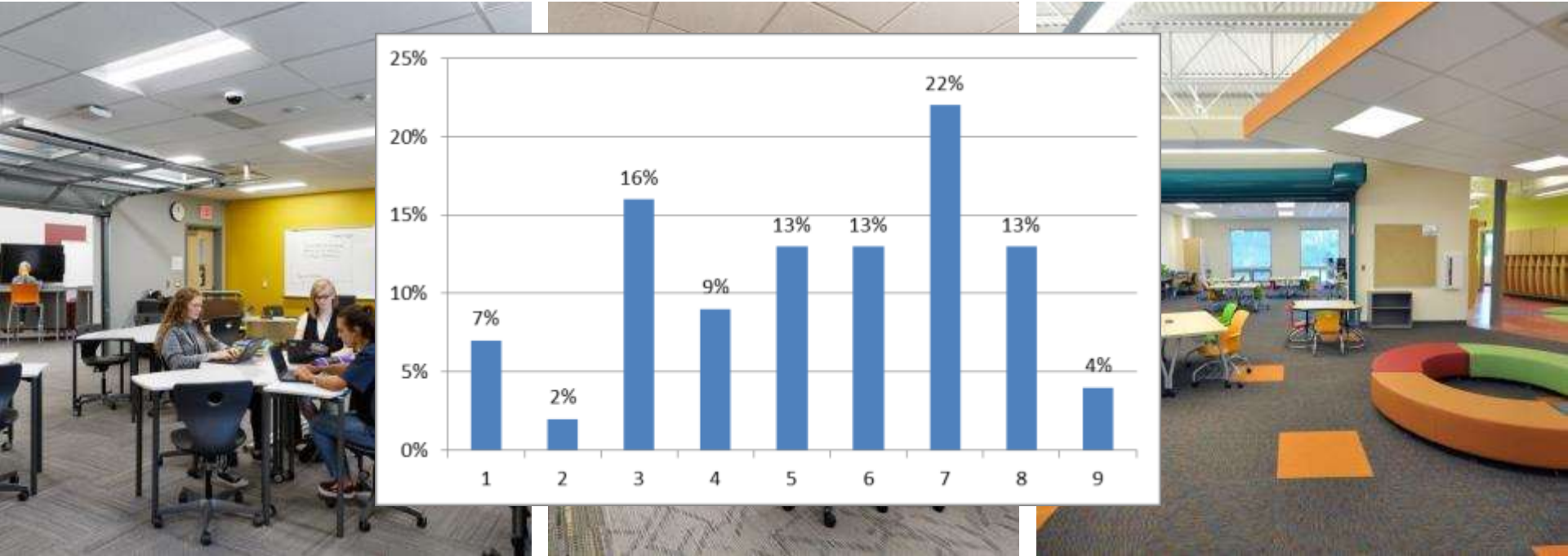
Garage doors (or large openings) in classrooms







Garage doors or large openings in classrooms



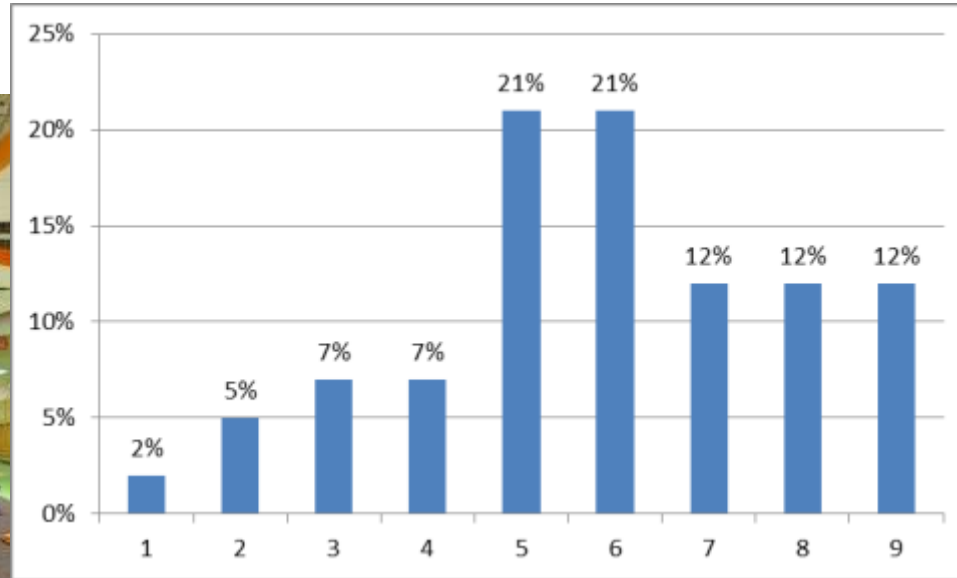
Soft and flexible furniture







Soft and flexible furniture



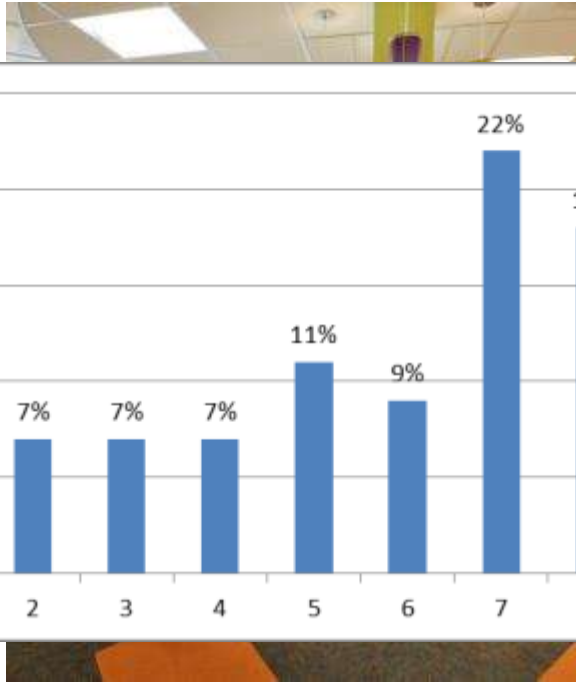
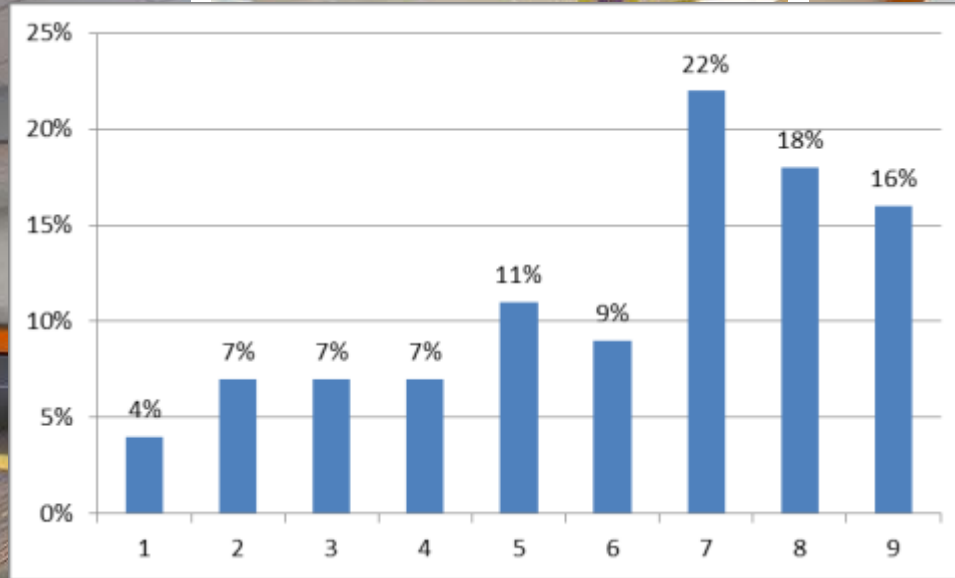
Mobile bookcases and storage







Mobile bookcases and storage



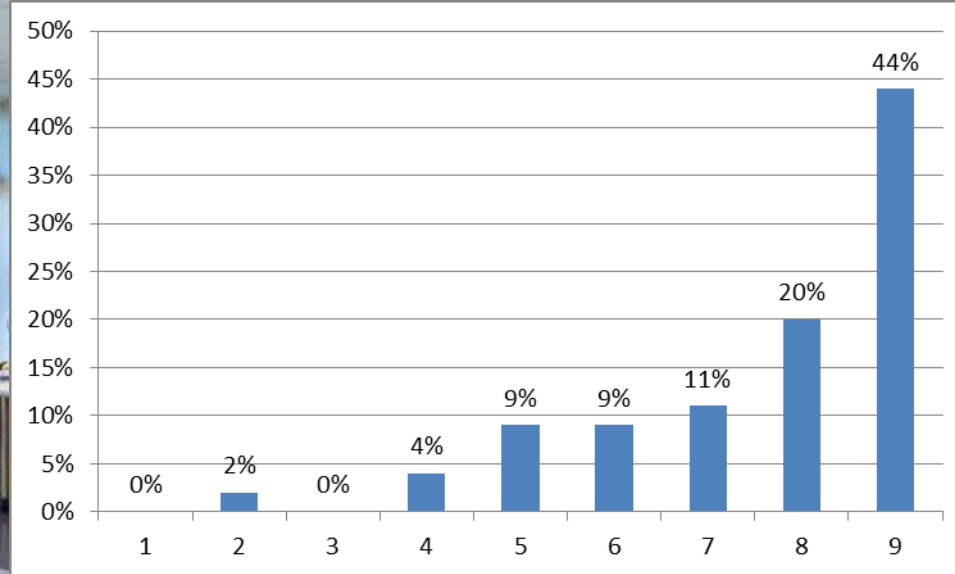
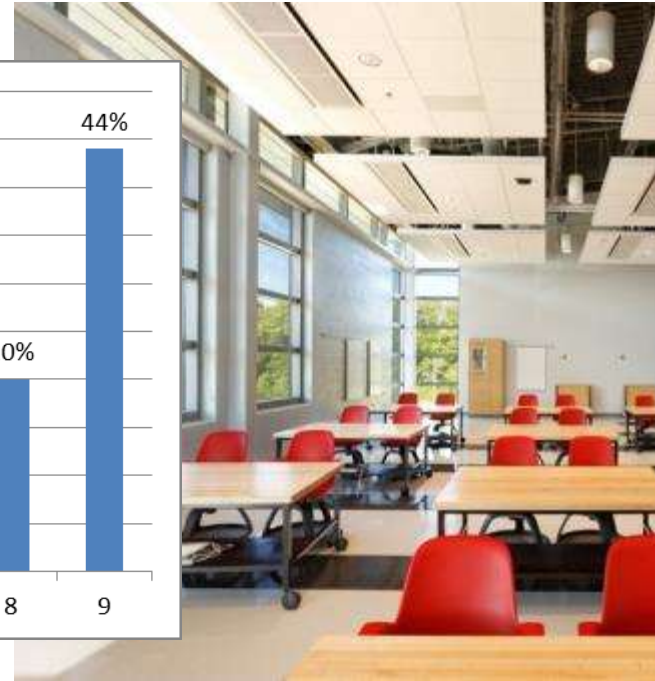
Daylighting







Daylighting



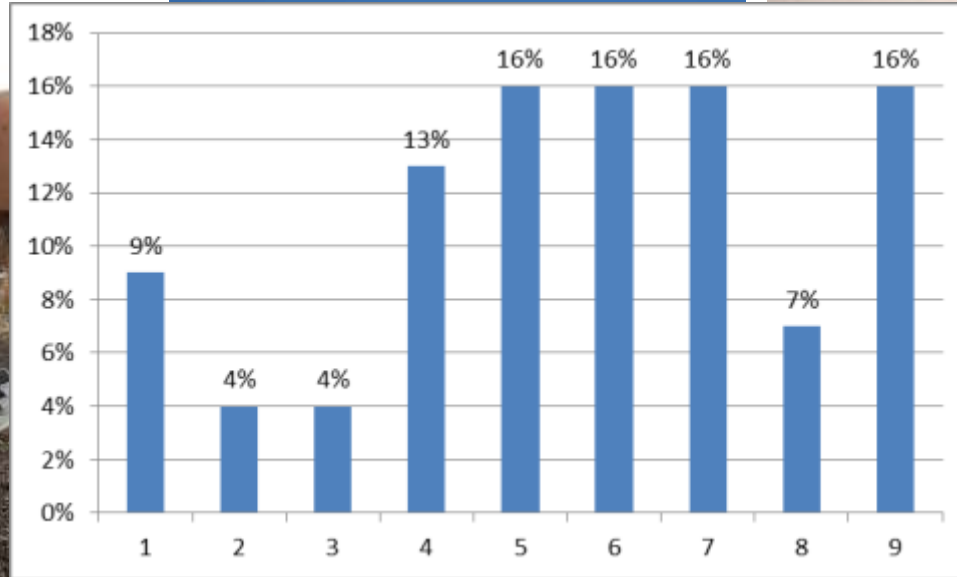
Internal courtyards







Internal Courtyards



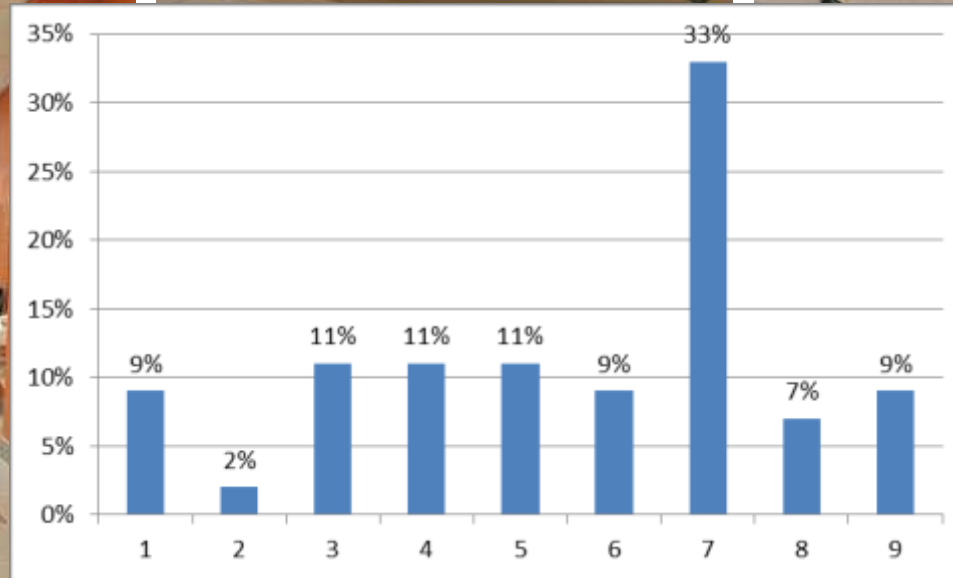
Sinks outside restrooms







Sinks outside restrooms



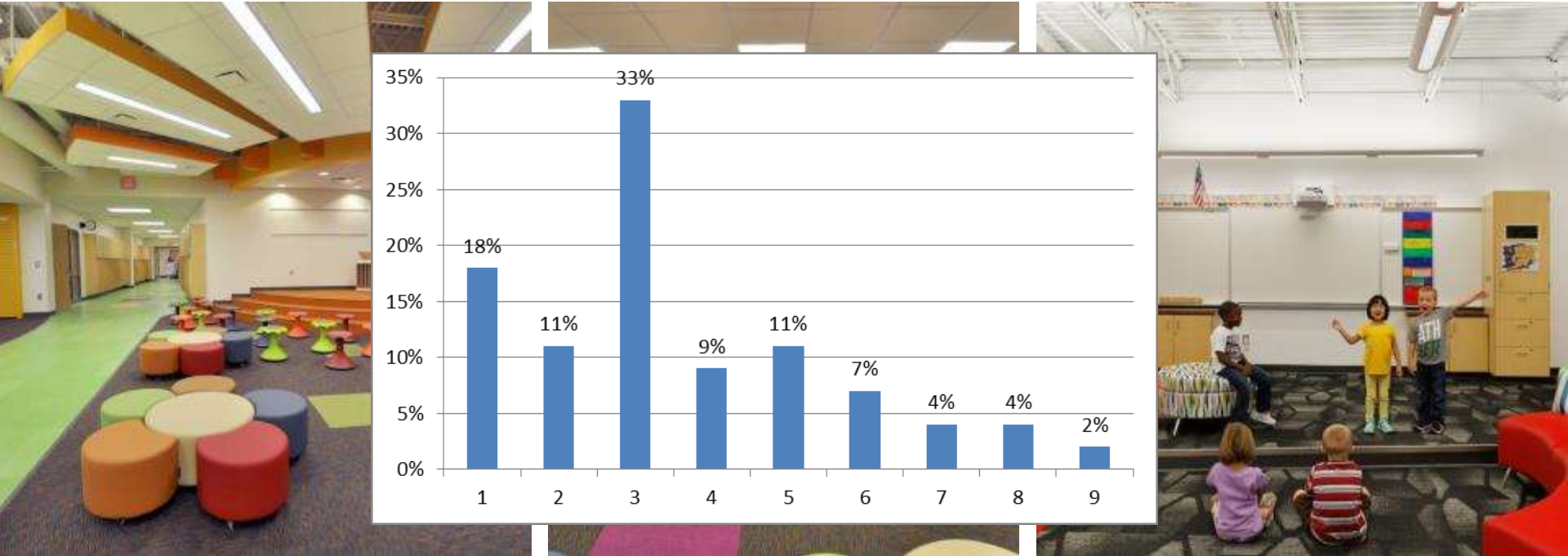
Informal platform space







Informal platform space



Celebrating our History



Urbana City Schools



East Elementary



In February of 1900, the school of East Elementary was the second of 10000 school buildings in the Urbana area. In the fall of 1900, an additional 10000 and additional were added in the spring of 1901. East Elementary school is located on the corner of 10th and 11th streets. The building was built in 1900 and is now a part of the Urbana City Schools.



Local Intermediate

On August 15, 1900, the Urbana Board of Education passed a resolution, giving \$10,000 to build an addition to the high school. The building was planned to provide classrooms for manual training, laboratories for science, physics and chemistry, and physical education. The building, completed in the fall of 1900, is a three-story brick building, with a central entrance and a large tower.



Urbana High School

In 1904, a three-story brick structure was built for the high school in the northeast part of town, then known as the High Woods. The original high school, built at a cost of \$60,000, was destroyed by fire on December 15, 1908.

Following the fire of 1908, a new high school, affectionately known as the Castle on the Hill, was constructed and began serving students in 1909. Early on the morning of December 13, 1900, the building was ravaged by fire on the 34th anniversary of the burning of the original high school building. A three-story addition, completed in 1902, included a cafeteria, library, administration offices, and home economics area. Dedication ceremonies were held on April 20, 1909, for the new high school gymnasium-addition. Built at a cost of \$201,150, the bathroom of the structure included areas for the industrial arts program, vocal and instrumental music, and locker rooms for physical education. With the acceptance of the Urbana Local School District into the City School system in May of 1960, what became known as the East Building of the High School was built to house additional classrooms and the vocational agriculture program.



North Elementary

In 1902, the school building in the North Elementary was built. In 1907, it was added and added to the building. The building was built in 1902 and is now a part of the Urbana City Schools.



South Elementary

In 1900, the school building in the South Elementary was built. In 1907, it was added and added to the building. The building was built in 1900 and is now a part of the Urbana City Schools.



West Elementary

In 1900, the school building in the West Elementary was built. In 1907, it was added and added to the building. The building was built in 1900 and is now a part of the Urbana City Schools.



Urbana Junior High



1958 Addition



Old High School



1881 - 1945

J.J. Jones & Sons Axe Handle Factory. The popularity of the factory led the B&O Railroad to nickname the town "Axe Handle Junction." J.E. Jones was superintendent of the Columbus Grove school.

1851

The land that would be called Columbus Grove was a natural sugar maple grove on the sand ridge at the edge of the Great Black Swamp. The sugar grove was a common destination for the Native tribes of Northwestern Ohio including the Ottawa, Seneca, Delaware, Chippewa, Potawatomi and Shawnee Tribes.

In 1851, William Vansey, along with his wife and four children left Groveport in Truro Township in Franklin County, Ohio near Columbus. They traveled footpaths made by the Native tribes to the sand ridge and settled a plot of land one mile west of what is now Columbus Grove. Later that year, the Vanseys were joined by the Henry Maers, William McDuffy, McDuffie, Claborn and James Boston families. The settlement was called Columbus Grove.



c. 1851 Looking north on South High Street.

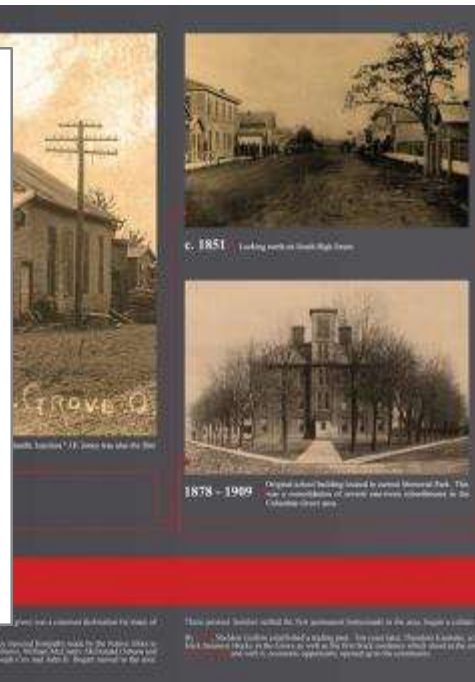
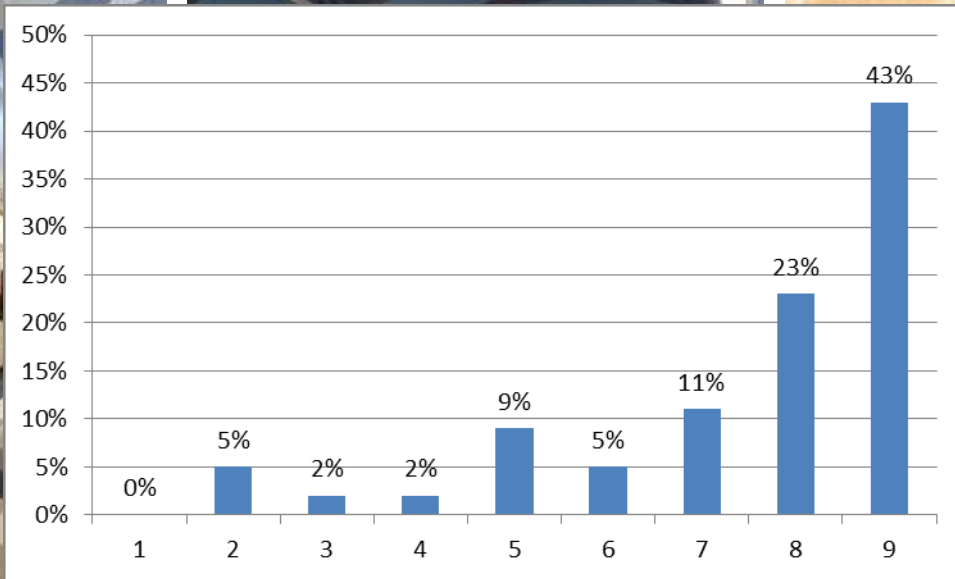


c. 1900 South High Street.



In 1861, Sheldon Guthrie established a trading post. Ten years later, Theodore Kurneko, a German immigrant, started a mill for local farmers. Kurneko would go on to build two impressive brick business blocks in the Grove as well as the first brick residence which stood at the corner of West Syracuse and North Broadway Streets. The first railroad whistled through town on and with it, economic opportunity opened up in the community.

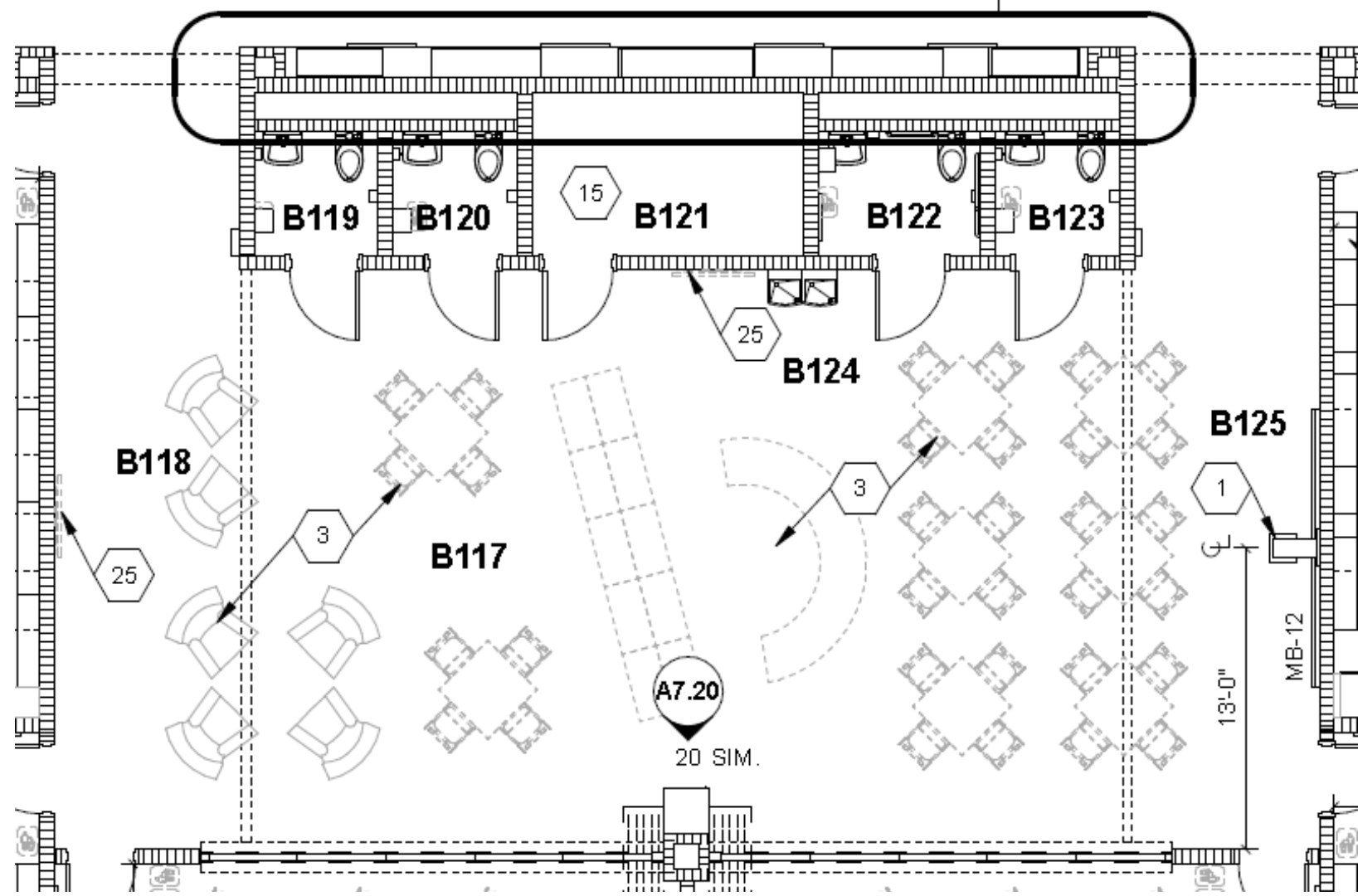
Celebrating our history



Student restrooms - Individual vs Group



Northwood PK-12



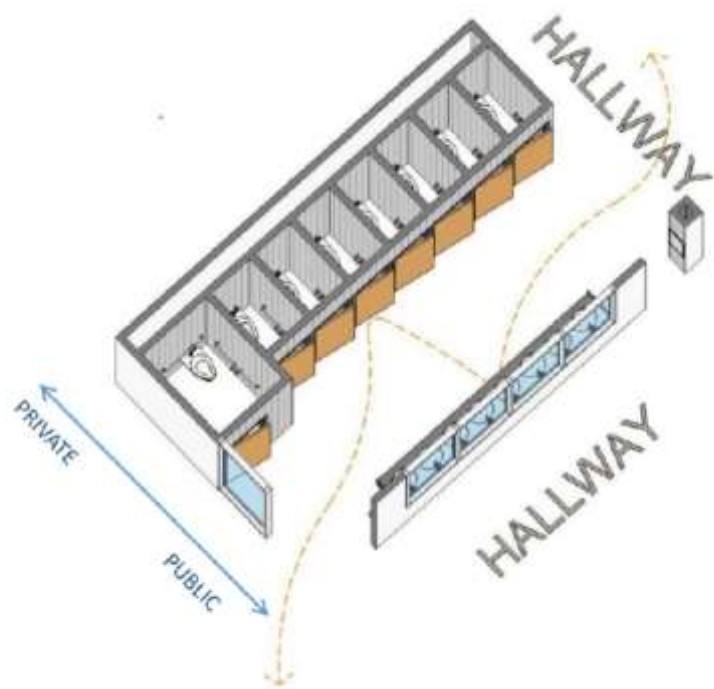
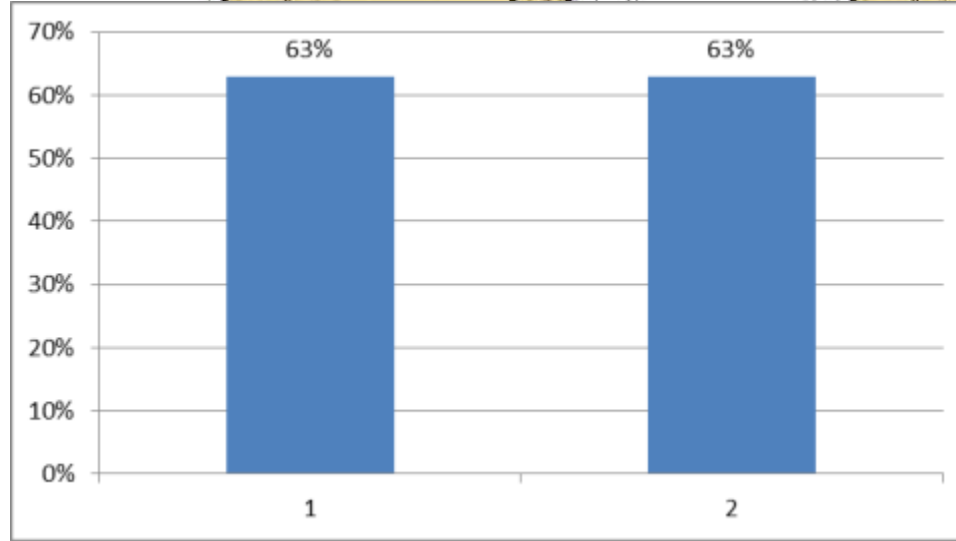


Figure 4: Inclusive restrooms are designed with full height acoustic partitions, photo of SPPS St. Anthony Park Elementary School.

Cunningham Group; Inclusive Restroom Design Guide

Individual RR
MS & HS %
(same)

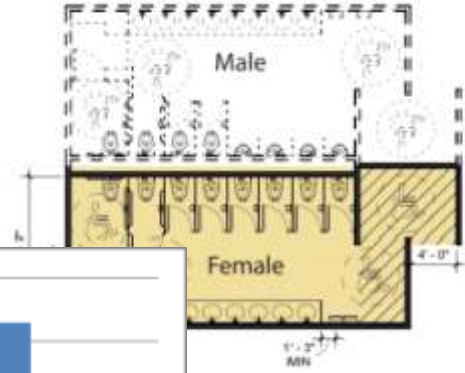
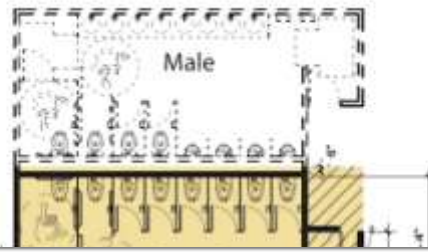


INCLUSIVE RESTROOM W/ OPEN ENTRY

- Total Area - 407.29 ft²
- Vestibule - N/A

INCLUSIVE RESTROOM W/ OPEN ENTRY

- Total Area - 407.29 ft²
- Vestibule - N/A



OPEN VESTIBULE
- 443.45 ft²
90.53 ft²

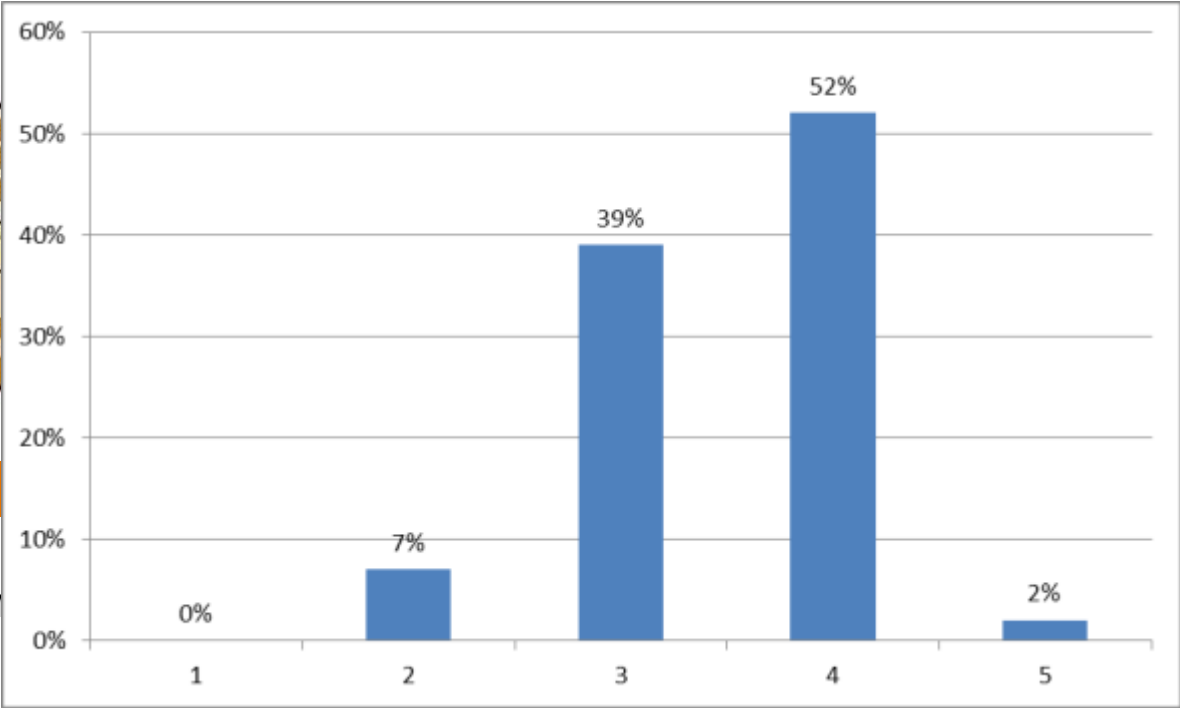


Design Considerations

Educational Visioning



Tradition



Informational

Thank you!