



Margaretta

Local School District

Facility Planning Committee Meeting



October 17, 2018


FANNING
HOWEY

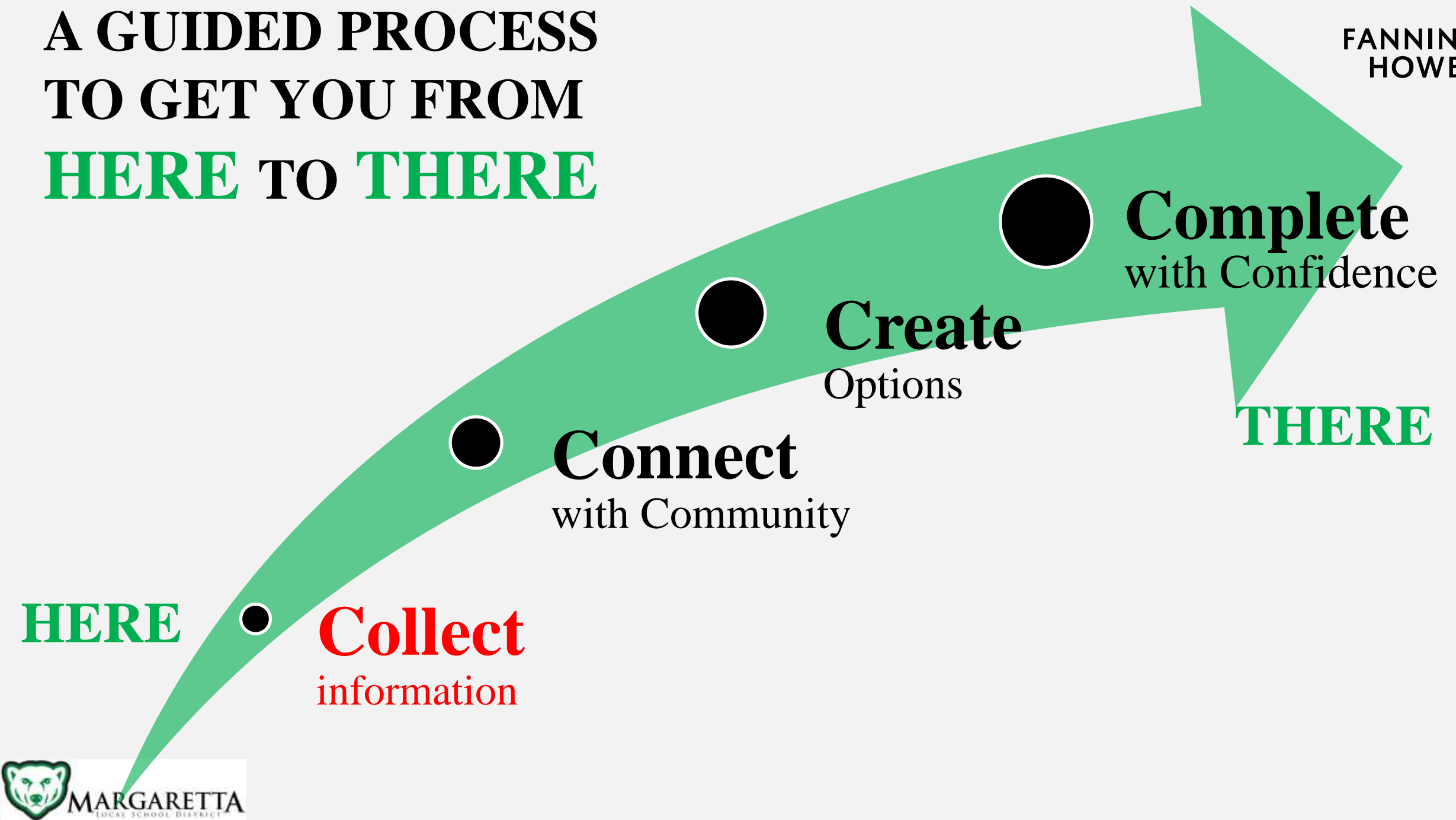
Thank you for coming!

Goals for today:

- Introductions
- Overview of the process
- Background information
- Identifying key issues
- Getting your feedback
- Planning for a Community Meeting on **November 5th**

A GUIDED PROCESS TO GET YOU FROM **HERE** TO **THERE**

FANNING
HOWEY



HERE: Margareta Local School District

FANNING
HOWEY

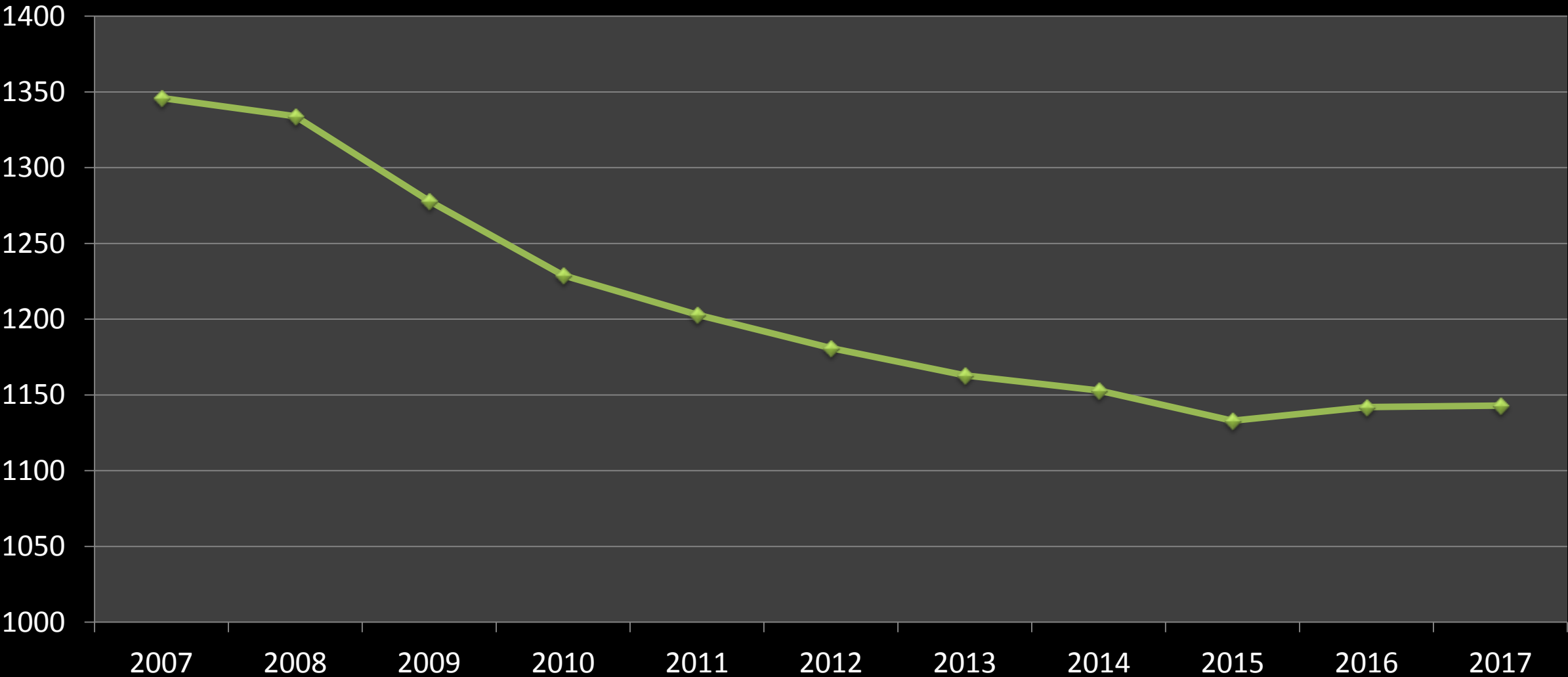
- 2 schools (6-12, PK-5) on 2 sites;
built in 1913 and 1959
- 97 Acre site
- Townsend Community School
(on HS campus)
- Currently around 1,150 students
- Visited 20+ schools
- Pipeline Funding



Enrollment History



10 year Enrollment projections will be updated



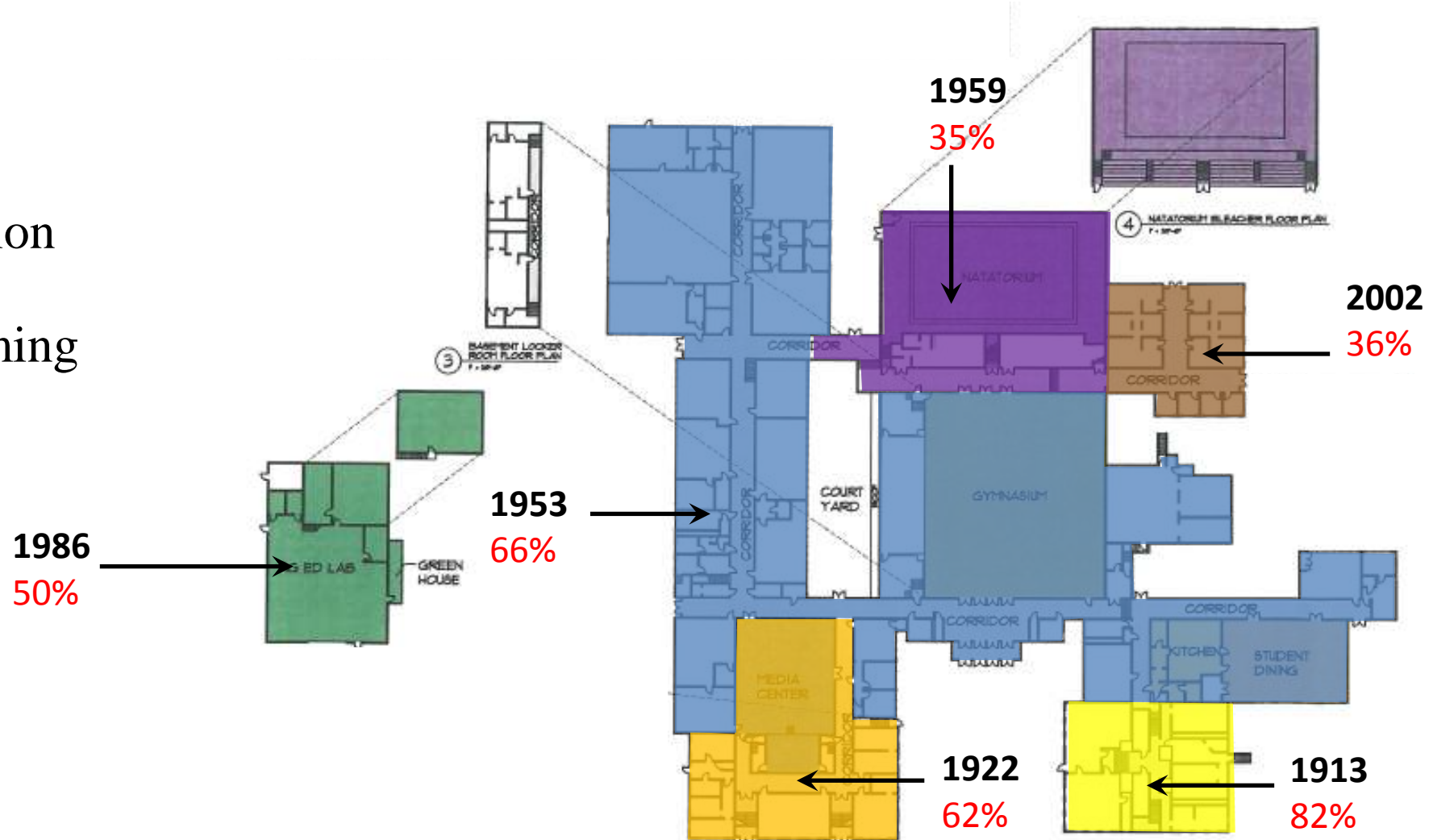
High School Site analysis

- Crowded site
- Limited access from roads
- Inadequate parking
- Lack of space for drop-off and pick up
- Poorly located public entrance
- Shared site
- Bedrock 2-4' below surface
- No storm water retention
- Limited area for construction



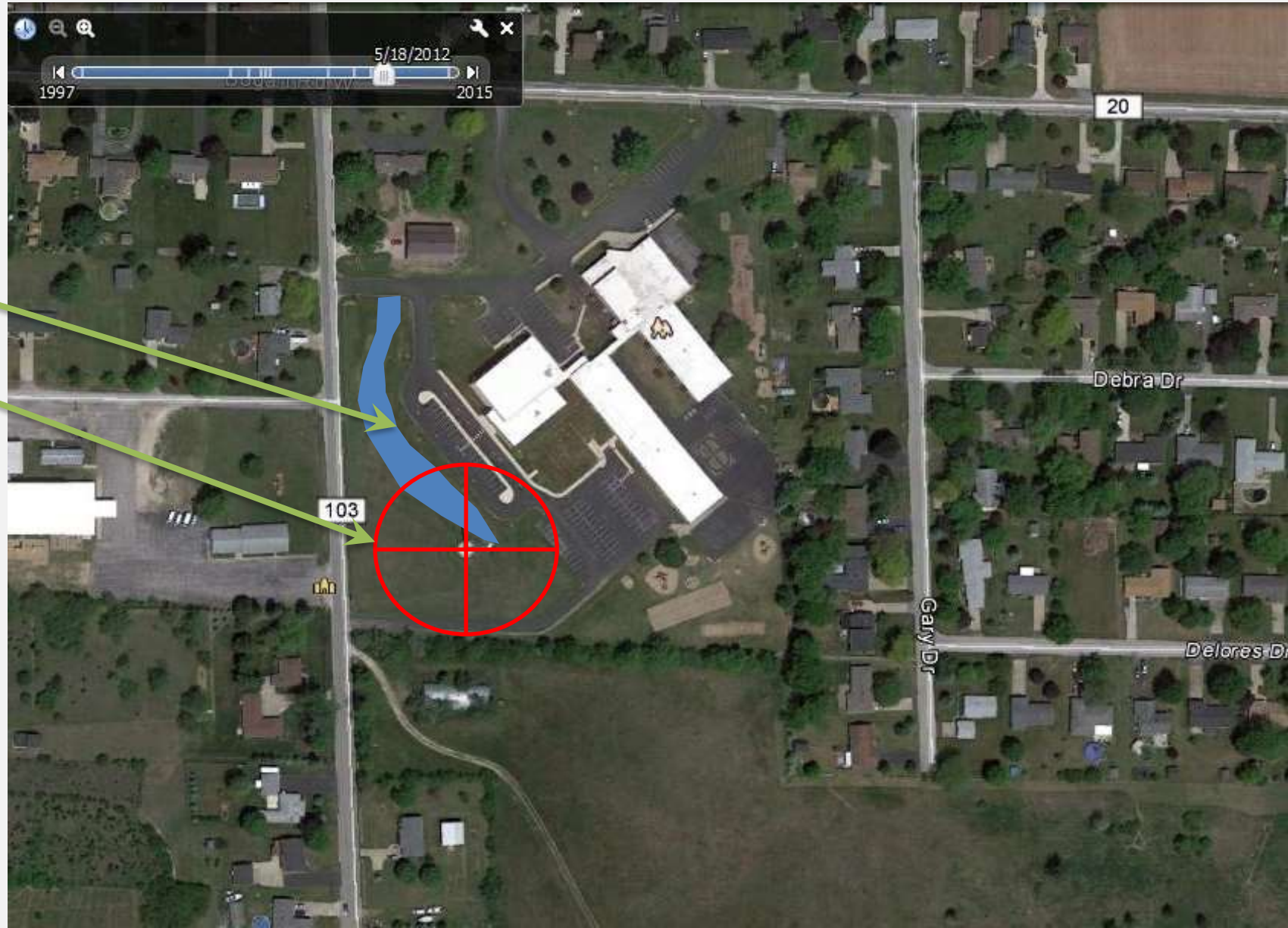
High School Assessment

- Review
- Verification
- Cost validation
- Reprogramming



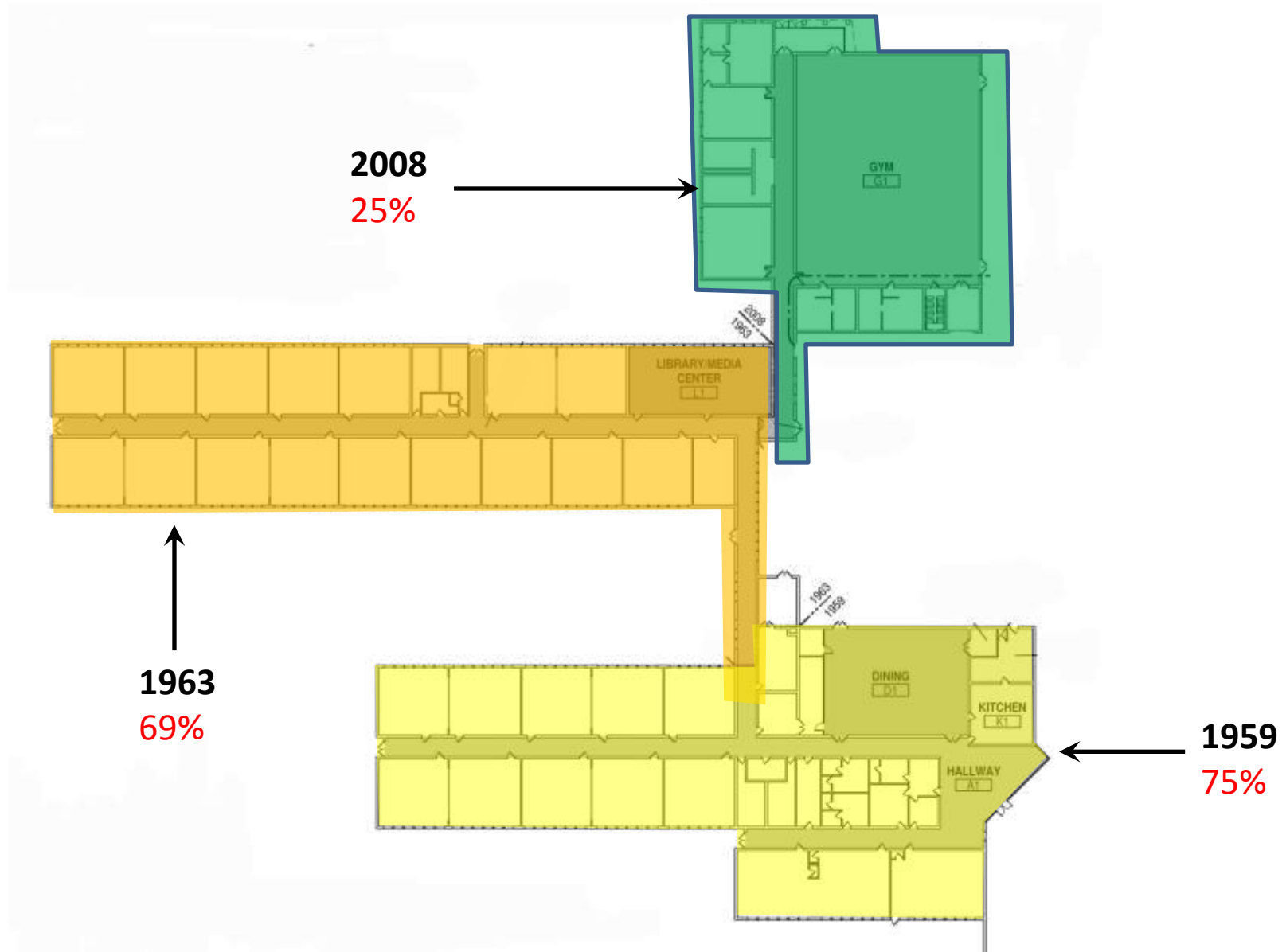
Elementary Site analysis

- Limited area for play
- Good separation of cars and Buses
- Storm water detention
- Wind Turbine fall zone
- Bedrock 2-4' below surface
- Limited area for construction



Elementary School Assessment

- Review
- Verification
- Cost validation
- Reprogramming



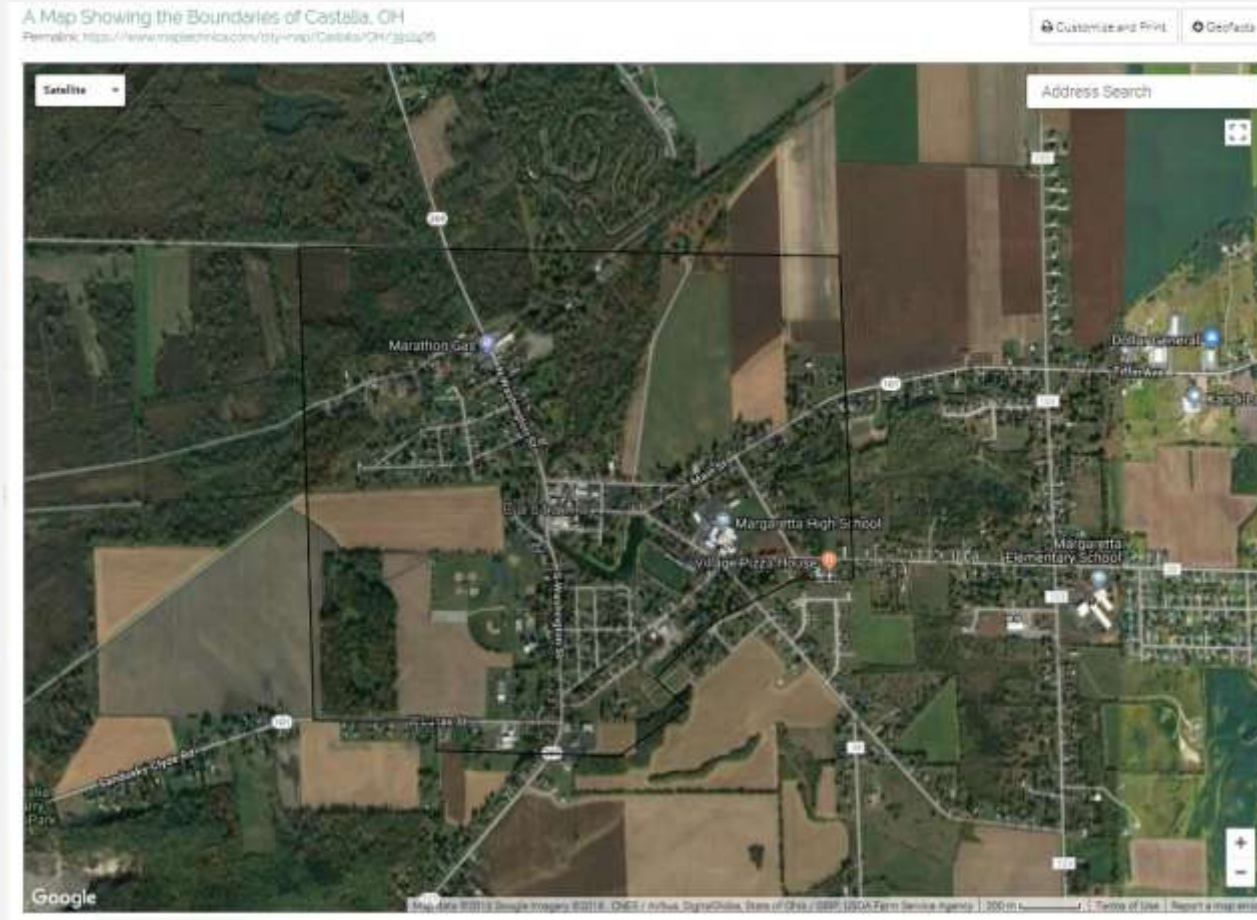
97 Acre Site analysis

- Adequate size – 97 acres
- Good access
- Ability to separate buses and cars
- Space for future growth
- Attractive natural area to support curriculum
- 50 mph speed limit
- Village/ODOT





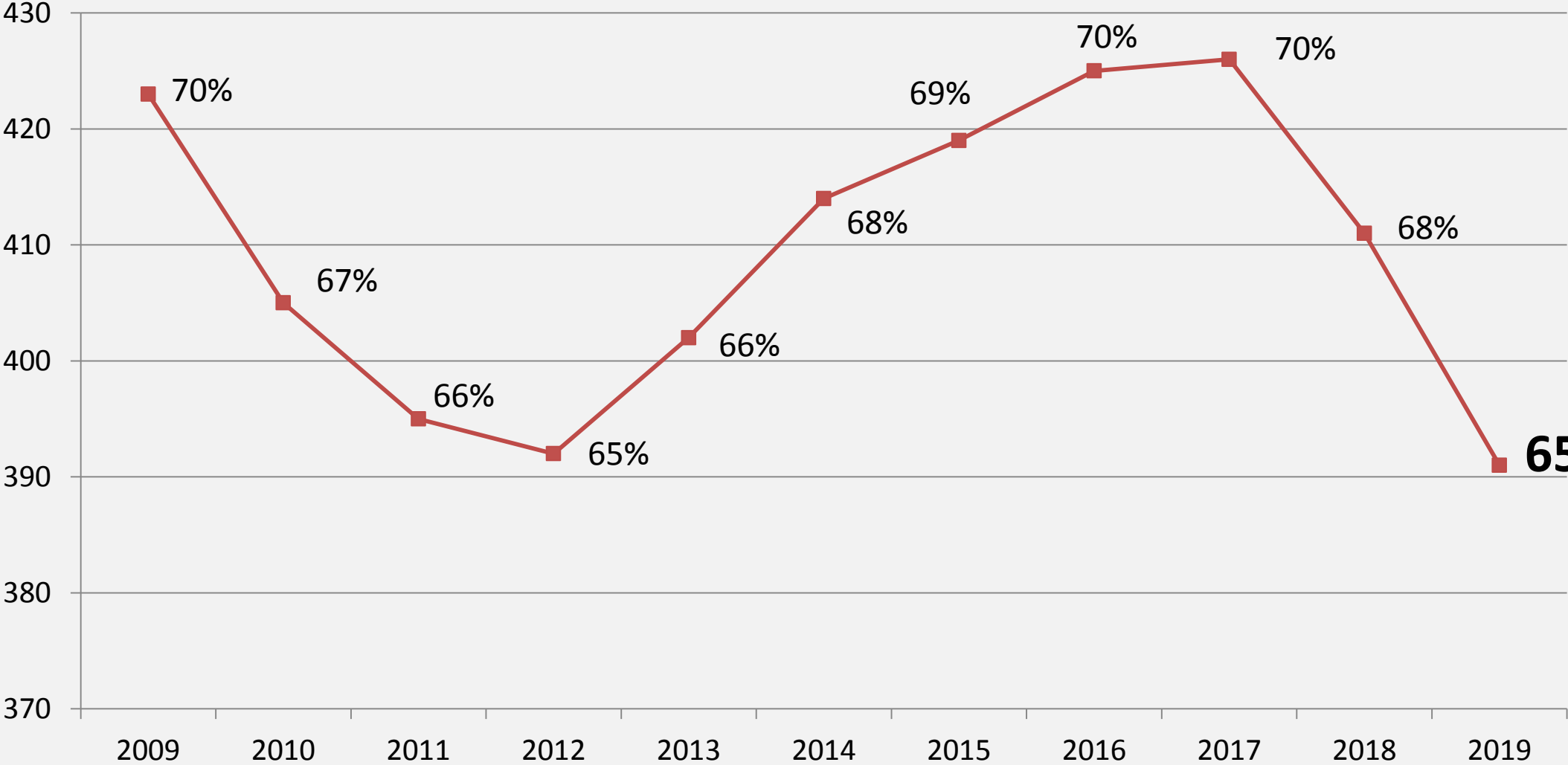
**FANNING
HOWEY**



OFCC Background

- Margareta Local Schools has an OFCC Equity Rank is #391 out of 610 school districts in the State of Ohio
- The Equity rank determines eligibility for the OFCC CFAP program (Classroom Facility Assistance Program)
- $391 / 610 = 65\%$ Local funding / 35% State funding for an OFCC project
- Participation with OFCC is a district choice
- OFCC cannot guarantee when their funding will be available

OFCC History



**FY-19
#391
65% local
share**

Needs – Group discussion

What are the biggest facility related needs?

Identify and document ideas with your group



Building Configuration

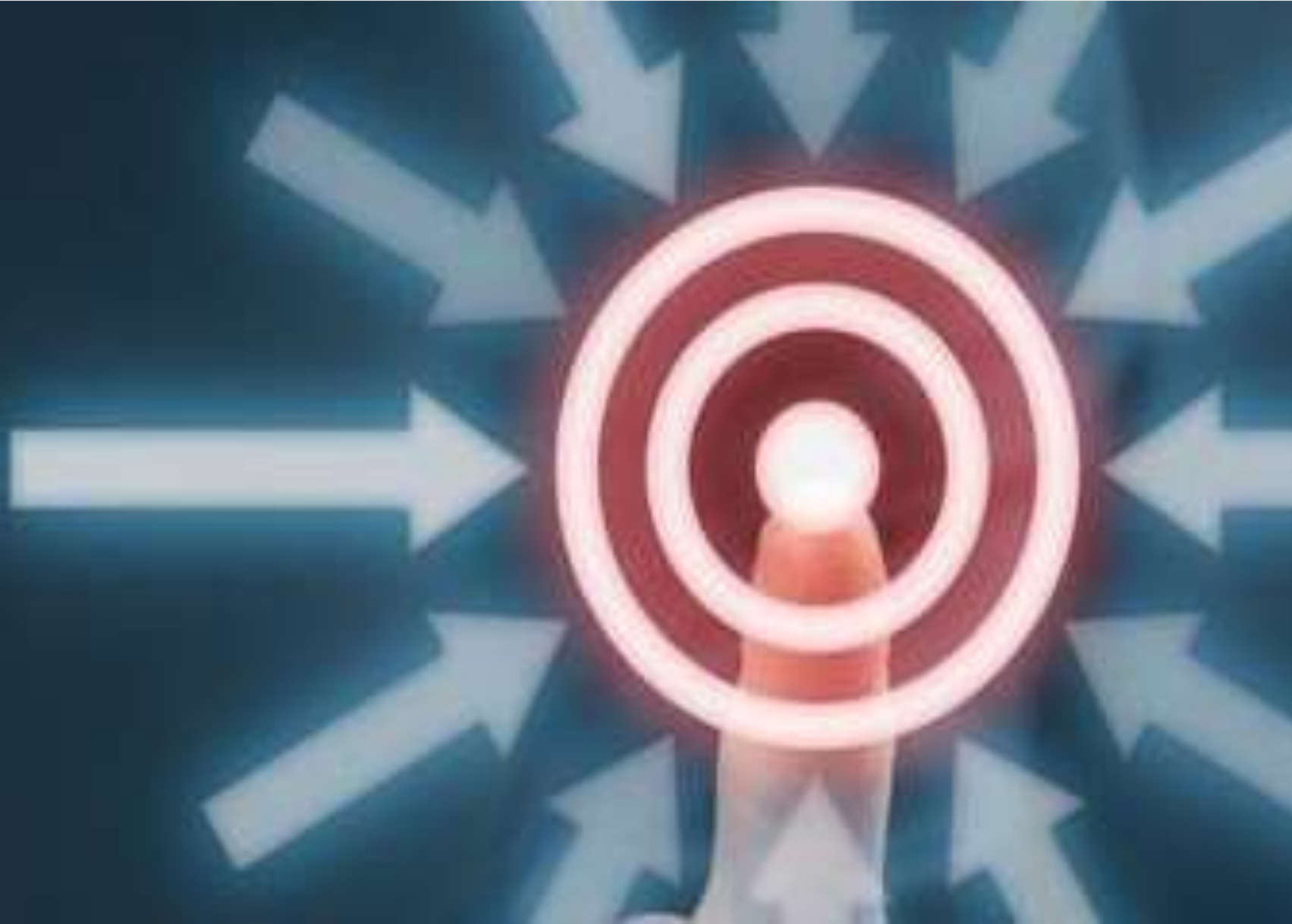
Site Selection

OFCC considerations

Locally Funded Initiatives

Educational Delivery

Funding/Nexus Pipeline



Building Configuration options

Current Configuration

- Margareta Elementary : PK-5
- Margareta Middle/High : 6-12

Potential Configurations

- PK-12
- PK-4 + 5-12
- PK-5 + 6-12

High School Site Selection Dialogues

- Build 5-12 or 6-12 on practice fields?
- Possible 2-phase construction with Elementary site?
- Townsend use of 1953 classrooms?
- Maintain gym and pool?



Elementary School Site Selection Dialogues

- Renovate?
- Partial demolition?
- Sell?
- Community use?
- Board office?



97 Acre Site Selection Dialogues



- More than adequate space for any new construction option



OFCC Considerations

- OFCC funding is not immediately available. 2-5 years?
- State share funding of 35% +/-
- Potentially higher cost
- Have to follow OFCC guidelines
- Longer review and design process
- Must use a Construction Manager
- Must follow LEED requirements

Locally Funded Initiatives with OFCC

- Additional square footage
- Material or system upgrades
- Site Conditions
- Maintaining portions of existing buildings
 - High school gym
 - High school pool
 - Elementary school gym
- Additional seating in competition gymnasium
- Building artifacts
- Performing Arts



Educational Delivery

Bellevue



Eastwood



Northwood



TRADITIONAL SCHOOLS

21ST CENTURY SCHOOLS



Carey

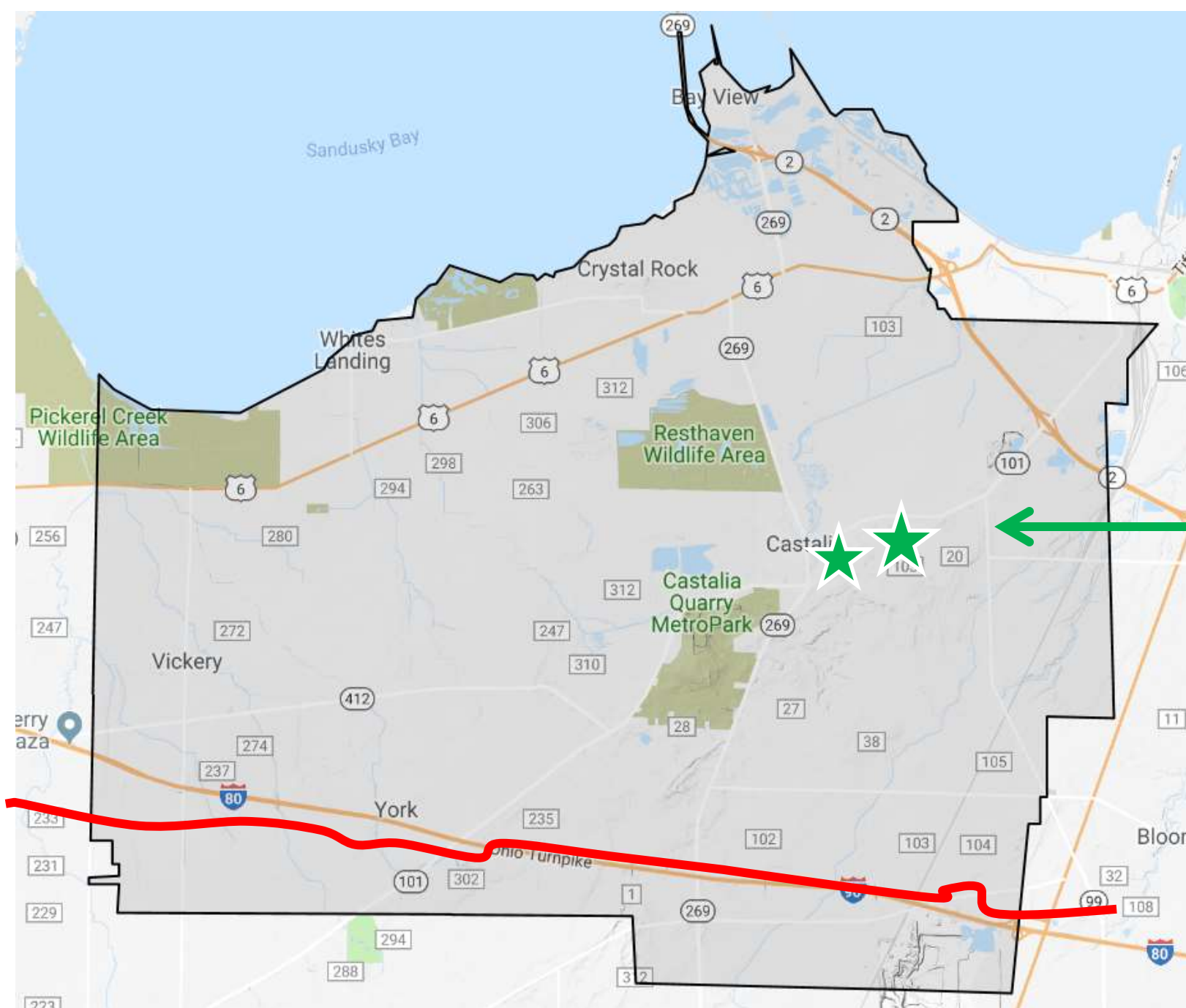


Middletown



West Muskingum

Pipeline Funding



School
Locations

Approximate
path of
NEXUS
pipeline

Issues – Group Discussion

Funding

Site Selection

Building Configuration

Level of Flexibility

OFCC decision

Locally Funded Initiatives

What else?



Next Steps

- Community Meeting November 5 at 6:30pm
 - Location - tbd
- Future Meetings
 - Master Plan options
 - Building Tour likes/dislikes
 - Educational Delivery