

Sylvania  
City Schools  
Master  
Facilities  
Plan

Board of Education Presentation

February 2025



## Agenda

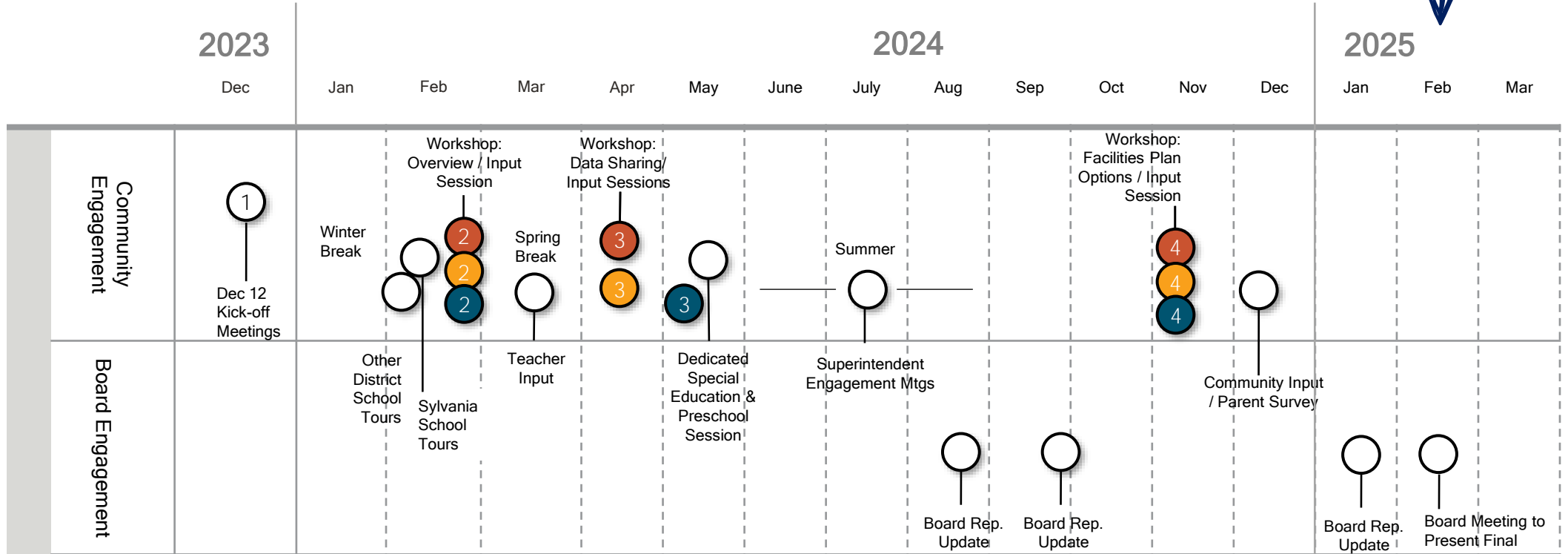
- 1 Process Overview
- 2 Enrollment Trends & District Capacity
- 3 A Flexible Framework for Accommodating Growth
- 4 Infrastructure & Learning Environments
- 5 Next Steps

## Agenda

- 1 **Process Overview**
- 2 Enrollment Trends & District Capacity
- 3 A Flexible Framework for Accommodating Growth
- 4 Infrastructure & Learning Environments
- 5 Next Steps

We are here

Planning Process



- Current & Future Facilities
- Teaching & Learning Environments
- Fiscal Responsibility



# THE COLLABORATIVE

## Planning Process



Facilitated a **1+** year-long planning process



Held **25+** meetings / information sessions



Conducted **3** online surveys (district parents/guardians, teachers, staff)



Gathered input from **over 1,700** individuals throughout the district

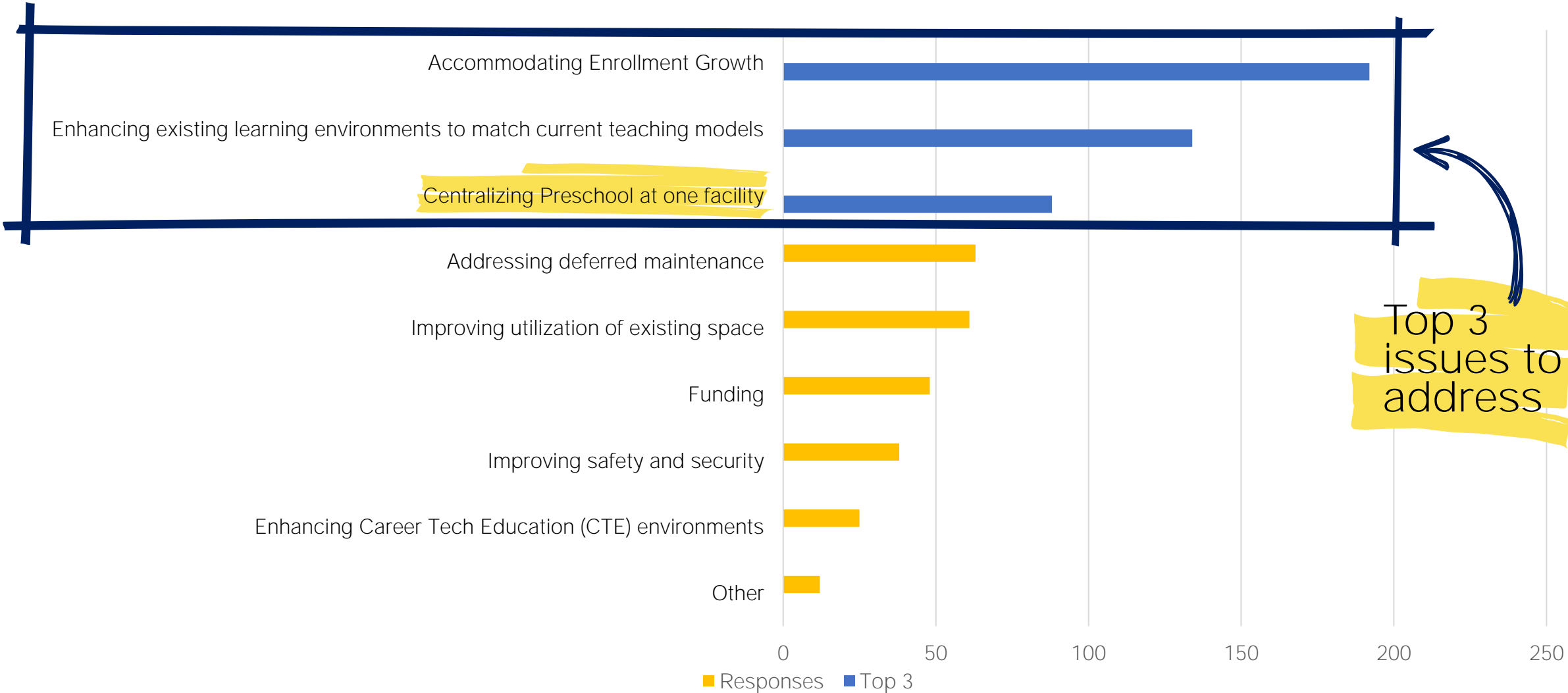


Commissioned **2** Enrollment Projection Studies performed by PowerSchool



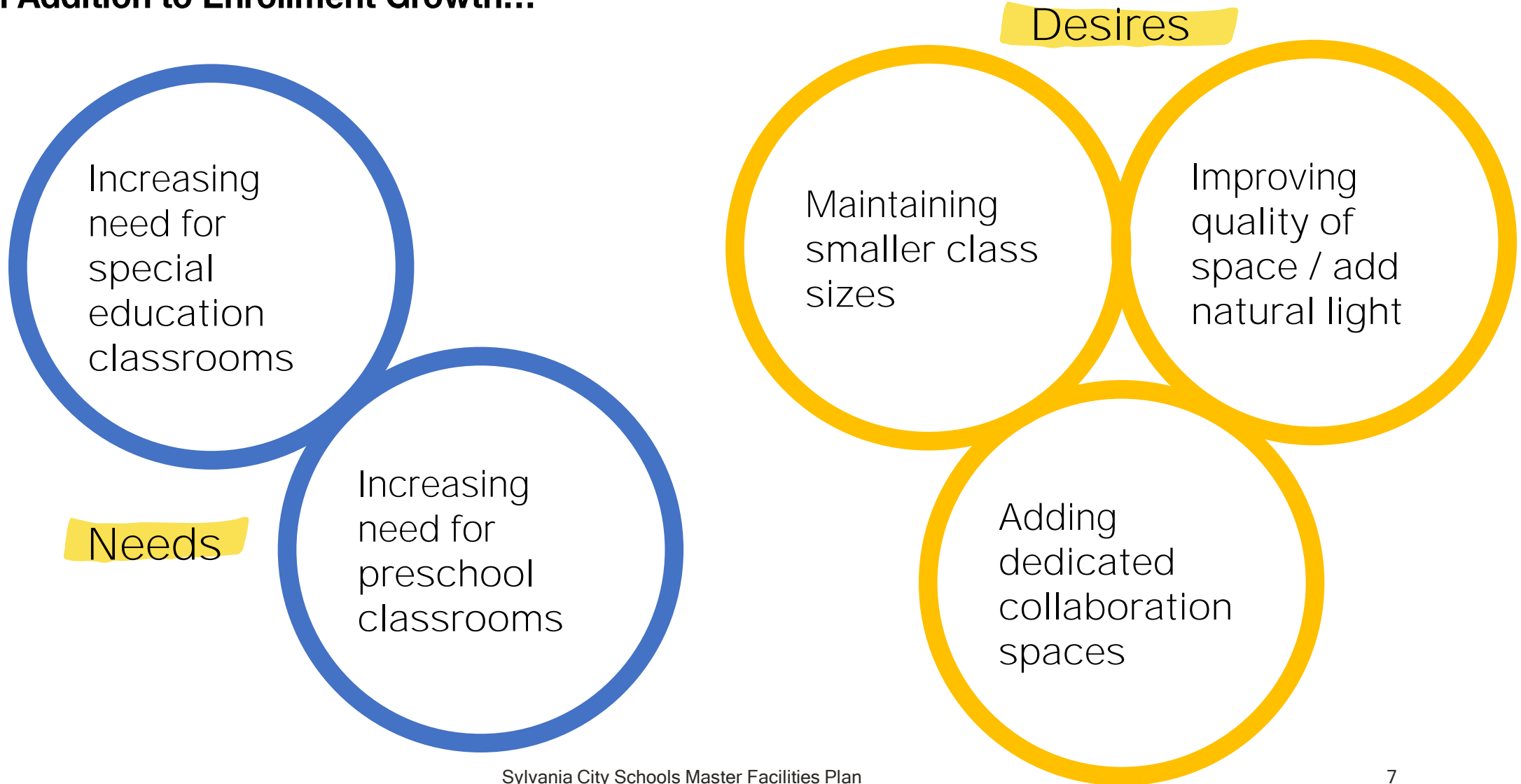
What we heard - Main Issues to Address

What are the top three issues this Master Facilities Planning process should address?



### In Addition to Enrollment Growth...

Master Plan Issues

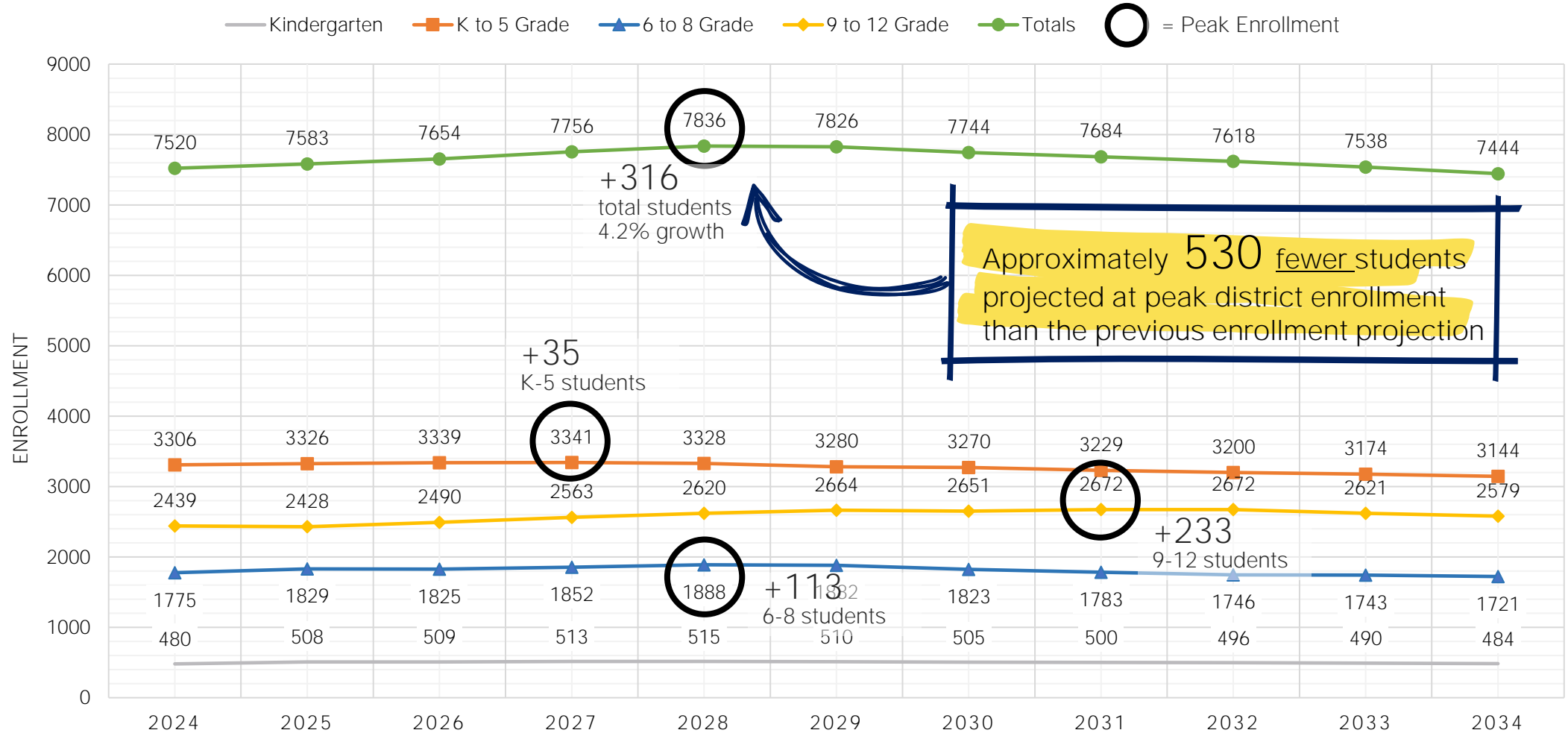


## Agenda

- 1 Process Overview
- 2 Enrollment Trends & District Capacity**
- 3 A Flexible Framework for Accommodating Growth
- 4 Infrastructure & Learning Environments
- 5 Next Steps



### K-12 Enrollment (Moderate Approach)



\* Moderate projection is more suitable for facilities planning purposes

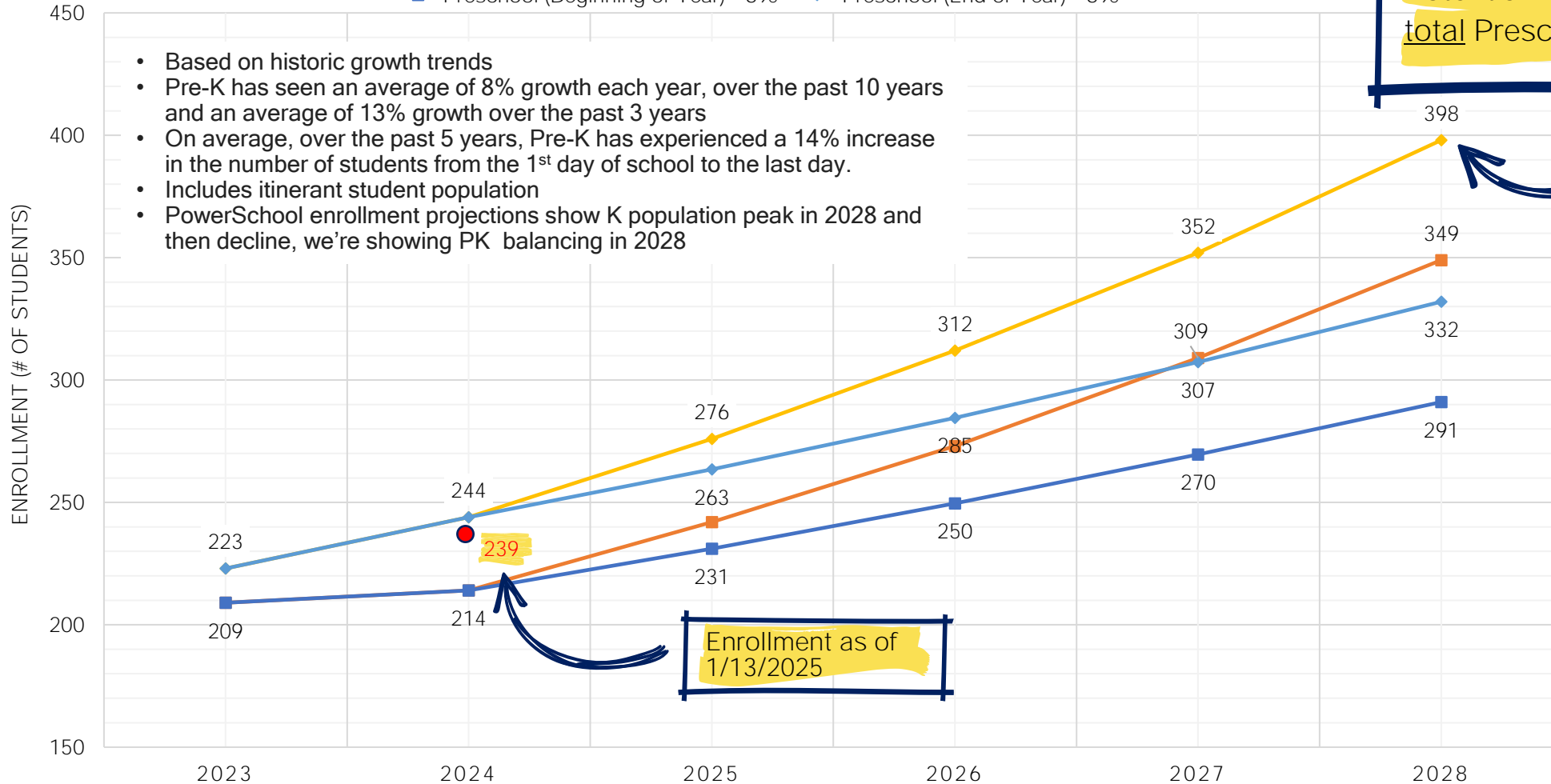
\* Doesn't include Preschool

*Analysis of Enrollment Projections 2025 by PowerSchool (Nov 2024)*

### Preschool Enrollment Trend

■ Preschool (Beginning of Year) - 13%    ◆ Preschool (End of Year) - 13%  
■ Preschool (Beginning of Year) - 8%    ◆ Preschool (End of Year) - 8%

- Based on historic growth trends
- Pre-K has seen an average of 8% growth each year, over the past 10 years and an average of 13% growth over the past 3 years
- On average, over the past 5 years, Pre-K has experienced a 14% increase in the number of students from the 1<sup>st</sup> day of school to the last day.
- Includes itinerant student population
- PowerSchool enrollment projections show K population peak in 2028 and then decline, we're showing PK balancing in 2028



Potential need for 12 -14 total Preschool classrooms

Enrollment as of 1/13/2025

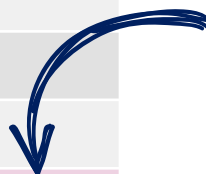
Please note this is not universal Preschool. Sylvania Schools is required by law to offer free Preschool to district children ages 3-5 who have been identified as a preschool child with disability, along with a corresponding number of tuition-based peer students.

Potential Preschool Enrollment

Potential Preschool Classroom Need (2028)

	Building	# of Classrooms 24/25	# of Sections	Class Size	2024 Capacity	Potential 2028 Enrollment	Potential 2028 Need	Delta
Preschool	Highland (Gen. Ed.)	1	2	16	32			
	Highland (IEP)	1	2	8	16			
	Maplewood (Gen. Ed)	3	6	16	96			
	Maplewood (IEP)	1	1	12	12			
	Northview	1	1	16	16*			
	Whiteford	2	4	16	64			
	Total	9	14		236	332 - 398	12-14	(5)

Potential need for 5 additional Preschool classrooms



Highland  
2 Classrooms



Maplewood  
4 Classrooms

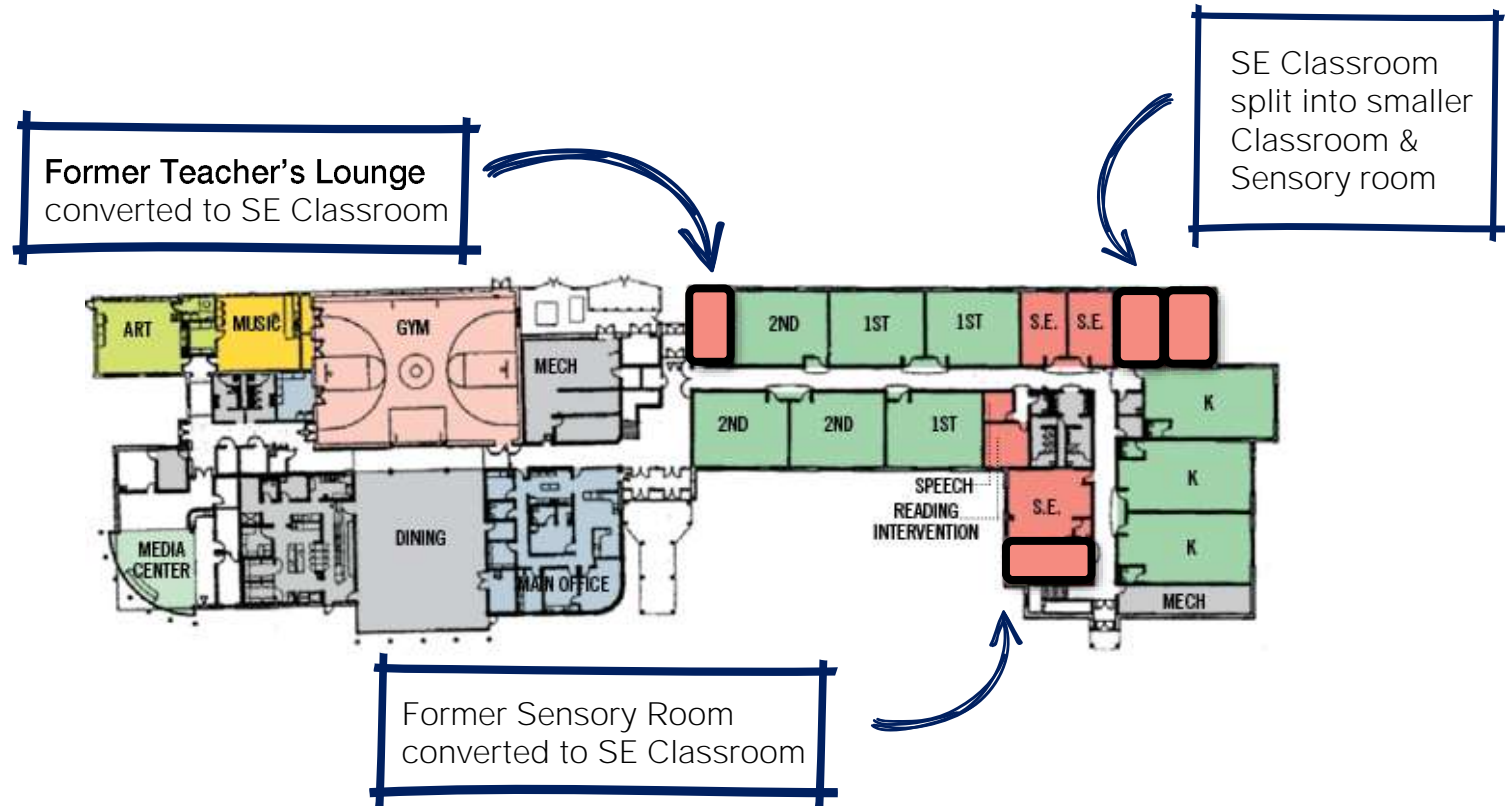


Whiteford  
2 Classrooms



Northview  
1 Classroom / Career Tech Lab

- Spaces across the district have been repurposed to accommodate growing Special Education (SE) classroom needs
- Converting spaces like libraries, teachers' lounges and conference rooms into less than ideal learning environments
- 7 additional spaces were converted this fall alone
- Whiteford, Maplewood, Hill View and others



Hill View Example



*...less than ideal learning environments*

Intervention Spaces



VS.



*The smaller the desired class size, the greater the number of classrooms needed...*

3 Strategies for Class Size

- Occupancy per Sylvania City School District Contract (Cont.)

---

- K -3 | 25 Students per Classroom  
4-12 | 29 Students per Classroom
- Occupancy per Committee Preference (Pref.)

---

- K | 20 Students per Classroom  
1<sup>st</sup> – 2<sup>nd</sup> | 22 Students per Classroom  
3<sup>rd</sup> – 5<sup>th</sup> | 24 Students per Classroom  
6<sup>th</sup> – 12<sup>th</sup> | 29 Students per Classroom
- Occupancy per Ohio Facilities Construction Commission (OFCC)

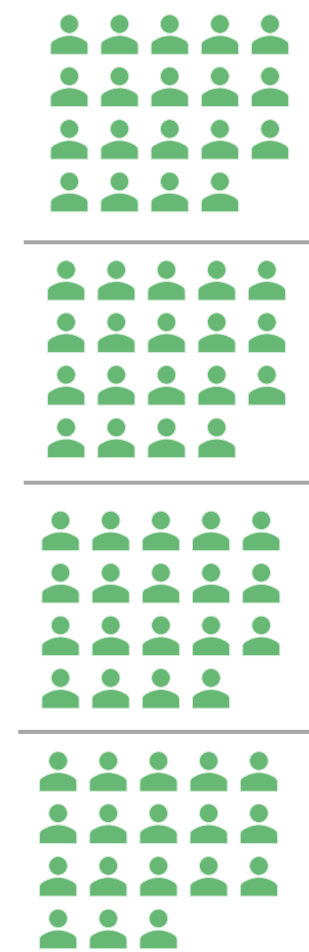
---

- K | 20 Students per Classroom  
1<sup>st</sup> -12<sup>th</sup> | 25 Students per Classroom

Total # Students per Grade by Building

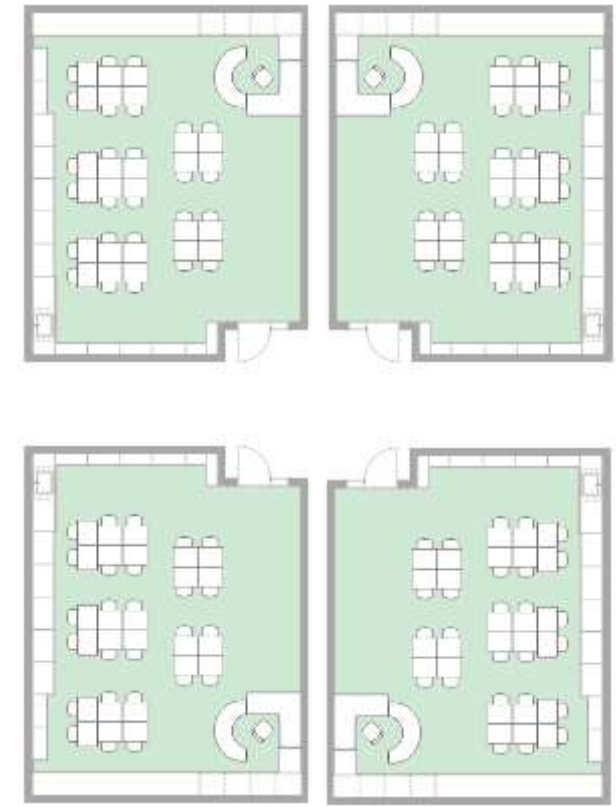


Desired Class Size  
20



÷ =

Number of Classrooms Needed  
4





*Using the agreed upon contract-based numbers, will allow for greater flexibility*

3 Strategies for Class Size

- Occupancy per Sylvania City School District Contract (Cont.)

---

- K -3 | 25 Students per Classroom
- 4-12 | 29 Students per Classroom
  
- Occupancy per Committee Preference (Pref.)

---

- K | 20 Students per Classroom
- 1<sup>st</sup> – 2<sup>nd</sup> | 22 Students per Classroom
- 3<sup>rd</sup> – 5<sup>th</sup> | 24 Students per Classroom
- 6<sup>th</sup> – 12<sup>th</sup> | 29 Students per Classroom
  
- Occupancy per Ohio Facilities Construction Commission (OFCC)

---

- K | 20 Students per Classroom
- 1<sup>st</sup> -12<sup>th</sup> | 25 Students per Classroom

Total # Students per Grade by Building



Desired Class Size  
25

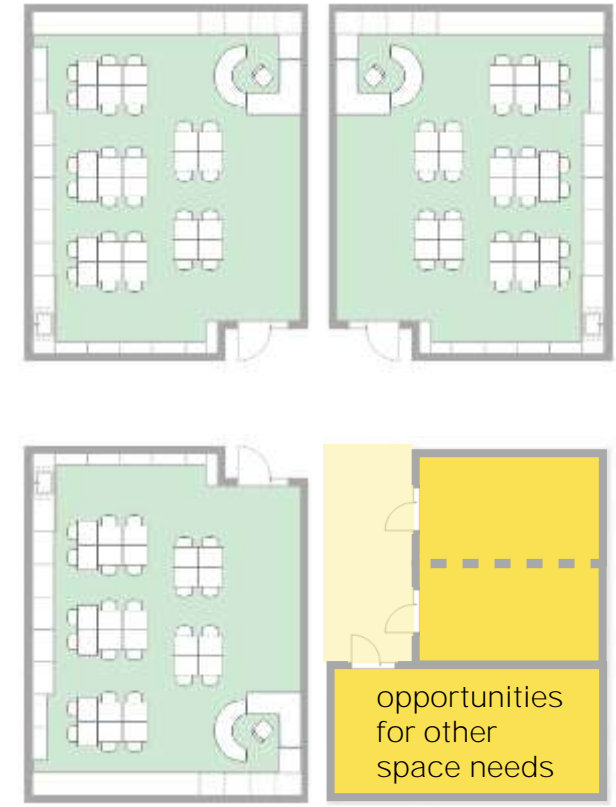


÷

=

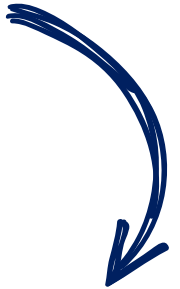
Number of Classrooms Needed

3



Potential Overall Needs by Grade Band  
at Peak Enrollment

A large percentage of demand is growing need for special education classrooms and preschool



Overall District Peak	Available	Potential Peak Classroom Demand (# of classrooms)			Potential Delta ( # of classrooms needed)		
		Occupancy per Contract	Occupancy per OFCC Standards	Occupancy per Committee Preference	Occupancy per Contract	Occupancy per OFCC Standards	Occupancy per Committee Preference
Elementary (PreK-5) 2027	212	196	206	213			
District Remain the Same					-4	-9	-14
Redistricting					11	1	-6
Junior High (6-8) 2028	111	101	108	101			
District Remain the Same					-	-5	-
Redistricting					10	3	10
High School (9-12) 2031	158	132	146	132			
District Remain the Same					-	-	-
Redistricting					26	12	26

±8 Additional SE & ±5 Preschool Classrooms Needed

±7 Additional SE Classrooms Needed

±10 Additional SE Classrooms Needed

Based on Analysis of Enrollment Projections (Moderate) Fall 2025 by PowerSchool (Nov 2024)  
Classroom Counts from Spring 2024

Occupancy by Contract allows for the greatest amount of flexibility in making typical classrooms available for special education space needs and collaboration space desires

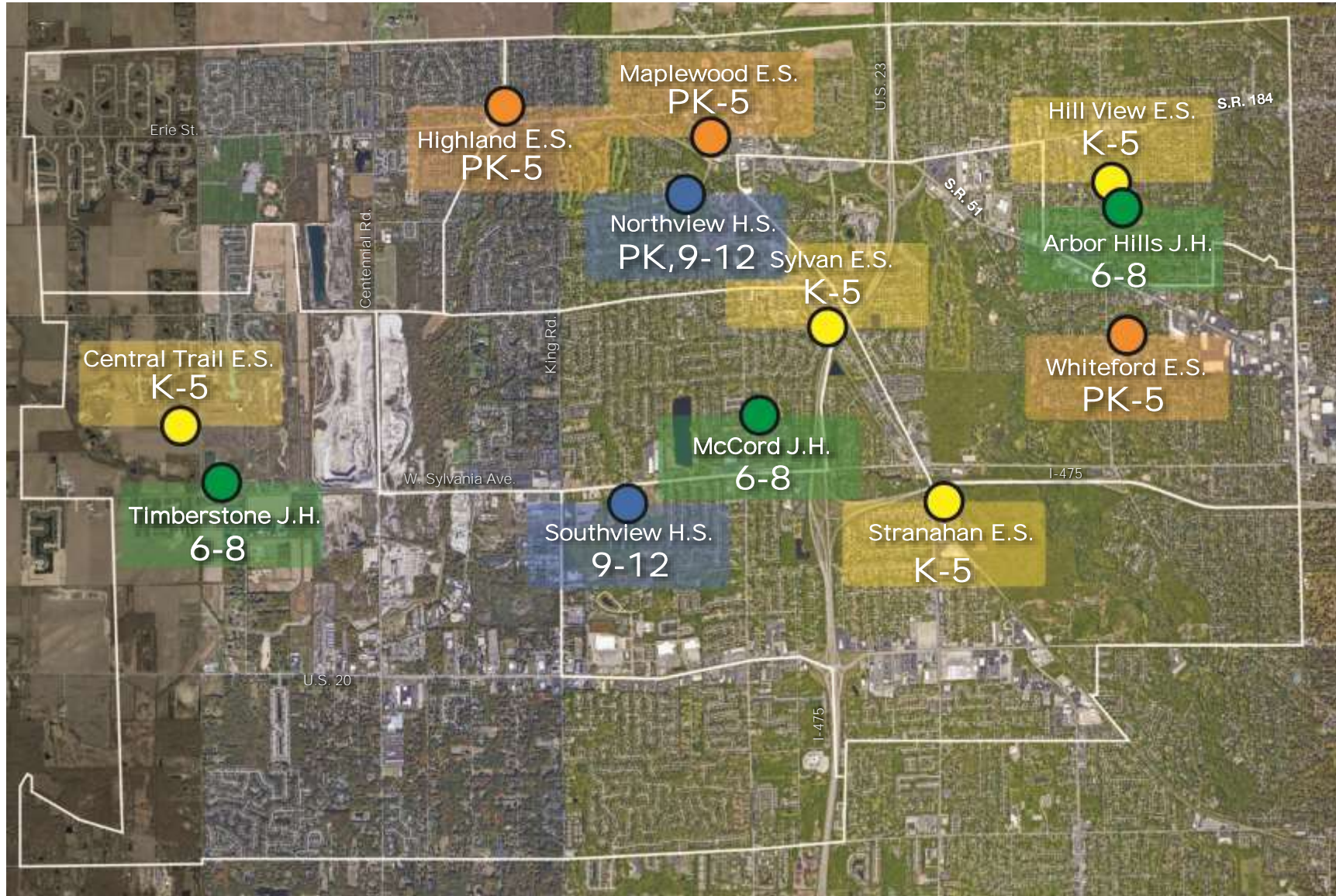
Potential Overall Needs by Grade Band at Peak Enrollment

Overall District Peak	Available	Potential Peak Classroom Demand (# of classrooms)			Potential Delta ( # of classrooms needed)		
		Occupancy per Contract	Occupancy per OFCC Standards	Occupancy per Committee Preference	Occupancy per Contract	Occupancy per OFCC Standards	Occupancy per Committee Preference
Elementary (PreK-5) 2027	212	196	206	213			
District Remain the Same					-4	-9	-14
Redistricting					11	1	-6
Junior High (6-8) 2028	111	101	108	101			
District Remain the Same					-	-5	-
Redistricting					10	3	10
High School (9-12) 2031	158	132	146	132			
District Remain the Same					-	-	-
Redistricting					26	12	26

Based on Analysis of Enrollment Projections (Moderate) Fall 2025 by PowerSchool (Nov 2024)  
Classroom Counts from Spring 2024



Existing District Configuration



Existing District Configuration

- 9<sup>th</sup>-12<sup>th</sup> Grade
- 6<sup>th</sup>-8<sup>th</sup> Grade
- K-5<sup>th</sup> Grade
- PK-5<sup>th</sup> Grade



Projected District Need / Surplus at Peak  
Occupancy per School District Contract



*...but not all spaces are ideal*

Projected District Classroom Need/Surplus at Peak

- Projected Over Capacity
  - Sylvan Elementary
  
- Projected At or Just Under Capacity
  - Central Trail Elementary
  - Arbor Hills Junior High
  - Maplewood Elementary
  - Timberstone Junior High
  - Whiteford Elementary
  
- Projected Under Capacity
  - Highland Elementary
  - Hill View Elementary
  - Stranahan Elementary
  - McCord Junior High
  - Northview High School
  - Southview High School

*Based on Analysis of Enrollment Projections (Moderate) Fall 2025 by PowerSchool (Nov 2024), Classroom Counts from Spring 2024  
Need based on Occupancy per Sylvania School District Contract- K-3 | 25 Students per Classroom, 4-12 | 29 Students per Classroom*

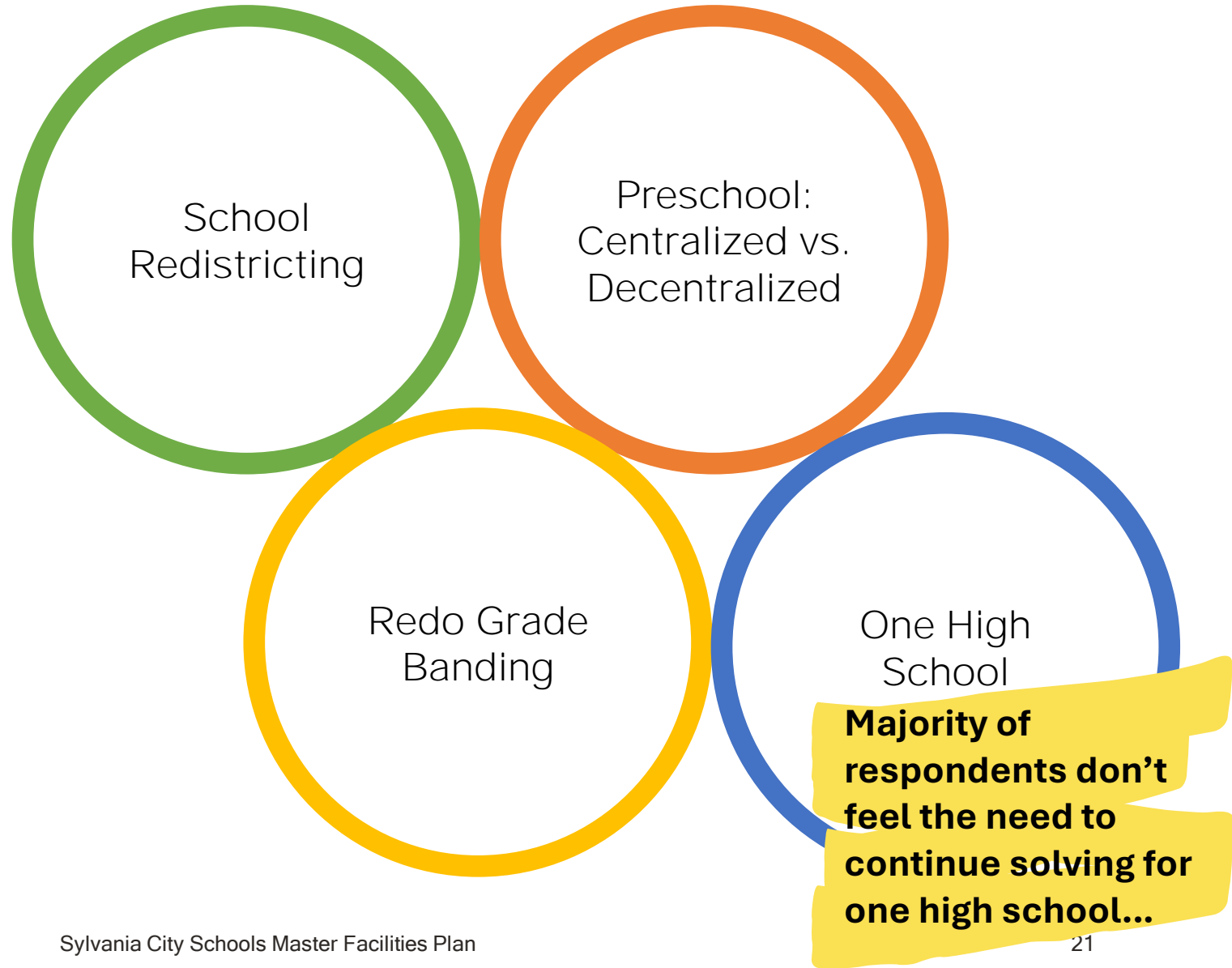
## Agenda

- 1 Process Overview
- 2 Enrollment Trends & District Capacity
- 3 A Flexible Framework for Accommodating Growth**
- 4 Infrastructure & Learning Environments
- 5 Next Steps



Scenarios examined the potential impacts of the following strategies:

A Flexible Framework for Accommodating Growth



*Options do not address potential PK-5<sup>th</sup> space needs...*

Exploring One High School

	Option	Details
A	Renovate / Addition to Existing Facility	<ul style="list-style-type: none"> <li>- Significant addition needed for 2,700 students, only feasible at Southview Would displace athletics/band practice fields</li> <li>- Northview has significant investments in athletics and Career Tech; could be repurposed as a junior high, but would also require addition / renovation</li> </ul>
B	New Construction	<ul style="list-style-type: none"> <li>- Requires a 38-acre site within the district</li> <li>- Southview lacks space for new build without major disruptions and loss of athletics fields / band practice fields</li> <li>- High cost, with potential to leave two facilities vacant</li> </ul>
C	Divide High Schools by Grade Bands	<ul style="list-style-type: none"> <li>- Separate 9<sup>th</sup>-10<sup>th</sup> and 11<sup>th</sup>-12<sup>th</sup> into two facilities</li> <li>- Limits student educational opportunities</li> <li>- Increases transportation needs and costs for shared resources/programs</li> </ul>

*Updated to reflect 2025 PowerSchool Enrollment Projections*

*How much could a new high school potentially cost?...*

Building Construction (OFCC Standards):

- 2,700 Total Potential Enrolled High School Students (9-12)
- 421,200sf @ 156 sf / student per Ohio Facilities Construction Commission (OFCC) standards
- \$390\* / sf includes Career Tech Space

Acquire Property:

- 38 Acres \* (\$50,000/acre)

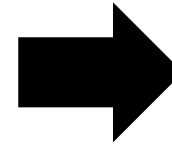
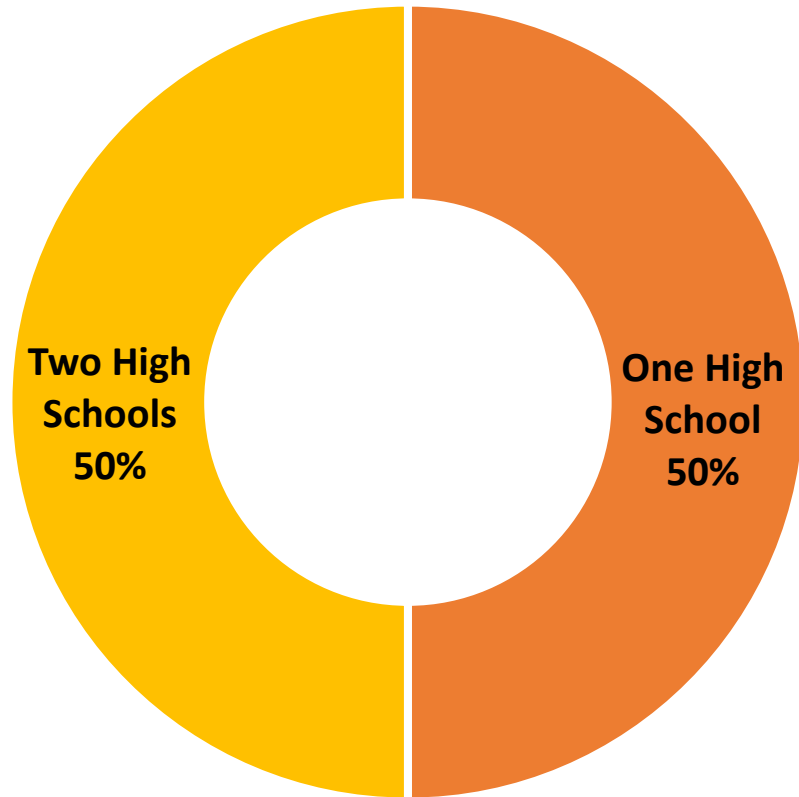
***Total Potential Project Cost: \$166,168,000\****

*\*Cost estimates are represented in 2024 dollars based on Ohio Facilities Construction Commission (OFCC) New Construction Opinion of Probable Costs*

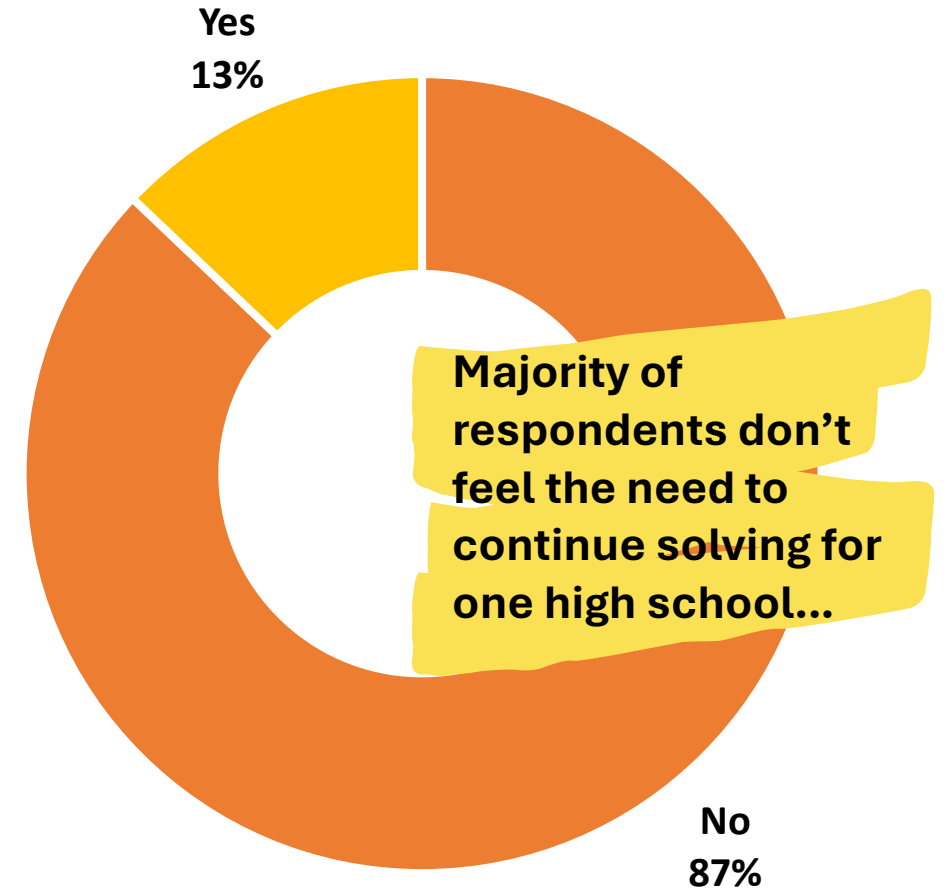
*Updated to reflect 2025 PowerSchool Enrollment Projections*

What we heard - One High School

Input from Master Facilities Plan Committee 02/20/2024  
Should there be one or two high schools?



Input from Master Facilities Plan Committee 11/4/2024  
Based on the information provided, should the Committee continue to explore the concept of one high school?



Exploring Preschool Options

Scenarios	Pros	Cons	Capital Cost
Decentralized Add Preschool to Existing Elementary Schools	<ul style="list-style-type: none"> <li>No new construction required</li> <li>Allows for some amount of flexibility</li> <li>1-2 classrooms per building available to become collaboration space or other need</li> </ul>	<ul style="list-style-type: none"> <li>Decentralized – located in multiple facilities across the district</li> <li>Number of facilities with preschool would continue to increase</li> <li>Operationally inefficient</li> </ul>	\$
Centralized Convert Existing Sylvania Facility to Early Learning Center	<ul style="list-style-type: none"> <li>Centralized</li> <li>Uses existing district-owned building</li> <li>Potential operational savings</li> <li>Potential to relocate Administration function to surplus building space, allowing for sale of the Rieger Administration building</li> </ul>	<ul style="list-style-type: none"> <li>Requires redistricting</li> <li>Classroom additions or modulars may be needed</li> <li>Potentially restricts district K-5 flexibility by taking surplus classrooms offline</li> </ul>	\$\$-\$\$\$
Centralized Buy / Lease an Existing Facility	<ul style="list-style-type: none"> <li>Centralized</li> <li>Potential operational savings</li> <li>Creates districtwide surplus space in K-5 facilities for collaboration space etc. (3-4 classrooms per building)</li> </ul>	<ul style="list-style-type: none"> <li>Requires specific criteria needs for facility within the district – lower probability of availability</li> <li>Potentially cost prohibitive depending on level of renovation</li> </ul>	\$\$\$
Centralized Construct a New Facility	<ul style="list-style-type: none"> <li>Centralized</li> <li>Purpose-built facility</li> <li>Potential operational savings</li> <li>Creates districtwide surplus space in K-5 facilities for collaboration space etc. (3-4 classrooms per building)</li> </ul>	<ul style="list-style-type: none"> <li>Requires available land</li> <li>High cost</li> </ul>	\$\$\$\$



**MFP Committee's Preferred Strategy**

Input from Master Facilities Plan Committee 11/4/2024

What we heard - Accommodating Growth

- Additional Space Needs (2-3)
- 9th-12th Grade
- 6th-8th Grade
- K-5th Grade
- Early Learning Center



Scenario | One Early Learning Center & School Redistricting

#1

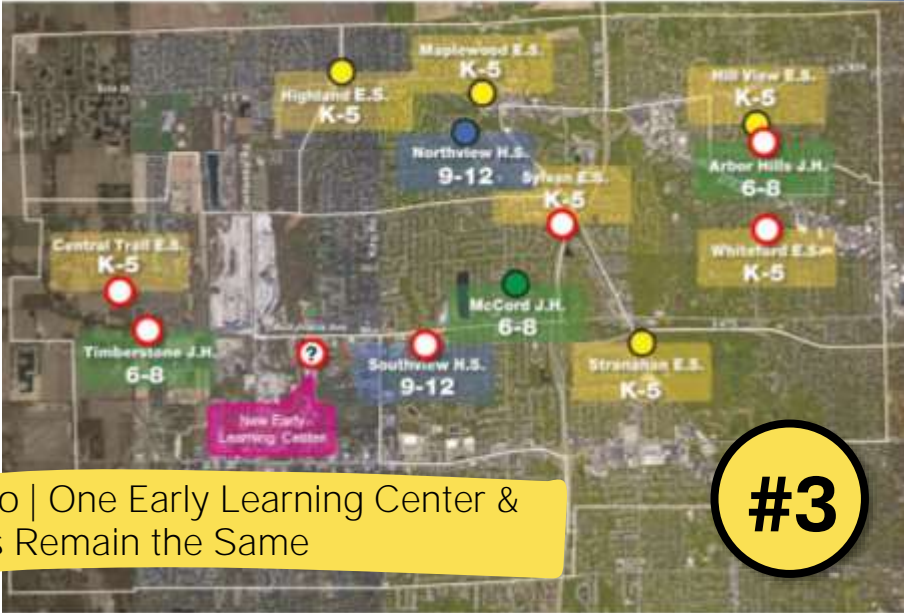
- Additional Space Needs (3)
- 9th-12th Grade
- 7th-8th Grade
- 5th-6th Grade
- K-4th Grade
- PK-4th Grade



Scenario | Redo Grade Banding

#2

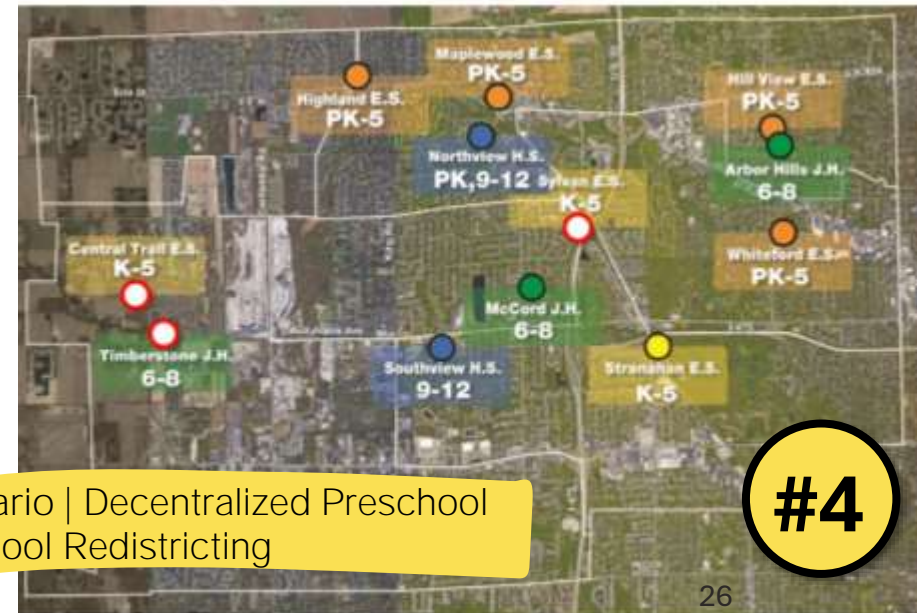
- Additional Space Needs (5-6)
- 9th-12th Grade
- 6th-8th Grade
- K-5th Grade
- Early Learning Center



Scenario | One Early Learning Center & Districts Remain the Same

#3

- Additional Space Needs (3)
- 9th-12th Grade
- 6th-8th Grade
- K-5th Grade
- PK-5th Grade



Scenario | Decentralized Preschool & School Redistricting

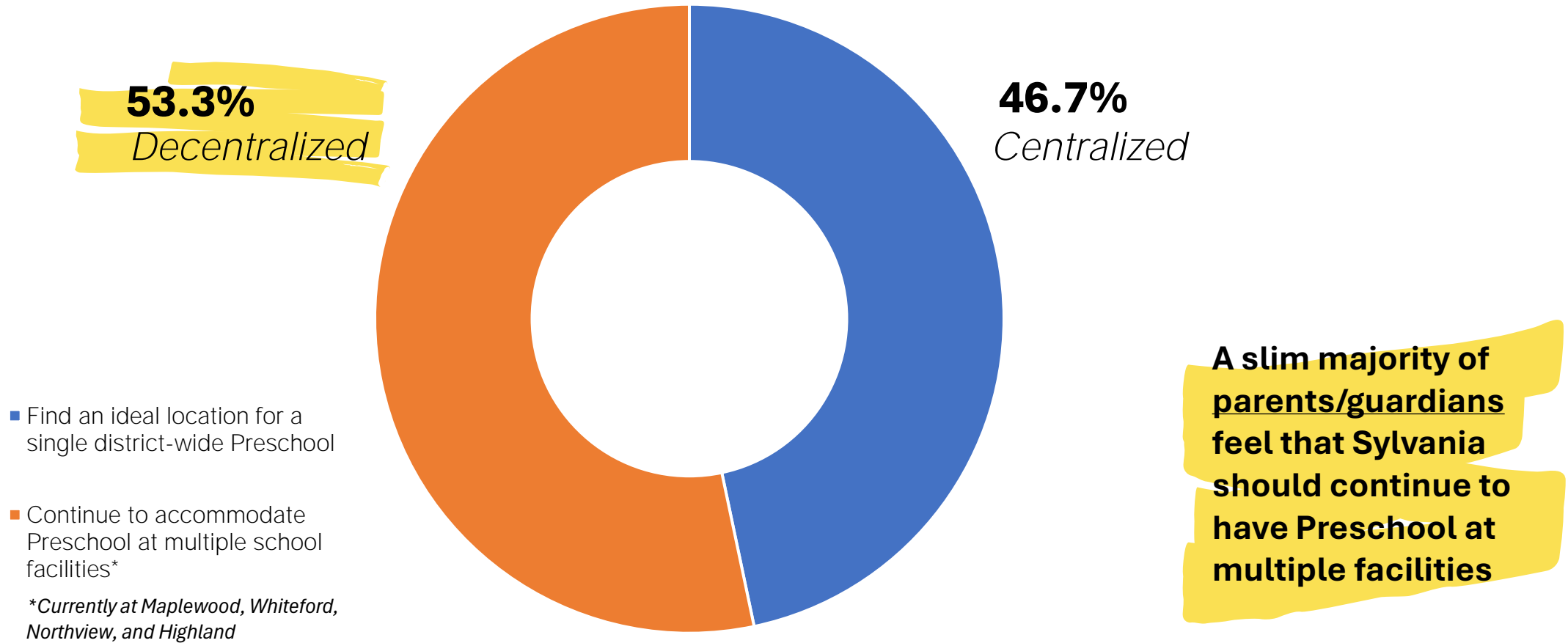
#4



Sylvania Schools is required by law to offer free Preschool to district children ages 3-5 who have been identified as a preschool child with disability, along with a corresponding number of tuition-based peer students.

Which Preschool offerings should be considered?

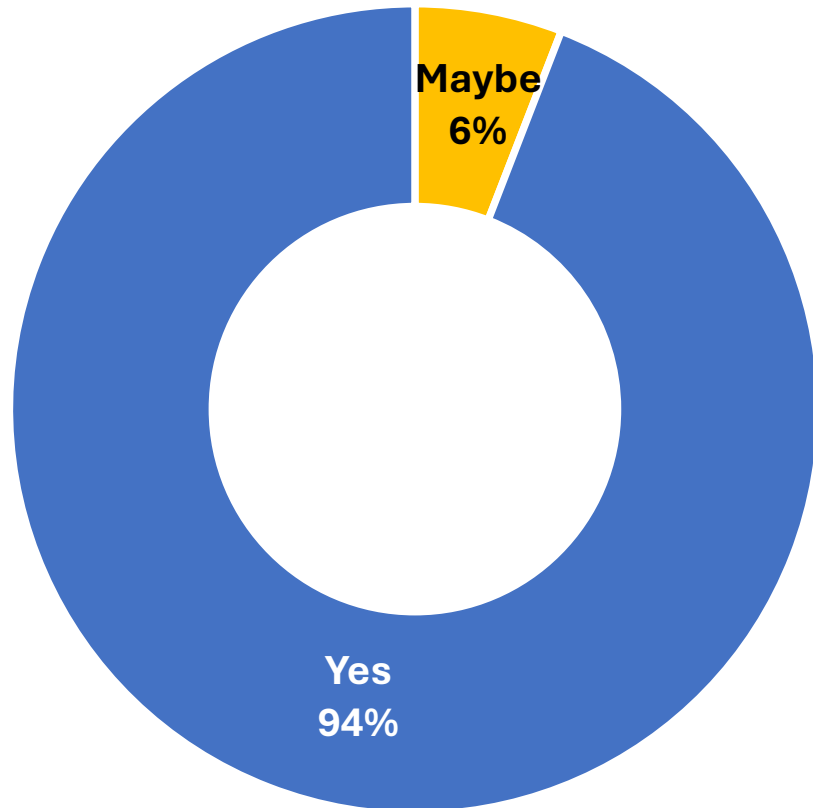
What we heard - Preschool



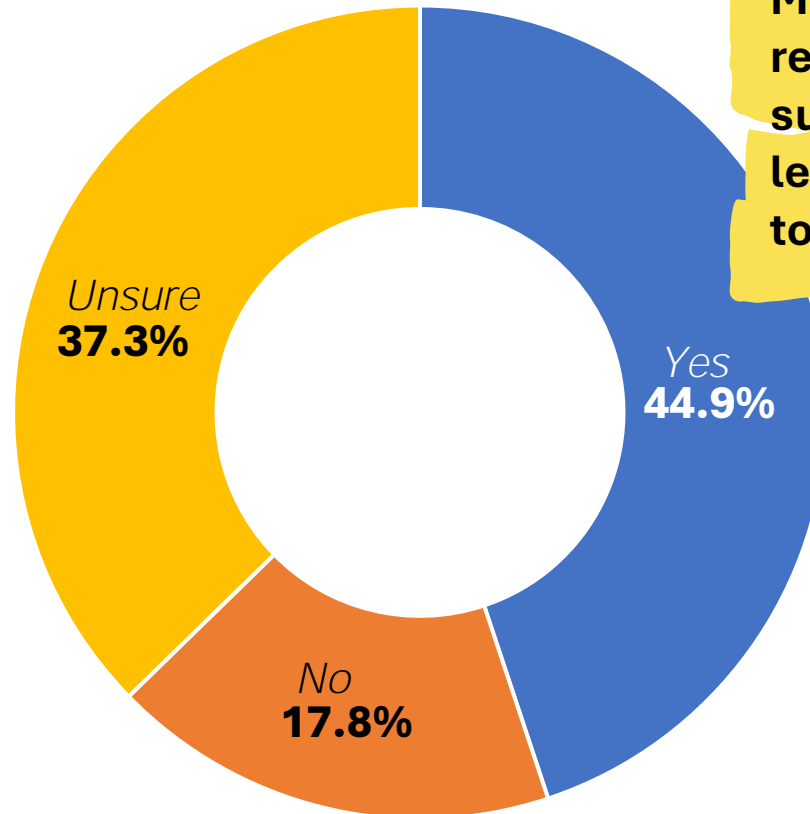
What we heard - Redistricting

Would you support some level of district reorganization if it meant less new construction (potential cost savings) across the district?

Input from Master Facilities Plan Committee 11/4/2024



Input from Parents / Guardians 12/2024



Majority of respondents are in support of some level of redistricting to save costs

These scenarios are all options for planning, not a determined direction...

A Flexible Framework...

Scenario	Objective
1	Decentralized Preschool
2	Centralized Preschool - Convert Existing Facility (A or B) to Early Learning Center
3	Centralized Preschool – New Early Learning Center
4	Redo Grade Banding

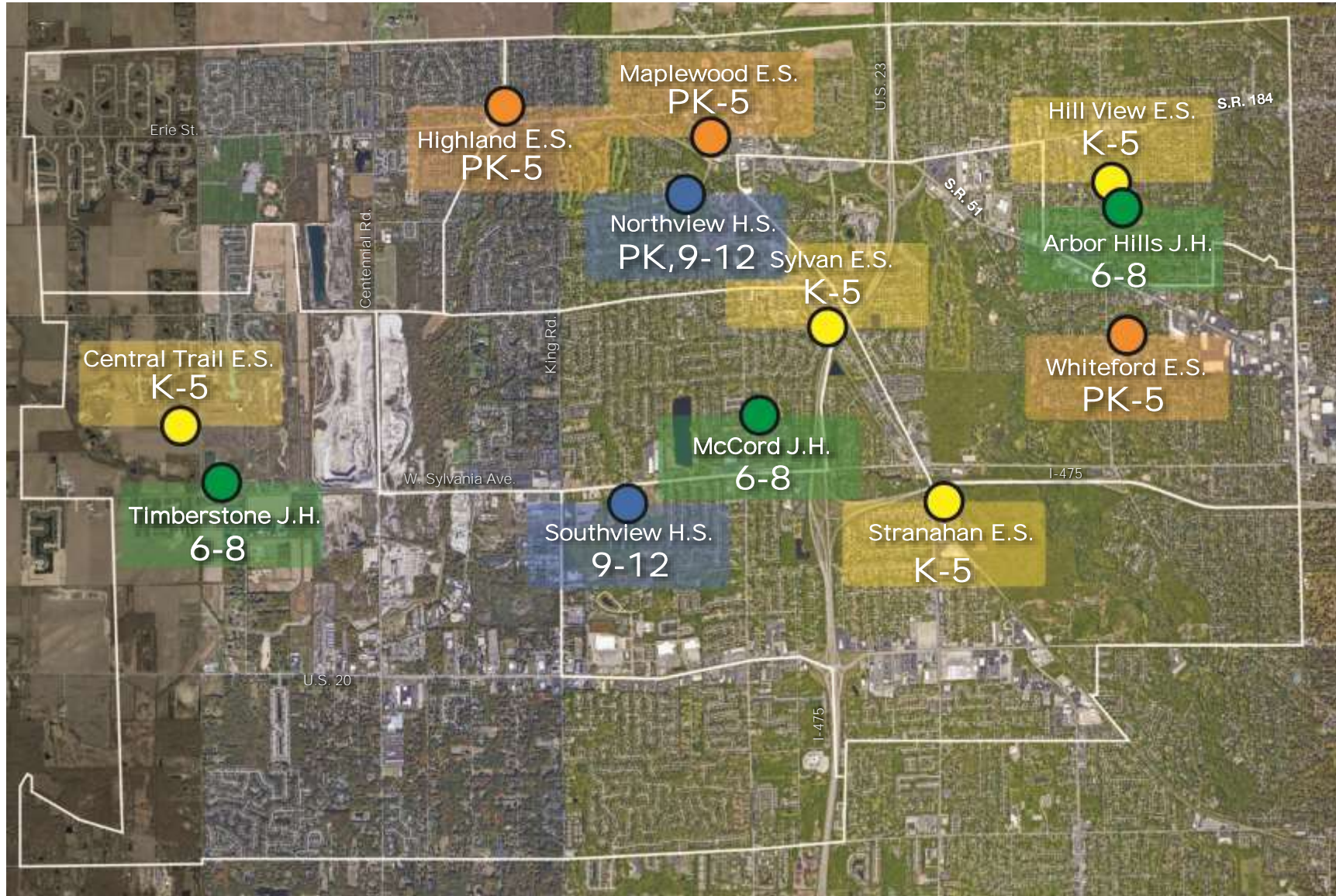
*Scenario 5 - Exploring One High School is not included, due MFP Committee consensus that it should no longer be explored*

*Based on Analysis of Enrollment Projections (Moderate) Fall 2025 by PowerSchool (Nov 2024)  
Need based on Occupancy per Sylvania School District Contract- K-3 | 25 Students per Classroom, 4-12 | 29 Students per Classroom*

## Scenario 1 | Decentralized Preschool



Scenario 1 | De-centralized Preschool

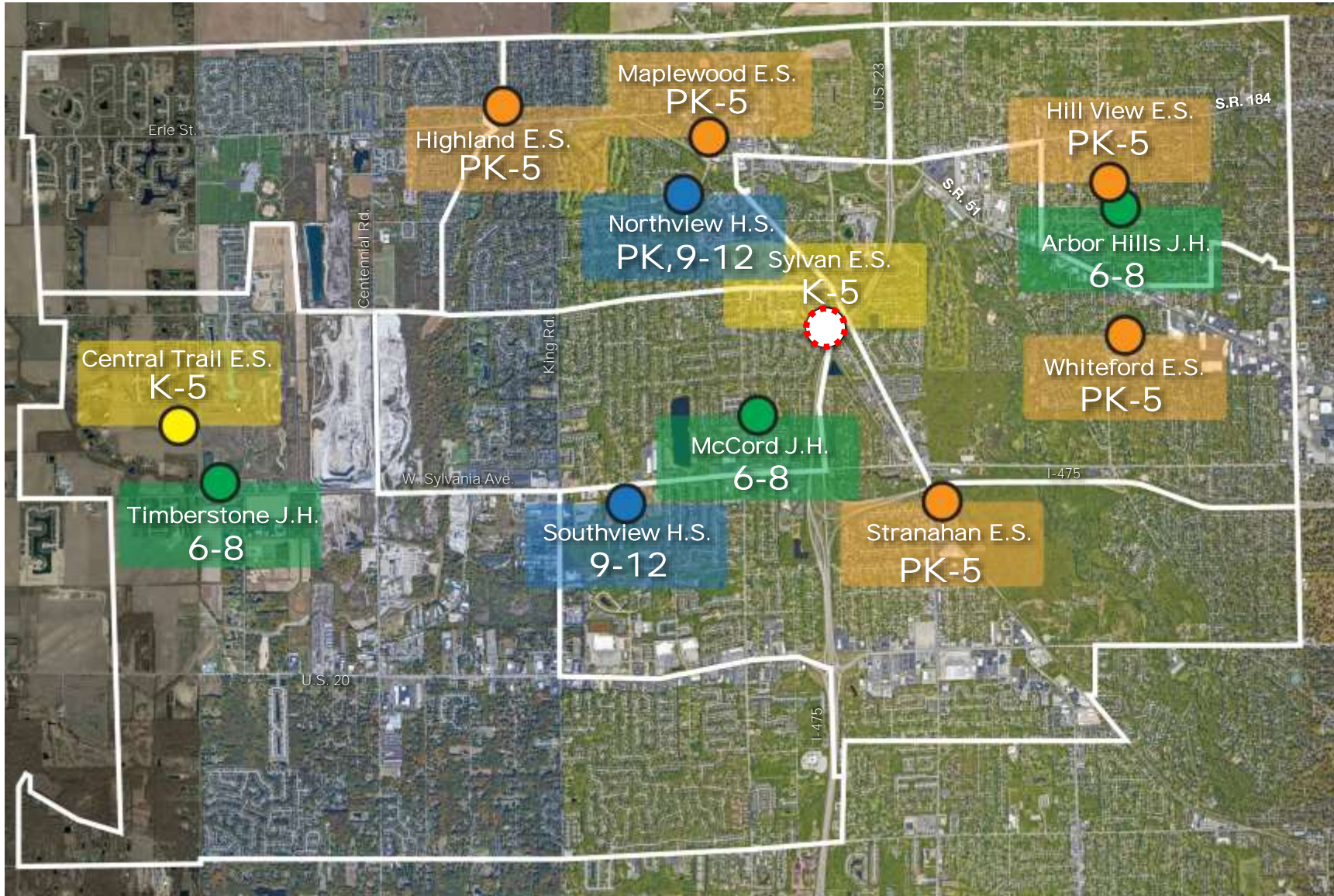


Existing District Configuration

- 9<sup>th</sup>-12<sup>th</sup> Grade
- 6<sup>th</sup>-8<sup>th</sup> Grade
- K-5<sup>th</sup> Grade
- PK-5<sup>th</sup> Grade



Scenario 1 | De-centralized Preschool



Elementary (PK-5)

- Preschool needs distributed across district
- Preschool potentially added to Highland, Hill View and/or Stranahan to all become a PK-5 facilities
- If redistricting occurs, surplus classrooms across district for Sylvan space needs to be met, otherwise Sylvan will require an addition

Junior High (6-8)

- Surplus classrooms available for other space desires (e.g. collaboration space)

High School (9-12)

- Surplus classrooms available for other space desires (e.g. collaboration space)

- Add. Space Needs w/o School Redistricting (1+)
- 9<sup>th</sup>-12<sup>th</sup> Grade
- 6<sup>th</sup>-8<sup>th</sup> Grade
- K-5<sup>th</sup> Grade
- PK-5<sup>th</sup> Grade



# THE COLLABORATIVE

Considerations if redistricting does not **occur...**

Sylvan would require an additional classroom

Projected Over Capacity  
– Sylvan Elementary

Other buildings that are projected to be at or just under capacity may want additional space for flexibility

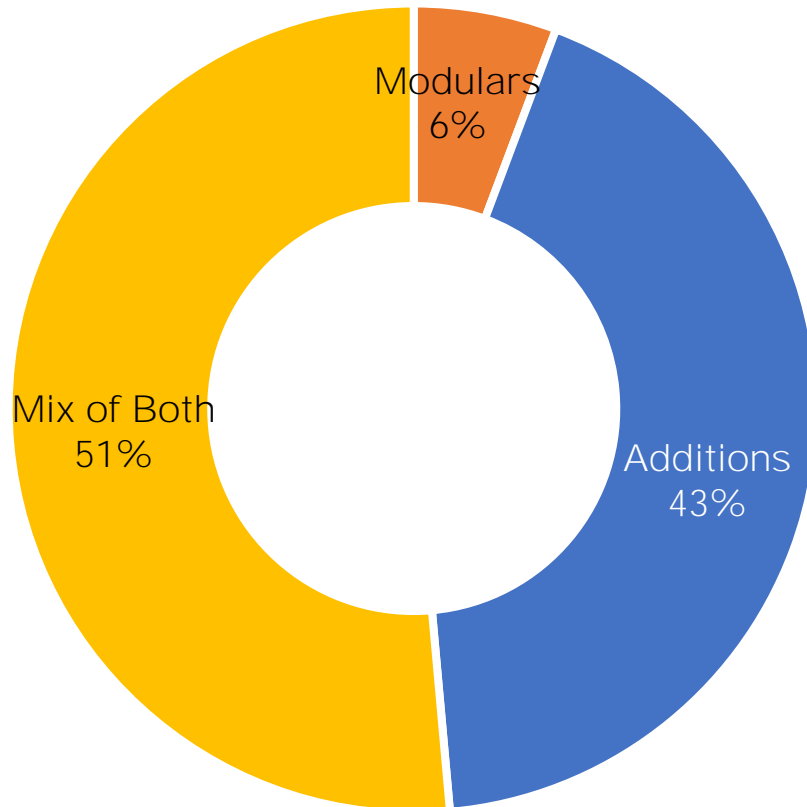
Projected At or Just Under Capacity  
– Central Trail Elementary  
– Arbor Hills Junior High  
– Maplewood Elementary  
– Timberstone Junior High  
– Whiteford Elementary



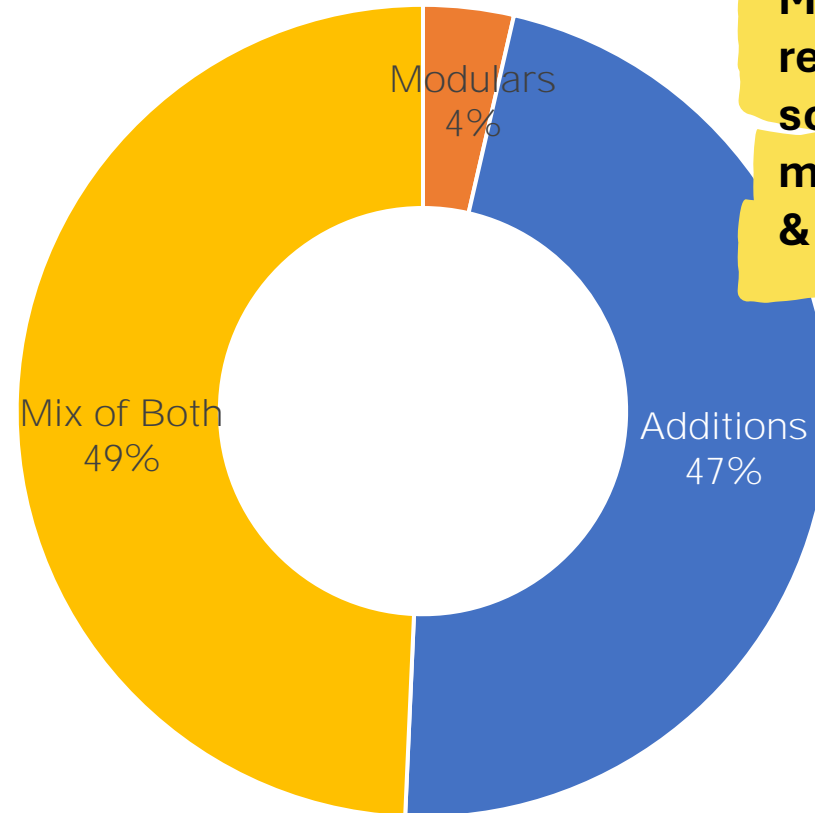
What we heard - New Space

Should the district prioritize modular units, building additions, or a mix of both, based on the timing and location of peak enrollment needs?

Input from Master Facilities Plan Committee 11/4/2024



Input from Parents / Guardians 12/2024



**Majority of respondents think the solution should be a mix of both modularity & additions**



# THE COLLABORATIVE

*For Scenario Planning Only*

## Classroom Addition (6 classrooms)

- 6 Classrooms – ±900 sf each
- Collaboration Space
- Restrooms
- Faculty Restroom
- IT / Elec, Janitor Closet

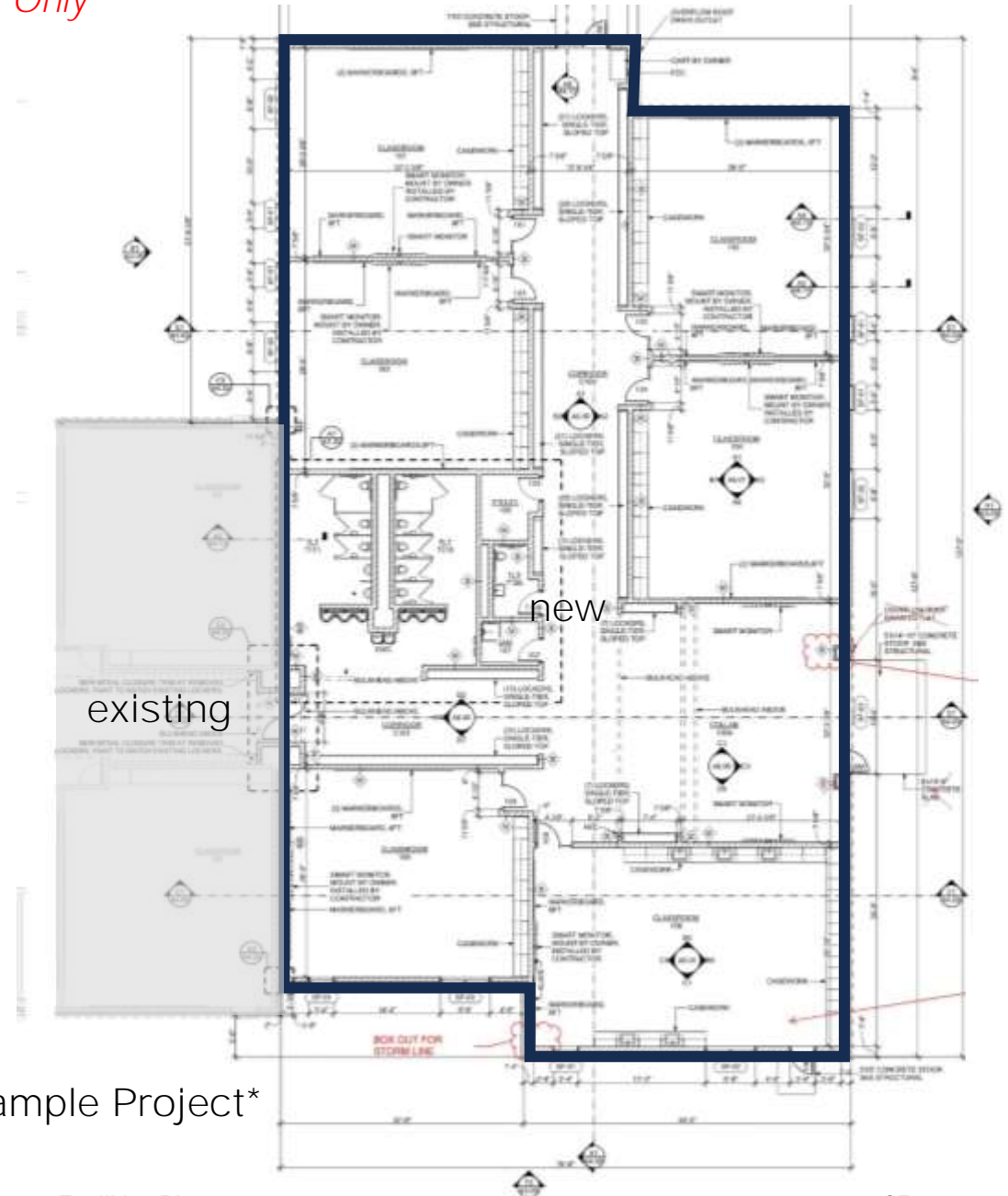
±\$3.6 Million\* Total Project Cost

## 3 Modulares (6 classrooms)

- 6 Classrooms - \$200,000 per 2
- Portable Toilet Room - \$400,000
- Includes utilities

±\$1 Million Total Project Cost

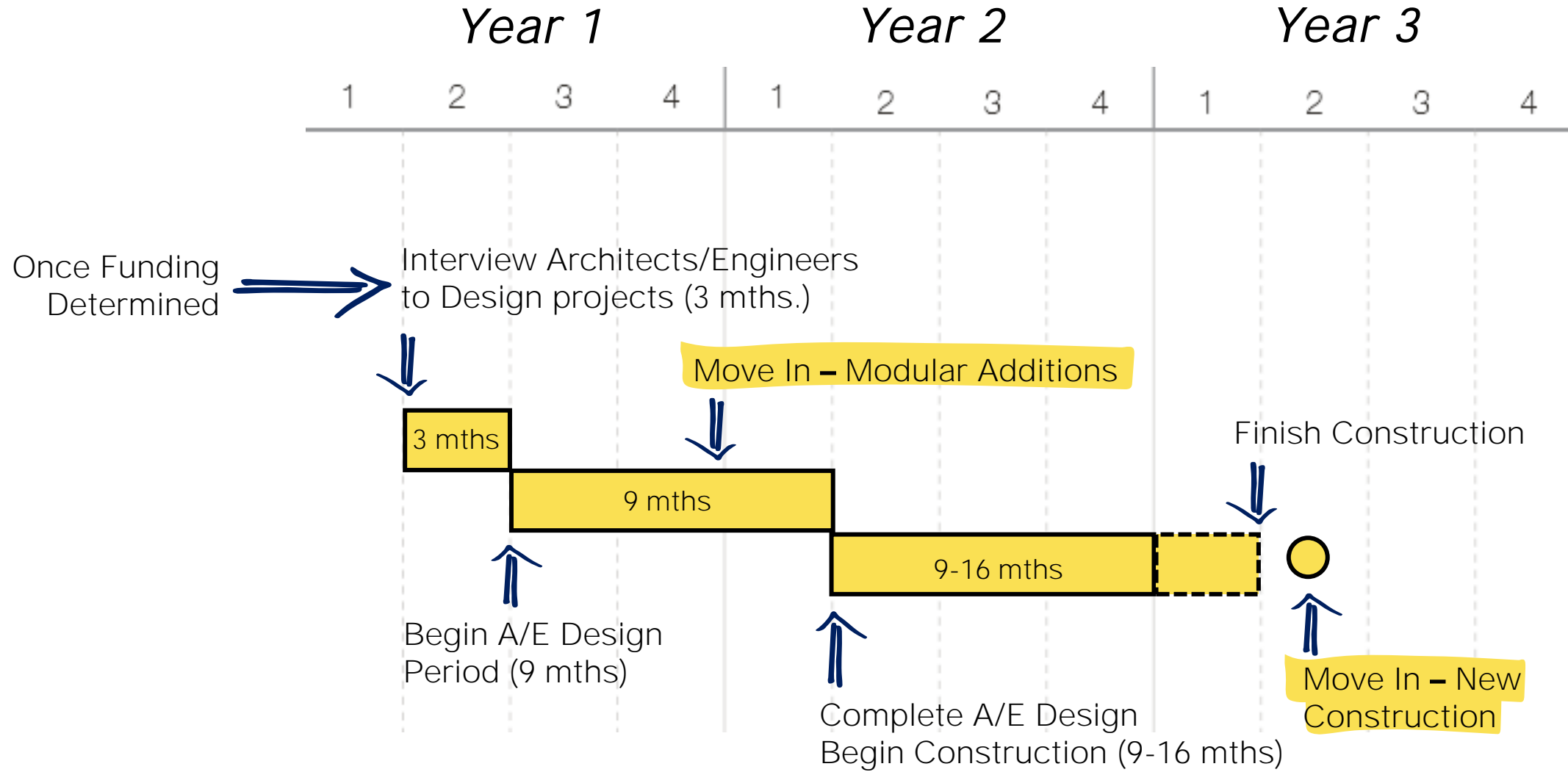
\*Based on a current project for another school district  
All costs are in 2024 dollars



Example Project\*



Example of Construction Timeline



## Scenario 2a/2b | Centralized Preschool - Reuse Existing Facility

Sylvania School District owns and operates 14 facilities across the district; to be considered as a **candidate for repurposing as an Early Learning Center** it should meet the following criteria:

1. Be an Existing Elementary School
  - Best suited for minimal renovation needs
  
2. Have Fewer than 30 Total Classrooms
  - Minimizes the numbers of classrooms (typical and SE) taken offline for K-5 use
  - Reduces the need for additional classrooms at peak enrollment
  
3. Be Built Before 2000
  - Preserves newer elementary facilities for general K-5 use

THE COLLABORATIVE

\* Includes Existing Typical, Special Education and Preschool Classrooms

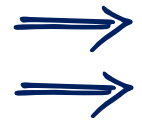


District Facility	Total Number of Classrooms*	Date Constructed
Administration Building	0	1933
Arbor Hills Jr High	35	1970
Central Trail Elementary	39	2012
Highland Elementary	37	1965
Hill View Elementary	26	2010
Maplewood Elementary	29	2011
McCord Jr High	39	1963
Northview High School	84	1975
Southview High School	74	1976
Stranahan Elementary	33	1955
Sylvan Elementary	23	1963
Timberstone Jr. High	37	1997
Transportation Building	0	XXXX
Whiteford Elementary	25	1967 / 1992 / 1993

7  
Elementary  
Schools

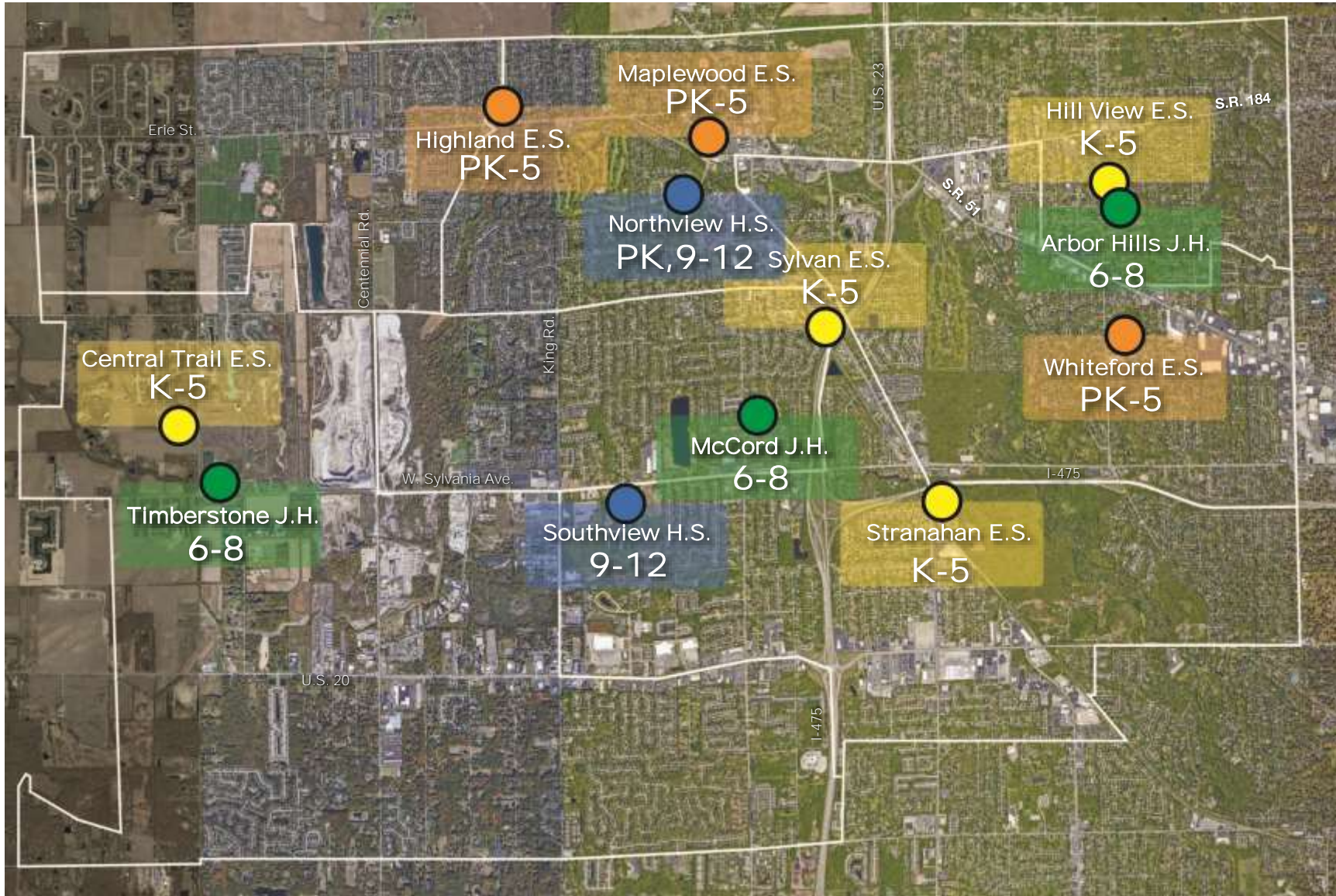
4  
< 30 Total  
Classrooms

2  
Built before 2000



Sylvan &  
Whiteford  
Meet criteria to be  
repurposed for Early  
Learning Center

Existing District Configuration

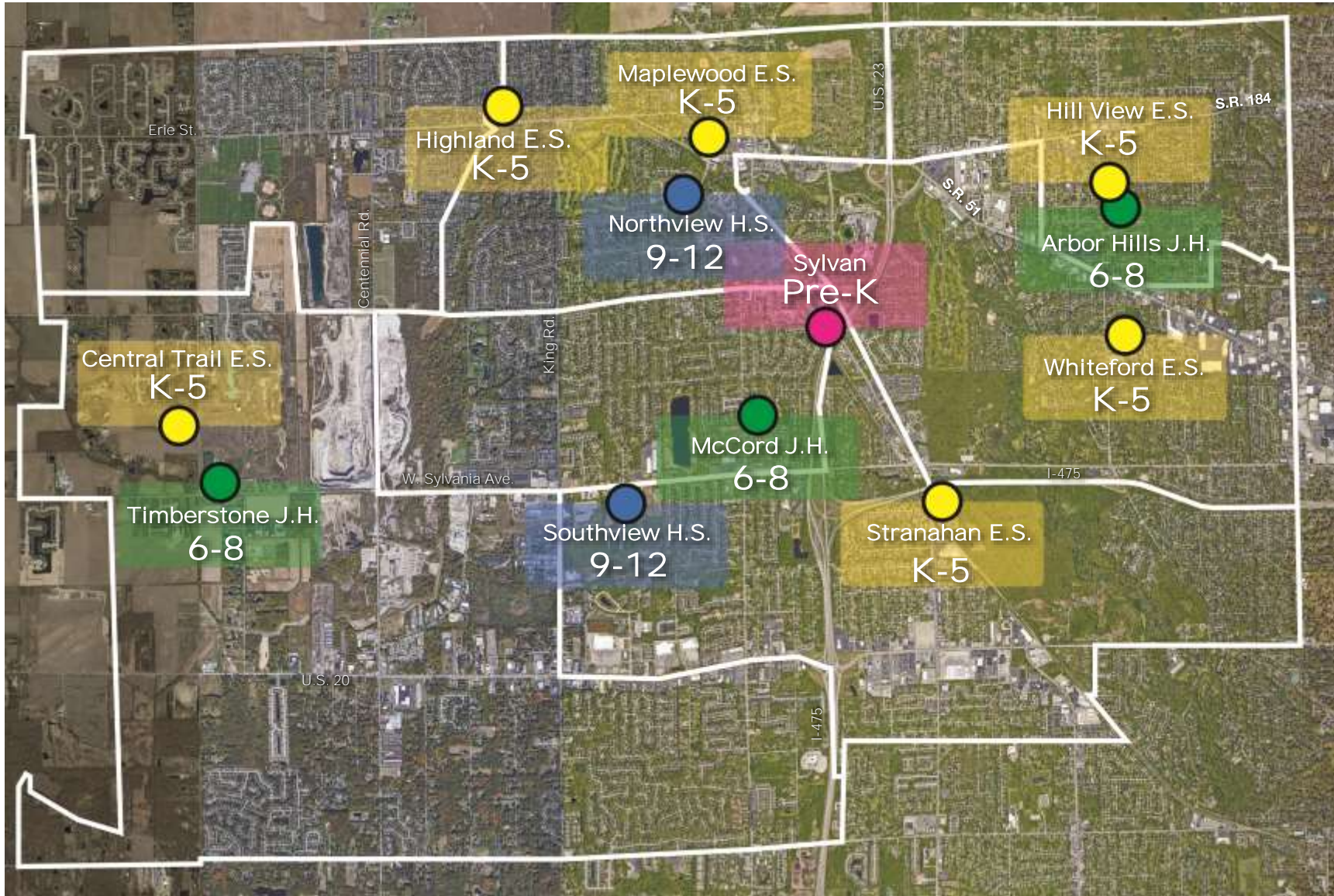


- 9<sup>th</sup>-12<sup>th</sup> Grade
- 6<sup>th</sup>-8<sup>th</sup> Grade
- K-5<sup>th</sup> Grade
- PK-5<sup>th</sup> Grade

Scenario 2a/2b | Centralized Preschool  
Reuse Existing Facility



Scenario 2a| Centralized Preschool  
Reuse Existing Facility - Sylvania



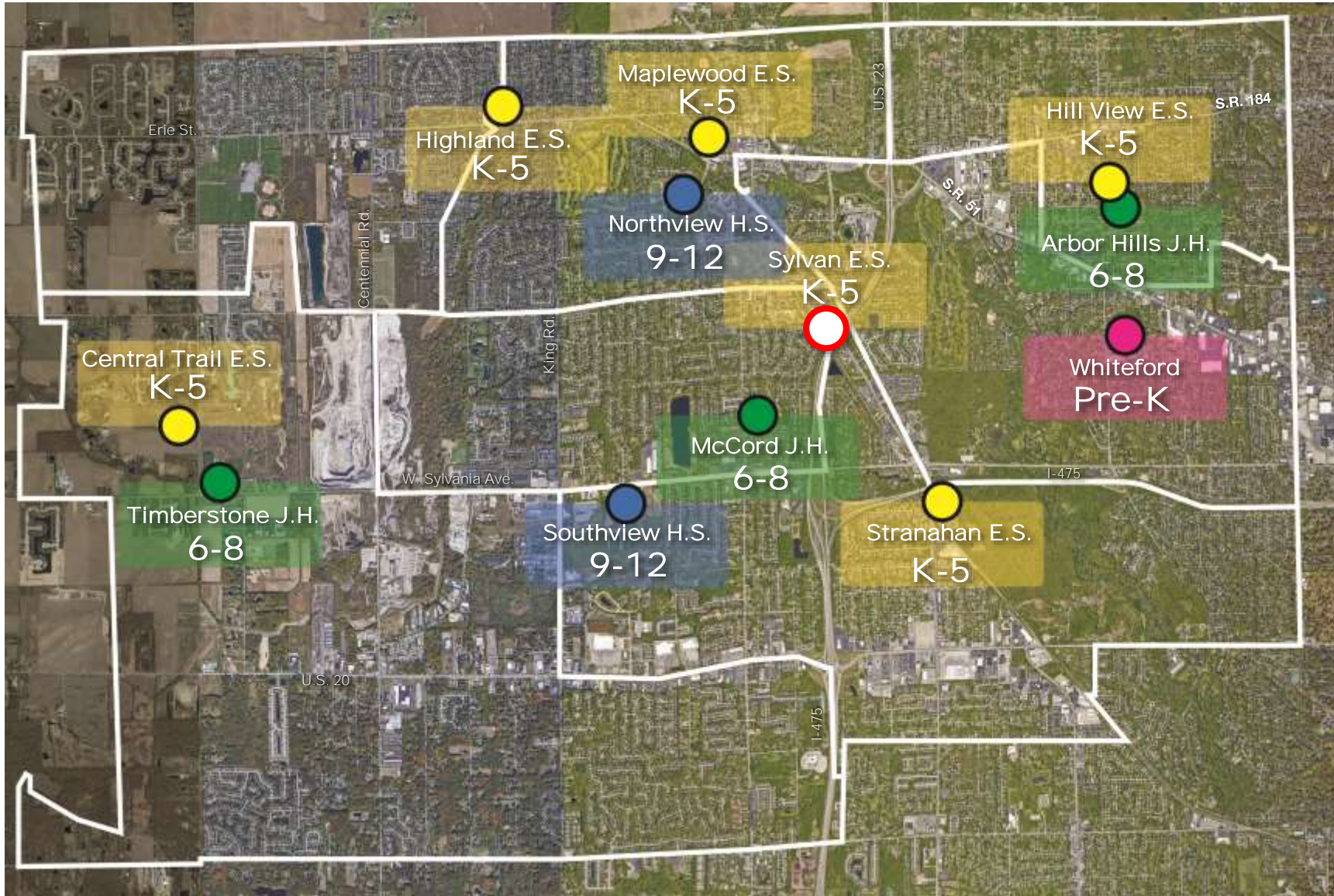
- Preschool (PK)
  - Convert Sylvan into a Preschool Facility
- Elementary (K-5)
  - Relocate all Preschool classes to Sylvan, 8 classrooms become available for other space needs
  - Requires K-5 redistricting
  - Surplus classrooms across the district will make it possible to redistribute Sylvan students without any additions
- Junior High (6-8)
  - Surplus classrooms available for other space desires (e.g. collaboration space)
- High School (9-12)
  - Surplus classrooms available for other space desires (e.g. collaboration space)

- Additional Space Needs
- 9<sup>th</sup>-12<sup>th</sup> Grade
- 6<sup>th</sup>-8<sup>th</sup> Grade
- K-5<sup>th</sup> Grade
- Early Learning Center

*Based on Analysis of Enrollment Projections (Moderate) Fall 2025 by PowerSchool (Nov 2024)  
Need based on Occupancy per Sylvania School District Contract- K-3 | 25 Students per Classroom, 4-12 | 29 Students per Classroom*



Scenario 2b| Centralized Preschool  
Reuse Existing Facility - Whiteford

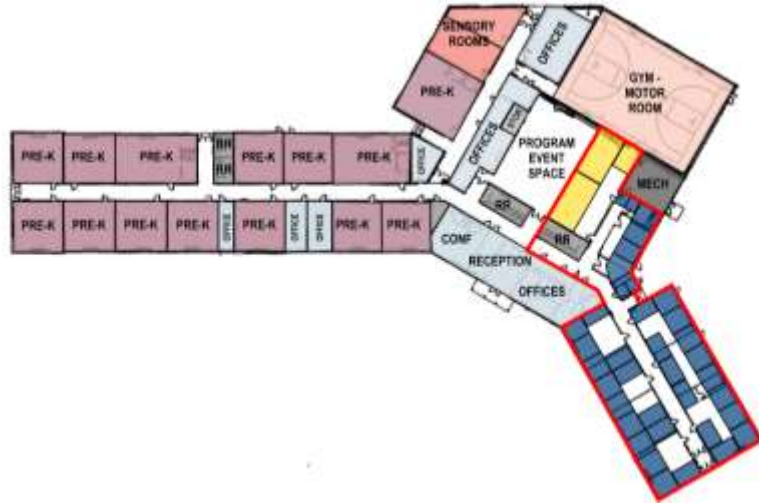


- Preschool (PK)**
  - Convert Whiteford into a Preschool Facility
- Elementary (K-5)**
  - Relocate all Preschool classes to Whiteford, 6 classrooms become available for other space needs
  - Requires K-5 redistricting
  - Surplus classrooms across the district will make it possible to redistribute Whiteford students
  - 1 classroom will need to be added
- Junior High (6-8)**
  - Surplus classrooms available for other space desires (e.g. collaboration space)
- High School (9-12)**
  - Surplus classrooms available for other space desires (e.g. collaboration space)

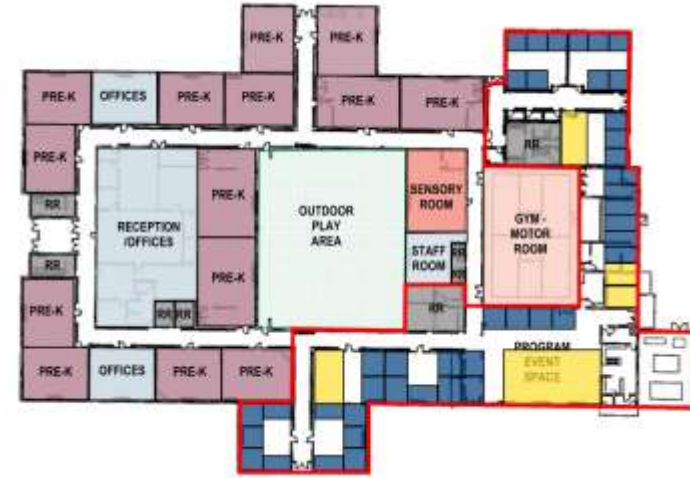
- Additional Space Needs (1)
- 9<sup>th</sup>-12<sup>th</sup> Grade
- 6<sup>th</sup>-8<sup>th</sup> Grade
- K-5<sup>th</sup> Grade
- Early Learning Center

Based on Analysis of Enrollment Projections (Moderate) Fall 2025 by PowerSchool (Nov 2024)  
Need based on Occupancy per Sylvania School District Contract- K-3 | 25 Students per Classroom, 4-12 | 29 Students per Classroom

# THE COLLABORATIVE



VS.



## 2a Sylvan

Potential Cost : \$4.6M to \$12.3M\*

### Pros

- Centrally located in the district
- Takes fewer K-5 classrooms offline
- Could fit Admin Staff, potential to sell Rieger Admin Building

### Cons

- Displaces a larger student population
- Admin would have shared program space with Early Learning Center

## 2b Whiteford

Potential Cost : \$4.6M to \$13.5M\*

### Pros

- Displaces smallest K-5 population
- Existing Pre-K building
- Larger classrooms and interior courtyard playground
- Could fit Admin Staff, potential to sell Rieger Admin Building

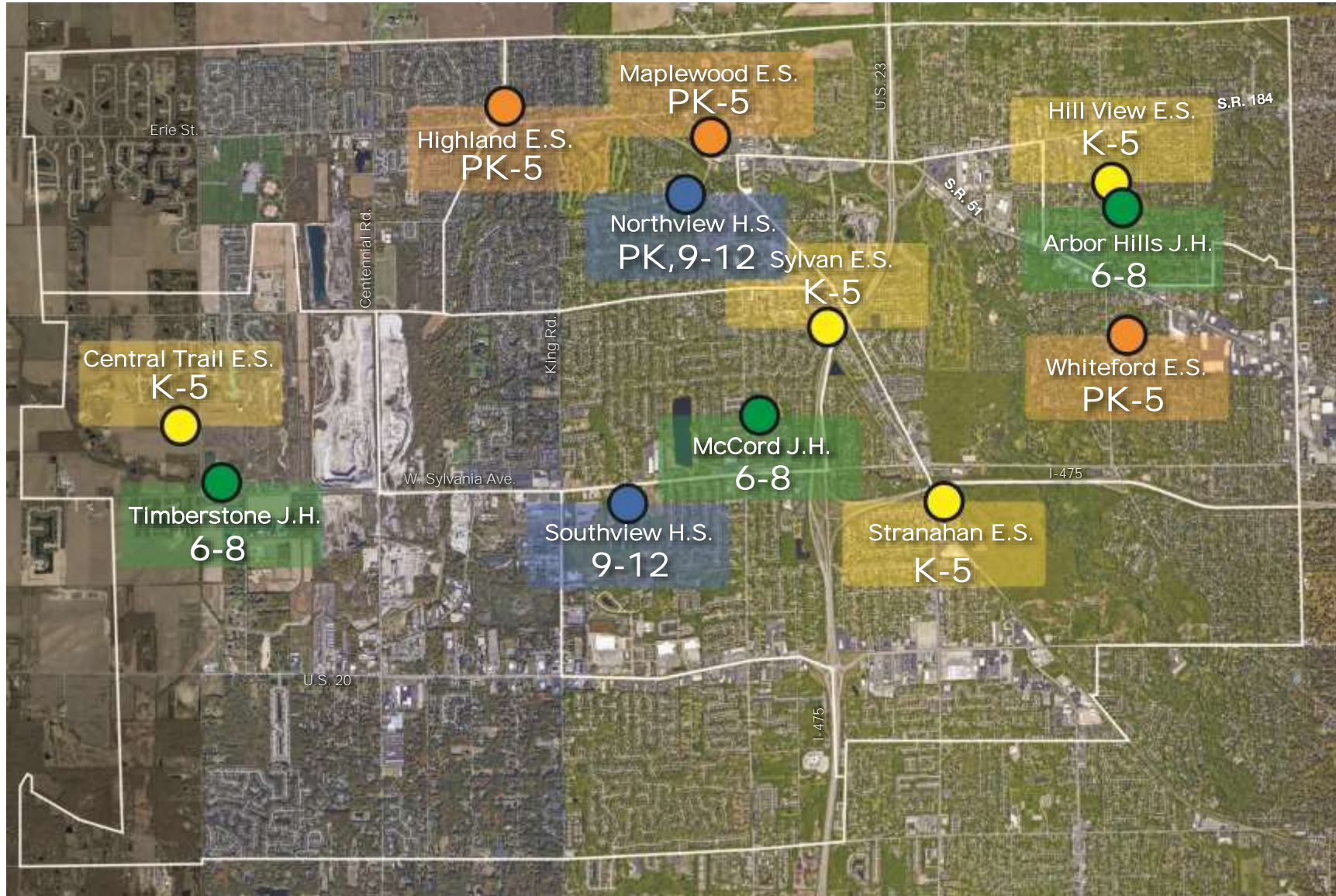
### Cons

- Takes more classrooms offline, would require potential need for additional K-5 classroom added to the district
- Located on the edge of the district

\*Rough Order of Magnitude Costs in 2024 dollars, high end includes all deferred maintenance needs



## Scenario 3 | Centralized Preschool – New Early Learning Center

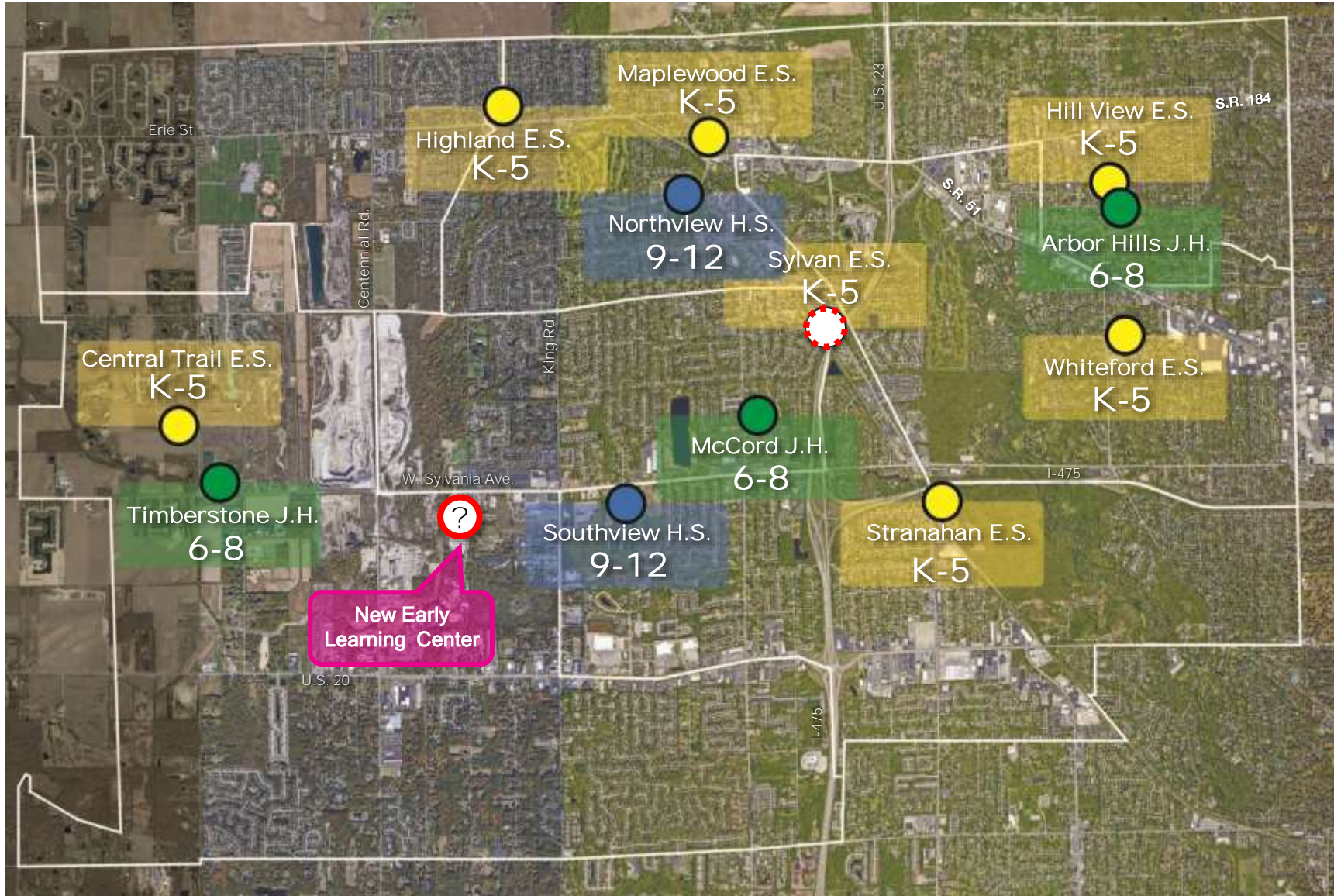


Existing District Configuration

- 9<sup>th</sup>-12<sup>th</sup> Grade
- 6<sup>th</sup>-8<sup>th</sup> Grade
- K-5<sup>th</sup> Grade
- PK-5<sup>th</sup> Grade



Scenario 3 | New Early Learning Center



Preschool (PK)

- New Early Learning Center – purchase existing facility, convert existing building, or new construction (location TBD)

Elementary (K-5)

- Remove Preschool from all facilities, 8 classrooms become available for other space needs
- If redistricting occurs, surplus classrooms across district for Sylvania space needs to be met, otherwise Sylvania will require an addition

Junior High (6-8)

- Surplus classrooms available for other space desires (e.g. collaboration space)

High School (9-12)

- Surplus classrooms available for other space desires (e.g. collaboration space)

- Add. Space Needs w/o School Redistricting (2+)
- 9<sup>th</sup>-12<sup>th</sup> Grade
- 6<sup>th</sup>-8<sup>th</sup> Grade
- K-5<sup>th</sup> Grade
- Early Learning Center

Based on Analysis of Enrollment Projections (Moderate) Fall 2025 by PowerSchool (Nov 2024)  
 Need based on Occupancy per Sylvania School District Contract- K-3 | 25 Students per Classroom, 4-12 | 29 Students per Classroom

*How much could a new early learning center potentially cost?...*

Building Construction (OFCC Standards):

- Program
  - 14 Classrooms – 1000 sf each
  - Sensory Room
  - Gross Motor Room
  - Admin & Support spaces
- Approximately 30,000 sf @ \$400 per sf
- 22% Soft Costs (FF&E, A/E, Reimbursables & Contingency)

Acquire Property:

- 3 Acres \* (\$50,000/acre)

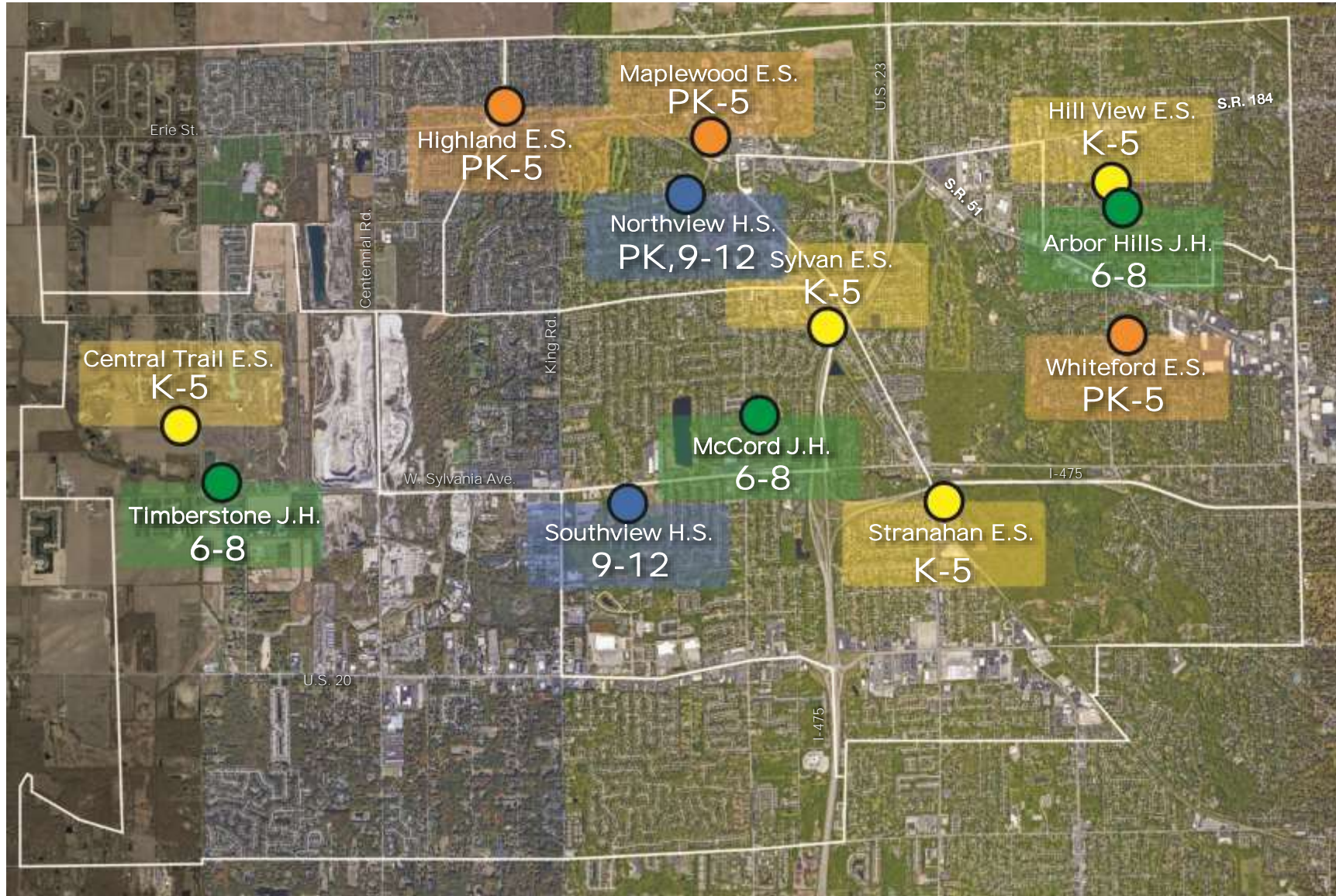
***Total Potential Project Cost: \$14,600,000\****

*\*Cost estimates are represented in 2024 dollars based on OFCC New Construction Opinion of Probable Costs*

## Scenario 4 | Redo Grade Banding



Scenario 4 | Redo Grade Banding



- 9<sup>th</sup>-12<sup>th</sup> Grade
- 6<sup>th</sup>-8<sup>th</sup> Grade
- K-5<sup>th</sup> Grade
- PK-5<sup>th</sup> Grade



Scenario 4 | Redo Grade Banding



Elementary (PK-4)

- Preschool added to buildings OR moved to new location (creates more surplus space)
- Remove 5<sup>th</sup> Grade from all Elementaries
- Surplus at 5 elementaries - potential to relocate Sylvan need and support other space needs

New Intermediate (5-6)

- Build major additions (+30 classrooms) onto McCord and relocate districtwide 5<sup>th</sup>-6<sup>th</sup> grades

Junior High (7-8)

- Remove 6<sup>th</sup> Grade from Timberstone & Arbor Hills
- McCord 7-8 gets redistributed between Arbor Hills and Timberstone

High School (9-12)

- Surplus classrooms available for other space desires (e.g. collaboration space)

- Additional Space Needs (1)
- 9<sup>th</sup>-12<sup>th</sup> Grade
- 7<sup>th</sup>-8<sup>th</sup> Grade
- 5<sup>th</sup>-6<sup>th</sup> Grade
- K-4<sup>th</sup> Grade
- PK-4<sup>th</sup> Grade

Based on Analysis of Enrollment Projections (Moderate) Fall 2025 by PowerSchool (Nov 2024)  
 Need based on Occupancy per Sylvania School District Contract- K-3 | 25 Students per Classroom, 4-12 | 29 Students per Classroom



### McCord Intermediate School

Convert McCord to an Intermediate School  
5<sup>th</sup>-6<sup>th</sup> grade facility

Would require additions including:

- 15 additional typical classrooms
- 19 additional special education classrooms
- Increased dining
- Second gymnasium
- Additional specialty classrooms
- Enhanced circulation & expanded parking

	Existing	Potential Peak Need	Delta
Typical Classroom	31	46	(15)
SE Classroom (MM/MI)	5 / 3	9 / 10	(19)

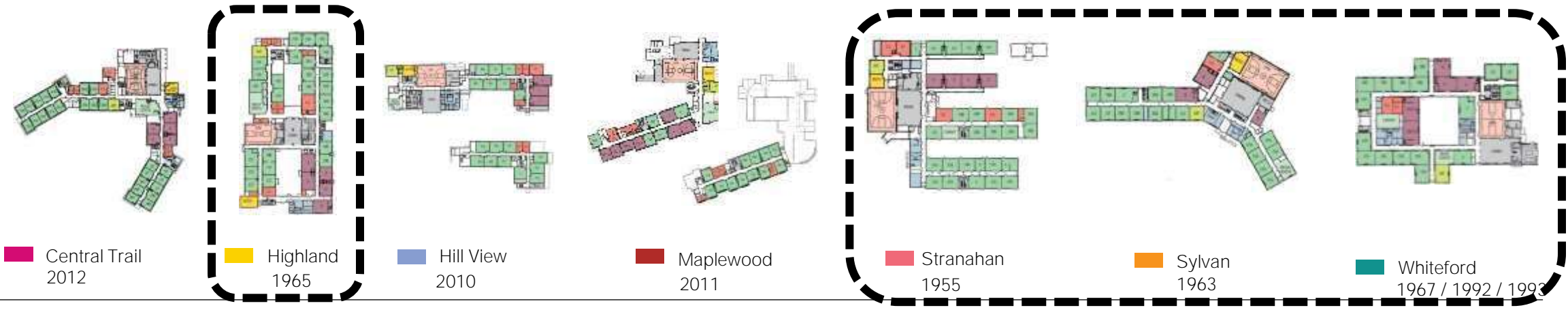


## Agenda

- 1 Process Overview
- 2 Enrollment Trends & District Capacity
- 3 A Flexible Framework for Accommodating Growth
- 4 Infrastructure & Learning Environments**
- 5 Next Steps

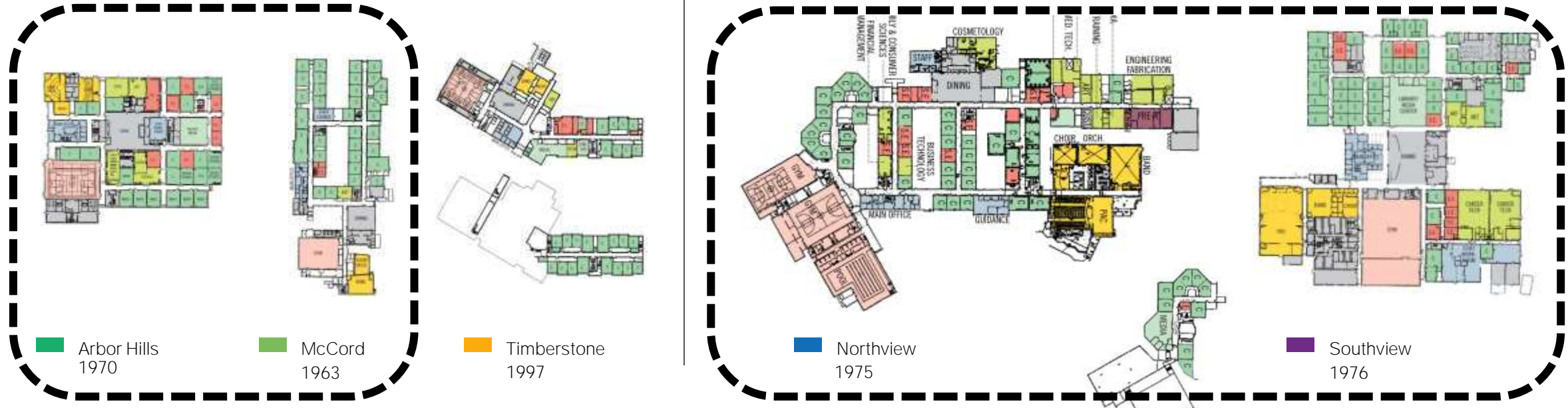
THE COLLABORATIVE  
Elementary Schools (7)

Built 1970 or before



Junior High Schools (3)

High Schools (2)





THE COLLABORATIVE

The Ohio Facilities Construction Commission’s guideline establishes a benchmark to replace versus renovate standards for school facilities at 2/3 (66%) of the cost of a new building. This means that if the cost of renovation exceeds 2/3 the cost of a new building, the state would only fund new construction.



School	Square Footage	Deferred Maintenance Cost	Sf cost (New Construction)	Replacement Cost	% of Renovation vs Replacement Cost
Central Trail	72,557	\$ 7,978,134	\$310.27	\$22,512,260	35%
Highland	70,150	\$ 8,665,413	\$310.27	\$21,765,440	39%
Hill View	46,767	\$ 5,755,684	\$336.26	\$15,722,508	36%
Maplewood	63,058	\$ 6,654,826	\$323.81	\$20,418,811	32%
Whiteford	52,916	\$ 6,390,577	\$336.26	\$17,793,534	35%
Stranahan	65,301	\$ 7,492,066	\$323.81	\$21,145,116	35%
Sylvan	49,097	\$ 5,505,642	\$336.26	\$16,509,357	33%
Timberstone	105,105	\$ 11,313,964	\$299.00	\$31,426,395	36%
Arbor Hills	79,454	\$ 8,712,422	\$318.15	\$25,278,290	34%
McCord	87,274	\$ 8,775,867	\$318.15	\$27,766,223	31%
Northview	268,408	\$ 28,368,264	\$302.91	\$81,303,467	34%
Southview	220,442	\$ 25,971,616	\$302.91	\$66,774,086	38%

**All school facilities are worth continuing to invest in...**

\*Info from Facilities Assessment prepared by Alpha Facilities Solutions in 2022



What improvements to Sylvania’s teaching environments do you feel should be prioritized?  
*Rank the following from highest to lowest.*

- 1 More spaces for project-based learning and hands-on activities
- 2 Upgraded classroom infrastructure (e.g., charging stations, outlets)
- 3 More interactive technology tools e.g., smart boards, tablets)

- 4 Flexible furniture arrangements for collaborative learning
- 5 Improved classroom lighting and acoustics
- 6 Other

## THE COLLABORATIVE

*The following are themes that reflect the most cited improvements....*

# What we heard - Learning Environments

- **More Space(s)**

- Dedicated intervention rooms, group counseling spaces
- Sensory and gross motor rooms, career tech classrooms with lab access

- **Technology**

- Enhanced sound systems, additional outlets
- Reliable WiFi and modern tech for teaching

- **Storage**

- Classroom-specific storage for modalities, building-wide storage for equipment, and district storage for furniture and tech

- **Flexible Furniture**

- Updated, adaptable furniture layouts to support changing educational needs

- **Lighting and Temperature**

- Improved, natural lighting and comfortable classroom temperatures

- **Safety Measures**

- Safer teaching environments with better visibility into classrooms

- **Accessibility**

- More accessible spaces and diverse technology to support all students, including those with disabilities



Existing Classrooms



Central Trail Elementary



McCord Jr. High School



Whiteford Elementary



Northview High School



Example Classrooms



Engaging & Encouraging Groups



Movable Furniture & White Boards



Technology Throughout



Natural Daylight



Existing Intervention & Collaboration



Stranahan Elementary



Maplewood Elementary



Timberstone Jr. High School



Southview High School



Potential Intervention & Collaboration



Inclusive Intervention Spaces



Extended Learning Zone



Dedicated Breakout Rooms



Integrated Storage



## THE COLLABORATIVE

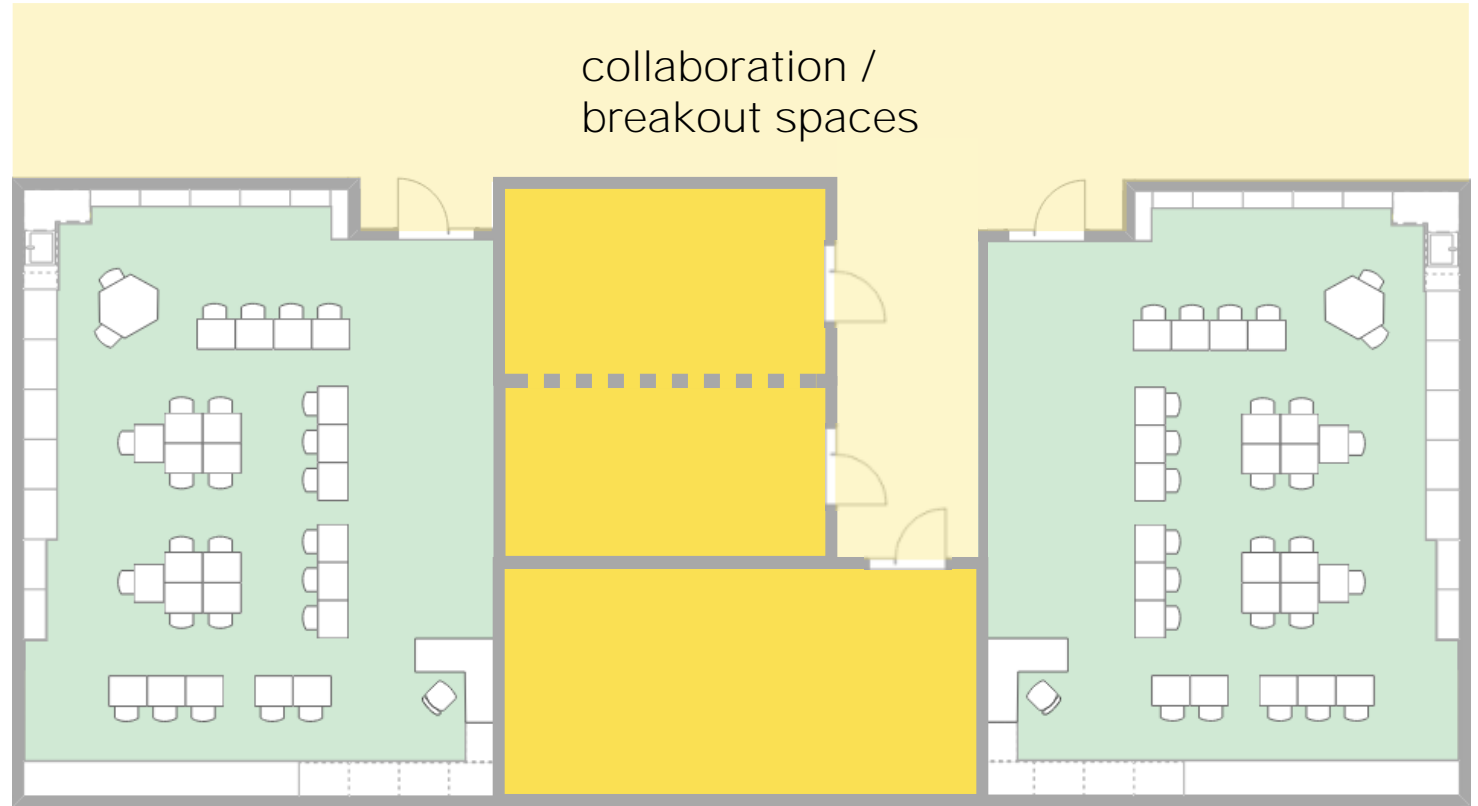
Incrementally enhance classrooms (typical and special education) over the summer:

- Address Deferred Maintenance
  - Update infrastructure
  - Update finishes
- Address specific special education classroom needs e.g. restrooms, changing tables
- Update Furniture & Technology



Surplus classrooms could become:

- Dedicated collaboration / breakout spaces
- Special Education rooms or amenities (e.g. Sensory Rooms)
- Additional Storage / Support space



example opportunity



## Agenda

- 1 Process Overview
- 2 Enrollment Trends & District Capacity
- 3 A Flexible Framework for Accommodating Growth
- 4 Infrastructure & Learning Environments
- 5 Next Steps**

This Master Facilities Planning process has prepared our district with a framework of options for accommodating the growth and growing district needs that we anticipate in the next 10 years.

- The Board of Education will examine the scenarios now that the study is complete
- The District will remain proactive with our process and planning
  - Use this as a resource to continue to monitor enrollment monthly
  - Gather a third year of enrollment data
- Growing Preschool and Special Education demands remains a need
- Improving upon current learning environments remains a priority



THE  
COLLAB  
ORATIVE

Architecture  
Planning &  
Design

TC.design