



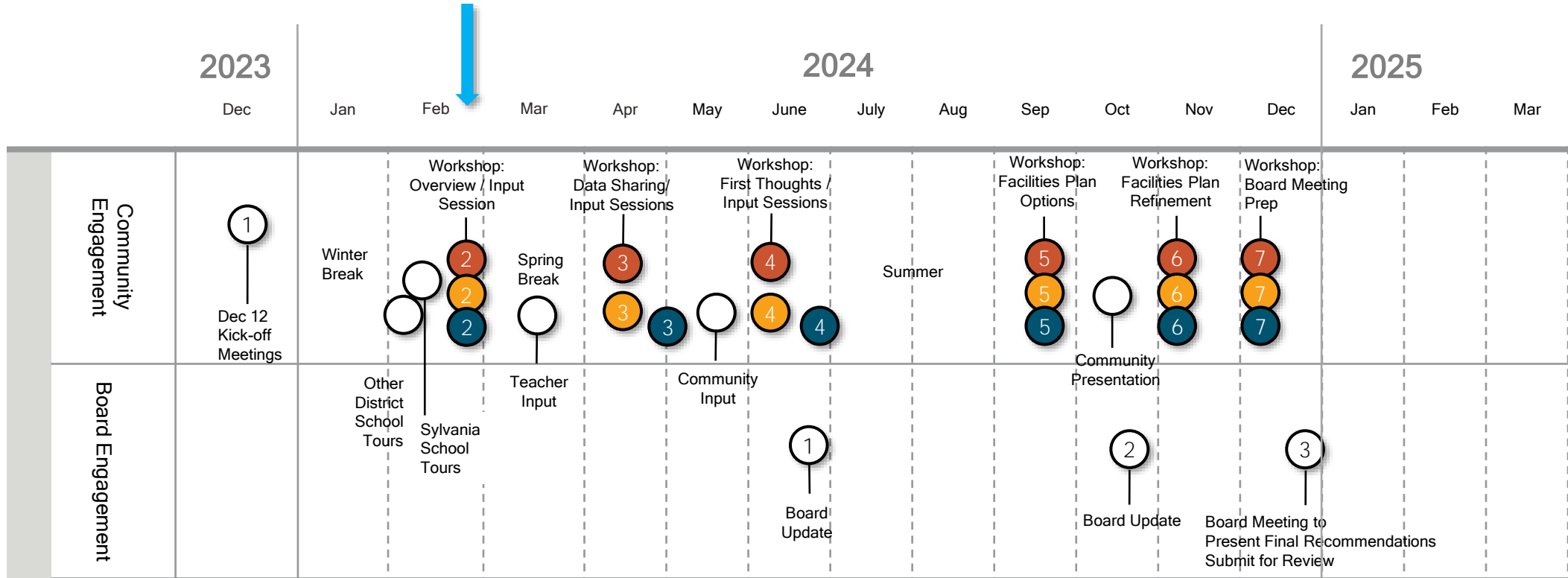
Sylvania City Schools Master Facilities Plan

February 20, 2024

Joint Committee Workshop



Preliminary Schedule



- Current & Future Facilities
- Teaching & Learning Environments
- Fiscal Responsibility

“Understand the scope of our facilities, the condition of each facility to determine the future needs”

- Complete building assessments and review results
- Study the learning spaces in each building
- Create prioritization standards based on Safety, Student Learning and Cosmetic needs
- Reassess our annual rubric and financial plan based on work completed and future needs
- Study feasibility and cost benefits of moving to one high school
- Explore and identify a location for and Early Childhood Center
- Develop a plan, funding stream and timeline to address high school facilities, more specifically replacing stadium seating at NV, replacing the track and adding synthetic turf at NV, and installing synthetic turf at SV
- Assist with creating an annual spending plan for capital projects and unforeseen costs
- Assist with the creation of a communication plan to be transparent to the board, staff and public

Agenda

- 1 Introductions
- 2 What we heard...
- 3 District Data Overview
- 4 School Tour Review
- 5 Next Steps

Teaching & Learning Environments

Designed to support 21st Century learning and instruction

10 Sylvania Community Members + Sylvania Schools Staff

- Emma Gess
- Julie Hoffman
- Brian Bollinger
- Steve Urbanski
- Christina Renz
- Karma Vince
- Ben Bolbach
- Susie Felver
- Dave France
- Dawn Watson
- Melissa Romero
- Dan Greenberg
- Jennifer Somers
- Kathleen Torti
- Andrea Johnson
- Alex Clarkson
- Peter Nafziger
- **Sheryl O'Shea**
- Kasey Vens
- Darren Estelle
- Laura Low
- Jen Pollard
- Steve Swaggerty
- Sara Cover
- Chad Kolebuck

Current & Future Facilities

Designed to consider district facilities needs based on condition and growth
10 Sylvania Community Members + Sylvania Schools Staff

- Mellisa McDonald
- Jeremy McDonald
- Emma Gess
- Julie Hoffman
- Brian Bollinger
- Ray Holston
- Tim Dillon
- Sean McCarthy
- Libby Langenderfer
- Ben Bolbach
- Justin Hittler
- Kim Conklin
- Khallil Daher
- Steffon Thomas
- Chris White
- Kimberly Beil
- John LePla
- Jill Johnson
- Michael Quick
- Jen Pollard
- Pamela Richmond
- Dawn Watson
- **Sheryl O'Shea**
- Darren Estelle
- Julie Gault
- Kelly Koller
- Nathan Blust

THE COLLABORATIVE

Fiscal Responsibility

Designed to help plan for deferred maintenance funding, identify financial implications of planning recommendations and consider levy strategies & scheduling

10 Sylvania Community Members + Sylvania Schools Staff

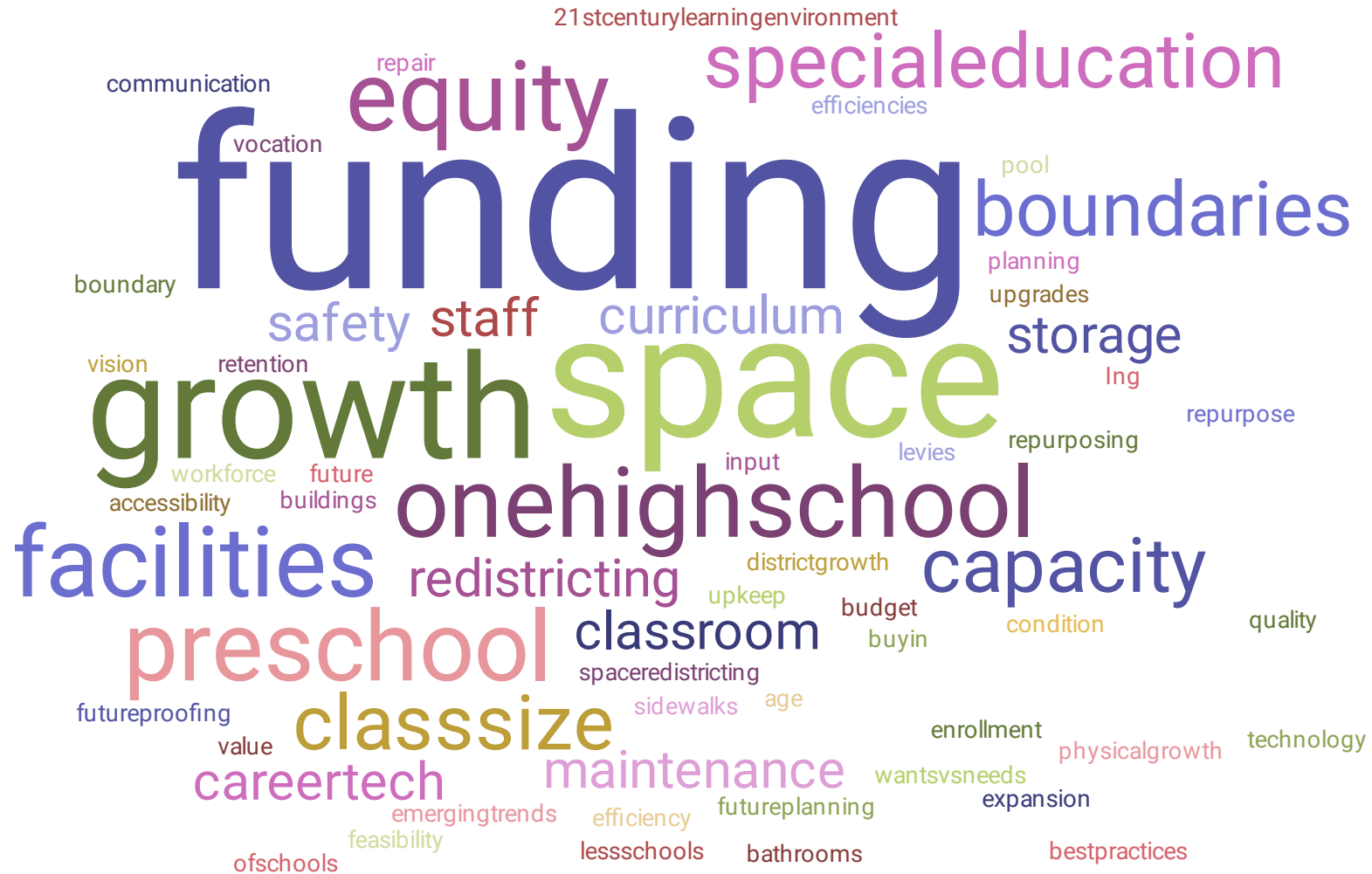
- Mellisa McDonald
- Shaun Hegarty
- Sean McCarthy
- Kelly Borgman
- Khallil Daher
- Steffon Thomas
- John LePla
- Koketta Knowles
- Adam Koch
- Mark Pugh
- Steve Swaggerty
- Julie Sanford
- Michael Quick
- John Tyburski
- Greg Feller
- Pamela Richmond
- Andrea Johnson
- Dan Greenberg
- Tammy Lavalette
- John Duwve
- Kyle Lacy

Agenda

- 1 Introductions
- 2 What we heard...**
- 3 District Data Overview
- 4 School Tour Review
- 5 Next Steps

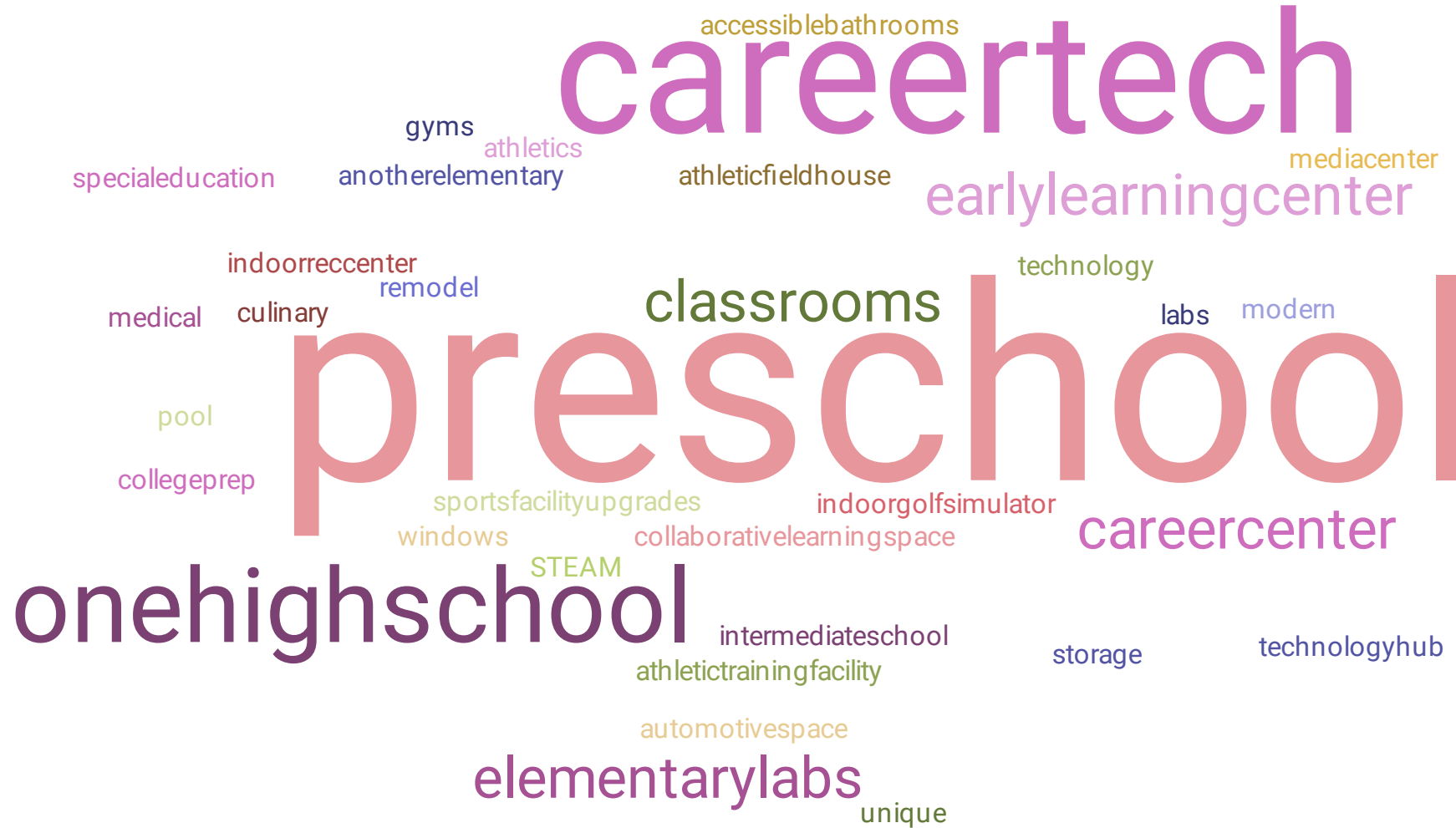
What are the top 3 issues this planning process should address?

What we heard...



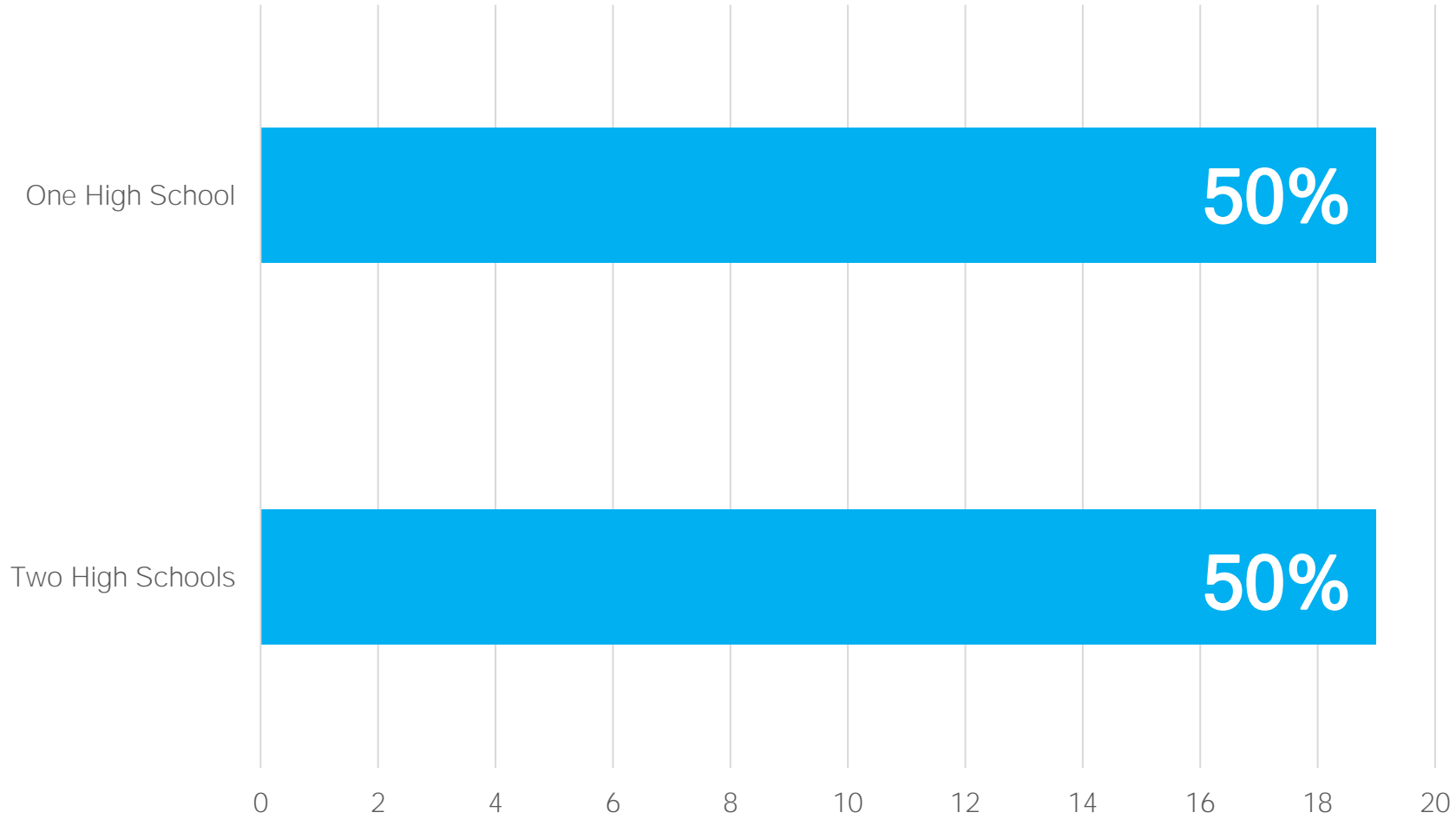
What facilities are missing in the Sylvania School District?

What we heard...



Should there be one or two high schools?

What we heard...



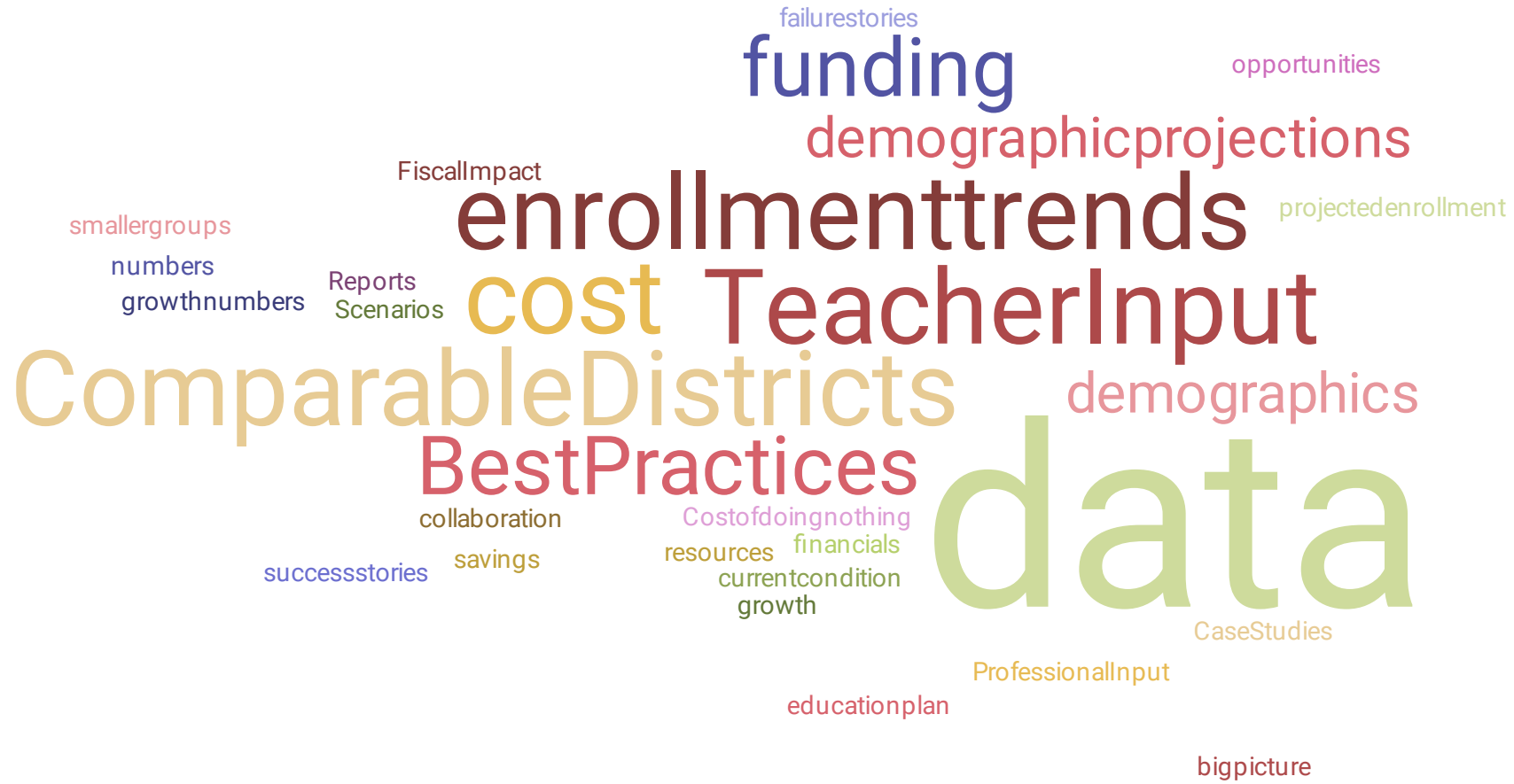
What are some effective ways to communicate effectively with the broader public?

What we heard...



What information do you need to make decisions

What we heard...

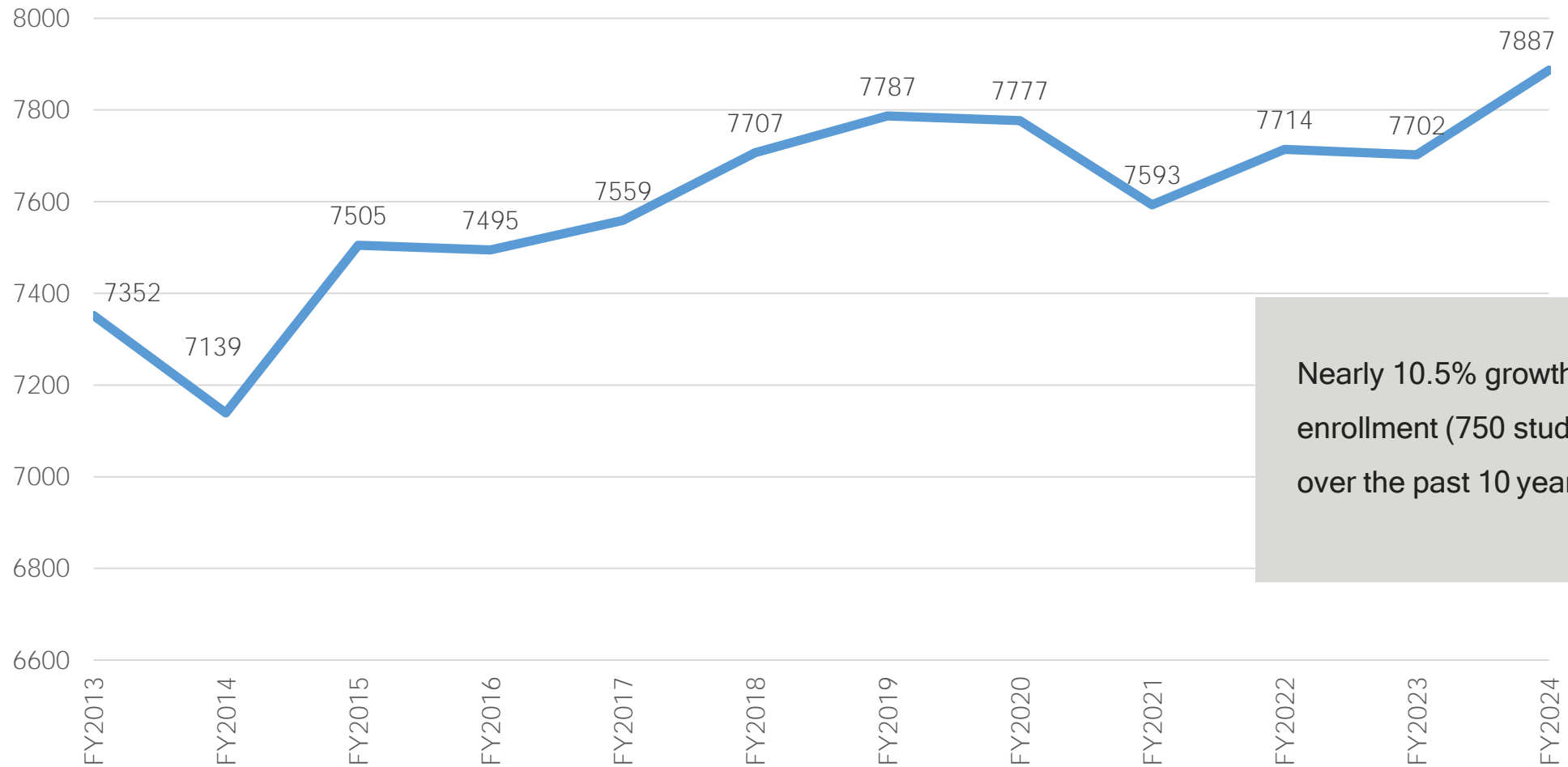


Agenda

- 1 Introductions
- 2 What we heard...
- 3 District Data Overview**
- 4 School Tour Review
- 5 Next Steps

Historic Enrollment

Sylvania City Schools Historic Enrollment



Nearly 10.5% growth in enrollment (750 students) over the past 10 years,

District-wide Enrollment Projection

- Overall, the projections forecast a slight increase across the 10-year period based upon the historical enrollment trends and any projected new residential development.

New Housing Development

- Approximately 500 new residential units are projected to be occupied over the next 10 years. The annual impact in any given year, based on the Moderate Study, is estimated in peak years to be 121 students.

Considerations*

- The share of students that require Special Education and English as a second language classes continue to rise in the US and within the District
- Need to dig deeper into Pre-K enrollment and impacts on future enrollment projections

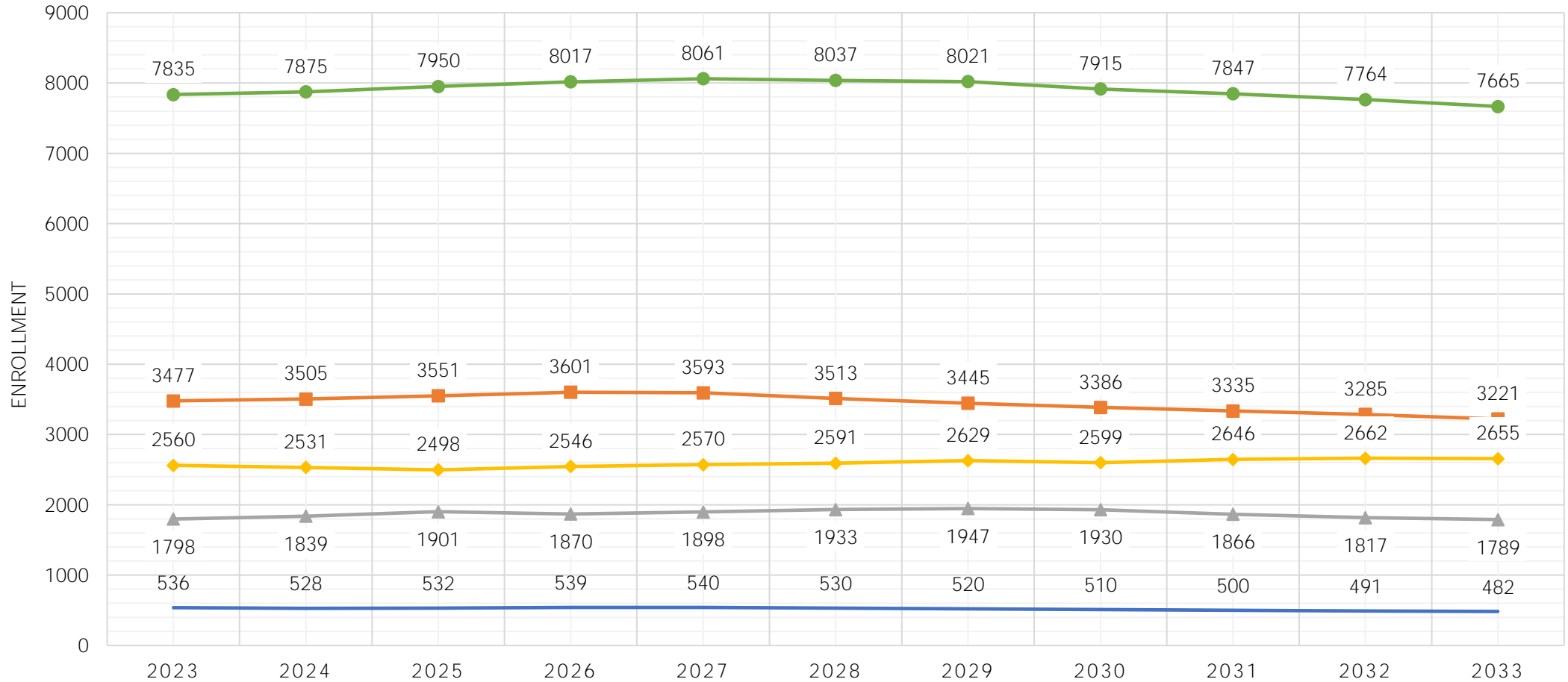
Study prepared by
PowerSchool, Folsom, CA

Enrollment projections are based upon school district provided data and applied mathematic formulas. Projections rely on past patterns and trends in student data provided within one-year intervals.

* Not based on report findings

Enrollment (Conservative Approach)

— Kindergarten — K to 5 Grade — 6 to 8 Grade — 9 to 12 Grade — Totals



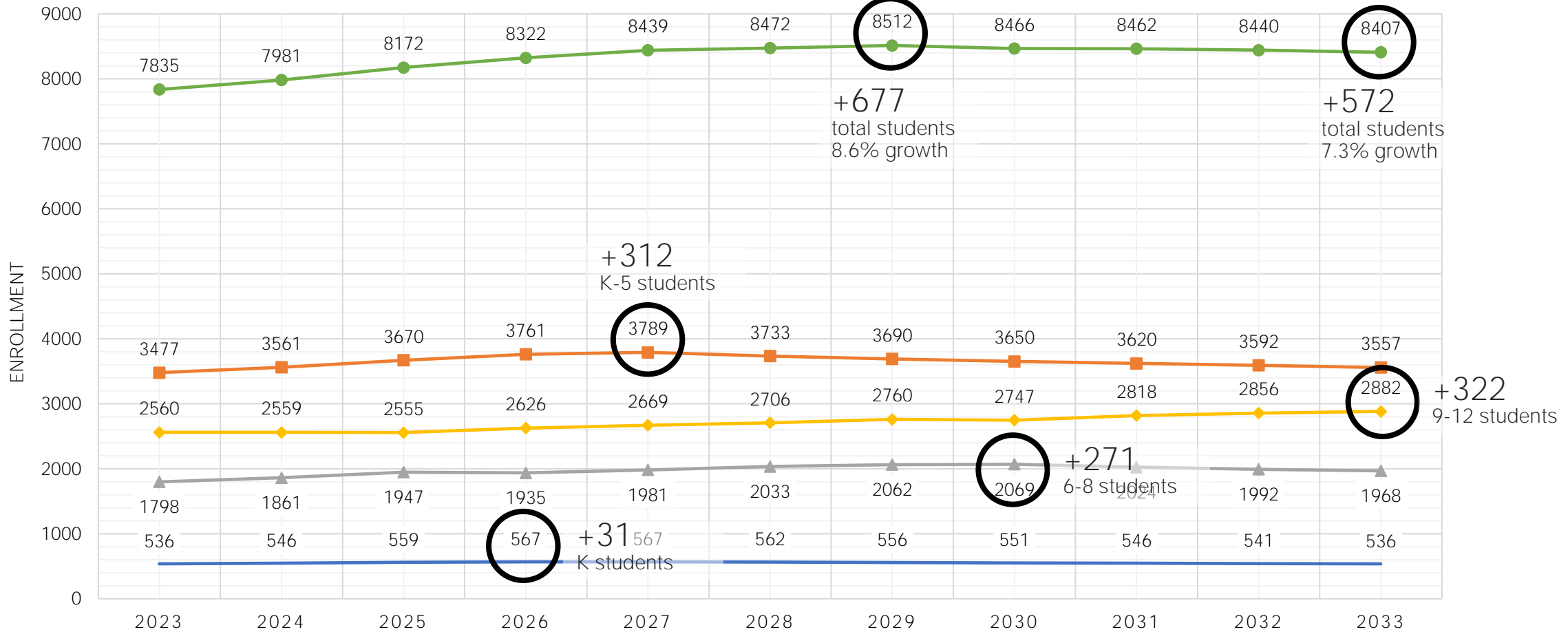
Enrollment Projections - Fall 2024

* Conservative projection is more suitable for budget planning purposes

Analysis of Enrollment Projections Fall 2024 by Power Schools

Enrollment (Moderate Approach)

— Kindergarten — K to 5 Grade — 6 to 8 Grade — 9 to 12 Grade — Totals

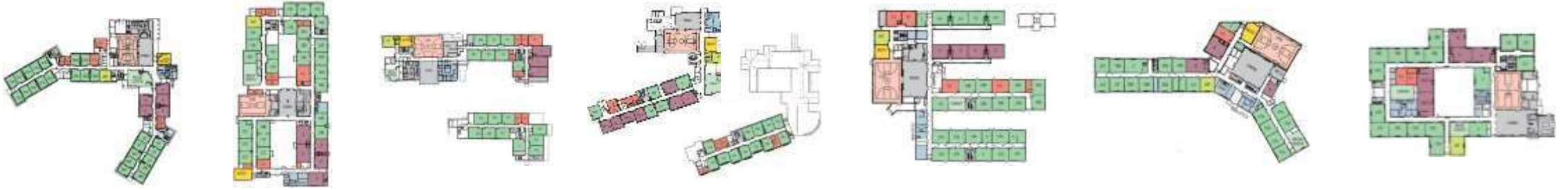


Enrollment Projections - Fall 2024

* Moderate projection is more suitable for facilities planning purposes

THE COLLABORATIVE

Elementary Schools (7)



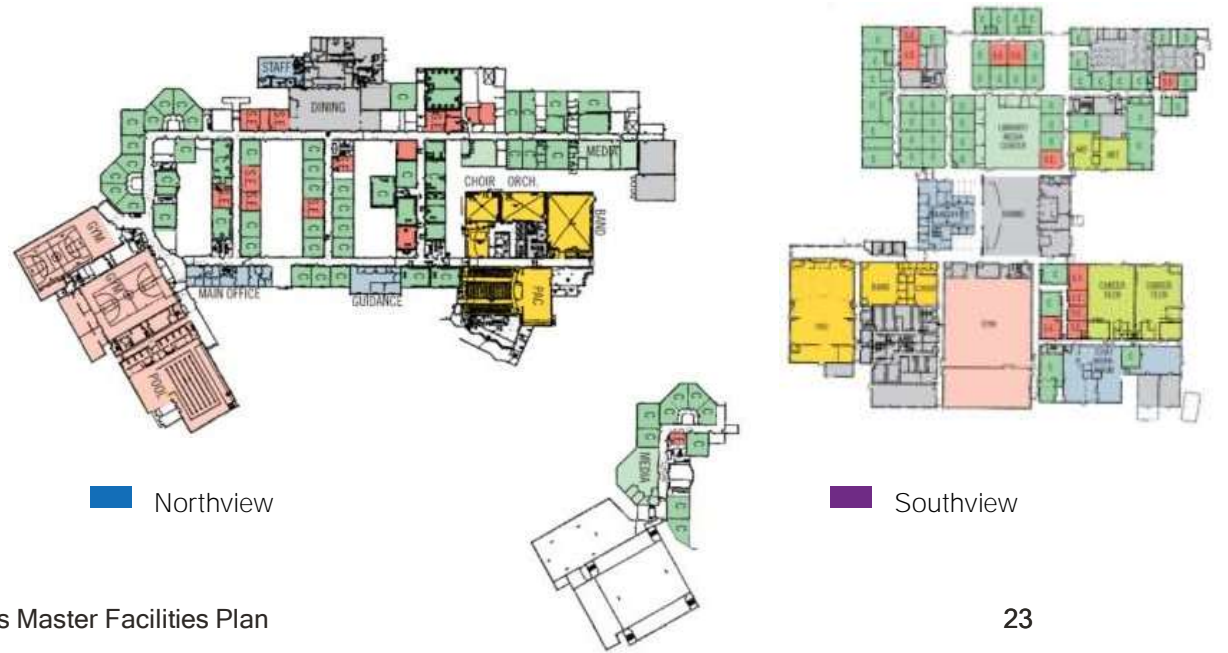
- Central Trail
- Highland
- Hill View
- Maplewood
- Stranahan
- Sylan
- Whiteford

Junior High Schools (3)



- Arbor Hills
- McCord
- Timberstone

High Schools (2)



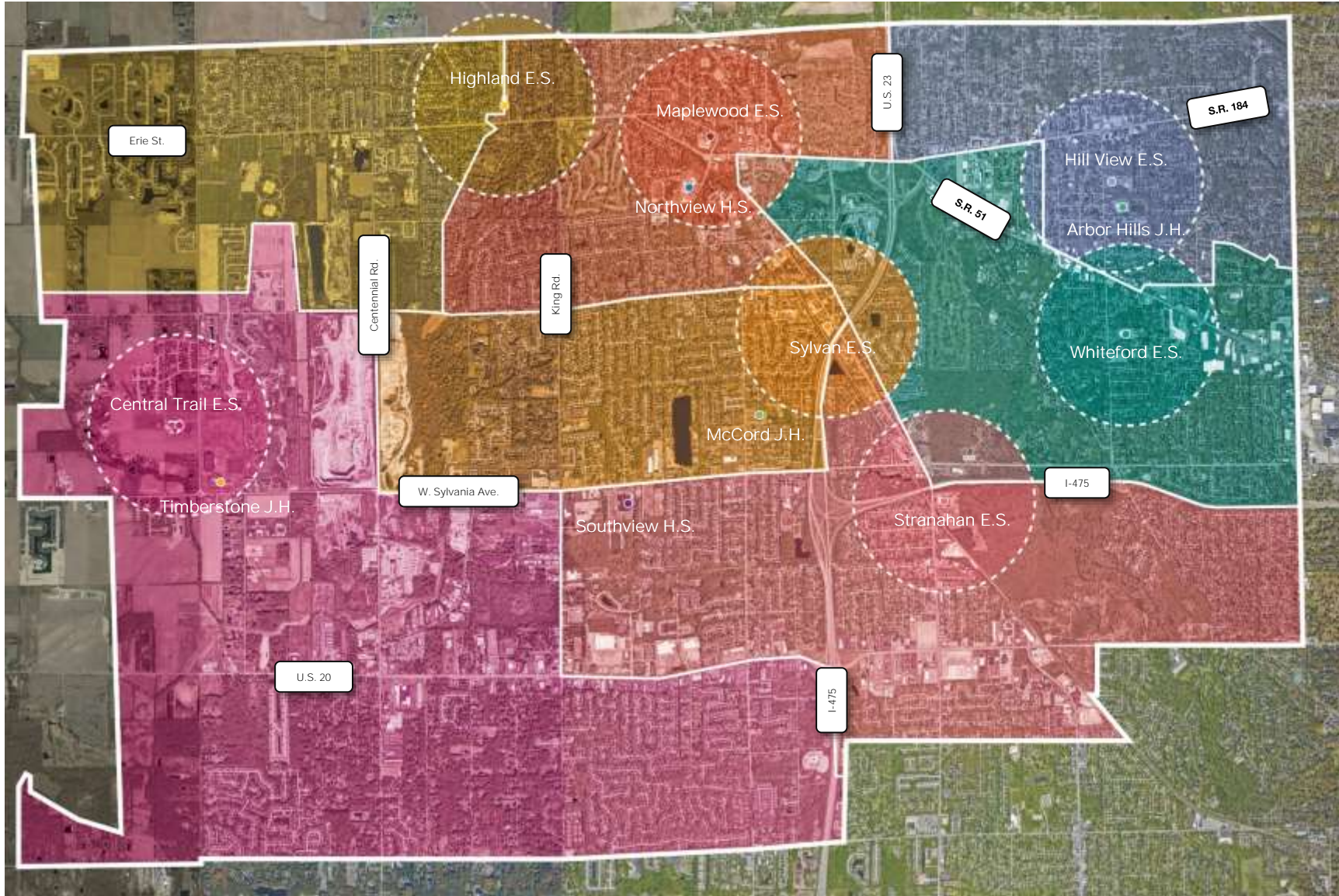
- Northview
- Southview

Sylvania Schools District
1-Mile Radius



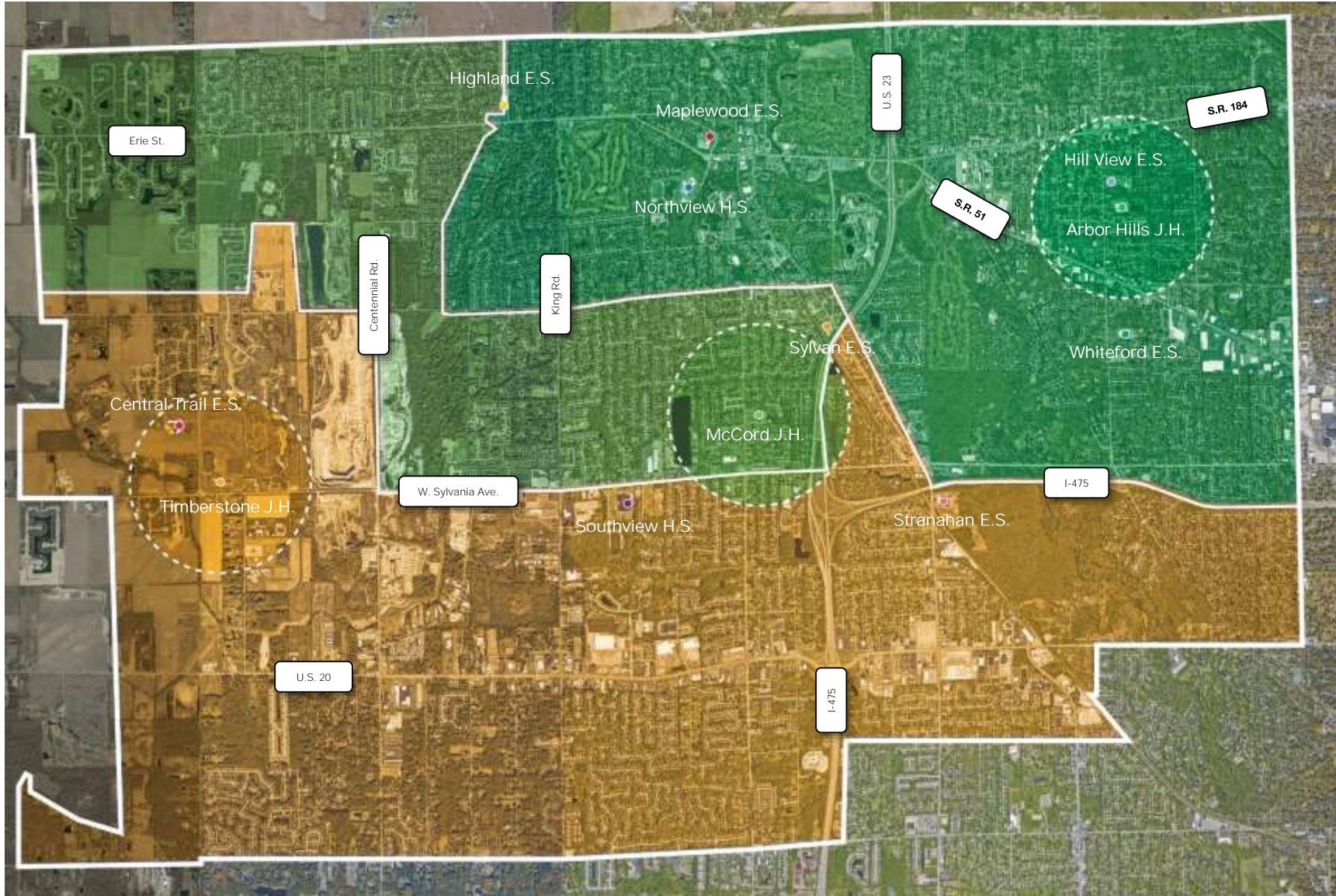
- Central Trail Elementary School
- Maplewood Elementary School
- Sylvan Elementary School
- Highland Elementary School
- Stranahan Elementary School
- Whiteford Elementary School
- Hill View Elementary School
- Timberstone Junior High
- McCord Junior High
- Arbor Hills Junior High
- Northview High School
- Southview High School

Sylvania Schools District
Elementary Schools -1-Mile Radius



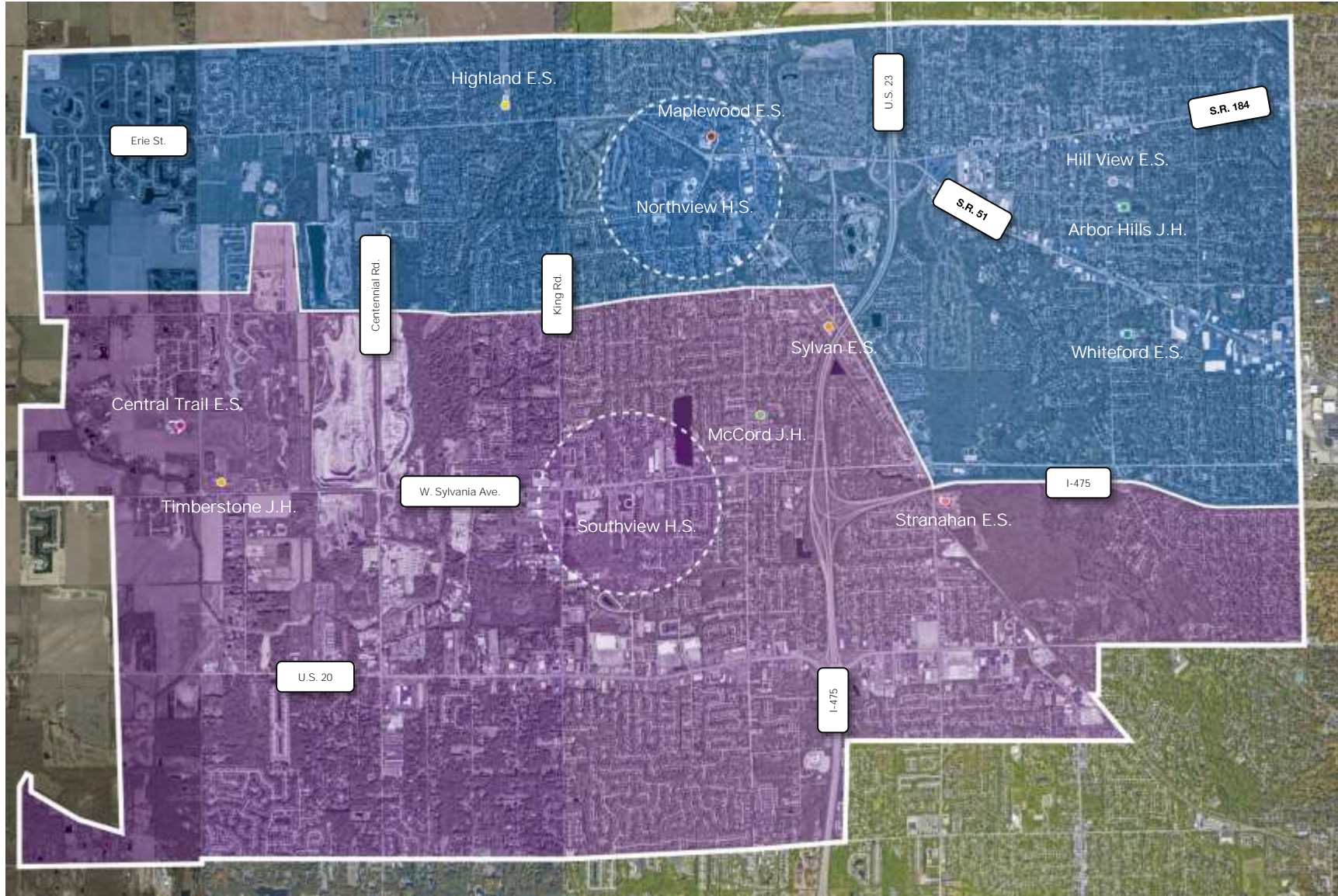
- Central Trail Elementary School
- Maplewood Elementary School
- Sylvan Elementary School
- Highland Elementary School
- Stranahan Elementary School
- Whiteford Elementary School
- Hill View Elementary School
- Timberstone Junior High
- McCord Junior High
- Arbor Hills Junior High
- Northview High School
- Southview High School

Sylvania Schools District
Junior High Schools - 1-Mile Radius



- Central Trail Elementary School
- Maplewood Elementary School
- Sylvan Elementary School
- Highland Elementary School
- Stranahan Elementary School
- Whiteford Elementary School
- Hill View Elementary School
- Timberstone Junior High
- McCord Junior High
- Arbor Hills Junior High
- Northview High School
- Southview High School

Sylvania Schools District
High Schools - 1-Mile Radius



- Central Trail Elementary School
- Maplewood Elementary School
- Sylvan Elementary School
- Highland Elementary School
- Stranahan Elementary School
- Whiteford Elementary School
- Hill View Elementary School
- Timberstone Junior High
- McCord Junior High
- Arbor Hills Junior High
- Northview High School
- Southview High School

Statistically Similar Districts

1/25/2024

Fiscal Year 2021 Similar Districts Grouping

Comparing District:

Fiscal Year:

Sorted by: Most to Least Similar

Rank	IRN	District	County	Enrollment (FTE)	% Pop. Living in Urban Areas	Pop. Density per Square Mile	Adjusted Median Gross Income (\$)	% Economically Disadvantaged	% Adults with College Degree	% Racial Minority Enrollment
	044875	Sylvania Schools	Lucas	7,777	98.6	1,854.0	45,680	20.6	50.9	23.7
1	044842	Strongsville City	Cuyahoga	5,385	99.4	1,798.0	48,562	18.3	53.2	20.0
2	044834	Stow-Munroe Falls City School District	Summit	5,304	99.6	1,882.0	44,592	22.8	51.5	14.6
3	046961	Gahanna-Jefferson City	Franklin	7,758	98.2	1,774.0	50,080	24.5	52.4	42.2
4	043737	Centerville City	Montgomery	8,063	100.0	1,807.0	50,838	15.5	59.9	25.0
5	049858	Jackson Local	Stark	5,753	96.7	1,055.0	43,559	17.2	46.5	13.8
6	044545	North Royalton City	Cuyahoga	4,000	97.8	1,438.0	45,321	18.9	47.6	16.9
7	044370	Mayfield City	Cuyahoga	4,201	94.4	1,466.0	44,517	23.1	52.9	37.4
8	046896	Pickerington Local	Fairfield	10,486	95.8	1,351.0	47,322	28.6	45.1	44.9
9	044388	Medina City Sd	Medina	6,538	89.0	929.0	45,547	19.1	44.0	12.6
10	045500	Milford Exempted Village	Clermont	6,434	99.8	1,408.0	45,064	17.6	43.3	10.5
11	050435	Kings Local	Warren	4,788	98.6	1,393.0	51,205	15.3	58.0	18.4
12	050047	Nordonia Hills City	Summit	3,529	99.2	1,169.0	47,155	17.6	45.4	23.7
13	047373	Oak Hills Local	Hamilton	7,454	100.0	2,348.0	43,293	24.1	36.8	15.4
14	050070	Twinsburg City	Summit	4,140	98.5	1,128.0	48,677	17.3	51.5	42.8
15	045138	Worthington City	Franklin	10,362	100.0	3,495.0	52,313	23.5	59.7	32.1
16	047019	Hilliard City	Franklin	16,137	97.6	1,667.0	51,563	24.1	55.3	28.8
17	047241	Beavercreek City	Greene	7,870	96.9	1,199.0	54,975	12.2	55.1	19.0
18	045047	Westerville City	Franklin	14,704	99.1	2,954.0	45,099	36.0	50.6	46.6
19	045062	Westlake City	Cuyahoga	3,401	100.0	2,027.0	50,587	16.0	57.5	19.8
20	045492	Mentor Exempted Village	Lake	7,613	99.4	1,698.0	43,381	30.2	35.6	13.5

Statistically most similar

Similar Enrollment
 2 High Schools

Statistically Similar Districts



School District	City	Total Students	Total # of Schools	Size of High School	# of High Schools	# of Jr High/ Middle Schools	# of Intermediate Schools	# of Elementary Schools	# of Primary Schools	Specialty School	Early Childhood / PreK	Online Schools
Stow-Munroe Falls City School District	Stow, OH	5,144	9	1,741	1	1	1	6				
Perrysburg Exempted Village	Perrysburg, OH	5,535	8	1,636	1	1	1	4			1	
Strongsville City	Strongsville, OH	5,670	9	1,891	1	1		5			1	1
Jackson Local	Massillon, OH	5,933	6	2,028	1	1		4				
Washington Local	Toledo, OH	6,877	7	2,247	1	1		5				
Mentor Exempted Village	Mentor, OH	7,267	13	2,405	1	2		7		1	2	
Oak Hills Local	Cincinnati, OH	7,571	9	2,325	1	3		5				
Sylvania City	Sylvania, OH	7,665	12	2,508*	2	3		7				
Gahanna-Jefferson City	Gahanna, OH	7,913	12	2,342	1	3		7	1			
Beavercreek City	Beavercreek, OH	7,994	11	1,637	1	3		6			1	
Centerville City	Centerville, OH	8,161	12	2,752	1	3		6	2			
Worthington City	Worthington, OH	10,810	19	3,331*	2	5		11			1	
Pickerington Local	Pickerington, OH	11,370	16	3,516*	2	5		7		1		1

*Combined High School Enrollment Numbers

Data / Info we'll explore by Sub Committee....

Next Steps

Teaching & Learning Environments

- Existing Facilities / District Offerings - the good & bad
- Case Studies and Examples for cutting-edge learning environments and trends
- Comparable Districts
- Examples for furnishings to support various learning styles and needs (i.e. special education, CareerTech, preschool)
- Input from Sylvania Teachers
- Typical classroom sizes
-

Current & Future Facilities

- Projected Enrollment Scenarios by grade level, special education, and facility
- Facility Capacity
- Class Sizes - Current & Future
- Comparable Districts
- Ability for Facilities to Grow- Additions
- Ability for Facilities to be renovated
- Typical classroom sizes
-

Fiscal Responsibility

- Cost of Deferred Maintenance
- Operational Needs
- Scenarios put forward by Subcommittees
- K-12 Project Cost Information
- Funding Strategies
- Levy strategies from Comparable Districts
-
- .

When poll is active respond at
PollEv.com/daveserra492

or

Send daveserra492 and your
message to 22333

What data would you like to have to help inform your decision making?



What data would you like to have to help inform your decision making?

 0

Nobody has responded yet.

Hang tight! Responses are coming in.

Agenda

- 1 Introductions
- 2 What we heard...
- 3 District Data Overview
- 4 School Tour Review**
- 5 Next Steps



Whiteford
Elementary



Arbor Hills
Jr. High

Feb 20, 2024

District Facilities



Southview
High School

Metrics

- Year Built 1967 / 1993
- Size ±53,000 sf on 8.53 acres
- Enrollment 443 students (PK-5)

Heard on the tour...

- Why is Preschool here?
- Movable Partitions
- Not enough storage
- Special Education shares space - not ideal
- ...



PROGRAMMING KEY :

 FACULTY & STAFF
 CLASSROOM
 COMPUTER LAB / MEDIA CENTER
 SPECIALTY CLASSROOM
 MUSIC ROOM
 GYM
 PRE-K / KINDERGARTEN ROOM
 SPECIAL EDUCATION
 SUPPORT AREAS

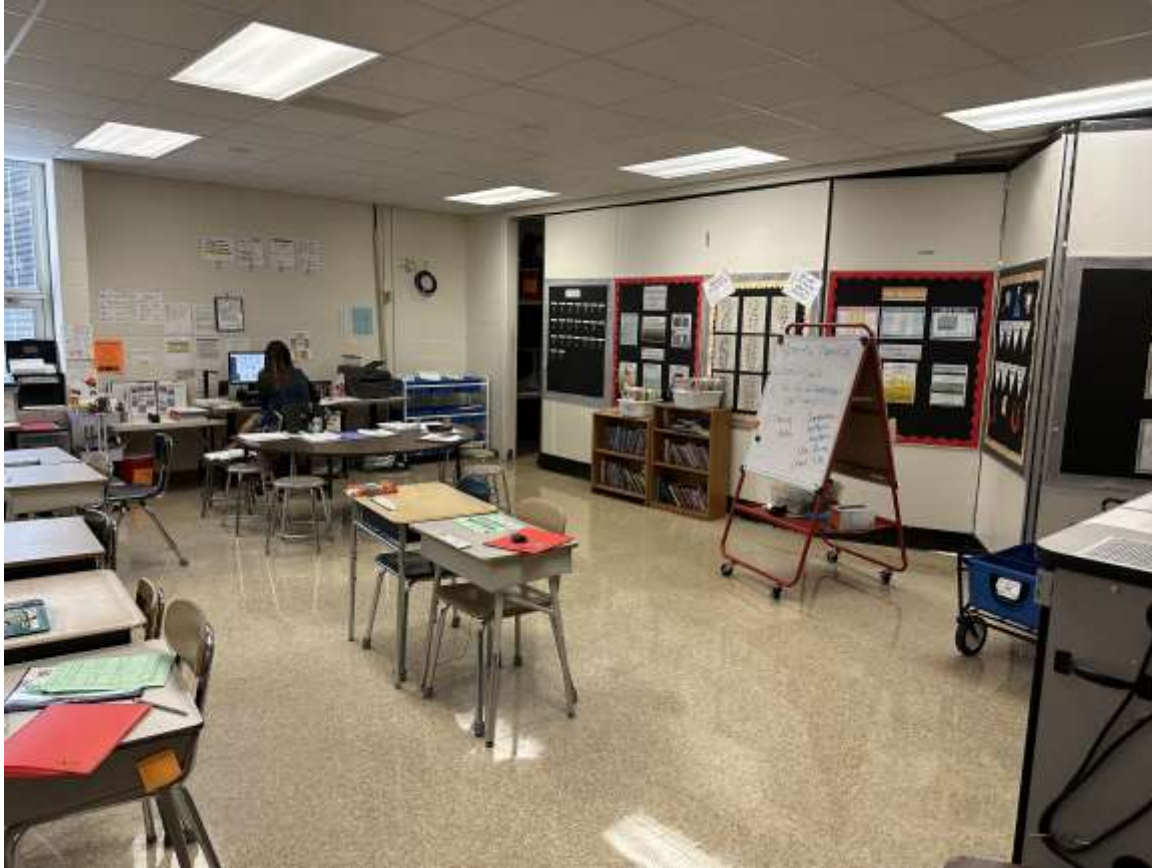
Whiteford Elementary School



Whiteford Elementary School



Whiteford Elementary School



THE COLLABORATIVE

Metrics

- Year Built 1970 / 2010
- Size ±79,500 sf on 8.53 acres
- Enrollment 546 students (6-8)

Heard on Tour...

- Classrooms without windows
- Traffic flow in Lunch Room is noisy and chaotic
- Growing number of English as a second language and Special Education classes w/out appropriate space
-

PROGRAMMING KEY :

	FACULTY & STAFF
	CLASSROOM
	COMPUTER LAB / MEDIA CENTER
	SPECIALTY CLASSROOM
	MUSIC ROOM
	GYM
	SPECIAL EDUCATION
	SUPPORT AREAS



Arbor Hills Junior High



Arbor Hills Junior High



Arbor Hills Junior High



THE COLLABORATIVE

Southview High School

Metrics

- Year Built 1976
- Size ±220,500 sf on 50.8 acres
- Enrollment 1,176 students (9-12)

Heard on Tour...

- Classrooms without windows
- Very 70s
- Special Education RR not ideal
- Old furniture
- Not enough outlets
- Storage
- More tech space
- ...

PROGRAMMING KEY :

	FACULTY & STAFF
	CLASSROOM
	COMPUTER LAB / MEDIA CENTER
	SPECIALTY CLASSROOM
	MUSIC ROOM
	GYM
	SPECIAL EDUCATION
	SUPPORT AREAS



Southview High School



Southview High School



Southview High School



Southview High School



What positive characteristics did you notice during your tour of the Sylvania City Schools?



What positive characteristics did you notice during your tour of the Sylvania City Schools?

 0

Nobody has responded yet.

Hang tight! Responses are coming in.

What negative/concerning characteristics did you notice during your tour of the Sylvania City Schools?



What negative/concerning characteristics did you notice during your tour of the Sylvania City Schools?

 0

Nobody has responded yet.

Hang tight! Responses are coming in.

Were there any additional observations you made about the schools that you would like to share?



Were there any additional observations you made about the schools that you would like to share?

 0

Nobody has responded yet.

Hang tight! Responses are coming in.

Out of District Facilities Hull Prairie Intermediate Perrysburg



Feb 20, 2024

Sylvania City Schools Master Facilities Plan



55

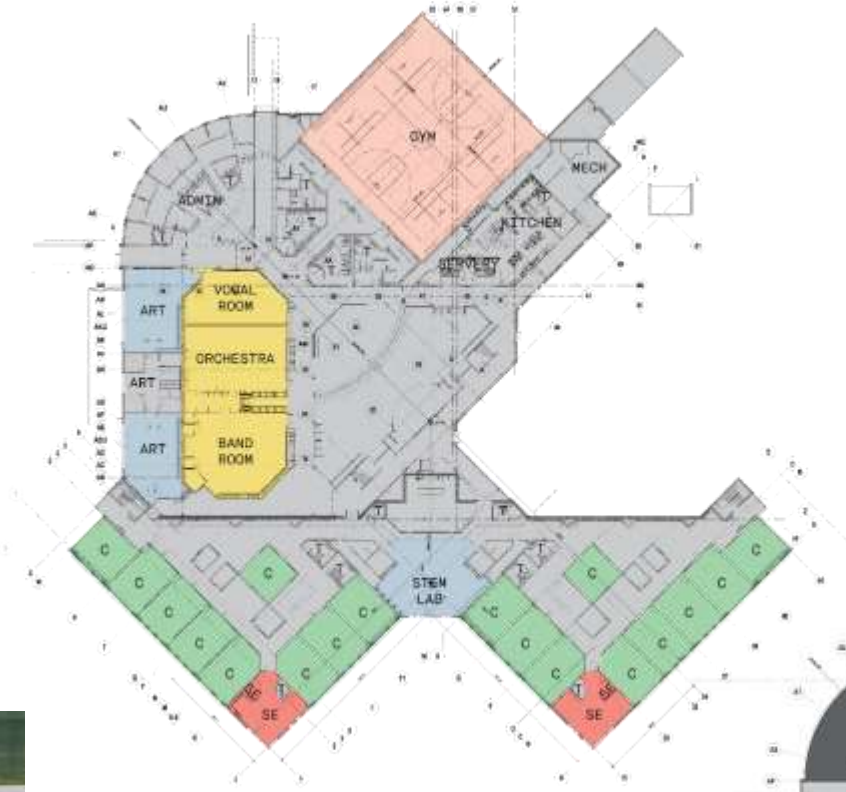
THE COLLABORATIVE

Metrics

- Year Built 2017
 - Size 144,819 sf on 16.0 Acres
 - Enrollment 805 students (5-6)
 - Capacity 1,012 (possible additional capacity up to 1,122)
 - Square Footage per student 180sf/student
- 36 total classrooms with two technology labs, flexible teaching and seating for more open and diverse learning environments.
 - Cluster completes the heart of the building with band rehearsal studios, orchestra rehearsal spaces, visual arts and stage production areas open to the dining zone.



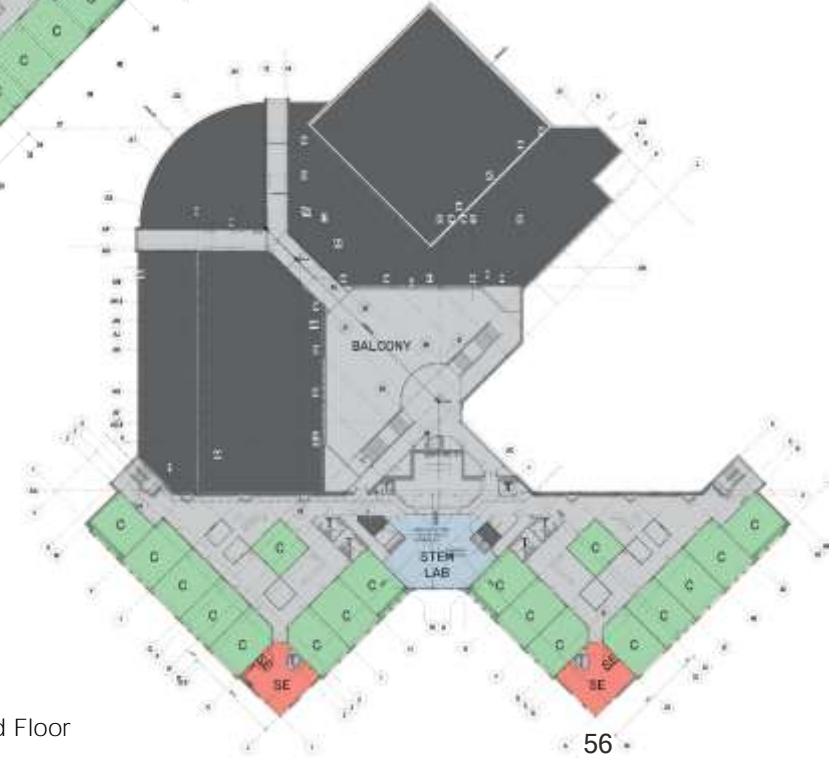
Feb 20, 2024



First Floor

PROGRAMMING KEY

- SPECIALTY CLASSROOM
- CLASSROOM
- COMPUTER LAB
- GYM
- MUSIC ROOM
- SPECIAL EDUCATION
- SUPPORT AREAS



Second Floor



active learning
classroom furniture





STEM

specialty
spaces

Feb 20, 20

Sylvania City Schools Master Facilities Plan



art



music



breakout spaces

Feb 20, 2024



small group



soft seating

What aspects or features of Hull Prairie Intermediate did you like?

What should be considered for future Sylvania City Schools
improvements?



What aspects or features of Hull Prairie Intermediate did you like?

 0

Nobody has responded yet.

Hang tight! Responses are coming in.

What aspects or features did you not like about Hull Prairie Intermediate?

What should be avoided in future Sylvania City Schools Improvements?



What aspects or features did you not like about Hull Prairie Intermediate?

 0

Nobody has responded yet.

Hang tight! Responses are coming in.



Out of District Facilities Rossford Jr / High School



THE COLLABORATIVE



Metrics

- Year(s) Built 1922, addition completed in 2020
- Size 182,000 sf total | Historic School: 52,000 sf, New Addition: 130,000 sf
- Enrollment 763 students total | 358 Junior High (6-8), 405 High School (9-12)
- Capacity 1,200 (920 students + staff)
- Square Footage per student 238 sf/student
- Project features STEAM wing that consolidated all science, performing arts, fine arts and life skills learning environments into one destination.
- 21st Century learning environments preparing students for a future work force with digital and STEM opportunities.

PROGRAMMING KEY

- SPECIALTY CLASSROOM
- CLASSROOM
- COMPUTER LAB
- GYM
- MUSIC ROOM
- SPECIAL EDUCATION
- SUPPORT AREAS

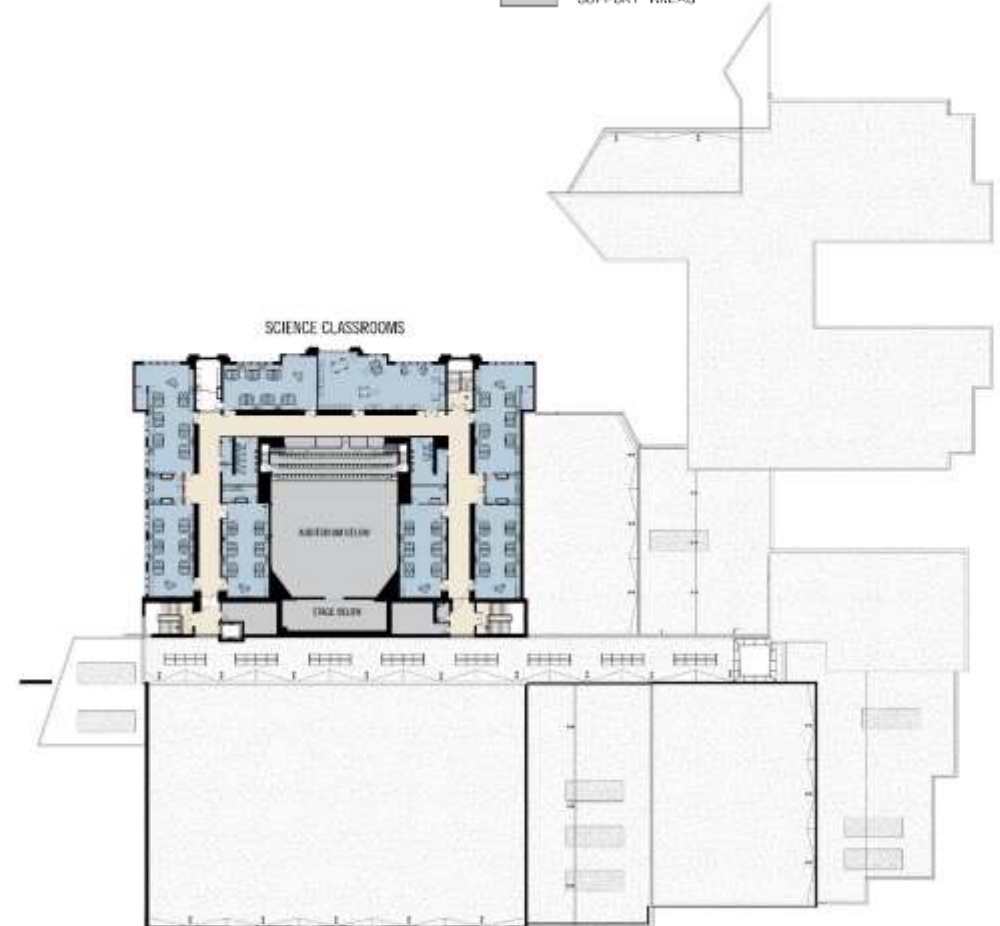
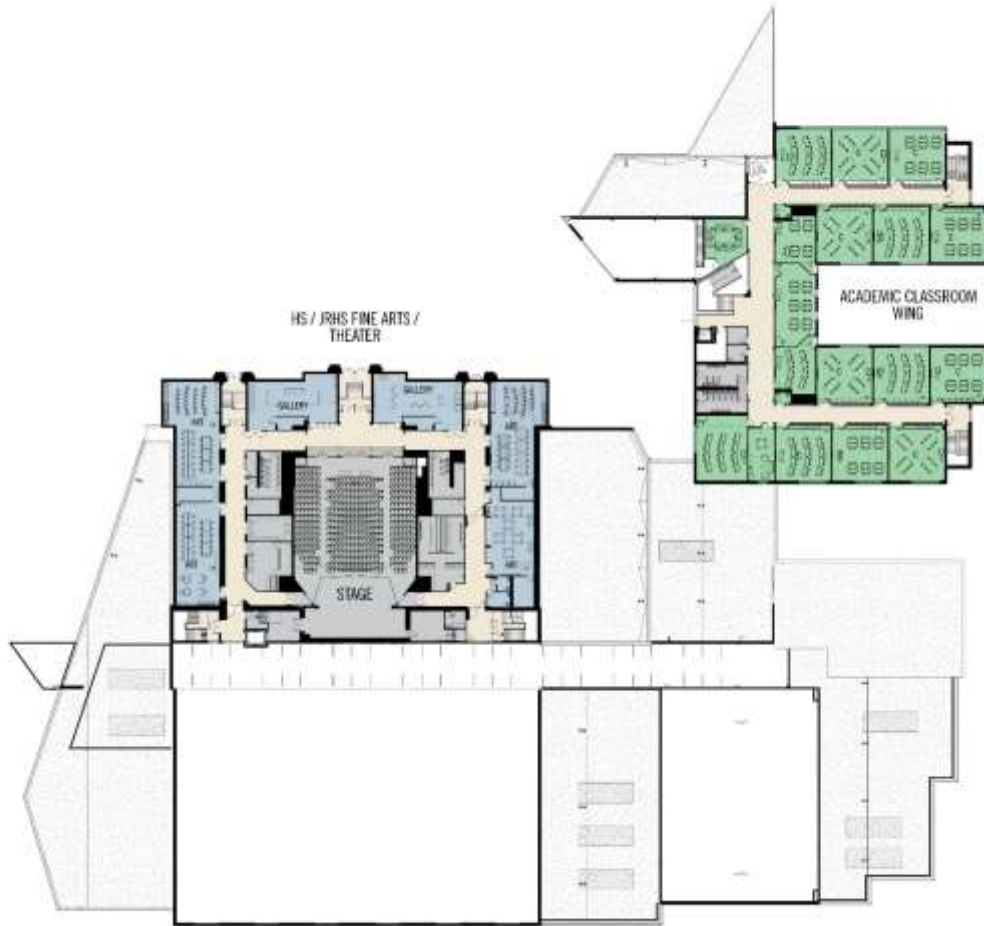


Feb 20, 2024

Sylvania City Schools Master Facilities Plan

PROGRAMMING KEY

- SPECIALTY CLASSROOM
- CLASSROOM
- COMPUTER LAB
- GYM
- MUSIC ROOM
- SPECIAL EDUCATION
- SUPPORT AREAS





specialty
spaces

Feb 20, 2024



art



music









State of Ohio Summary of New Construction "Opinion of Probable Costs"
Per Square Foot of Floor Area / Baseline Region 0 (Central Ohio)

2023 Design Manual Update



Regions	Reg Modif Factor	ELEMENTARY SCHOOLS				MIDDLE SCHOOLS				HIGH SCHOOLS			
		1-400 Students 1-50,000 SF	401-600 Students 50,001-69,360 SF	601-865 Students 69,361-100,000 SF	866 Students and up 100,001 SF and up	1-450 Students 1-67,950 SF	451-650 Students 67,951-91,650 SF	651-709 Students 91,651-100,000 SF	710 Students and up 100,001 SF and up	1-598 Students 1-100,000 SF	599-800 Students 100,001- 133,600 SF	801-1200 Students 133,601-200,400 SF	1201 Students and up 200,401 SF and up
0 - Central Ohio	NC 100												
Site		\$34.07	\$30.97	\$29.75	\$28.01	\$34.69	\$32.37	\$32.36	\$30.46	\$32.94	\$30.99	\$35.02	\$33.10
Basic Building		\$291.45	\$282.49	\$270.61	\$254.70	\$291.76	\$275.61	\$274.81	\$258.98	\$292.24	\$275.06	\$265.06	\$260.13
TOTAL		\$325.52	\$313.46	\$300.36	\$282.71	\$326.45	\$307.98	\$307.17	\$289.45	\$325.18	\$306.04	\$300.08	\$293.23
Non-Construction Costs		\$52.41	\$50.47	\$48.36	\$45.51	\$52.56	\$49.59	\$49.45	\$46.60	\$52.35	\$49.27	\$48.31	\$47.21
GRAND TOTAL		\$377.92	\$363.94	\$348.72	\$328.22	\$379.00	\$357.56	\$356.61	\$336.04	\$377.52	\$355.32	\$348.39	\$340.43
1 - Southwestern Ohio	NC 98.68												
Site		\$33.62	\$30.56	\$29.36	\$27.64	\$34.23	\$31.94	\$31.93	\$30.06	\$32.50	\$30.58	\$34.56	\$32.67
Building		\$287.60	\$278.76	\$267.04	\$251.34	\$287.91	\$271.97	\$271.18	\$255.56	\$288.38	\$271.42	\$261.56	\$256.69
TOTAL		\$321.22	\$309.32	\$296.40	\$278.98	\$322.14	\$303.92	\$303.11	\$285.63	\$320.89	\$302.00	\$296.12	\$289.36
Non-Construction Costs		\$52.41	\$50.47	\$48.36	\$45.51	\$52.56	\$49.59	\$49.45	\$46.60	\$52.35	\$49.27	\$48.31	\$47.21

Regions	Reg Modif Factor	ELEMENTARY SCHOOLS				MIDDLE SCHOOLS				HIGH SCHOOLS			
		1-400 Students 1-50,000 SF	401-600 Students 50,001-69,360 SF	601-865 Students 69,361-100,000 SF	866 Students and up 100,001 SF and up	1-450 Students 1-67,950 SF	451-650 Students 67,951-91,650 SF	651-709 Students 91,651-100,000 SF	710 Students and up 100,001 SF and up	1-598 Students 1-100,000 SF	599-800 Students 100,001- 133,600 SF	801-1200 Students 133,601-200,400 SF	1201 Students and up 200,401 SF and up
3 - Northwestern Ohio	NC 103.30												
Site		\$35.20	\$31.99	\$30.73	\$28.93	\$35.84	\$33.44	\$33.43	\$31.47	\$34.03	\$32.01	\$36.18	\$34.20
Building		\$301.07	\$291.82	\$279.54	\$263.11	\$301.39	\$284.71	\$283.88	\$267.53	\$301.89	\$284.13	\$273.81	\$268.71
TOTAL		\$336.26	\$323.81	\$310.27	\$292.04	\$337.22	\$318.15	\$317.31	\$299.00	\$335.91	\$316.14	\$309.98	\$302.91
Non-Construction Costs		\$54.13	\$52.13	\$49.96	\$47.02	\$54.29	\$51.23	\$51.09	\$48.14	\$54.08	\$50.90	\$49.90	\$48.76
GRAND TOTAL		\$390.39	\$375.95	\$360.23	\$339.05	\$391.51	\$369.36	\$368.38	\$347.13	\$389.99	\$367.04	\$359.89	\$351.67

TOTAL		\$347.98	\$335.09	\$321.09	\$302.22	\$348.97	\$329.24	\$328.36	\$309.42	\$347.62	\$327.16	\$320.79	\$313.47
Non-Construction Costs		\$56.02	\$53.95	\$51.70	\$48.65	\$56.19	\$53.01	\$52.87	\$49.81	\$55.97	\$52.67	\$51.64	\$50.46
GRAND TOTAL		\$403.99	\$389.05	\$372.78	\$350.86	\$405.15	\$382.23	\$381.21	\$359.23	\$403.58	\$379.83	\$372.43	\$363.92
5 - South Central Ohio	NC 102.98												
Site		\$35.09	\$31.89	\$30.64	\$28.84	\$35.73	\$33.34	\$33.33	\$31.37	\$33.92	\$31.91	\$36.07	\$34.09
Basic Building		\$300.13	\$290.91	\$278.67	\$262.29	\$300.45	\$283.83	\$283.00	\$266.70	\$300.95	\$283.25	\$272.96	\$267.88
TOTAL		\$335.22	\$322.80	\$309.31	\$291.13	\$336.18	\$317.16	\$316.32	\$298.07	\$334.87	\$315.16	\$309.02	\$301.97
Non-Construction Costs		\$53.97	\$51.97	\$49.80	\$46.87	\$54.13	\$51.07	\$50.93	\$47.99	\$53.91	\$50.74	\$49.75	\$48.61
GRAND TOTAL		\$389.18	\$374.78	\$359.11	\$338.00	\$390.30	\$368.21	\$367.24	\$346.06	\$388.78	\$365.90	\$358.77	\$350.58
6 - Southeastern Ohio	NC 100.80												
Site		\$34.35	\$31.22	\$29.99	\$28.23	\$34.97	\$32.63	\$32.62	\$30.71	\$33.20	\$31.24	\$35.30	\$33.37
Basic Building		\$293.78	\$284.75	\$272.77	\$256.74	\$294.09	\$277.82	\$277.01	\$261.06	\$294.58	\$277.26	\$267.18	\$262.21
TOTAL		\$328.13	\$315.97	\$302.76	\$284.97	\$329.06	\$310.45	\$309.63	\$291.76	\$327.78	\$308.49	\$302.48	\$295.58
Non-Construction Costs		\$52.82	\$50.87	\$48.75	\$45.88	\$52.98	\$49.99	\$49.85	\$46.97	\$52.77	\$49.66	\$48.70	\$47.58
GRAND TOTAL		\$380.94	\$366.85	\$351.51	\$330.84	\$382.03	\$360.42	\$359.46	\$338.73	\$380.55	\$358.16	\$351.18	\$343.16
7 - East Central Ohio	NC 107.18												
Site		\$36.52	\$33.19	\$31.89	\$30.02	\$37.18	\$34.70	\$34.68	\$32.65	\$35.30	\$33.21	\$37.54	\$35.48
Basic Building		\$312.37	\$302.78	\$290.04	\$272.99	\$312.71	\$295.40	\$294.54	\$277.58	\$313.22	\$294.80	\$284.09	\$278.81
TOTAL		\$348.89	\$335.97	\$321.93	\$303.01	\$349.89	\$330.10	\$329.22	\$310.23	\$348.53	\$328.02	\$321.63	\$314.29
Non-Construction Costs		\$56.17	\$54.09	\$51.83	\$48.78	\$56.33	\$53.15	\$53.01	\$49.94	\$56.11	\$52.81	\$51.78	\$50.60
GRAND TOTAL		\$405.05	\$390.07	\$373.76	\$351.78	\$406.22	\$383.23	\$382.21	\$360.17	\$404.63	\$380.83	\$373.41	\$364.87
8 - Northeastern Ohio	NC 111.00												
Site		\$37.82	\$34.38	\$33.02	\$31.09	\$38.51	\$35.93	\$35.92	\$33.81	\$36.56	\$34.40	\$38.88	\$36.75
Basic Building		\$323.51	\$313.57	\$300.38	\$282.72	\$323.85	\$305.93	\$305.04	\$287.47	\$324.39	\$305.31	\$294.22	\$288.74
TOTAL		\$361.33	\$347.94	\$333.40	\$313.81	\$362.36	\$341.86	\$340.96	\$321.29	\$360.95	\$339.71	\$333.09	\$325.49
Non-Construction Costs		\$58.17	\$56.02	\$53.68	\$50.52	\$58.34	\$55.04	\$54.89	\$51.72	\$58.11	\$54.69	\$53.62	\$52.40
GRAND TOTAL		\$419.49	\$403.97	\$387.08	\$364.32	\$420.69	\$396.89	\$395.84	\$373.01	\$419.06	\$394.40	\$386.72	\$377.88

OFCC New Construction
Opinion of Probable Costs

What aspects or features of
Rossford JR/HS did you like?
What should be considered for future Sylvania City Schools
improvements?



What aspects or features of Rossford JR/HS did you like?

 0

Nobody has responded yet.

Hang tight! Responses are coming in.

What aspects or features did
you not like about Rossford JR/HS?
What should be avoided in future Sylvania City Schools Improvements?



What aspects or features did you not like about Rossford JR/HS?

 0

Nobody has responded yet.

Hang tight! Responses are coming in.

What questions do you
have now?



What questions do you have now?

 0

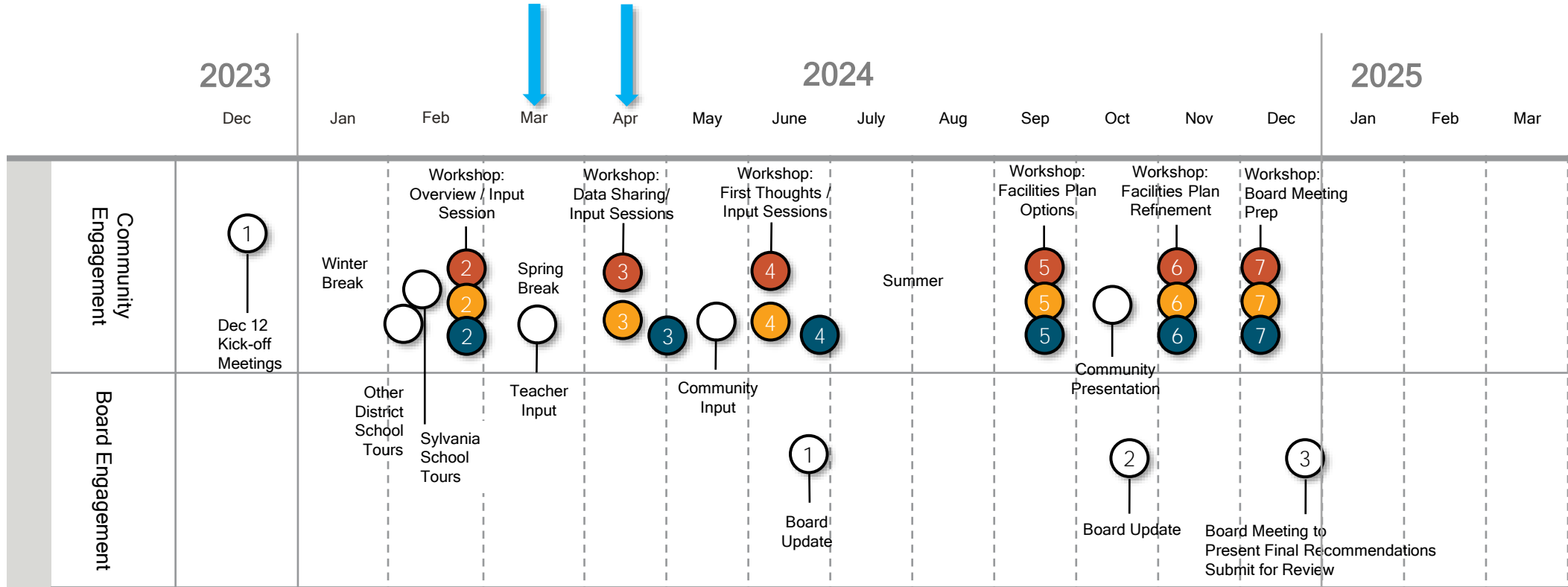
Nobody has responded yet.

Hang tight! Responses are coming in.

Agenda

- 1 Introductions
- 2 What we heard...
- 3 District Data Overview
- 4 School Tour Review
- 5 Next Steps**

Preliminary Schedule



- Current & Future Facilities
- Teaching & Learning Environments
- Fiscal Responsibility



THE
COLLAB
ORATIVE

Architecture
Planning &
Design

TC.design

