

RESTART OVERVIEW

TOLLES CAREER & TECHNICAL CENTER

2020
2021



CONTENTS:

Tolles' Decision Making
Framework Summary

2020-2021 Modes of
Instructional Delivery

General Health &
Safety Protocols

TOLLES' DECISION-MAKING FRAMEWORK SUMMARY

Instructional Delivery Model Decision Framework 2020-2021 for Restart:

- Consideration of the alert levels of Statewide COVID-19 Risk Level Advisory System for all of the counties Tolles serves.
- Ability to follow Madison Public Health Protective Actions and Social Distancing Requirements.
- Monitor and assess community and local conditions through the health departments of Franklin, Madison and Union counties.
- Consideration of teacher and staff COVID-19 related absenteeism and the availability of substitutes.
- Consideration of student COVID-19 related absenteeism and illness.

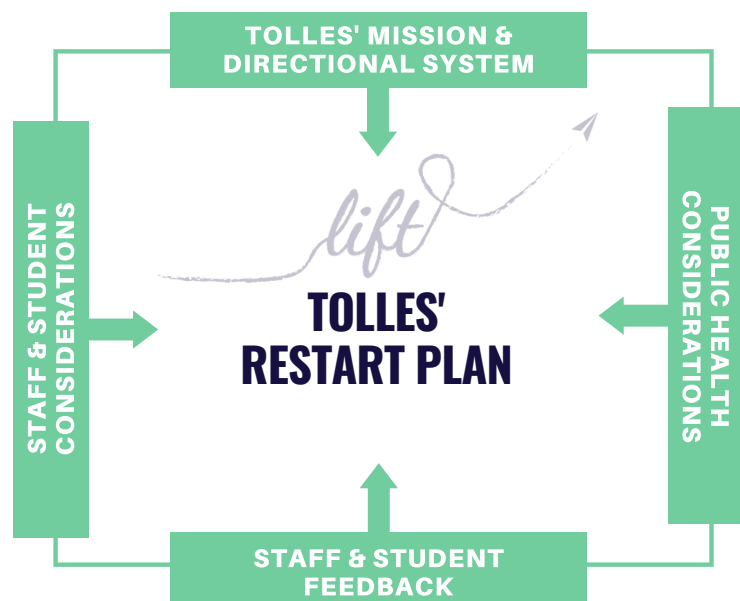
This Decision Making Framework is explained more in-depth in the infographic that follows.

Tolles' Mission

Our mission is to create an experience that goes beyond our students', families', and partners' expectations with marketable skills and positive relationships to ensure all Tolles' students are prepared for *their* successful futures.

We considered the following:

- Staff and student health and well-being.
- Minimizing the potential of internal community spread.
- Potential teacher and staff COVID-19 related absenteeism and the ability to secure substitutes.
- Potential student COVID-19 related absenteeism and illness.



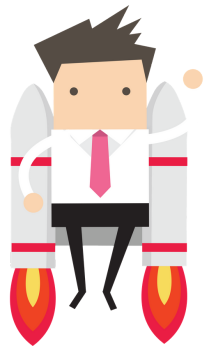
We considered the following:

- Ohio Public Health COVID-19 Risk Level Advisory System.
- Ability to follow the protective actions and physical distancing requirements defined by Madison Public Health.
- How to monitor and assess community and local conditions through the health departments of Franklin, Madison and Union Counties.
- Recommendations provided by other agencies.

Important concepts from the feedback we received:

- to balance the priorities of health and wellness with an effort to provide high-quality career-technical and academic education.
- to prioritize hands-on career-technical instruction that is less likely to be mastered in a remote environment.
- to provide additional modes of support to staff and students if remote instruction is required.

2020-2021 MODES OF INSTRUCTIONAL DELIVERY -- OVERVIEW



Unless circumstances change, we do not expect to be able to return to full-time, face-to-face instruction during the 2020-2021 academic year. We will consider transitioning to full-time, face-to-face instruction only if Madison, Union **AND** Franklin Counties are designated as yellow or orange counties in the Statewide COVID-19 Risk Level Advisory System, and we are able to meet the requirements outlined by Madison Public Health. With this in mind, we will consider the following modes of instructional delivery during the 2020-2021 academic year.

LEVEL 1 BLENDED LEARNING

Students will attend Tolles' Career Campus two (2) days per week to participate in face-to-face academic and career-technical coursework. 50% of students will be on campus Mondays/Tuesdays or Thursdays/Fridays.

LEVEL 2 BLENDED LEARNING

Students will attend Tolles' Career Campus one (1) day per week for face-to-face, career-technical instruction. All academic courses will be completed remotely. 25% of students will be on campus Mondays, Tuesdays, Thursdays and Fridays.

FULL-TIME REMOTE INSTRUCTION

All students will complete both academic and career-technical coursework remotely.

The Blended Learning Modes will be our default modes of instruction for the year. We will consider moving into other instructional modes, based on the Statewide COVID-19 Risk Level Advisory System.

We will consider this mode of instruction only if any of the counties we serve are designated as purple counties in the Statewide COVID-19 Risk Level Advisory System, or if more than 50% of our student population are assigned to remote learning by the associate district.

*All plans are subject to change based on evolving conditions data about the status of the pandemic, and recommendations and guidance from public health authorities and the scientific community.



Level 1 Blended Learning -- 50% of students on campus two (2) days per week.

Students attend Monday/Tuesday or Thursday/Friday

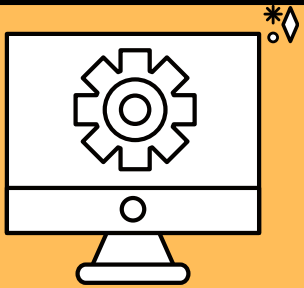
- Students will follow their regular schedule -- academic and career-technical -- two (2) days per week.
- No visitors, volunteers or face-to-face customer service.
- On the days students are not on the career campus, they will be required to complete online learning activities.
- Students and staff must adhere to all safety and physical distancing protocols.



Level 2 Blended Learning -- 25% of students on campus one (1) day per week.

Students attend Monday, Tuesday, Thursday or Friday

- Students will attend Tolles' Career Campus one (1) day a week to complete the hands-on components of their career-technical coursework.
- On the days students are not on the career campus, they will be required to complete online learning activities.
- All academic coursework will be completed remotely, with optional face-to-face time provided when additional academic support is needed.
- No visitors, volunteers or face-to-face customer service.
- Students and staff must adhere to all safety and physical distancing protocols.



Full-Time Remote Learning -- 100% of students will complete academic & career-technical coursework remotely

Students will learn from home

- Students will complete all academic & career-technical coursework remotely.
- While fully remote, optional face-to-face time may be provided for additional support, if possible.
- We will consider implementation of this mode of instructional delivery only if any of the counties we serve are designated as purple counties in the Statewide COVID-19 Risk Level Advisory System.



Full-Time Face-to-Face -- All students will follow their regular schedules every day

Students attend daily with increased COVID-19 mitigation practices.

- Students will attend Tolles' Career Campus five (5) days a week to complete both academic and career-technical coursework.
- No visitors, volunteers or face-to-face customer service.
- Students and staff must adhere to all safety and physical distancing protocols.
- We will consider implementation of this mode of instructional delivery only if Madison, Union AND Franklin Counties are designated as yellow or orange counties in the Statewide COVID-19 Risk Level Advisory System.

GENERAL HEALTH & SAFETY PROTOCOLS

In order to return to any on-site instruction, the following general expectations and protocols will be in place for all staff and students when they are in the building. **Detailed directives for staff and students will be shared prior to the start of the year and will be reinforced consistently.**

SYMPTOM ASSESSMENT PROTOCOL

- All students and staff members must conduct a daily wellness check on themselves prior to reporting to Tolles. Students and staff may not report to school if they:
 - have symptoms indicative of COVID-19.
 - have a household member with symptoms.
 - have a household member that is a confirmed COVID-19 case.
 - are quarantined.
- Tolles staff will observe students for COVID-19 symptoms during their time at school.

FACIAL COVERING PROTOCOL

- All Tolles' staff and students are required to wear a face-covering. Individuals who cannot wear a face-covering because of a medically documented breathing issue will be expected to wear a clear face shield. This exception will only be made when an order from a physician is submitted to administration. A Facial Covering Information and Acknowledgement form must be submitted by all staff and students.
- Tolles Career & Technical Center will provide one cloth facial covering for all staff and students. If staff or students forget to wear a facial covering to school, disposable face masks will be available for student and staff use, if available.

PHYSICAL DISTANCING PROTOCOLS

- Students and staff will follow all physical distancing protocols established by Madison Public Health. Three-six (3-6) feet of social distancing is required, with six (6) feet being optimal.
- When navigating the building, both staff and students will follow all directional and physical distancing signage to help mitigate exposure.
- Classrooms and lab settings (as much as possible) will be organized for social distancing prior to staff arrival. Desks will all face one direction and seats will be marked for social distancing. Career-Technical teachers will be asked for input on the lab/classroom set-up given the variety of activities in a lab setting.
- Breakfast and lunch will be Grab-and-Go. Students will eat with their lab group in a designated space, commons - one student per table, small groups in a classroom, or appropriate lab settings. Payment will be processed with minimum contact and all physical distancing protocols will be followed.
- Staff will help to enforce physical-distancing guidelines on the Career Campus.

CLEANING & HYGIENE PROTOCOLS

- Frequent hand washing and the use of hand sanitizer is required. Sanitation stations will be strategically placed in common areas throughout the building.
- All staff members will be given sanitation supplies and will be expected to sanitize workspaces when occupants change.
- Maintenance staff will disinfect high touch surfaces every two (2) hours in common spaces. All areas will receive a full sanitization daily.
- Staff will eliminate the use of shared classroom materials as much as possible. If this is not possible, the item(s) will be sanitized both before and after each use.
- Staff and students will work to ensure classrooms and work areas remain decluttered in order to help with sanitization.

OTHER PROTOCOLS

- Both staff and students are encouraged to have their own bottles of water. Drinking fountains will not be available on the Career Campus; bottle refilling stations will be available.
- Staff and students will demonstrate a positive attitude and outlook.