



When Someone Gets Sick

Isolate

Students and staff who become sick at school or arrive sick will be immediately isolated and sent home as soon as possible.



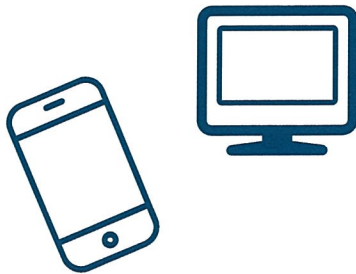
Clean

Areas used by the individuals with COVID-19 will be closed off. Cleaning staff will clean and disinfect all areas (e.g., offices, bathrooms, and common areas) used by the ill persons.



Coordinate

The school will immediately notify the Erie County Health Department, who will help administrators determine a course of action.



Communicate

Use the established channels of communication to communicate dismissal decisions and the possible COVID-19 exposure with staff, parents, and students.



Closure

A short-term building closure may be considered if multiple linked cases are identified.

