



When Someone Gets Sick

Isolate

Students and staff who become sick at school or arrive sick will be immediately isolated and sent home as soon as possible.

STEP
1



STEP
2

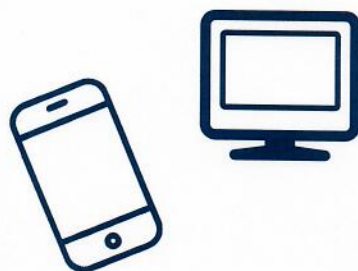
Clean

Areas used by the individuals with COVID-19 will be closed off. Cleaning staff will clean and disinfect all areas (e.g., offices, bathrooms, and common areas) used by the ill persons.

Coordinate

The school will immediately notify the Erie County Health Department, who will help administrators determine a course of action.

STEP
3



STEP
4

Communicate

Use the established channels of communication to communicate dismissal decisions and the possible COVID-19 exposure with staff, parents, and students.

Closure

A short-term building closure may be considered if multiple linked cases are identified.

STEP
5





Returning to School

Any student or staff member who has received a laboratory-confirmed diagnosis of COVID-19 or who is **SUSPECTED** of having COVID-19 must meet all of the following criteria before returning to school or work.

**10
DAYS**

At least 10 days from symptom onset or positive test.

The person who has or is suspected of having COVID-19 must be off school or work for at least 10 days from the onset of symptoms or from the date of the positive test (whichever occurs first).

**24
HOURS**

At least 24 hours fever free

The person must be fever free for at least 24 hours without the use of fever-reducing medications, such as aspirin or Tylenol.

**24
HOURS**

Overall improvement in symptoms

The person's symptoms must be improving overall for at least 24 hours, but do not need to be completely resolved before returning to school or work. (Please Note: Some symptoms, such as loss of taste and smell, may take several months to return to normal and should not prevent a person from returning to work if they meet the other criteria.)

Schools and employers should not require students or staff to provide a negative coronavirus test result or a note from a healthcare provider before returning to school or work.



Quarantine

If a student or staff member is identified as a close contact to a positive or suspected case of COVID-19, they will be placed on a quarantine.

14 day quarantine

The person who has been in close contact with a positive or suspected case will be contacted by the Erie County Health Department and notified that they are on quarantine. They will be required to stay home for at least 14 days from their last contact with the sick person.

Symptom monitoring

The quarantined person will monitor themselves for symptoms and report to the Erie County Health Department daily.

Release from quarantine

If the person does not develop symptoms of COVID-19 during their quarantine period, they will receive a letter releasing them from quarantine. If they do develop symptoms, they will coordinate with the health department and their primary care provider for testing.

Schools and employers should not require students or staff to provide a negative coronavirus test result or a note from a healthcare provider before returning to school or work.