

**STEBENVILLE CITY SCHOOLS
HIGH SCHOOL ENTRY / CLASSROOM RENOVATION****TO: ALL BIDDERS**

This Addendum becomes a part of the Contract Documents and modifies the original Bidding Documents. The Bidder shall acknowledge receipt of this Addendum on the Form of Proposal. Failure to do so may subject the Bidder to disqualification.

CHANGES TO PRIOR ADDENDA:

1. None.

CHANGES TO DRAWINGS:

1. Drawing M1-2
 - a. Modified VAV box sizes.
 - b. Added transfer air opening.
 - c. Added return boots to return grilles.
 - d. Add acoustical lining to SA / RA off RTU.
 - e. Added elbow to corridor return.
 - f. Modified duct routing and sizes
2. Drawing M5-6
 - a. Updated VAV box schedule
 - b. Updated RTU schedule
3. Drawing E3-2
 - a. Modified disconnect fuse size.

END OF ADDENDUM TWO

G	8/23/22	CONFORMED DOCUMENTS
H	3/15/24	CLASSROOM RENOVATION
I	3/25/24	ADDENDUM 1

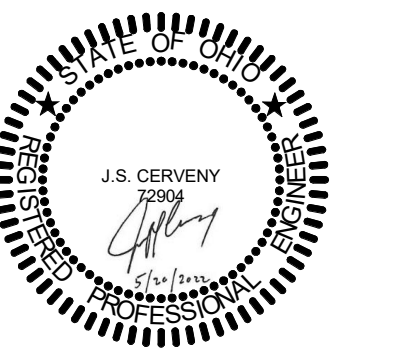


STUEBENVILLE CITY SCHOOLS

STUEBENVILLE HIGH SCHOOL STEM BUILDING



275 Springside Dr., Suite 300
Akron, Ohio 44333
Phone: 330-666-3702
ptaengineering.com



Union Point
190 N. Union Street
Suite 400
Akron, Ohio 44304
(330) 434-4464
(330) 434-8546 Fax
www.hasenstabinc.com

PROJECT NO.
21042.000

2ND FLOOR - DUCTWORK PLAN

SCALE 1/8" = 1'-0"

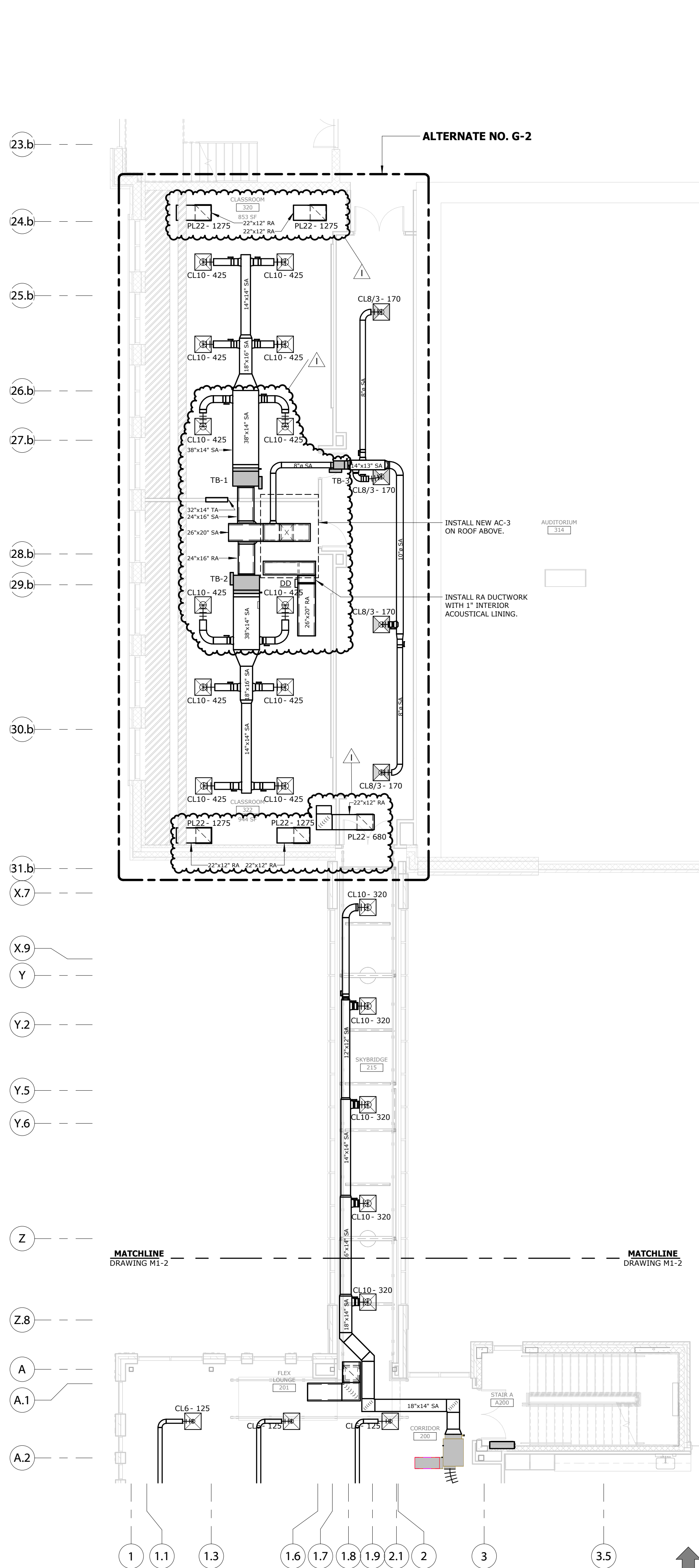
M1-2

DRAWING INTERPRETATION NOTES:

- EXISTING LINETYPE: THIN (LIGHT) SOLID LINES REPRESENT ITEMS THAT ARE EXISTING TO REMAIN OR ARE FURNISHED BY OTHERS.
- NEW LINETYPE: THICK (DARK) SOLID LINES REPRESENT ITEMS THAT ARE NEW OR RELOCATED.
- RELEVANT EXISTING CONDITIONS SHOWN ARE BASED ON RECORD DRAWINGS AND FIELD OBSERVATION(S). NOT ALL EXISTING ITEMS ARE SHOWN, OR COULD BE FIELD VERIFIED. ONCE AREAS OBSCURED FROM VIEW ARE EXPOSED, VERIFY THAT CONDITIONS ARE AS INDICATED ON THIS DRAWING. BEFORE PROCEEDING WITH WORK, NOTIFY THE ENGINEER IF CONDITIONS DIFFER FROM WHAT IS SHOWN.
- EQUIPMENT SHOWN GRAY-SHADED OR TAGGED HAVE AN ASSOCIATED EQUIPMENT SCHEDULE. SEE SCHEDULE SHEET(S).

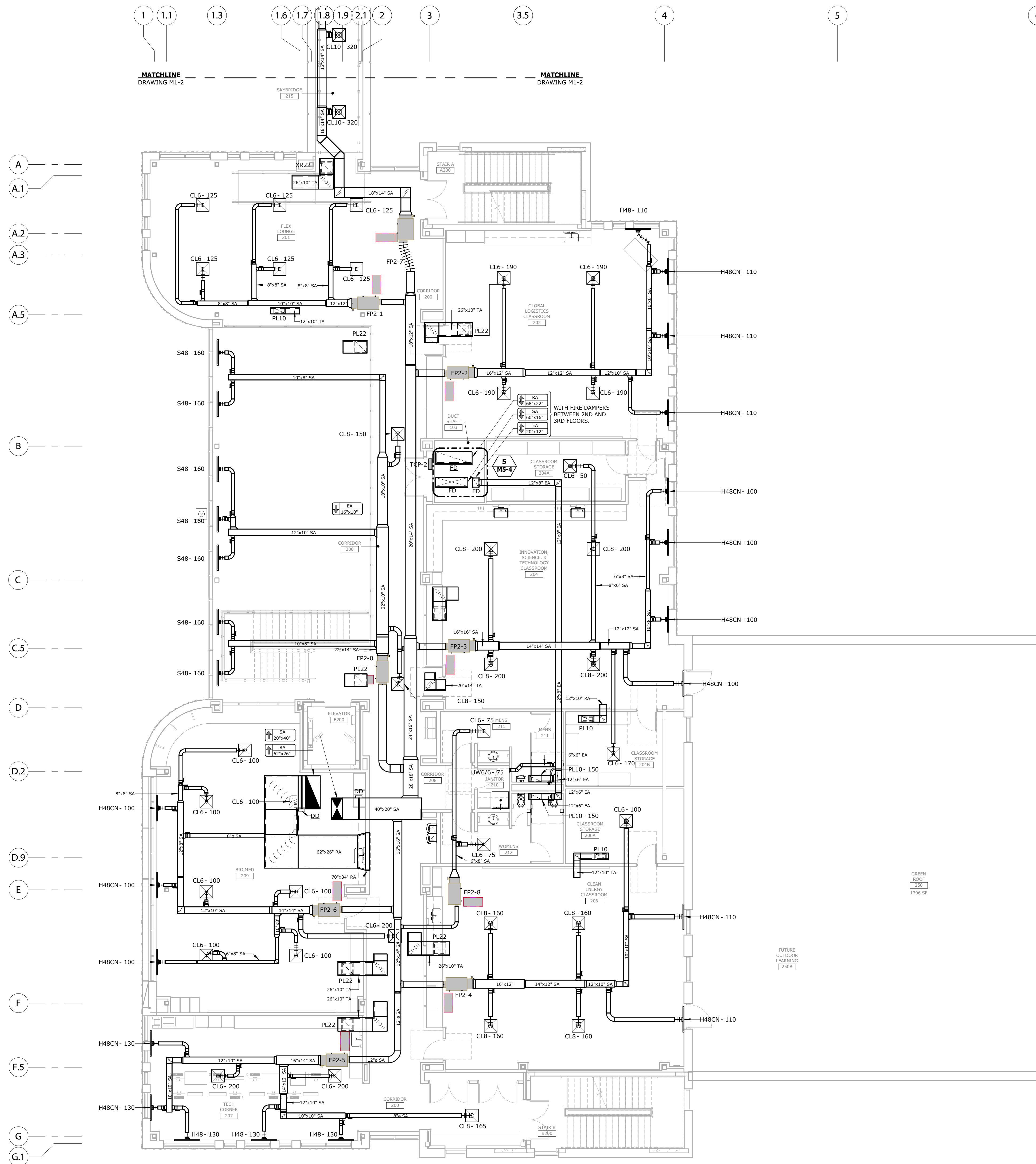
DUCTWORK NEW WORK NOTES:

- BRANCH DUCTWORK RUNOUTS TO GRILLES/DIFFUSERS SHALL BE THE NECK SIZE OF THE GRILLE/DIFFUSER, UNLESS NOTED OTHERWISE.
- BRANCH DUCTWORK RUNOUTS TO TERMINAL BOXES SHALL BE THE TERMINAL BOX INLET SIZE, UNLESS NOTED OTHERWISE.
- DUCT SIZES NOTED REPRESENT THE ACTUAL SHEET METAL SIZE. WHERE INTERIOR DUCT LINING IS USED, DUCT SIZES HAVE ALREADY ACCOUNTED FOR THE LINING.
- DO NOT INSTALL ANY DUCTWORK BENEATH OR ADJACENT TO ANY EQUIPMENT THAT WOULD HINDER MAINTENANCE ACCESS TO EQUIPMENT OR THE FUTURE REMOVAL OF EQUIPMENT.



2ND FLOOR & SKYWAY DUCTWORK PLAN

SCALE: 1/8" = 1'-0"



2ND FLOOR - DUCTWORK PLAN

SCALE: 1/8" = 1'-0"

G	8/23/22	CONFORMED DOCUMENTS
25	7/28/23	RFI-068
H	3/15/24	CLASSROOM RENOVATION
I	3/25/24	Addendum 1



STEUBENVILLE CITY SCHOOLS

STEUBENVILLE HIGH SCHOOL STEM BUILDING



275 Springside Dr., Suite 300
Akron, Ohio 44333
Phone: 330-666-3702
ptaengineering.com



Union Point
190 N. Union Street
Suite 400
Akron, Ohio 44304
(330) 434-4464
(330) 434-8546 Fax
www.hasenstabinc.com

PROJECT NO.
21042.000

SECOND FLOOR - EQUIPMENT WIRING

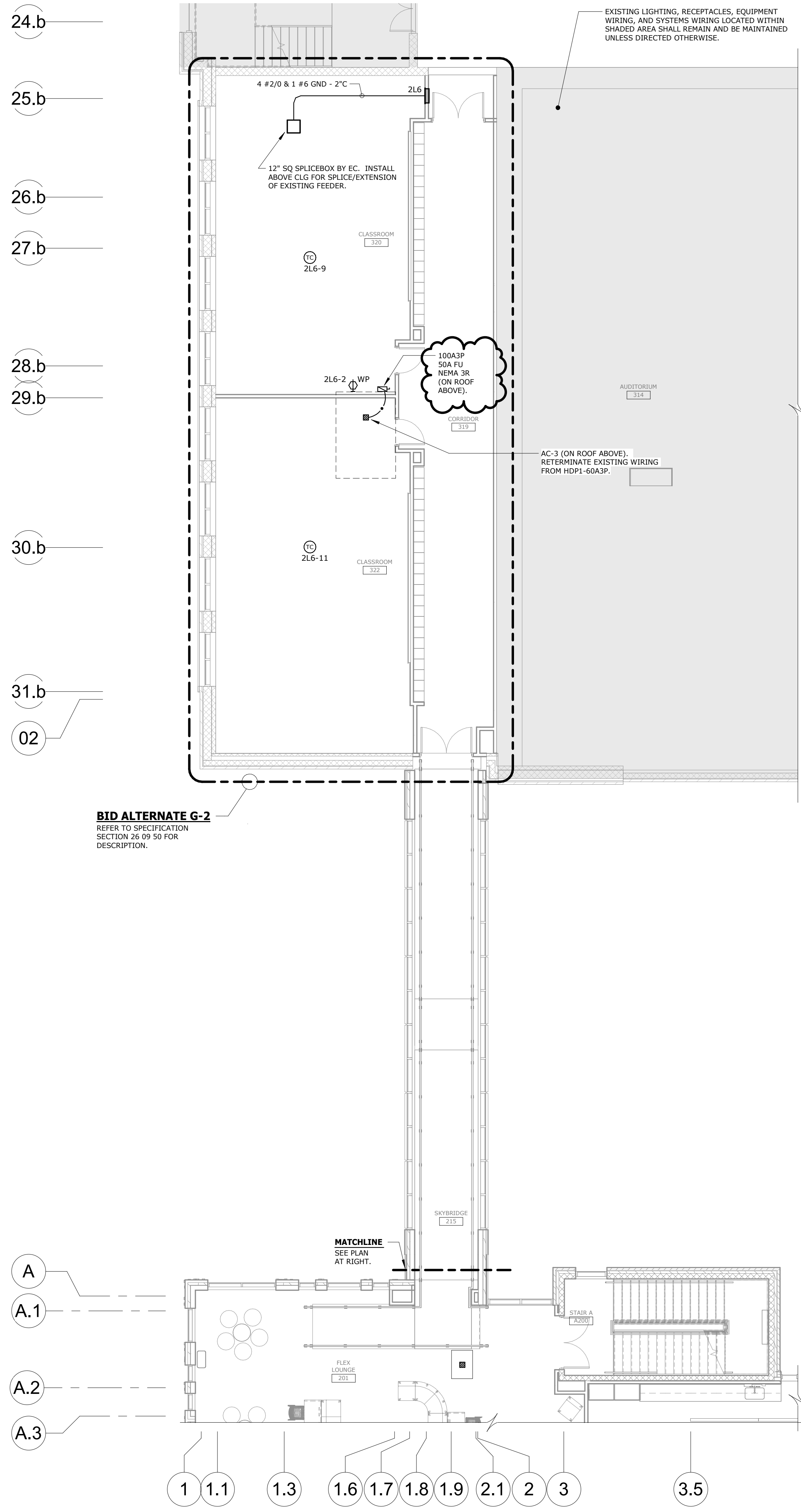
SCALE
As indicated

E3-2

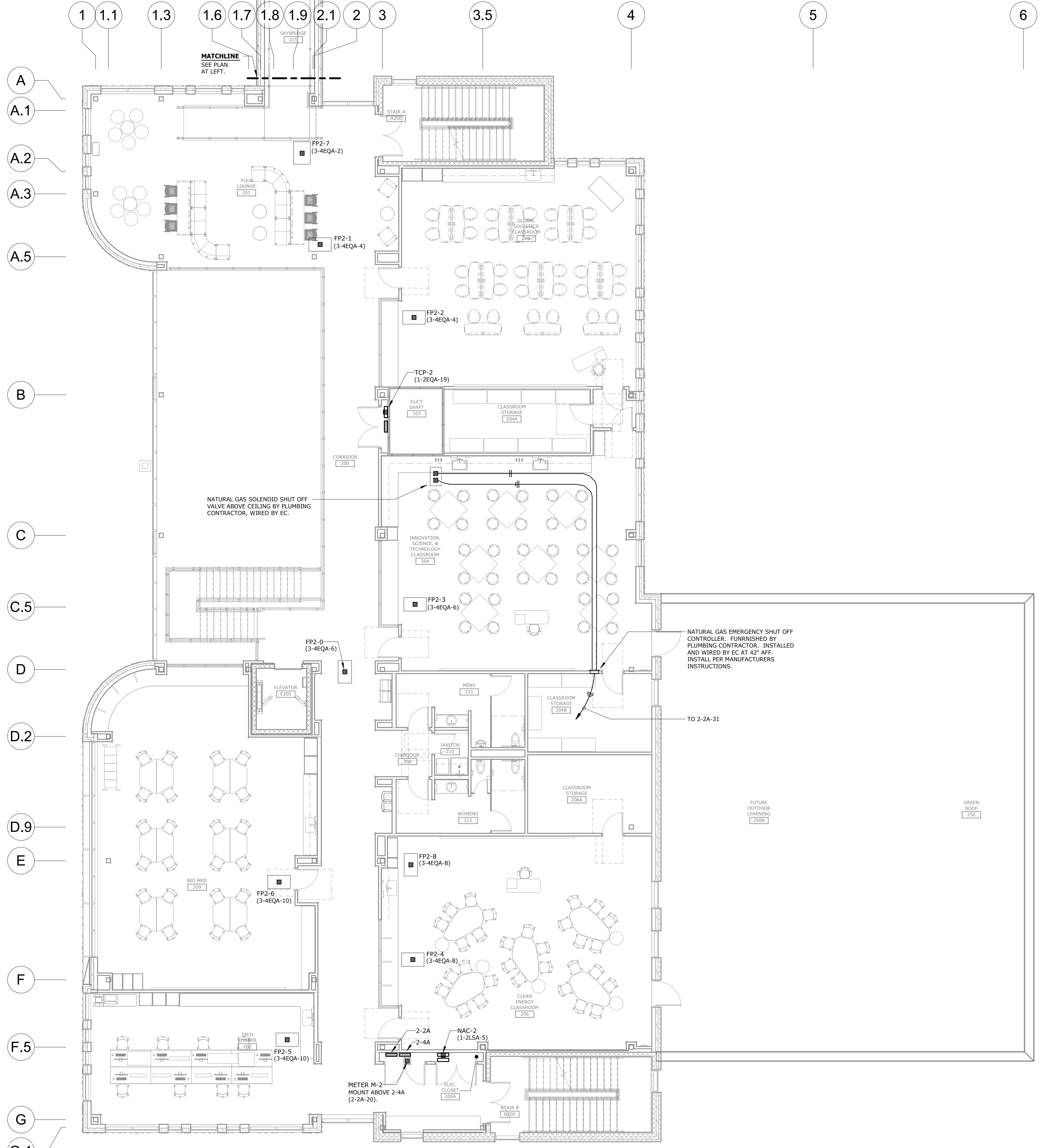
MECHANICAL EQUIPMENT SCHEDULE (FURNISHED AND SET BY MECHANICAL TRADES, WIRED BY ELECTRICAL TRADES)			
ITEM	DESCRIPTION	LOAD	REMARKS
AC-3	ROOF TOP A/C UNIT	480V / 3Ø / 33 MCA	45A MOCIP. FURNISHED & INSTALLED ONLY UNDER BID. ALTERNATE G-2.
FP2-0	FAN POWERED VAV BOX	277V / 1Ø / 2.4 FLA (15A MOCIP)	FURNISHED WITH INTEGRAL STARTER AND DISCONNECT.
FP2-1	FAN POWERED VAV BOX	277V / 1Ø / 1.6 FLA (15A MOCIP)	FURNISHED WITH INTEGRAL STARTER AND DISCONNECT.
FP2-2	FAN POWERED VAV BOX	277V / 1Ø / 1.6 FLA (15A MOCIP)	FURNISHED WITH INTEGRAL STARTER AND DISCONNECT.
FP2-3	FAN POWERED VAV BOX	277V / 1Ø / 1.6 FLA (15A MOCIP)	FURNISHED WITH INTEGRAL STARTER AND DISCONNECT.
FP2-4	FAN POWERED VAV BOX	277V / 1Ø / 1.6 FLA (15A MOCIP)	FURNISHED WITH INTEGRAL STARTER AND DISCONNECT.
FP2-5	FAN POWERED VAV BOX	277V / 1Ø / 3.8 FLA (15A MOCIP)	FURNISHED WITH INTEGRAL STARTER AND DISCONNECT.
FP2-6	FAN POWERED VAV BOX	277V / 1Ø / 1.6 FLA (15A MOCIP)	FURNISHED WITH INTEGRAL STARTER AND DISCONNECT.
FP2-7	FAN POWERED VAV BOX	277V / 1Ø / 3.8 FLA (15A MOCIP)	FURNISHED WITH INTEGRAL STARTER AND DISCONNECT.
FP2-8	FAN POWERED VAV BOX	277V / 1Ø / 0.7 FLA (15A MOCIP)	FURNISHED WITH INTEGRAL STARTER AND DISCONNECT.

NOTES:

- BRANCH CIRCUIT CONDUCTOR SIZES SHALL MINIMALLY BE #12 AWG. WHERE THE LENGTH OF A HOMERUN, FROM PANEL TO FIRST DEVICE, EXCEEDS 75 FEET FOR A 120 VOLT CIRCUIT OR 175 FEET FOR A 277 VOLT CIRCUIT, THE MINIMUM CONDUCTOR SIZE SHALL BE #10 AWG.
- MC TYPE CABLE MAY BE USED FOR BRANCH CIRCUIT WIRING CONCEALED ABOVE CEILINGS AND IN STUD WALLS. ALL BRANCH CIRCUIT HOMERUNS SHALL BE INSTALLED IN CONDUIT. ALL BRANCH CIRCUIT WIRING INSTALLED EXPOSED IN FINISHED SPACES SHALL BE IN CONDUIT.
- CONDUIT SHALL BE RAN CONCEALED ABOVE CEILINGS AND IN WALLS AS MUCH AS POSSIBLE. FURNISH AND INSTALL QUANTITY AND SIZE OF WIRES REQUIRED BY CIRCUIT INDICATED IN PARENTHESES. INSTALL A GREEN INSULATED COPPER GROUND CONDUCTOR SIZED IN ACCORDANCE WITH NEC TABLE 250-122.
- ROOF MOUNTED MECHANICAL EQUIPMENT SHALL BE FED FROM BELOW. ALL FEEDERS SHALL PENETRATE ROOF BELOW UNIT, THROUGH COMMON PIPE CURBS. EC TO COORDINATE WITH MECHANICAL TRADES.



EXISTING THIRD FLOOR & SKYBRIDGE - EQUIPMENT WIRING
SCALE: 1/8" = 1'-0"



SECOND FLOOR - EQUIPMENT WIRING
SCALE: 1/8" = 1'-0"

