

# Brentwood Borough School District

## New Elementary School



Construction Update  
January 27, 2024



**HHS DR**  
ARCHITECTS  
ENGINEERS



 **Massaro**  
CM SERVICES, LLC

# Digging Footers at Area C



**HHS DR**  
ARCHITECTS  
ENGINEERS



 **Massaro**  
CM SERVICES, LLC



# Forming and Rebar for Footer at Area C



**HHS DR**  
ARCHITECTS  
ENGINEERS



 **Massaro**  
CM SERVICES, LLC



# Pouring Footer at Area C



**HHS DR**  
ARCHITECTS  
ENGINEERS



 **Massaro**  
CM SERVICES, LLC



# Forming Concrete Foundation Walls



**HHS DR**  
ARCHITECTS  
ENGINEERS



 **Massaro**  
CM SERVICES, LLC



# Ready to Pour Foundation Walls



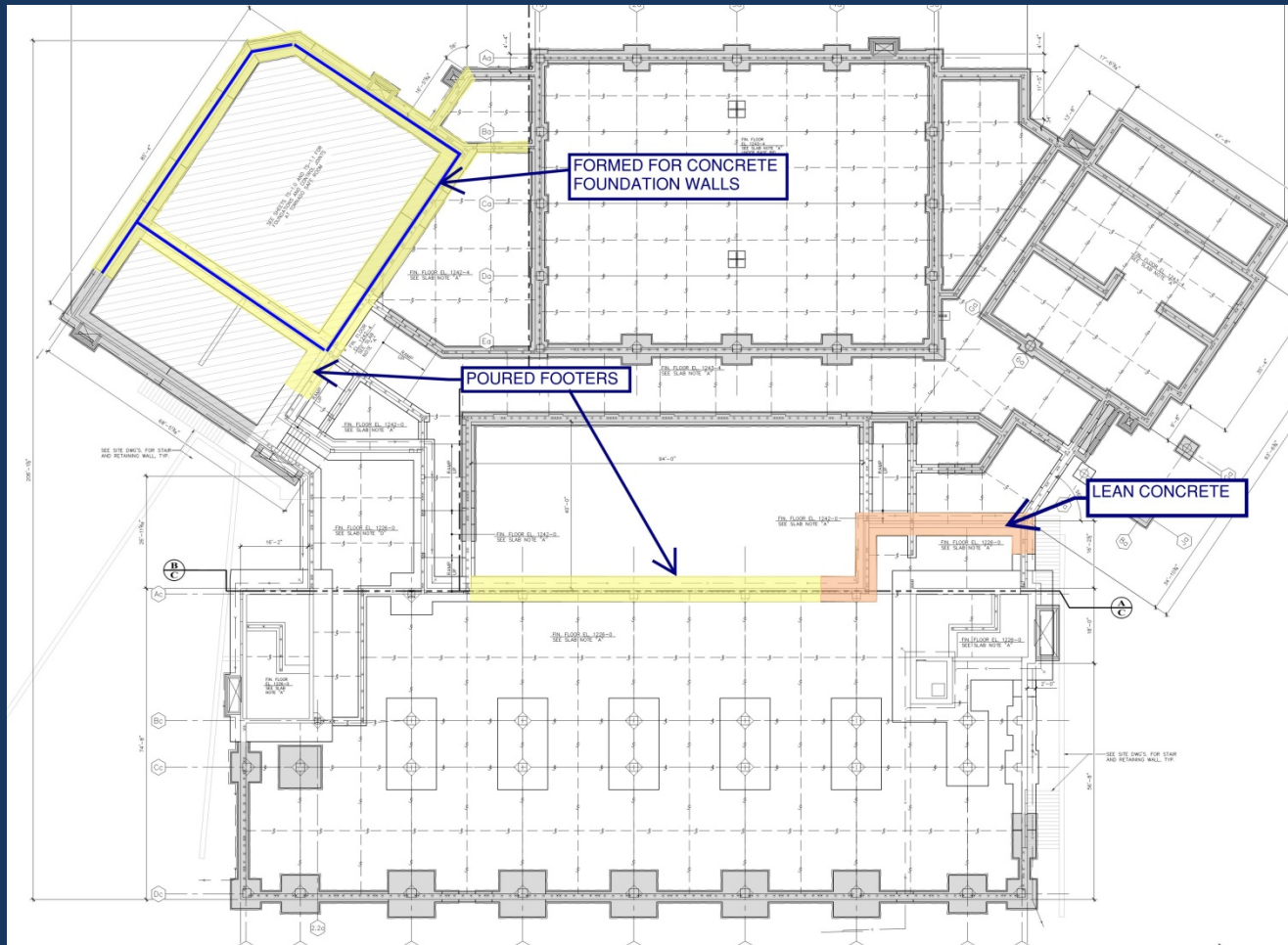
**HHS DR**  
ARCHITECTS  
ENGINEERS



 **Massaro**  
CM SERVICES, LLC



# Pouring Lean Concrete & Foundations



**HHS DR**  
ARCHITECTS  
ENGINEERS



**Massaro**  
CM SERVICES, LLC

# Drilling Soldier Piles for Retaining Walls



**HHS DR**  
ARCHITECTS  
ENGINEERS



 **Massaro**  
CM SERVICES, LLC



# Drilling Soldier Piles for Retaining Walls



**HHS DR**  
ARCHITECTS  
ENGINEERS



 **Massaro**  
CM SERVICES, LLC



# Drilling Soldier Piles for Retaining Walls



**HHSDR**  
ARCHITECTS  
ENGINEERS



**Massaro**  
CM SERVICES, LLC



# Drilling Soldier Piles for Retaining Walls



**HHS DR**  
ARCHITECTS  
ENGINEERS



 **Massaro**  
CM SERVICES, LLC

**HHS DR**  
ARCHITECTS  
ENGINEERS





# Final Tree Removal along Olancho Ave.



**HHS DR**  
ARCHITECTS  
ENGINEERS



 **Massaro**  
CM SERVICES, LLC

# Baseline Schedule Sign Off & First Update

Act ID

Activity Description

Orig Dur

Rem Dur

Early Start

Early Finish

Total Float

%

Resp.

Actual Start

Actual Finish

Predecessors

Successors

New Brentwood Elementary School

Milestones

MS1000

Notice to Proceed

0

0

07OCT24 A

100

GC

07OCT24

MS1002

Project Start

0

0

07OCT24 A

100

GC

07OCT24

IS1000

MS1004

Building Pad Established

0

0

04AUG25

27d

0

GC

BS1010,

MS1006

Steel Erection Complete

0

0

17NOV25

195d

0

GC

AS1014

MS1008

Full Building Enclosure

0

0

16JAN26

150d

0

GC

AS1024

MS1010

Commissioning

0

0

26JUN26

35d

0

GC

AF2026,

MS1012

Substantial Completion

0

0

14AUG26

0

0

GC

AF1026,

MS1014

MS1014

Project Completion

0

0

14AUG26

0

0

GC

MS1012

◆ Notice to Proceed

◆ Project Start

◆ Building Pad Established

◆ Steel Erection Complete

◆ Full Building Enclosure

◆ Commissioning

◆ Substantial Completion

◆ Project Completion

Initial Sitework

IS1000

Mobilize

5d

0

07OCT24 A

11OCT24 A

100

GC

07OCT24

11OCT24

MS1002

IS1002

IS1002

Layout

5d

0

07OCT24 A

11OCT24 A

100

GC

07OCT24

11OCT24

IS1000

IS1004

IS1004

Temporary Fence

5d

0

07OCT24 A

11OCT24 A

100

GC

07OCT24

11OCT24

IS1002

IS1006

IS1006

Install E&S Controls

5d

0

14OCT24 A

18OCT24 A

100

GC

14OCT24

18OCT24

IS1004

IS1008

IS1008

Tree Removal

5d

0

21OCT24 A

10JAN25 A

100

GC

21OCT24

10JAN25

IS1006

IS1010

IS1010

Site Demolition

5d

24h

21OCT24 A

21JAN25

58d

50

GC

21OCT24

10JAN25

IS1008

IS1012

IS1012

Excavate Area B & C to Subgrade

25d

5d

21OCT24 A

23JAN25

58d

80

GC

21OCT24

IS1010

IS1014

IS1014

Excavation for Soldier Pile Wall Drilling

10d

0

25NOV24 A

13DEC24 A

100

GC

25NOV24

13DEC24

IS1012

IS1016

IS1016

Site Wall D Drilling & Setting of Piles

15d

0

19DEC24 A

07JAN25 A

100

GC

19DEC24

07JAN25

IS1014

IS1018

IS1018

Site Wall A-C Drilling & Setting of Piles

25d

10d

08JAN25 A

06FEB25

58d

60

GC

08JAN25

IS1016

IS1022

IS1020

Site Wall D Set Lagging

15d

15d

24JAN25

13FEB25

104d

0

GC

IS1016

IS1022

IS1024

Wall D Backfill and French Drains

15d

15d

31JAN25

20FEB25

255d

0

GC

IS1020

IS1028

IS4000

Secondary Service

20d

20d

07FEB25

06MAR25

58d

0

EC

IS1018

IS4002

IS1022

Site Wall A-C Set Lagging

20d

20d

14FEB25

13MAR25

104d

0

GC

IS1018, IS1020

IS1028

IS1028

Wall A-C Backfill and French Drains

20d

20d

21FEB25

20MAR25

104d

0

GC

IS1022

IS1030

IS1029

Wall D South Concrete Wall Extension

10d

10d

21FEB25

06MAR25

255d

0

GC

IS1024

IS1032

IS3000

Site Sanitary

5d

5d

07MAR25 \*

13MAR25

361d

0

PC

IS1022

IS3002

IS4002

Primary Service

5d

5d

07MAR25

13MAR25

58d

0

EC

IS4000

IS4004

IS3002

Site Water

4d

4d

14MAR25

19MAR25

361d

0

PC

IS3000

IS3004

IS4004

T/C Service

8d

8d

14MAR25

20MAR25

58d

0

EC

IS4002

CS1014

IS3004

Site Gas

3d

3d

20MAR25

24MAR25

361d

0

PC

IS3002

IS3006

IS1030

Transformer Area Concrete Wall

10d

10d

21MAR25

03APR25

104d

0

GC

IS1020

IS1032

IS3006

Meter Vault

3d

3d

25MAR25

27MAR25

361d

0

PC

IS3004

IS1036

Storm Tank System

25d

25d

04APR25

08MAY25

104d

0

GC

IS1030

CG3006,

IS1038

Storm Line Into Courtyard

10d

10d

06MAY25

22MAY25

210d

0

GC

IS1036

IS1040

IS1040

Stormlines Upstream of Tank as Available

20d

20d

23MAY25

16JUN25

210d

0

GC

IS1038

FS1002

■ Mobilize

■ Layout

■ Temporary Fence

■ Install E&S Controls

■ Tree Removal

■ Site Demolition

■ Excavate Area B & C to Subgrade

■ Excavation for Soldier Pile Wall Drilling

■ Site Wall D Drilling & Setting of Piles

■ Site Wall A-C Drilling & Setting of Piles

■ Site Wall D Set Lagging

■ Wall D Backfill and French Drains

■ Secondary Service

■ Site Wall A-C Set Lagging

■ Wall A-C Backfill and French Drains

■ Wall D South Concrete Wall Extension

■ Site Sanitary

■ Primary Service

■ Site Water

■ T/C Service

■ Site Gas

■ Transformer Area Concrete Wall

■ Meter Vault

■ Storm Tank System

■ Storm Line Into Courtyard

■ Stormlines Upstream of Tank as Available

Area C Structure

CS1000

Foundation Installation

30d

30d

15JAN25 A

27FEB25

0

0

GC

15JAN25

BS1000,

CS1002

Concrete Wall East Half

25d

25d

20JAN25

04MAR25

0

0

GC

CS1000

CS1004,

CS1004

Stair 2 & Elevator Shaft

35d

35d

05MAR25

22APR25

18d

0

GC

CS1002

CS1012

CS1006

Concrete Wall West Half

25d

25d

05MAR25

08APR25

0

0

GC

CS1002

CG3000,

CG3000

Building Sanitary UG

10d

10d

20MAR25

08APR25

43d

0

PC

CS1006

CG3002

CS1007

Stair 1

25d

25d

07APR25

09MAY25

0

0

GC

CS1006

BS1004,

CG3002

Building Storm UG

5d

5d

06APR25

15APR25

43d

0

PC

CG3000

CS1014

CS1008

Fill Bit Concrete Wall & Site Walls B-C

10d

10d

06APR25

22APR25

18d

0

GC

CS1006

CS1012

CS1008

CMU to Finish Floor

5d

5d

28APR25

02MAY25

5d

0

GC

CS1007

CS1010

CS1010

Backfill to Ground Floor Subgrade

5d

5d

05MAY25

09MAY25

5d

0

GC

CS1008

CS1012

CS1012

Structural Steel Erection

30d

30d

16MAY25

27JUN25

0

0

GC

BS1004,

CS1014,

CS1014

Prep SOG

5d

5d

16JUN25

20JUN25

0

0

GC

CG3002,

CS1016,

CS4000

Underlab Feeders

10d

10d

16JUN25

27JUN25

5d

0

EC

CS1014

IS1016,

CS1016

Pour SOG

10d

10d

23JUN25

04JUL25

0

0

GC

CS1014,

CG3004,

CS1046

Structural Steel Detailing

25d

25d

23JUN25

25JUL25

0

0

GC

CS1012

CS1018

■ Foundation Installation

■ Concrete Wall East Half

■ Stair 2 & Elevator Shaft

■ Concrete Wall West Half

■ Building Sanitary UG

■ Stair 1

■ Building Storm UG

■ Fill Bit Concrete Wall & Site Walls B-C

■ CMU to Finish Floor

■ Backfill to Ground Floor Subgrade

■ Structural Steel Erection

■ Prep SOG

■ Underlab Feeders

■ Pour SOG

■ Structural Steel Detailing

Brentwood Elementary

11/25/24 09:05:47



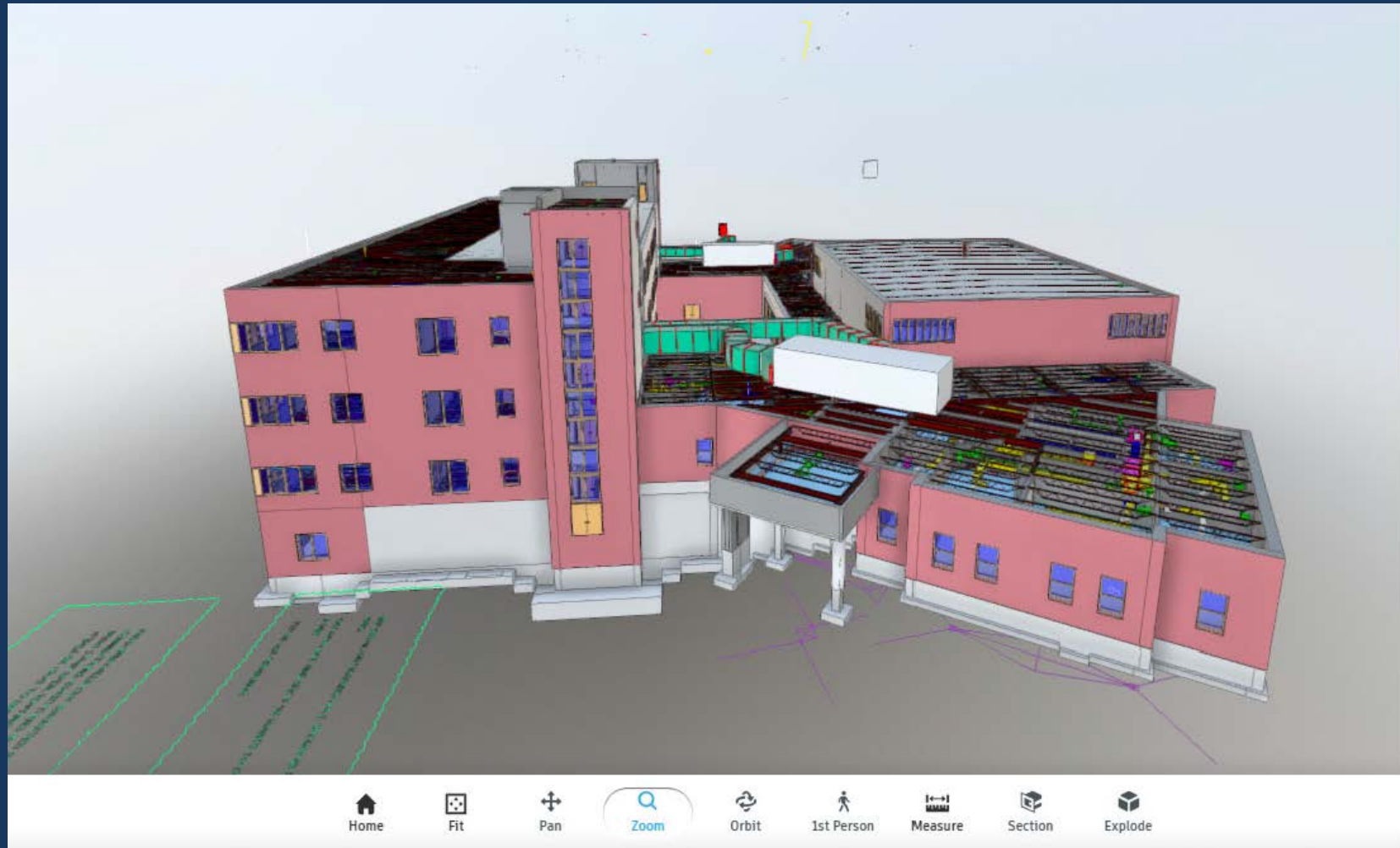
**HHS DR**  
ARCHITECTS  
ENGINEERS



**Massaro**  
CM SERVICES, LLC



# Coordination Using BIM Model



**HHS DR**  
ARCHITECTS  
ENGINEERS



**Massaro**  
CM SERVICES, LLC



# Overall Progress

## Upcoming Work:

- Temporary electric connection by Duquesne Light
- Continue forming and pouring foundations.
- Finish soldier wall installation.
- Installation of water meter vault and water service to site.
- Continue MEP Coordination

## Project Schedule

- Project is on schedule for substantial completion on August 14, 2026



## Project Stats:

- Project is at 72 days with no recordable injury



**HHS DR**  
ARCHITECTS  
ENGINEERS



**Massaro**  
CM SERVICES, LLC



# Questions



**HHS DR**  
ARCHITECTS  
ENGINEERS



 **Massaro**  
CM SERVICES, LLC