

# BRENTWOOD BOROUGH SCHOOL DISTRICT

## NEW ELEMENTARY SCHOOL MONTHLY PROJECT UPDATE



**HHS DR**  
ARCHITECTS  
ENGINEERS



**Massaro**  
CM SERVICES, LLC

# Progress in Areas A



- Foundations Complete
- Masonry in Progress – Mucci provided tenting to keep work going.



**HHS DR**  
ARCHITECTS  
ENGINEERS



**Massaro**  
CM SERVICES, LLC



# Progress in Area A - Gym



- Steel Erection & Detailing Complete
- Roof Decking Complete



**HHS DR**  
ARCHITECTS  
ENGINEERS



**Massaro**  
CM SERVICES, LLC



# Progress in Area B – Storm Shelter / Cafeteria



- Framing in Progress



**HHS DR**  
ARCHITECTS  
ENGINEERS



**Massaro**  
CM SERVICES, LLC



# Progress in Area B - Kitchen



**HHS DR**  
ARCHITECTS  
ENGINEERS



**Massaro**  
CM SERVICES, LLC



# Area B Ground Floor – Mechanical Rooms



**HHS DR**  
ARCHITECTS  
ENGINEERS



**Massaro**  
CM SERVICES, LLC



# Area B Ground Floor – Mechanical Rooms



**HHS DR**  
ARCHITECTS  
ENGINEERS



**Massaro**  
CM SERVICES, LLC



# Area C – Ground Floor – Insulation



**HHS DR**  
ARCHITECTS  
ENGINEERS



**Massaro**  
CM SERVICES, LLC



# Area B Ground Floor – Drywall



**HHS DR**  
ARCHITECTS  
ENGINEERS



**Massaro**  
CM SERVICES, LLC



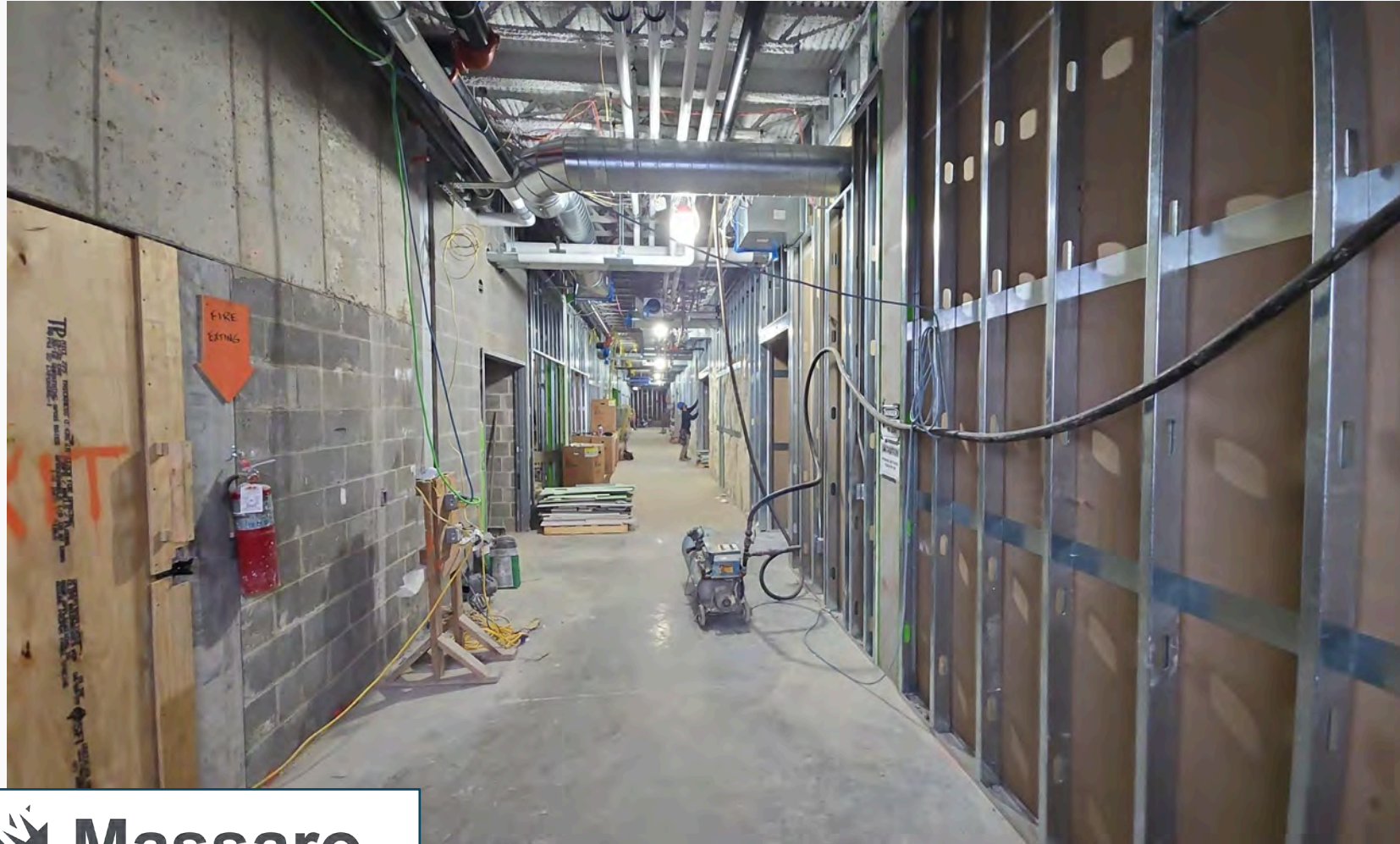
# Area C – Ground Floor – Overall Progress



Rough In Progress:

- Plumbing - 100%
- Fire Protection – 90%
- Mechanical – 100%
- Electrical – 100%

Drywall Progress – 30%



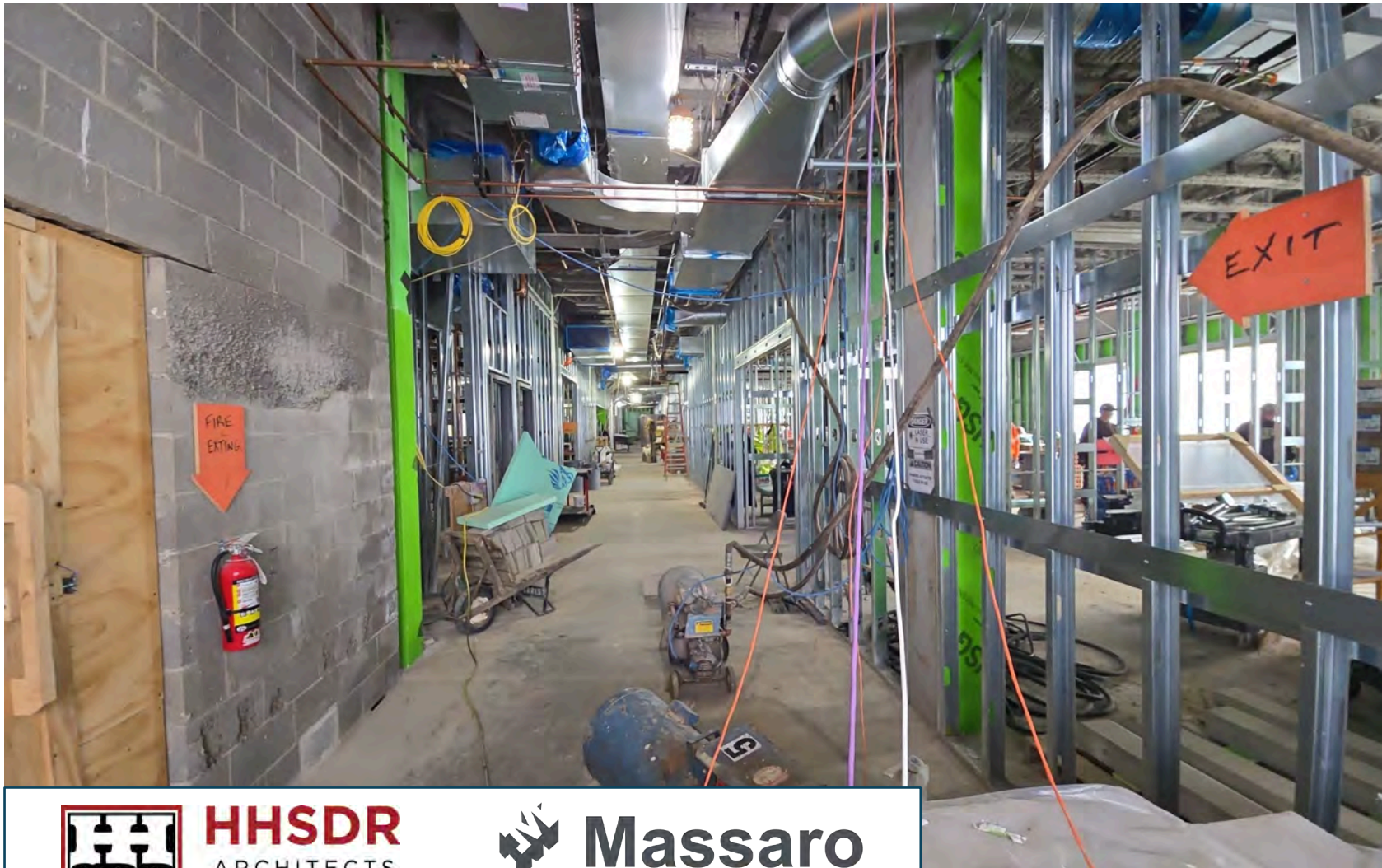
**HHSDR**  
ARCHITECTS  
ENGINEERS



**Massaro**  
CM SERVICES, LLC



# Area C – 1<sup>st</sup> Floor – Overall Progress



Rough In Progress:

- Plumbing - 100%
- Fire Protection – 80%
- Mechanical – 95%
- Electrical – 80%



**HHSDR**  
ARCHITECTS  
ENGINEERS



**Massaro**  
CM SERVICES, LLC



# Area C – 2<sup>nd</sup> Floor – Overall Progress



Rough In Progress:

- Plumbing - 60%
- Mechanical – 95%
- Electrical – 60%



**HHS DR**  
ARCHITECTS  
ENGINEERS



**Massaro**  
CM SERVICES, LLC

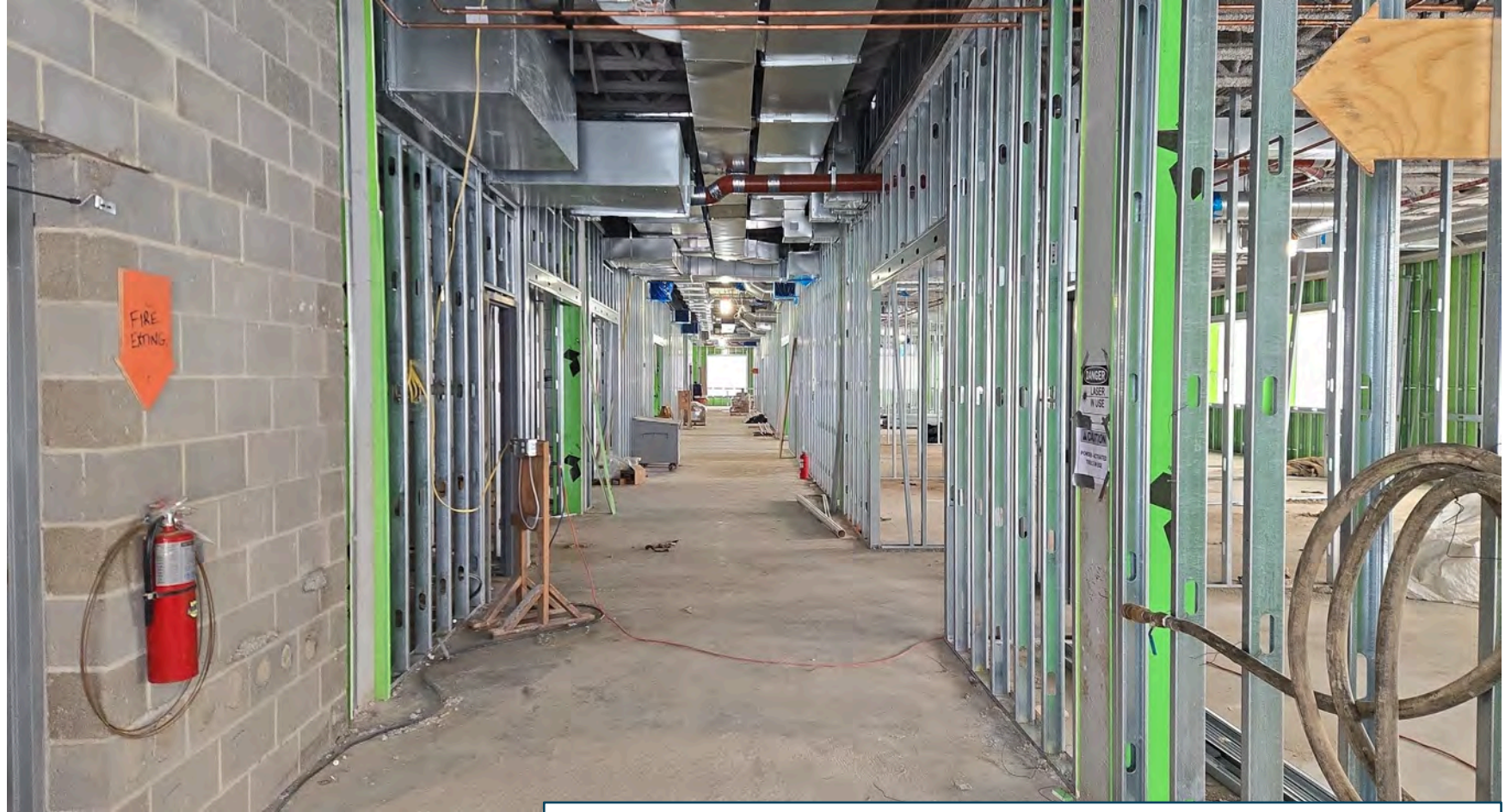


# Area C – 3<sup>rd</sup> Floor – Overall Progress



Rough In Progress:

- Plumbing - 50%
- Mechanical – 75%
- Electrical – 25%



**HHS DR**  
ARCHITECTS  
ENGINEERS



**Massaro**  
CM SERVICES, LLC



# OVERALL PROGRESS



## Upcoming Work:

- Continue Mechanical, Electrical, and Plumbing Rough In at Area C
- Continue Drywall in Area C – Moving to 1<sup>st</sup> Floor Next Week
- Complete roofing at Area C
- Window installation at Area C
- Complete Area B framing
- Area B rough ins
- Continue block and brick installation

## Project Schedule

- The current schedule update from Mucci shows the project completing on time; however, there continue to be concerns with the weather, masonry and roofing.



## Project Stats:

- Project is at 52 day with no recordable injury



**HHSDR**  
ARCHITECTS  
ENGINEERS



**Massaro**  
CM SERVICES, LLC



**THANK YOU!**

QUESTIONS?

