

ADDENDUM #3
2021 ENTRANCE REPLACEMENT
UNION CITY AREA SCHOOL DISTRICT
SPECIFICATION FOR DOOR REPLACEMENT
APRIL 13, 2021

1. New bid opening scheduled for May 3, 2021 @ 1:00p.m.
2. Bids received by May 3rd will be subject to School Board approval on May 13, 2021.
3. Updated holding price timeline - 15 days (previous holding price timeline was 60 days)
4. 4.5 inch framing systems (same materials) will be accepted as alternative bids
5. New Specs included in this addendum (see below).
6. New bid price sheet (see below).

UNION CITY ELEMENTARY SCHOOL ENTRANCE REPLACEMENT PROJECT

BASIS OF DESIGN SPECIFICATION & SCOPE OF WORK

Updated March 31, 2021

SCOPE OF WORK

1. Remove & dispose of existing aluminum storefront & hollow metal entrances in their entirety
2. Fabricate & install new aluminum storefront entrances to fit existing openings including specified hardware, glazing & miscellaneous / accessory trim components as necessary
3. Entrances See attached

GENERAL REQUIREMENTS

1. PREVAILING WAGE REQUIREMENTS

- a. All trades shall incorporate and adhere to current Pennsylvania Prevailing Wage requirements.

2. CLEARANCES

- a. Prior to commencement of any work the following Clearances shall be submitted for all employees / workmen performing work on School District property.

- i. Pennsylvania State Police Criminal History Report
- ii. Pennsylvania Department of Human Services Child Abuse Report
- iii. Federal Criminal History Report
- iv. PDE 6004 Form – Arrest / conviction Report and Certification Form
- v. Sexual Misconduct / Abuse Disclosure Release Form pursuant to Act 168 of 2014
(see Section 111.1 of the Pennsylvania Public School Code of 1949, as amended)

3. OTHER

- a. Interior ceiling grid - District will replace ceiling tile only. Any ceiling tile grid damage is the responsibility of the contractor.
- b. Floor around and under door will be clear of any tripping hazards and remain ADA compliant
- c. Walls disturbed while installing frame/doors will be repaired by contractor and be paint/tile ready.
- d. Interior doors are to match existing interior door material and color.

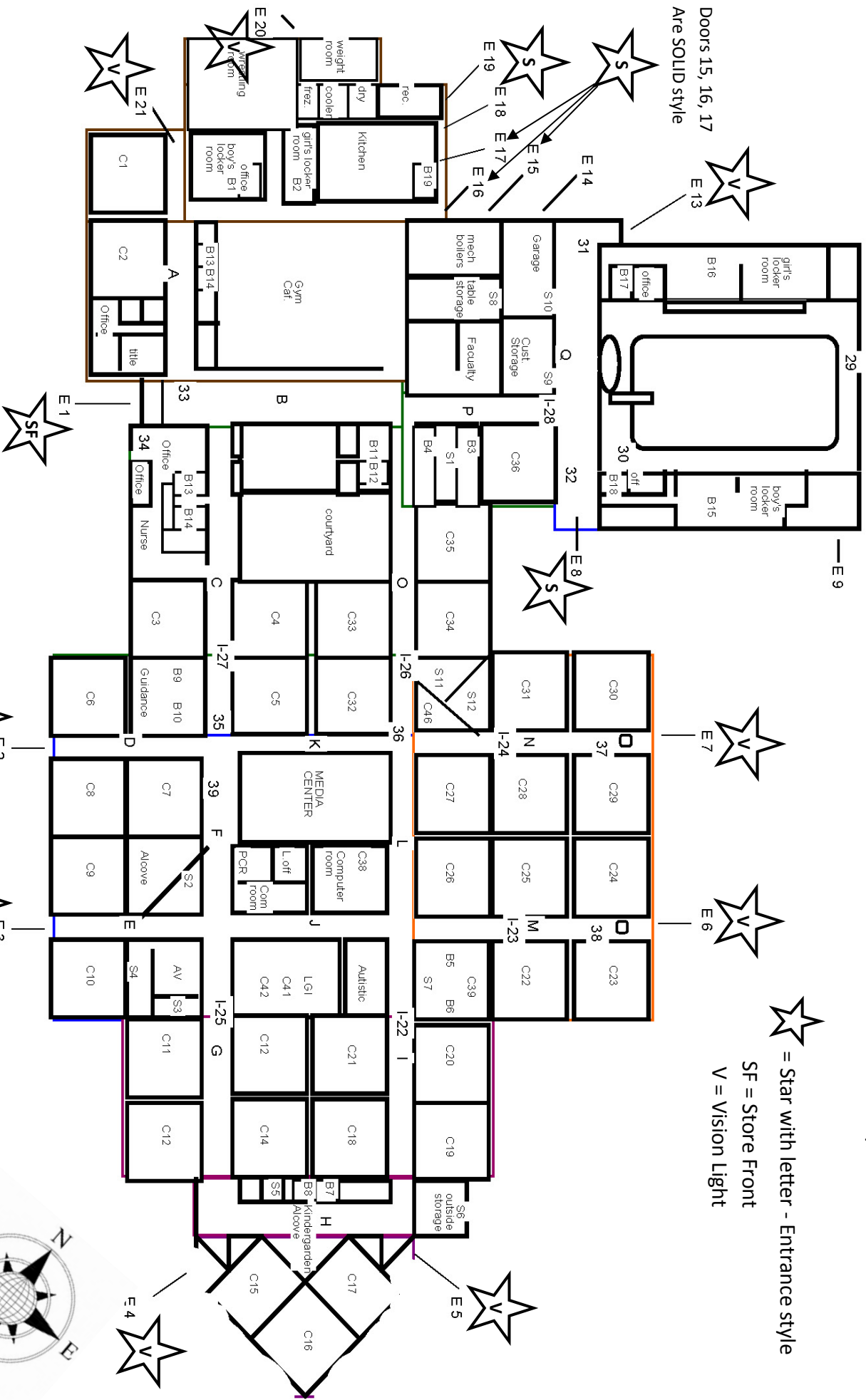
Union City Area School District Elementary Door Plan

Legend:

E - Letter "E" with Number Indicates
Exterior Entry/Exit door

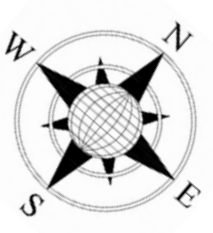
☆ = Star with letter - Entrance style
SF = Store Front
V = Vision Light

Doors 15, 16, 17
Are SOLID style



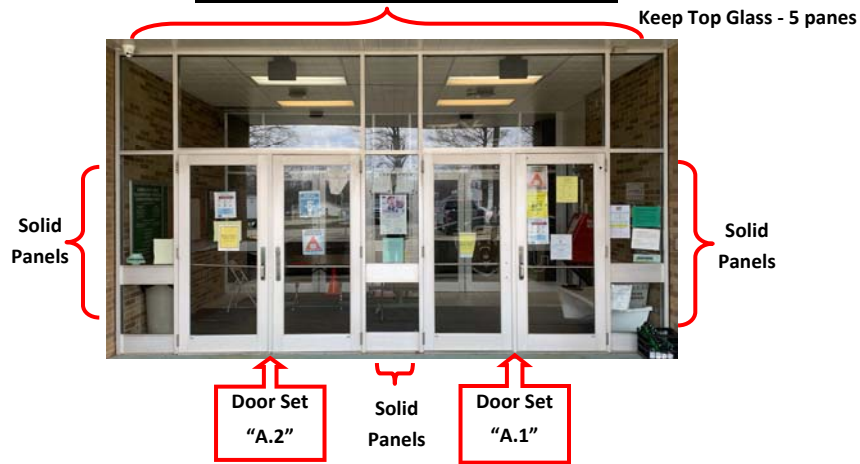
Door Viewers

a. (1) each installed in active leaf of Entrances #8, 10, 11, 15, 16, 17 & 20



Door 1A = Exterior Doors & Frame

Entrance style = SF - Store Front



Door Specifications :

1. Aluminum Storefront Entrance (1A.1+(A-2)
 - a. Framing: Tubelite 24650 Series 2"x 61/2" Flush Glaze or Equal
 - I. Base: 10"
 - II. Horizontal Mid-Rail: 6"
 - III. Glazing: 1"
 - b. Doors: Tubelite (WS) Wide Stile or Equal
 - I. Thickness: 1 3/4" Non-Thermal
 - II. Bottom Rail: 10"
 - III. Glazing: 1"
 - c. Finish: Manufacturer Standard Dark Bronze Anodized
 - d. Warranty: Manufacturer Standard but not less than 2 years
2. Glazing
 - a. Insulated Glass
 - I. 1" Overall Thickness (Entrance #1)
 1. 1/4" Clear Tempered Outboard Lite
 2. SB60 #2 Surface
 3. Mill Spacer
 4. 1/4" Clear Tempered Inboard Lite
 - II. 1/2" Overall Thickness (Vision Lites)
 1. 1/2" Clear Tempered Outboard Lite
 2. Mill Spacer
 - b. Insulated Architectural Panel (All Entrance Doors, Sidelights & Transoms U.N.O)
 - I. 1" embossed aluminum adhered to solid phenolic panel both sides
 - II. EPS core
 - III. Factory applied finish to match storefront framing
 - c. Warranty: Manufacturer Standard
3. Vision Lites
 - a. (2) each Entrances #2-7, 13 & 21
 - b. NGP L-GLF-100 SP or Equal
 - c. 8" x 34"
 - d. Warranty: Manufacturer Standard
4. Door Viewers
 - a. (1) each installed in active leaf of Entrances #8, 10,11,15,16,17&20
 - b. IVES 190 Degree or equal
5. Security Film
 - a. Applied to the interior surface of all glass lites
 - b. 3M Scotchshield & Security Film Ultra S800 w/3M Impact Protection Profile Attachment
6. Aluminum Door Hardware
 - a. Provide, prep & apply door hardware in accordance with attached Opening List/Hardware Sets
 - b. No Substitutions
 - c. Warranty : Manufacturer(s) Standard
7. Sealants
 - a. Interior & Exterior single and/or multi-component commercial grade sealants compatible with /suitable for the surrounding substrates and finishes
 - b. Backer materials as required
 - c. Color: Bronze to match aluminum finish
8. Submittals
 - a. Provide for owners review & approval (1) copy, (electronic where applicable) including but not limited to Manufacturer product & performance data, product cut sheets and samples.

Hardware for Door 1 on next page

Door 1A = Exterior Doors & Frame

Door Hardware Specifications For Door A.1 and A.2

Doors: A.1

Hardware Set 2

2 Continuous Hinge	112HD 83" EPT TEK	US28	IV
1 Removable Mullion	L980S 96	PC	SA
1 Exit Device	16 56 LC 8804 F LESS TRIM CPC	32D	SA
1 Exit Device	16 55 LC 8810 F CPC	32D	SA
1 Rim Cylinder Housing	20-079	626	SC
3 Cylinder Housing	26-094	626	SC
4 Cylinder Core	23-030 1-Bitted E KEYWAY (Cut-KEY, Pin-IC-CORE, Pin-KEY-SYS, Stp-DND, Stp-VKC)	626	SC
2 Door Closer	SC71A RW/PA SC70-61	689	FL
2 Mounting Plate	SC70-18PA	689	FL
2 Overhead Door Stop	104S	US32D	GL
1 Door Pull	8190HD-18 TYPE O MTG.	US32D	IV
1 Mullion Gasketing	5110 BL 120"		PE
2 Door Bottom Sweep	3452 CNB 36"		PE
1 Threshold	273 X 224 AFGT 72" MSES25SS		PE
1 Piezo	PZ1	US32D	SN
2 Power Transfer	EL-CEPT		SN
2 ElectroLynx Harness	QC-C300P		MC
2 ElectroLynx Harness	QC-C1500P		MC
2 Door Position Switch (GRI)	GI-19912W (DPDT 1" DIA.)		VA01
1 Power Supply	AQD4 PDB-1R PDB-4C2		SN

NOTE: GASKETING BY ALUMINUM SUPPLIER.

DOOR NORMALLY CLOSED AND SECURE.

ACCESS BY VALID CREDENTIAL PRESENTATION RETRACTING LATCHES FOR A PRE DETERMINED TIME LIMIT AND THEN RELOCKING.

EGRESS ALWAYS FREE FOR IMMEDIATE EXIT.

REQUEST TO EXIT SENSORS ALLOW EXIT WITHOUT ALARM CONDITION.

DOOR POSITION SWITCHES PROVIDE OPEN/ CLOSED MONITORING TO BOTH ACCESS CONTROL SYSTEM AND INTRUSION ALARM SERVICE.

AUDIBLE ALARM SOUNDS WHEN DOORS ARE AJAR FOR A PREDETERMINED AMOUNT OF TIME.

LATCHES REMAIN PROJECTED/ LOCKED FAIL SECURE IN EVENT OF POWER LOSS.

KEY OVERRIDE CYLINDER FOR EMERGENCY ACCESS.

Doors: A.2

Hardware Set 6

2 Continuous Hinge	112HD 83" TEK	US28	IV
1 Removable Mullion	L980S 96	PC	SA
1 Exit Device	16 LC 8804 F LESS TRIM CPC	32D	SA
1 Exit Device	16 LC 8810 F CPC	32D	SA
3 Cylinder Housing	26-094	626	SC
1 Rim Cylinder Housing	20-079	626	SC
4 Cylinder Core	23-030 1-Bitted E KEYWAY (Cut-KEY, Pin-IC-CORE, Pin-KEY-SYS, Stp-DND, Stp-VKC)	626	SC
2 Door Closer	SC71A RW/PA SC70-61	689	FL
2 Mounting Plate	SC70-18PA	689	FL
2 Overhead Door Stop	104S	US32D	GL
1 Door Pull	8190HD-18 TYPE O MTG.	US32D	IV
1 Piezo	PZ1	US32D	SN
2 Door Position Switch (GRI)	GI-19912W (DPDT 1" DIA.)		VA01
1 Mullion Gasketing	5110 BL 120"		PE
2 Door Bottom Sweep	3452 CNB 36"		PE
1 Threshold	273 X 224 AFGT 72" MSES25SS		PE

NOTE: GASKETING BY ALUMINUM SUPPLIER.

DOORS NORMALLY CLOSED AND SECURE.

DOOR POSITION SWITCHES PROVIDE OPEN/ CLOSED MONITORING TO BOTH ACCESS CONTROL SYSTEM AND INTRUSION ALARM SERVICE.

AUDIBLE ALARM SOUNDS WHEN DOORS ARE AJAR FOR A PREDETERMINED AMOUNT OF TIME.

Door 2A = Exterior Doors, Frame and Hardware

Entrance style = V



Door Specifications :

1. Aluminum Storefront Entrance (1A.1+(A-2)
 - a. Framing: Tubelite 24650 Series 2"x 61/2" Flush Glaze or Equal
 - I. Base: 10"
 - II. Horizontal Mid-Rail: 6"
 - III. Glazing: 1"
 - b. Doors: Tubelite (WS) Wide Stile or Equal
 - I. Thickness: 1 3/4" Non-Thermal
 - II. Bottom Rail: 10"
 - III. Glazing: 1"
 - c. Finish: Manufacturer Standard Dark Bronze Anodized
 - d. Warranty: Manufacturer Standard but not less than 2 years
2. Glazing
 - a. Insulated Glass
 - I. 1" Overall Thickness (Entrance #1)
 1. 1/4" Clear Tempered Outboard Lite
 2. SB60 #2 Surface
 3. Mill Spacer
 4. 1/4" Clear Tempered Inboard Lite
 - II. 1/2" Overall Thickness (Vision Lites)
 1. 1/4" Clear Tempered Outboard Lite
 2. Mill Spacer
 - b. Insulated Architectural Panel (All Entrance Doors, Sidelights & Transoms U.N.O.)
 - I. 1" embossed aluminum adhered to solid phenolic panel both sides
 - II. EPS core
 - III. Factory applied finish to match storefront framing
 - c. Warranty: Manufacturer Standard
3. Vision Lites
 - a. (2) each Entrances #2-7, 13 & 21
 - b. NGP L-GLF-100 SP or Equal
 - c. 8" x 34"
 - d. Warranty: Manufacturer Standard
4. Door Viewers
 - a. (1) each installed in active leaf of Entrances #8, 10,11,15,16,17&20
 - b. IVES 190 Degree or equal
5. Security Film
 - a. Applied to the interior surface of all glass lites
 - b. 3M Scotchshield & Security Film Ultra S800 w/3M Impact Protection Profile Attachment
6. Aluminum Door Hardware
 - a. Provide, prep & apply door hardware in accordance with attached Opening List/Hardware Sets
 - b. No Substitutions
 - c. Warranty : Manufacturer(s) Standard
7. Sealants
 - a. Interior & Exterior single and/or multi-component commercial grade sealants compatible with /suitable for the surrounding substrates and finishes
 - b. Backer materials as required
 - c. Color: Bronze to match aluminum finish
8. Submittals
 - a. Provide for owners review & approval (1) copy, (electronic where applicable) including but not limited to Manufacturer product & performance data, product cut sheets and samples.

Hardware for Door 2A on next page

Door 2A = Exterior Doors, Frame and Hardware

Doors: 2A

Hardware Set 2

2	Continuous Hinge	112HD 83" EPT TEK	US28	IV
1	Removable Mullion	L980S 96	PC	SA
1	Exit Device	16 56 LC 8804 F LESS TRIM CPC	32D	SA
1	Exit Device	16 55 LC 8810 F CPC	32D	SA
1	Rim Cylinder Housing	20-079	626	SC
3	Cylinder Housing	26-094	626	SC
4	Cylinder Core	23-030 1-Bitted E KEYWAY (Cut-KEY, Pin-IC-CORE, Pin-KEY-SYS, Stp-DND, Stp-VKC)	626	SC
2	Door Closer	SC71A RW/PA SC70-61	689	FL
2	Mounting Plate	SC70-18PA	689	FL
2	Overhead Door Stop	104S	US32D	GL
1	Door Pull	8190HD-18 TYPE O MTG.	US32D	IV
1	Mullion Gasketing	5110 BL 120"		PE
2	Door Bottom Sweep	3452 CNB 36"		PE
1	Threshold	273 X 224 AFGT 72" MSES25SS		PE
1	Piezo	PZ1	US32D	SN
2	Power Transfer	EL-CEPT		SN
2	ElectroLynx Harness	QC-C300P		MC
2	ElectroLynx Harness	QC-C1500P		MC
2	Door Position Switch (GRI)	GI-19912W (DPDT 1" DIA.)		VA01
1	Power Supply	AQD4 PDB-1R PDB-4C2		SN

NOTE: GASKETING BY ALUMINUM SUPPLIER.

DOOR NORMALLY CLOSED AND SECURE.

ACCESS BY VALID CREDENTIAL PRESENTATION RETRACTING LATCHES FOR A PRE DETERMINED TIME LIMIT AND THEN RELOCKING.

EGRESS ALWAYS FREE FOR IMMEDIATE EXIT.

REQUEST TO EXIT SENSORS ALLOW EXIT WITHOUT ALARM CONDITION.

DOOR POSITION SWITCHES PROVIDE OPEN/ CLOSED MONITORING TO BOTH ACCESS CONTROL SYSTEM AND INTRUSION ALARM SERVICE.

AUDIBLE ALARM SOUNDS WHEN DOORS ARE AJAR FOR A PREDETERMINED AMOUNT OF TIME.

LATCHES REMAIN PROJECTED/ LOCKED FAIL SECURE I N EVENT OF POWER LOSS.

KEY OVERRIDE CYLINDER FOR EMERGENCY ACCESS.

Door 2B = Interior Door—Doors and hardware Only

Entrance style = V



Door Specifications :

1. Aluminum Storefront Entrance (1A.1+(A-2)
 - a. Framing: Tubelite 24650 Series 2"x 61/2" Flush Glaze or Equal
 - I. Base: 10"
 - II. Horizontal Mid-Rail: 6"
 - III. Glazing: 1"
 - b. Doors: Tubelite (WS) Wide Stile or Equal
 - I. Thickness: 1 3/4" Non-Thermal
 - II. Bottom Rail: 10"
 - III. Glazing: 1"
 - c. Finish: Manufacturer Standard Dark Bronze Anodized
 - d. Warranty: Manufacturer Standard but not less than 2 years
2. Glazing
 - a. Insulated Glass
 - I. 1" Overall Thickness (Entrance #1)
 1. 1/4" Clear Tempered Outboard Lite
 2. SB60 #2 Surface
 3. Mill Spacer
 4. 1/4" Clear Tempered Inboard Lite
 - II. 1/2" Overall Thickness (Vision Lites)
 1. 1/4" Clear Tempered Outboard Lite
 2. Mill Spacer
 - b. Insulated Architectural Panel (All Entrance Doors, Sidelights & Transoms U.N.O)
 - I. 1" embossed aluminum adhered to solid phenolic panel both sides
 - II. EPS core
 - III. Factory applied finish to match storefront framing
 - c. Warranty: Manufacturer Standard
3. Vision Lites
 - a. (2) each Entrances #2-7, 13 & 21
 - b. NGP L-GLF-100 SP or Equal
 - c. 8" x 34"
 - d. Warranty: Manufacturer Standard
4. Door Viewers
 - a. (1) each installed in active leaf of Entrances #8, 10,11,15,16,17&20
 - b. IVES 190 Degree or equal
5. Security Film
 - a. Applied to the interior surface of all glass lites
 - b. 3M Scotchshield & Security Film Ultra S800 w/3M Impact Protection Profile Attachment
6. Aluminum Door Hardware
 - a. Provide, prep & apply door hardware in accordance with attached Opening List/Hardware Sets
 - b. No Substitutions
 - c. Warranty : Manufacturer(s) Standard
7. Sealants
 - a. Interior & Exterior single and/or multi-component commercial grade sealants compatible with /suitable for the surrounding substrates and finishes
 - b. Backer materials as required
 - c. Color: Bronze to match aluminum finish
8. Submittals
 - a. Provide for owners review & approval (1) copy, (electronic where applicable) including but not limited to Manufacturer product & performance data, product cut sheets and samples.

Doors: 2B Hardware - Set #30 ALUM

2 Continuous Hinge	112HD 83" TEK	US28	IV
1 Push/Pull Combo	9190HD-33-18 TYPE NO MTG.	US32D	IV
1 Push Bar	9100HD-33 TYPE O MTG.	US32D	IV
2 Mounting Plate	SC70-18PA	689	FL
2 Door Closer	SC71A RW/PA SC70-61	689	FI

Door 3A = Exterior Doors, Frame and Hardware

Entrance style = V



Door Specifications :

1. Aluminum Storefront Entrance (1A.1+(A-2)
 - a. Framing: Tubelite 24650 Series 2"x 61/2" Flush Glaze or Equal
 - I. Base: 10"
 - II. Horizontal Mid-Rail: 6"
 - III. Glazing: 1"
 - b. Doors: Tubelite (WS) Wide Stile or Equal
 - I. Thickness: 1 3/4" Non-Thermal
 - II. Bottom Rail: 10"
 - III. Glazing: 1"
 - c. Finish: Manufacturer Standard Dark Bronze Anodized
 - d. Warranty: Manufacturer Standard but not less than 2 years
2. Glazing
 - a. Insulated Glass
 - I. 1" Overall Thickness (Entrance #1)
 1. 1/4" Clear Tempered Outboard Lite
 2. SB60 #2 Surface
 3. Mill Spacer
 4. 1/4" Clear Tempered Inboard Lite
 - II. 1/2" Overall Thickness (Vision Lites)
 1. 1/8" Clear Tempered Outboard Lite
 2. Mill Spacer
 - b. Insulated Architectural Panel (All Entrance Doors, Sidelights & Transoms U.N.O)
 - I. 1" embossed aluminum adhered to solid phenolic panel both sides
 - II. EPS core
 - III. Factory applied finish to match storefront framing
 - c. Warranty: Manufacturer Standard
3. Vision Lites
 - a. (2) each Entrances #2-7, 13 & 21
 - b. NGP L-GLF-100 SP or Equal
 - c. 8" x 34"
 - d. Warranty: Manufacturer Standard
4. Door Viewers
 - a. (1) each installed in active leaf of Entrances #8, 10,11,15,16,17&20
 - b. IVES 190 Degree or equal
5. Security Film
 - a. Applied to the interior surface of all glass lites
 - b. 3M Scotchshield & Security Film Ultra S800 w/3M Impact Protection Profile Attachment
6. Aluminum Door Hardware
 - a. Provide, prep & apply door hardware in accordance with attached Opening List/Hardware Sets
 - b. No Substitutions
 - c. Warranty : Manufacturer(s) Standard
7. Sealants
 - a. Interior & Exterior single and/or multi-component commercial grade sealants compatible with /suitable for the surrounding substrates and finishes
 - b. Backer materials as required
 - c. Color: Bronze to match aluminum finish
8. Submittals
 - a. Provide for owners review & approval (1) copy, (electronic where applicable) including but not limited to Manufacturer product & performance data, product cut sheets and samples.

Hardware for Door 3A on next page

Door 3A = Exterior Doors, Frame and Hardware

Doors: 3A

Hardware Set 2

2	Continuous Hinge	112HD 83" EPT TEK	US28	IV
1	Removable Mullion	L980S 96	PC	SA
1	Exit Device	16 56 LC 8804 F LESS TRIM CPC	32D	SA
1	Exit Device	16 55 LC 8810 F CPC	32D	SA
1	Rim Cylinder Housing	20-079	626	SC
3	Cylinder Housing	26-094	626	SC
4	Cylinder Core	23-030 1-Bitted E KEYWAY (Cut-KEY, Pin-IC-CORE, Pin-KEY-SYS, Stp-DND, Stp-VKC)	626	SC
2	Door Closer	SC71A RW/PA SC70-61	689	FL
2	Mounting Plate	SC70-18PA	689	FL
2	Overhead Door Stop	104S	US32D	GL
1	Door Pull	8190HD-18 TYPE O MTG.	US32D	IV
1	Mullion Gasketing	5110 BL 120"		PE
2	Door Bottom Sweep	3452 CNB 36"		PE
1	Threshold	273 X 224 AFGT 72" MSES25SS		PE
1	Piezo	PZ1	US32D	SN
2	Power Transfer	EL-CEPT		SN
2	ElectroLynx Harness	QC-C300P		MC
2	ElectroLynx Harness	QC-C1500P		MC
2	Door Position Switch (GRI)	GI-19912W (DPDT 1" DIA.)		VA01
1	Power Supply	AQD4 PDB-1R PDB-4C2		SN

NOTE: GASKETING BY ALUMINUM SUPPLIER.

DOOR NORMALLY CLOSED AND SECURE.

ACCESS BY VALID CREDENTIAL PRESENTATION RETRACTING LATCHES FOR A PRE DETERMINED TIME LIMIT AND THEN RELOCKING.

EGRESS ALWAYS FREE FOR IMMEDIATE EXIT.

REQUEST TO EXIT SENSORS ALLOW EXIT WITHOUT ALARM CONDITION.

DOOR POSITION SWITCHES PROVIDE OPEN/ CLOSED MONITORING TO BOTH ACCESS CONTROL SYSTEM AND INTRUSION ALARM SERVICE.

AUDIBLE ALARM SOUNDS WHEN DOORS ARE AJAR FOR A PREDETERMINED AMOUNT OF TIME.

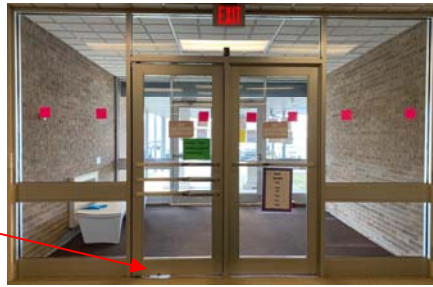
LATCHES REMAIN PROJECTED/ LOCKED FAIL SECURE I N EVENT OF POWER LOSS.

KEY OVERRIDE CYLINDER FOR EMERGENCY ACCESS.

Door 3B = Interior Door—Doors and hardware only - (patch hole in floor)

Entrance style = V

Patch
Hole in
Floor



1. Aluminum Storefront Entrance (1A.1+(A-2)
 - a. Framing: Tubelite 24650 Series 2"x 61/2" Flush Glaze or Equal
 - I. Base: 10"
 - II. Horizontal Mid-Rail: 6"
 - III. Glazing: 1"
 - b. Doors: Tubelite (WS) Wide Stile or Equal
 - I. Thickness: 1 3/4" Non-Thermal
 - II. Bottom Rail: 10"
 - III. Glazing: 1"
 - c. Finish: Manufacturer Standard Dark Bronze Anodized
 - d. Warranty: Manufacturer Standard but not less than 2 years
2. Glazing
 - a. Insulated Glass
 - I. 1" Overall Thickness (Entrance #1)
 1. 1/4" Clear Tempered Outboard Lite
 2. SB60 #2 Surface
 3. Mill Spacer
 4. 1/4" Clear Tempered Inboard Lite
 - II. 1/2" Overall Thickness (Vision Lites)
 1. 1/2" Clear Tempered Outboard Lite
 2. Mill Spacer
 - b. Insulated Architectural Panel (All Entrance Doors, Sidelights & Transoms U.N.O)
 - I. 1" embossed aluminum adhered to solid phenolic panel both sides
 - II. EPS core
 - III. Factory applied finish to match storefront framing
 - c. Warranty: Manufacturer Standard
3. Vision Lites
 - a. (2) each Entrances #2-7, 13 & 21
 - b. NGP L-GLF-100 SP or Equal
 - c. 8" x 34"
 - d. Warranty: Manufacturer Standard
4. Door Viewers
 - a. (1) each installed in active leaf of Entrances #8, 10,11,15,16,17&20
 - b. IVES 190 Degree or equal
5. Security Film
 - a. Applied to the interior surface of all glass lites
 - b. 3M Scotchshield & Security Film Ultra S800 w/3M Impact Protection Profile Attachment
6. Aluminum Door Hardware
 - a. Provide, prep & apply door hardware in accordance with attached Opening List/Hardware Sets
 - b. No Substitutions
 - c. Warranty : Manufacturer(s) Standard
7. Sealants
 - a. Interior & Exterior single and/or multi-component commercial grade sealants compatible with /suitable for the surrounding substrates and finishes
 - b. Backer materials as required
 - c. Color: Bronze to match aluminum finish
8. Submittals
 - a. Provide for owners review & approval (1) copy, (electronic where applicable) including but not limited to Manufacturer product & performance data, product cut sheets and samples.

Doors: 3B Hardware - Set #30 ALUM

2 Continuous Hinge	112HD 83" TEK	US28	IV
1 Push/Pull Combo	9190HD-33-18 TYPE NO MTG.	US32D	IV
1 Push Bar	9100HD-33 TYPE O MTG.	US32D	IV
2 Mounting Plate	SC70-18PA	689	FL
2 Door Closer	SC71A RW/PA SC70-61	689	FL

Door 4A = Exterior Doors, Frame and Hardware

Entrance style = V



Door Specifications :

1. Aluminum Storefront Entrance (1A.1+(A-2)
 - a. Framing: Tubelite 24650 Series 2"x 61/2" Flush Glaze or Equal
 - I. Base: 10"
 - II. Horizontal Mid-Rail: 6"
 - III. Glazing: 1"
 - b. Doors: Tubelite (WS) Wide Stile or Equal
 - I. Thickness: 1 3/4" Non-Thermal
 - II. Bottom Rail: 10"
 - III. Glazing: 1"
 - c. Finish: Manufacturer Standard Dark Bronze Anodized
 - d. Warranty: Manufacturer Standard but not less than 2 years
2. Glazing
 - a. Insulated Glass
 - I. 1" Overall Thickness (Entrance #1)
 1. 1/4" Clear Tempered Outboard Lite
 2. SB60 #2 Surface
 3. Mill Spacer
 4. 1/4" Clear Tempered Inboard Lite
 - II. 1/2" Overall Thickness (Vision Lites)
 1. 1/8" Clear Tempered Outboard Lite
 2. Mill Spacer
 - b. Insulated Architectural Panel (All Entrance Doors, Sidelights & Transoms U.N.O)
 - I. 1" embossed aluminum adhered to solid phenolic panel both sides
 - II. EPS core
 - III. Factory applied finish to match storefront framing
 - c. Warranty: Manufacturer Standard
3. Vision Lites
 - a. (2) each Entrances #2-7, 13 & 21
 - b. NGP L-GLF-100 SP or Equal
 - c. 8" x 34"
 - d. Warranty: Manufacturer Standard
4. Door Viewers
 - a. (1) each installed in active leaf of Entrances #8, 10, 11, 15, 16, 17 & 20
 - b. IVES 190 Degree or equal
5. Security Film
 - a. Applied to the interior surface of all glass lites
 - b. 3M Scotchshield & Security Film Ultra S800 w/3M Impact Protection Profile Attachment
6. Aluminum Door Hardware
 - a. Provide, prep & apply door hardware in accordance with attached Opening List/Hardware Sets
 - b. No Substitutions
 - c. Warranty : Manufacturer(s) Standard
7. Sealants
 - a. Interior & Exterior single and/or multi-component commercial grade sealants compatible with /suitable for the surrounding substrates and finishes
 - b. Backer materials as required
 - c. Color: Bronze to match aluminum finish
8. Submittals
 - a. Provide for owners review & approval (1) copy, (electronic where applicable) including but not limited to Manufacturer product & performance data, product cut sheets and samples.

Hardware for Door 4A on next page

Door 4A = Exterior Doors, Frame and Hardware

Doors: 4A

Hardware Set 6

2	Continuous Hinge	112HD 83" TEK	US28	IV
1	Removable Mullion	L980S 96	PC	SA
1	Exit Device	16 LC 8804 F LESS TRJM CPC	32D	SA
1	Exit Device	16 LC 8810 F CPC	32D	SA
3	Cylinder Housing	26-094	626	SC
1	Rim Cylinder Housing	20-079	626	SC
4	Cylinder Core	23-030 1-Bitted E KEYWAY (Cut-KEY, Pin-IC-CORE, Pin-KEY-SYS, Stp-DND, Stp-VKC)	626	SC
2	Door Closer	SC71A RW/PA SC70-61	689	FL
2	Mounting Plate	SC70-18PA	689	FL
2	Overhead Door Stop	104S	US32D	GL
1	Door Pull	8190HD-18 TYPE O MTG.	US32D	IV
1	Piezo	PZ1	US32D	SN
2	Door Position Switch (GRI)	GI-19912W (DPDT 1" DIA.)		VA01
1	Mullion Gasketing	5110 BL 120"		PE
2	Door Bottom Sweep	3452 CNB 36"		PE
1	Threshold	273 X 224 AFGT 72" MSES25SS		PE

NOTE: GASKETING BY ALUMINUM SUPPLIER.

DOORS NORMALLY CLOSED AND SECURE.

DOOR POSITION SWITCHES PROVIDE OPEN/ CLOSED MONITORING TO BOTH ACCESS CONTROL SYSTEM AND INTRUSION ALARM SERVICE.

AUDIBLE ALARM SOUNDS WHEN DOORS ARE AJAR FOR A PREDETERMINED AMOUNT OF TIME.

Door 5A = Exterior Doors, Frame and Hardware

Entrance style = V



Door Specifications :

1. Aluminum Storefront Entrance (1A.1+(A-2)
 - a. Framing: Tubelite 24650 Series 2"x 61/2" Flush Glaze or Equal
 - I. Base: 10"
 - II. Horizontal Mid-Rail: 6"
 - III. Glazing: 1"
 - b. Doors: Tubelite (WS) Wide Stile or Equal
 - I. Thickness: 1 3/4" Non-Thermal
 - II. Bottom Rail: 10"
 - III. Glazing: 1"
 - c. Finish: Manufacturer Standard Dark Bronze Anodized
 - d. Warranty: Manufacturer Standard but not less than 2 years
2. Glazing
 - a. Insulated Glass
 - I. 1" Overall Thickness (Entrance #1)
 1. 1/4" Clear Tempered Outboard Lite
 2. SB60 #2 Surface
 3. Mill Spacer
 4. 1/4" Clear Tempered Inboard Lite
 - II. 1/2" Overall Thickness (Vision Lites)
 1. 1/8" Clear Tempered Outboard Lite
 2. Mill Spacer
 - b. Insulated Architectural Panel (All Entrance Doors, Sidelights & Transoms U.N.O)
 - I. 1" embossed aluminum adhered to solid phenolic panel both sides
 - II. EPS core
 - III. Factory applied finish to match storefront framing
 - c. Warranty: Manufacturer Standard
3. Vision Lites
 - a. (2) each Entrances #2-7, 13 & 21
 - b. NGP L-GLF-100 SP or Equal
 - c. 8" x 34"
 - d. Warranty: Manufacturer Standard
4. Door Viewers
 - a. (1) each installed in active leaf of Entrances #8, 10,11,15,16,17&20
 - b. IVES 190 Degree or equal
5. Security Film
 - a. Applied to the interior surface of all glass lites
 - b. 3M Scotchshield & Security Film Ultra S800 w/3M Impact Protection Profile Attachment
6. Aluminum Door Hardware
 - a. Provide, prep & apply door hardware in accordance with attached Opening List/Hardware Sets
 - b. No Substitutions
 - c. Warranty : Manufacturer(s) Standard
7. Sealants
 - a. Interior & Exterior single and/or multi-component commercial grade sealants compatible with /suitable for the surrounding substrates and finishes
 - b. Backer materials as required
 - c. Color: Bronze to match aluminum finish
8. Submittals
 - a. Provide for owners review & approval (1) copy, (electronic where applicable) including but not limited to Manufacturer product & performance data, product cut sheets and samples.

Hardware for Door 5A on next page

Door 5A = Exterior Doors, Frame and Hardware

Doors: 5A

Hardware Set 6

2	Continuous Hinge	112HD 83" TEK	US28	IV
1	Removable Mullion	L980S 96	PC	SA
1	Exit Device	16 LC 8804 F LESS TRIM CPC	32D	SA
1	Exit Device	16 LC 8810 F CPC	32D	SA
3	Cylinder Housing	26-094	626	SC
1	Rim Cylinder Housing	20-079	626	SC
4	Cylinder Core	23-030 1-Bitted E KEYWAY (Cut-KEY, Pin-IC-CORE, Pin-KEY-SYS, Stp-DND, Stp-VKC)	626	SC
2	Door Closer	SC71A RW/PA SC70-61	689	FL
2	Mounting Plate	SC70-18PA	689	FL
2	Overhead Door Stop	104S	US32D	GL
1	Door Pull	8190HD-18 TYPE O MTG.	US32D	IV
1	Piezo	PZ1	US32D	SN
2	Door Position Switch (GRI)	GI-19912W (DPDT 1" DIA.)		VA01
1	Mullion Gasketing	5110 BL 120"		PE
2	Door Bottom Sweep	3452 CNB 36"		PE
1	Threshold	273 X 224 AFGT 72" MSES25SS		PE

NOTE: GASKETING BY ALUMINUM SUPPLIER.

DOORS NORMALLY CLOSED AND SECURE.

DOOR POSITION SWITCHES PROVIDE OPEN/ CLOSED MONITORING TO BOTH ACCESS CONTROL SYSTEM AND INTRUSION ALARM SERVICE.

AUDIBLE ALARM SOUNDS WHEN DOORS ARE AJAR FOR A PREDETERMINED AMOUNT OF TIME.

Door 5B = Interior Doors and hinges only - keep other hardware

Entrance style = V



Door Specifications :

1. Aluminum Storefront Entrance (1A.1+(A-2)
 - a. Framing: Tubelite 24650 Series 2"x 61/2" Flush Glaze or Equal
 - I. Base: 10"
 - II. Horizontal Mid-Rail: 6"
 - III. Glazing: 1"
 - b. Doors: Tubelite (WS) Wide Stile or Equal
 - I. Thickness: 1 3/4" Non-Thermal
 - II. Bottom Rail: 10"
 - III. Glazing: 1"
 - c. Finish: Manufacturer Standard Dark Bronze Anodized
 - d. Warranty: Manufacturer Standard but not less than 2 years
2. Glazing
 - a. Insulated Glass
 - I. 1" Overall Thickness (Entrance #1)
 1. 1/4" Clear Tempered Outboard Lite
 2. SB60 #2 Surface
 3. Mill Spacer
 4. 1/4" Clear Tempered Inboard Lite
 - II. 1/2" Overall Thickness (Vision Lites)
 1. 1/8" Clear Tempered Outboard Lite
 2. Mill Spacer
 - b. Insulated Architectural Panel (All Entrance Doors, Sidelights & Transoms U.N.O)
 - I. 1" embossed aluminum adhered to solid phenolic panel both sides
 - II. EPS core
 - III. Factory applied finish to match storefront framing
 - c. Warranty: Manufacturer Standard
3. Vision Lites
 - a. (2) each Entrances #2-7, 13 & 21
 - b. NGP L-GLF-100 SP or Equal
 - c. 8" x 34"
 - d. Warranty: Manufacturer Standard
4. Door Viewers
 - a. (1) each installed in active leaf of Entrances #8, 10,11,15,16,17&20
 - b. IVES 190 Degree or equal
5. Security Film
 - a. Applied to the interior surface of all glass lites
 - b. 3M Scotchshield & Security Film Ultra S800 w/3M Impact Protection Profile Attachment
6. Aluminum Door Hardware
 - a. Provide, prep & apply door hardware in accordance with attached Opening List/Hardware Sets
 - b. No Substitutions
 - c. Warranty : Manufacturer(s) Standard
7. Sealants
 - a. Interior & Exterior single and/or multi-component commercial grade sealants compatible with /suitable for the surrounding substrates and finishes
 - b. Backer materials as required
 - c. Color: Bronze to match aluminum finish
8. Submittals
 - a. Provide for owners review & approval (1) copy, (electronic where applicable) including but not limited to Manufacturer product & performance data, product cut sheets and samples.

Doors: 5B Hardware - Set #31

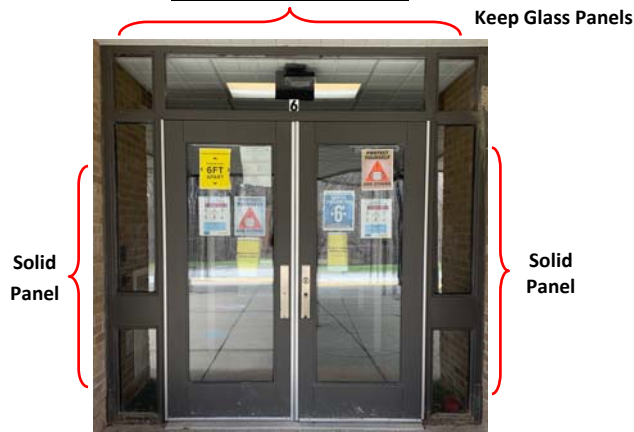
1 Re-use Existing Hardware
2 Leaf Cover

REUSE EXISTING HARDWARE
DOOR LEAF REPLACEMENT COVER SL21
SERIES (SELECT)

MISC
VA01

Door 6A = Exterior Doors, Frame and Hardware

Entrance style = V



Door Specifications :

1. Aluminum Storefront Entrance (1A.1+(A-2)
 - a. Framing: Tubelite 24650 Series 2"x 61/2" Flush Glaze or Equal
 - I. Base: 10"
 - II. Horizontal Mid-Rail: 6"
 - III. Glazing: 1"
 - b. Doors: Tubelite (WS) Wide Stile or Equal
 - I. Thickness: 1 3/4" Non-Thermal
 - II. Bottom Rail: 10"
 - III. Glazing: 1"
 - c. Finish: Manufacturer Standard Dark Bronze Anodized
 - d. Warranty: Manufacturer Standard but not less than 2 years
2. Glazing
 - a. Insulated Glass
 - I. 1" Overall Thickness (Entrance #1)
 1. 1/4" Clear Tempered Outboard Lite
 2. SB60 #2 Surface
 3. Mill Spacer
 4. 1/4" Clear Tempered Inboard Lite
 - II. 1/2" Overall Thickness (Vision Lites)
 1. 1/4" Clear Tempered Outboard Lite
 2. Mill Spacer
 - b. Insulated Architectural Panel (All Entrance Doors, Sidelights & Transoms U.N.O)
 - I. 1" embossed aluminum adhered to solid phenolic panel both sides
 - II. EPS core
 - III. Factory applied finish to match storefront framing
 - c. Warranty: Manufacturer Standard
3. Vision Lites
 - a. (2) each Entrances #2-7, 13 & 21
 - b. NGP L-GLF-100 SP or Equal
 - c. 8" x 34"
 - d. Warranty: Manufacturer Standard
4. Door Viewers
 - a. (1) each installed in active leaf of Entrances #8, 10,11,15,16,17&20
 - b. IVES 190 Degree or equal
5. Security Film
 - a. Applied to the interior surface of all glass lites
 - b. 3M Scotchshield & Security Film Ultra S800 w/3M Impact Protection Profile Attachment
6. Aluminum Door Hardware
 - a. Provide, prep & apply door hardware in accordance with attached Opening List/Hardware Sets
 - b. No Substitutions
 - c. Warranty : Manufacturer(s) Standard
7. Sealants
 - a. Interior & Exterior single and/or multi-component commercial grade sealants compatible with /suitable for the surrounding substrates and finishes
 - b. Backer materials as required
 - c. Color: Bronze to match aluminum finish
8. Submittals
 - a. Provide for owners review & approval (1) copy, (electronic where applicable) including but not limited to Manufacturer product & performance data, product cut sheets and samples.

Hardware for Door 6A on next page

Door 6A = Exterior Doors, Frame and Hardware

Doors: 6A

Hardware Set 6

2	Continuous Hinge	112HD 83" TEK	US28	IV
1	Removable Mullion	L980S 96	PC	SA
1	Exit Device	16 LC 8804 F LESS TRIM CPC	32D	SA
1	Exit Device	16 LC 8810 F CPC	32D	SA
3	Cylinder Housing	26-094	626	SC
1	Rim Cylinder Housing	20-079	626	SC
4	Cylinder Core	23-030 1-Bitted E KEYWAY (Cut-KEY, Pin-IC-CORE, Pin-KEY-SYS, Stp-DND, Stp-VKC)	626	SC
2	Door Closer	SC71A RW/PA SC70-61	689	FL
2	Mounting Plate	SC70-18PA	689	FL
2	Overhead Door Stop	104S	US32D	GL
1	Door Pull	8190HD-18 TYPE O MTG.	US32D	IV
1	Piezo	PZ1	US32D	SN
2	Door Position Switch (GRI)	GI-19912W (DPDT 1" DIA.)		VA01
1	Mullion Gasketing	5110 BL 120"		PE
2	Door Bottom Sweep	3452 CNB 36"		PE
1	Threshold	273 X 224 AFGT 72" MSES25SS		PE

NOTE: GASKETING BY ALUMINUM SUPPLIER.

DOORS NORMALLY CLOSED AND SECURE.

DOOR POSITION SWITCHES PROVIDE OPEN/ CLOSED MONITORING TO BOTH ACCESS CONTROL SYSTEM AND INTRUSION ALARM SERVICE.

AUDIBLE ALARM SOUNDS WHEN DOORS ARE AJAR FOR A PREDETERMINED AMOUNT OF TIME.

Door 6B = Interior Doors and door hinge only - Keep hardware

Entrance style = V



1. Aluminum Storefront Entrance (1A.1+(A-2)
 - a. Framing: Tubelite 24650 Series 2"x 61/2" Flush Glaze or Equal
 - I. Base: 10"
 - II. Horizontal Mid-Rail: 6"
 - III. Glazing: 1"
 - b. Doors: Tubelite (WS) Wide Stile or Equal
 - I. Thickness: 1 3/4" Non-Thermal
 - II. Bottom Rail: 10"
 - III. Glazing: 1"
 - c. Finish: Manufacturer Standard Dark Bronze Anodized
 - d. Warranty: Manufacturer Standard but not less than 2 years
2. Glazing
 - a. Insulated Glass
 - I. 1" Overall Thickness (Entrance #1)
 1. 1/4" Clear Tempered Outboard Lite
 2. SB60 #2 Surface
 3. Mill Spacer
 4. 1/4" Clear Tempered Inboard Lite
 - II. 1/2" Overall Thickness (Vision Lites)
 1. 1/8" Clear Tempered Outboard Lite
 2. Mill Spacer
 - b. Insulated Architectural Panel (All Entrance Doors, Sidelights & Transoms U.N.O)
 - I. 1" embossed aluminum adhered to solid phenolic panel both sides
 - II. EPS core
 - III. Factory applied finish to match storefront framing
 - c. Warranty: Manufacturer Standard
3. Vision Lites
 - a. (2) each Entrances #2-7, 13 & 21
 - b. NGP L-GLF-100 SP or Equal
 - c. 8" x 34"
 - d. Warranty: Manufacturer Standard
4. Door Viewers
 - a. (1) each installed in active leaf of Entrances #8, 10,11,15,16,17&20
 - b. IVES 190 Degree or equal
5. Security Film
 - a. Applied to the interior surface of all glass lites
 - b. 3M Scotchshield & Security Film Ultra S800 w/3M Impact Protection Profile Attachment
6. Aluminum Door Hardware
 - a. Provide, prep & apply door hardware in accordance with attached Opening List/Hardware Sets
 - b. No Substitutions
 - c. Warranty : Manufacturer(s) Standard
7. Sealants
 - a. Interior & Exterior single and/or multi-component commercial grade sealants compatible with /suitable for the surrounding substrates and finishes
 - b. Backer materials as required
 - c. Color: Bronze to match aluminum finish
8. Submittals
 - a. Provide for owners review & approval (1) copy, (electronic where applicable) including but not limited to Manufacturer product & performance data, product cut sheets and samples.

Doors: 6B Hardware - Set #31

1 Re-use Existing Hardware
2 Leaf Cover

REUSE EXISTING HARDWARE
DOOR LEAF REPLACEMENT COVER SL21
SERIES (SELECT)

MISC
VA01

Door 7A = Exterior Doors, Frame and Hardware

Entrance style = V



Door Specifications :

1. Aluminum Storefront Entrance (1A.1+(A-2)
 - a. Framing: Tubelite 24650 Series 2"x 61/2" Flush Glaze or Equal
 - I. Base: 10"
 - II. Horizontal Mid-Rail: 6"
 - III. Glazing: 1"
 - b. Doors: Tubelite (WS) Wide Stile or Equal
 - I. Thickness: 1 3/4" Non-Thermal
 - II. Bottom Rail: 10"
 - III. Glazing: 1"
 - c. Finish: Manufacturer Standard Dark Bronze Anodized
 - d. Warranty: Manufacturer Standard but not less than 2 years
2. Glazing
 - a. Insulated Glass
 - I. 1" Overall Thickness (Entrance #1)
 1. 1/4" Clear Tempered Outboard Lite
 2. SB60 #2 Surface
 3. Mill Spacer
 4. 1/4" Clear Tempered Inboard Lite
 - II. 1/2" Overall Thickness (Vision Lites)
 1. 1/8" Clear Tempered Outboard Lite
 2. Mill Spacer
 - b. Insulated Architectural Panel (All Entrance Doors, Sidelights & Transoms U.N.O)
 - I. 1" embossed aluminum adhered to solid phenolic panel both sides
 - II. EPS core
 - III. Factory applied finish to match storefront framing
 - c. Warranty: Manufacturer Standard
3. Vision Lites
 - a. (2) each Entrances #2-7, 13 & 21
 - b. NGP L-GLF-100 SP or Equal
 - c. 8" x 34"
 - d. Warranty: Manufacturer Standard
4. Door Viewers
 - a. (1) each installed in active leaf of Entrances #8, 10,11,15,16,17&20
 - b. IVES 190 Degree or equal
5. Security Film
 - a. Applied to the interior surface of all glass lites
 - b. 3M Scotchshield & Security Film Ultra S800 w/3M Impact Protection Profile Attachment
6. Aluminum Door Hardware
 - a. Provide, prep & apply door hardware in accordance with attached Opening List/Hardware Sets
 - b. No Substitutions
 - c. Warranty : Manufacturer(s) Standard
7. Sealants
 - a. Interior & Exterior single and/or multi-component commercial grade sealants compatible with /suitable for the surrounding substrates and finishes
 - b. Backer materials as required
 - c. Color: Bronze to match aluminum finish
8. Submittals
 - a. Provide for owners review & approval (1) copy, (electronic where applicable) including but not limited to Manufacturer product & performance data, product cut sheets and samples.

Hardware for Door 7A on next page

Door 7A = Exterior Doors, Frame and Hardware

Doors: 7A

Hardware Set 6

2	Continuous Hinge	112HD 83" TEK	US28	IV
1	Removable Mullion	L980S 96	PC	SA
1	Exit Device	16 LC 8804 F LESS TRIM CPC	32D	SA
1	Exit Device	16 LC 8810 F CPC	32D	SA
3	Cylinder Housing	26-094	626	SC
1	Rim Cylinder Housing	20-079	626	SC
4	Cylinder Core	23-030 1-Bitted E KEYWAY (Cut-KEY, Pin-IC-CORE, Pin-KEY-SYS, Stp-DND, Stp-VKC)	626	SC
2	Door Closer	SC71A RW/PA SC70-61	689	FL
2	Mounting Plate	SC70-18PA	689	FL
2	Overhead Door Stop	104S	US32D	GL
1	Door Pull	8190HD-18 TYPE O MTG.	US32D	IV
1	Piezo	PZ1	US32D	SN
2	Door Position Switch (GRI)	GI-19912W (DPDT 1" DIA.)		VA01
1	Mullion Gasketing	5110 BL 120"		PE
2	Door Bottom Sweep	3452 CNB 36"		PE
1	Threshold	273 X 224 AFGT 72" MSSES25SS		PE

NOTE: GASKETING BY ALUMINUM SUPPLIER.

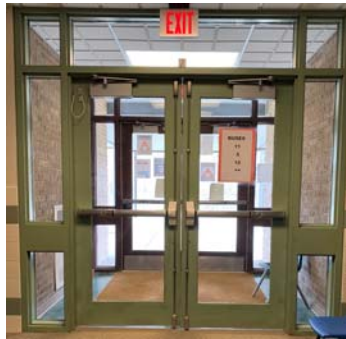
DOORS NORMALLY CLOSED AND SECURE.

DOOR POSITION SWITCHES PROVIDE OPEN/ CLOSED MONITORING TO BOTH ACCESS CONTROL SYSTEM AND INTRUSION ALARM SERVICE.

AUDIBLE ALARM SOUNDS WHEN DOORS ARE AJAR FOR A PREDETERMINED AMOUNT OF TIME.

Door 7B = Interior Door - Doors and Hinges only - keep other hardware

Entrance style = V



1. Aluminum Storefront Entrance (1A.1+(A-2)
 - a. Framing: Tubelite 24650 Series 2"x 61/2" Flush Glaze or Equal
 - I. Base: 10"
 - II. Horizontal Mid-Rail: 6"
 - III. Glazing: 1"
 - b. Doors: Tubelite (WS) Wide Stile or Equal
 - I. Thickness: 1 3/4" Non-Thermal
 - II. Bottom Rail: 10"
 - III. Glazing: 1"
 - c. Finish: Manufacturer Standard Dark Bronze Anodized
 - d. Warranty: Manufacturer Standard but not less than 2 years
2. Glazing
 - a. Insulated Glass
 - I. 1" Overall Thickness (Entrance #1)
 1. 1/4" Clear Tempered Outboard Lite
 2. SB60 #2 Surface
 3. Mill Spacer
 4. 1/4" Clear Tempered Inboard Lite
 - II. 1/2" Overall Thickness (Vision Lites)
 1. 1/4" Clear Tempered Outboard Lite
 2. Mill Spacer
 - b. Insulated Architectural Panel (All Entrance Doors, Sidelights & Transoms U.N.O)
 - I. 1" embossed aluminum adhered to solid phenolic panel both sides
 - II. EPS core
 - III. Factory applied finish to match storefront framing
 - c. Warranty: Manufacturer Standard
3. Vision Lites
 - a. (2) each Entrances #2-7, 13 & 21
 - b. NGP L-GLF-100 SP or Equal
 - c. 8" x 34"
 - d. Warranty: Manufacturer Standard
4. Door Viewers
 - a. (1) each installed in active leaf of Entrances #8, 10,11,15,16,17&20
 - b. IVES 190 Degree or equal
5. Security Film
 - a. Applied to the interior surface of all glass lites
 - b. 3M Scotchshield & Security Film Ultra S800 w/3M Impact Protection Profile Attachment
6. Aluminum Door Hardware
 - a. Provide, prep & apply door hardware in accordance with attached Opening List/Hardware Sets
 - b. No Substitutions
 - c. Warranty : Manufacturer(s) Standard
7. Sealants
 - a. Interior & Exterior single and/or multi-component commercial grade sealants compatible with /suitable for the surrounding substrates and finishes
 - b. Backer materials as required
 - c. Color: Bronze to match aluminum finish
8. Submittals
 - a. Provide for owners review & approval (1) copy, (electronic where applicable) including but not limited to Manufacturer product & performance data, product cut sheets and samples.

Doors: 7B Hardware - Set #31

- 1 Re-use Existing Hardware
- 2 Leaf Cover

REUSE EXISTING HARDWARE
DOOR LEAF REPLACEMENT COVER SL21
SERIES (SELECT)

MISC
VA01

Door 8 = Exterior Doors, Frame and Hardware

Entrance style = S



Door Specifications :

1. Aluminum Storefront Entrance (1A.1+(A-2)
 - a. Framing: Tubelite 24650 Series 2"x 61/2" Flush Glaze or Equal
 - I. Base: 10"
 - II. Horizontal Mid-Rail: 6"
 - III. Glazing: 1"
 - b. Doors: Tubelite (WS) Wide Stile or Equal
 - I. Thickness: 1 3/4" Non-Thermal
 - II. Bottom Rail: 10"
 - III. Glazing: 1"
 - c. Finish: Manufacturer Standard Dark Bronze Anodized
 - d. Warranty: Manufacturer Standard but not less than 2 years
2. Glazing
 - a. Insulated Glass
 - I. 1" Overall Thickness (Entrance #1)
 1. 1/4" Clear Tempered Outboard Lite
 2. SB60 #2 Surface
 3. Mill Spacer
 4. 1/4" Clear Tempered Inboard Lite
 - II. 1/2" Overall Thickness (Vision Lites)
 1. 1/8" Clear Tempered Outboard Lite
 2. Mill Spacer
 - b. Insulated Architectural Panel (All Entrance Doors, Sidelights & Transoms U.N.O)
 - I. 1" embossed aluminum adhered to solid phenolic panel both sides
 - II. EPS core
 - III. Factory applied finish to match storefront framing
 - c. Warranty: Manufacturer Standard
3. Vision Lites
 - a. (2) each Entrances #2-7, 13 & 21
 - b. NGP L-GLF-100 SP or Equal
 - c. 8" x 34"
 - d. Warranty: Manufacturer Standard
4. Door Viewers
 - a. (1) each installed in active leaf of Entrances #8, 10,11,15,16,17&20
 - b. IVES 190 Degree or equal
5. Security Film
 - a. Applied to the interior surface of all glass lites
 - b. 3M Scotchshield & Security Film Ultra S800 w/3M Impact Protection Profile Attachment
6. Aluminum Door Hardware
 - a. Provide, prep & apply door hardware in accordance with attached Opening List/Hardware Sets
 - b. No Substitutions
 - c. Warranty : Manufacturer(s) Standard
7. Sealants
 - a. Interior & Exterior single and/or multi-component commercial grade sealants compatible with /suitable for the surrounding substrates and finishes
 - b. Backer materials as required
 - c. Color: Bronze to match aluminum finish
8. Submittals
 - a. Provide for owners review & approval (1) copy, (electronic where applicable) including but not limited to Manufacturer product & performance data, product cut sheets and samples.

Hardware for Door 8 on next page

Door 8 = Exterior Doors, Frame and Hardware

Doors: 8

Hardware Set 6

2	Continuous Hinge	112HD 83" TEK	US28	IV
1	Removable Mullion	L980S 96	PC	SA
1	Exit Device	16 LC 8804 F LESS TRIM CPC	32D	SA
1	Exit Device	16 LC 8810 F CPC	32D	SA
3	Cylinder Housing	26-094	626	SC
1	Rim Cylinder Housing	20-079	626	SC
4	Cylinder Core	23-030 1-Bitted E KEYWAY (Cut-KEY, Pin-IC-CORE, Pin-KEY-SYS, Stp-DND, Stp-VKC)	626	SC
2	Door Closer	SC71A RW/PA SC70-61	689	FL
2	Mounting Plate	SC70-18PA	689	FL
2	Overhead Door Stop	104S	US32D	GL
1	Door Pull	8190HD-18 TYPE O MTG.	US32D	IV
1	Piezo	PZ1	US32D	SN
2	Door Position Switch (GRI)	GI-19912W (DPDT 1" DIA.)		VA01
1	Mullion Gasketing	5110 BL 120"		PE
2	Door Bottom Sweep	3452 CNB 36"		PE
1	Threshold	273 X 224 AFGT 72" MSSES25SS		PE
NOTE: GASKETING BY ALUMINUM SUPPLIER.				

DOORS NORMALLY CLOSED AND SECURE.

DOOR POSITION SWITCHES PROVIDE OPEN/ CLOSED MONITORING TO BOTH ACCESS CONTROL SYSTEM AND INTRUSION ALARM SERVICE.

AUDIBLE ALARM SOUNDS WHEN DOORS ARE AJAR FOR A PREDETERMINED AMOUNT OF TIME.

Door 10 = Exterior Door, Frame and Hardware

Entrance style = S



Solid
Panels

Door Specifications :

1. Aluminum Storefront Entrance (1A.1+(A-2)
 - a. Framing: Tubelite 24650 Series 2"x 61/2" Flush Glaze or Equal
 - I. Base: 10"
 - II. Horizontal Mid-Rail: 6"
 - III. Glazing: 1"
 - b. Doors: Tubelite (WS) Wide Stile or Equal
 - I. Thickness: 1 3/4" Non-Thermal
 - II. Bottom Rail: 10"
 - III. Glazing: 1"
 - c. Finish: Manufacturer Standard Dark Bronze Anodized
 - d. Warranty: Manufacturer Standard but not less than 2 years
2. Glazing
 - a. Insulated Glass
 - I. 1" Overall Thickness (Entrance #1)
 1. 1/4" Clear Tempered Outboard Lite
 2. SB60 #2 Surface
 3. Mill Spacer
 4. 1/4" Clear Tempered Inboard Lite
 - II. 1/2" Overall Thickness (Vision Lites)
 1. 1/8" Clear Tempered Outboard Lite
 2. Mill Spacer
 - b. Insulated Architectural Panel (All Entrance Doors, Sidelights & Transoms U.N.O)
 - I. 1" embossed aluminum adhered to solid phenolic panel both sides
 - II. EPS core
 - III. Factory applied finish to match storefront framing
 - c. Warranty: Manufacturer Standard
3. Vision Lites
 - a. (2) each Entrances #2-7, 13 & 21
 - b. NGP L-GLF-100 SP or Equal
 - c. 8" x 34"
 - d. Warranty: Manufacturer Standard
4. Door Viewers
 - a. (1) each installed in active leaf of Entrances #8, 10,11,15,16,17&20
 - b. IVES 190 Degree or equal
5. Security Film
 - a. Applied to the interior surface of all glass lites
 - b. 3M Scotchshield & Security Film Ultra S800 w/3M Impact Protection Profile Attachment
6. Aluminum Door Hardware
 - a. Provide, prep & apply door hardware in accordance with attached Opening List/Hardware Sets
 - b. No Substitutions
 - c. Warranty : Manufacturer(s) Standard
7. Sealants
 - a. Interior & Exterior single and/or multi-component commercial grade sealants compatible with /suitable for the surrounding substrates and finishes
 - b. Backer materials as required
 - c. Color: Bronze to match aluminum finish
8. Submittals
 - a. Provide for owners review & approval (1) copy, (electronic where applicable) including but not limited to Manufacturer product & performance data, product cut sheets and samples.

Hardware for Door 10 on next page

Door 10 = Exterior Door, Frame and Hardware

Doors: 10

Hardware Set 3

1 Continuous Hinge	112HD 83" TEK	US28	IV
1 Exit Device	16 LC 8804 F LESS TRIM CPC	32D	SA
1 Cylinder Housing	26-094	626	SC
1 Rim Cylinder Housing	20-079	626	SC
2 Cylinder Core	23-030 1-Bitted E KEYWAY (Cut-KEY, Pin-IC-CORE, Pin-KEY-SYS, Stp-DND, Stp-VKC)	626	SC
1 Door Closer	SC71A RW/PA SC70-61	689	FL
1 Mounting Plate	SC70-18PA	689	FL
1 Overhead Door Stop	104S	US32D	GL
1 Door Bottom Sweep	3452 CNB 36"		PE
1 Threshold	273 X 224 AFGT 36" MSES25SS		PE
1 Piezo	PZ1	US32D	SN
1 Door Position Switch (GRI)	GI-19912W (DPDT 1" DIA.)		VA01

NOTE: GASKETING BY ALUMINUM SUPPLIER.

DOOR NORMALLY CLOSED AND SECURE.

EGRESS ALWAYS FREE FOR IMMEDIATE EXIT.

DOOR POSITION SWITCH PROVIDES OPEN/ CLOSED MONITORING TO BOTH ACCESS CONTROL SYSTEM AND INTRUSION ALARM SERVICE.

AUDIBLE ALARM SOUNDS WHEN DOOR IS AJAR FOR A PREDETERMINED AMOUNT OF TIME.

Door 11 = Exterior Doors, Frame and Hardware

Entrance style = V



Door Specifications :

1. Aluminum Storefront Entrance (1A.1+(A-2))
 - a. Framing: Tubelite 24650 Series 2"x 6 1/2" Flush Glaze or Equal
 - I. Base: 10"
 - II. Horizontal Mid-Rail: 6"
 - III. Glazing: 1"
 - b. Doors: Tubelite (WS) Wide Stile or Equal
 - I. Thickness: 1 3/4" Non-Thermal
 - II. Bottom Rail: 10"
 - III. Glazing: 1"
 - c. Finish: Manufacturer Standard Dark Bronze Anodized
 - d. Warranty: Manufacturer Standard but not less than 2 years
2. Glazing
 - a. Insulated Glass
 - I. 1" Overall Thickness (Entrance #1)
 1. 1/4" Clear Tempered Outboard Lite
 2. SB60 #2 Surface
 3. Mill Spacer
 4. 1/4" Clear Tempered Inboard Lite
 - II. 1/2" Overall Thickness (Vision Lites)
 1. 1/8" Clear Tempered Outboard Lite
 2. Mill Spacer
 - b. Insulated Architectural Panel (All Entrance Doors, Sidelights & Transoms U.N.O)
 - I. 1" embossed aluminum adhered to solid phenolic panel both sides
 - II. EPS core
 - III. Factory applied finish to match storefront framing
 - c. Warranty: Manufacturer Standard
3. Vision Lites
 - a. (2) each Entrances #2-7, 13 & 21
 - b. NGP L-GLF-100 SP or Equal
 - c. 8" x 34"
 - d. Warranty: Manufacturer Standard
4. Door Viewers
 - a. (1) each installed in active leaf of Entrances #8, 10, 11, 15, 16, 17 & 20
 - b. IVES 190 Degree or equal
5. Security Film
 - a. Applied to the interior surface of all glass lites
 - b. 3M Scotchshield & Security Film Ultra S800 w/3M Impact Protection Profile Attachment
6. Aluminum Door Hardware
 - a. Provide, prep & apply door hardware in accordance with attached Opening List/Hardware Sets
 - b. No Substitutions
 - c. Warranty : Manufacturer(s) Standard
7. Sealants
 - a. Interior & Exterior single and/or multi-component commercial grade sealants compatible with /suitable for the surrounding substrates and finishes
 - b. Backer materials as required
 - c. Color: Bronze to match aluminum finish
8. Submittals
 - a. Provide for owners review & approval (1) copy, (electronic where applicable) including but not limited to Manufacturer product & performance data, product cut sheets and samples.

Hardware for Door 11 on next page

Door 11 = Exterior Doors, Frame and Hardware

Doors: 11

Hardware Set 6

2	Continuous Hinge	112HD 83" TEK	US28	IV
1	Removable Mullion	L980S 96	PC	SA
1	Exit Device	16 LC 8804 F LESS TRJM CPC	32D	SA
1	Exit Device	16 LC 8810 F CPC	32D	SA
3	Cylinder Housing	26-094	626	SC
1	Rim Cylinder Housing	20-079	626	SC
4	Cylinder Core	23-030 1-Bitted E KEYWAY (Cut-KEY, Pin-IC-CORE, Pin-KEY-SYS, Stp-DND, Stp-VKC)	626	SC
2	Door Closer	SC71A RW/PA SC70-61	689	FL
2	Mounting Plate	SC70-18PA	689	FL
2	Overhead Door Stop	104S	US32D	GL
1	Door Pull	8190HD-18 TYPE O MTG.	US32D	IV
1	Piezo	PZ1	US32D	SN
2	Door Position Switch (GRI)	GI-19912W (DPDT 1" DIA.)		VA01
1	Mullion Gasketing	5110 BL 120"		PE
2	Door Bottom Sweep	3452 CNB 36"		PE
1	Threshold	273 X 224 AFGT 72" MSES25SS		PE
NOTE: GASKETING BY ALUMINUM SUPPLIER.				

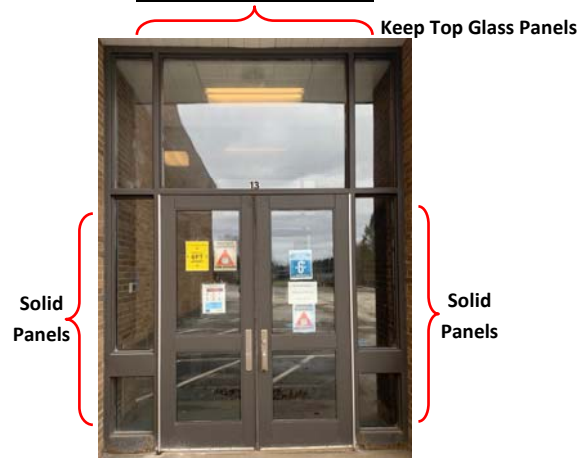
DOORS NORMALLY CLOSED AND SECURE.

DOOR POSITION SWITCHES PROVIDE OPEN/ CLOSED MONITORING TO BOTH ACCESS CONTROL SYSTEM AND INTRUSION ALARM SERVICE.

AUDIBLE ALARM SOUNDS WHEN DOORS ARE AJAR FOR A PREDETERMINED AMOUNT OF TIME.

Door 13A = Exterior Doors, Frame and Hardware

Entrance style = V



Door Specifications :

1. Aluminum Storefront Entrance (1A.1+(A-2)
 - a. Framing: Tubelite 24650 Series 2"x 6 1/2" Flush Glaze or Equal
 - I. Base: 10"
 - II. Horizontal Mid-Rail: 6"
 - III. Glazing: 1"
 - b. Doors: Tubelite (WS) Wide Stile or Equal
 - I. Thickness: 1 3/4" Non-Thermal
 - II. Bottom Rail: 10"
 - III. Glazing: 1"
 - c. Finish: Manufacturer Standard Dark Bronze Anodized
 - d. Warranty: Manufacturer Standard but not less than 2 years
2. Glazing
 - a. Insulated Glass
 - I. 1" Overall Thickness (Entrance #1)
 1. 1/4" Clear Tempered Outboard Lite
 2. SB60 #2 Surface
 3. Mill Spacer
 4. 1/4" Clear Tempered Inboard Lite
 - II. 1/2" Overall Thickness (Vision Lites)
 1. 1/8" Clear Tempered Outboard Lite
 2. Mill Spacer
 - b. Insulated Architectural Panel (All Entrance Doors, Sidelights & Transoms U.N.O)
 - I. 1" embossed aluminum adhered to solid phenolic panel both sides
 - II. EPS core
 - III. Factory applied finish to match storefront framing
 - c. Warranty: Manufacturer Standard
3. Vision Lites
 - a. (2) each Entrances #2-7, 13 & 21
 - b. NGP L-GLF-100 SP or Equal
 - c. 8" x 34"
 - d. Warranty: Manufacturer Standard
4. Door Viewers
 - a. (1) each installed in active leaf of Entrances #8, 10, 11, 15, 16, 17 & 20
 - b. IVES 190 Degree or equal
5. Security Film
 - a. Applied to the interior surface of all glass lites
 - b. 3M Scotchshield & Security Film Ultra S800 w/3M Impact Protection Profile Attachment
6. Aluminum Door Hardware
 - a. Provide, prep & apply door hardware in accordance with attached Opening List/Hardware Sets
 - b. No Substitutions
 - c. Warranty : Manufacturer(s) Standard
7. Sealants
 - a. Interior & Exterior single and/or multi-component commercial grade sealants compatible with /suitable for the surrounding substrates and finishes
 - b. Backer materials as required
 - c. Color: Bronze to match aluminum finish
8. Submittals
 - a. Provide for owners review & approval (1) copy, (electronic where applicable) including but not limited to Manufacturer product & performance data, product cut sheets and samples.

Hardware for Door 13A on next page

Door 13A = Exterior Doors, Frame and Hardware

Doors: 13A

Hardware Set 2

2	Continuous Hinge	112HD 83" EPT TEK	US28	IV
1	Removable Mullion	L980S 96	PC	SA
1	Exit Device	16 56 LC 8804 F LESS TRIM CPC	32D	SA
1	Exit Device	16 55 LC 8810 F CPC	32D	SA
1	Rim Cylinder Housing	20-079	626	SC
3	Cylinder Housing	26-094	626	SC
4	Cylinder Core	23-030 1-Bitted E KEYWAY (Cut-KEY, Pin-IC-CORE, Pin-KEY-SYS, Stp-DND, Stp-VKC)	626	SC
2	Door Closer	SC71A RW/PA SC70-61	689	FL
2	Mounting Plate	SC70-18PA	689	FL
2	Overhead Door Stop	104S	US32D	GL
1	Door Pull	8190HD-18 TYPE O MTG.	US32D	IV
1	Mullion Gasketing	5110 BL 120"		PE
2	Door Bottom Sweep	3452 CNB 36"		PE
1	Threshold	273 X 224 AFGT 72" MSES25SS		PE
1	Piezo	PZ1	US32D	SN
2	Power Transfer	EL-CEPT		SN
2	ElectroLynx Harness	QC-C300P		MC
2	ElectroLynx Harness	QC-C1500P		MC
2	Door Position Switch (GRI)	GI-19912W (DPDT 1" DIA.)		VA01
1	Power Supply	AQD4 PDB-1R PDB-4C2		SN
NOTE: GASKETING BY ALUMINUM SUPPLIER.				

DOOR NORMALLY CLOSED AND SECURE.

ACCESS BY VALID CREDENTIAL PRESENTATION RETRACTING LATCHES FOR A PRE DETERMINED TIME LIMIT AND THEN RELOCKING.

EGRESS ALWAYS FREE FOR IMMEDIATE EXIT.

REQUEST TO EXIT SENSORS ALLOW EXIT WITHOUT ALARM CONDITION.

DOOR POSITION SWITCHES PROVIDE OPEN/ CLOSED MONITORING TO BOTH ACCESS CONTROL SYSTEM AND INTRUSION ALARM SERVICE.

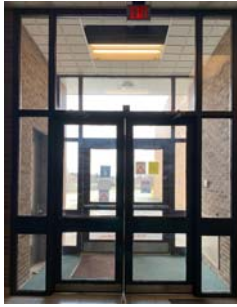
AUDIBLE ALARM SOUNDS WHEN DOORS ARE AJAR FOR A PREDETERMINED AMOUNT OF TIME.

LATCHES REMAIN PROJECTED/ LOCKED FAIL SECURE I N EVENT OF POWER LOSS.

KEY OVERRIDE CYLINDER FOR EMERGENCY ACCESS.

Door 13B = Interior Door - Doors, hinges and hardware only

Entrance style = V



Door Specifications :

1. Aluminum Storefront Entrance (1A.1+(A-2)
 - a. Framing: Tubelite 24650 Series 2"x 61/2" Flush Glaze or Equal
 - I. Base: 10"
 - II. Horizontal Mid-Rail: 6"
 - III. Glazing: 1"
 - b. Doors: Tubelite (WS) Wide Stile or Equal
 - I. Thickness: 1 3/4" Non-Thermal
 - II. Bottom Rail: 10"
 - III. Glazing: 1"
 - c. Finish: Manufacturer Standard Dark Bronze Anodized
 - d. Warranty: Manufacturer Standard but not less than 2 years
2. Glazing
 - a. Insulated Glass
 - I. 1" Overall Thickness (Entrance #1)
 1. 1/4" Clear Tempered Outboard Lite
 2. SB60 #2 Surface
 3. Mill Spacer
 4. 1/4" Clear Tempered Inboard Lite
 - II. 1/2" Overall Thickness (Vision Lites)
 1. 1/8" Clear Tempered Outboard Lite
 2. Mill Spacer
 - b. Insulated Architectural Panel (All Entrance Doors, Sidelights & Transoms U.N.O)
 - I. 1" embossed aluminum adhered to solid phenolic panel both sides
 - II. EPS core
 - III. Factory applied finish to match storefront framing
 - c. Warranty: Manufacturer Standard
3. Vision Lites
 - a. (2) each Entrances #2-7, 13 & 21
 - b. NGP L-GLF-100 SP or Equal
 - c. 8" x 34"
 - d. Warranty: Manufacturer Standard
4. Door Viewers
 - a. (1) each installed in active leaf of Entrances #8, 10,11,15,16,17&20
 - b. IVES 190 Degree or equal
5. Security Film
 - a. Applied to the interior surface of all glass lites
 - b. 3M Scotchshield & Security Film Ultra S800 w/3M Impact Protection Profile Attachment
6. Aluminum Door Hardware
 - a. Provide, prep & apply door hardware in accordance with attached Opening List/Hardware Sets
 - b. No Substitutions
 - c. Warranty : Manufacturer(s) Standard
7. Sealants
 - a. Interior & Exterior single and/or multi-component commercial grade sealants compatible with /suitable for the surrounding substrates and finishes
 - b. Backer materials as required
 - c. Color: Bronze to match aluminum finish
8. Submittals
 - a. Provide for owners review & approval (1) copy, (electronic where applicable) including but not limited to Manufacturer product & performance data, product cut sheets and samples.

Doors: 13B Hardware - Set #32

8 Hinges	5BB1 4 1/2 x 4 1/2	652	IV
1 Push/Pull Combo	9190HD-33-18 TYPE NO MTG.	US32D	IV
1 Push Bar	9100HD-33 TYPE O MTG.	US32D	IV
2 Mounting Plate	SC70-18PA	689	FL
2 Door Closer	SC71A RW/PA SC70-61	689	FL

Door 15 = Exterior Doors and Door Frame

Entrance style = S



Door Specifications :

1. Aluminum Storefront Entrance (1A.1+(A-2)
 - a. Framing: Tubelite 24650 Series 2"x 61/2" Flush Glaze or Equal
 - I. Base: 10"
 - II. Horizontal Mid-Rail: 6"
 - III. Glazing: 1"
 - b. Doors: Tubelite (WS) Wide Stile or Equal
 - I. Thickness: 1 3/4" Non-Thermal
 - II. Bottom Rail: 10"
 - III. Glazing: 1"
 - c. Finish: Manufacturer Standard Dark Bronze Anodized
 - d. Warranty: Manufacturer Standard but not less than 2 years
2. Glazing
 - a. Insulated Glass
 - I. 1" Overall Thickness (Entrance #1)
 1. 1/4" Clear Tempered Outboard Lite
 2. SB60 #2 Surface
 3. Mill Spacer
 4. 1/4" Clear Tempered Inboard Lite
 - II. 1/2" Overall Thickness (Vision Lites)
 1. 1/8" Clear Tempered Outboard Lite
 2. Mill Spacer
 - b. Insulated Architectural Panel (All Entrance Doors, Sidelights & Transoms U.N.O)
 - I. 1" embossed aluminum adhered to solid phenolic panel both sides
 - II. EPS core
 - III. Factory applied finish to match storefront framing
 - c. Warranty: Manufacturer Standard
3. Vision Lites
 - a. (2) each Entrances #2-7, 13 & 21
 - b. NGP L-GLF-100 SP or Equal
 - c. 8" x 34"
 - d. Warranty: Manufacturer Standard
4. Door Viewers
 - a. (1) each installed in active leaf of Entrances #8, 10,11,15,16,17&20
 - b. IVES 190 Degree or equal
5. Security Film
 - a. Applied to the interior surface of all glass lites
 - b. 3M Scotchshield & Security Film Ultra S800 w/3M Impact Protection Profile Attachment
6. Aluminum Door Hardware
 - a. Provide, prep & apply door hardware in accordance with attached Opening List/Hardware Sets
 - b. No Substitutions
 - c. Warranty : Manufacturer(s) Standard
7. Sealants
 - a. Interior & Exterior single and/or multi-component commercial grade sealants compatible with /suitable for the surrounding substrates and finishes
 - b. Backer materials as required
 - c. Color: Bronze to match aluminum finish
8. Submittals
 - a. Provide for owners review & approval (1) copy, (electronic where applicable) including but not limited to Manufacturer product & performance data, product cut sheets and samples.

Hardware for Door 15 on next page

Door 15 = Exterior Doors and Door Frame

Doors: 15

Hardware Set 2

2	Continuous Hinge	112HD 83" EPT TEK	US28	IV
1	Removable Mullion	L980S 96	PC	SA
1	Exit Device	16 56 LC 8804 F LESS TRIM CPC	32D	SA
1	Exit Device	16 55 LC 8810 F CPC	32D	SA
1	Rim Cylinder Housing	20-079	626	SC
3	Cylinder Housing	26-094	626	SC
4	Cylinder Core	23-030 1-Bitted E KEYWAY (Cut-KEY, Pin-IC-CORE, Pin-KEY-SYS, Stp-DND, Stp-VKC)	626	SC
2	Door Closer	SC71A RW/PA SC70-61	689	FL
2	Mounting Plate	SC70-18PA	689	FL
2	Overhead Door Stop	104S	US32D	GL
1	Door Pull	8190HD-18 TYPE O MTG.	US32D	IV
1	Mullion Gasketing	5110 BL 120"		PE
2	Door Bottom Sweep	3452 CNB 36"		PE
1	Threshold	273 X 224 AFGT 72" MSES25SS		PE
1	Piezo	PZ1	US32D	SN
2	Power Transfer	EL-CEPT		SN
2	ElectroLynx Harness	QC-C300P		MC
2	ElectroLynx Harness	QC-C1500P		MC
2	Door Position Switch (GRI)	GI-19912W (DPDT 1" DIA.)		VA01
1	Power Supply	AQD4 PDB-1R PDB-4C2		SN

NOTE: GASKETING BY ALUMINUM SUPPLIER.

DOOR NORMALLY CLOSED AND SECURE.

ACCESS BY VALID CREDENTIAL PRESENTATION RETRACTING LATCHES FOR A PRE DETERMINED TIME LIMIT AND THEN RELOCKING.

EGRESS ALWAYS FREE FOR IMMEDIATE EXIT.

REQUEST TO EXIT SENSORS ALLOW EXIT WITHOUT ALARM CONDITION.

DOOR POSITION SWITCHES PROVIDE OPEN/ CLOSED MONITORING TO BOTH ACCESS CONTROL SYSTEM AND INTRUSION ALARM SERVICE.

AUDIBLE ALARM SOUNDS WHEN DOORS ARE AJAR FOR A PREDETERMINED AMOUNT OF TIME.

LATCHES REMAIN PROJECTED/ LOCKED FAIL SECURE I N EVENT OF POWER LOSS.

KEY OVERRIDE CYLINDER FOR EMERGENCY ACCESS.

Door 16 = Exterior Doors and Door Frame

Entrance style = S

Solid
Panel



Door Specifications :

1. Aluminum Storefront Entrance (1A.1+(A-2)
 - a. Framing: Tubelite 24650 Series 2"x 61/2" Flush Glaze or Equal
 - I. Base: 10"
 - II. Horizontal Mid-Rail: 6"
 - III. Glazing: 1"
 - b. Doors: Tubelite (WS) Wide Stile or Equal
 - I. Thickness: 1 3/4" Non-Thermal
 - II. Bottom Rail: 10"
 - III. Glazing: 1"
 - c. Finish: Manufacturer Standard Dark Bronze Anodized
 - d. Warranty: Manufacturer Standard but not less than 2 years
2. Glazing
 - a. Insulated Glass
 - I. 1" Overall Thickness (Entrance #1)
 1. 1/4" Clear Tempered Outboard Lite
 2. SB60 #2 Surface
 3. Mill Spacer
 4. 1/4" Clear Tempered Inboard Lite
 - II. 1/2" Overall Thickness (Vision Lites)
 1. 1/8" Clear Tempered Outboard Lite
 2. Mill Spacer
 - b. Insulated Architectural Panel (All Entrance Doors, Sidelights & Transoms U.N.O)
 - I. 1" embossed aluminum adhered to solid phenolic panel both sides
 - II. EPS core
 - III. Factory applied finish to match storefront framing
 - c. Warranty: Manufacturer Standard
3. Vision Lites
 - a. (2) each Entrances #2-7, 13 & 21
 - b. NGP L-GLF-100 SP or Equal
 - c. 8" x 34"
 - d. Warranty: Manufacturer Standard
4. Door Viewers
 - a. (1) each installed in active leaf of Entrances #8, 10,11,15,16,17&20
 - b. IVES 190 Degree or equal
5. Security Film
 - a. Applied to the interior surface of all glass lites
 - b. 3M Scotchshield & Security Film Ultra S800 w/3M Impact Protection Profile Attachment
6. Aluminum Door Hardware
 - a. Provide, prep & apply door hardware in accordance with attached Opening List/Hardware Sets
 - b. No Substitutions
 - c. Warranty : Manufacturer(s) Standard
7. Sealants
 - a. Interior & Exterior single and/or multi-component commercial grade sealants compatible with /suitable for the surrounding substrates and finishes
 - b. Backer materials as required
 - c. Color: Bronze to match aluminum finish
8. Submittals
 - a. Provide for owners review & approval (1) copy, (electronic where applicable) including but not limited to Manufacturer product & performance data, product cut sheets and samples.

Hardware for Door 16 on next page

Door 16 = Exterior Doors and Door Frame

Doors: 16

Hardware Set 6

2	Continuous Hinge	112HD 83" TEK	US28	IV
1	Removable Mullion	L980S 96	PC	SA
1	Exit Device	16 LC 8804 F LESS TRIM CPC	32D	SA
1	Exit Device	16 LC 8810 F CPC	32D	SA
3	Cylinder Housing	26-094	626	SC
1	Rim Cylinder Housing	20-079	626	SC
4	Cylinder Core	23-030 1-Bitted E KEYWAY (Cut-KEY, Pin-IC-CORE, Pin-KEY-SYS, Stp-DND, Stp-VKC)	626	SC
2	Door Closer	SC71A RW/PA SC70-61	689	FL
2	Mounting Plate	SC70-18PA	689	FL
2	Overhead Door Stop	104S	US32D	GL
1	Door Pull	8190HD-18 TYPE O MTG.	US32D	IV
1	Piezo	PZ1	US32D	SN
2	Door Position Switch (GRI)	GI-19912W (DPDT 1" DIA.)		VA01
1	Mullion Gasketing	5110 BL 120"		PE
2	Door Bottom Sweep	3452 CNB 36"		PE
1	Threshold	273 X 224 AFGT 72" MSES25SS		PE

NOTE: GASKETING BY ALUMINUM SUPPLIER.

DOORS NORMALLY CLOSED AND SECURE.

DOOR POSITION SWITCHES PROVIDE OPEN/ CLOSED MONITORING TO BOTH ACCESS CONTROL SYSTEM AND INTRUSION ALARM SERVICE.

AUDIBLE ALARM SOUNDS WHEN DOORS ARE AJAR FOR A PREDETERMINED AMOUNT OF TIME.

Door 17 = Exterior Doors, Hardware and Door Frame

Entrance style = S

Solid
Panel



Door Specifications :

1. Aluminum Storefront Entrance (1A.1+(A-2)
 - a. Framing: Tubelite 24650 Series 2"x 6 1/2" Flush Glaze or Equal
 - I. Base: 10"
 - II. Horizontal Mid-Rail: 6"
 - III. Glazing: 1"
 - b. Doors: Tubelite (WS) Wide Stile or Equal
 - I. Thickness: 1 3/4" Non-Thermal
 - II. Bottom Rail: 10"
 - III. Glazing: 1"
 - c. Finish: Manufacturer Standard Dark Bronze Anodized
 - d. Warranty: Manufacturer Standard but not less than 2 years
2. Glazing
 - a. Insulated Glass
 - I. 1" Overall Thickness (Entrance #1)
 1. 1/4" Clear Tempered Outboard Lite
 2. SB60 #2 Surface
 3. Mill Spacer
 4. 1/4" Clear Tempered Inboard Lite
 - II. 1/2" Overall Thickness (Vision Lites)
 1. 1/8" Clear Tempered Outboard Lite
 2. Mill Spacer
 - b. Insulated Architectural Panel (All Entrance Doors, Sidelights & Transoms U.N.O)
 - I. 1" embossed aluminum adhered to solid phenolic panel both sides
 - II. EPS core
 - III. Factory applied finish to match storefront framing
 - c. Warranty: Manufacturer Standard
3. Vision Lites
 - a. (2) each Entrances #2-7, 13 & 21
 - b. NGP L-GLF-100 SP or Equal
 - c. 8" x 34"
 - d. Warranty: Manufacturer Standard
4. Door Viewers
 - a. (1) each installed in active leaf of Entrances #8, 10,11,15,16,17&20
 - b. IVES 190 Degree or equal
5. Security Film
 - a. Applied to the interior surface of all glass lites
 - b. 3M Scotchshield & Security Film Ultra S800 w/3M Impact Protection Profile Attachment
6. Aluminum Door Hardware
 - a. Provide, prep & apply door hardware in accordance with attached Opening List/Hardware Sets
 - b. No Substitutions
 - c. Warranty : Manufacturer(s) Standard
7. Sealants
 - a. Interior & Exterior single and/or multi-component commercial grade sealants compatible with /suitable for the surrounding substrates and finishes
 - b. Backer materials as required
 - c. Color: Bronze to match aluminum finish
8. Submittals
 - a. Provide for owners review & approval (1) copy, (electronic where applicable) including but not limited to Manufacturer product & performance data, product cut sheets and samples.

Hardware for Door 17 on next page

Door 17 = Exterior Doors, Hardware and Door Frame

Doors: 17

Hardware Set 2

2 Continuous Hinge	112HD 83" EPT TEK	US28	IV
1 Removable Mullion	L980S 96	PC	SA
1 Exit Device	16 56 LC 8804 F LESS TRIM CPC	32D	SA
1 Exit Device	16 55 LC 8810 F CPC	32D	SA
1 Rim Cylinder Housing	20-079	626	SC
3 Cylinder Housing	26-094	626	SC
4 Cylinder Core	23-030 1-Bitted E KEYWAY (Cut-KEY, Pin-IC-CORE, Pin-KEY-SYS, Stp-DND, Stp-VKC)	626	SC
2 Door Closer	SC71A RW/PA SC70-61	689	FL
2 Mounting Plate	SC70-18PA	689	FL
2 Overhead Door Stop	104S	US32D	GL
1 Door Pull	8190HD-18 TYPE O MTG.	US32D	IV
1 Mullion Gasketing	5110 BL 120"		PE
2 Door Bottom Sweep	3452 CNB 36"		PE
1 Threshold	273 X 224 AFGT 72" MSES25SS		PE
1 Piezo	PZ1	US32D	SN
2 Power Transfer	EL-CEPT		SN
2 ElectroLynx Harness	QC-C300P		MC
2 ElectroLynx Harness	QC-C1500P		MC
2 Door Position Switch (GRI)	GI-19912W (DPDT 1" DIA.)		VA01
1 Power Supply	AQD4 PDB-1R PDB-4C2		SN

NOTE: GASKETING BY ALUMINUM SUPPLIER.

DOOR NORMALLY CLOSED AND SECURE.

ACCESS BY VALID CREDENTIAL PRESENTATION RETRACTING LATCHES FOR A PRE DETERMINED TIME LIMIT AND THEN RELOCKING.

EGRESS ALWAYS FREE FOR IMMEDIATE EXIT.

REQUEST TO EXIT SENSORS ALLOW EXIT WITHOUT ALARM CONDITION.

DOOR POSITION SWITCHES PROVIDE OPEN/ CLOSED MONITORING TO BOTH ACCESS CONTROL SYSTEM AND INTRUSION ALARM SERVICE.

AUDIBLE ALARM SOUNDS WHEN DOORS ARE AJAR FOR A PREDETERMINED AMOUNT OF TIME.

LATCHES REMAIN PROJECTED/ LOCKED FAIL SECURE I N EVENT OF POWER LOSS.

KEY OVERRIDE CYLINDER FOR EMERGENCY ACCESS.

Door 20 = Exterior Doors, Hardware and Door Frame

Entrance style = V



Door Specifications :

1. Aluminum Storefront Entrance (1A.1+(A-2)
 - a. Framing: Tubelite 24650 Series 2"x 61/2" Flush Glaze or Equal
 - I. Base: 10"
 - II. Horizontal Mid-Rail: 6"
 - III. Glazing: 1"
 - b. Doors: Tubelite (WS) Wide Stile or Equal
 - I. Thickness: 1 3/4" Non-Thermal
 - II. Bottom Rail: 10"
 - III. Glazing: 1"
 - c. Finish: Manufacturer Standard Dark Bronze Anodized
 - d. Warranty: Manufacturer Standard but not less than 2 years
2. Glazing
 - a. Insulated Glass
 - I. 1" Overall Thickness (Entrance #1)
 1. 1/4" Clear Tempered Outboard Lite
 2. SB60 #2 Surface
 3. Mill Spacer
 4. 1/4" Clear Tempered Inboard Lite
 - II. 1/2" Overall Thickness (Vision Lites)
 1. 1/8" Clear Tempered Outboard Lite
 2. Mill Spacer
 - b. Insulated Architectural Panel (All Entrance Doors, Sidelights & Transoms U.N.O)
 - I. 1" embossed aluminum adhered to solid phenolic panel both sides
 - II. EPS core
 - III. Factory applied finish to match storefront framing
 - c. Warranty: Manufacturer Standard
3. Vision Lites
 - a. (2) each Entrances #2-7, 13 & 21
 - b. NGP L-GLF-100 SP or Equal
 - c. 8" x 34"
 - d. Warranty: Manufacturer Standard
4. Door Viewers
 - a. (1) each installed in active leaf of Entrances #8, 10,11,15,16,17&20
 - b. IVES 190 Degree or equal
5. Security Film
 - a. Applied to the interior surface of all glass lites
 - b. 3M Scotchshield & Security Film Ultra S800 w/3M Impact Protection Profile Attachment
6. Aluminum Door Hardware
 - a. Provide, prep & apply door hardware in accordance with attached Opening List/Hardware Sets
 - b. No Substitutions
 - c. Warranty : Manufacturer(s) Standard
7. Sealants
 - a. Interior & Exterior single and/or multi-component commercial grade sealants compatible with /suitable for the surrounding substrates and finishes
 - b. Backer materials as required
 - c. Color: Bronze to match aluminum finish
8. Submittals
 - a. Provide for owners review & approval (1) copy, (electronic where applicable) including but not limited to Manufacturer product & performance data, product cut sheets and samples.

Hardware for Door 20 on next page

Door 20 = Exterior Doors, Hardware and Door Frame

Doors: 20

Hardware Set 2

2	Continuous Hinge	112HD 83" EPT TEK	US28	IV
1	Removable Mullion	L980S 96	PC	SA
1	Exit Device	16 56 LC 8804 F LESS TRIM CPC	32D	SA
1	Exit Device	16 55 LC 8810 F CPC	32D	SA
1	Rim Cylinder Housing	20-079	626	SC
3	Cylinder Housing	26-094	626	SC
4	Cylinder Core	23-030 1-Bitted E KEYWAY (Cut-KEY, Pin-IC-CORE, Pin-KEY-SYS, Stp-DND, Stp-VKC)	626	SC
2	Door Closer	SC71A RW/PA SC70-61	689	FL
2	Mounting Plate	SC70-18PA	689	FL
2	Overhead Door Stop	104S	US32D	GL
1	Door Pull	8190HD-18 TYPE O MTG.	US32D	IV
1	Mullion Gasketing	5110 BL 120"		PE
2	Door Bottom Sweep	3452 CNB 36"		PE
1	Threshold	273 X 224 AFGT 72" MSES25SS		PE
1	Piezo	PZ1	US32D	SN
2	Power Transfer	EL-CEPT		SN
2	ElectroLynx Harness	QC-C300P		MC
2	ElectroLynx Harness	QC-C1500P		MC
2	Door Position Switch (GRI)	GI-19912W (DPDT 1" DIA.)		VA01
1	Power Supply	AQD4 PDB-1R PDB-4C2		SN

NOTE: GASKETING BY ALUMINUM SUPPLIER.

DOOR NORMALLY CLOSED AND SECURE.

ACCESS BY VALID CREDENTIAL PRESENTATION RETRACTING LATCHES FOR A PRE DETERMINED TIME LIMIT AND THEN RELOCKING.

EGRESS ALWAYS FREE FOR IMMEDIATE EXIT.

REQUEST TO EXIT SENSORS ALLOW EXIT WITHOUT ALARM CONDITION.

DOOR POSITION SWITCHES PROVIDE OPEN/ CLOSED MONITORING TO BOTH ACCESS CONTROL SYSTEM AND INTRUSION ALARM SERVICE.

AUDIBLE ALARM SOUNDS WHEN DOORS ARE AJAR FOR A PREDETERMINED AMOUNT OF TIME.

LATCHES REMAIN PROJECTED/ LOCKED FAIL SECURE I N EVENT OF POWER LOSS.

KEY OVERRIDE CYLINDER FOR EMERGENCY ACCESS.

Door 21 = Exterior Doors & Frame only

Entrance style = V



Door Specifications :

1. Aluminum Storefront Entrance (1A.1+(A-2)
 - a. Framing: Tubelite 24650 Series 2"x 61/2" Flush Glaze or Equal
 - I. Base: 10"
 - II. Horizontal Mid-Rail: 6"
 - III. Glazing: 1"
 - b. Doors: Tubelite (WS) Wide Stile or Equal
 - I. Thickness: 1 3/4" Non-Thermal
 - II. Bottom Rail: 10"
 - III. Glazing: 1"
 - c. Finish: Manufacturer Standard Dark Bronze Anodized
 - d. Warranty: Manufacturer Standard but not less than 2 years
2. Glazing
 - a. Insulated Glass
 - I. 1" Overall Thickness (Entrance #1)
 1. 1/4" Clear Tempered Outboard Lite
 2. SB60 #2 Surface
 3. Mill Spacer
 4. 1/4" Clear Tempered Inboard Lite
 - II. 1/2" Overall Thickness (Vision Lites)
 1. 1/8" Clear Tempered Outboard Lite
 2. Mill Spacer
 - b. Insulated Architectural Panel (All Entrance Doors, Sidelights & Transoms U.N.O)
 - I. 1" embossed aluminum adhered to solid phenolic panel both sides
 - II. EPS core
 - III. Factory applied finish to match storefront framing
 - c. Warranty: Manufacturer Standard
3. Vision Lites
 - a. (2) each Entrances #2-7, 13 & 21
 - b. NGP L-GLF-100 SP or Equal
 - c. 8" x 34"
 - d. Warranty: Manufacturer Standard
4. Door Viewers
 - a. (1) each installed in active leaf of Entrances #8, 10,11,15,16,17&20
 - b. IVES 190 Degree or equal
5. Security Film
 - a. Applied to the interior surface of all glass lites
 - b. 3M Scotchshield & Security Film Ultra S800 w/3M Impact Protection Profile Attachment
6. Aluminum Door Hardware
 - a. Provide, prep & apply door hardware in accordance with attached Opening List/Hardware Sets
 - b. No Substitutions
 - c. Warranty : Manufacturer(s) Standard
7. Sealants
 - a. Interior & Exterior single and/or multi-component commercial grade sealants compatible with /suitable for the surrounding substrates and finishes
 - b. Backer materials as required
 - c. Color: Bronze to match aluminum finish
8. Submittals
 - a. Provide for owners review & approval (1) copy, (electronic where applicable) including but not limited to Manufacturer product & performance data, product cut sheets and samples.

Hardware for Door 21 on next page

Door 21 = Exterior Doors & Frame only

Doors: 21

Hardware Set 6

2	Continuous Hinge	112HD 83" TEK	US28	IV
1	Removable Mullion	L980S 96	PC	SA
1	Exit Device	16 LC 8804 F LESS TRIM CPC	32D	SA
1	Exit Device	16 LC 8810 F CPC	32D	SA
3	Cylinder Housing	26-094	626	SC
1	Rim Cylinder Housing	20-079	626	SC
4	Cylinder Core	23-030 1-Bitted E KEYWAY (Cut-KEY, Pin-IC-CORE, Pin-KEY-SYS, Stp-DND, Stp-VKC)	626	SC
2	Door Closer	SC71A RW/PA SC70-61	689	FL
2	Mounting Plate	SC70-18PA	689	FL
2	Overhead Door Stop	104S	US32D	GL
1	Door Pull	8190HD-18 TYPE O MTG.	US32D	IV
1	Piezo	PZ1	US32D	SN
2	Door Position Switch (GRI)	GI-19912W (DPDT 1" DIA.)		VA01
1	Mullion Gasketing	5110 BL 120"		PE
2	Door Bottom Sweep	3452 CNB 36"		PE
1	Threshold	273 X 224 AFGT 72" MSES25SS		PE
NOTE: GASKETING BY ALUMINUM SUPPLIER.				

DOORS NORMALLY CLOSED AND SECURE.

DOOR POSITION SWITCHES PROVIDE OPEN/ CLOSED MONITORING TO BOTH ACCESS CONTROL SYSTEM AND INTRUSION ALARM SERVICE.

AUDIBLE ALARM SOUNDS WHEN DOORS ARE AJAR FOR A PREDETERMINED AMOUNT OF TIME.

Door Style Examples



Entrance style = S - Solid



Entrance style = S - Solid
(with solid side-light)

Door Style Examples



Entrance style = SF - Store Front



Entrance style = V - Vision Light

VI. SIGNATURE FORM/BID PRICE REPLY FORM

Tara Lineman:

UNION CITY AREA SCHOOL DISTRICT
107 CONCORD STREET
UNION CITY, PA. 16438

Dear Mrs. Lineman:

In compliance with your Request for Bid, we hereby agree to furnish to the Union City Area School District any or all of the items contained within this bid for which we have supplied quotations.

This bid is subject to all terms, conditions, and specifications listed in Request for Bid.

Respectfully submitted:

Firm Name

By (authorized name - printed)

Date

By (authorized name - signed)

Title

Address

City/State/Zip

Telephone

☐ Addendums #1, #2 & #3 Received - initial here_____

Total Base Bid: \$_____

Alternate Bid: \$_____ (4.5 inch framing system)

End of Addendum #3